

Multnomah County Sheriff's Office

Monthly Jail Report, December 2025



Multnomah County Sheriff's Office - Nicole Morrissey O'Donnell, Sheriff
501 SE Hawthorne Blvd., Suite 350 Portland OR 97214
503-988-4300 (TTY 503-988-4500) www.mcso.us/site/

December 2025 Summary and Reference Page

Standard bookings p. 3

1644

Forced Releases (Emergency Population Releases) p. 9

0

Average Length of Stay p. 11

19.61 days

Capacity p. 14

1,130 beds

Average Daily Population p. 14

907 (80% of capacity)

This report is a monthly publication of MCSO's Planning and Research Unit. We appreciate any suggestions or feedback you may have. Please feel free to contact us at mcsopandr@mcsso.us.

Kevin Maurelli

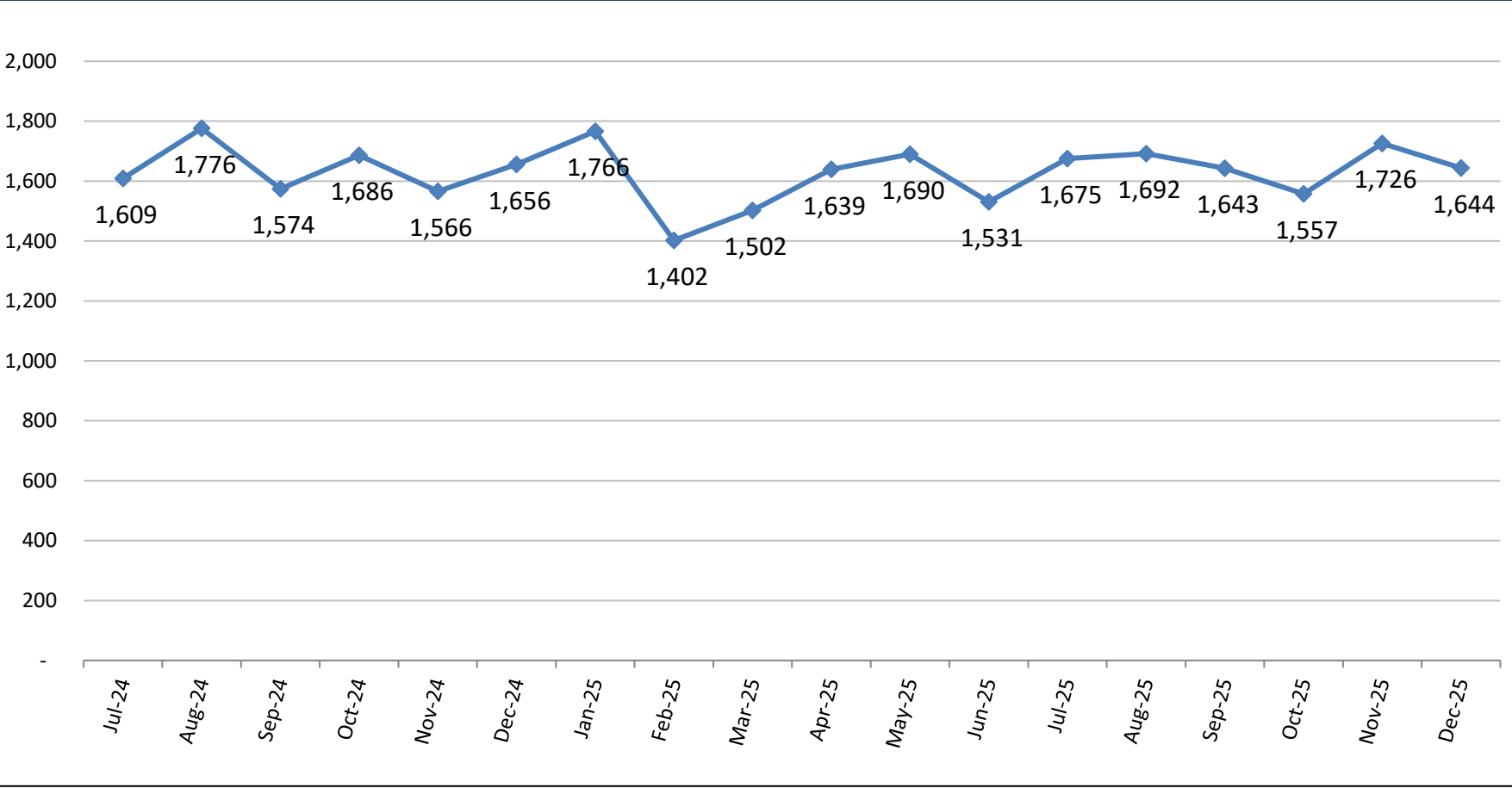
Morgan Stahl

Alain Busto

Spencer Oswald

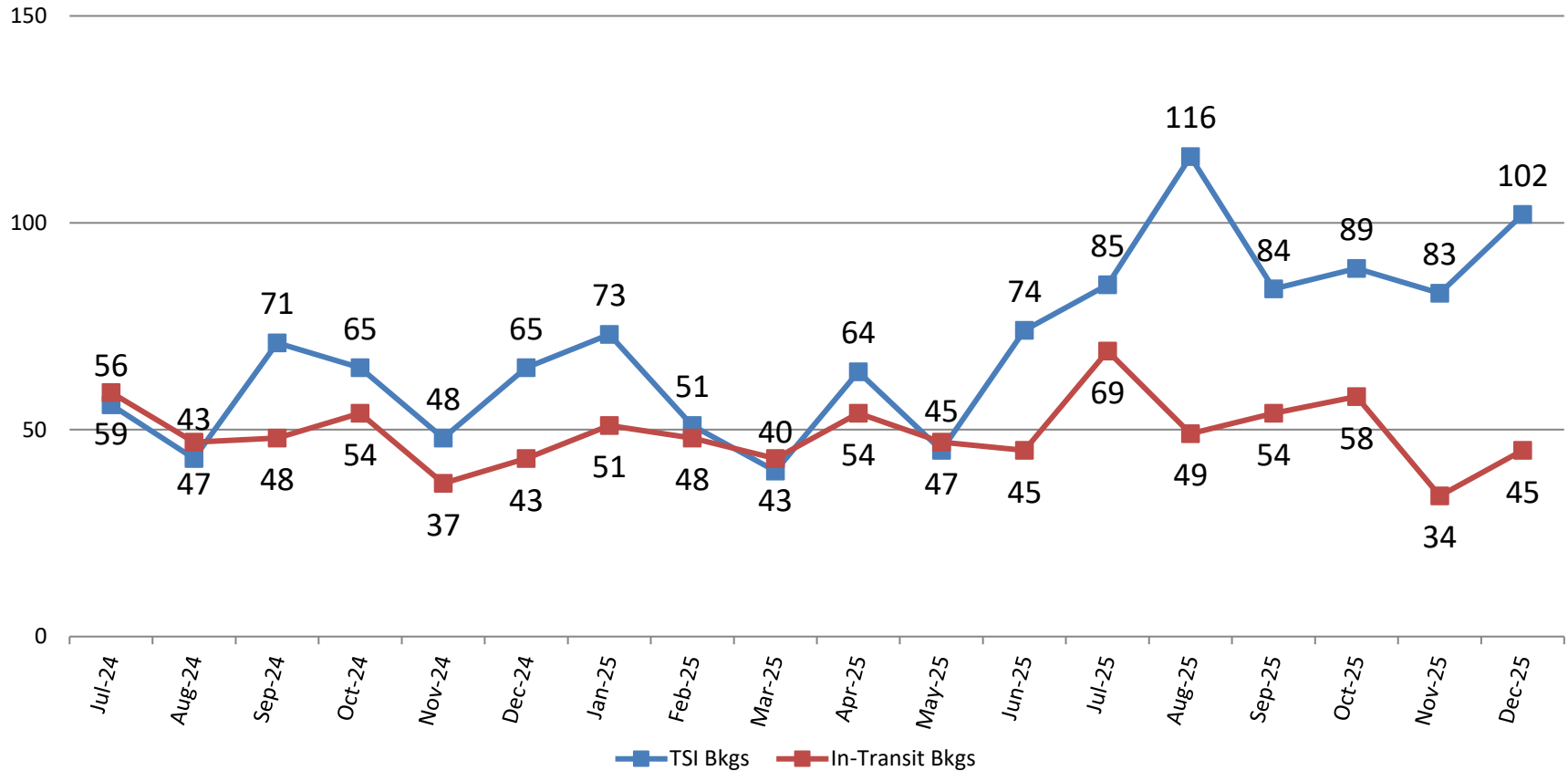
Meghana Ganga

Standard Bookings



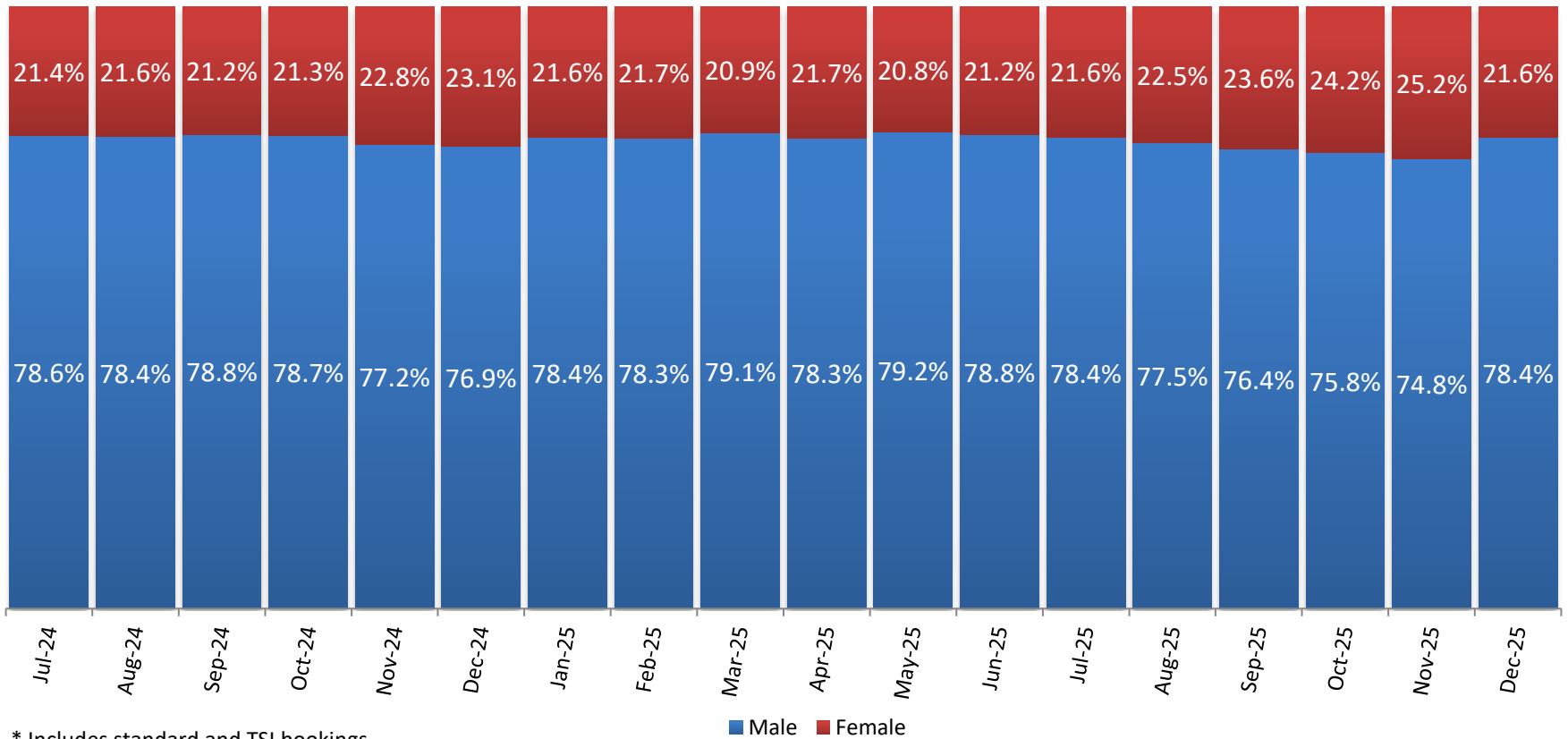
Standard bookings totaled 1,644 in December, averaging 53 bookings per day.

Turn-Self In and In-Transit Bookings



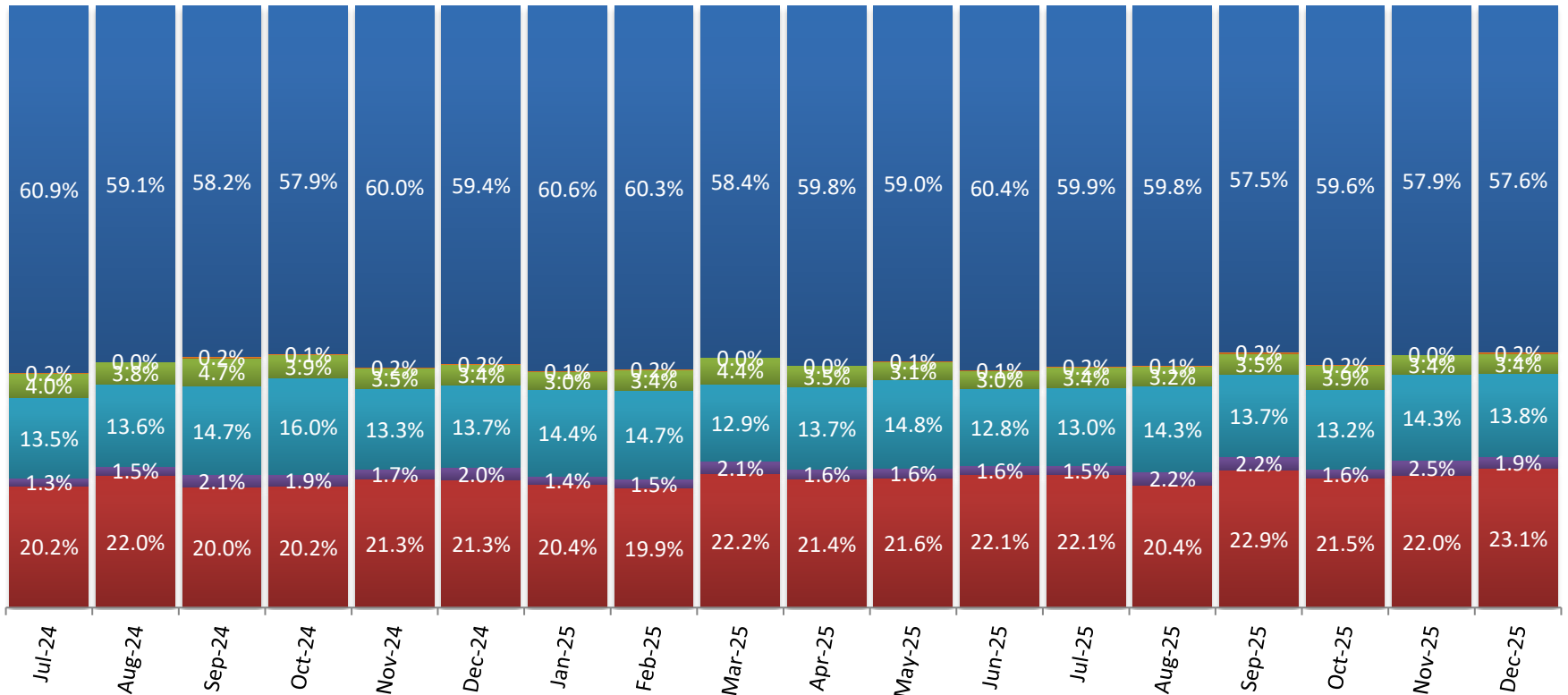
In-Transit bookings are individuals being held for other jurisdictions while being transported. While those In-Transit may stay overnight, they do not impact the daily jail system count. Turn-Self In (TSI) bookings are situations in which a person has been sentenced and ordered to return to jail at a later date.

Gender Composition of Bookings



The percent of females and males booked is typically between 17 - 23% and 76 - 83%, respectively.

Ethnic Composition of Bookings



* Includes standard and TSI bookings.

■ Black ■ Native Amer ■ Hispanic ■ Asian ■ Other ■ White

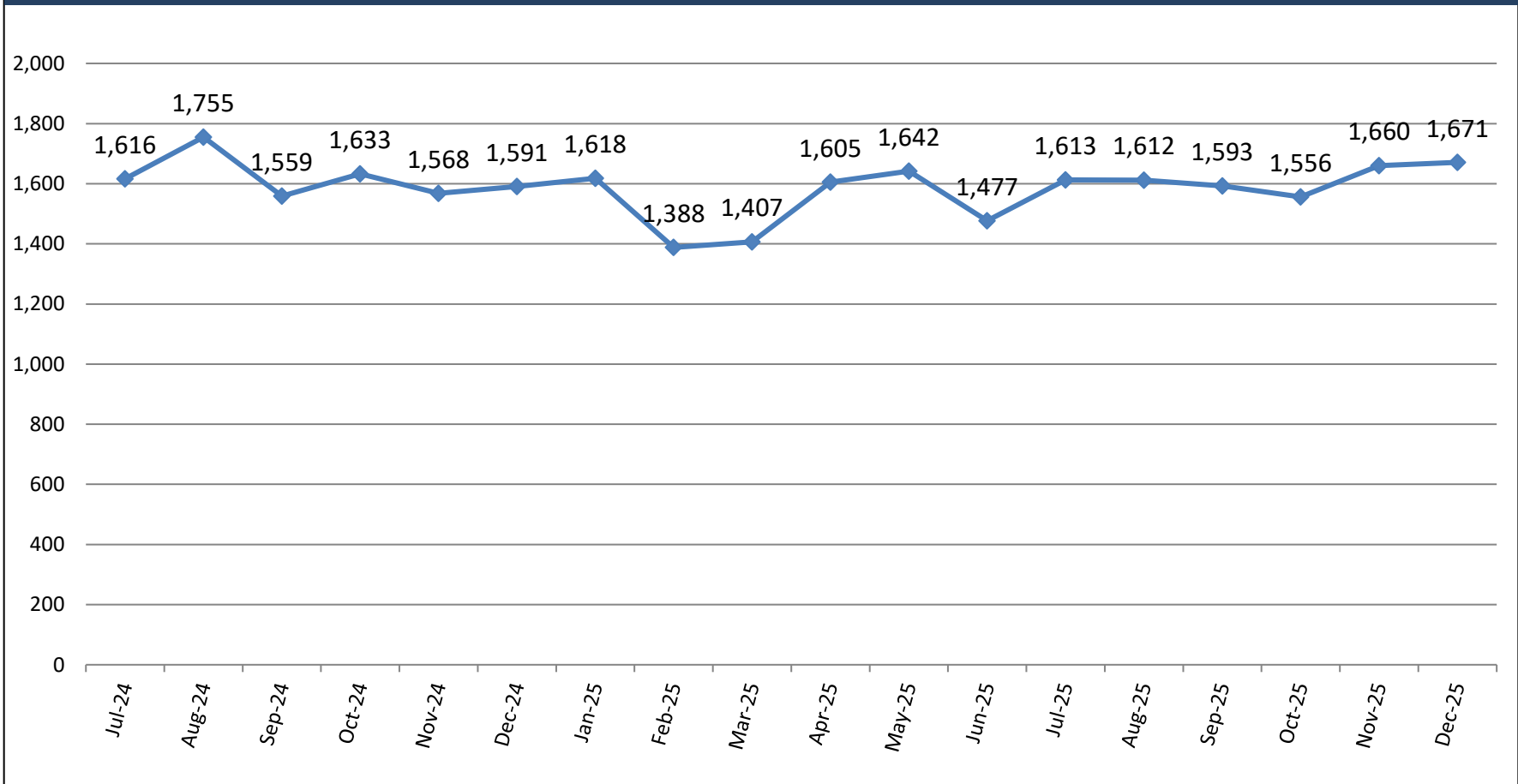
The Multnomah County Sheriff's Office recognizes the right for people to self-identify their race/ethnicity and the limitations the current booking data system has in this regard.

Demographics for Multnomah County can be found at:

[https://data.census.gov/profile/Multnomah County, Oregon?g=050XX00US41051](https://data.census.gov/profile/Multnomah%20County,%20Oregon?g=050XX00US41051)

Total Releases

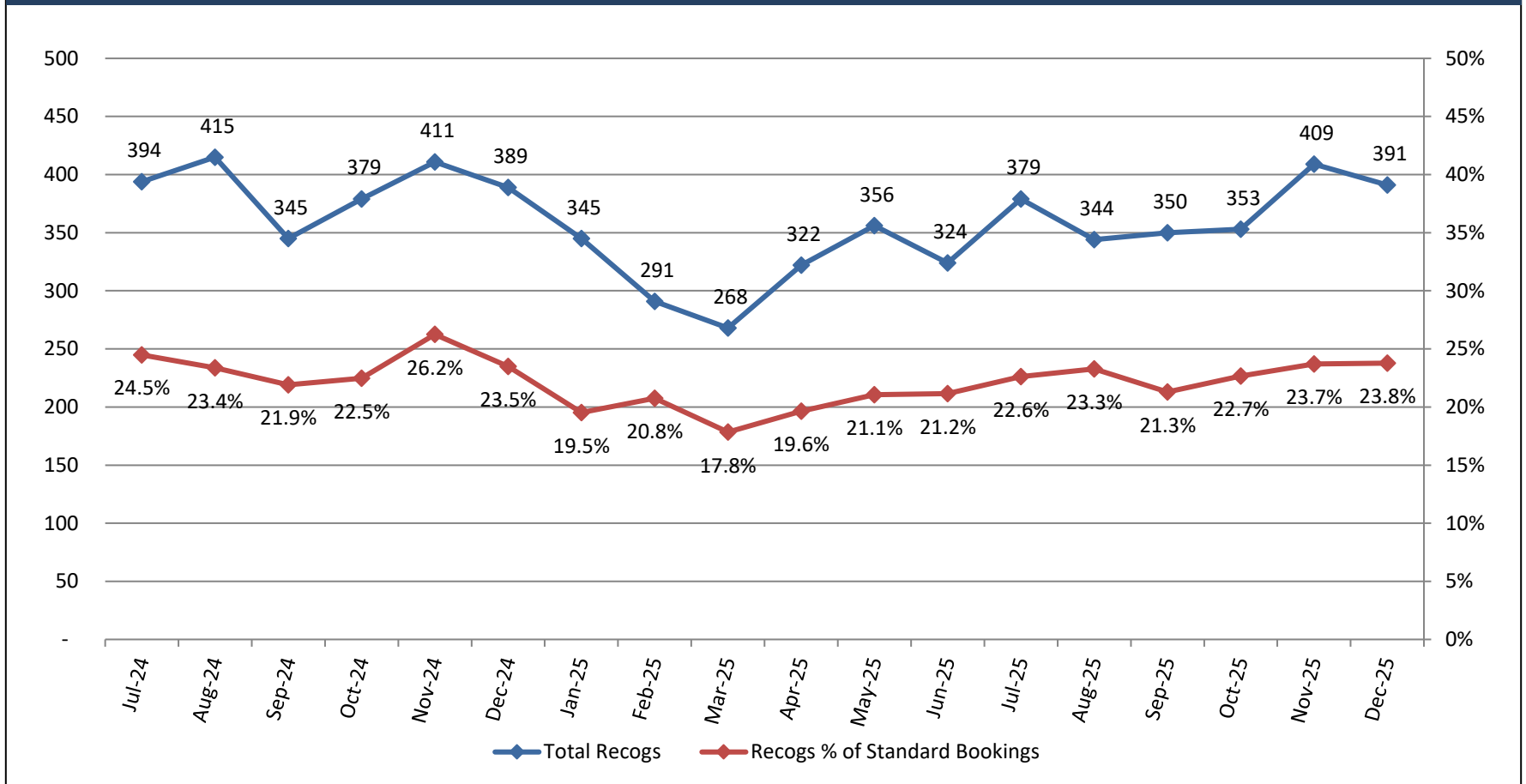
(standard bookings only)



Releases among standard bookings averaged 54 per day in December.

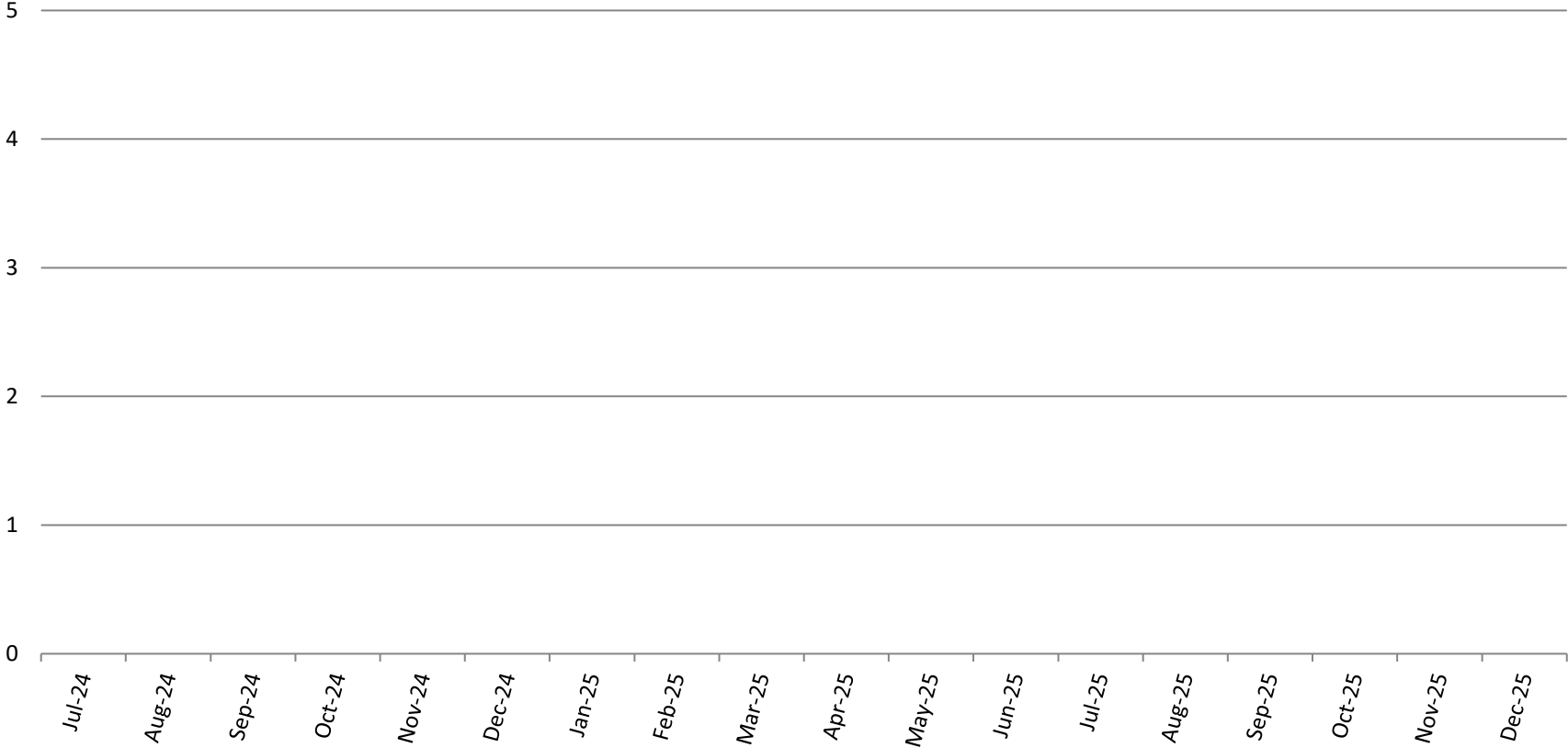
Recognizance Releases

(subset of total releases)



Recognizance releases averaged 13 per day in December. Just under 24% of all standard bookings were released on their own recognizance in December.

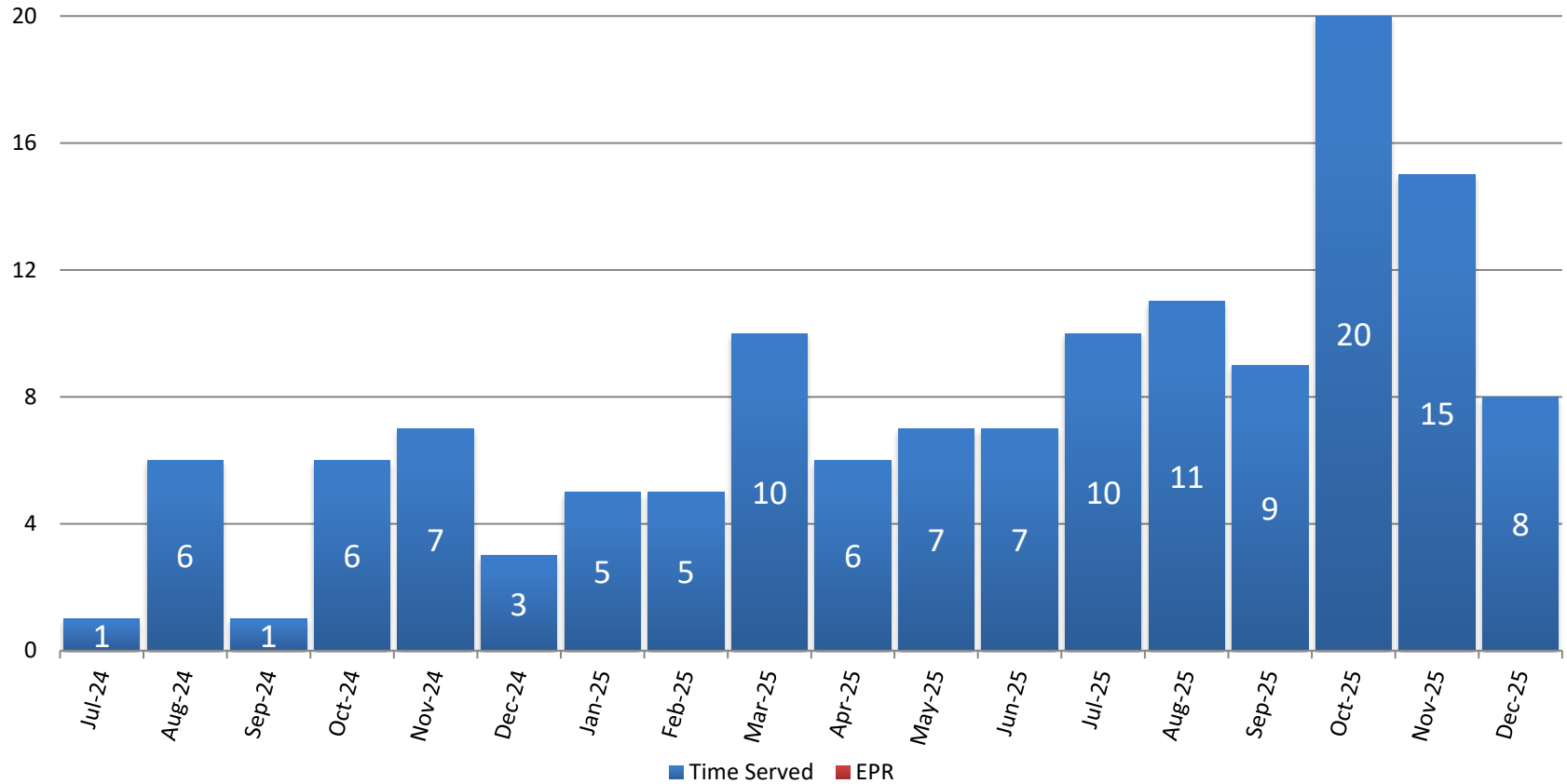
Forced Releases (EPRs)



* Forced releases may occur per Multnomah County Board Resolution 04-135 as part of the jail capacity management plan.

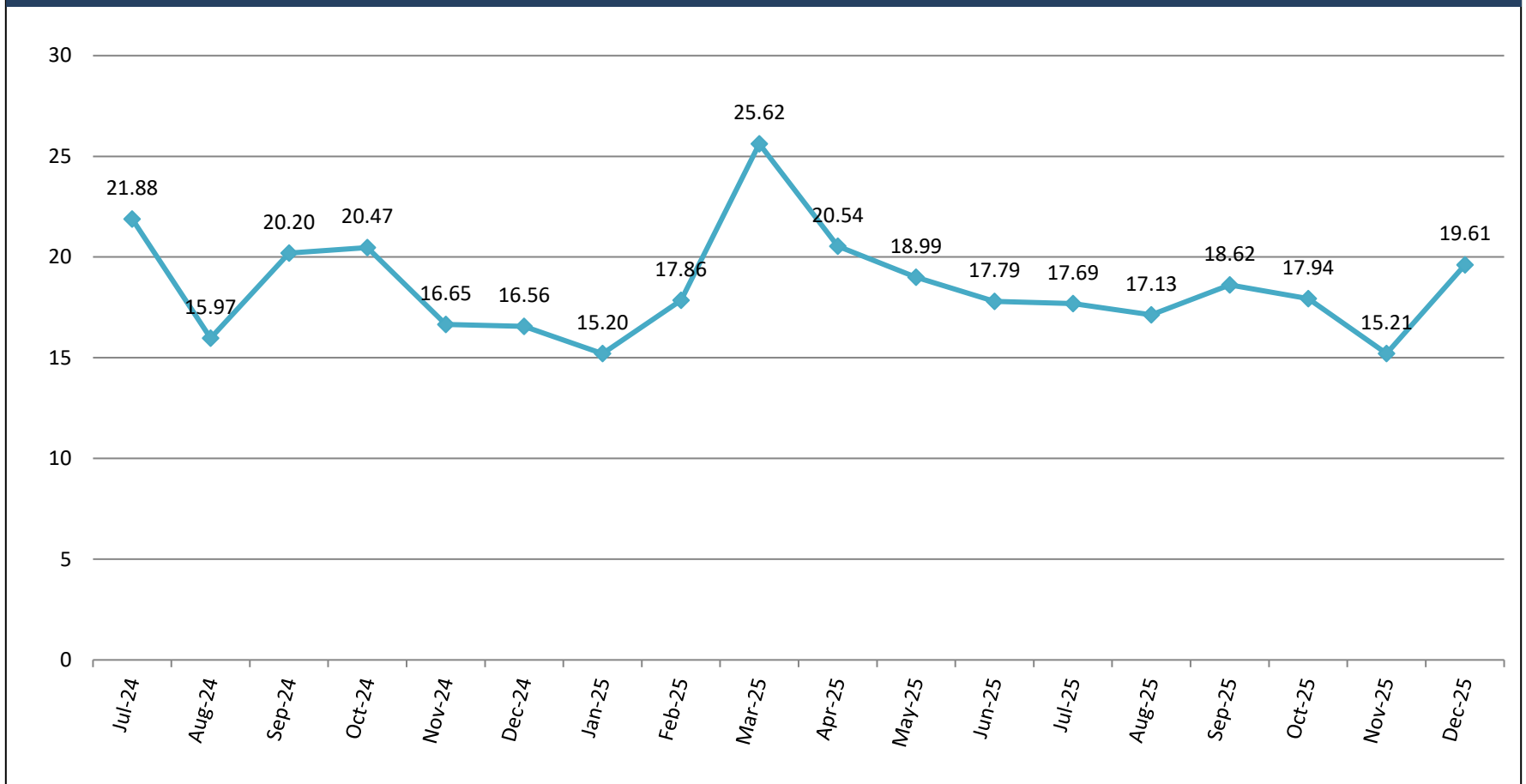
There were no forced releases in December or in the previous 18 months.

Releases between 12 AM and 8 AM



In December, there was 4 court ordered releases and 4 releases between Midnight and 8 AM of an individual who had served their sentence.

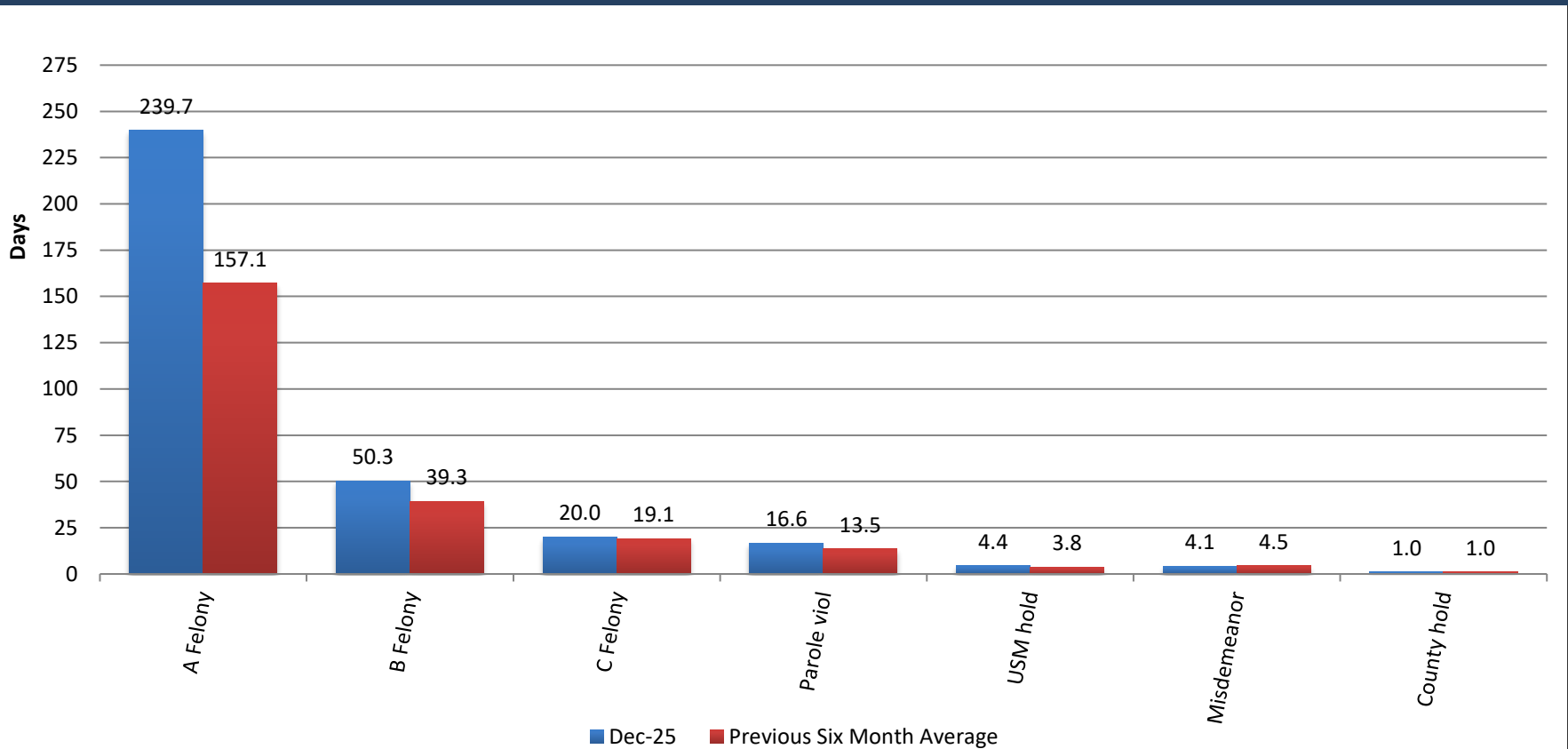
Average Length of Stay (in days)



The average length of stay was 19.61 days for people released in December.

Average Length of Stay by Charge Priority

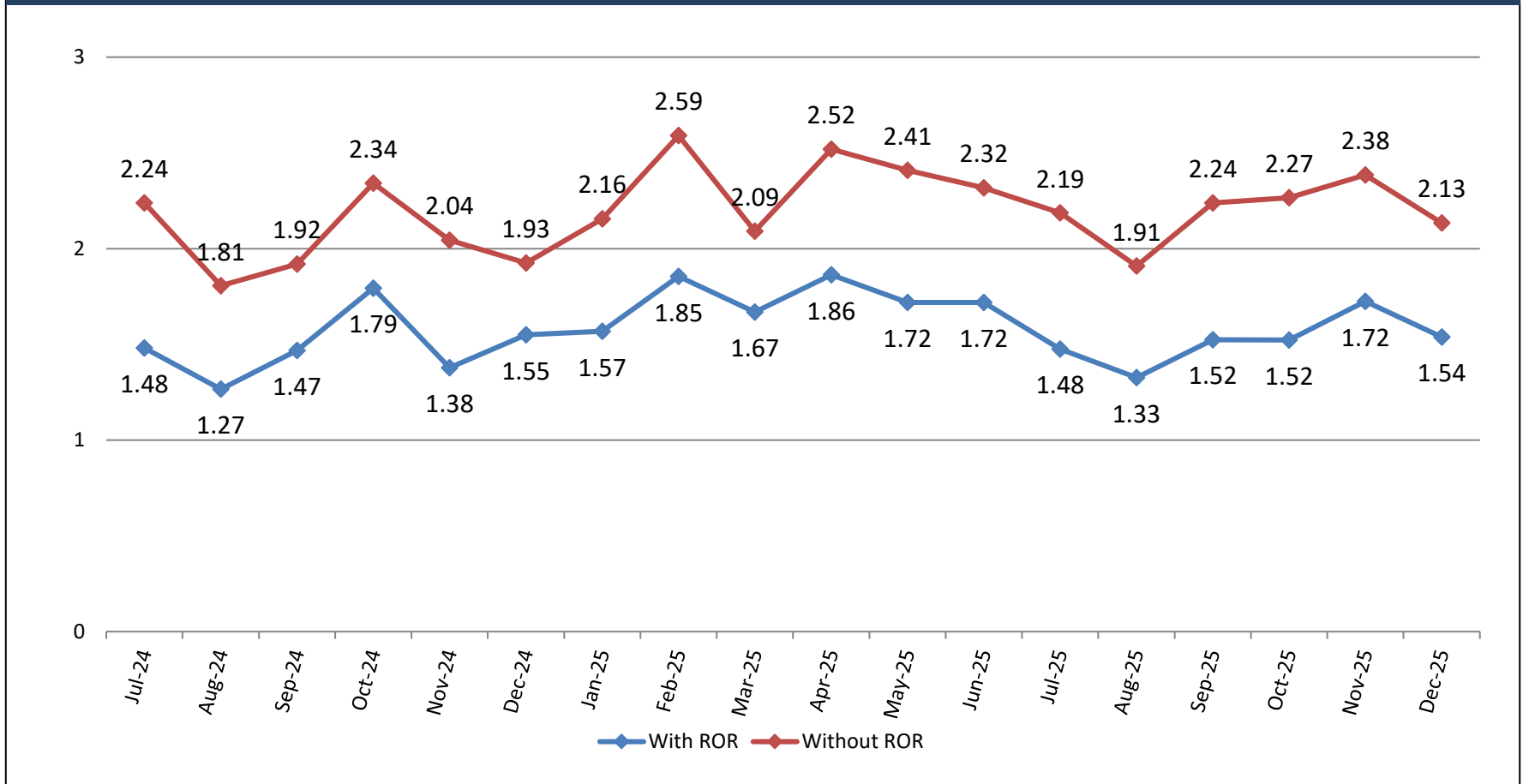
(for releases during the month)



* Data based on primary or most serious charge, regardless of status of the case.

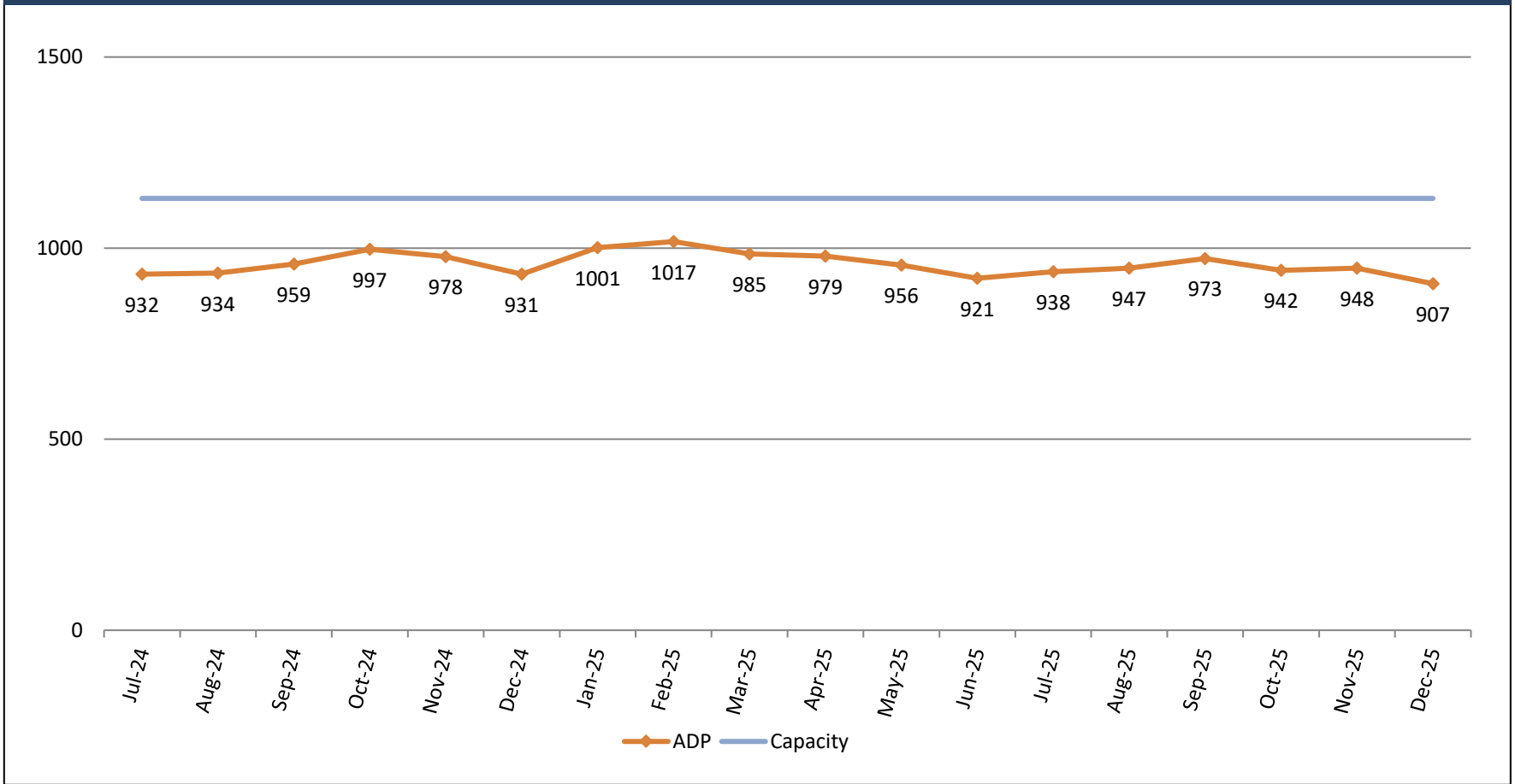
The average length of stay for releases in December was higher for Class A Felonies, Class B Felonies, Class C Felonies, Parole Violations, USM Holds and lower for Misdemeanors. County Holds was the same.

Median Length of Stay (in days)



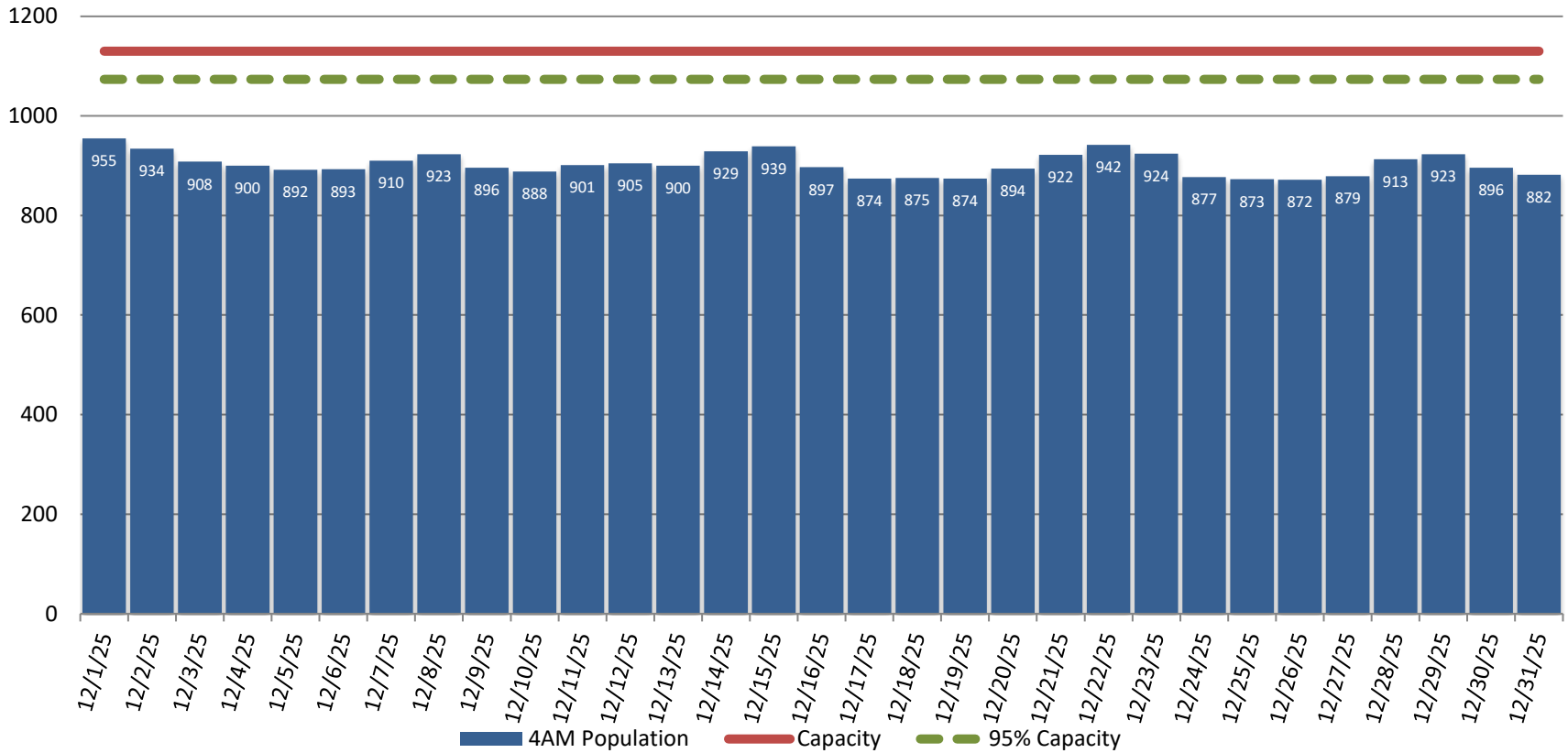
The median length of stay was 1.54 days for December releases. Removing Releases on Recognizance (ROR) results in a median length of stay of 2.13 days.

Average Daily Population



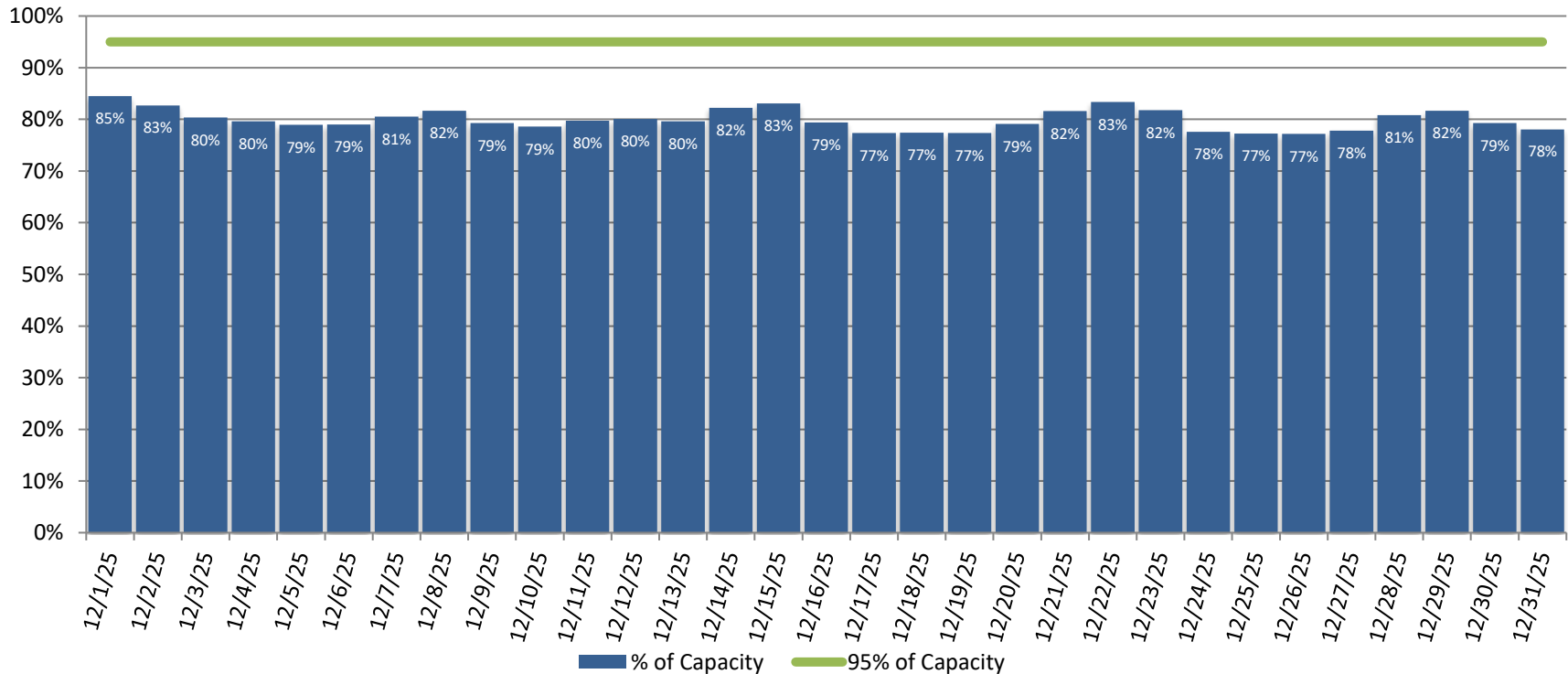
On July 1, 2023, the budgeted jail capacity increased to 1,130 jail beds. The average daily population in December was 907, which is 80% of the budgeted capacity.

Daily Population



The 4 AM daily population did not exceed 95% of budgeted capacity in December.

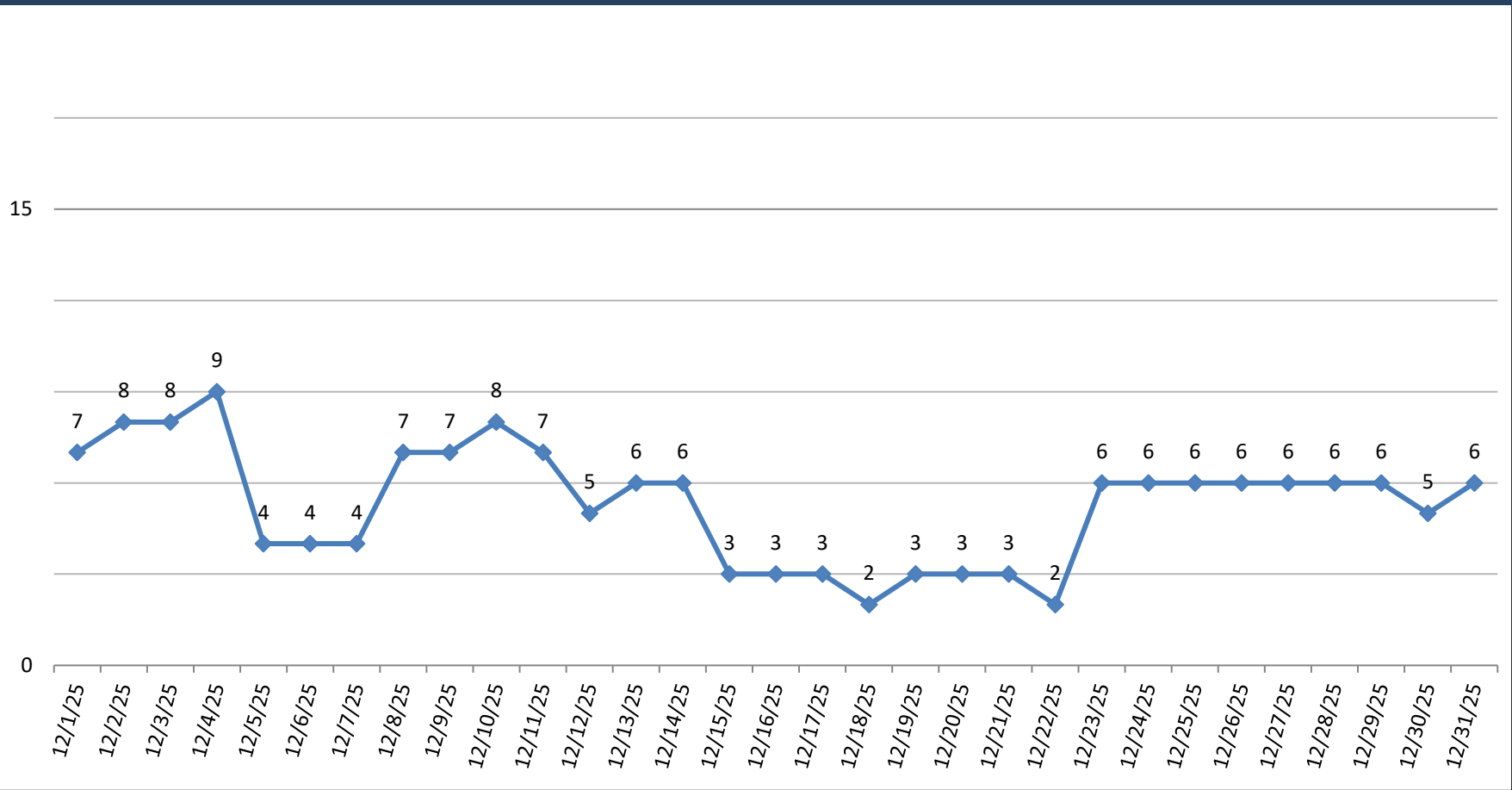
Percentage of Capacity by Day



* Red bars indicate days on which EPRs occurred. EPRs do not always or only occur when capacity exceeds the 95% threshold. Efforts are made to balance the population to the demands of the classification system for specific types of jail beds. Additionally, jail capacity varies throughout the day. These capacity calculations are based on 4 AM population counts.

On December 14, 2018, the Multnomah County Board of Commissioners adopted an amended Jail Capacity Management Plan. Renamed the Emergency Population Release Plan, the plan re-states the existence of a jail population emergency when the population exceeds 95% of capacity (1,130) and updates the processes established to resolve the emergency.

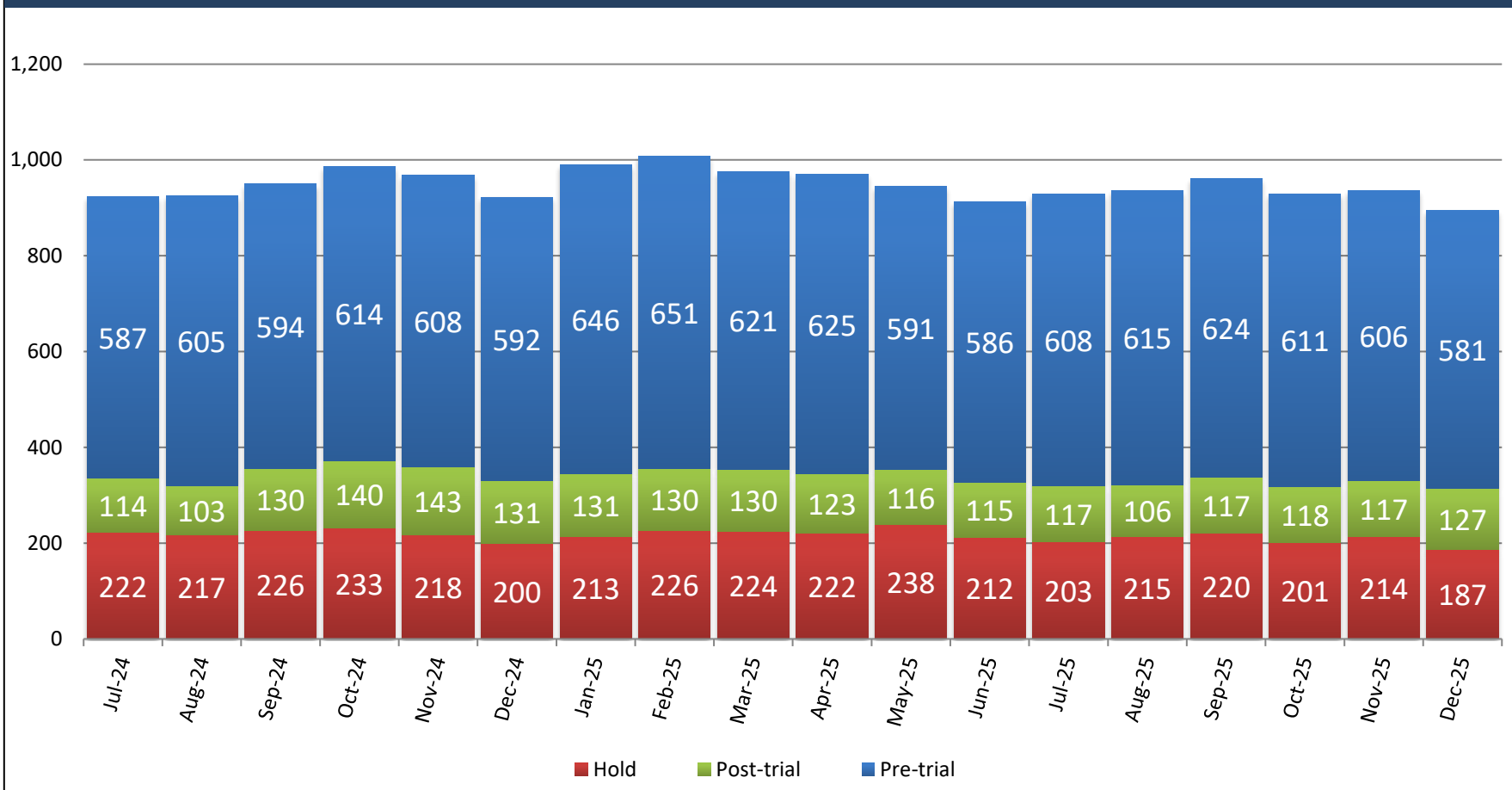
Daily Count of Exclusive U.S. Marshal Adults in Custody



December averaged 5 US Marshal adults in custody per day. As US Marshal counts per day may change over time, these data are as of January 5, 2026.

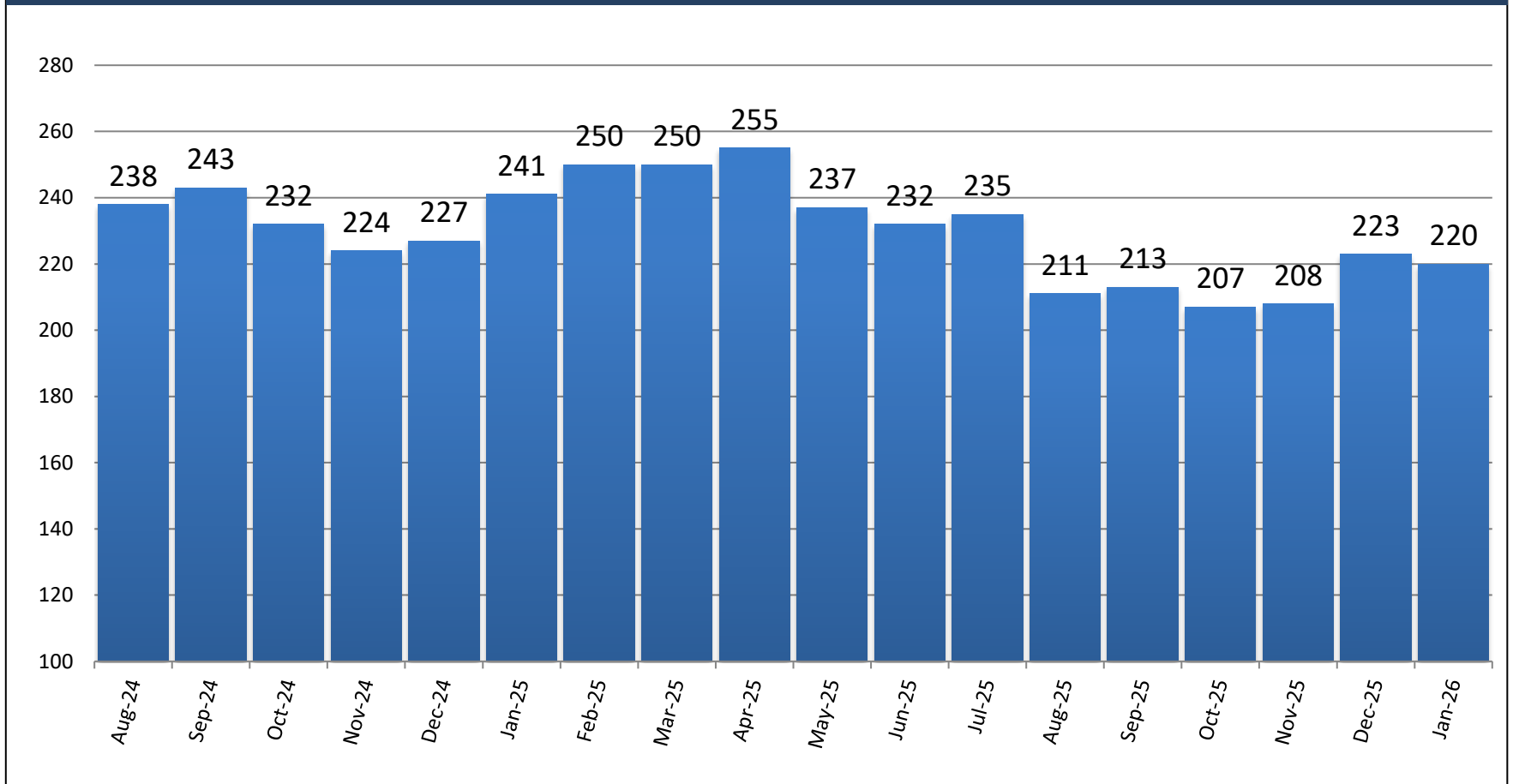
Pre-Trial vs. Post-Trial vs. Holds in Custody

Average Daily Population



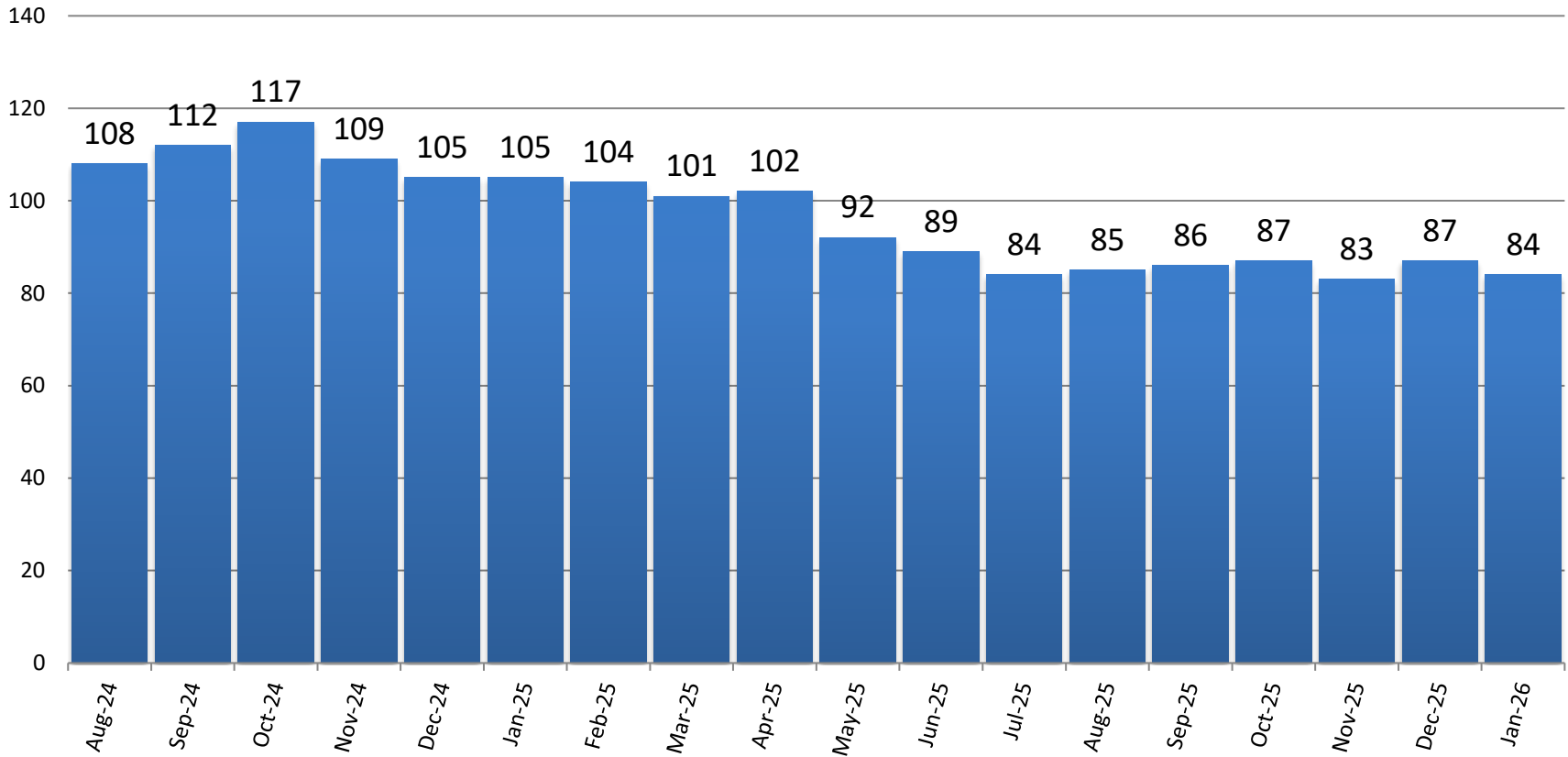
In December, the average daily population of those pre-trial and with holds decreased. Those that are post-trial increased.

Count of Persons Held Pre-trial more than 150 Days on First Day of Month



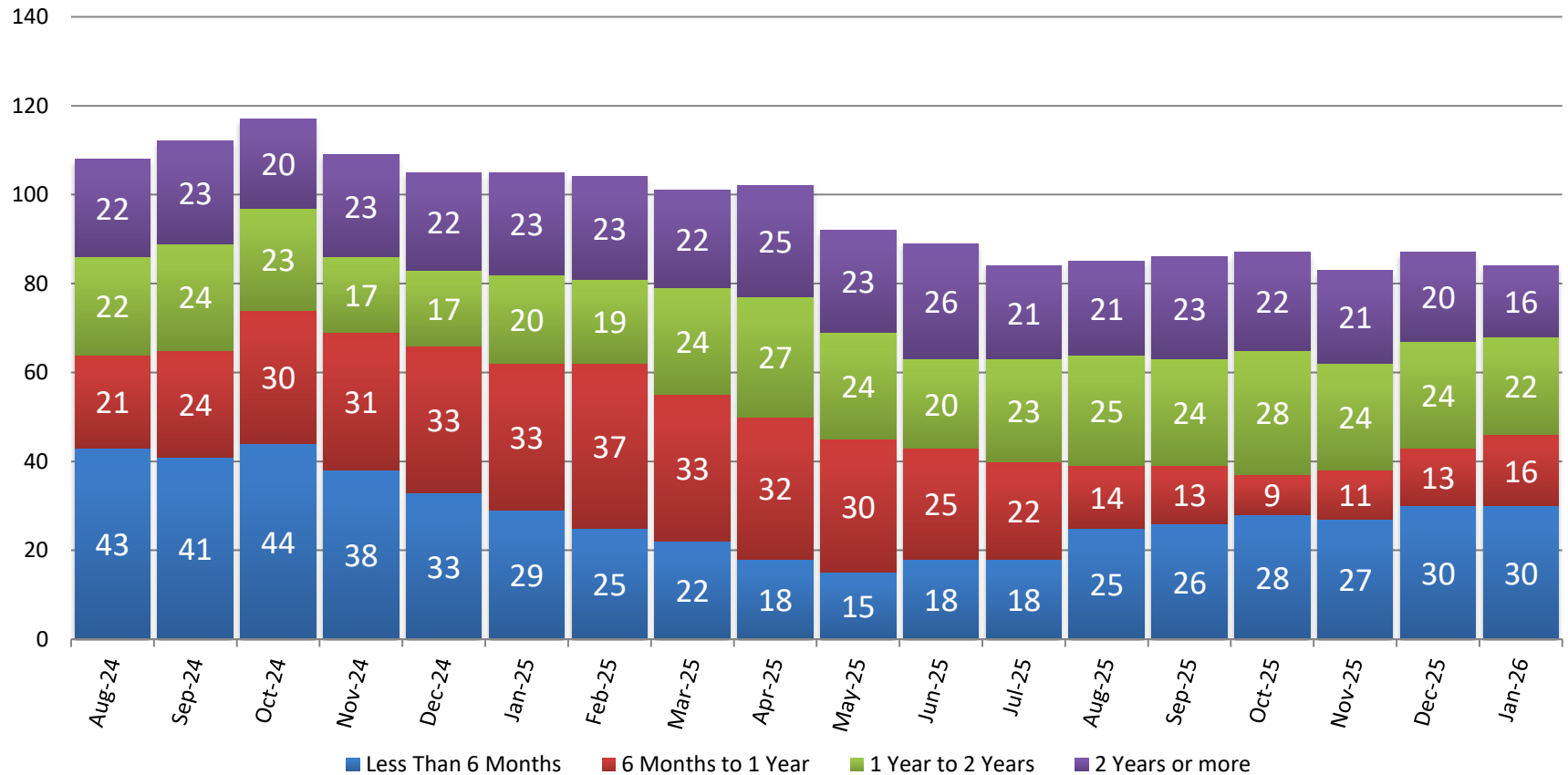
On January 01, 2026, 220 people were held in pre-trial custody for more than 150 days.

Count of Persons Held Pre-trial on Murder Related Charges on First Day of Month



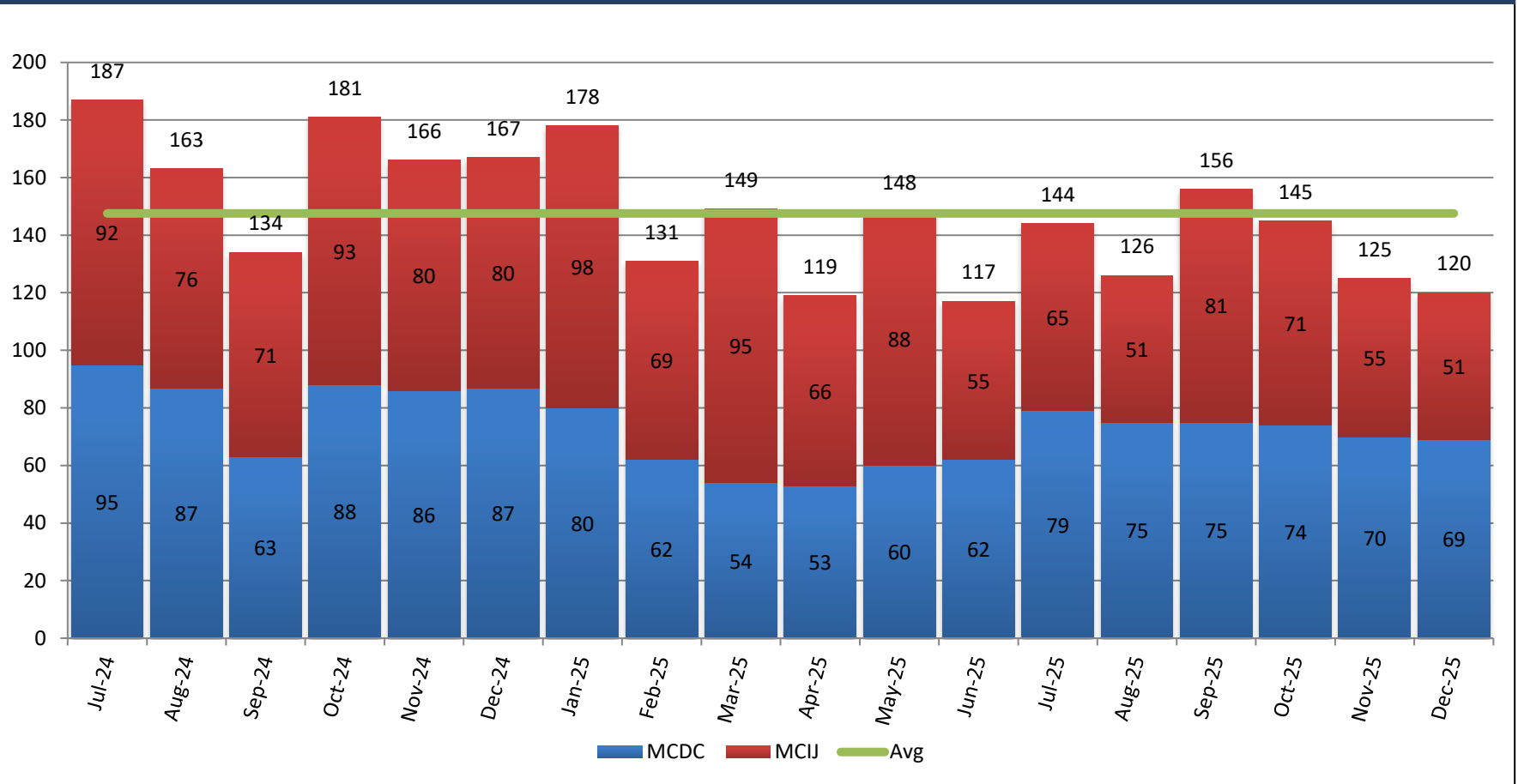
There were 84 people held pre-trial on murder related charges on January 01, 2026.

Count of Pre-trial Persons with Murder Related Charges by Length of Stay on First Day of Month



Persons held on murder related charges tend to have higher lengths of stay while awaiting the outcomes of their trials. Monitoring this group provides information about how quickly these serious charges are resolved.

Jail Misconduct Hearings



Tracking the number of misconduct hearings informs jail management about classification, housing, and other operational issues.