

MULTNOMAH COUNTY SHERIFF'S OFFICE

Monthly Jail Report, September 2011



Multnomah County Sheriff's Office - Dan Staton, Sheriff
501 SE Hawthorne Blvd., Suite 350 Portland OR 97214
503-988-4300 (TTY 503-988-4500) www.mcso.us/public/

Welcome to the Multnomah County Sheriff's Office Monthly Jail Report!

This report is a monthly publication of MCSO's Resource Analysis Unit. We are eager to hear any suggestions or feedback you may have. Please feel free to contact any one of us in the RAU:

David Braaksma
Markley Drake
Wendy Lin-Kelly

503-988-4300

September Summary (and reference page):

Standard bookings: 2879 (p. 3)

Average Length of Stay: 14.29 days (p. 8)

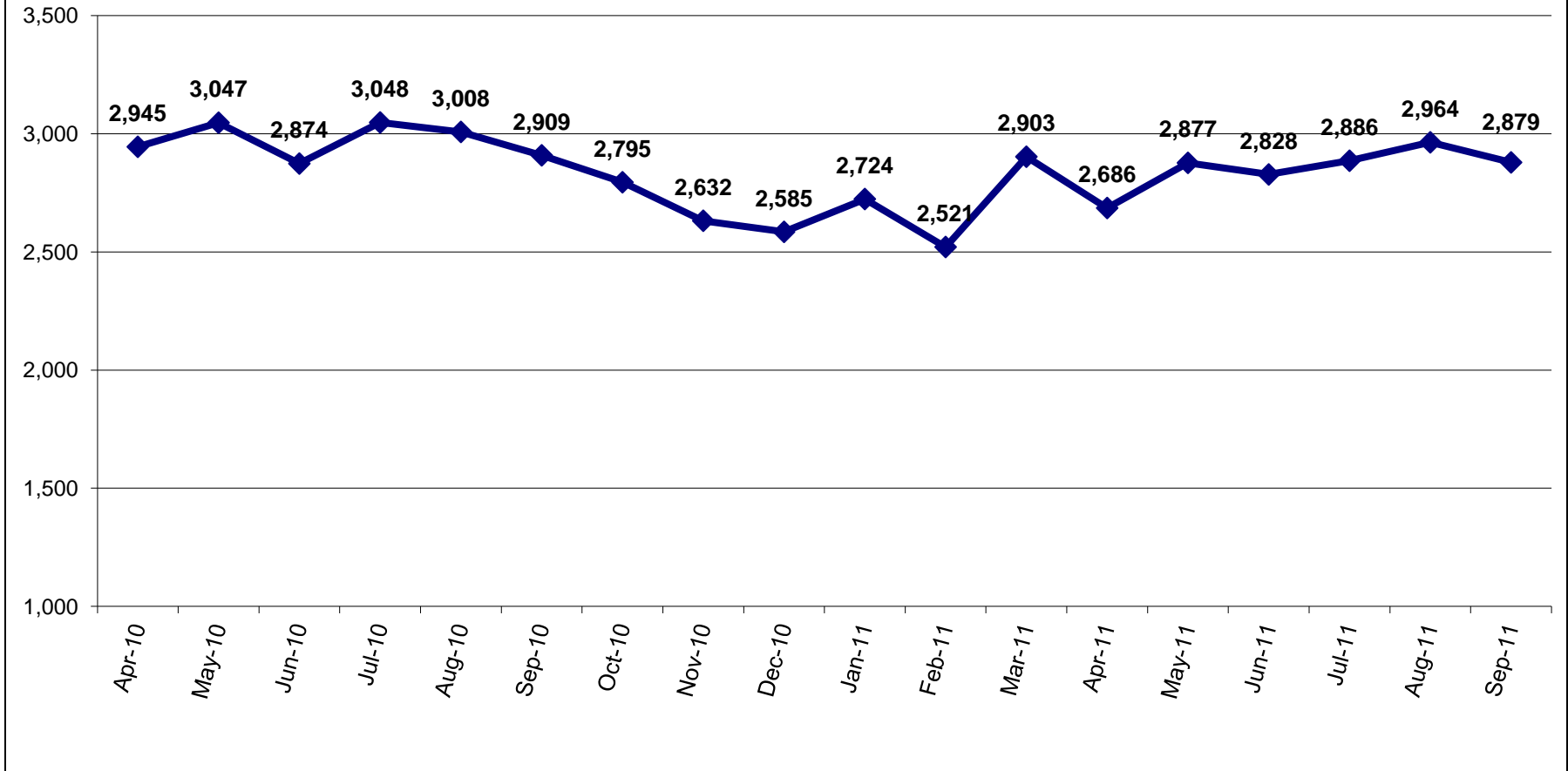
Capacity: 1310 beds (p. 10)

Average Daily Population: 1265, 97% of capacity (p. 10)

Forced Releases (Emergency Population Releases): 44 (p. 14)



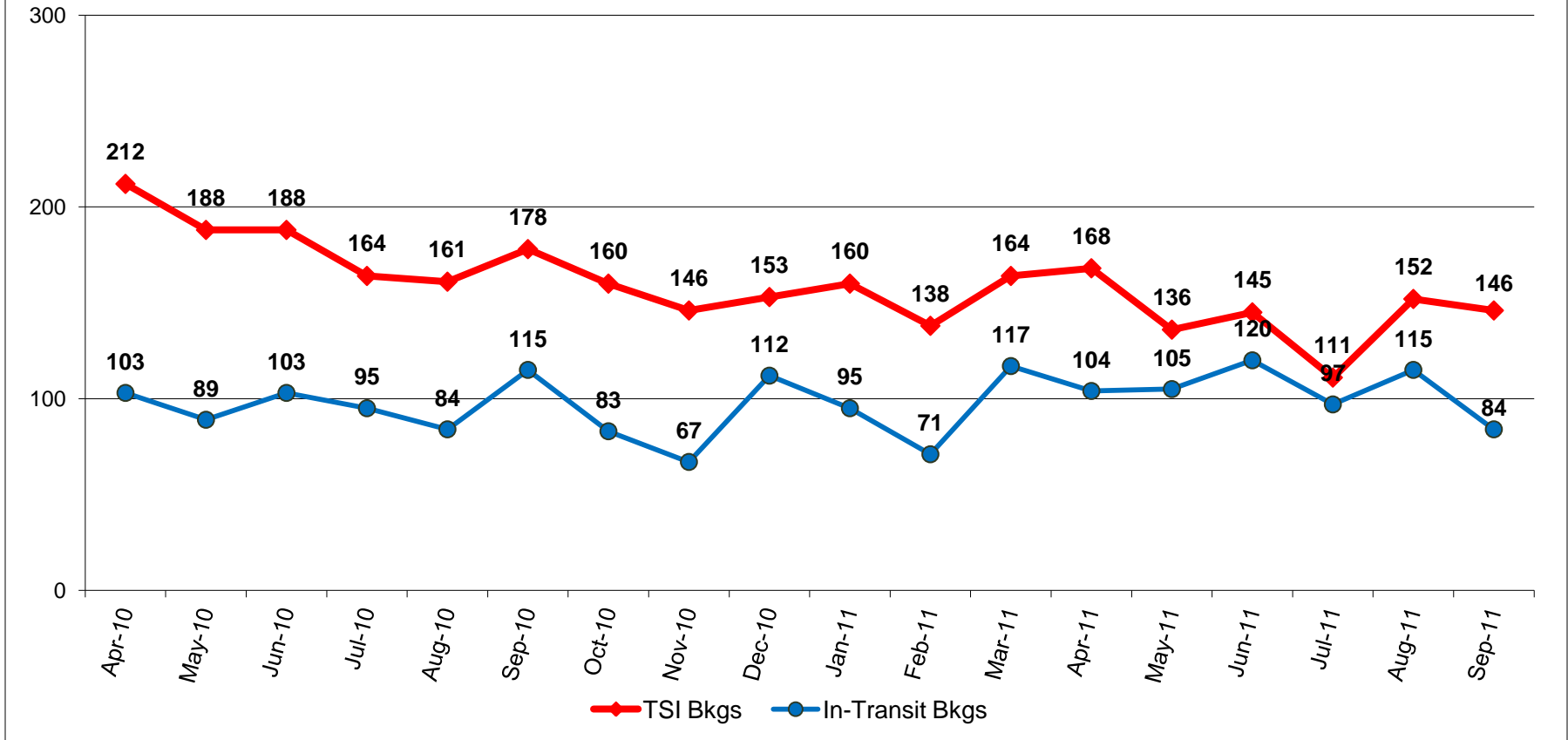
Standard Bookings



Standard bookings totaled 2879 in September 2011, averaging 96 bookings per day.



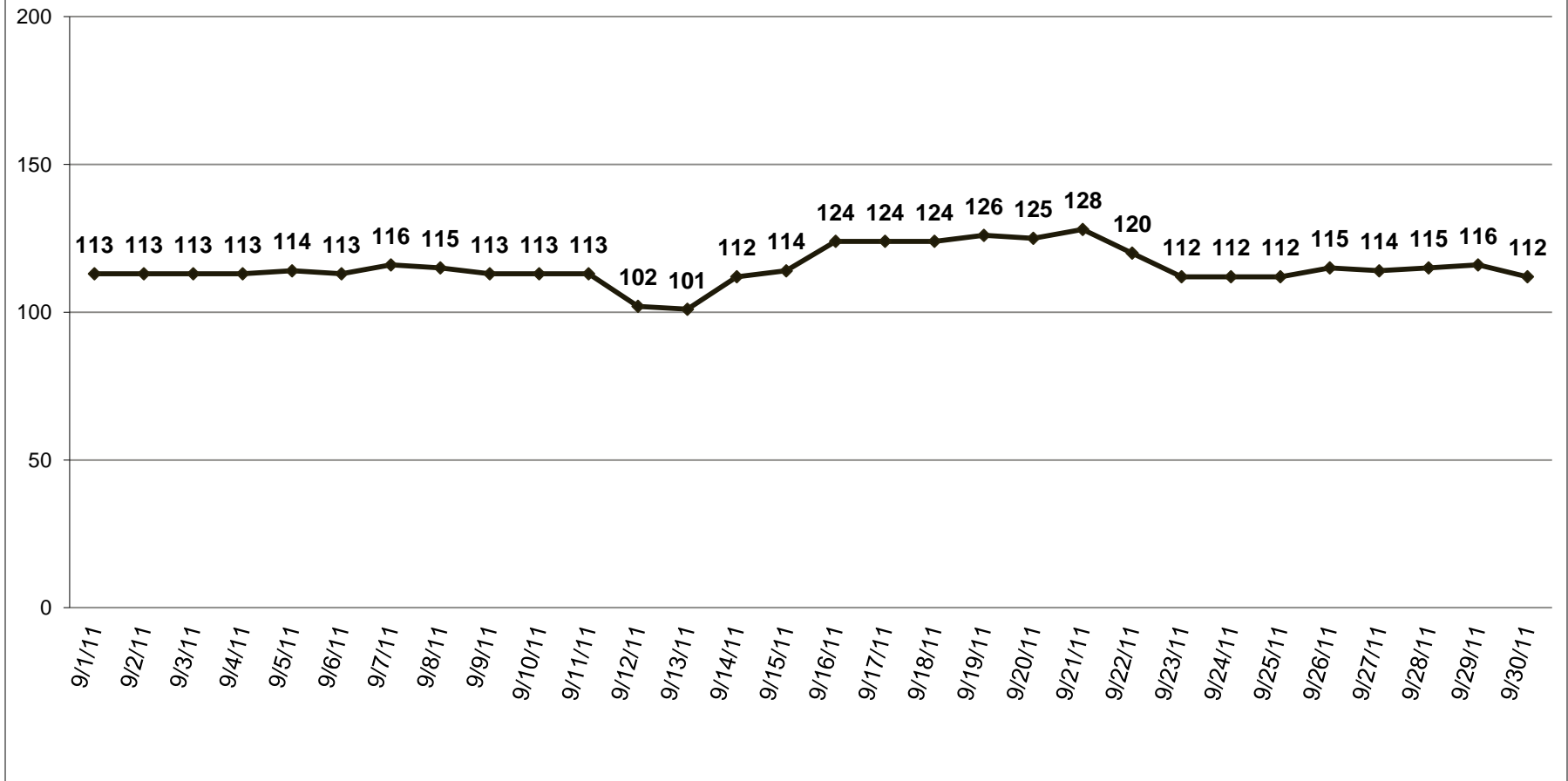
Turn-Self In and In-Transit Bookings



Turn-Self In (TSI) bookings are where an offender has been sentenced and ordered to return to jail at a later date. In-Transit bookings are of those being held for other jurisdictions while being transported. The number of TSI bookings and In-Transit bookings both decreased between August and September.



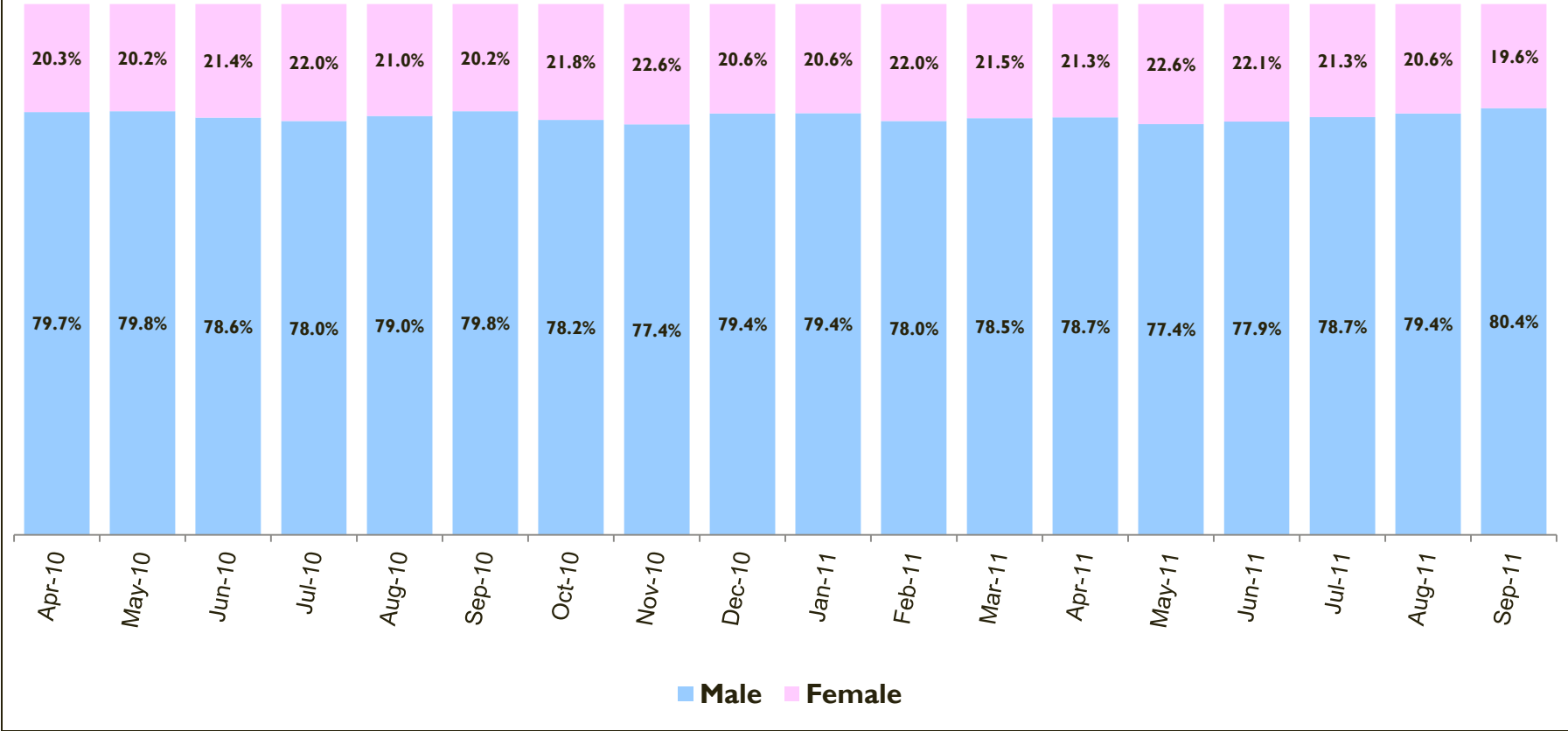
Daily Count of Exclusive U.S. Marshal Inmates



US Marshal inmates averaged 115 per day in September 2011. As US Marshal inmate counts per day may change over time, these data are as of October 3, 2011.



Gender Composition of Bookings

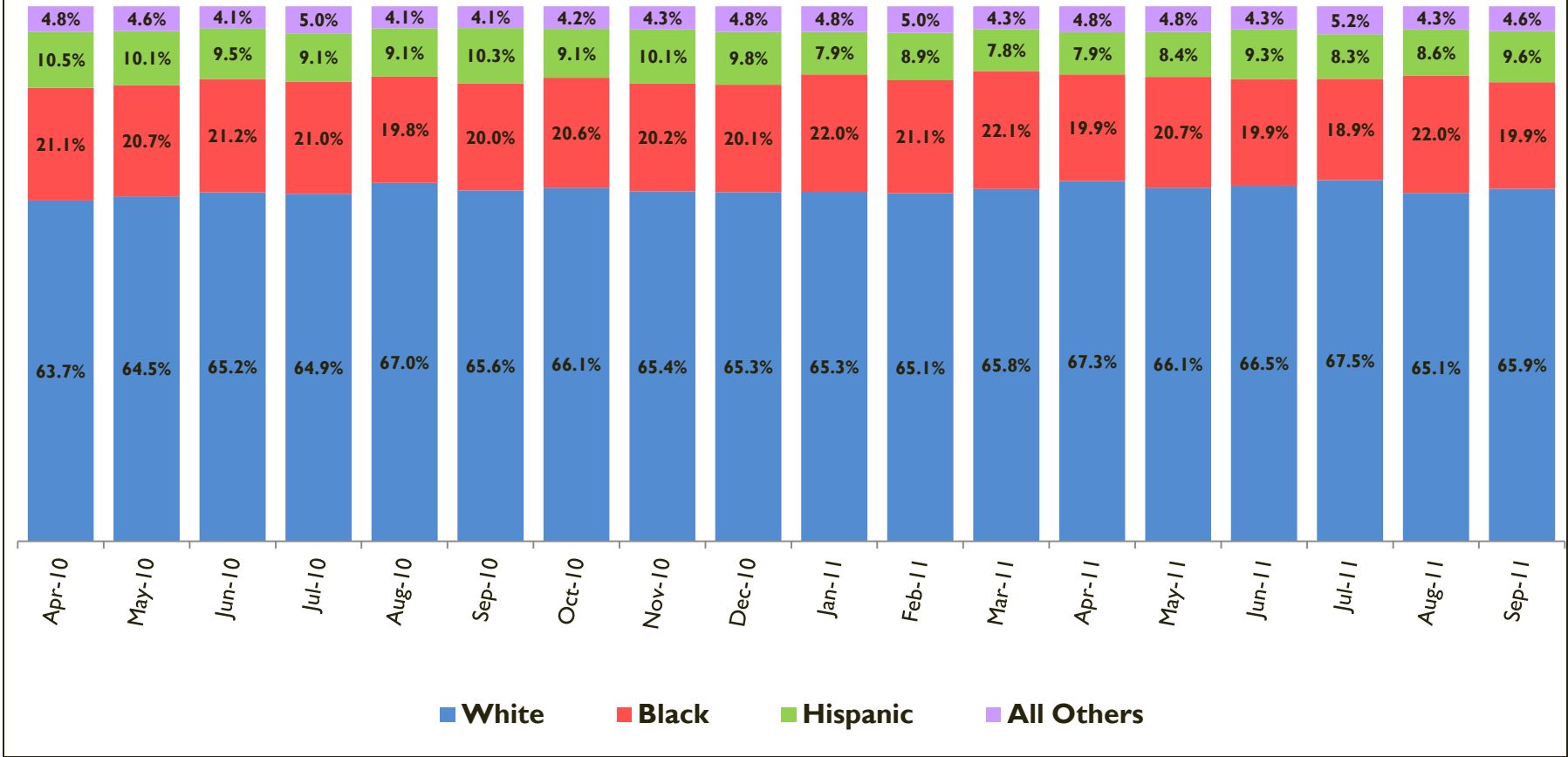


*Includes standard and TSI bookings.

The percent of females and males booked is typically between 18 - 23% and 77 - 82%, respectively.



Ethnic Composition of Bookings

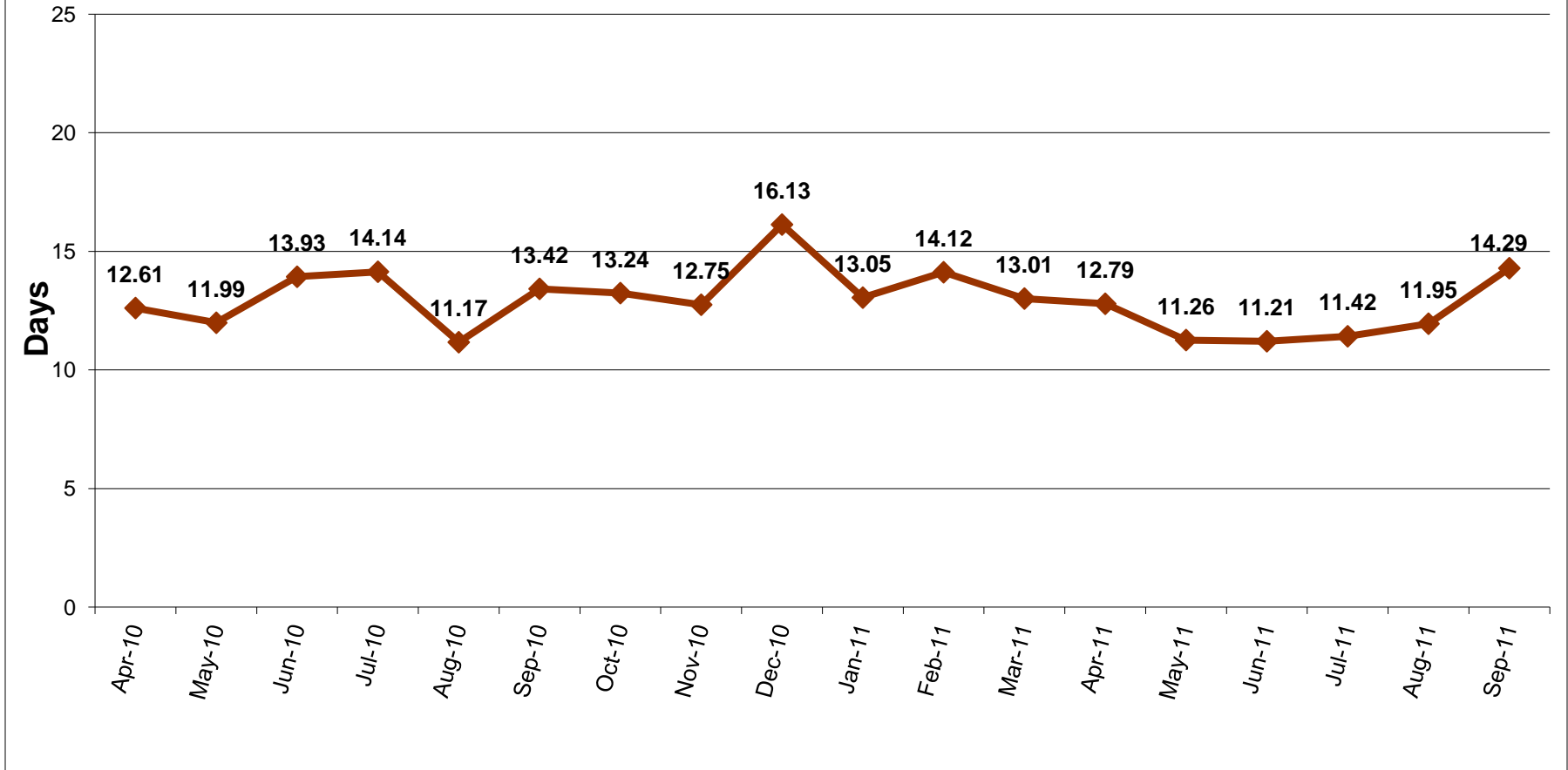


*Includes standard and TSI bookings.

The ethnic composition of bookings is relatively stable month to month. Approximately two-thirds of those booked are White.



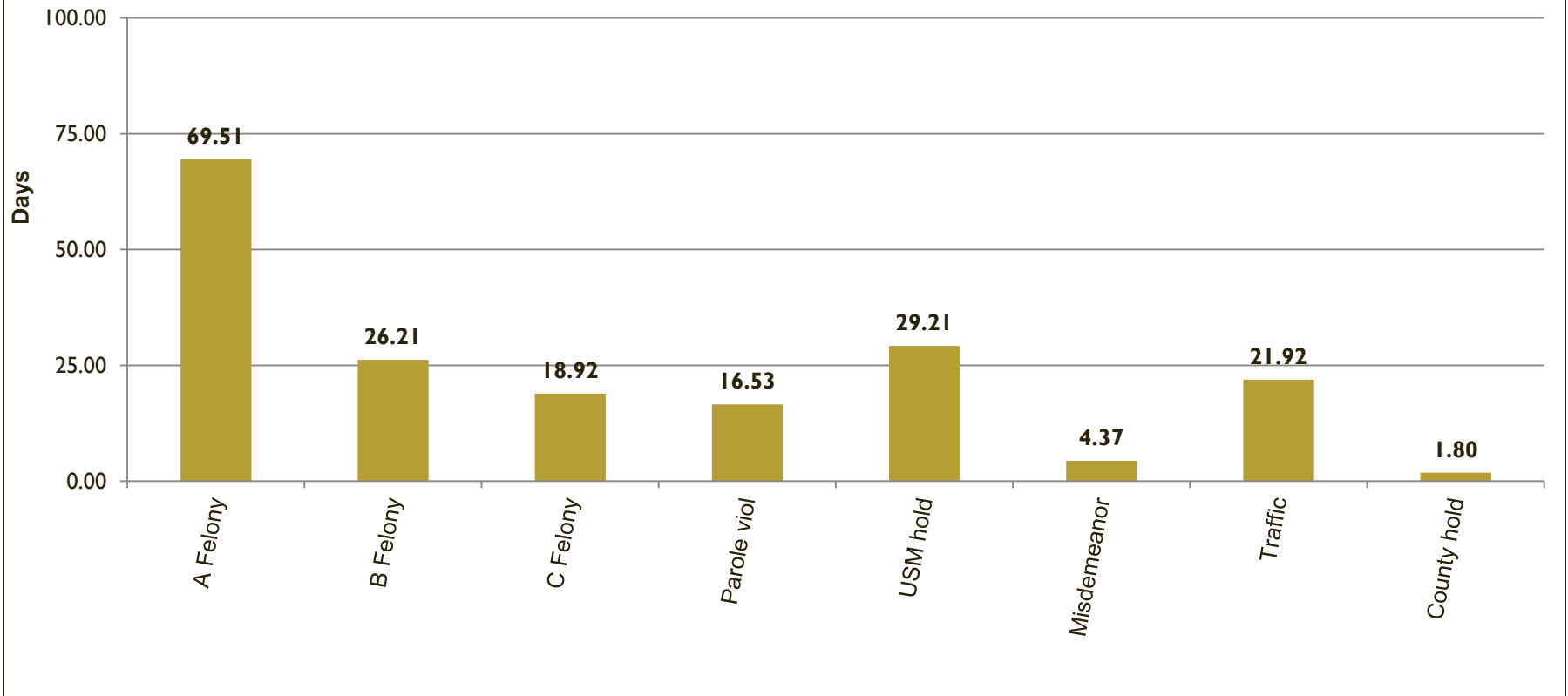
Average Length of Stay (in days)



The average length of stay was 14.29 days for inmates released in September.



Average Length of Stay by Charge Priority (for inmates released during the month)

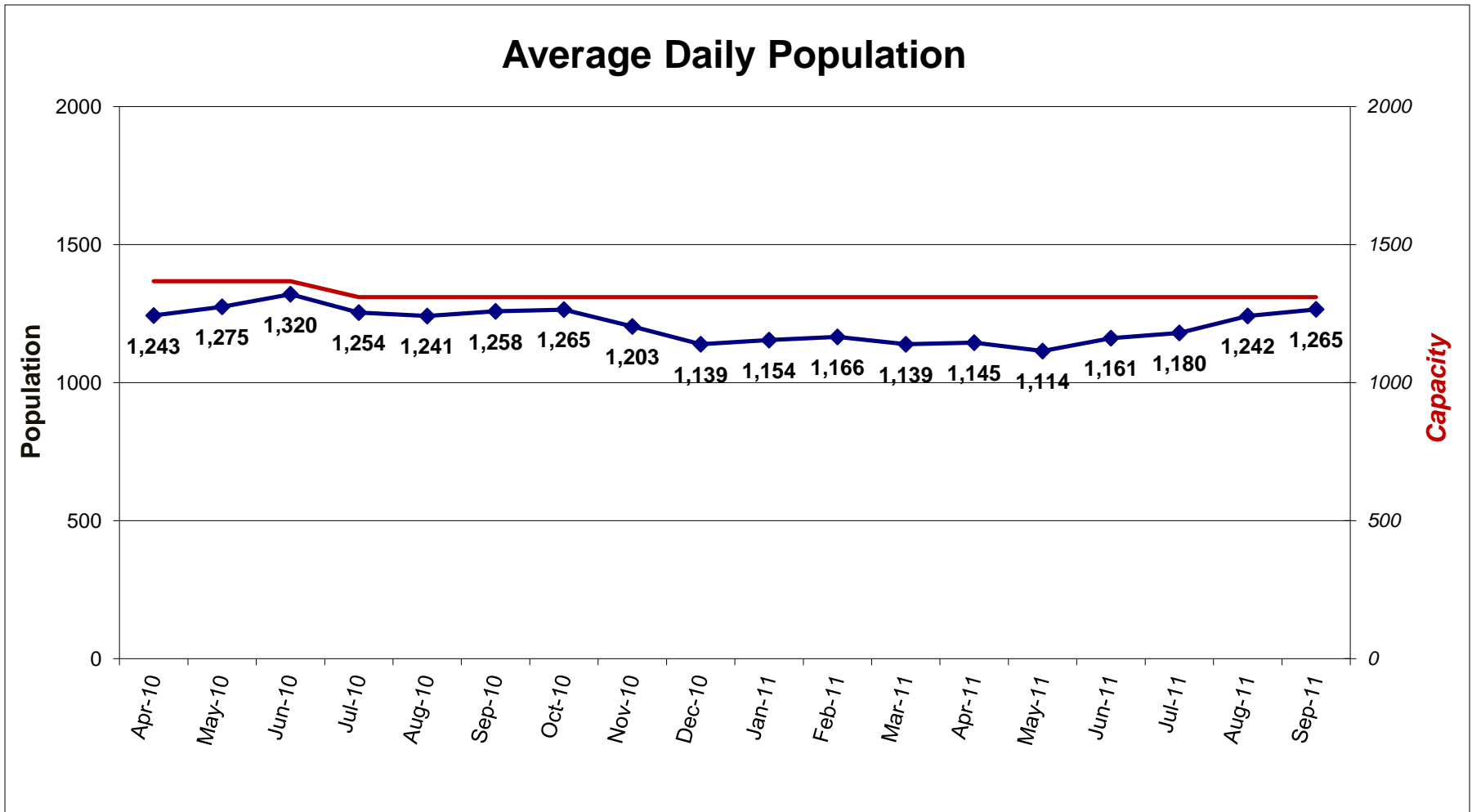


*Data based on primary or most serious charge, regardless of status of the case.

In September 2011, 989 inmates with felony charges were released. They had an average length of stay of 27 days. The 1317 inmates released with misdemeanor charges had an average length of stay of just over 4 days.



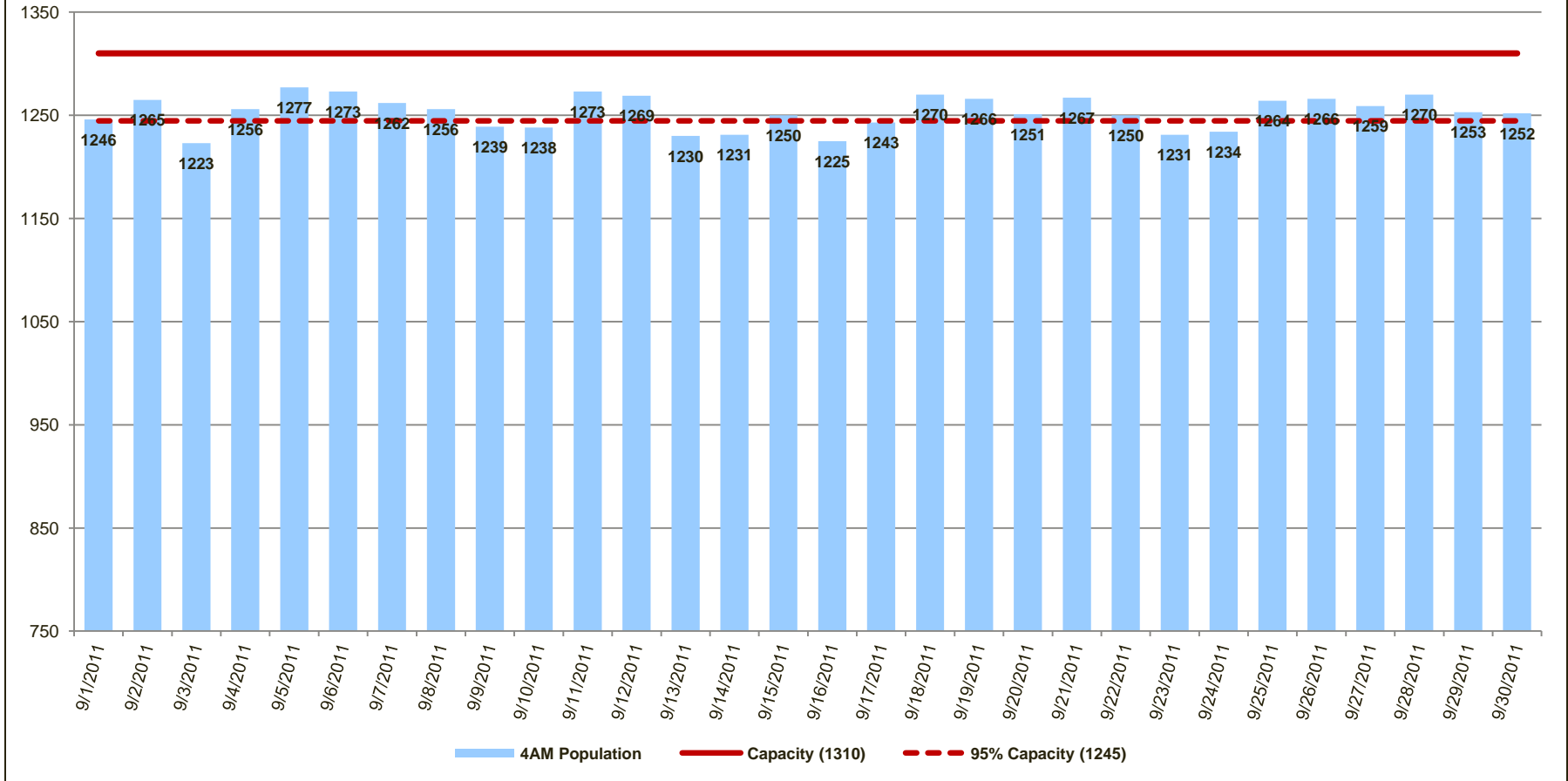
Average Daily Population



On July 1, 2010, the capacity of Multnomah County's two jail facilities was reduced from 1367 to 1310. The average daily population in September 2011 was 1265, which is 96.6% of capacity.



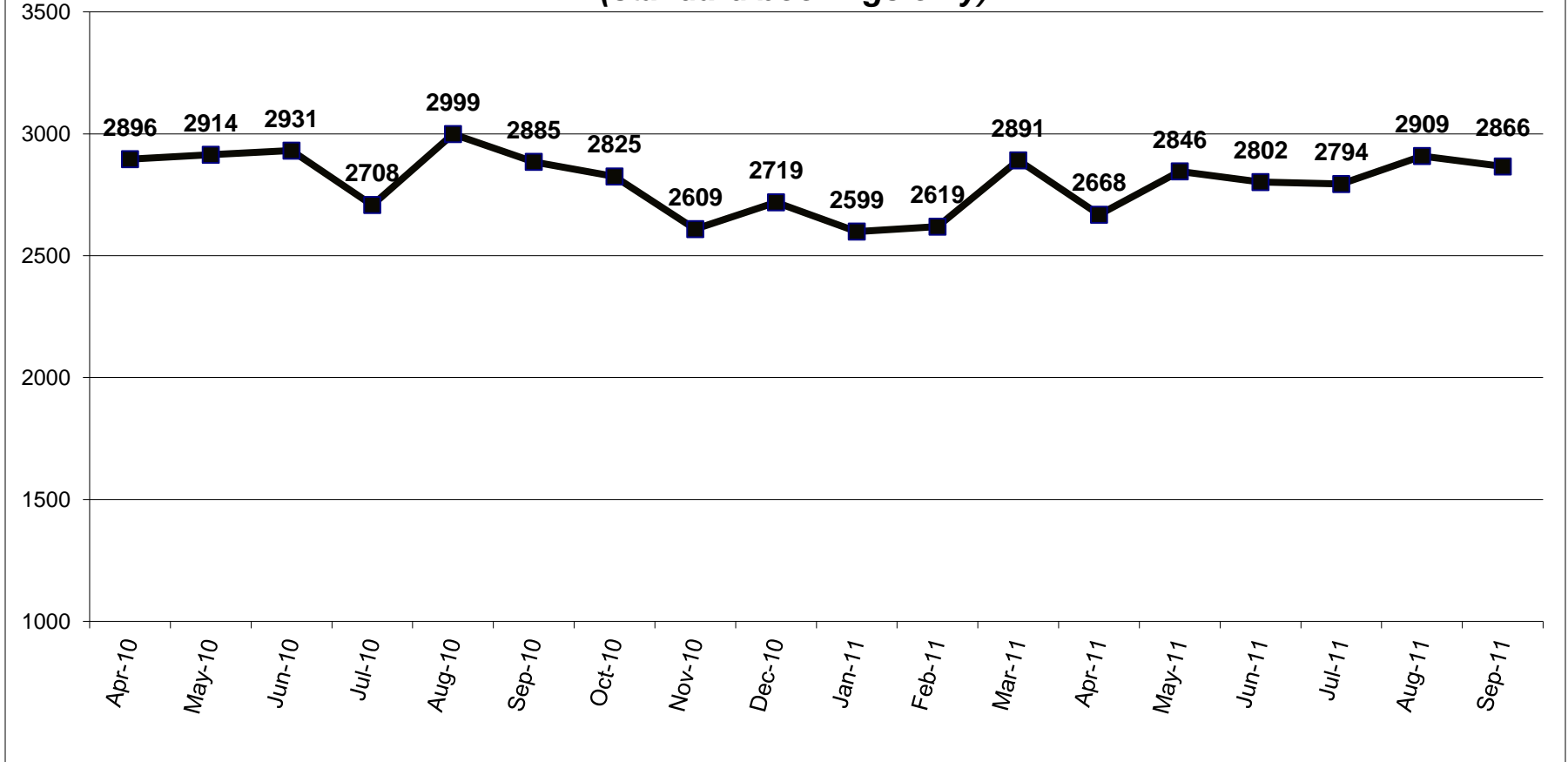
Daily Population



The daily population was above 95% of budgeted capacity on twenty-one days in the month of September.



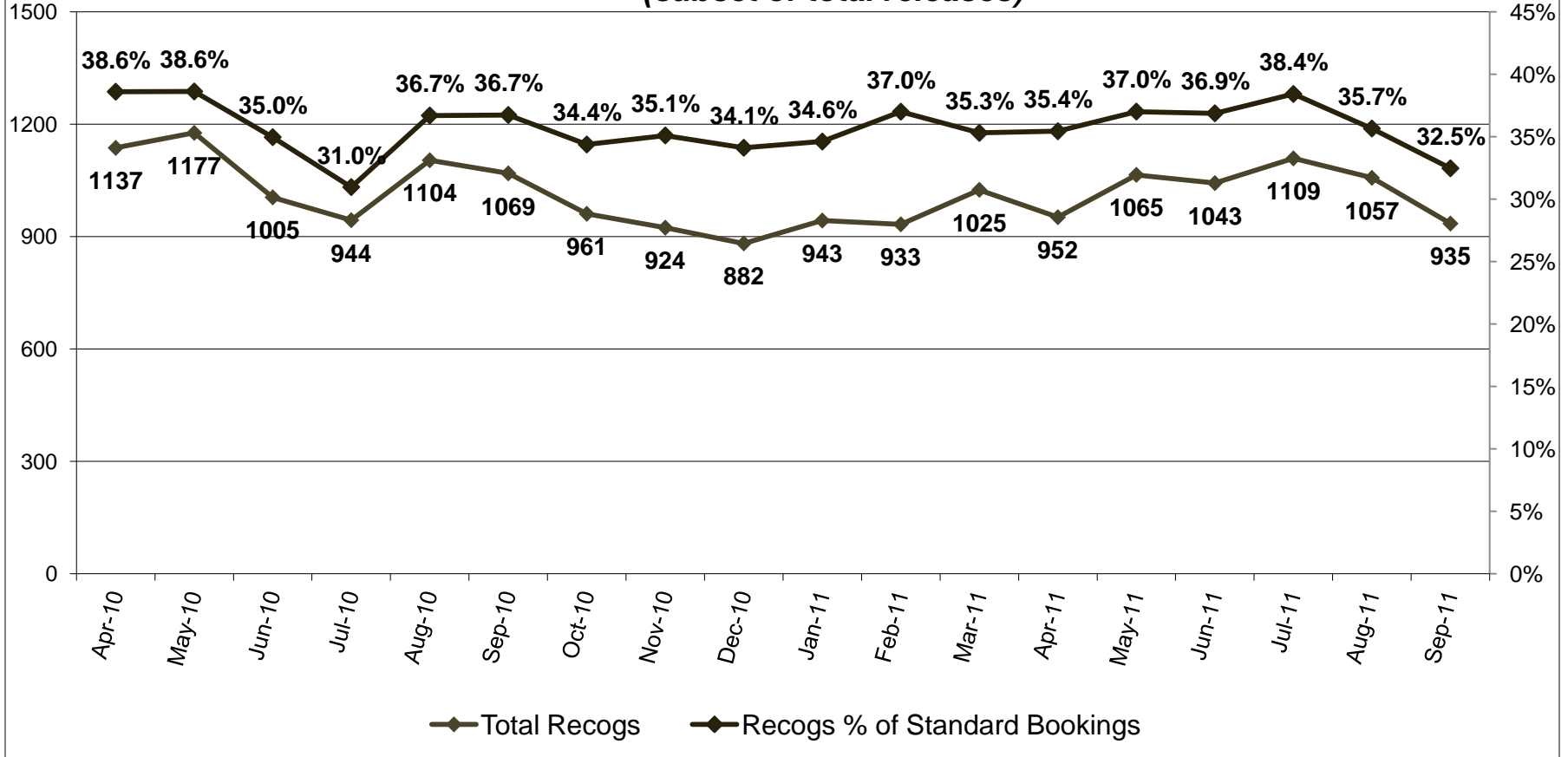
Total Releases (standard bookings only)



Releases per day among standard bookings averaged 94 per day in August and 96 per day in September.



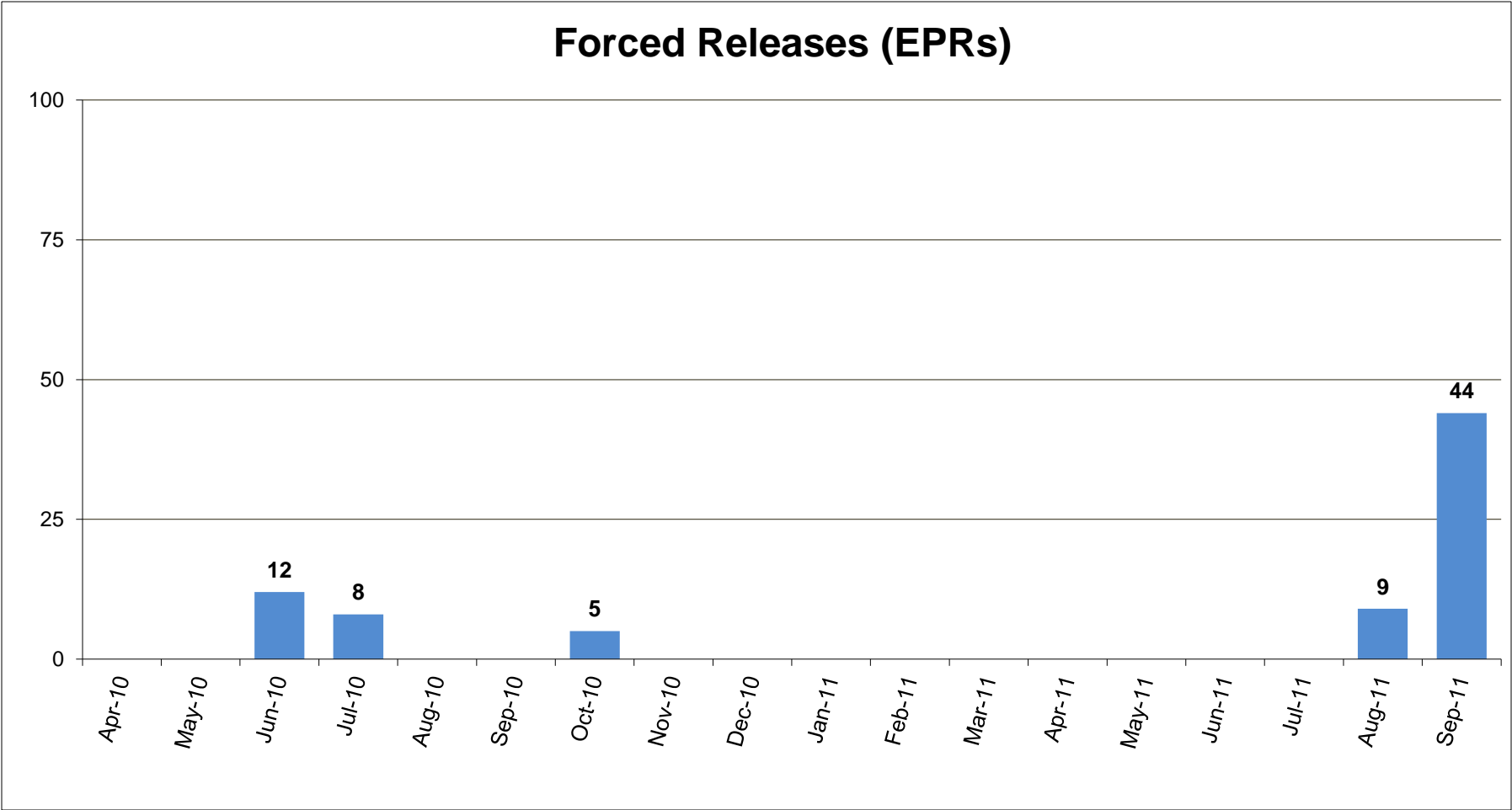
Recognizance Releases (subset of total releases)



Recognizance releases averaged 31 per day in September. The percentage of recognizance releases to standard bookings decreased between August and September.



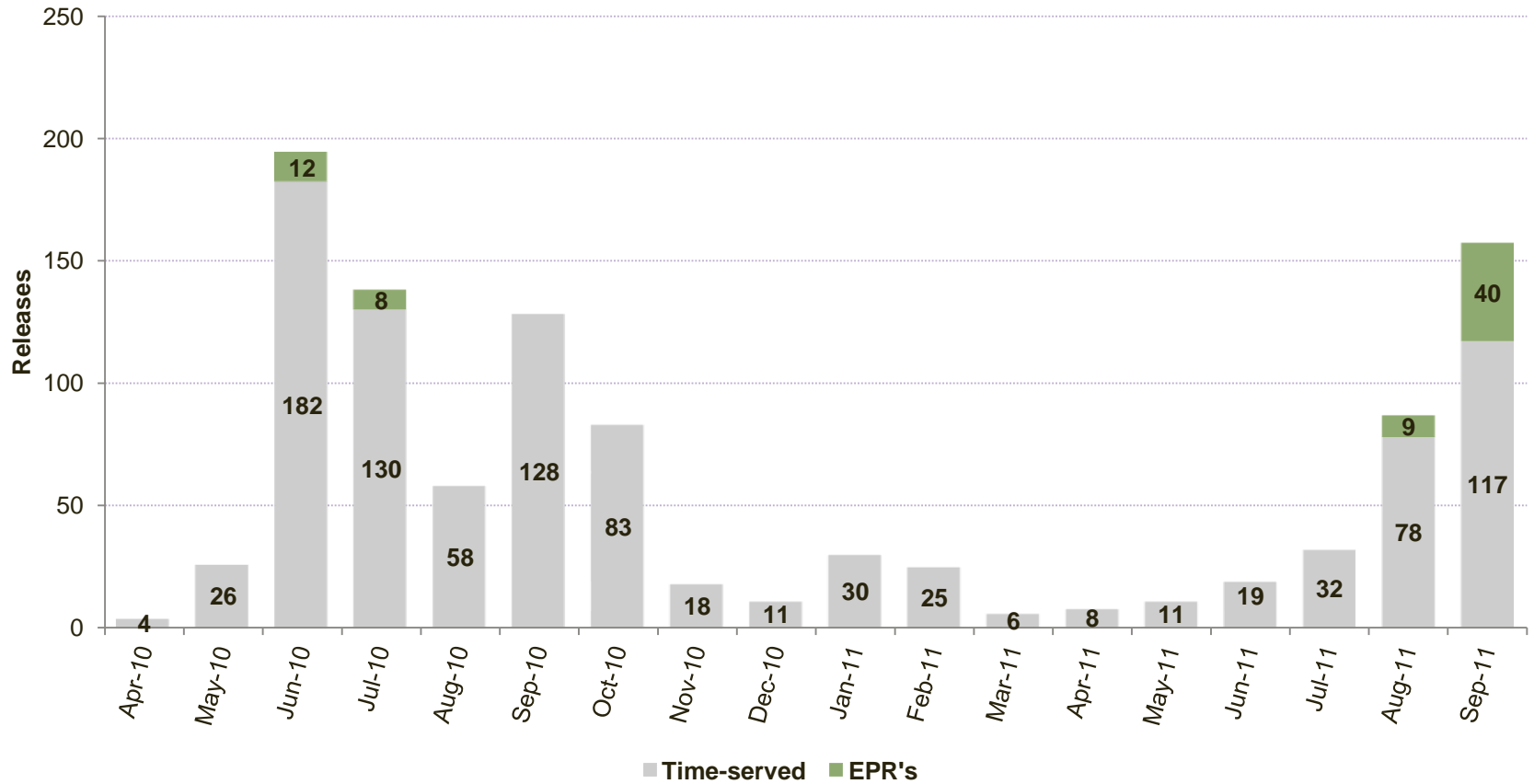
Forced Releases (EPRs)



*Forced releases may occur per Multnomah County Board Resolution 04-135 as part of the jail capacity management plan. A total of 44 inmates were forced released on eight separate days in September 2011.



Releases between 12 AM and 8 AM*

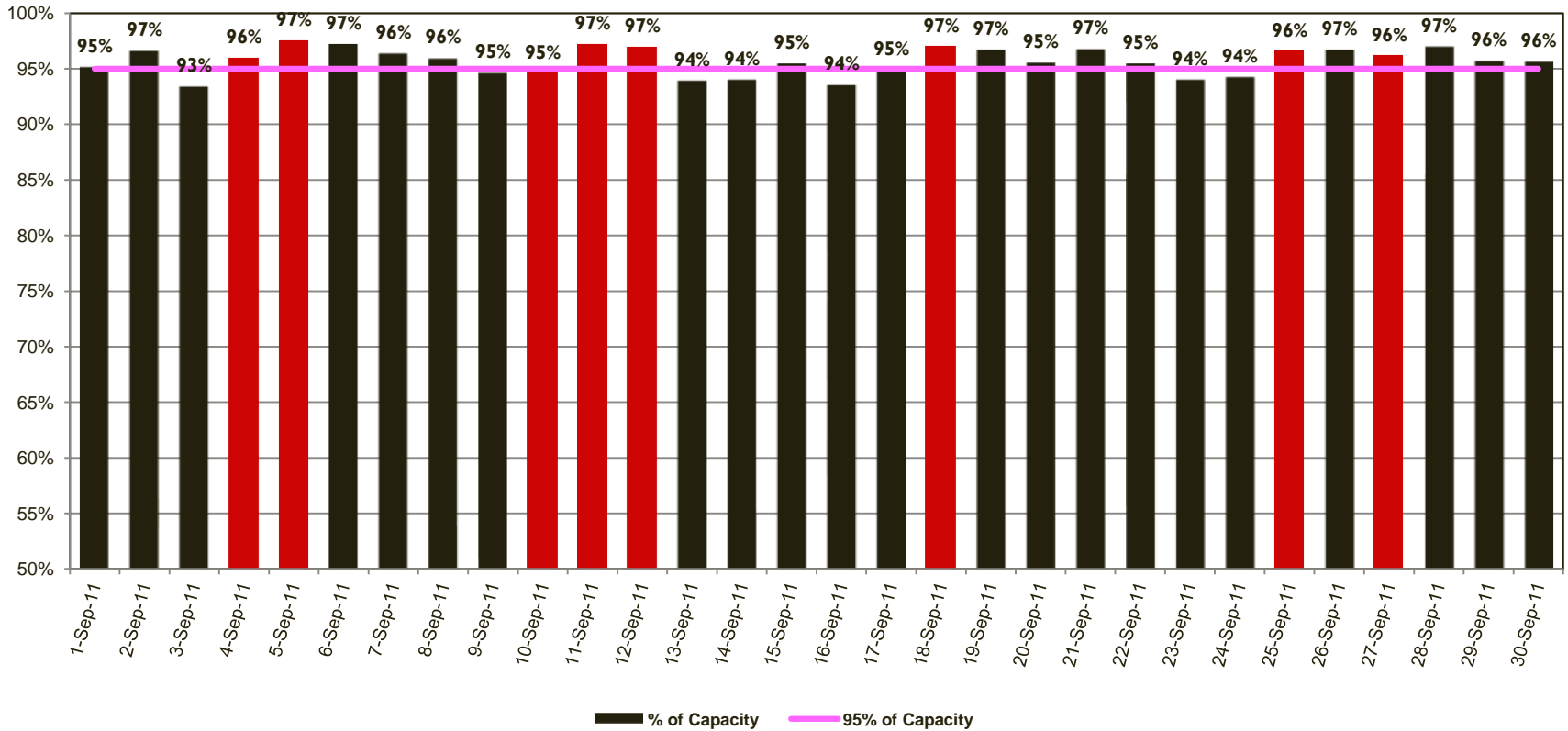


*Non-discretionary court-ordered and recognizance releases are not included.

In September 2011, 117 time-served inmates were released from jail between the hours of 12AM and 8AM. Also, 40 emergency population releases in September were between 12AM and 8AM.



Percentage of Capacity by Day*

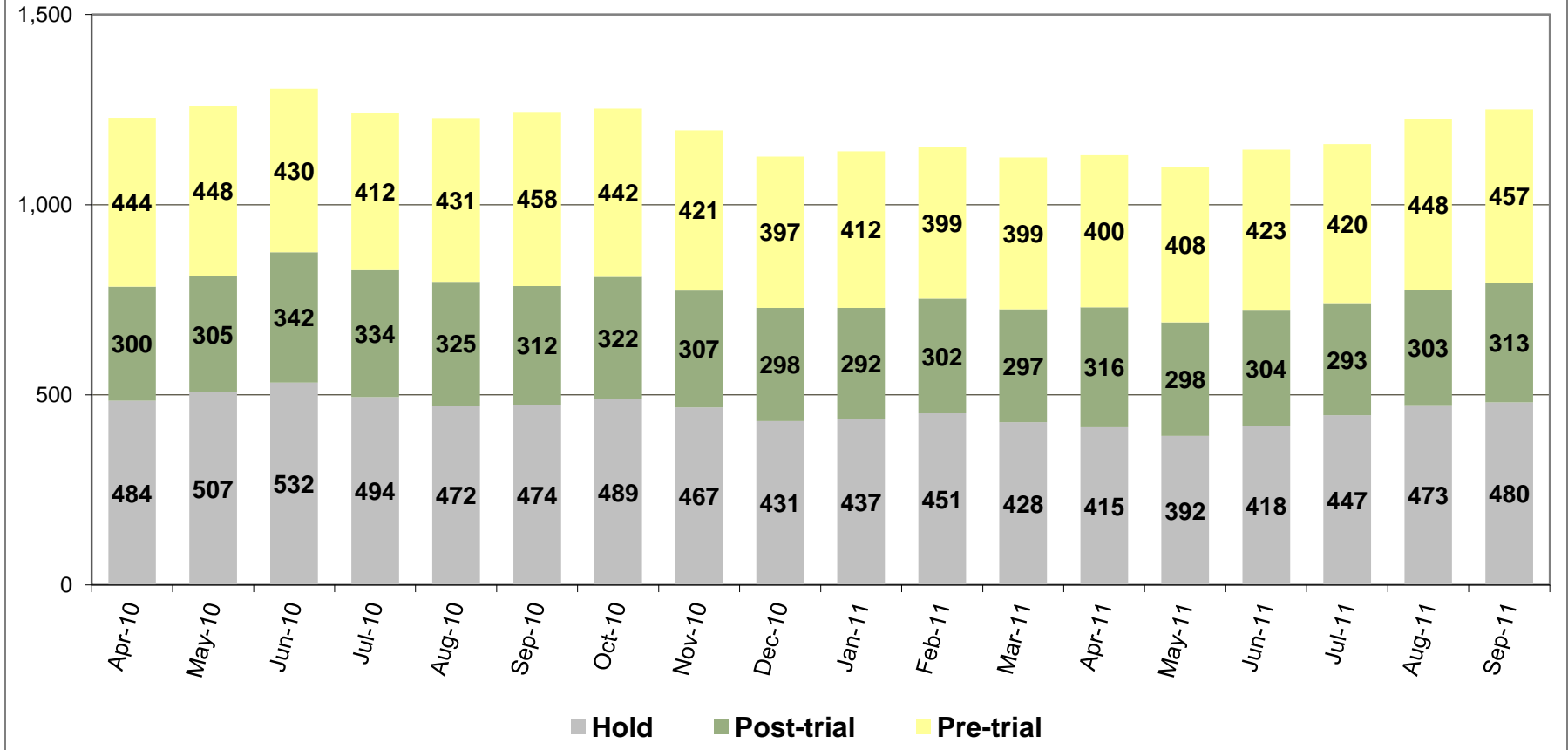


*Red bars indicate days on which EPRs occurred, if any. EPRs do not always or only occur when capacity exceeds the 95% threshold. Efforts are made to balance the population to the demands of the classification system for specific types of jail beds and balance the space needs for male or female inmates. Additionally, jail capacity varies throughout the day. These capacity calculations are based on 4 AM population counts.

On September 23, 2010, the Multnomah County Board of Commissioners adopted Resolution No. 2010-141 whereby if the number of inmates housed within the Multnomah County jail system reaches 95% of the population limit, a county jail population emergency will exist.



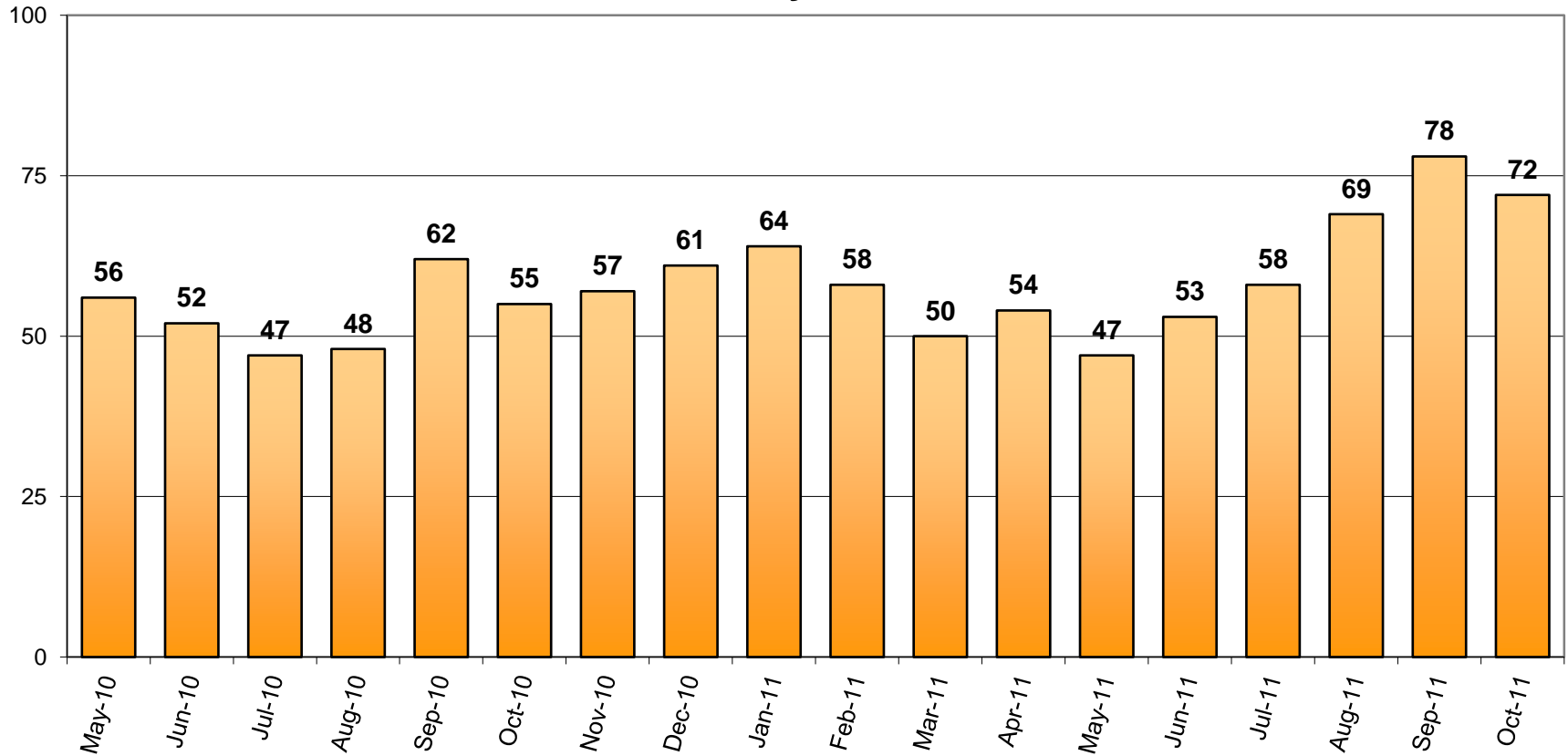
Pre-Trial vs. Post-Trial vs. Holds in Custody Average Daily Population



The average number of inmates jailed on holds, post-trial and pre-trial all increased between August and September.



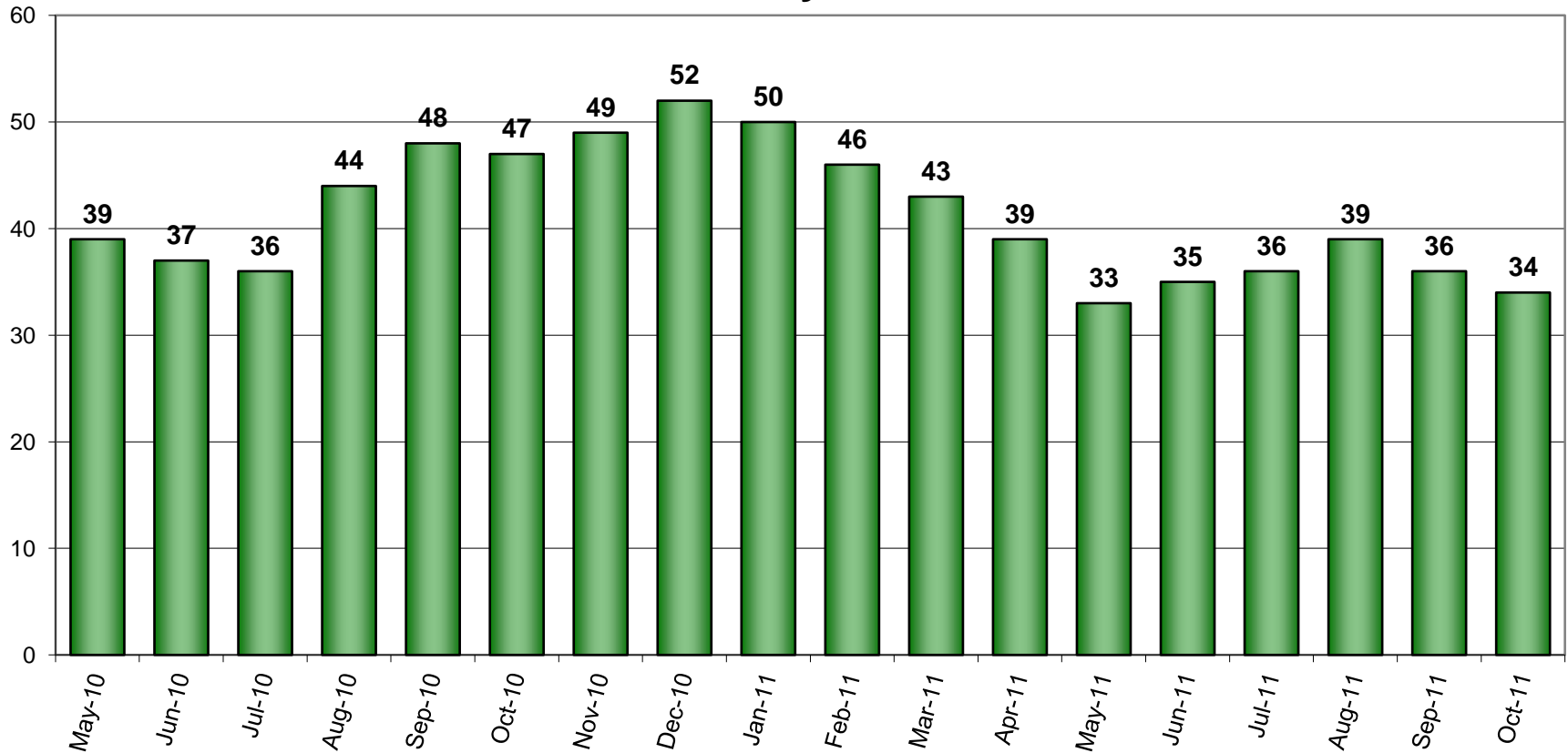
Count of Persons Held Pre-trial more than 150 Days on First Day of Month



The number of inmates jailed pre-trial more than 150 days was 72 on October 1, 2011.



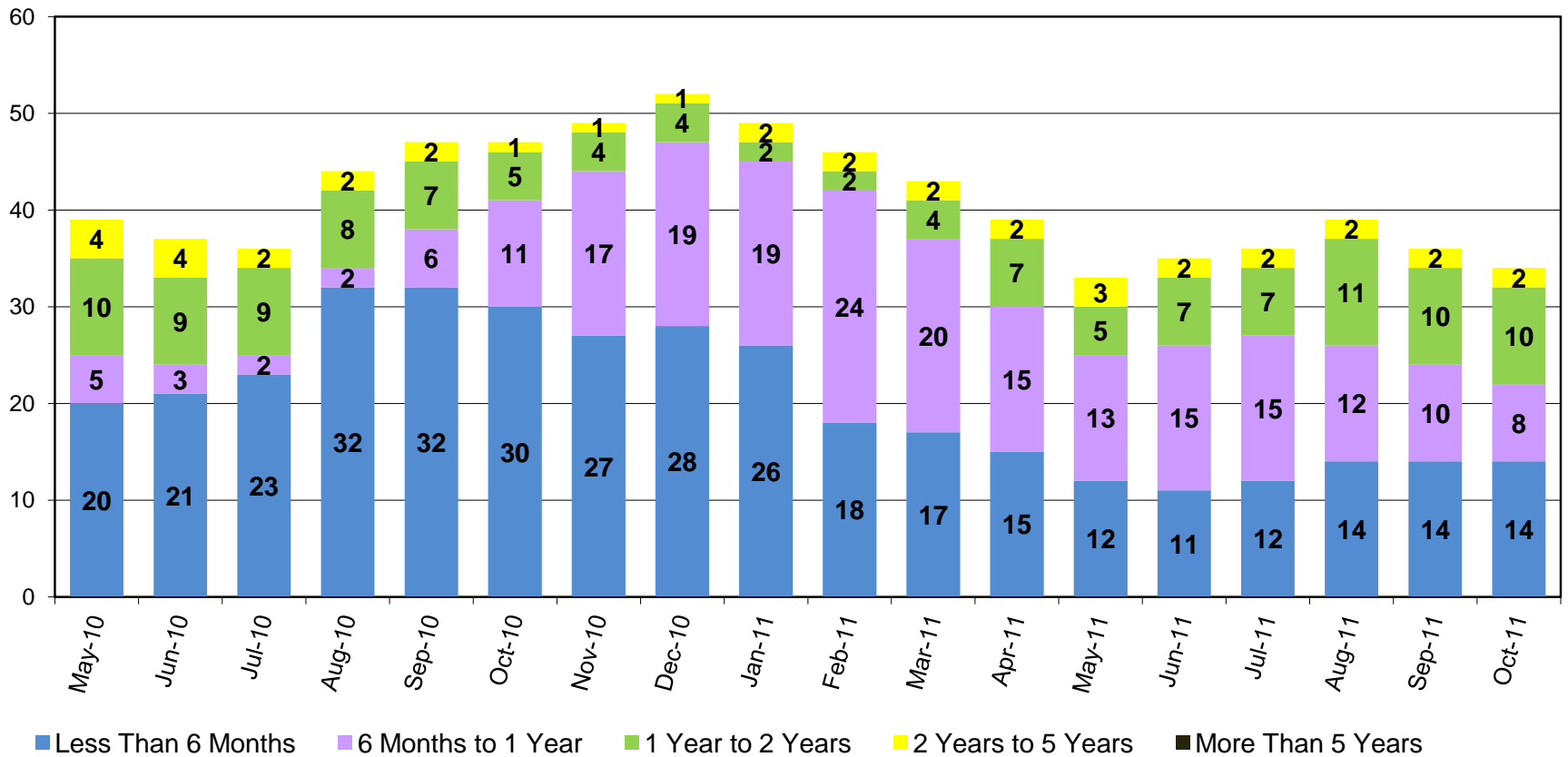
Count of Persons Held Pre-trial on Murder Related Charges on First Day of Month



On October 1, 2011, a total of 34 inmates accused of murder were being held pre-trial.



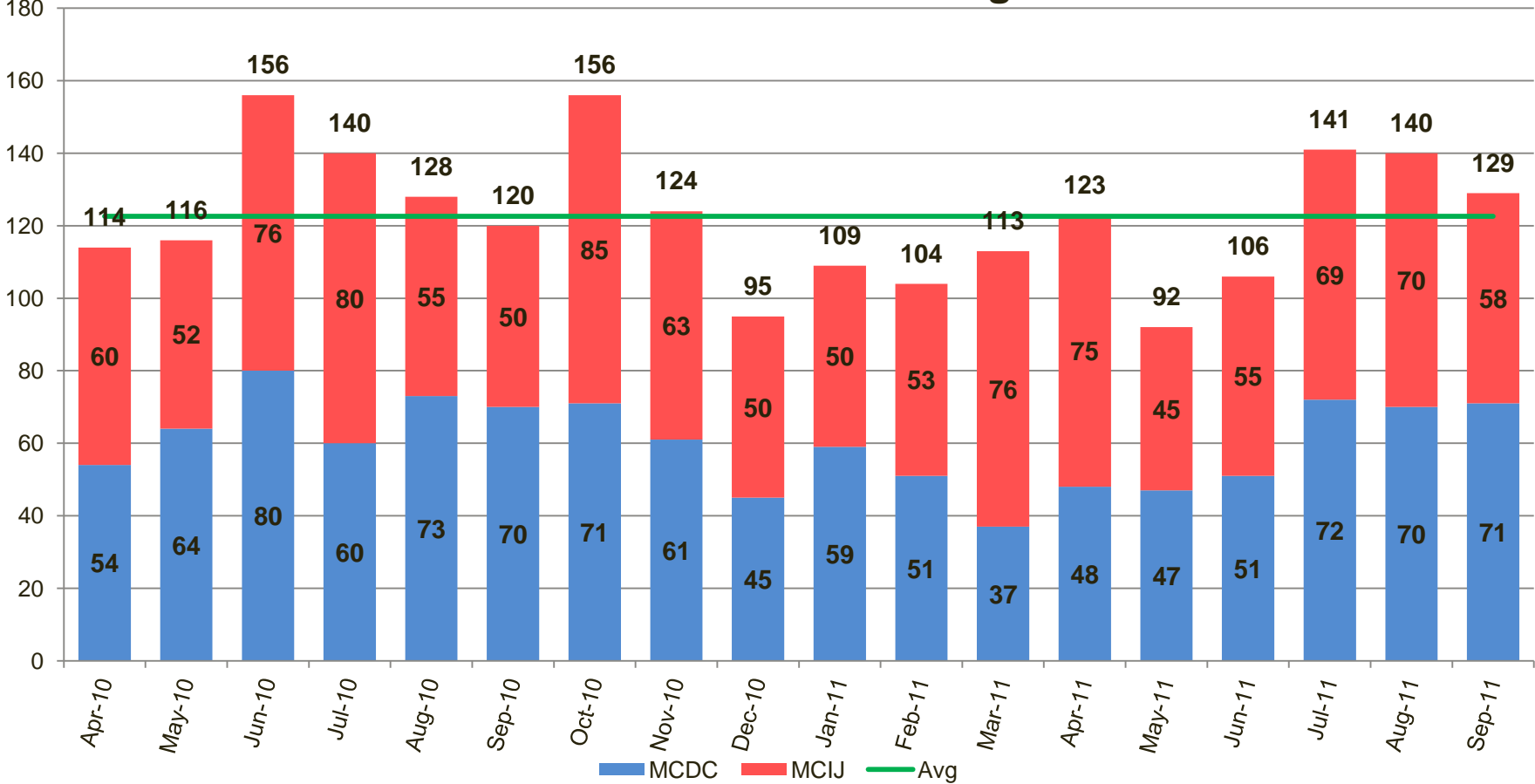
Count of Pre-trial persons with Murder Related Charges by Length of Stay on First Day of Month



As of October 1, 2011, there were twelve inmates accused of murder and held pre-trial in jail for longer than one year.



Jail Misconducts Hearings



Tracking the number of misconduct hearings of inmates informs jail management on classification, housing, and other operational issues.



Special Analysis: Arrestee Drug Abuse Monitoring (ADAM II) Data for April to June 2011

The Arrestee Drug Abuse Monitoring (ADAM) Program is a research program that provides information on the drug use of arrestees. Data is collected through interviews and the drug testing of arrestees in holding facilities.

ADAM data are one source of information on the impact of drugs in the community. Other data sources include crime data, investigative reports, statistics on drug-related deaths, and data on drug purity. Together, these data provide information on the illegal drug problem and aid in the evaluation of programs and policy decisions.

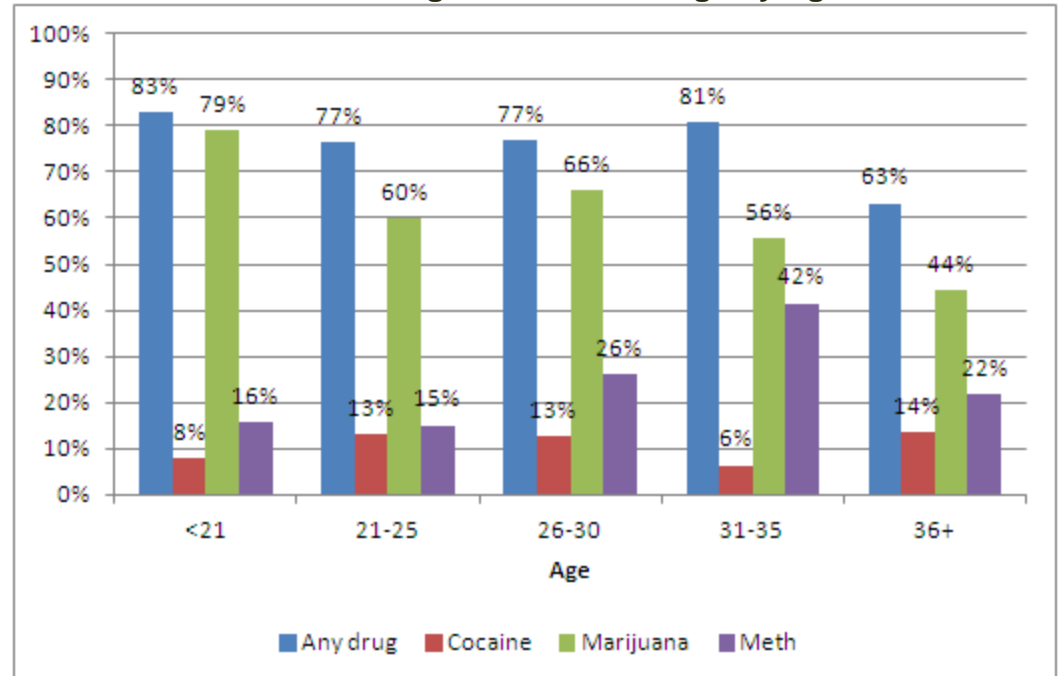
In the ADAM Q1 2011 Report for Multnomah County, which covers April to June 2011, 510 male arrestees were sampled for interview and testing.

During this time, 69% of the arrestees tested positive for any drug. The data indicate that younger arrestees tested positive more frequently than arrestees 36 years and older and that marijuana was the prevalent drug that tested positive in all age groups.

Looking at offense categories, 59% of arrestees for violent crime and 79% of arrestees for property crime tested positive for any drug. Over 95% of arrestees for drug possession tested positive for any drug.

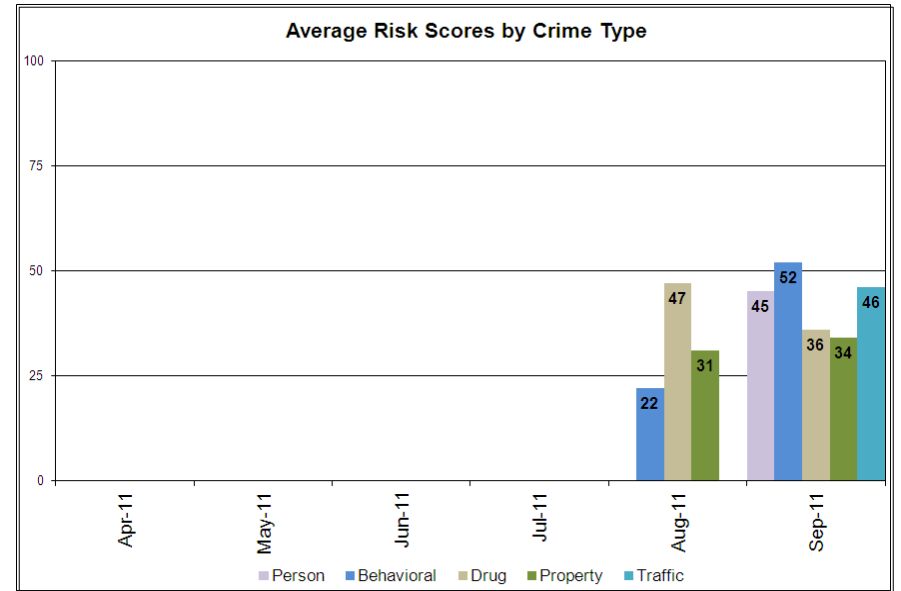
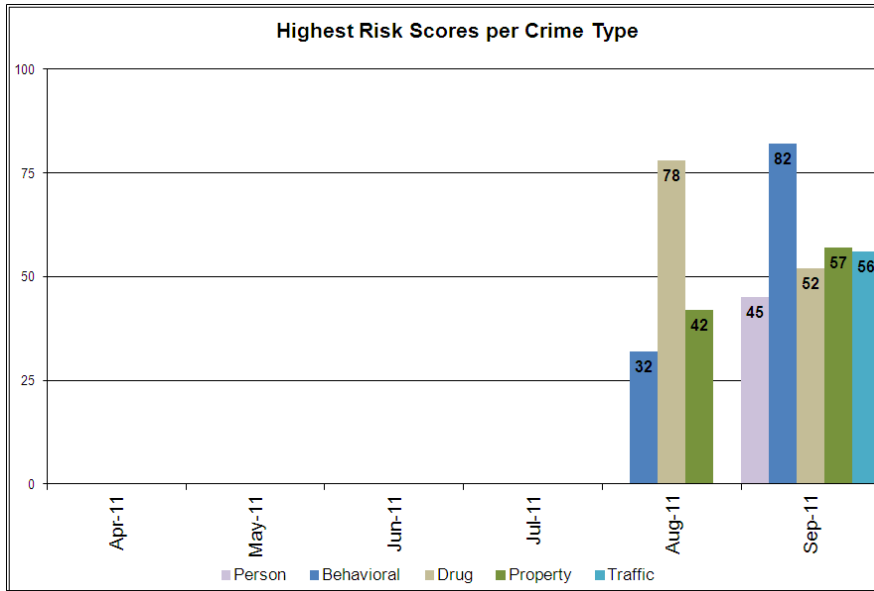
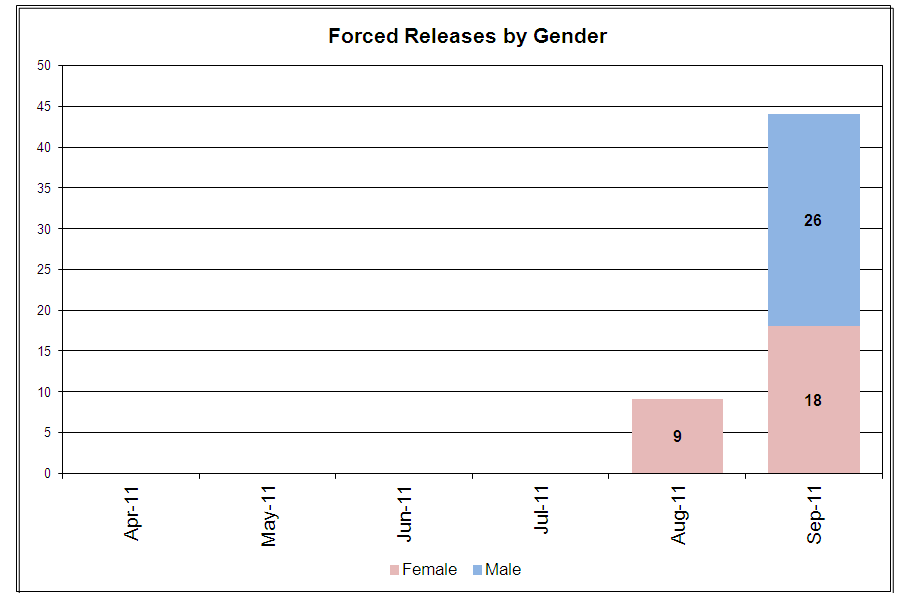
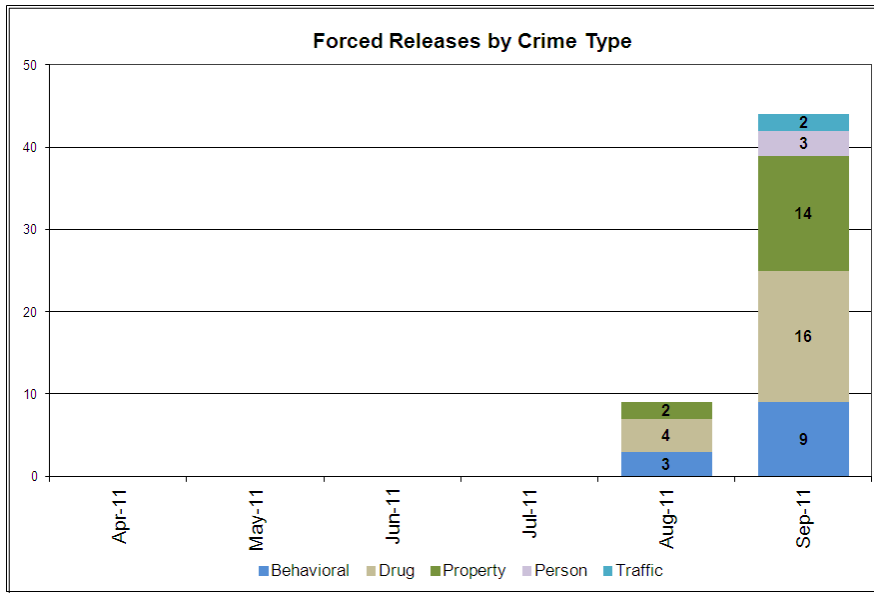
For additional information on ADAM, please contact the Resource Analysis Unit.

Percent of Arrestees Testing Positive for Drugs by Age



Emergency Population Release Appendix: Detailed Info on Monthly Forced Releases





There were 44 forced releases in September 2011.