

# **MULTNOMAH COUNTY SHERIFF'S OFFICE**

## **Monthly Jail Report, November 2011**



*Multnomah County Sheriff's Office - Dan Staton, Sheriff*  
*501 SE Hawthorne Blvd., Suite 350 Portland OR 97214*  
*503-988-4300 (TTY 503-988-4500) [www.mcso.us/public/](http://www.mcso.us/public/)*

# ***Welcome to the Multnomah County Sheriff's Office Monthly Jail Report!***

This report is a monthly publication of MCSO's Planning and Research Unit. We appreciate any suggestions or feedback you may have. Please feel free to contact any one of us in the unit:

David Braaksma  
Markley Drake  
Wendy Lin-Kelly  
Shea Marshman

503-988-4300

## ***November Summary (and reference page):***

Standard bookings: 2438 (p. 3)

Average Length of Stay: 13.38 days (p. 8)

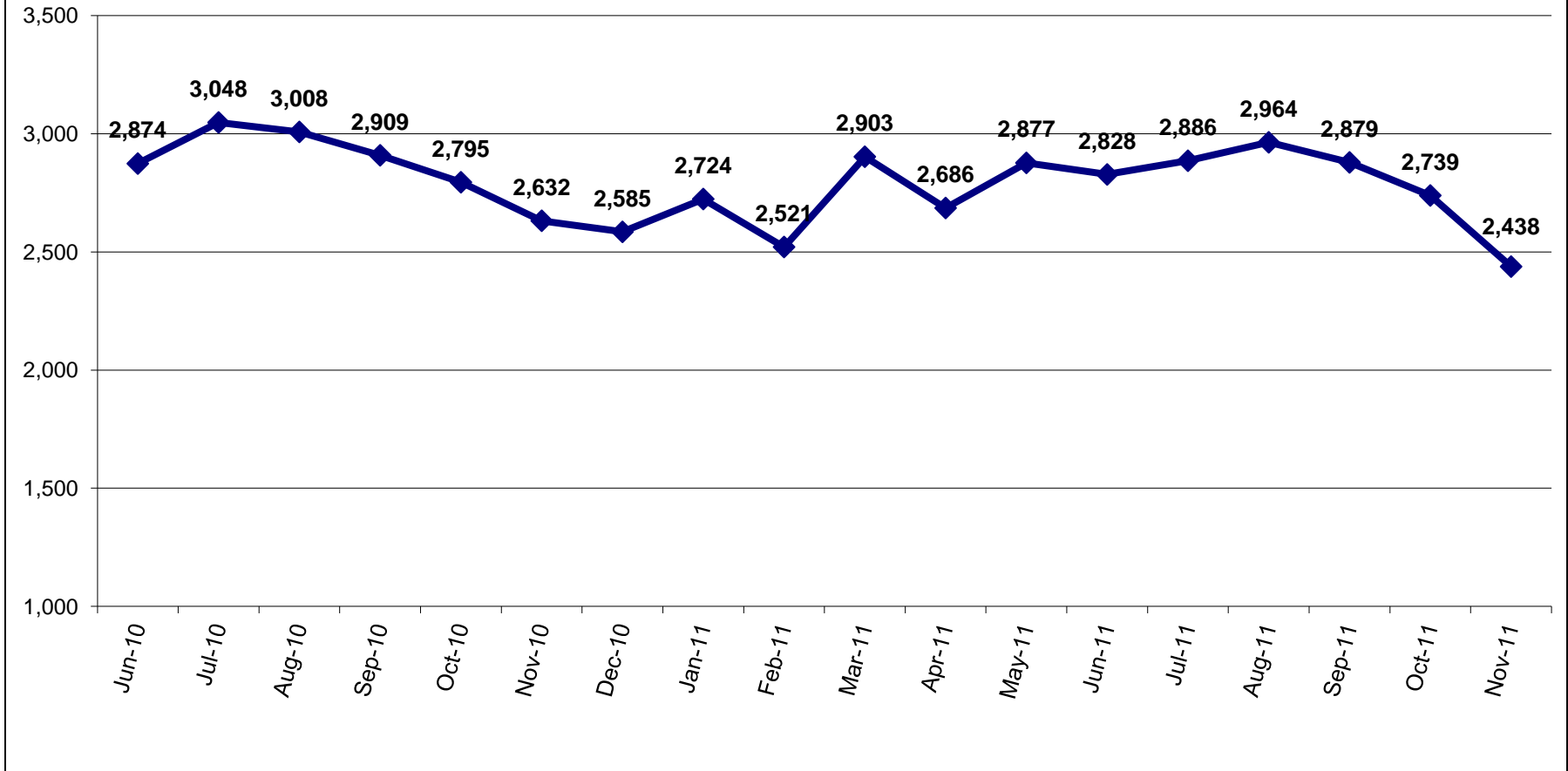
Capacity: 1310 beds (p. 10)

Average Daily Population: 1157, 88% of capacity (p. 10)

Forced Releases (Emergency Population Releases): 0 (p. 14)



# Standard Bookings

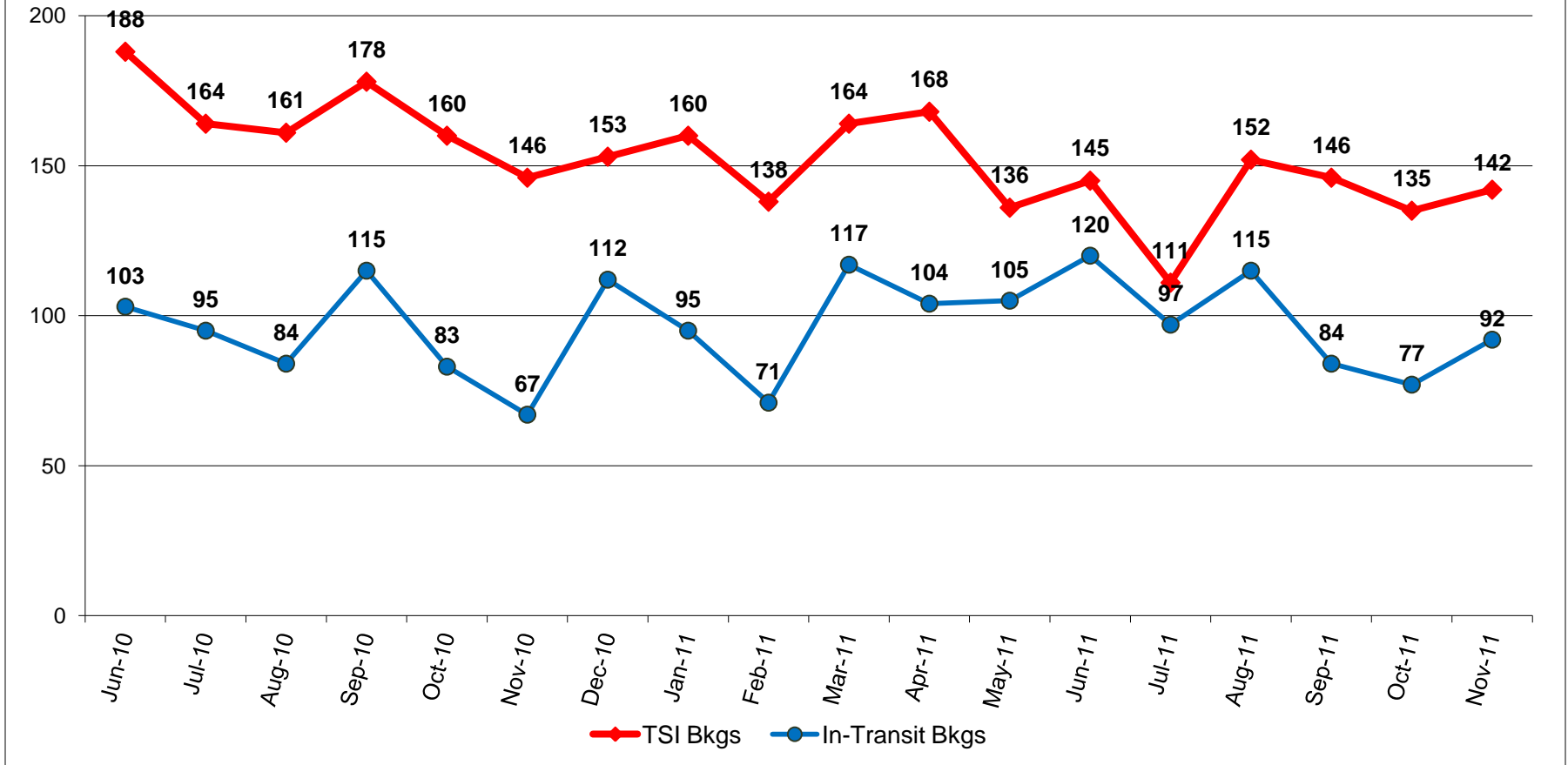


Standard bookings totaled 2438 in November 2011, averaging 81 bookings per day.



*Exemplary Service for a Safe, Livable Community*

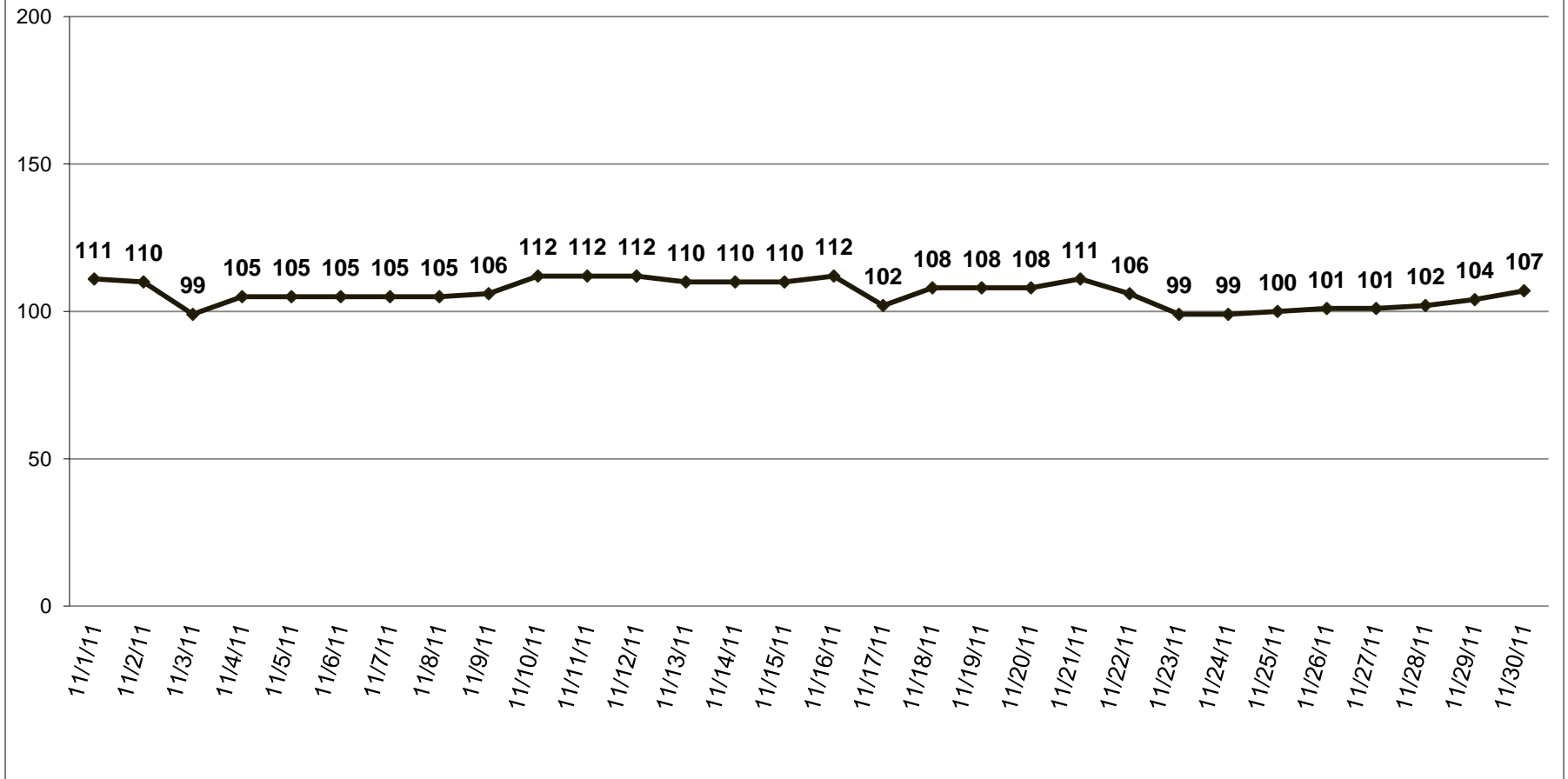
## Turn-Self In and In-Transit Bookings



Turn-Self In (TSI) bookings are where an offender has been sentenced and ordered to return to jail at a later date. In-Transit bookings are of those being held for other jurisdictions while being transported. The number of TSI bookings and In-Transit bookings both increased between October and November.



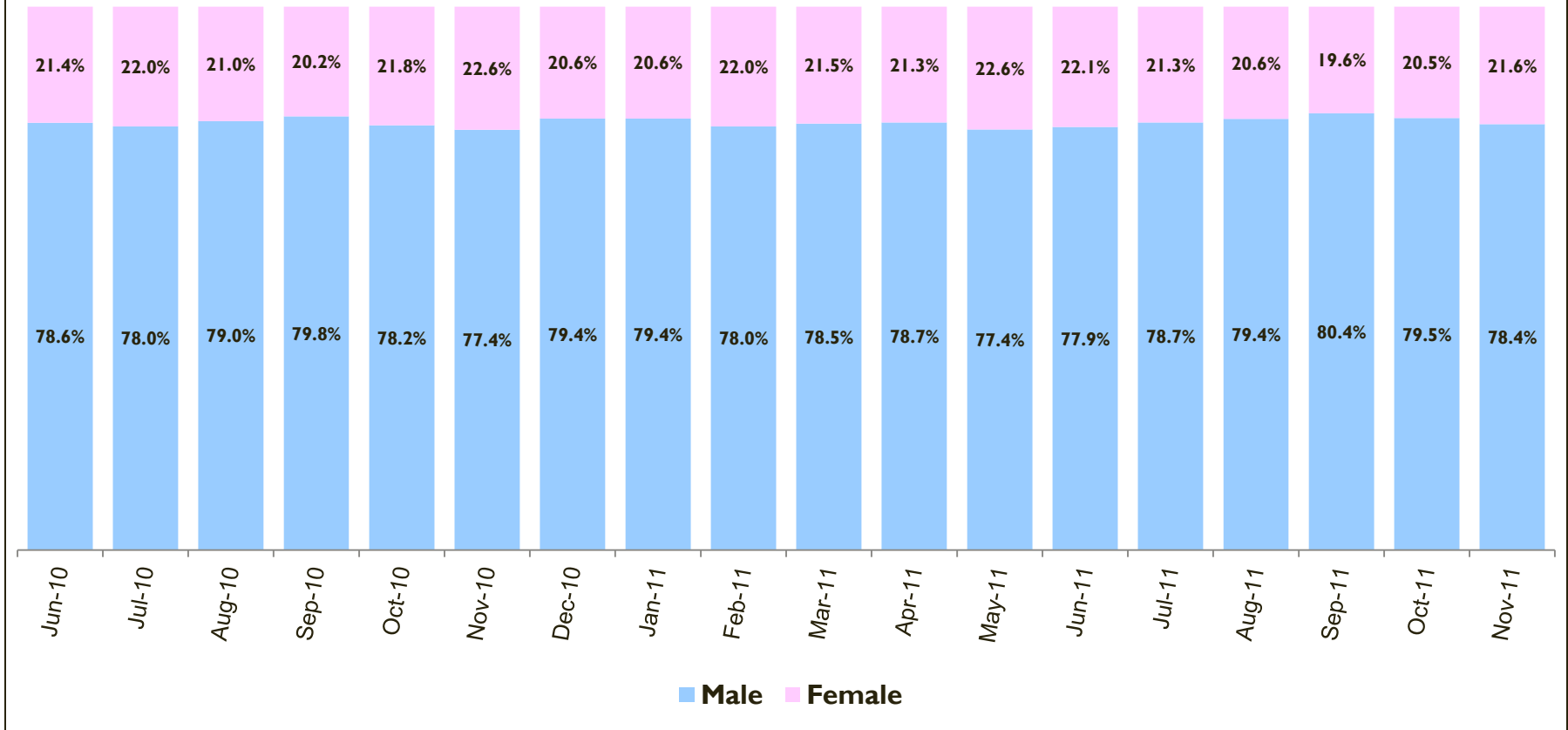
## Daily Count of Exclusive U.S. Marshal Inmates



US Marshal inmates averaged 106 per day in November 2011. As US Marshal inmate counts per day may change over time, these data are as of December 2, 2011.



# Gender Composition of Bookings

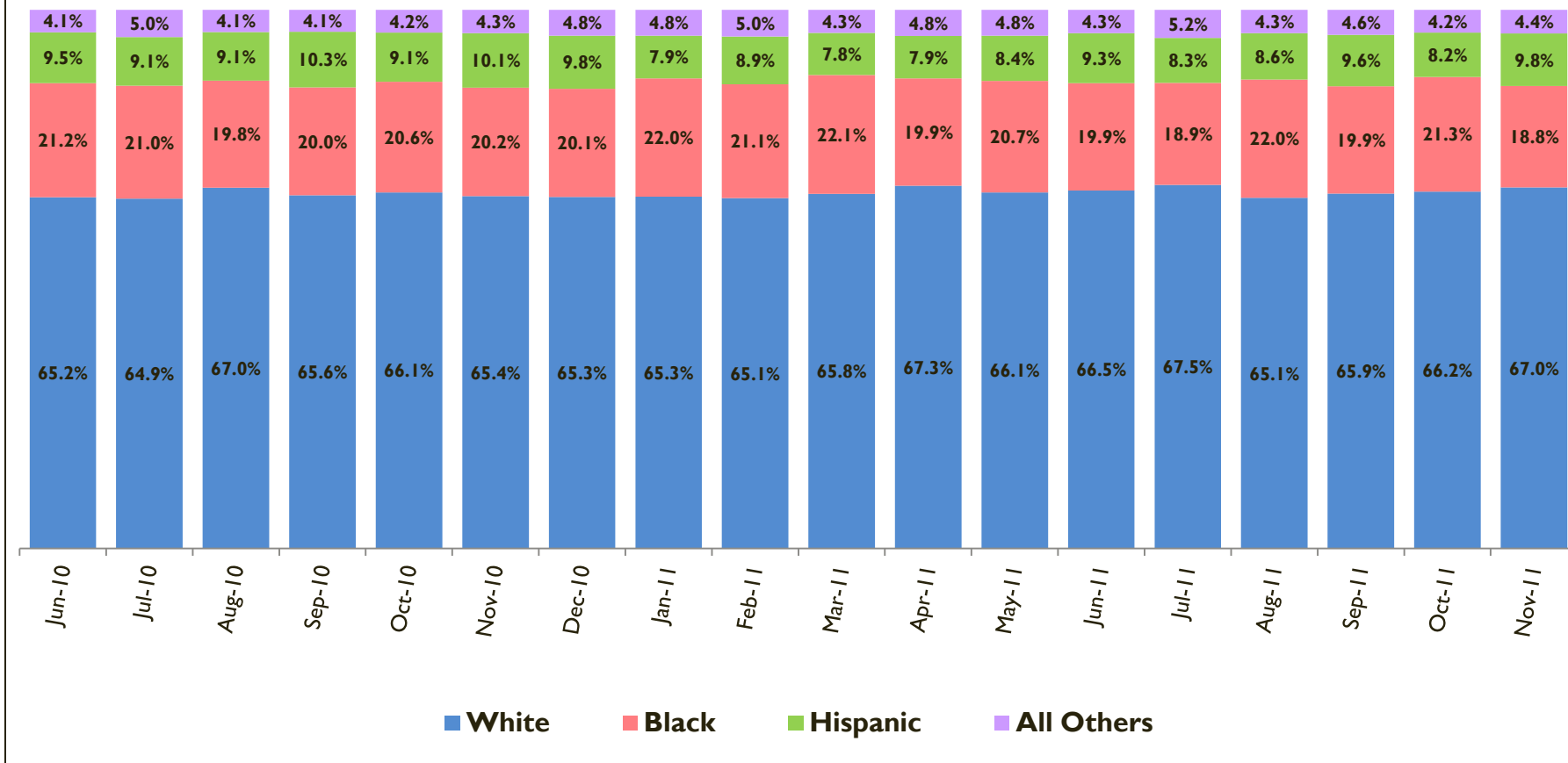


\*Includes standard and TSI bookings.

The percent of females and males booked is typically between 18 - 23% and 77 - 82%, respectively.



## Ethnic Composition of Bookings

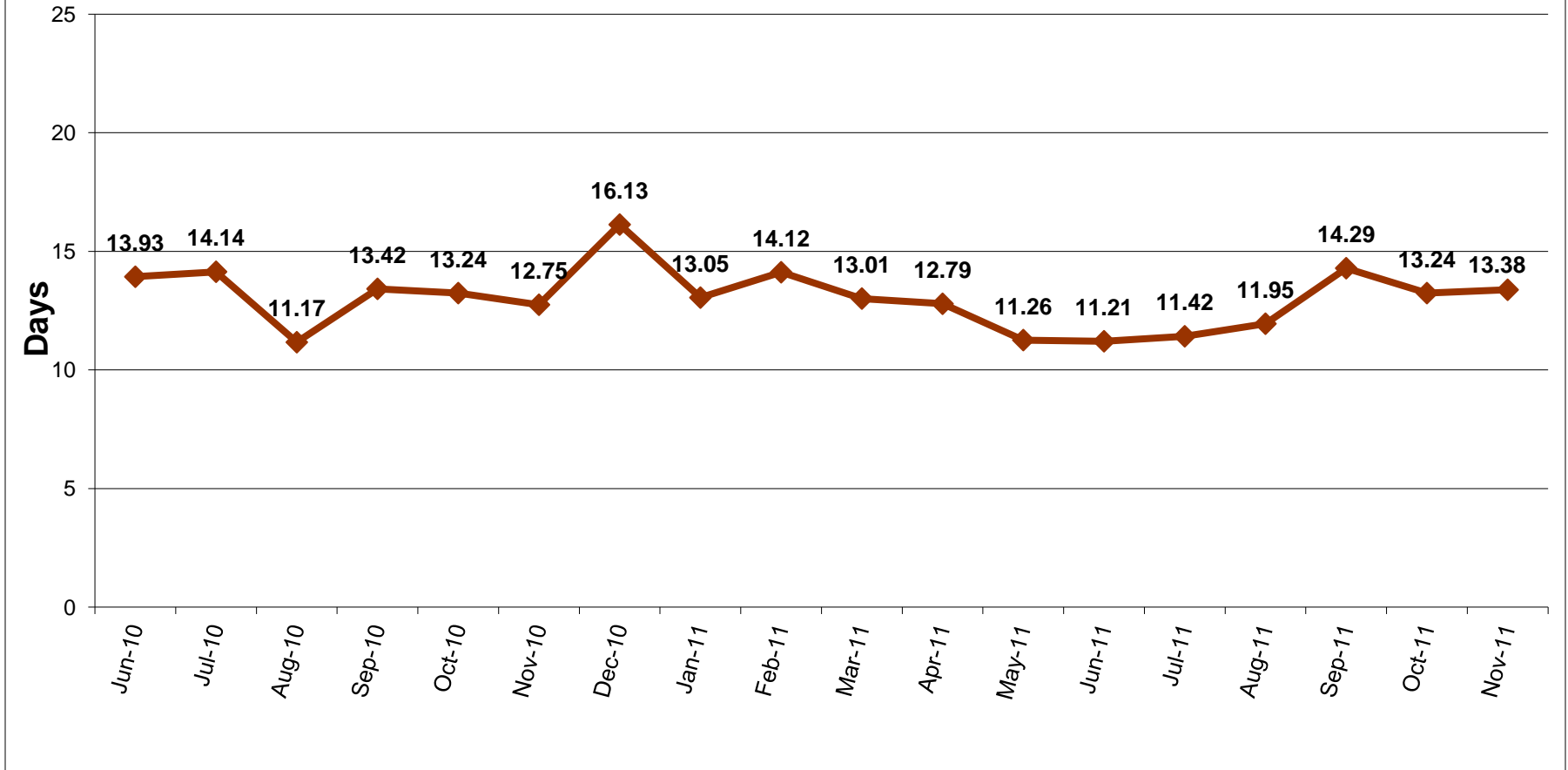


\*Includes standard and TSI bookings.

The ethnic composition of bookings is relatively stable month to month. Approximately two-thirds of those booked are White.



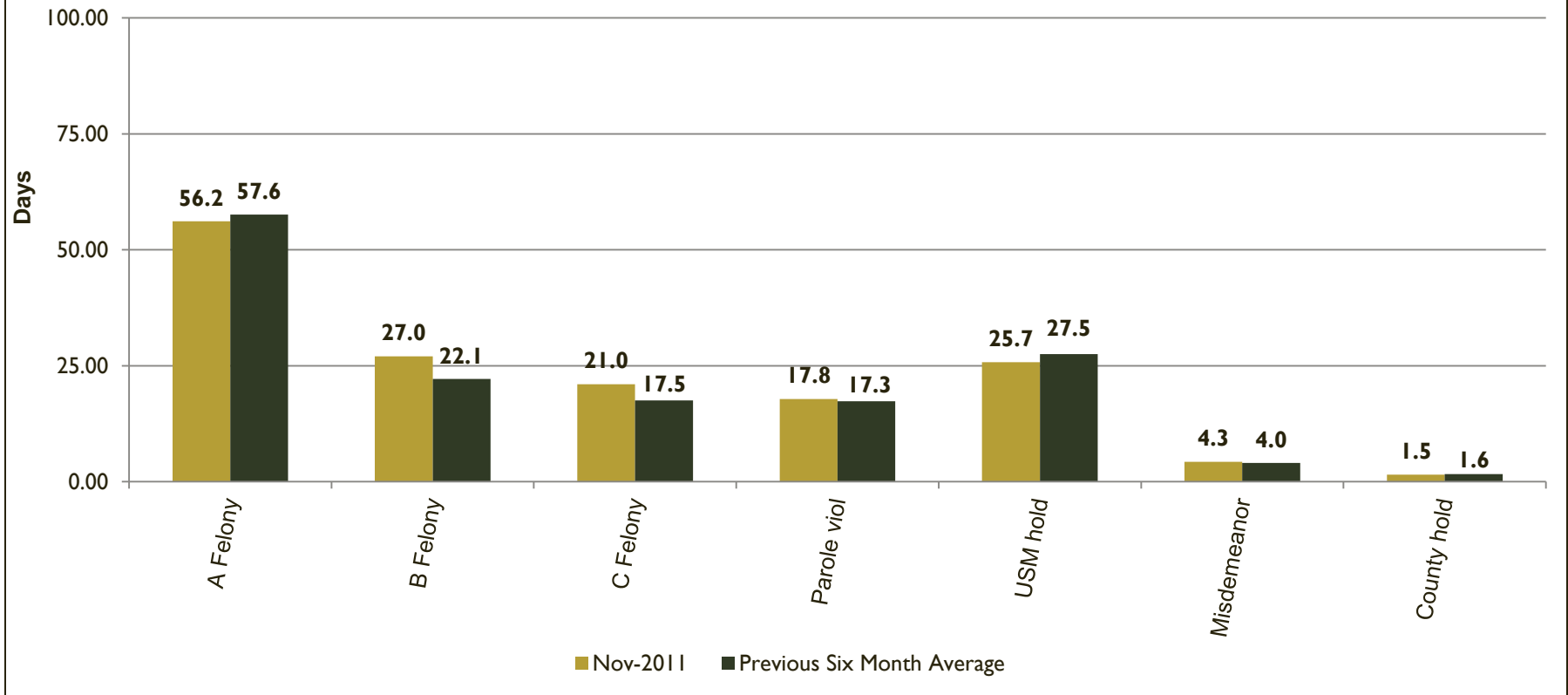
## Average Length of Stay (in days)



The average length of stay was 13.38 days for inmates released in November.



## Average Length of Stay by Charge Priority (for inmates released during the month)

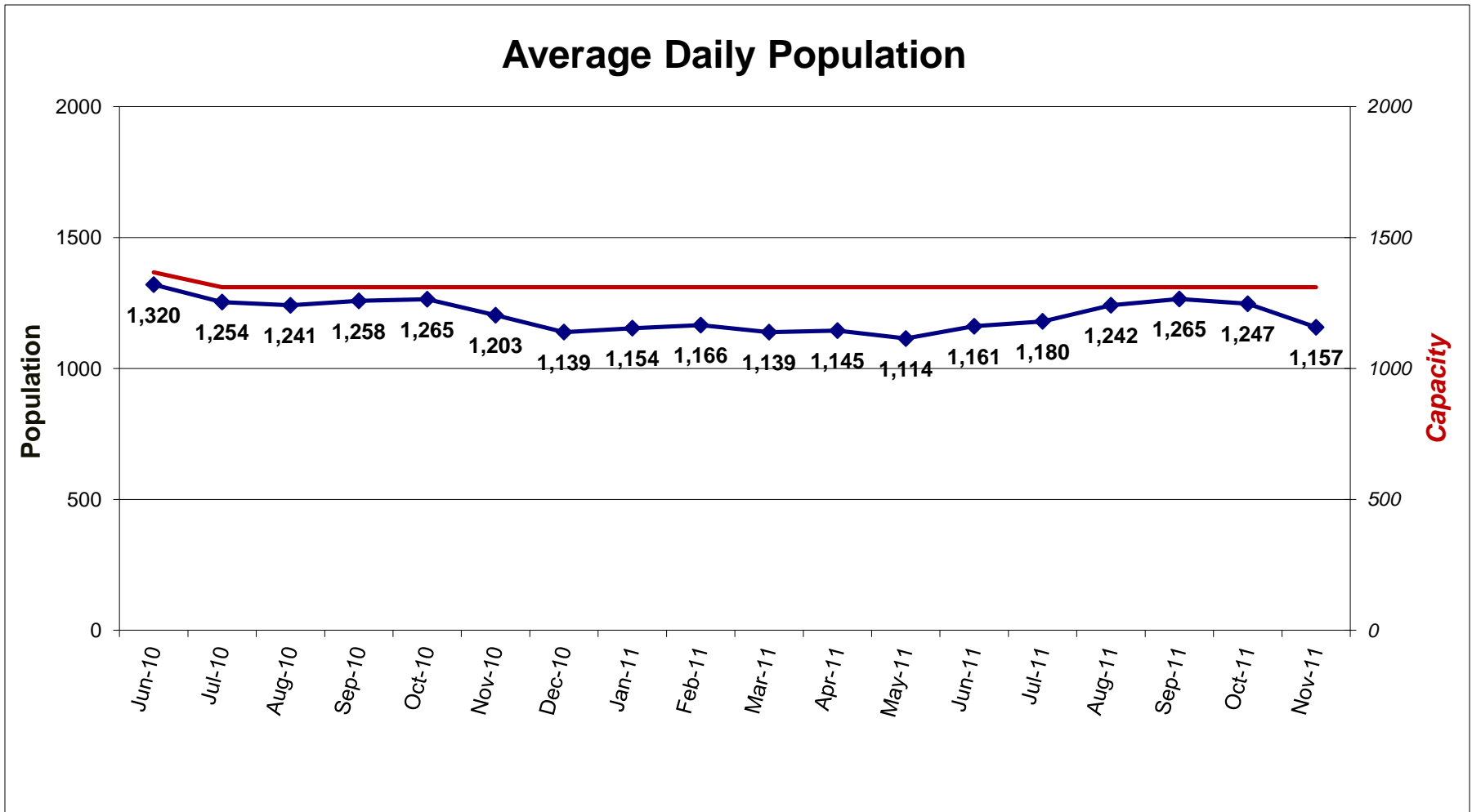


\*Data based on primary or most serious charge, regardless of status of the case.

The average lengths of stay for various charges were similar in November 2011 to the six month average from May to October. Previous monthly reports included data on “Traffic.” Due to a programming glitch which miscoded older DUIL warrants, this charge was removed from the chart. Over the past 10 months, this affected only 20 releases or less per month.



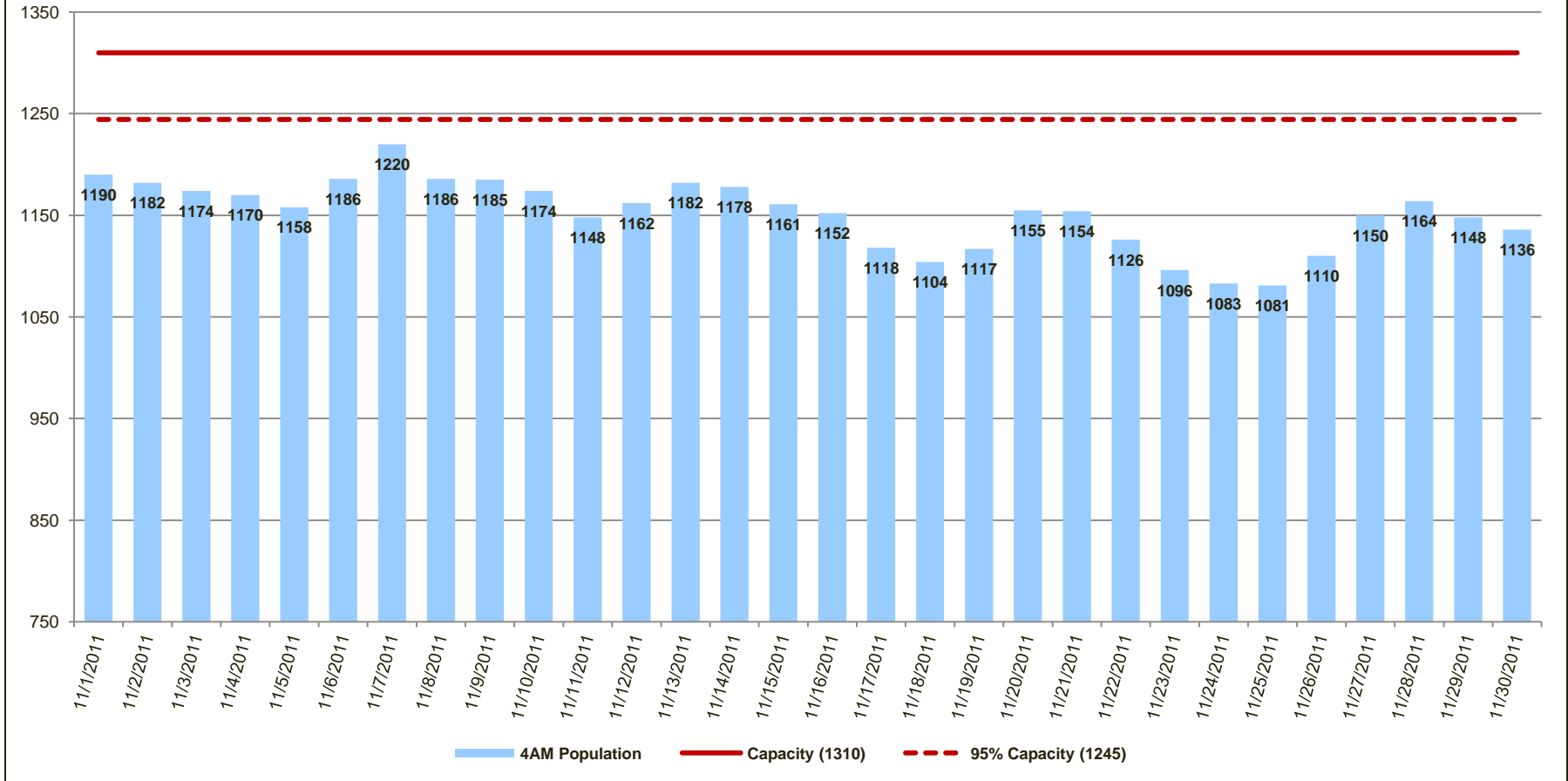
## Average Daily Population



On July 1, 2010, the capacity of Multnomah County's two jail facilities was reduced from 1367 to 1310. The average daily population in November 2011 was 1157, which is 88.3% of capacity.



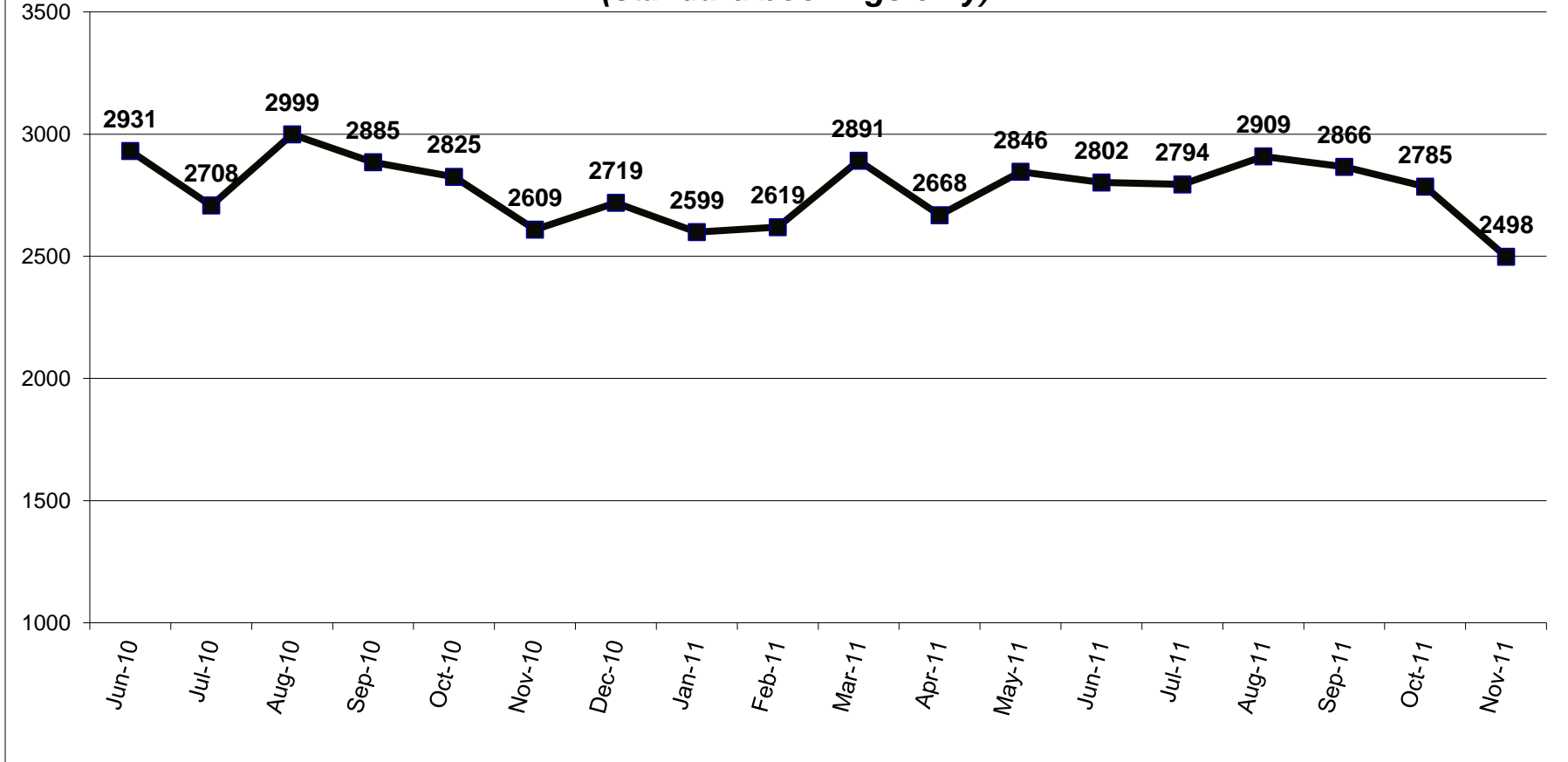
# Daily Population



The daily population was not above 95% of budgeted capacity in the month of November.



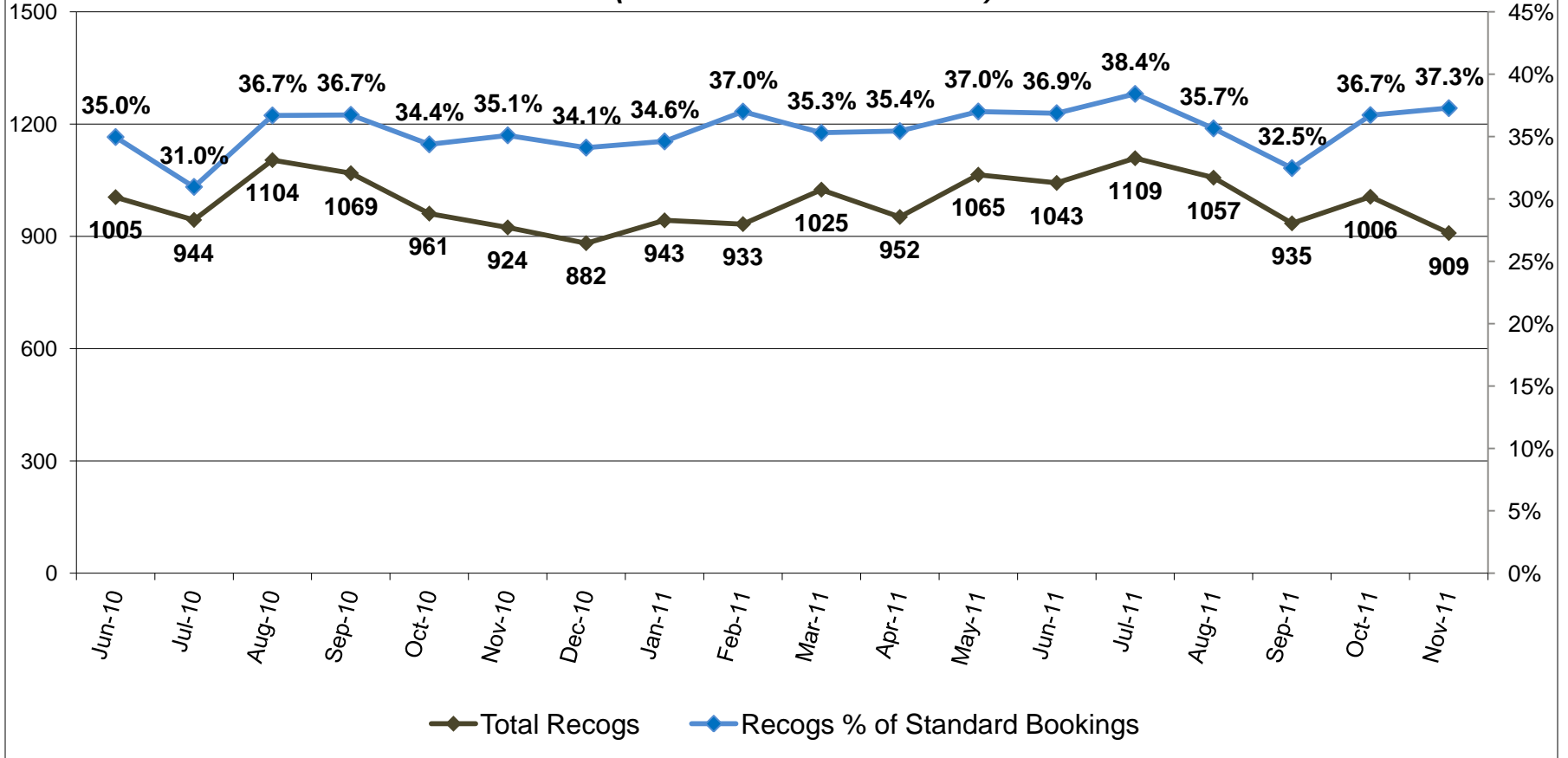
## Total Releases (standard bookings only)



Releases per day among standard bookings decreased between October and November, averaging 90 per day in October and 83 per day in November.



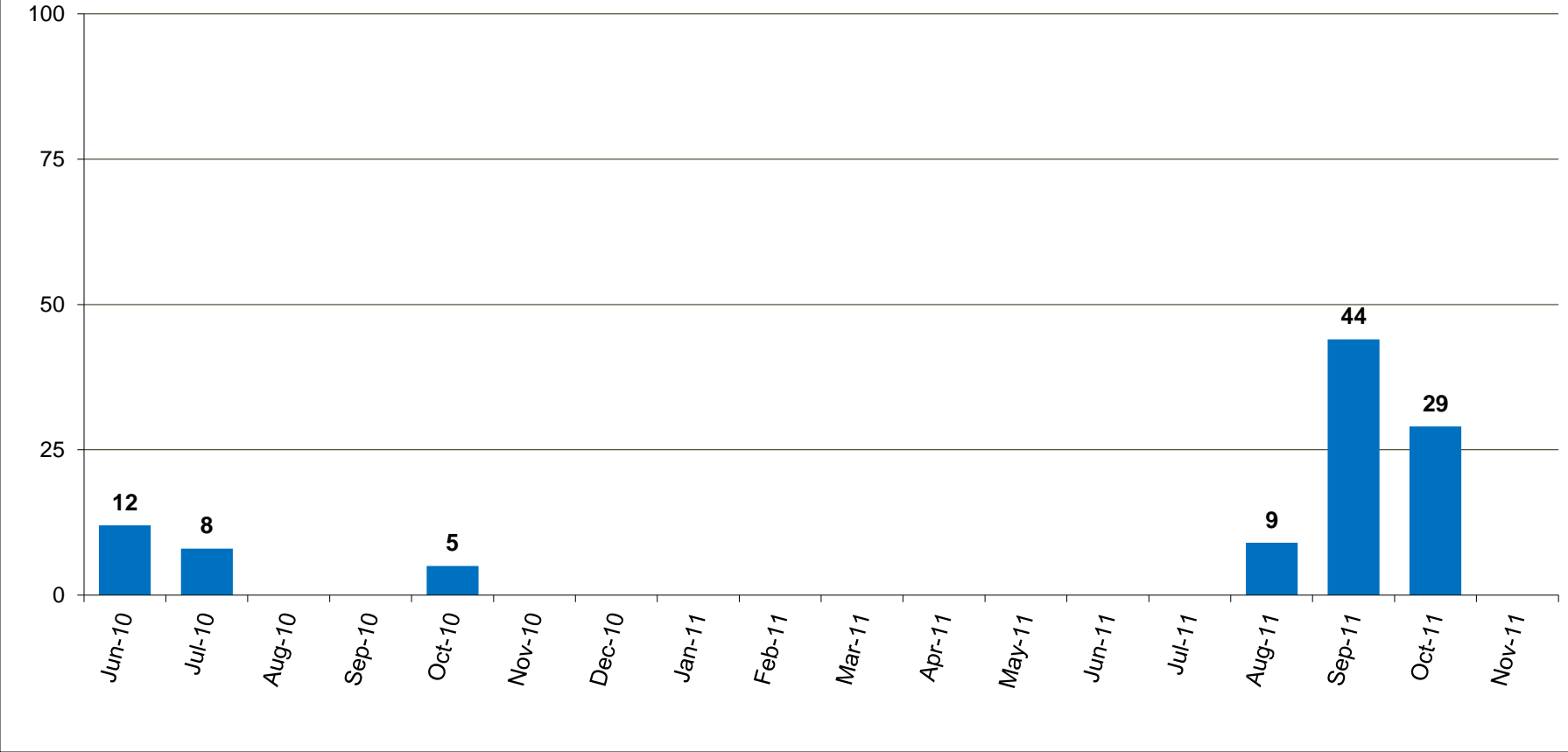
## Recognizance Releases (subset of total releases)



Recognizance releases averaged 30 per day in November. The percentage of recognizance releases to standard bookings increased slightly between October and November.



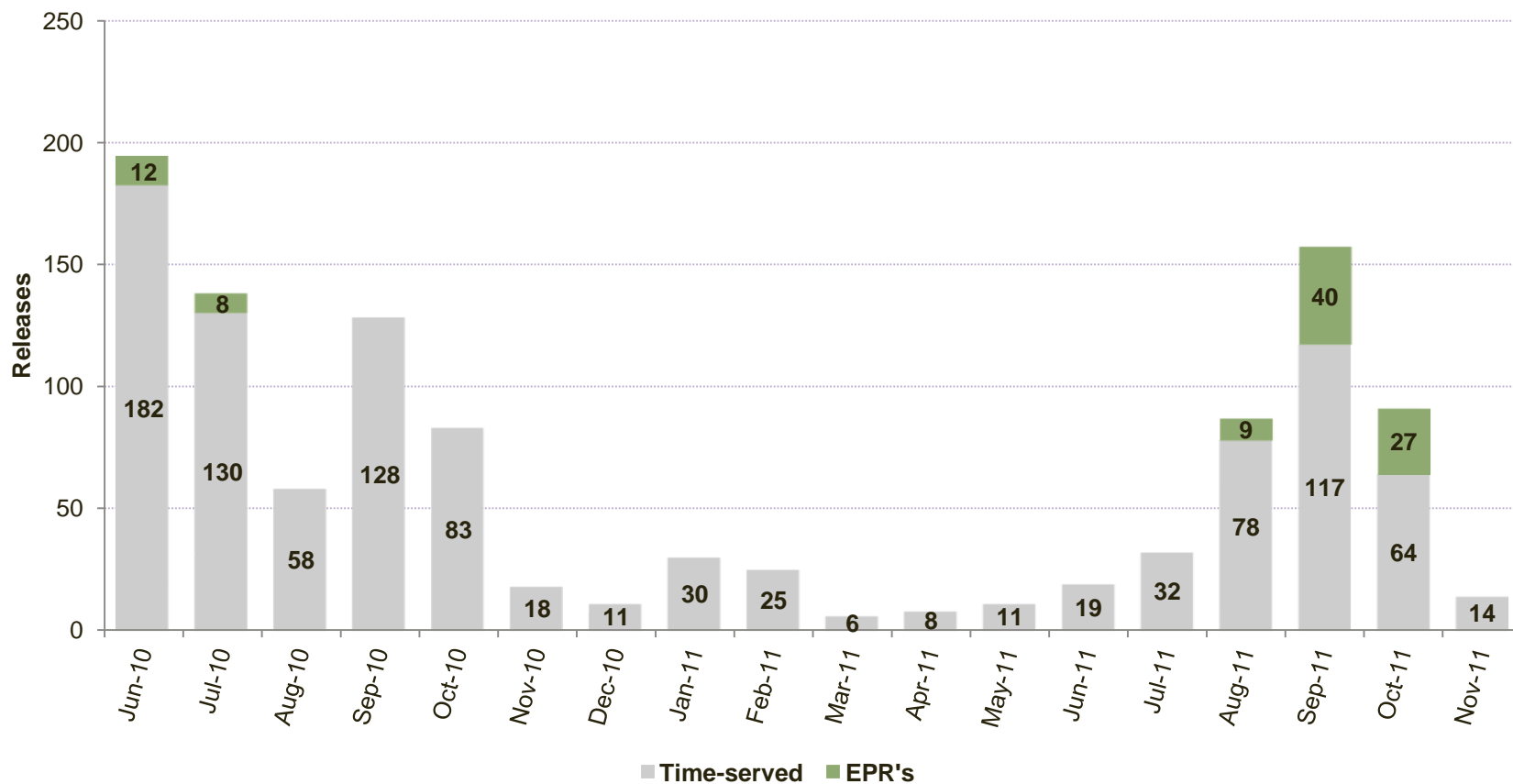
# Forced Releases (EPRs)



\*Forced releases may occur per Multnomah County Board Resolution 04-135 as part of the jail capacity management plan. There were no forced releases in November 2011.



### Releases between 12 AM and 8 AM\*

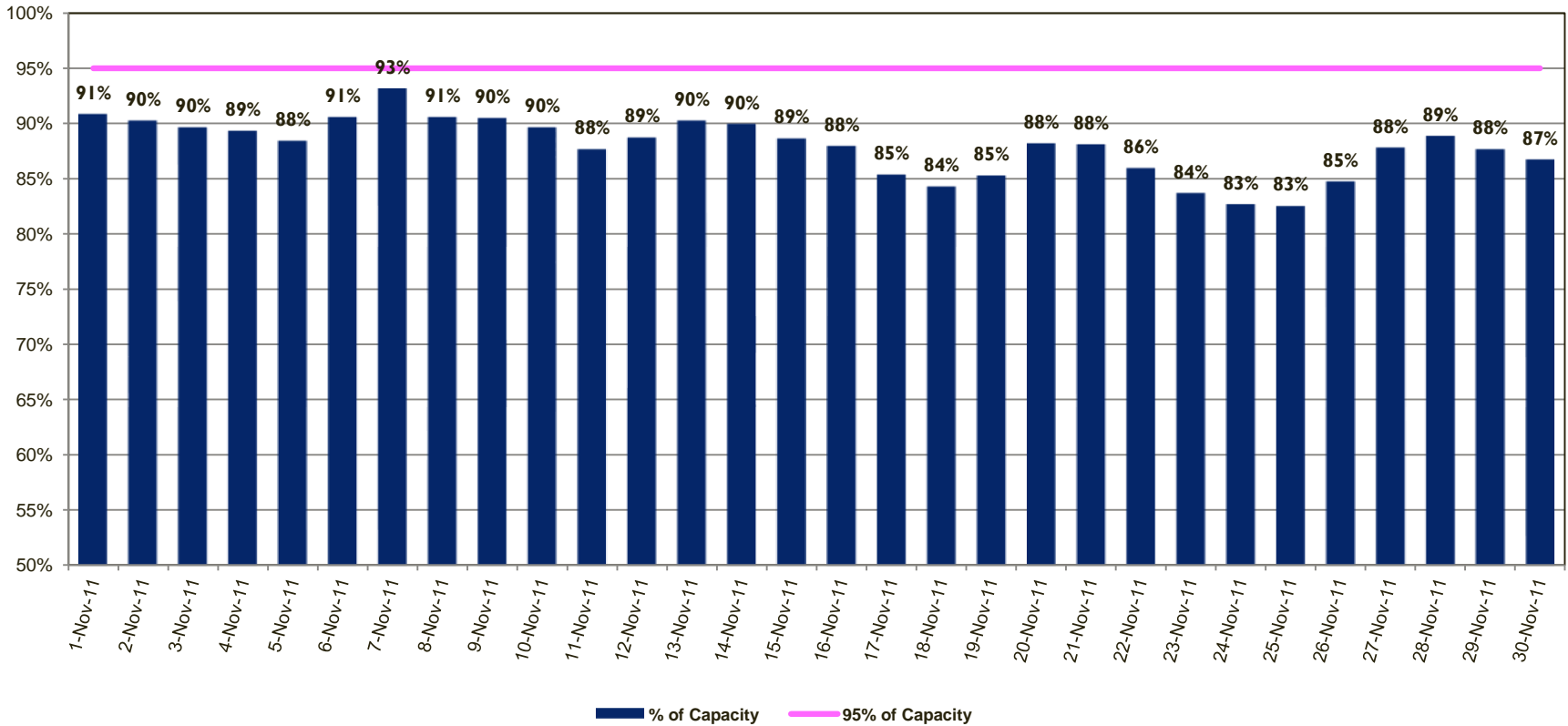


\*Non-discretionary court-ordered and recognizance releases are not included.

In November 2011, 14 time-served inmates were released from jail between the hours of 12AM and 8AM.



### Percentage of Capacity by Day\*

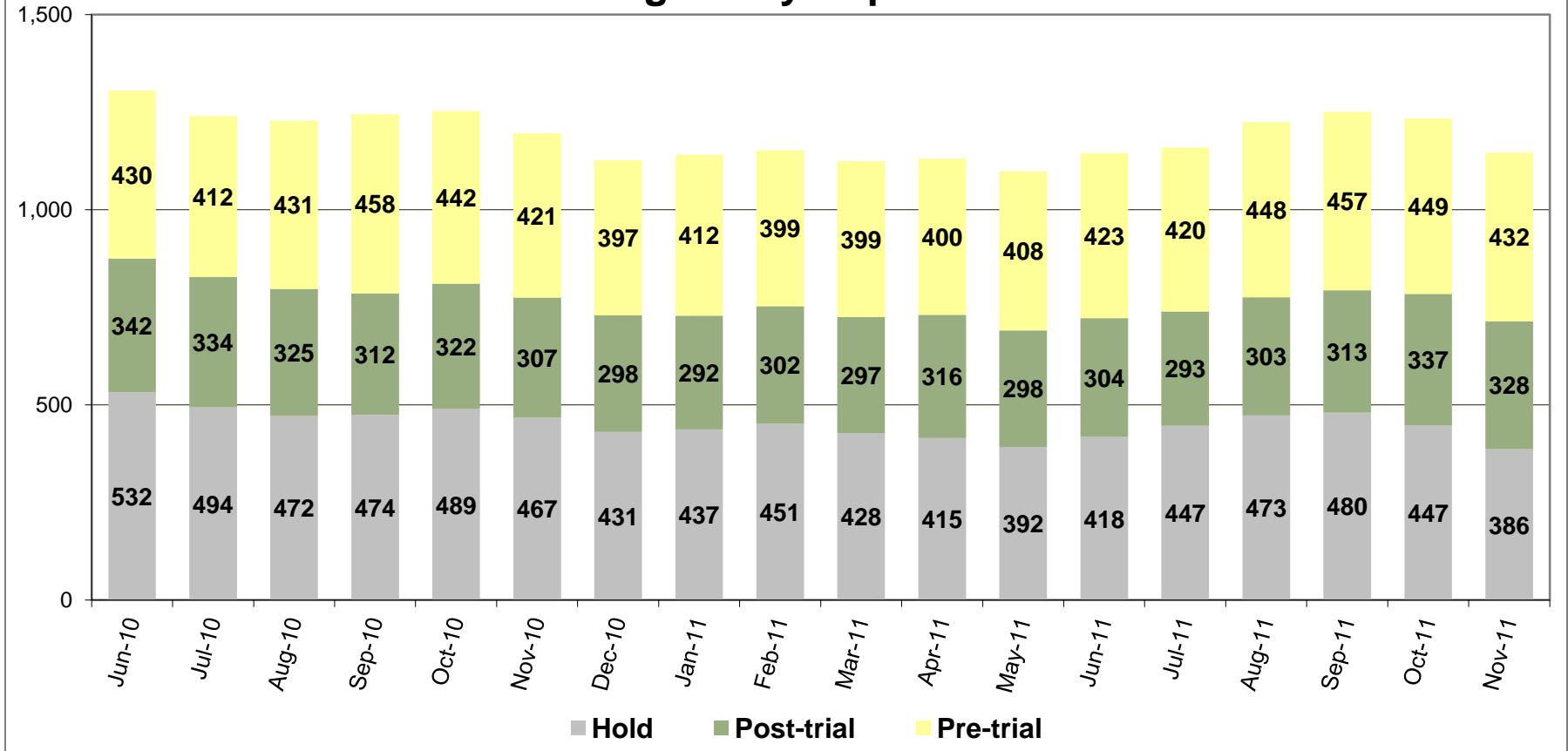


\*Red bars indicate days on which EPRs occurred, if any. EPRs do not always or only occur when capacity exceeds the 95% threshold. Efforts are made to balance the population to the demands of the classification system for specific types of jail beds and balance the space needs for male or female inmates. Additionally, jail capacity varies throughout the day. These capacity calculations are based on 4 AM population counts.

On September 23, 2010, the Multnomah County Board of Commissioners adopted Resolution No. 2010-141 whereby if the number of inmates housed within the Multnomah County jail system reaches 95% of the population limit, a county jail population emergency will exist.



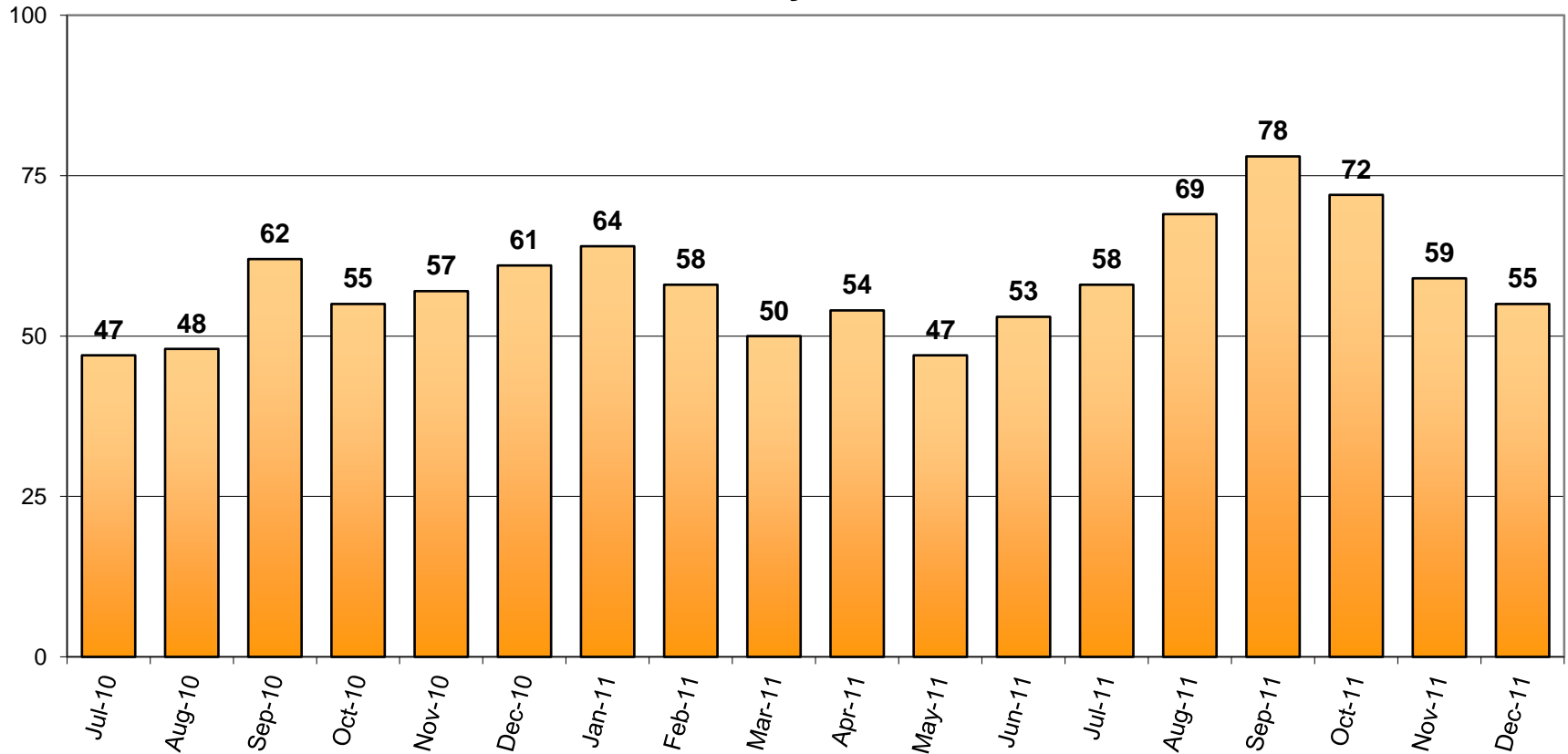
## Pre-Trial vs. Post-Trial vs. Holds in Custody Average Daily Population



The average number of inmates jailed on holds, pre-trial, and post-trial all decreased between October and November.



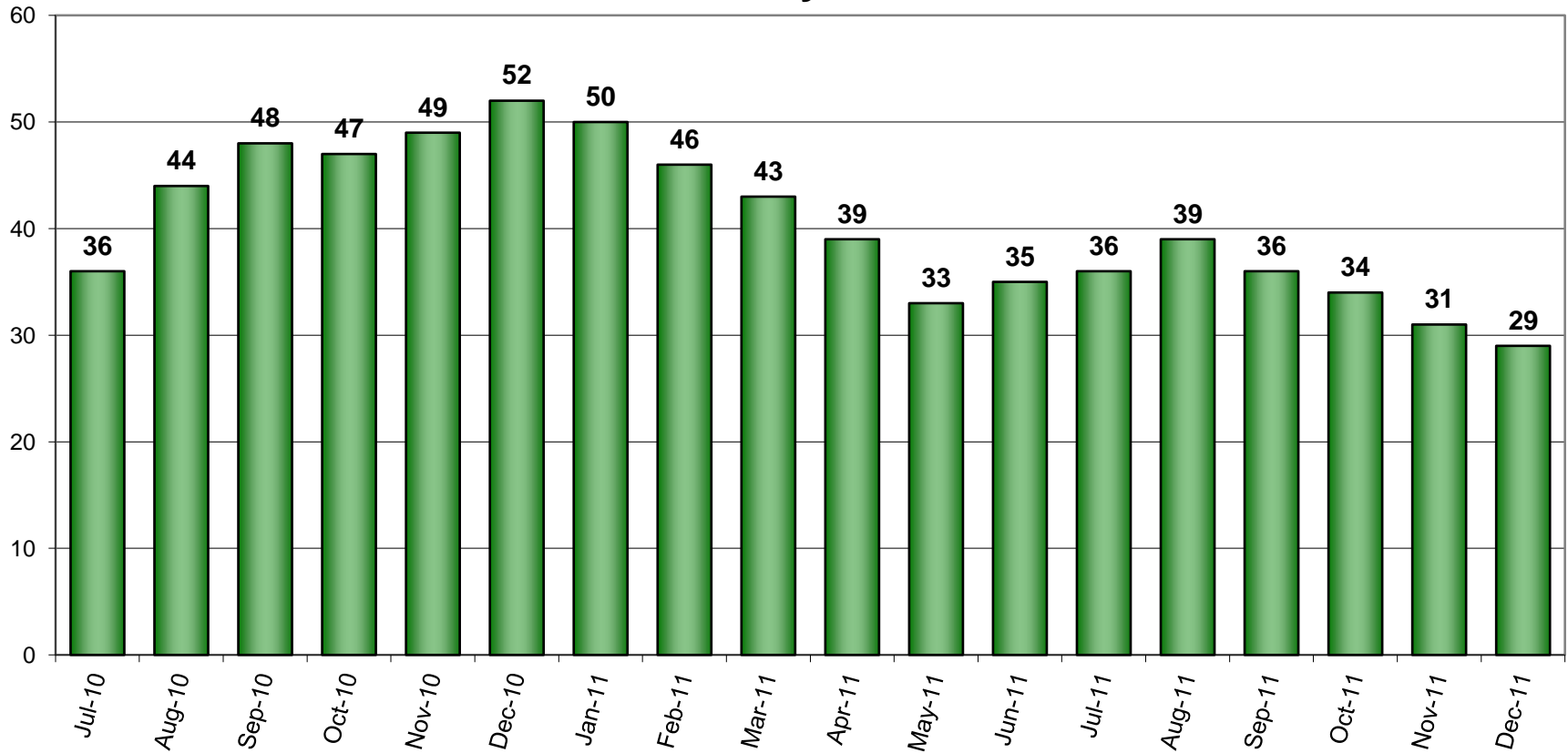
## Count of Persons Held Pre-trial more than 150 Days on First Day of Month



The number of inmates jailed pre-trial more than 150 days was 55 on December 1, 2011.



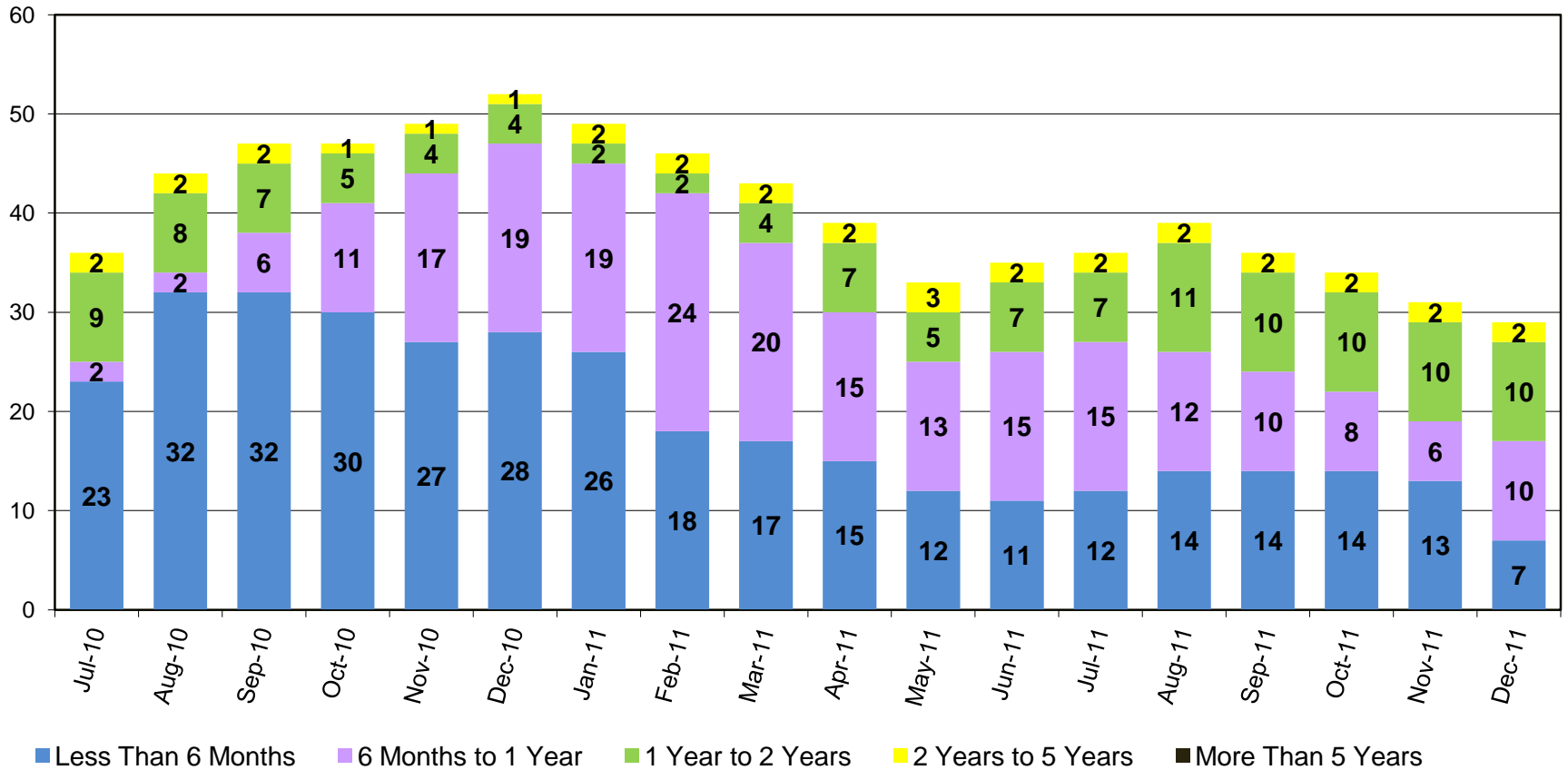
## Count of Persons Held Pre-trial on Murder Related Charges on First Day of Month



On December 1, 2011, a total of 29 inmates accused of murder were being held pre-trial.



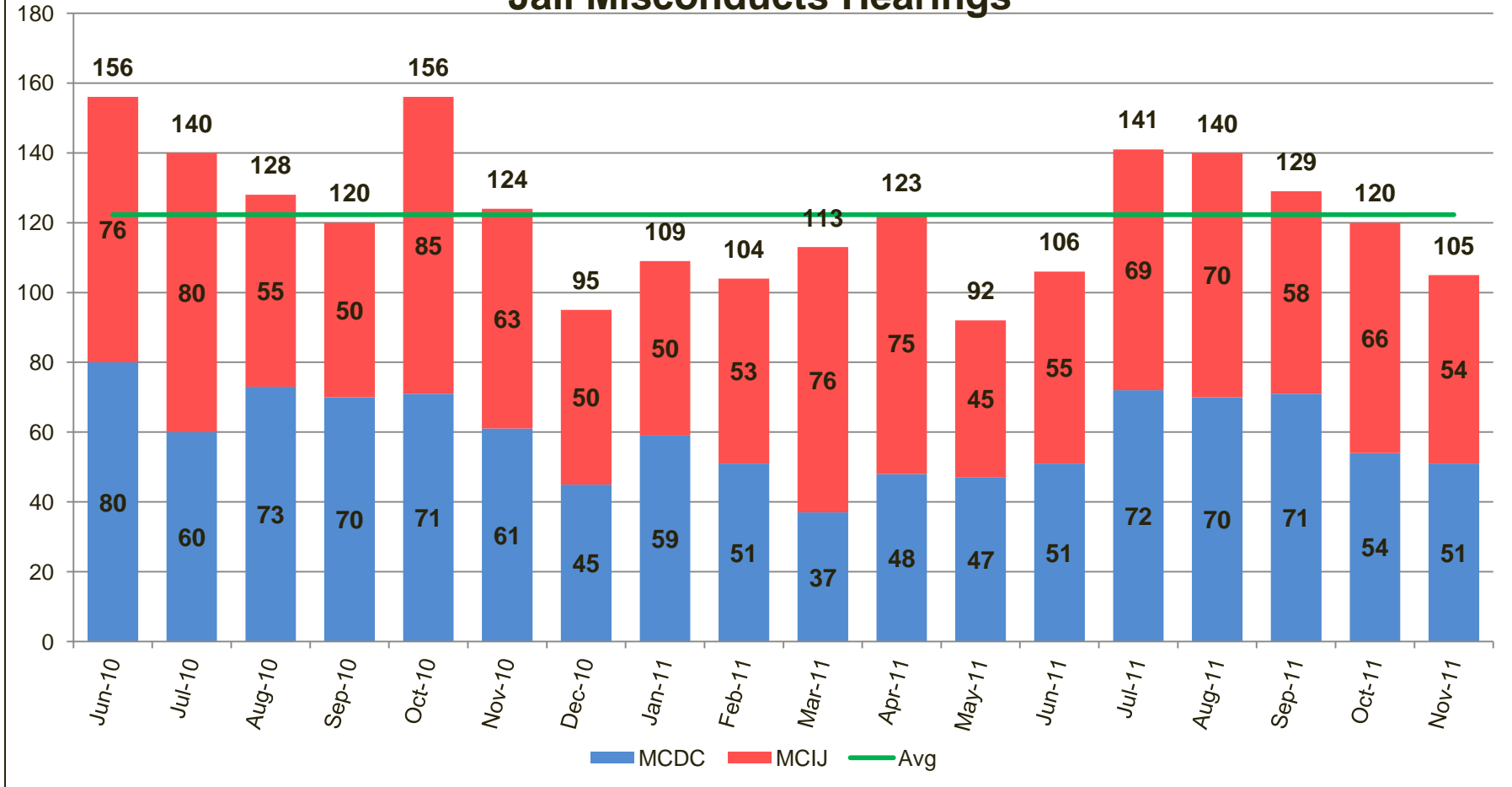
## Count of Pre-trial Persons with Murder Related Charges by Length of Stay on First Day of Month



As of November 1, 2011, there were twelve inmates accused of murder and held pre-trial in jail for longer than one year.



# Jail Misconducts Hearings



Tracking the number of misconduct hearings of inmates informs jail management about classification, housing, and other operational issues.



## Special Analysis: Frequently Booked Persons in 2010

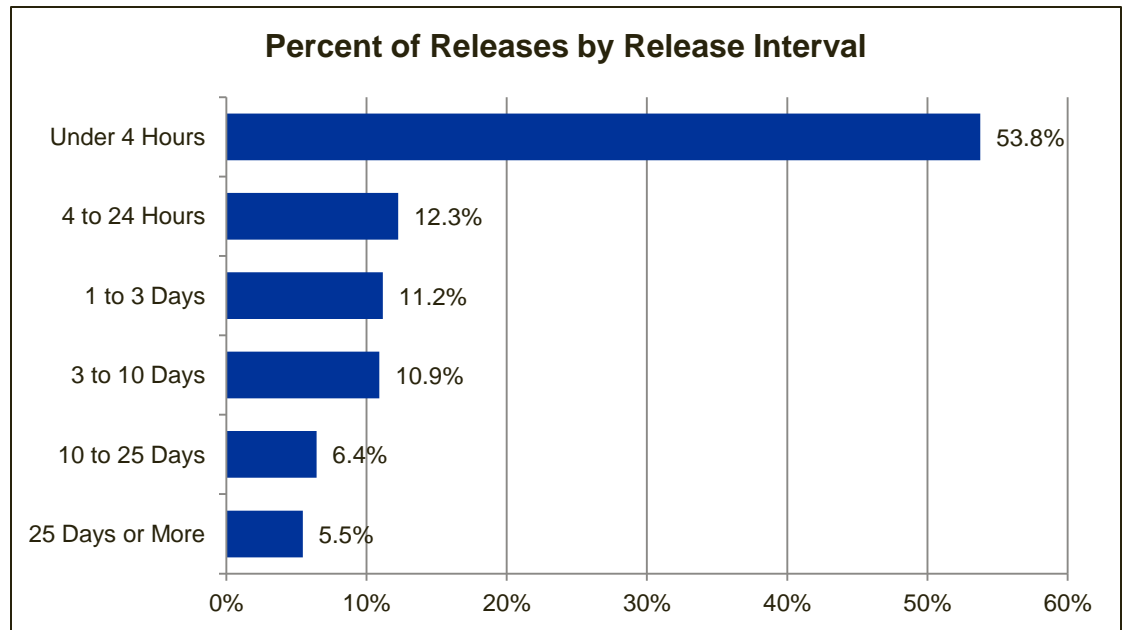
In 2010, 123 adults were booked ten times or more in Multnomah County. These include those who were booked and lodged, as well as those processed through booking and released hours later, i.e. on their own recognizance.

These 123 persons accounted for 1636 bookings. They represent less than 0.6% of the individuals booked in 2010, but nearly 5% of the total standard bookings for the year. These frequently booked persons averaged 13.3 bookings. One person was booked 34 times in 2010.

The charges of those frequently booked were primarily low level misdemeanors and often related to a failure to appear (FTA) warrant. FTA warrants for open container (alcohol), interfering with public transportation, trespass, and theft were common charges of those frequently booked.

More than half of the releases of persons frequently booked occurred less than four hours after the booking. Those in jail over four hours used 7282 bed days or 1.5% of the annual total available beds.

The Sheriff's Office periodically publishes a comprehensive report identifying individuals that are repeatedly booked into jail. This report informs public safety policy and programs developed to assist these persons. Frequently booked reports can be found at:



[http://www.mcso.us/public/Publications\\_Reports/frequently\\_booked.htm](http://www.mcso.us/public/Publications_Reports/frequently_booked.htm)

## Emergency Population Release Appendix: Detailed Info on Monthly Forced Releases



No forced releases occurred during November 2011.

See previous reports for detailed information on monthly forced releases.

