

# **MULTNOMAH COUNTY SHERIFF'S OFFICE**

## **Monthly Jail Report, March 2011**



*Multnomah County Sheriff's Office - Dan Staton, Sheriff*  
*501 SE Hawthorne Blvd., Suite 350 Portland OR 97214*  
*503-988-4300 (TTY 503-988-4500) [www.mcso.us](http://www.mcso.us)*

# ***Welcome to the Multnomah County Sheriff's Office Monthly Jail Report!***

This report is a monthly publication of MCSO's Resource Analysis Unit. We are eager to hear any suggestions or feedback you may have. Please feel free to contact any one of us in the RAU:

David Braaksma  
Markley Drake  
Wendy Lin-Kelly  
Lt. Jeff Wheeler

503-988-4300

## ***March Summary (and reference page):***

Standard bookings: 2903 (p. 3)

Average Length of Stay: 13.01 days (p. 8)

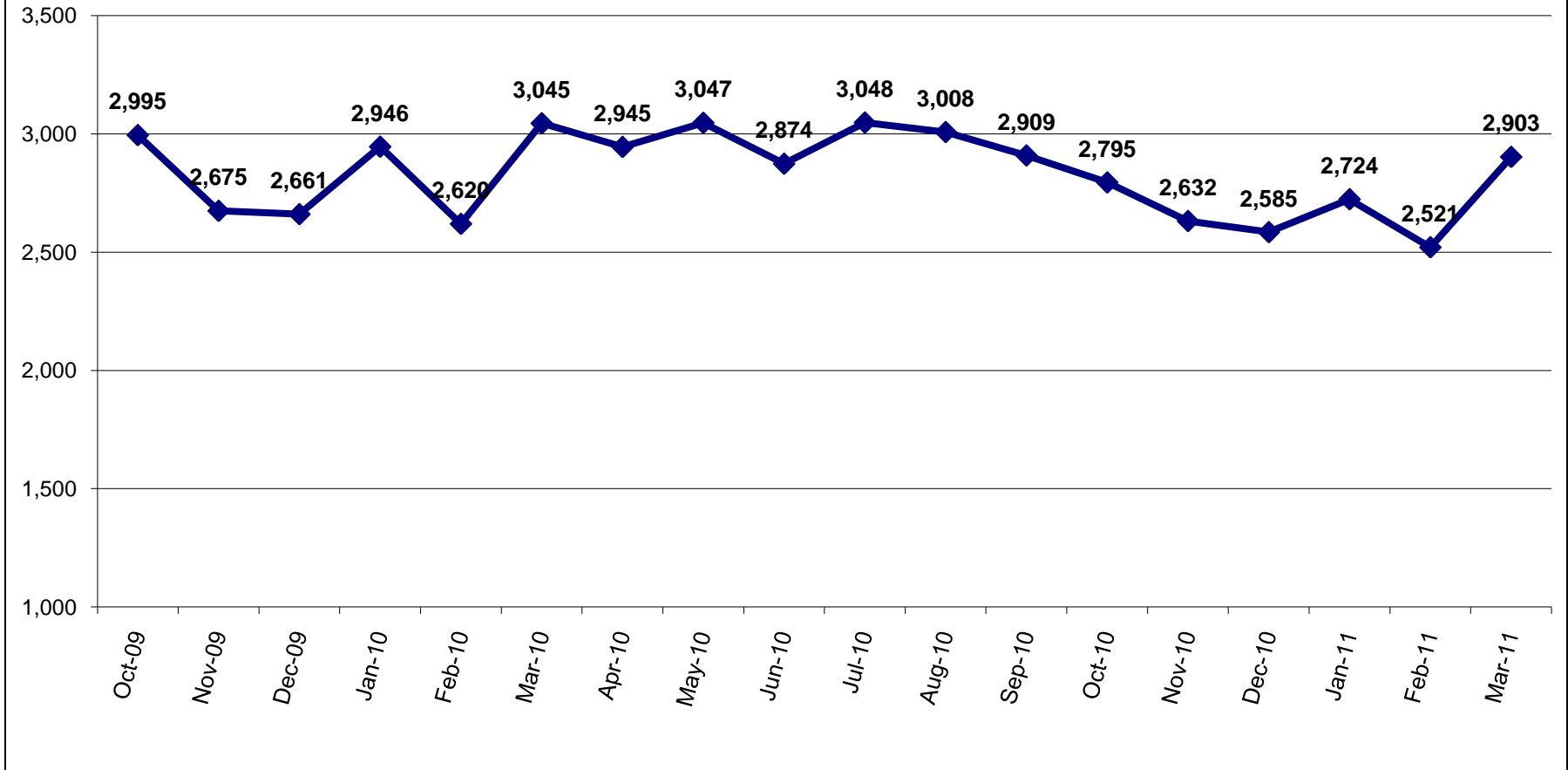
Capacity: 1310 beds (p. 10)

Average Daily Population: 1139, 87% of capacity (p. 10)

Forced Releases (Emergency Population Releases): 0 (p. 14)



# Standard Bookings

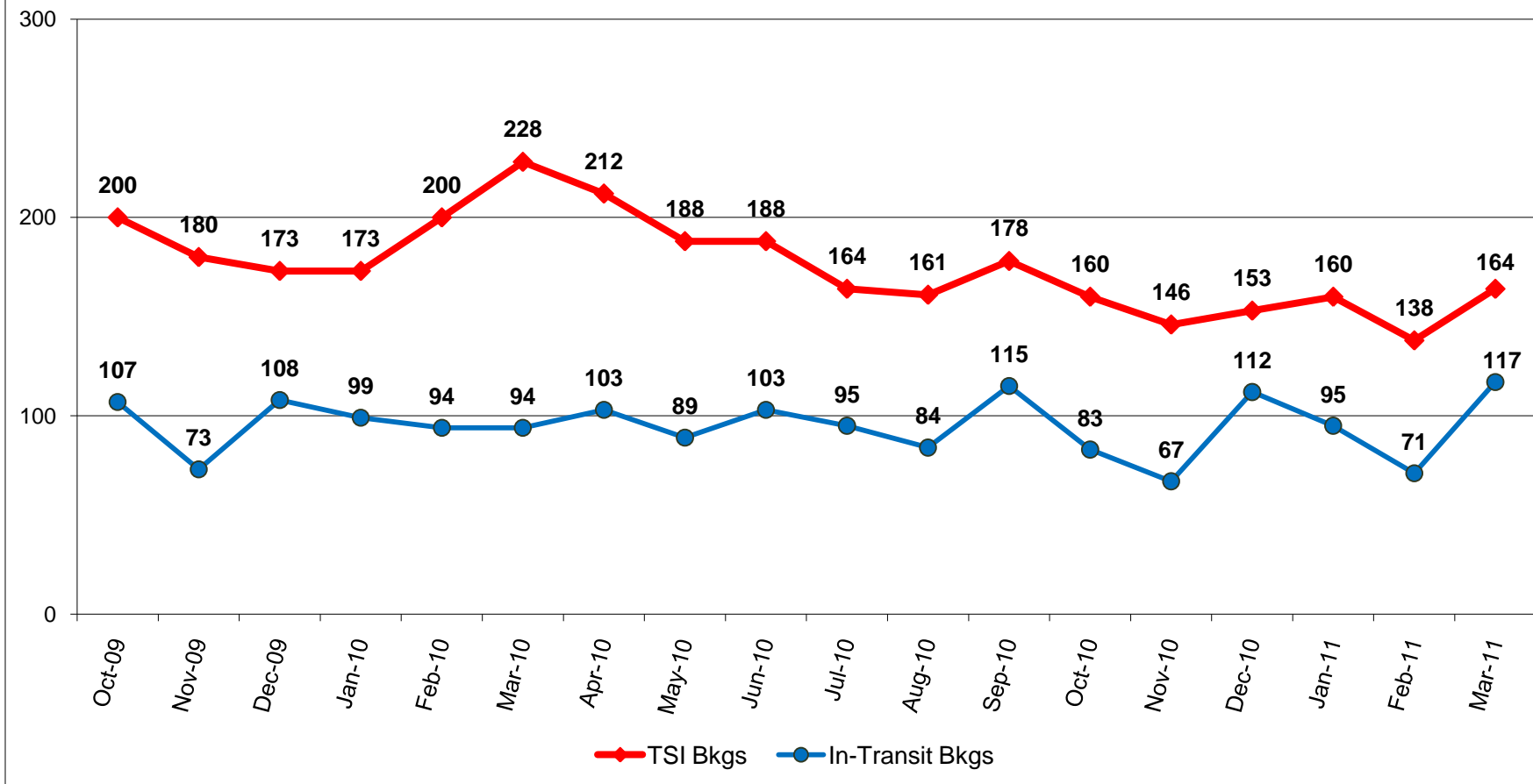


Standard bookings totaled 2903 in March 2011, averaging 94 bookings per day.



*Exemplary Service for a Safe, Livable Community*

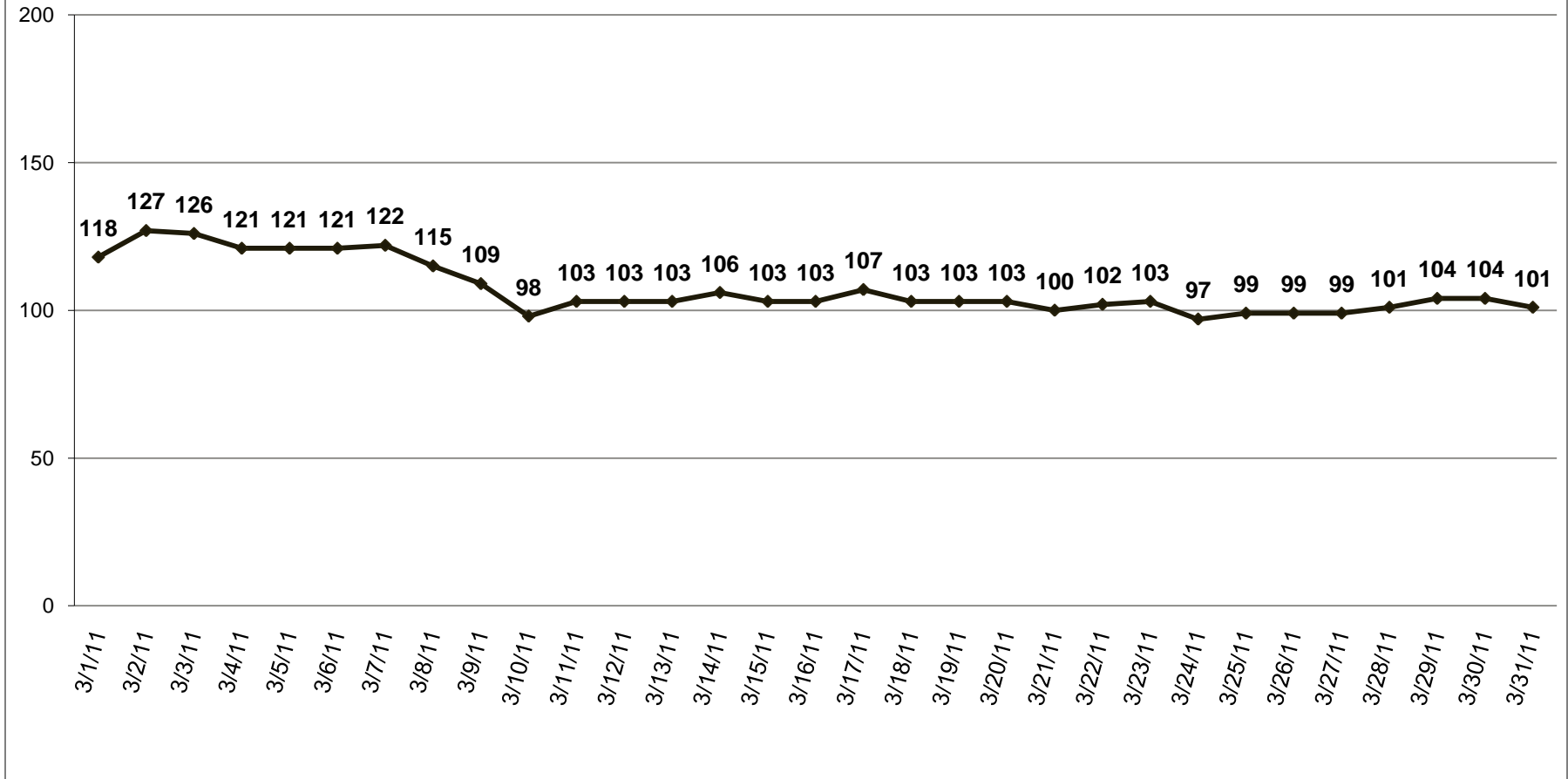
## Turn-Self In and In-Transit Bookings



Turn-Self In (TSI) bookings are where an offender has been sentenced and ordered to return to jail at a later date. In-Transit bookings are of those being held for other jurisdictions while being transported. The number of In-Transit and TSI bookings both increased between February and March.



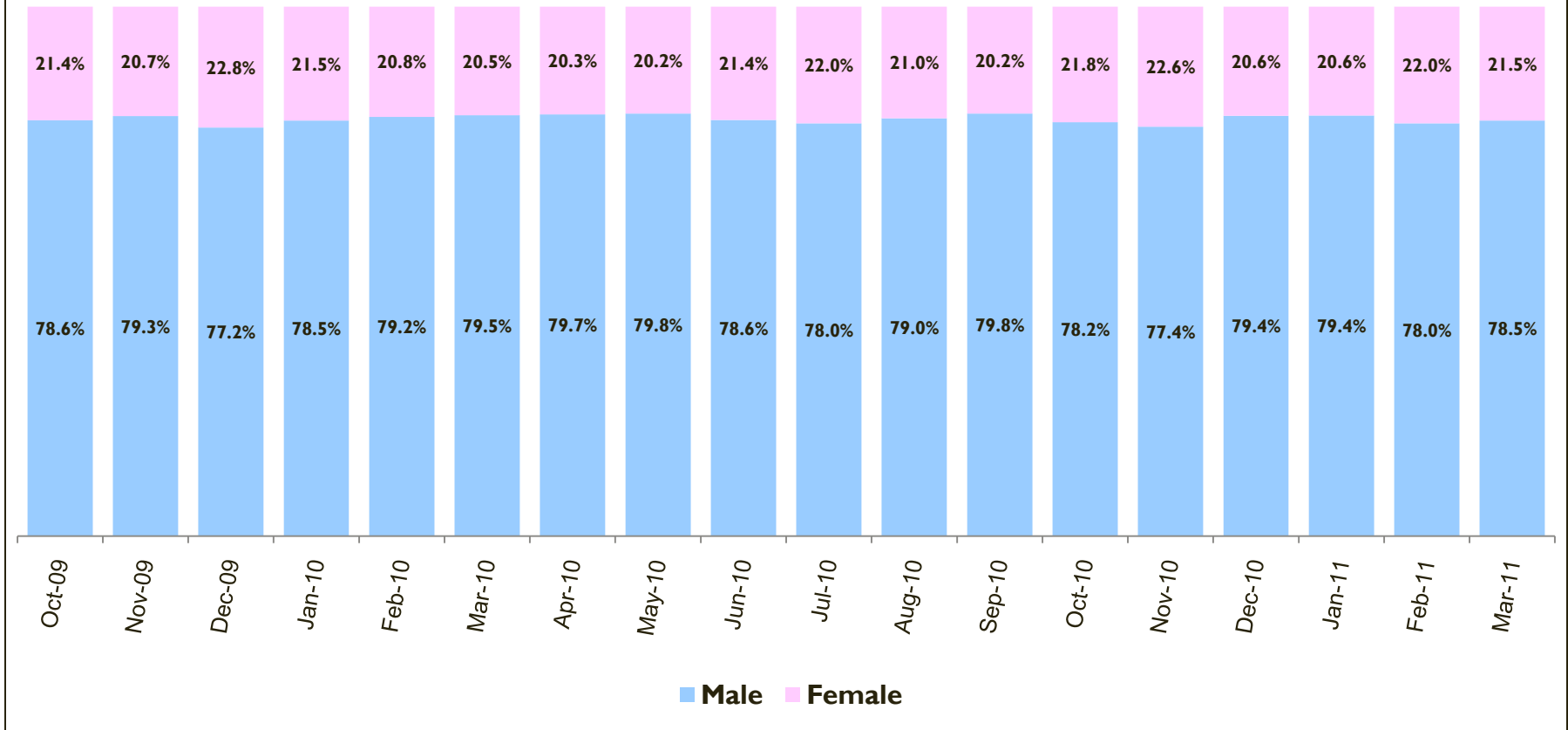
## Daily Count of Exclusive U.S. Marshal Inmates



US Marshal inmates averaged 107 per day in March 2011, down from an average of 130 per day in February. As US Marshal inmate counts per day may change over time, these data are as of April 1, 2011.



## Gender Composition of Bookings

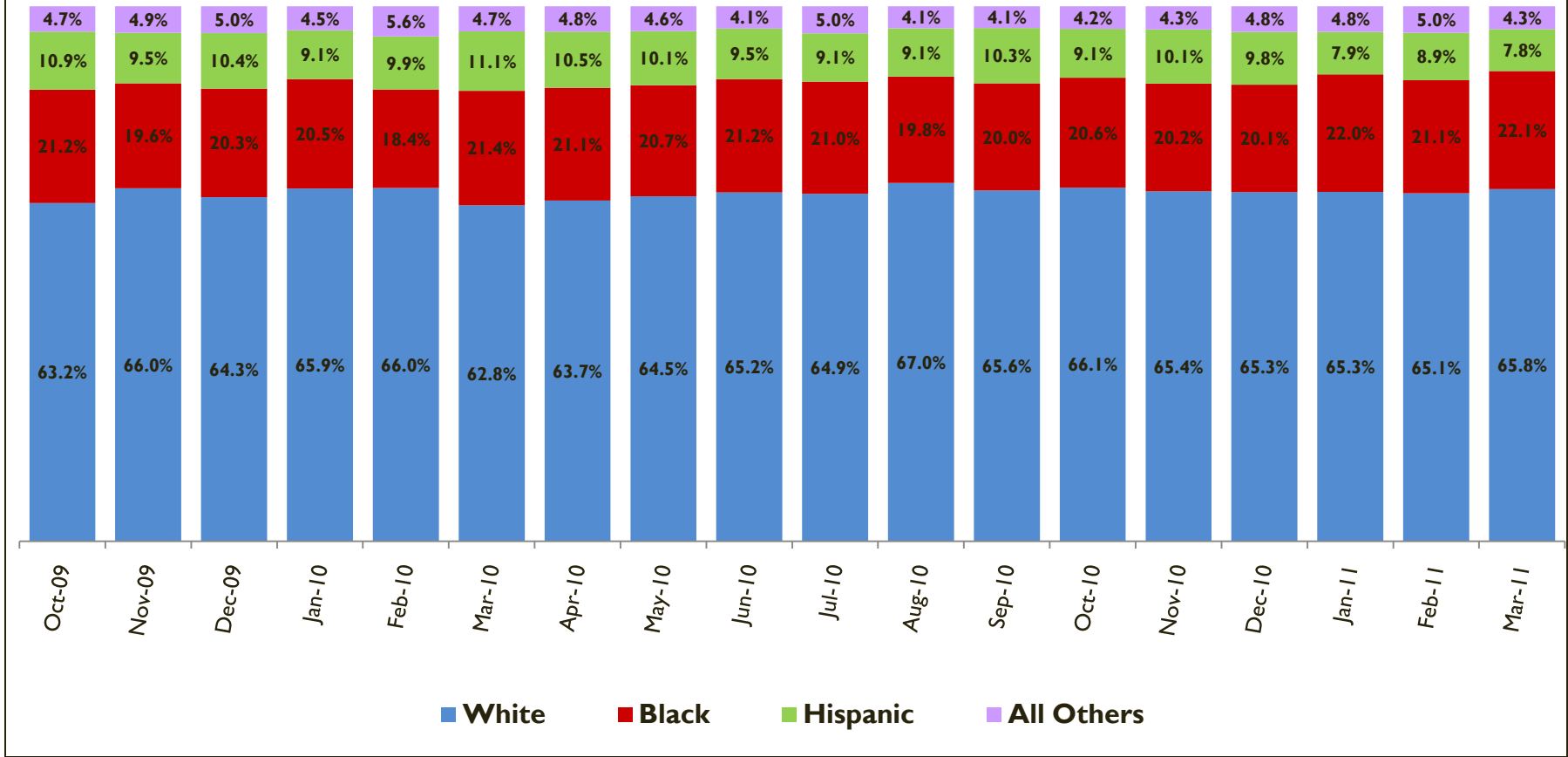


\*Includes standard and TSI bookings.

The percent of females and males booked is typically between 18 - 22% and 78 - 82%, respectively.



# Ethnic Composition of Bookings

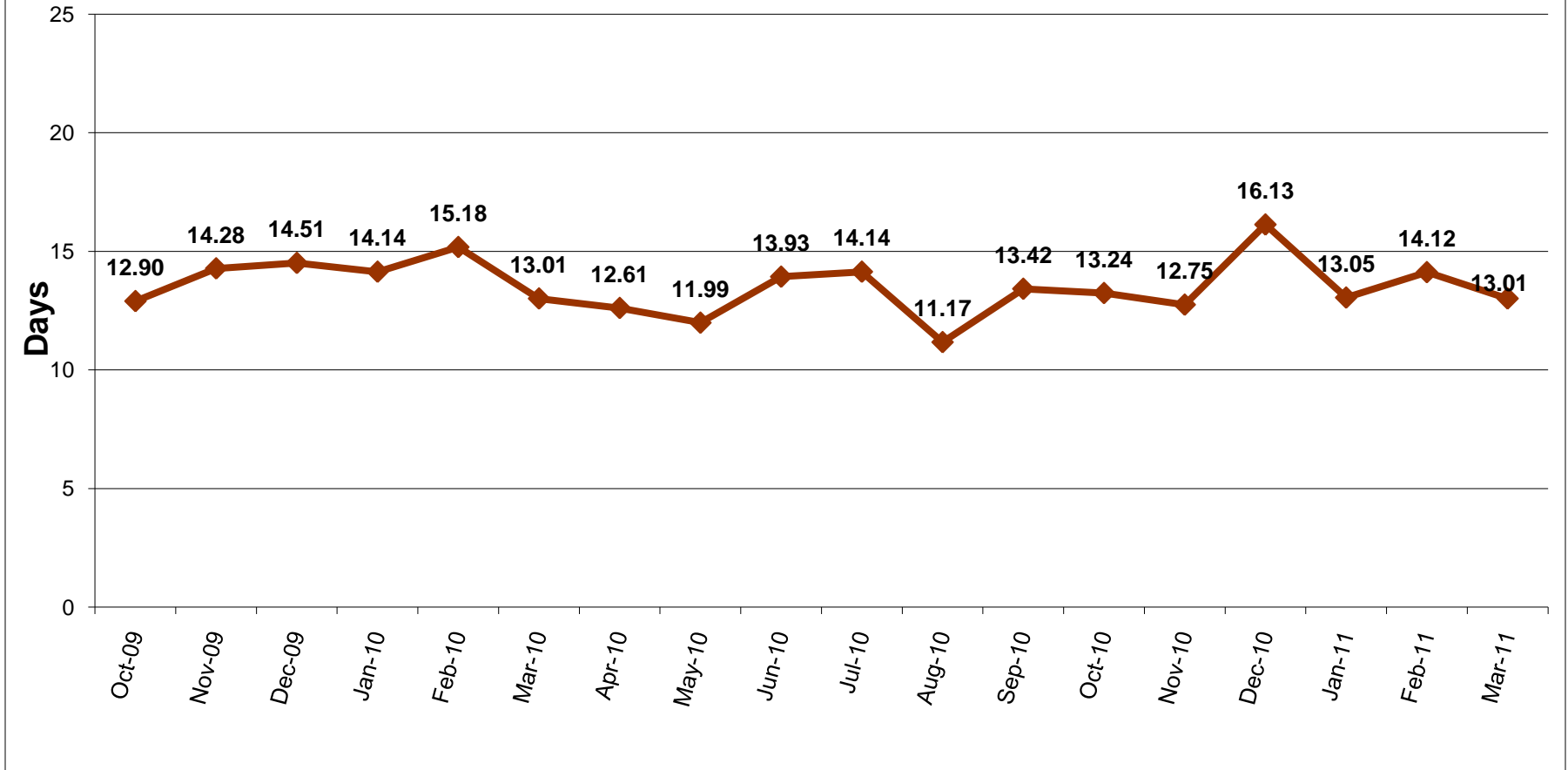


\*Includes standard and TSI bookings.

The ethnic composition of bookings is relatively stable month to month. Approximately two-thirds of those booked are White.



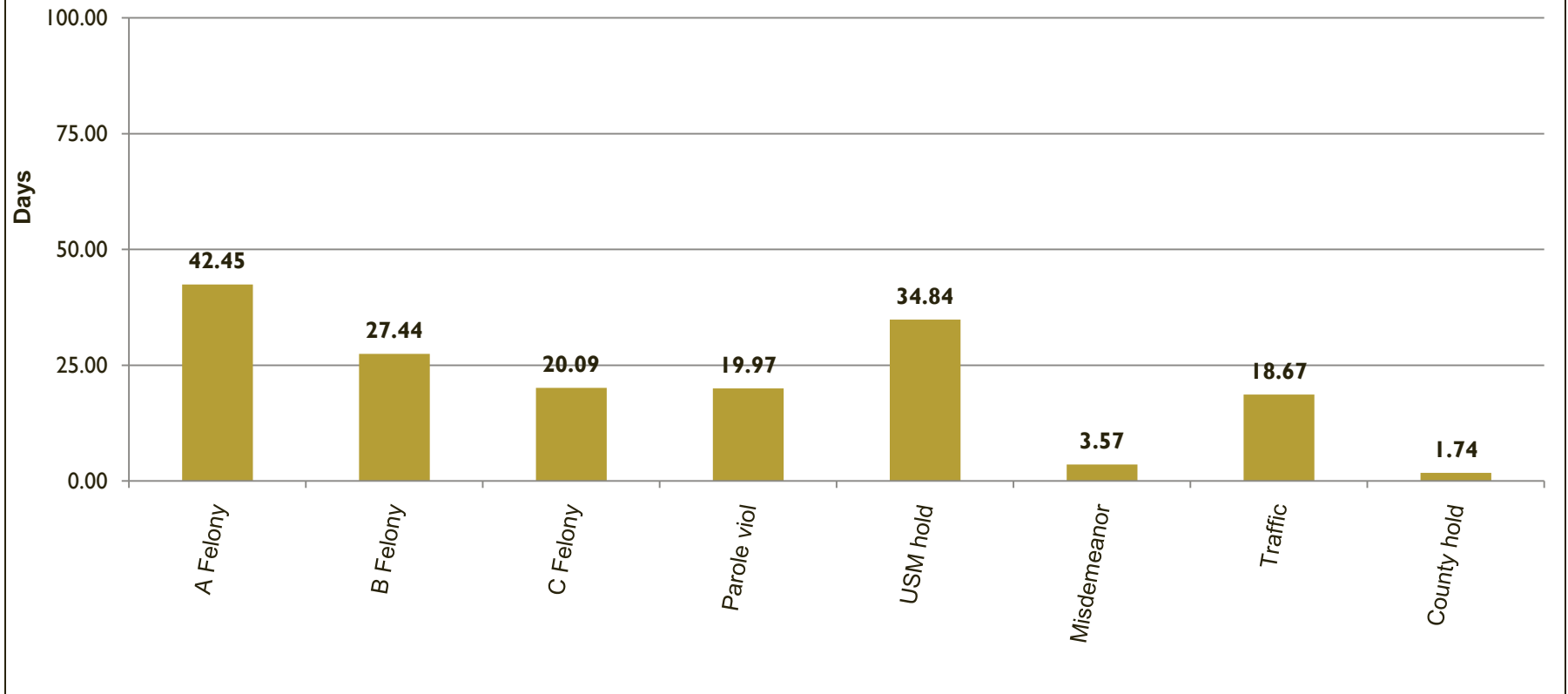
## Average Length of Stay (in days)



The average length of stay was 13.01 days for inmates released in March.



## Average Length of Stay by Charge Priority (for inmates released during the month)

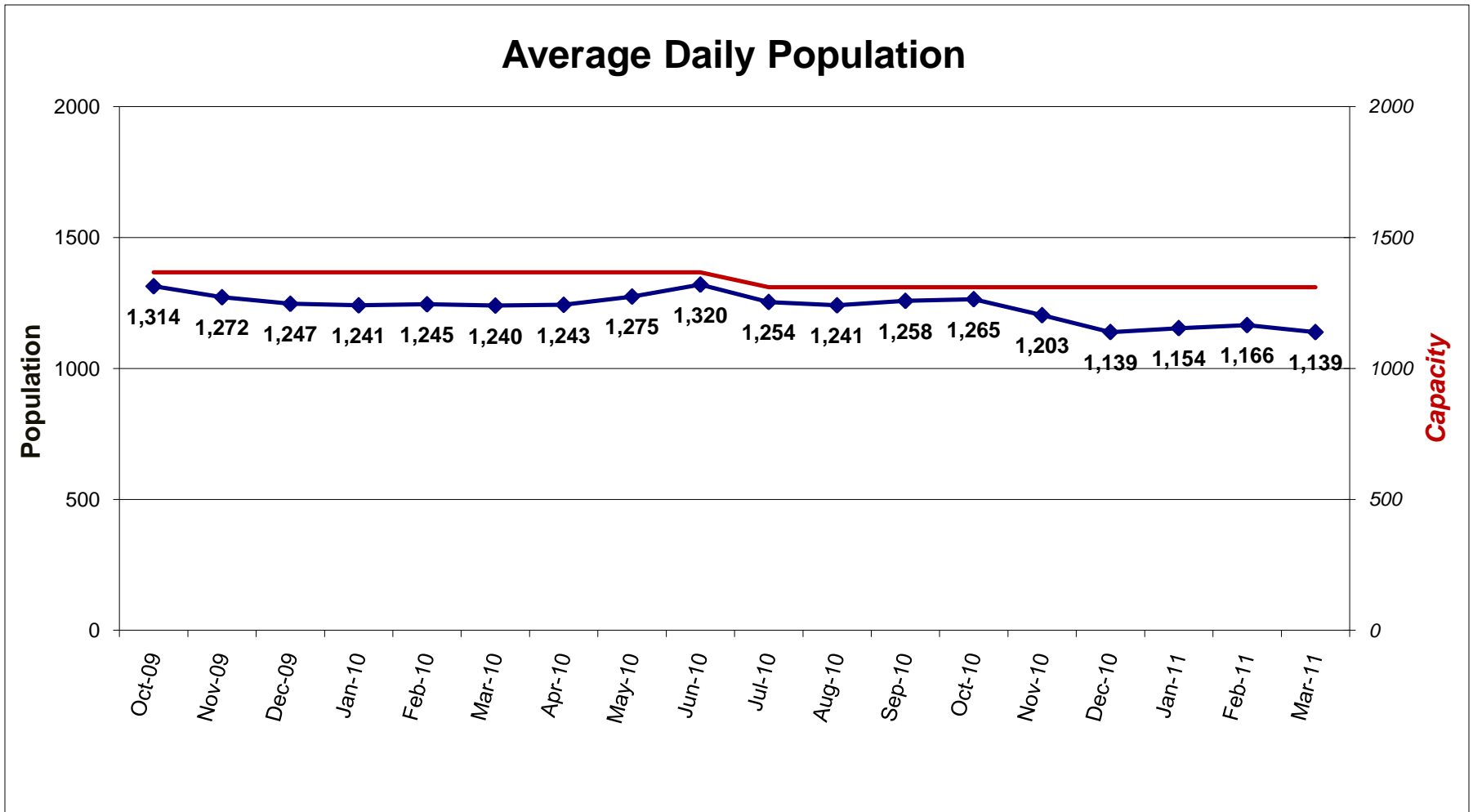


\*Data based on primary or most serious charge, regardless of status of the case.

In March 2011, 867 inmates with felony charges were released. They had an average length of stay of 25 days. The 1383 inmates released with misdemeanor charges had an average length of stay of under 4 days.



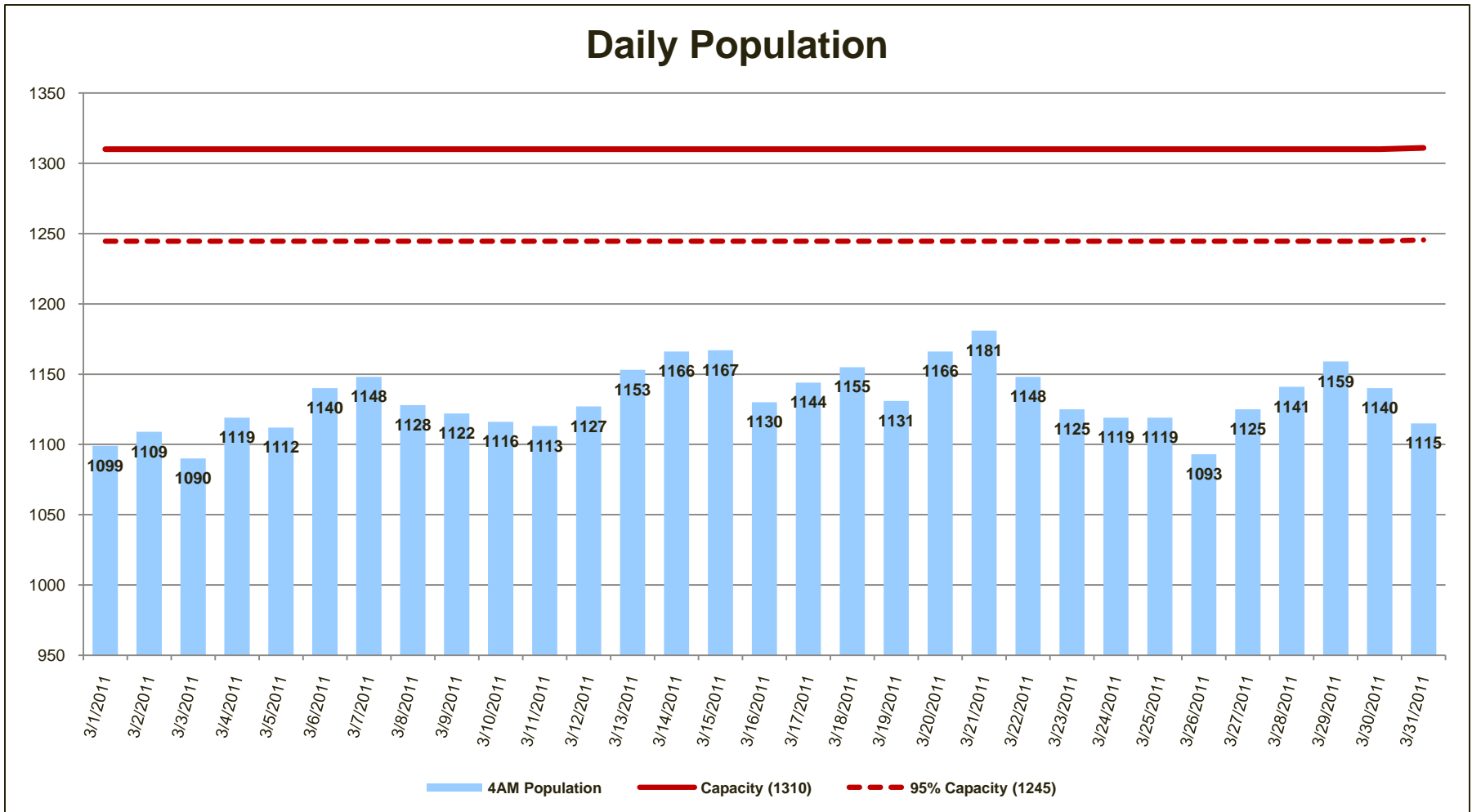
## Average Daily Population



On July 1, 2010, the capacity of Multnomah County's two jail facilities was reduced from 1367 to 1310. The average daily population in March was 1139, which is 87% of capacity.



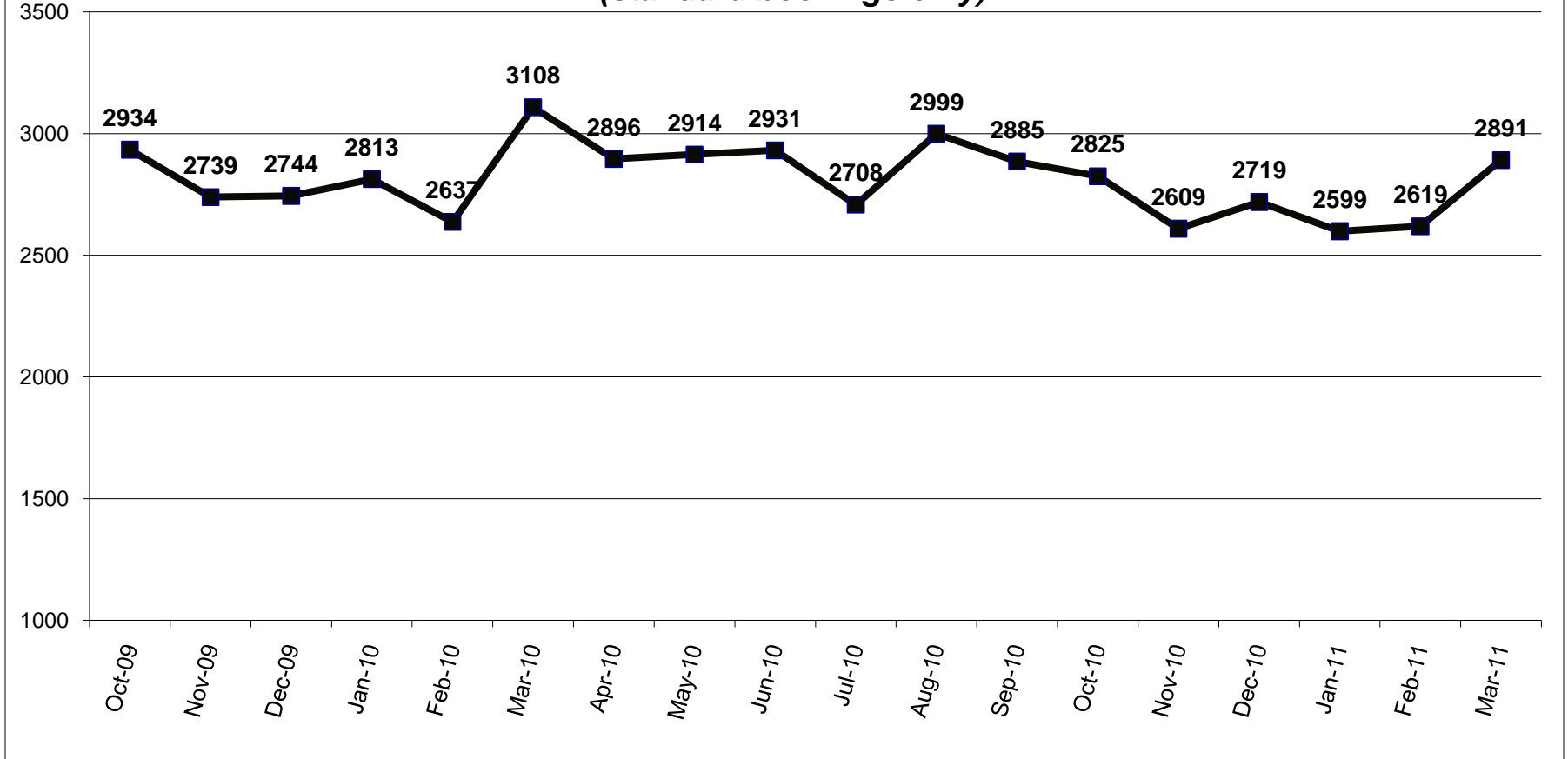
# Daily Population



On September 17, 2010, the MCIJ Jail Commander issued Special Order 10-29 which established a process whereby Dorm 3, with 57 beds, could be opened to avoid conducting Emergency Population Releases. It was not necessary to open Dorm 3 in March 2011.



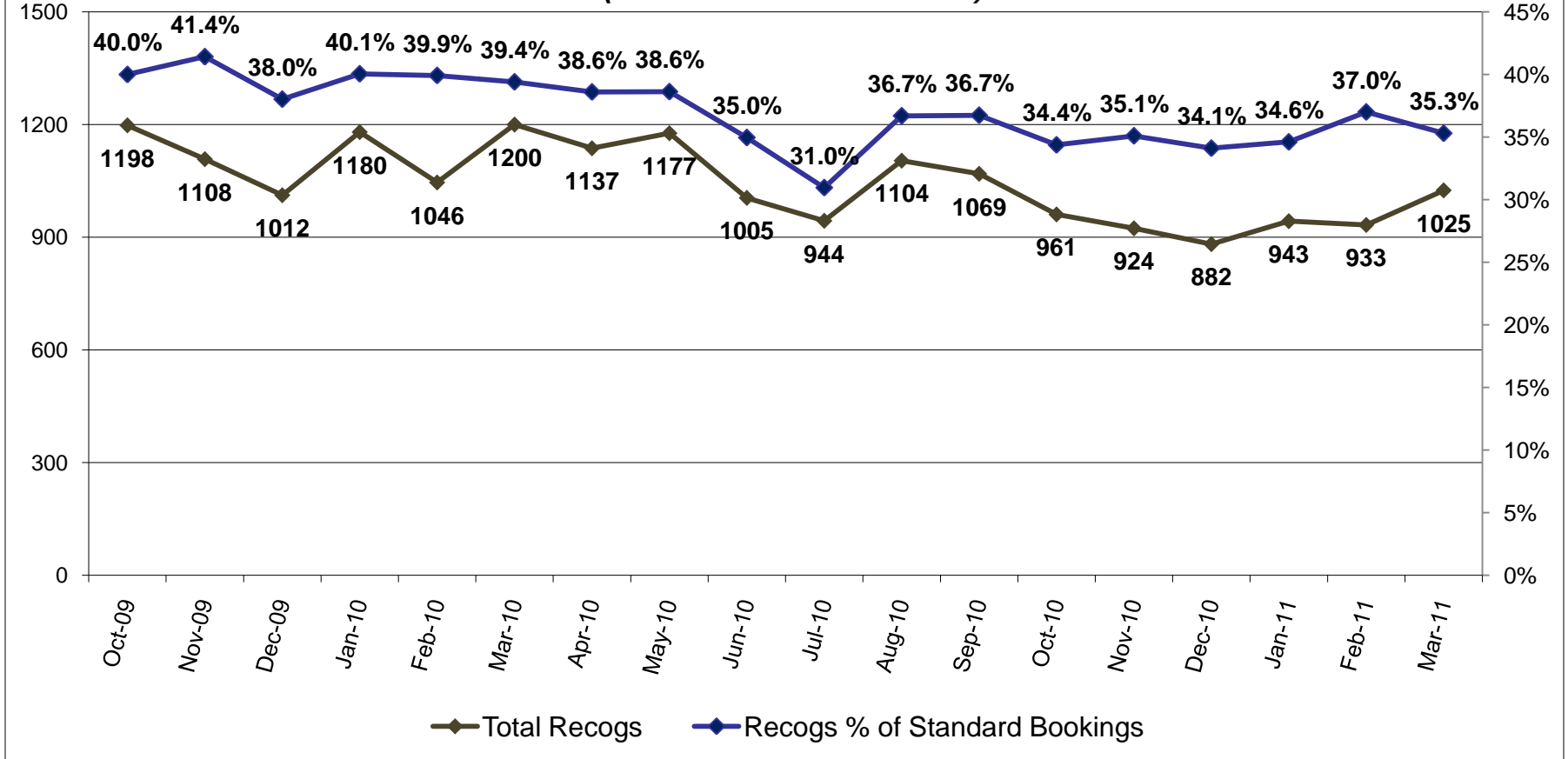
## Total Releases (standard bookings only)



Releases among standard bookings decreased slightly from an average of 94 per day in February to an average of 93 per day in March.



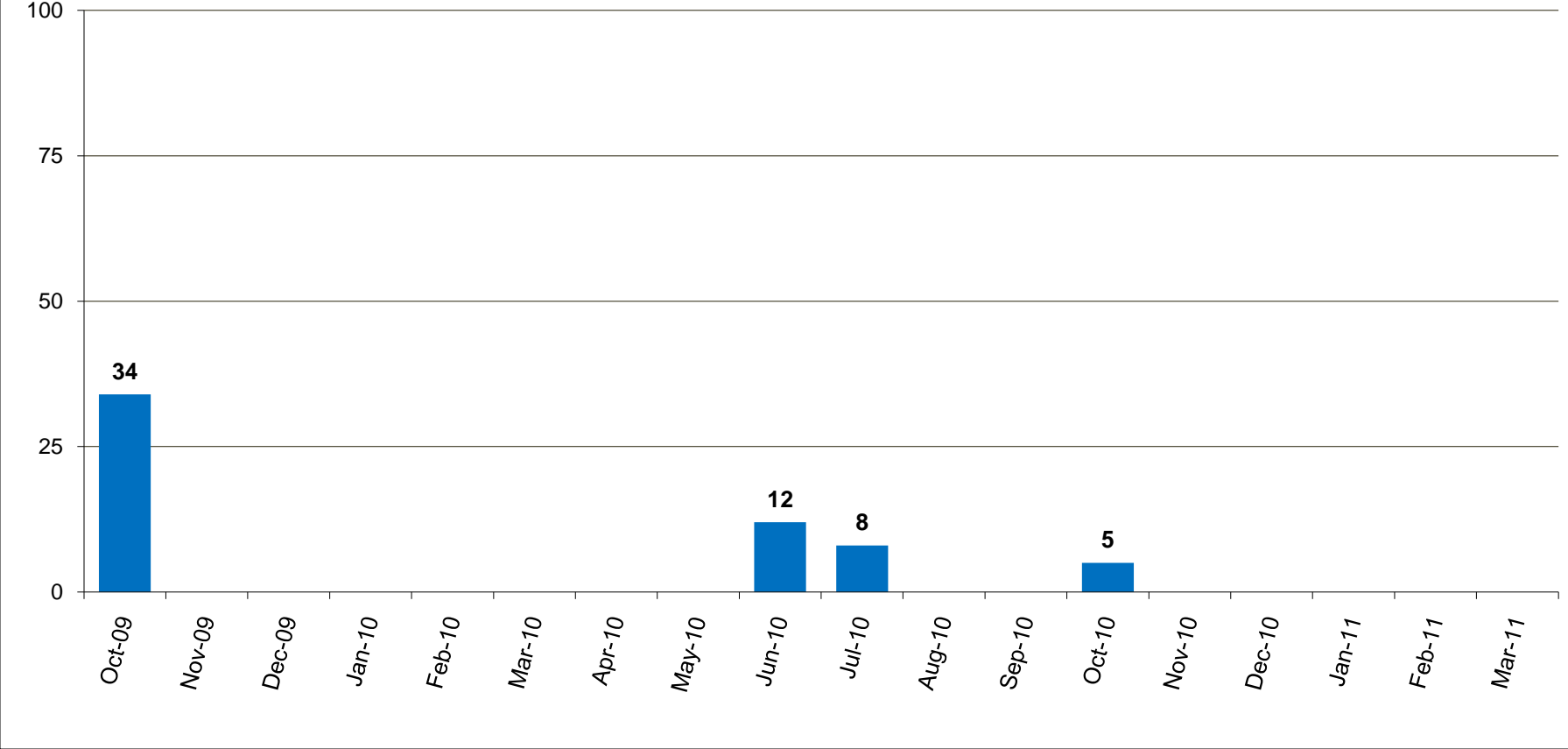
## Recognizance Releases (subset of total releases)



Recognizance releases remained fairly constant between February and March, averaging 33 per day for both months. The percentage of recognizance releases to standard bookings decreased slightly in March.



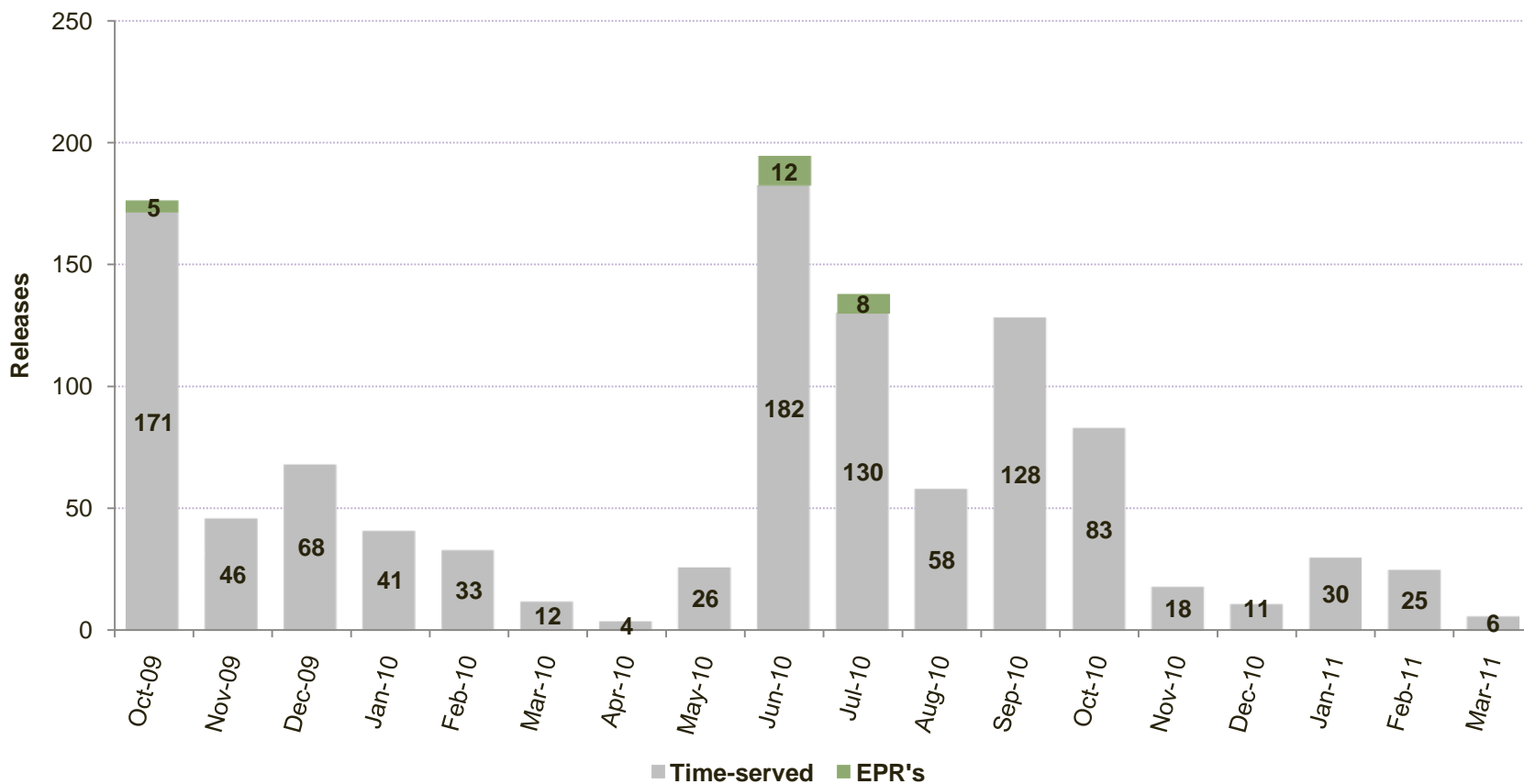
# Forced Releases (EPRs)



\*Forced releases may occur per Multnomah County Board Resolution 04-135 as part of the jail capacity management plan. There were no forced releases in March 2011.



### Releases between 12 AM and 8 AM\*

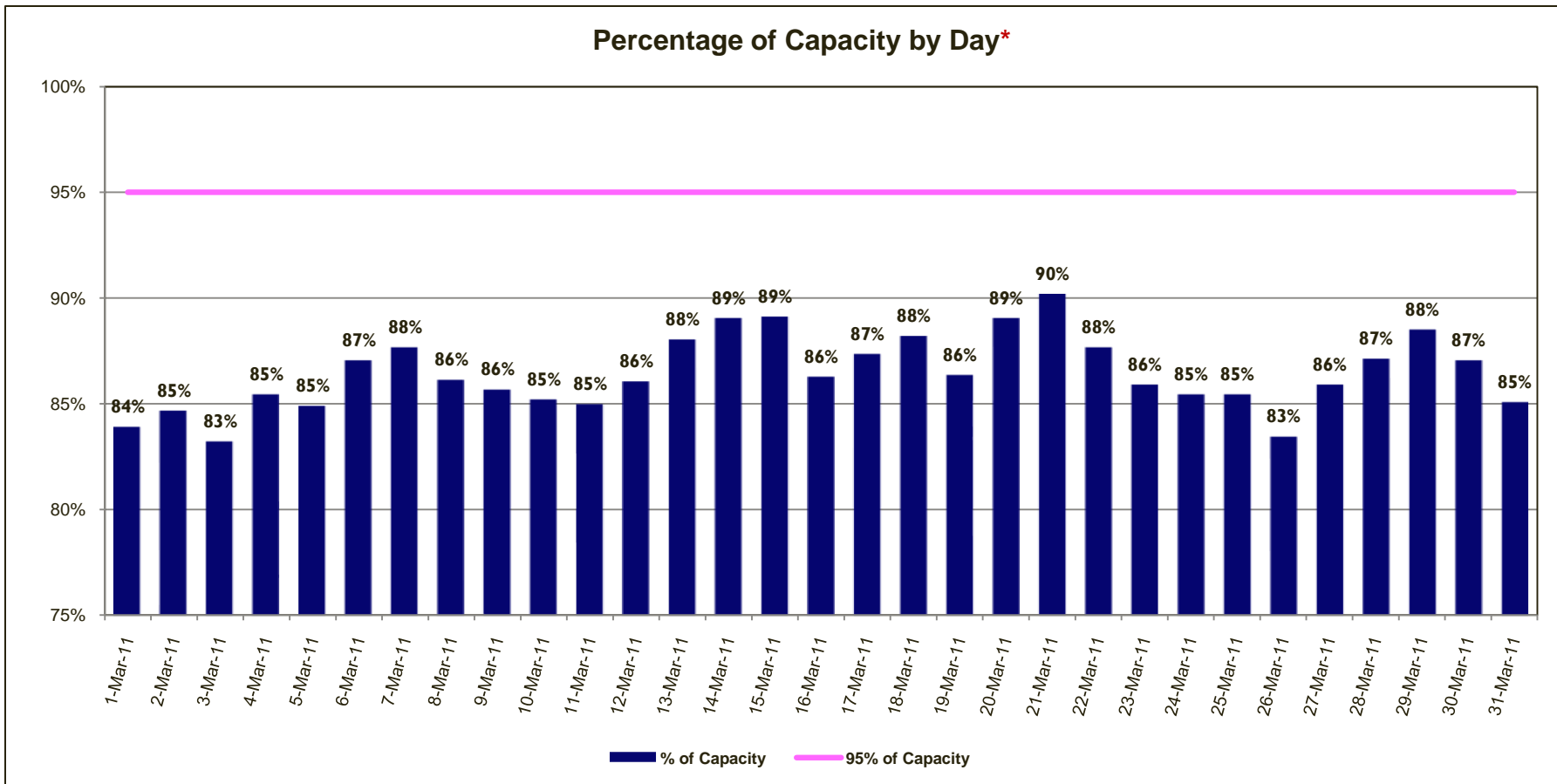


\*Non-discretionary court-ordered and recognizance releases are not included.

In March 2011, six time-served inmates were released from jail between the hours of 12AM and 8AM.



### Percentage of Capacity by Day\*

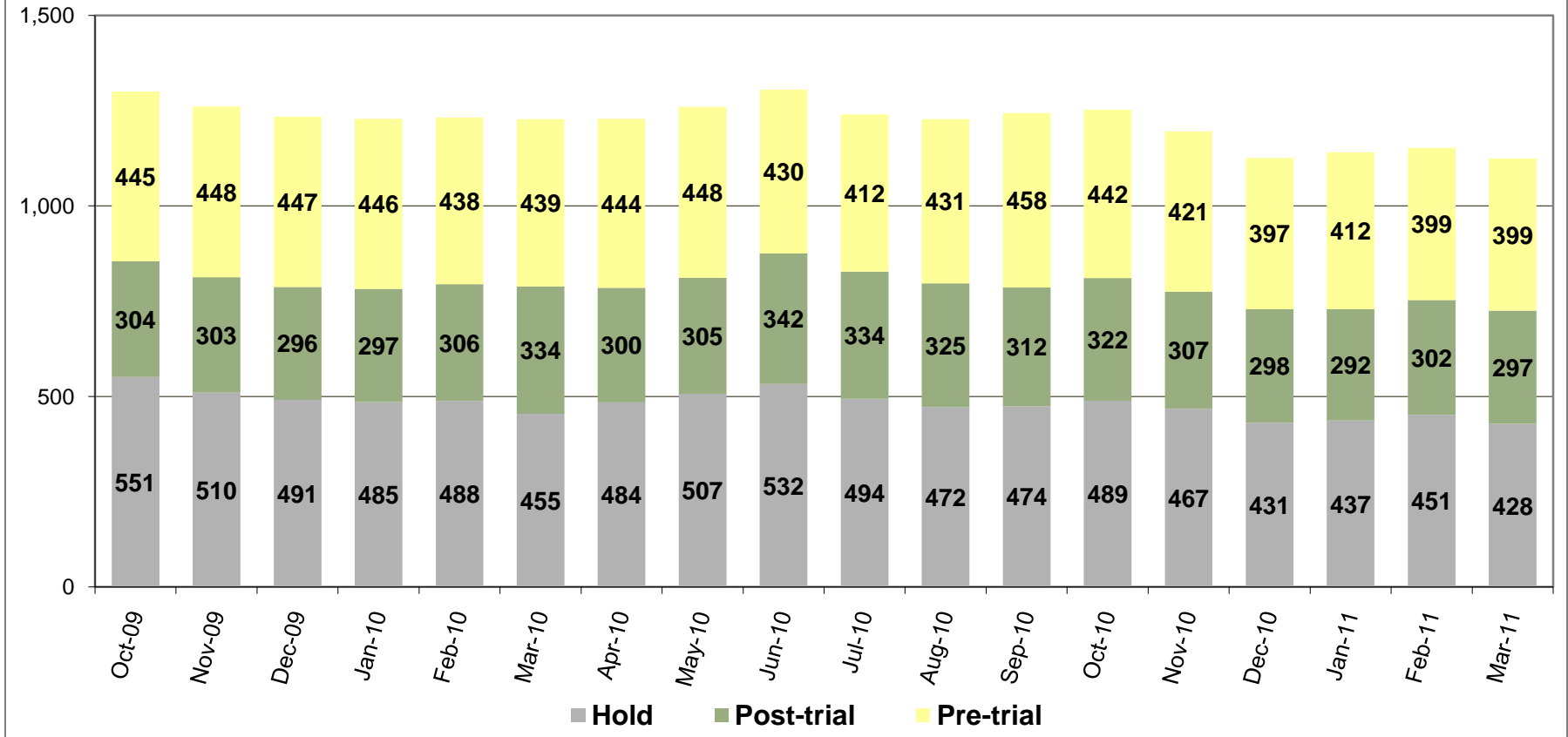


\*Red bars indicate days on which EPRs occurred, if any. EPRs do not always or only occur when capacity exceeds the 95% threshold. Efforts are made to balance the population to the demands of the classification system for specific types of jail beds and balance the space needs for male or female inmates. Additionally, jail capacity varies throughout the day. These capacity calculations are based on 4 AM population counts.

On September 23, 2010, the Multnomah County Board of Commissioners adopted Resolution No. 2010-141 whereby if the number of inmates housed within the Multnomah County jail system reaches 95% of the population limit, a county jail population emergency will exist.



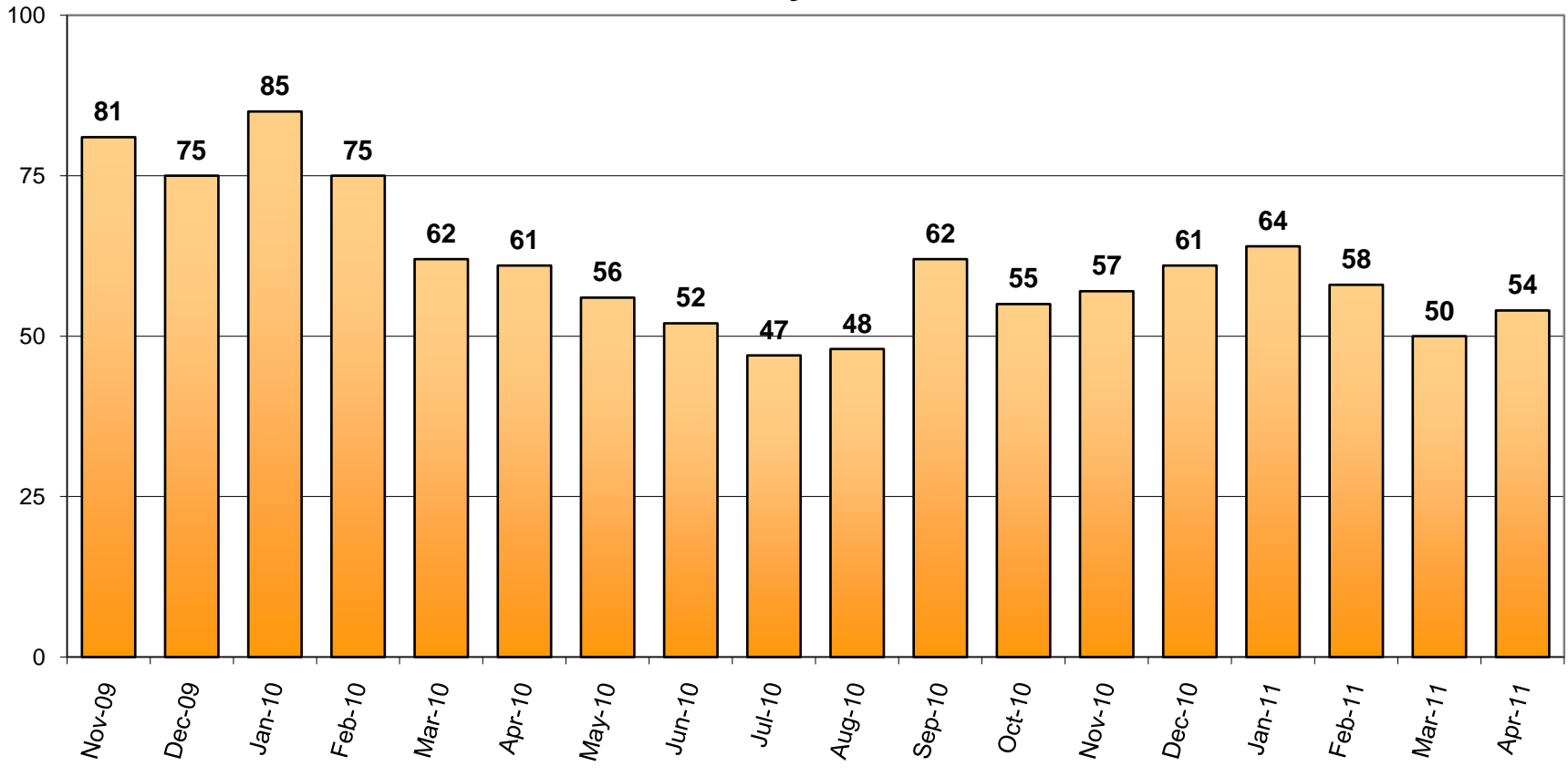
## Pre-Trial vs. Post-Trial vs. Holds in Custody Average Daily Population



The average number of inmates jailed on holds and post-trial both decreased between February and March. The average number of pre-trial inmates remained constant during the same time period.



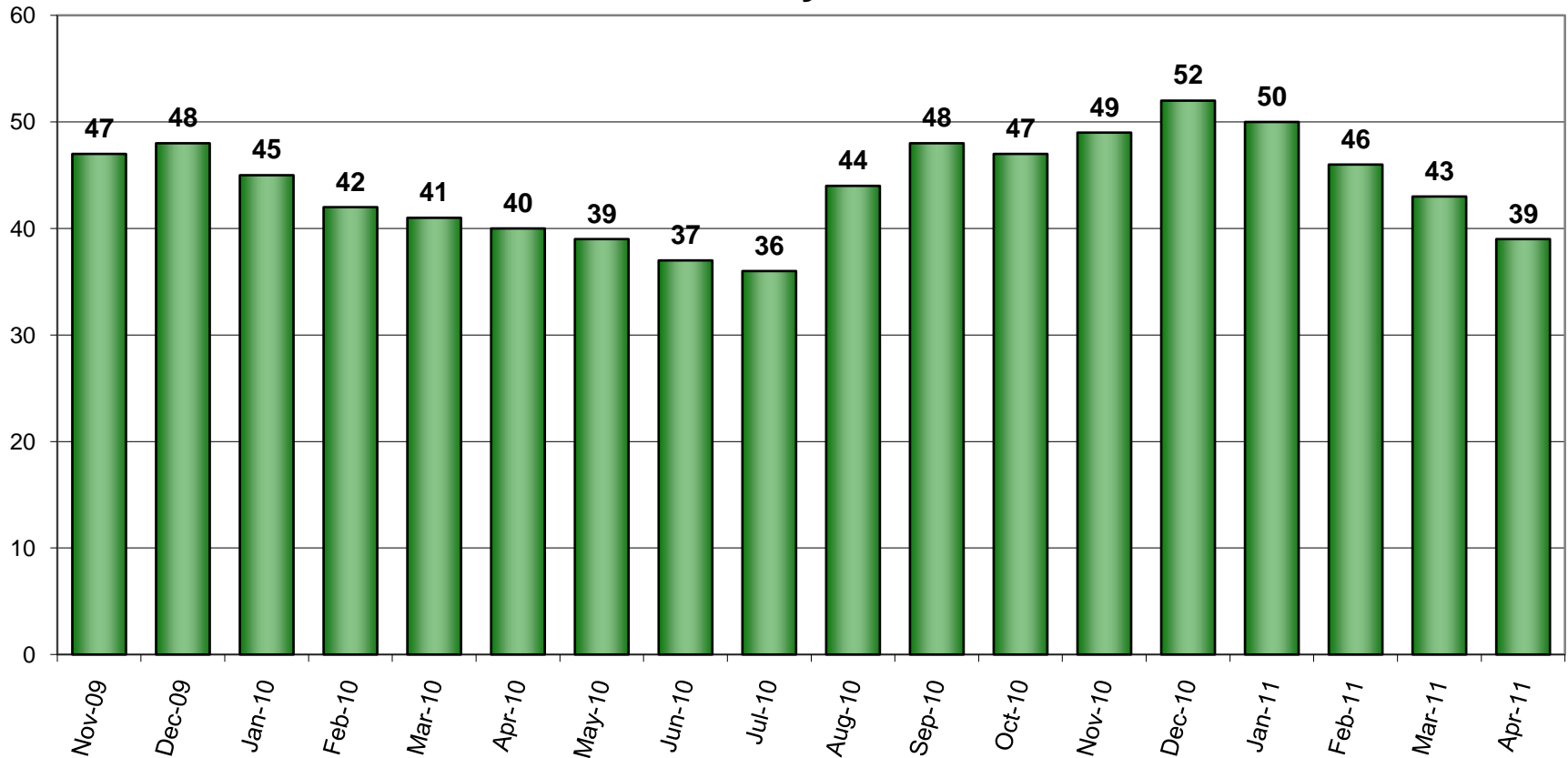
## Count of Persons Held Pre-trial more than 150 Days on First Day of Month



The number of inmates jailed pre-trial more than 150 days was 54 on April 1, 2011.



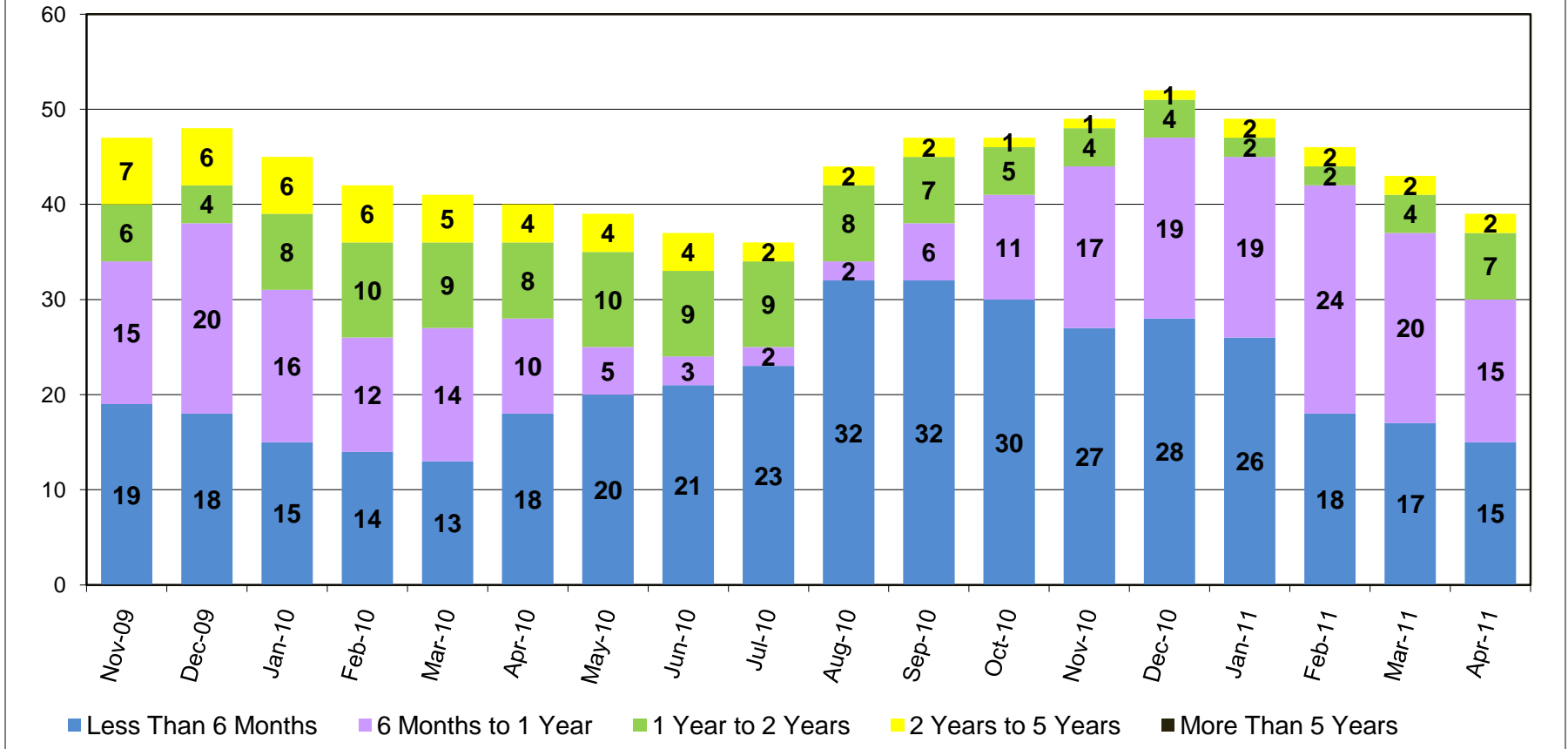
## Count of Persons Held Pre-trial on Murder Related Charges on First Day of Month



On April 1, 2011, a total of 39 inmates accused of murder were being held pre-trial.



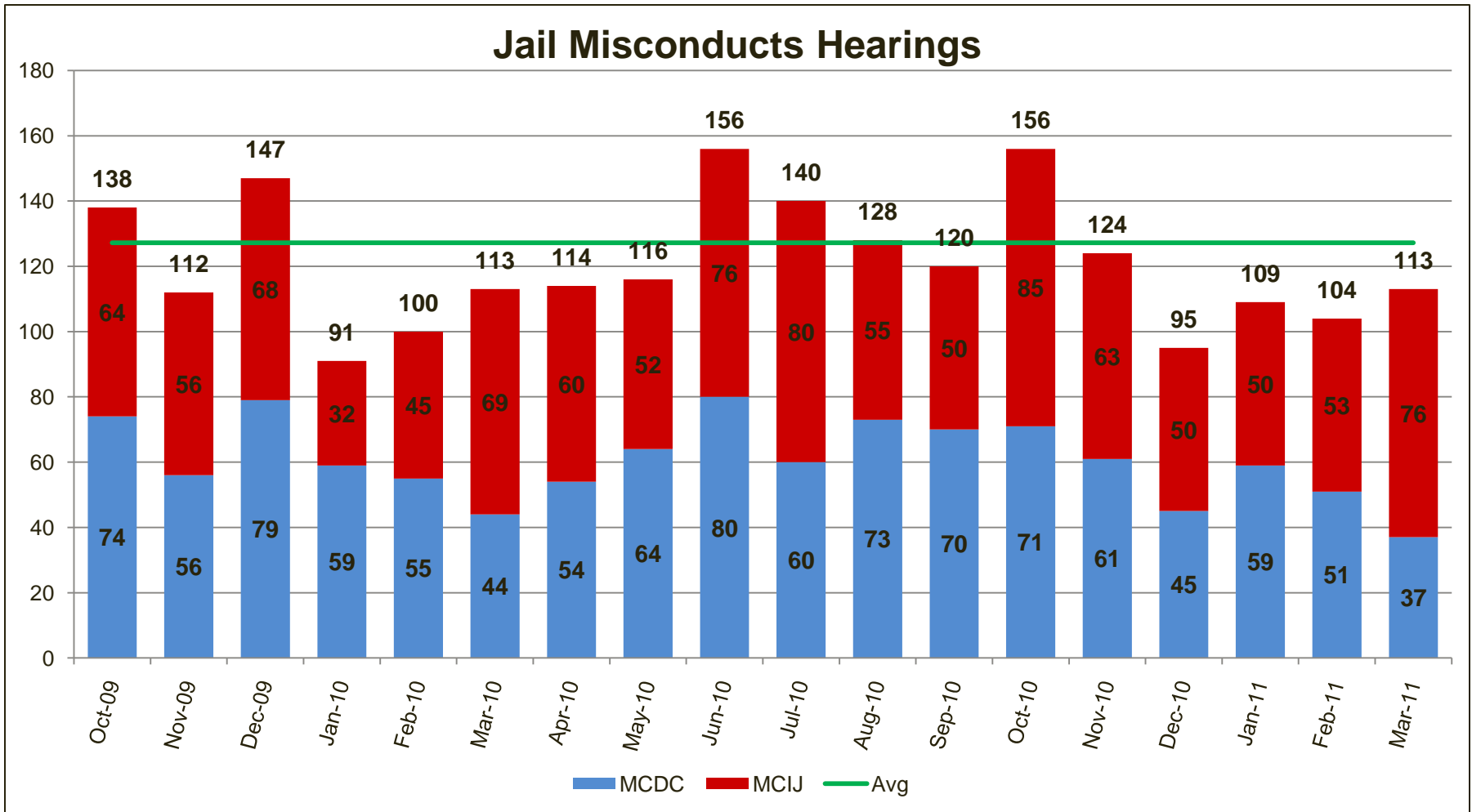
## Count of Pre-trial persons with Murder Related Charges by Length of Stay on First Day of Month



As of April 1, 2011, there were nine inmates accused of murder and held pre-trial in jail for longer than one year.



## Jail Misconducts Hearings



As the jail capacity decreases and housing options become more limited, there are increased challenges in managing the inmate population. Tracking misconducts of inmates informs jail management on classification, housing, and other operational issues.



## Emergency Population Release Appendix: Detailed Info on Monthly Forced Releases



No forced releases occurred during March 2011.

See previous reports for detailed information on monthly forced releases.

