

MULTNOMAH COUNTY SHERIFF'S OFFICE

Monthly Jail Report, June 2011



Multnomah County Sheriff's Office - Dan Staton, Sheriff
501 SE Hawthorne Blvd., Suite 350 Portland OR 97214
503-988-4300 (TTY 503-988-4500) www.mcso.us

Welcome to the Multnomah County Sheriff's Office Monthly Jail Report!

This report is a monthly publication of MCSO's Resource Analysis Unit. We are eager to hear any suggestions or feedback you may have. Please feel free to contact any one of us in the RAU:

David Braaksma
Markley Drake
Wendy Lin-Kelly
Lt. Jeff Wheeler

503-988-4300

June Summary (and reference page):

Standard bookings: 2828 (p. 3)

Average Length of Stay: 11.21 days (p. 8)

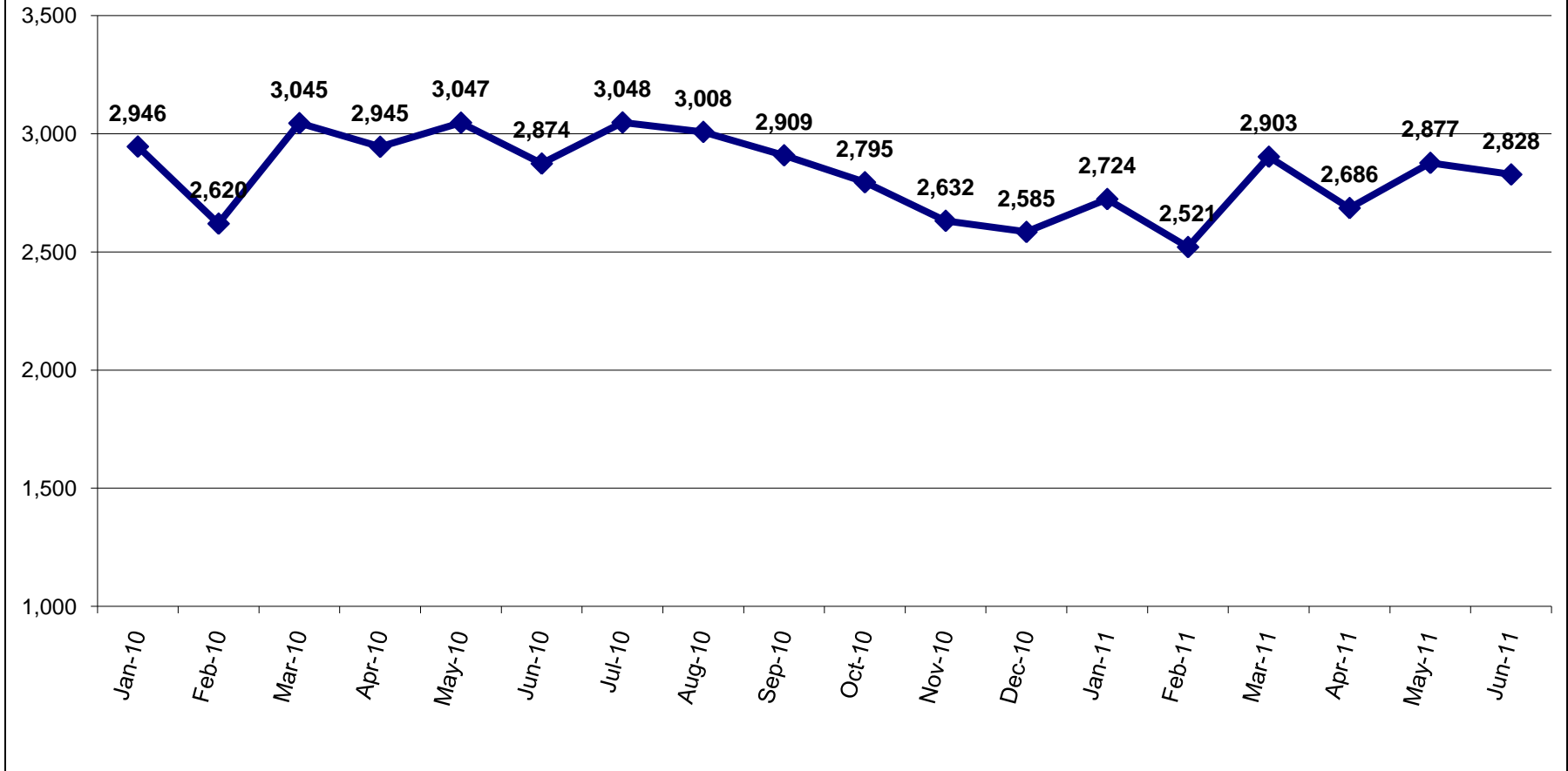
Capacity: 1310 beds (p. 10)

Average Daily Population: 1161, 88.6% of capacity (p. 10)

Forced Releases (Emergency Population Releases): 0 (p. 14)



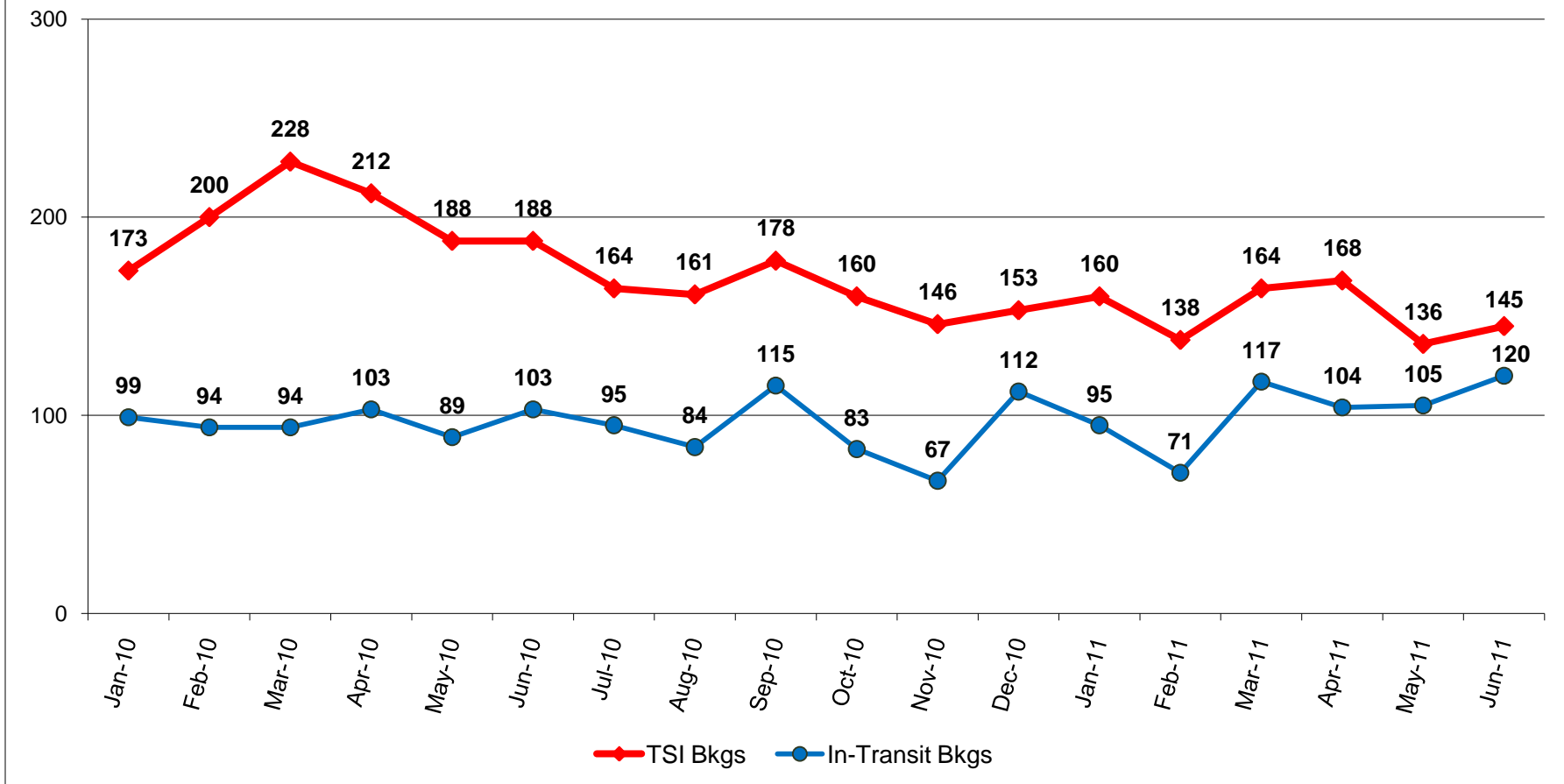
Standard Bookings



Standard bookings totaled 2828 in June 2011, averaging 94 bookings per day.



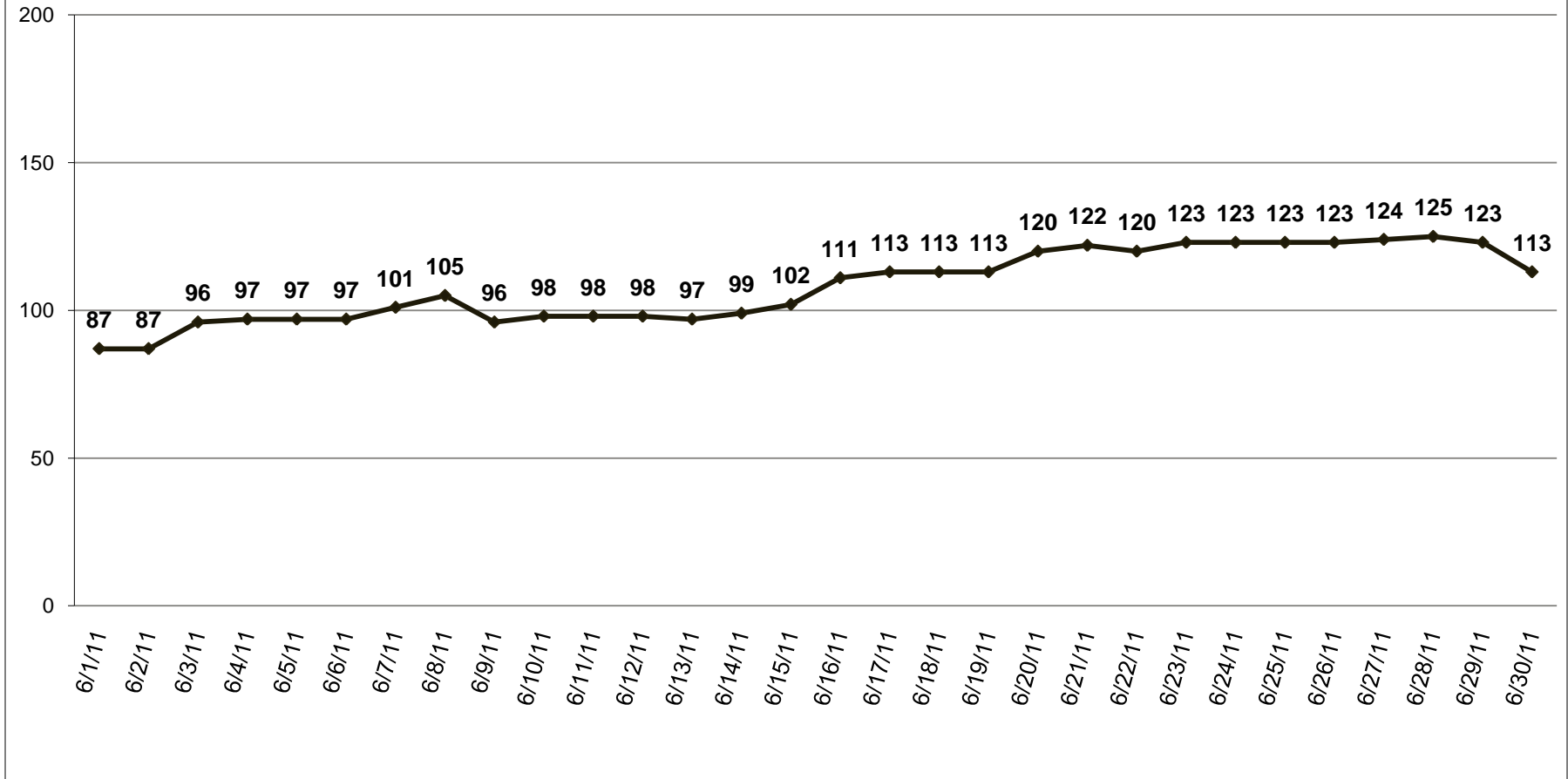
Turn-Self In and In-Transit Bookings



Turn-Self In (TSI) bookings are where an offender has been sentenced and ordered to return to jail at a later date. In-Transit bookings are of those being held for other jurisdictions while being transported. The number of TSI bookings and In-Transit bookings both increased between May and June.



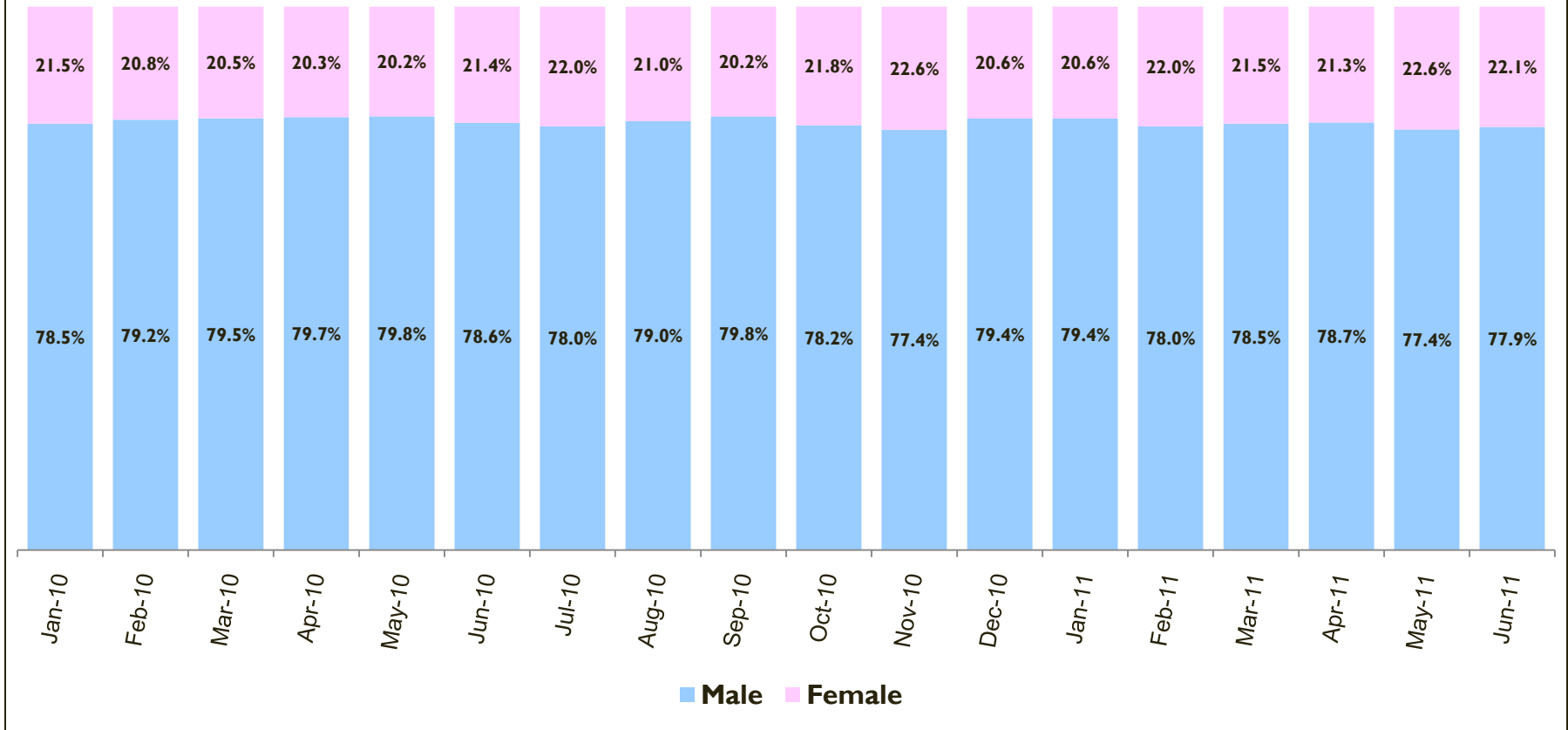
Daily Count of Exclusive U.S. Marshal Inmates



US Marshal inmates averaged 108 per day in June 2011. This represents a 15% increase from the average of 94 per day in May. As US Marshal inmate counts per day may change over time, these data are as of June 30, 2011.



Gender Composition of Bookings

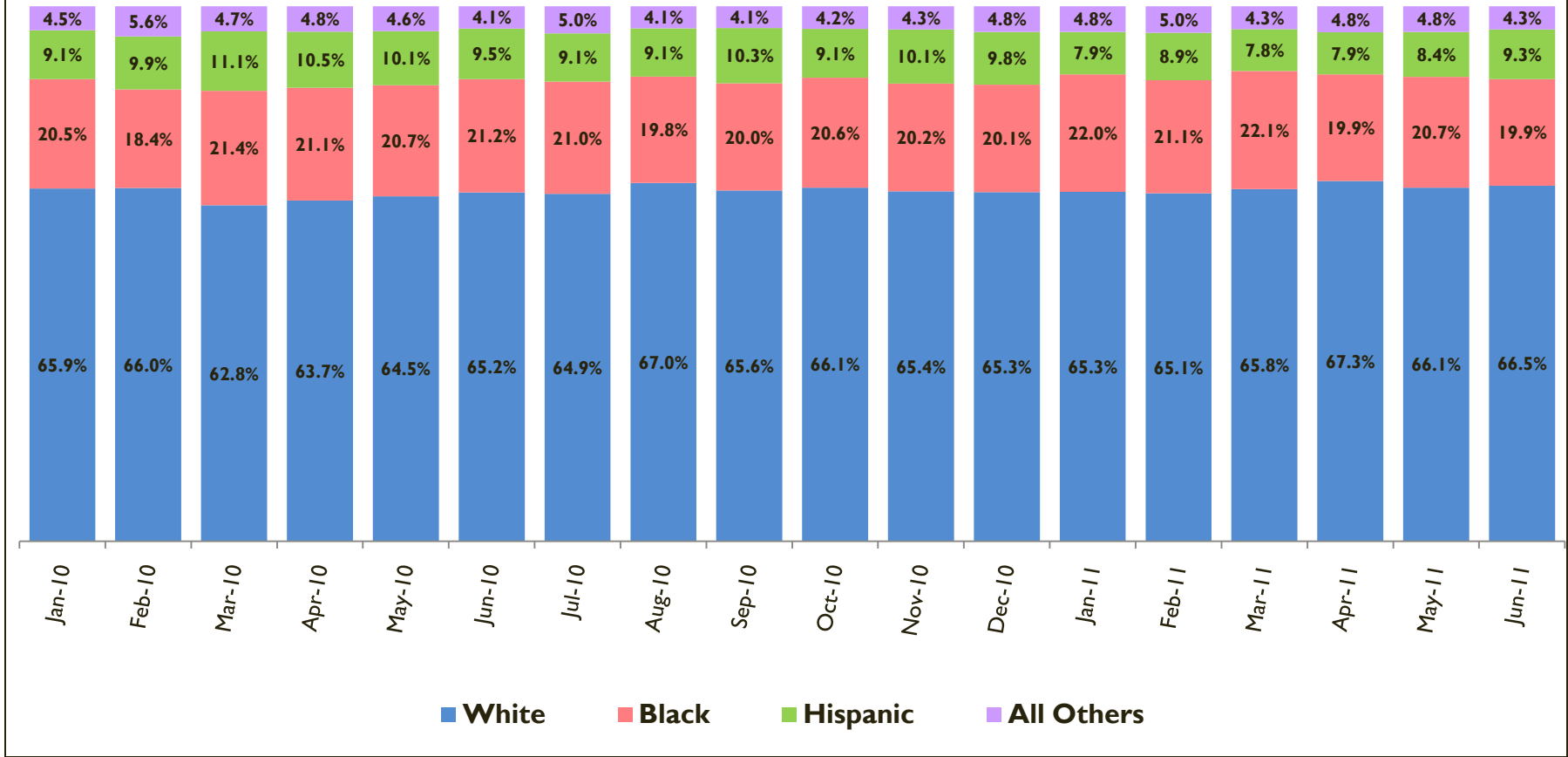


*Includes standard and TSI bookings.

The percent of females and males booked is typically between 18 - 23% and 77 - 82%, respectively.



Ethnic Composition of Bookings

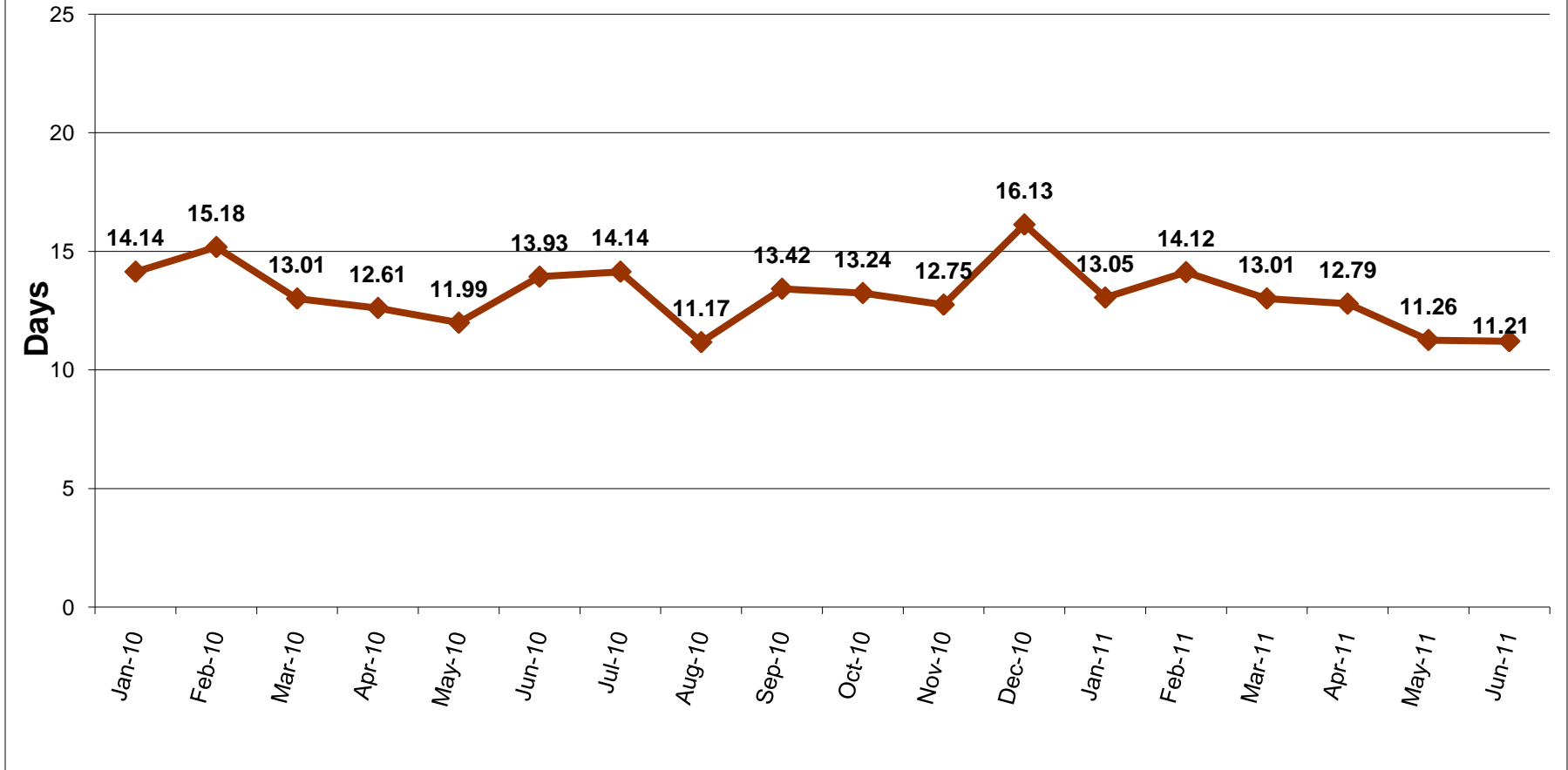


*Includes standard and TSI bookings.

The ethnic composition of bookings is relatively stable month to month. Approximately two-thirds of those booked are White.



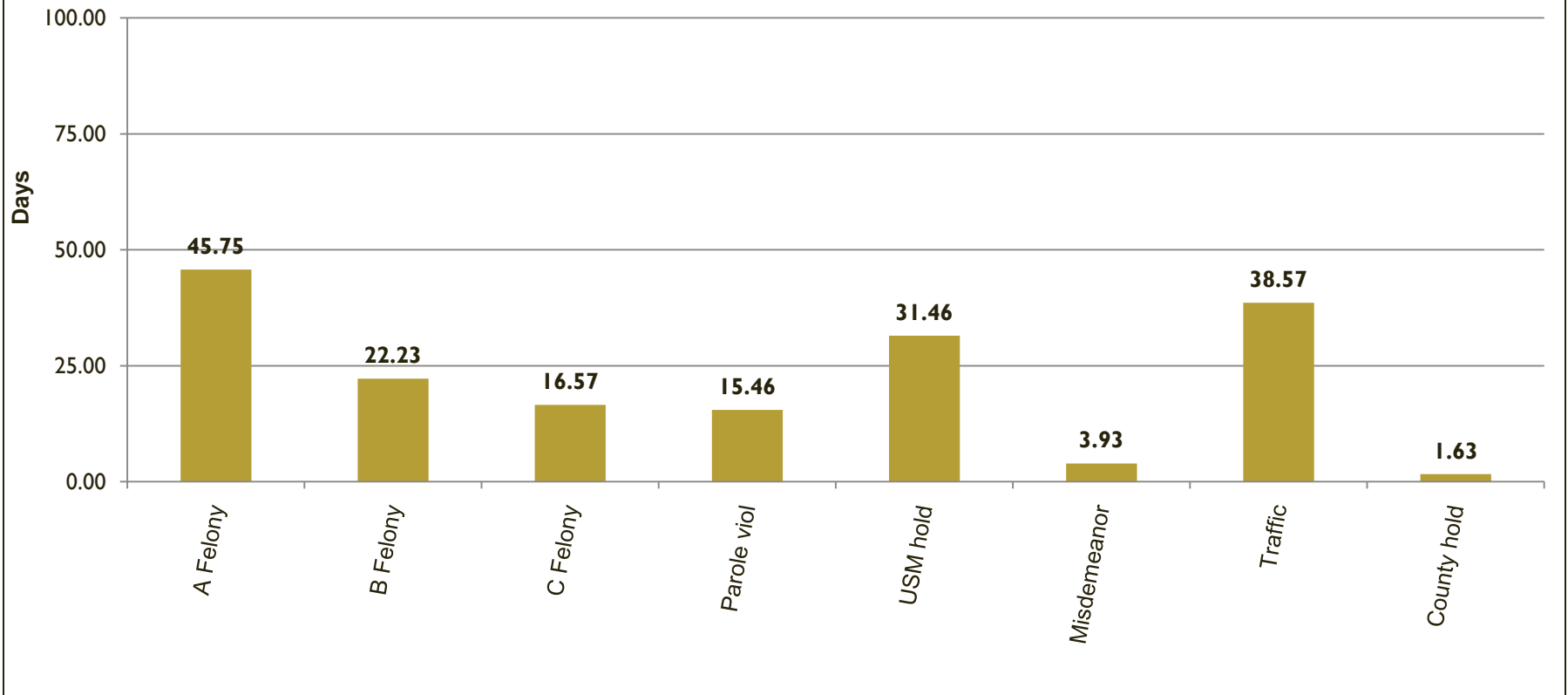
Average Length of Stay (in days)



The average length of stay was 11.21 days for inmates released in June.



Average Length of Stay by Charge Priority (for inmates released during the month)

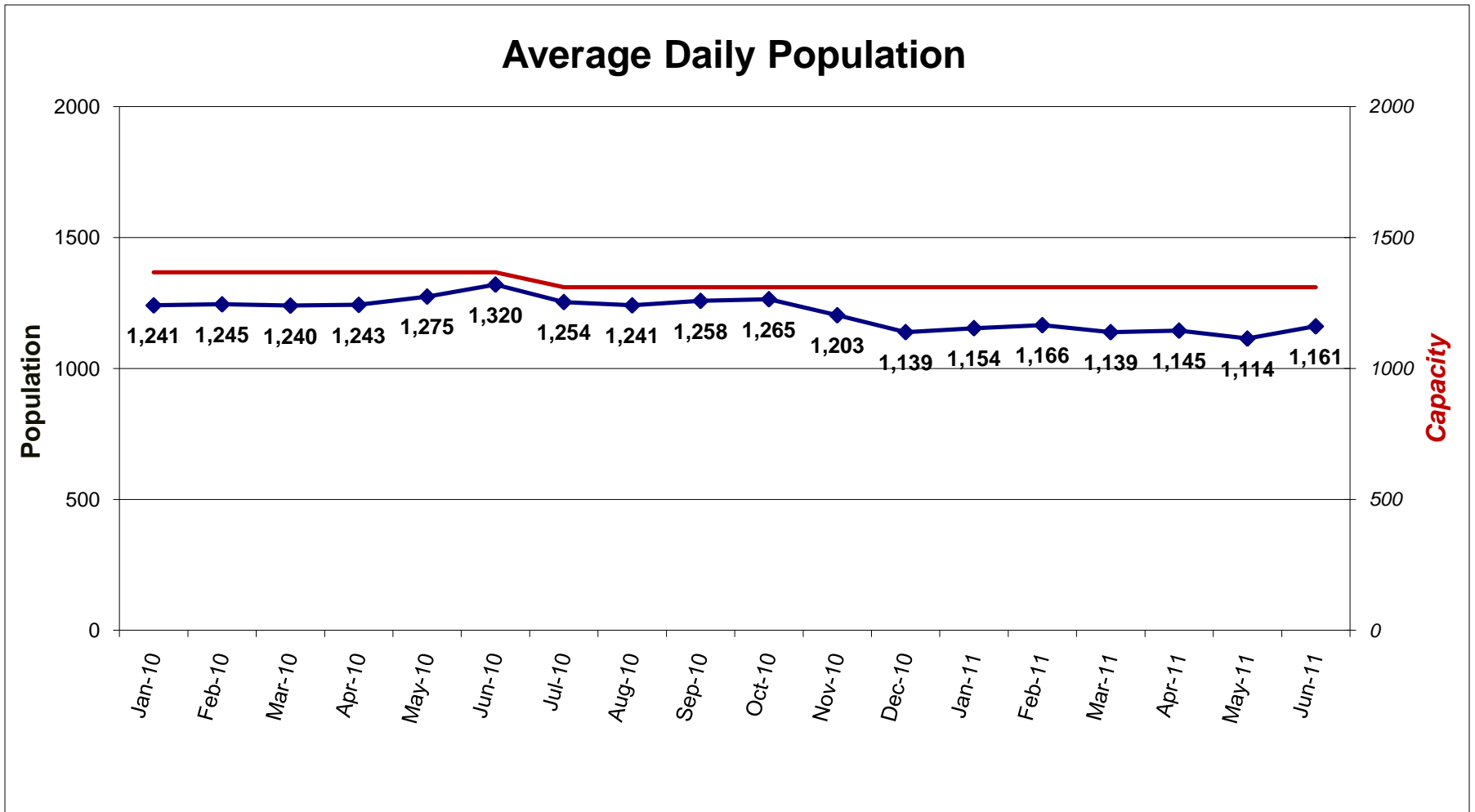


*Data based on primary or most serious charge, regardless of status of the case.

In June 2011, 856 inmates with felony charges were released. They had an average length of stay of 22 days. The 1424 inmates released with misdemeanor charges had an average length of stay of under 4 days.



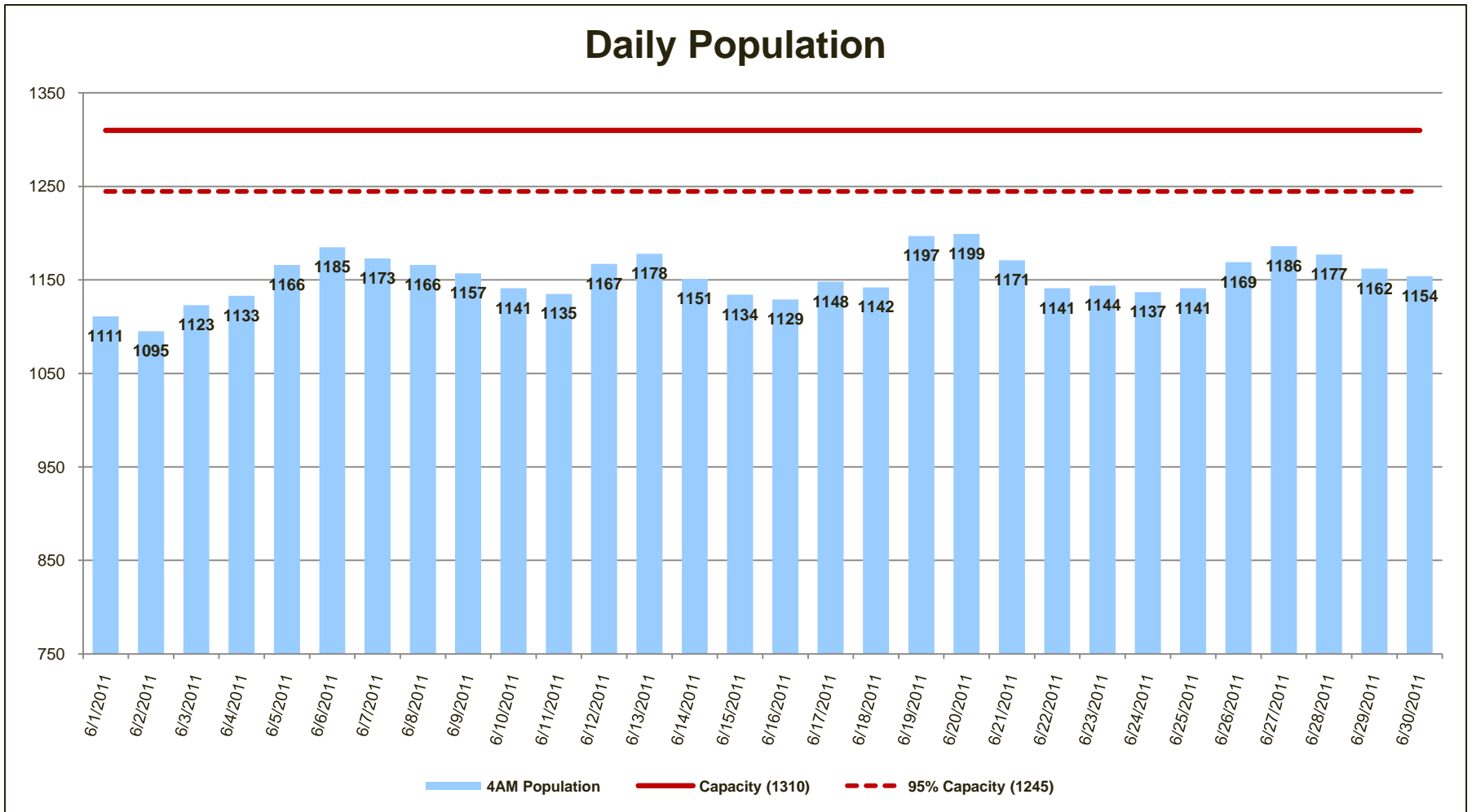
Average Daily Population



On July 1, 2010, the capacity of Multnomah County’s two jail facilities was reduced from 1367 to 1310. The average daily population in June was 1161, which is 89% of capacity.



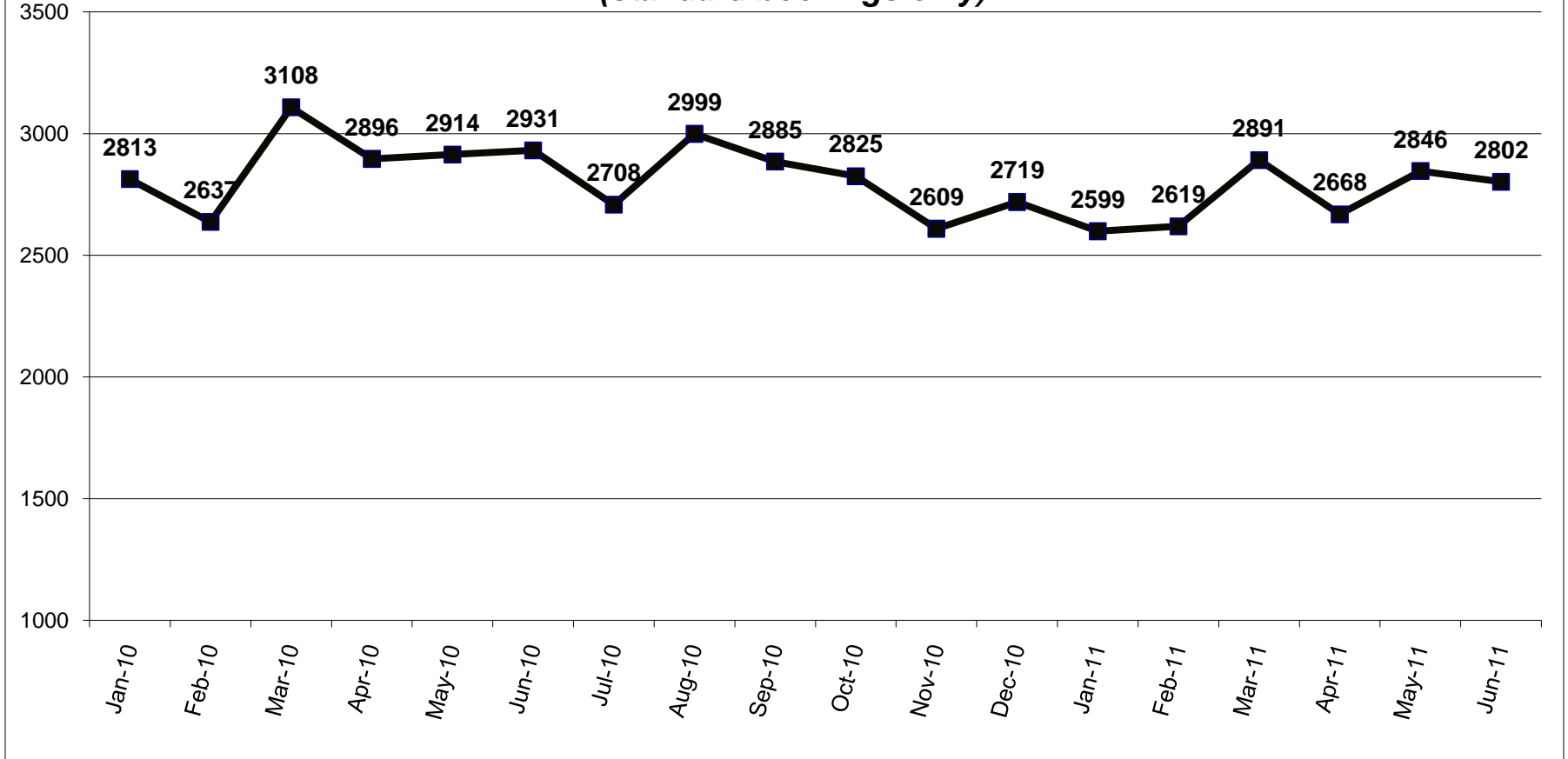
Daily Population



The daily population remained below 95% of budgeted capacity each day in the month of June.



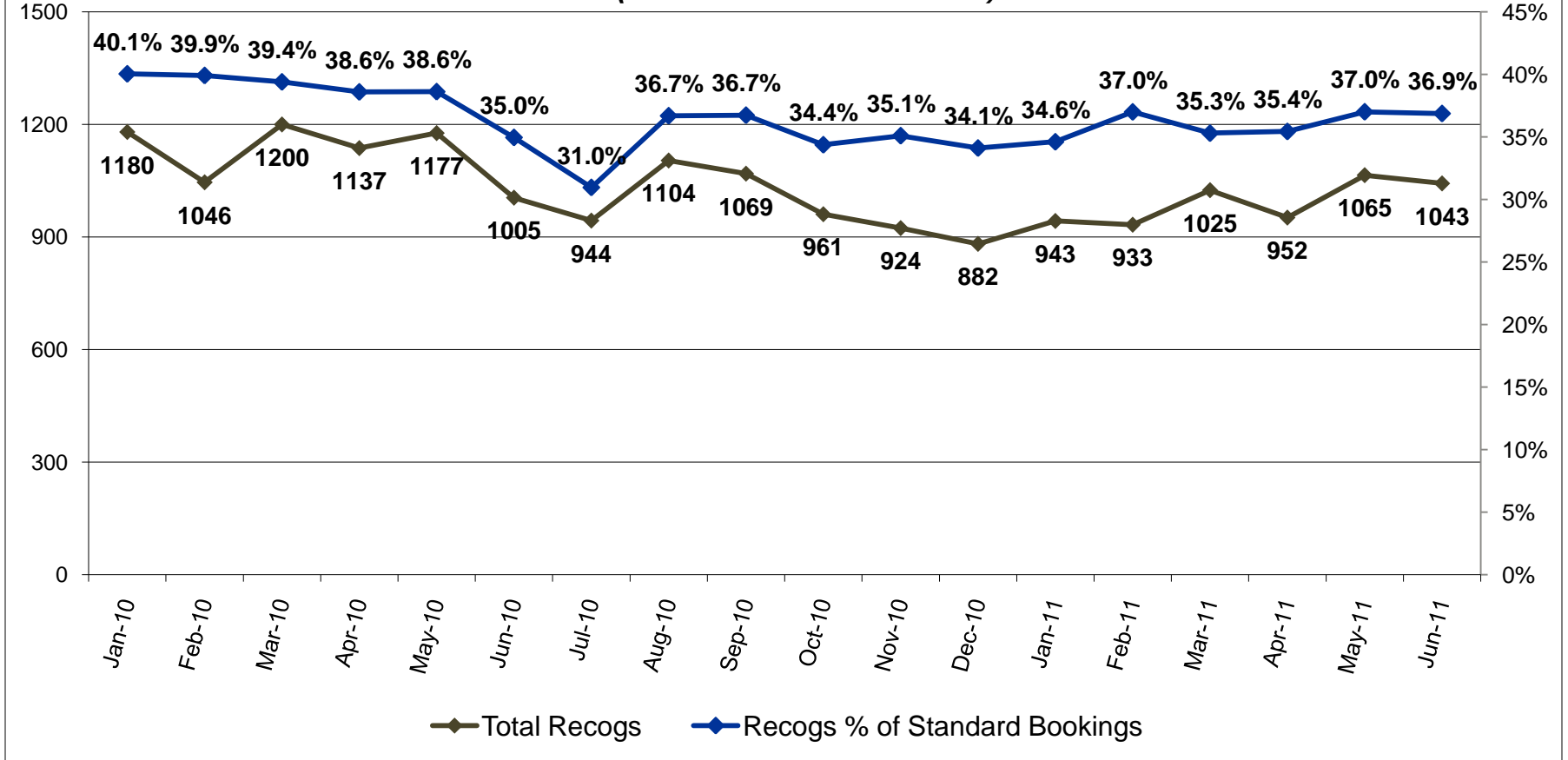
Total Releases (standard bookings only)



Releases per day among standard bookings stayed almost the same between May and June, averaging 92 per day in May and 93 per day in June.



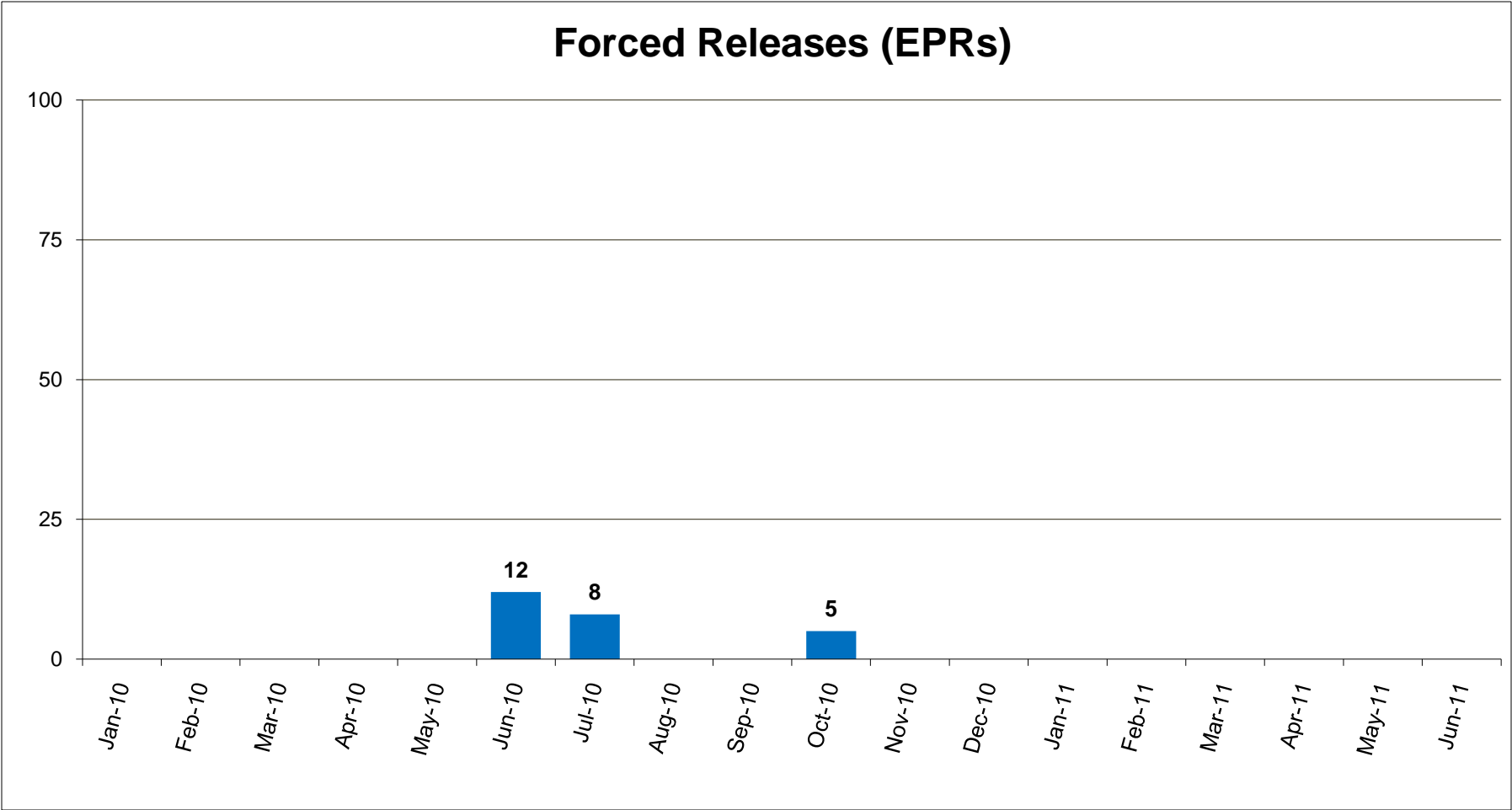
Recognizance Releases (subset of total releases)



Recognizance releases averaged 35 per day in June. The percentage of recognizance releases to standard bookings remained almost the same between May and June.



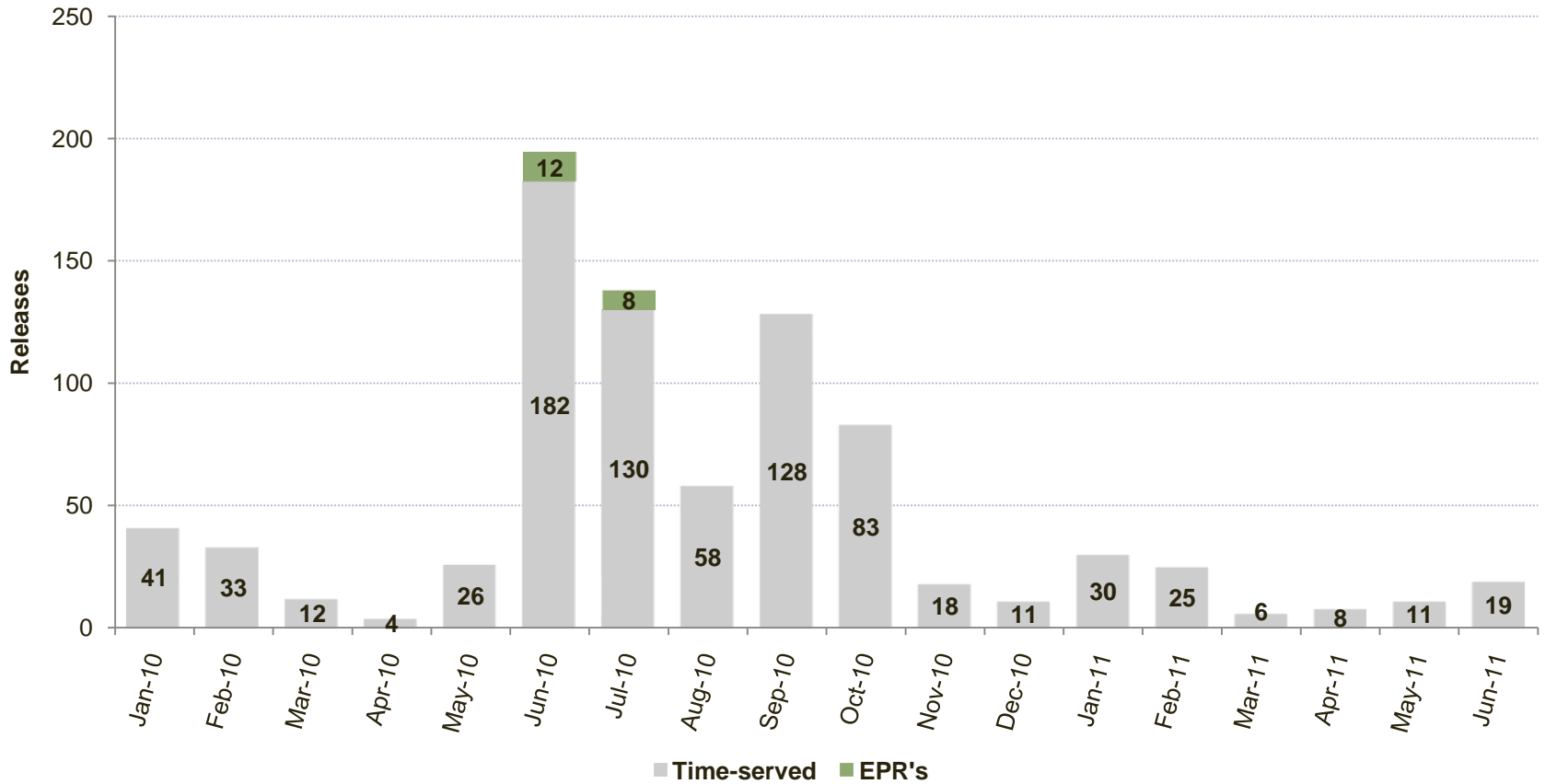
Forced Releases (EPRs)



*Forced releases may occur per Multnomah County Board Resolution 04-135 as part of the jail capacity management plan. There were no forced releases in June 2011.



Releases between 12 AM and 8 AM*

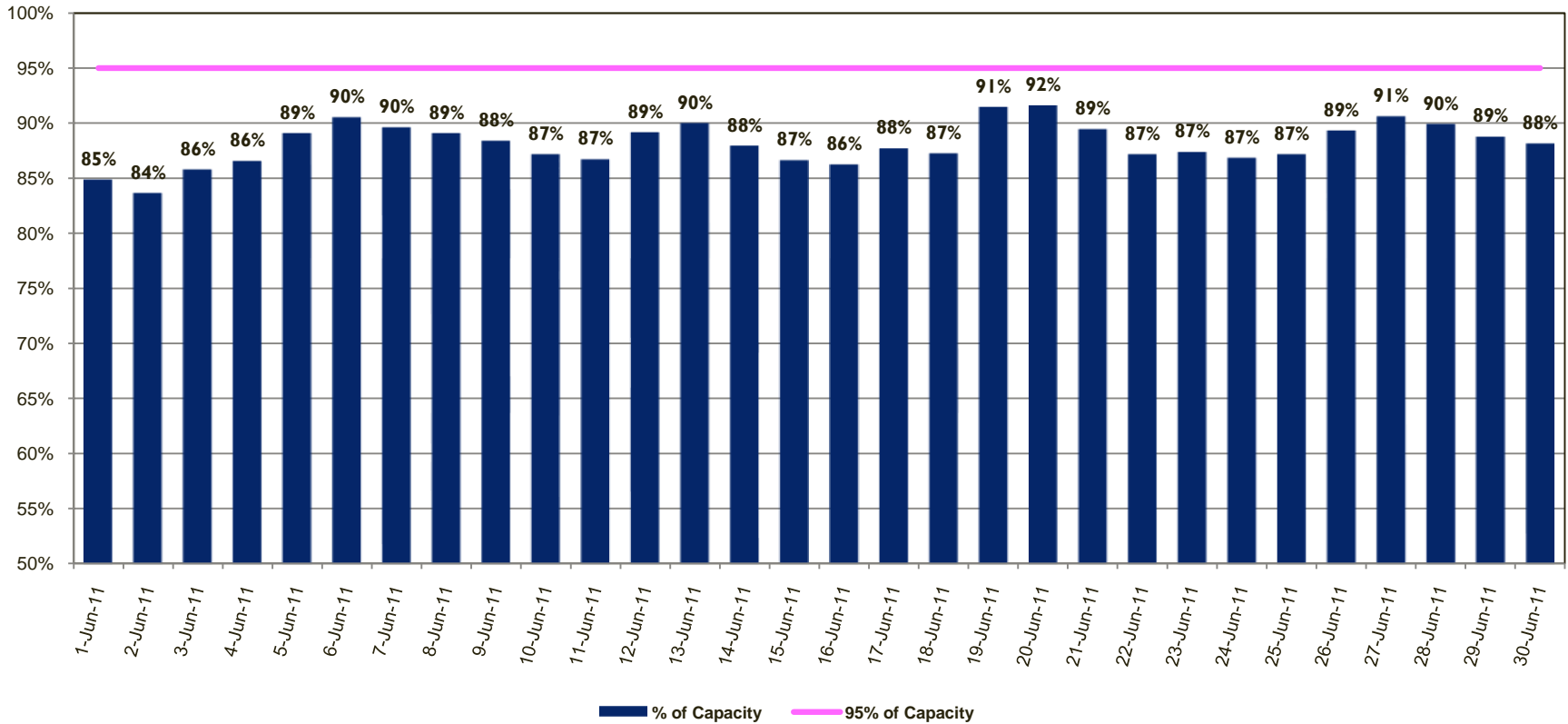


*Non-discretionary court-ordered and recognizance releases are not included.

In June 2011, nineteen time-served inmates were released from jail between the hours of 12AM and 8AM.



Percentage of Capacity by Day*

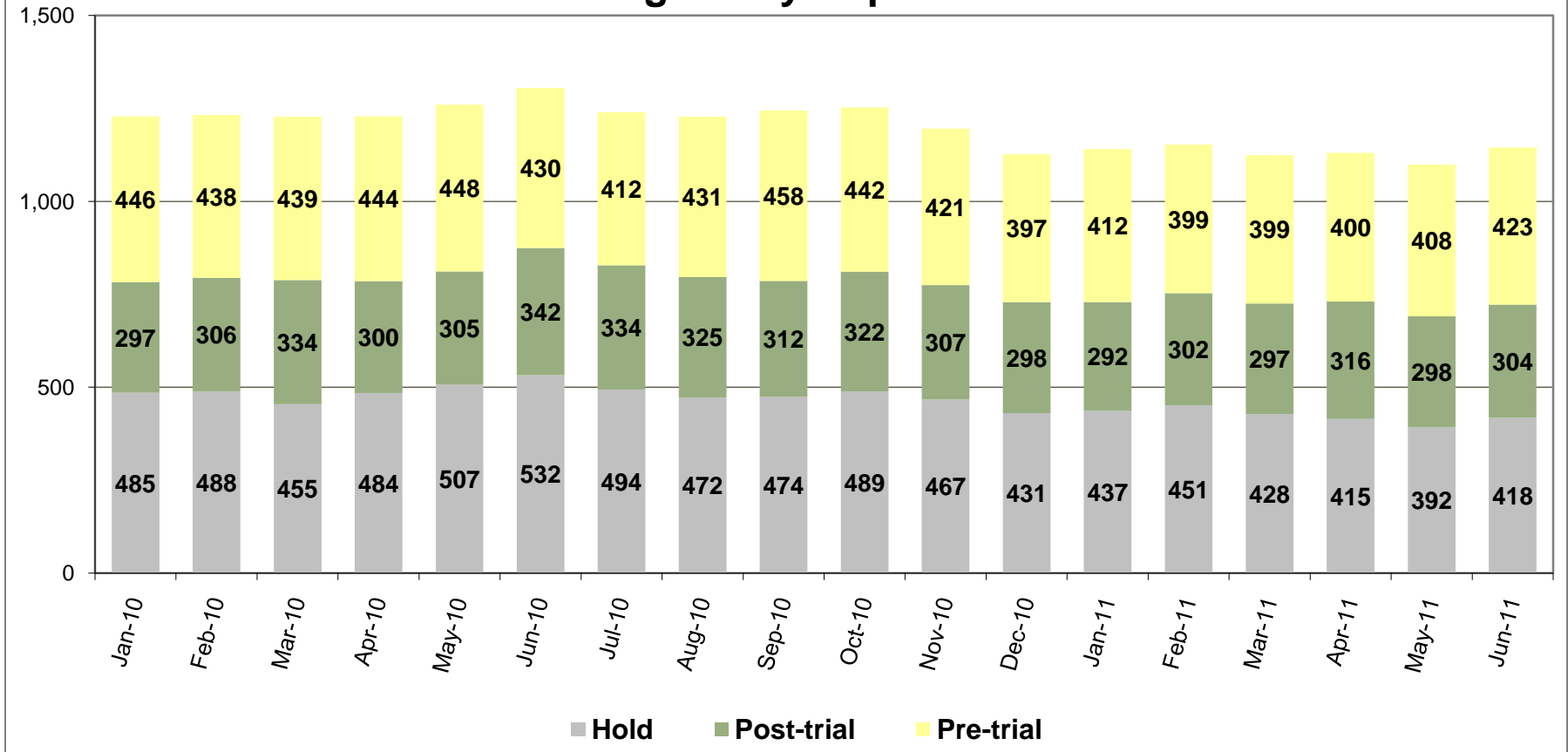


*Red bars indicate days on which EPRs occurred, if any. EPRs do not always or only occur when capacity exceeds the 95% threshold. Efforts are made to balance the population to the demands of the classification system for specific types of jail beds and balance the space needs for male or female inmates. Additionally, jail capacity varies throughout the day. These capacity calculations are based on 4 AM population counts.

On September 23, 2010, the Multnomah County Board of Commissioners adopted Resolution No. 2010-141 whereby if the number of inmates housed within the Multnomah County jail system reaches 95% of the population limit, a county jail population emergency will exist.



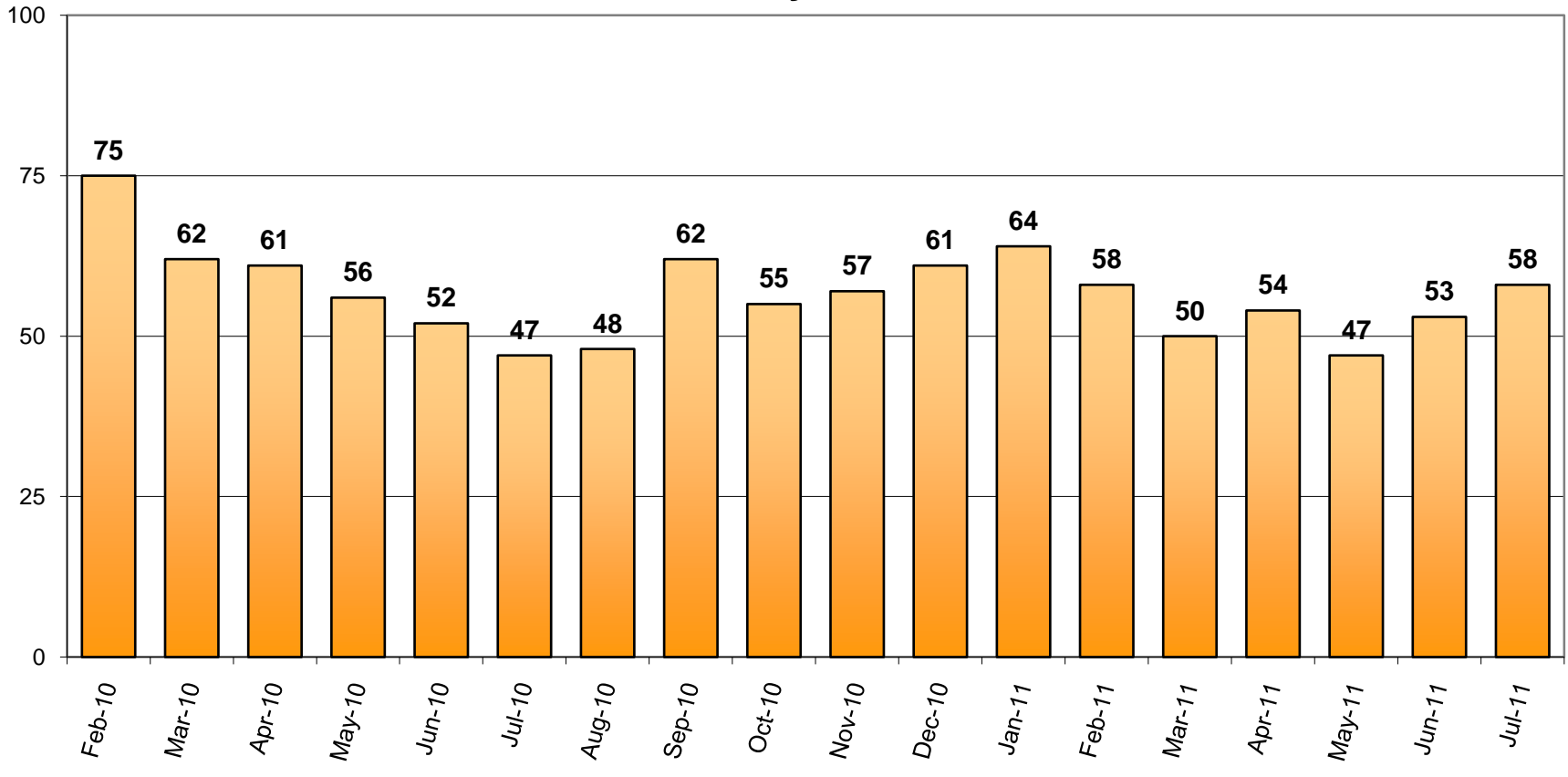
Pre-Trial vs. Post-Trial vs. Holds in Custody Average Daily Population



The average number of inmates jailed on holds, post-trial, and pre-trial all increased between May and June.



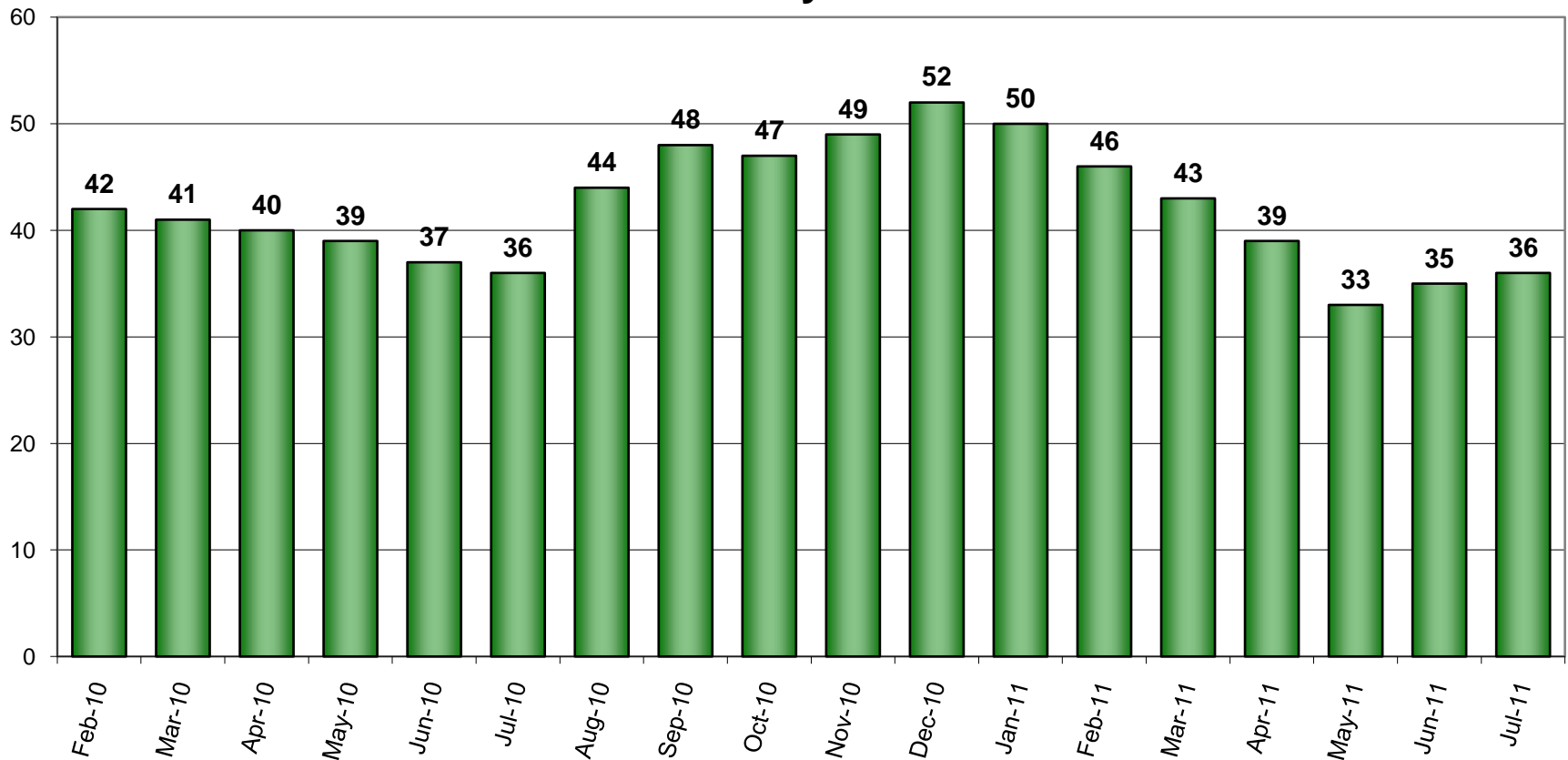
Count of Persons Held Pre-trial more than 150 Days on First Day of Month



The number of inmates jailed pre-trial more than 150 days was 58 on July 1, 2011.



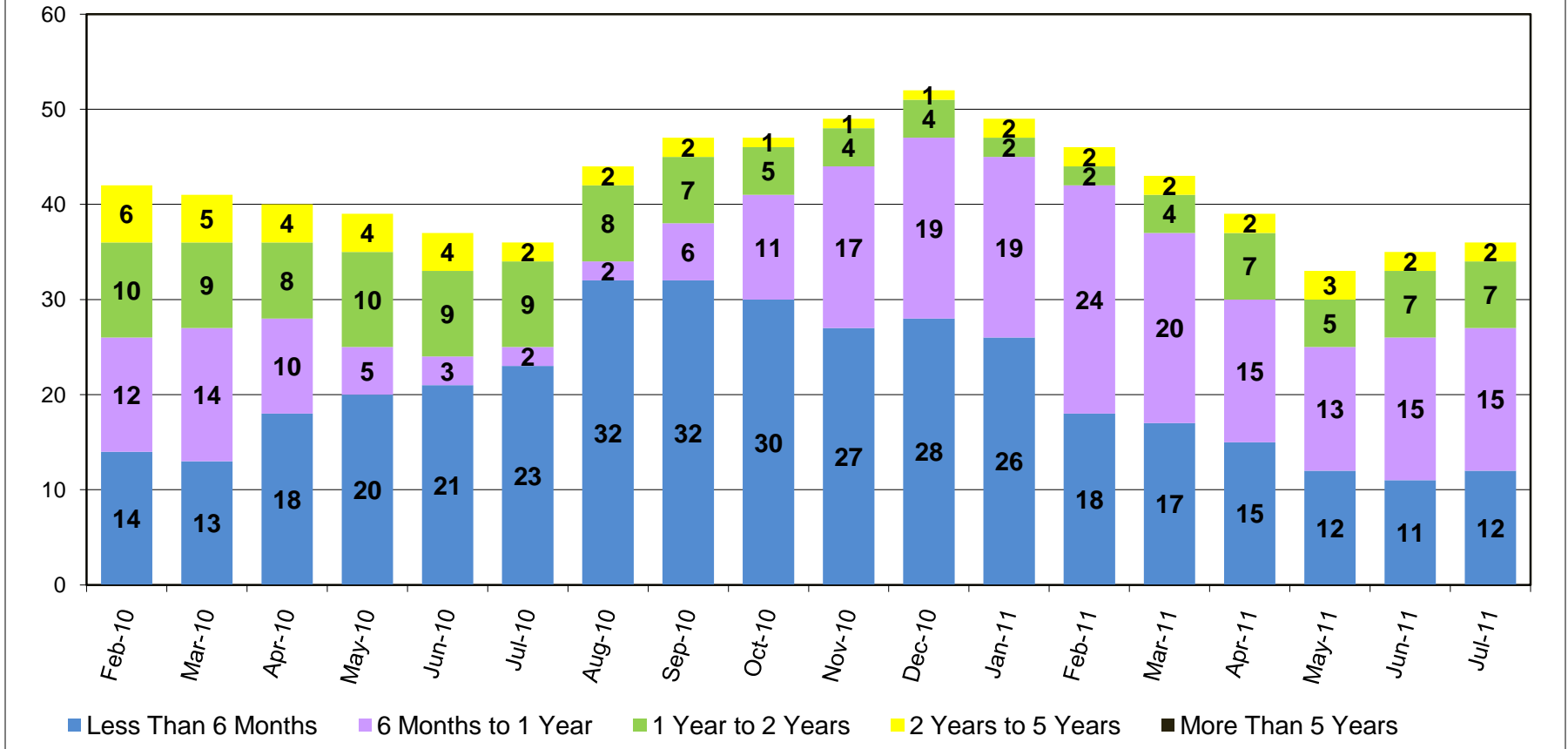
Count of Persons Held Pre-trial on Murder Related Charges on First Day of Month



On July 1, 2011, a total of 36 inmates accused of murder were being held pre-trial.



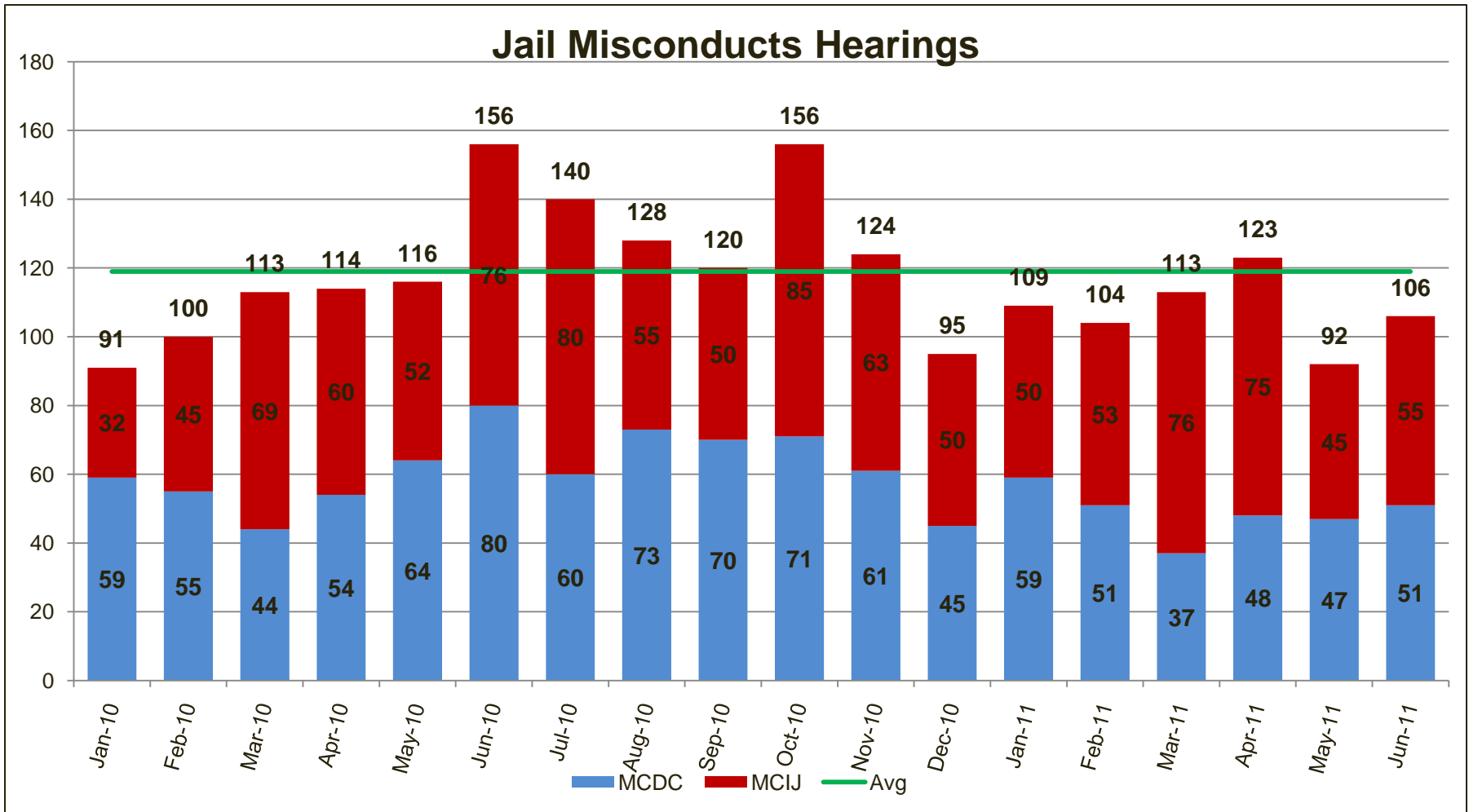
Count of Pre-trial persons with Murder Related Charges by Length of Stay on First Day of Month



As of July 1, 2011, there were nine inmates accused of murder and held pre-trial in jail for longer than one year.



Jail Misconducts Hearings



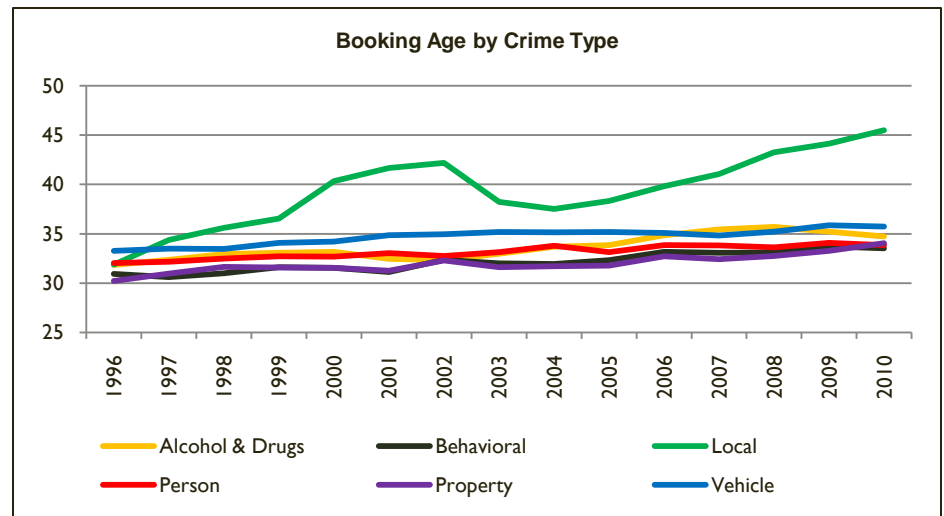
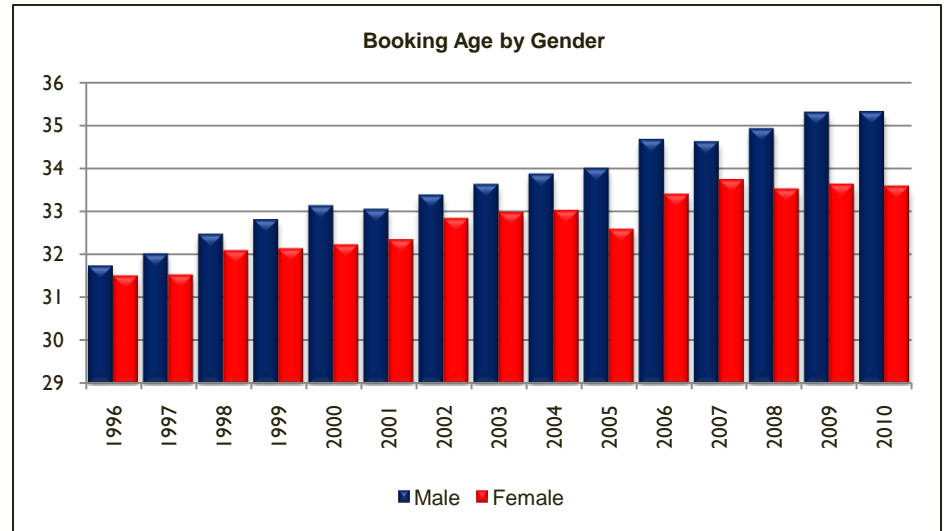
Tracking the number of misconduct hearings of inmates informs jail management on classification, housing, and other operational issues.



Special Analysis: Age at Booking

Looking at 15 years of data, the average age at the time of booking increased steadily between 1996 and 2009, where it has remained through 2010. Since 1996, the average age at booking has increased by 3 years. The average age of males booked into custody increased from 32 to 35, while females increased from 31 to 34 years of age.

Bookings for all crime types experienced relatively the same 3 year increase in booking age with the exception of Local crimes. The average age for persons booked for Local crimes increased by 13 years, from 32 to 45 years of age, between 1996 and 2010. Most of these Local crimes (88%) are unclassified misdemeanors and ordinance violations such as those dealing with the public consumption of alcohol. Many of these charges are only bookable if the offender failed to appear in court or had additional charges. Over the 15 year period, Local charges comprised only 3% of all bookings therefore having little impact on the overall age averages.



Emergency Population Release Appendix: Detailed Info on Monthly Forced Releases



No forced releases occurred during June 2011.

See previous reports for detailed information on monthly forced releases.

