

# **MULTNOMAH COUNTY SHERIFF'S OFFICE**

## **Monthly Jail Report, February 2011**



*Multnomah County Sheriff's Office - Dan Staton, Sheriff*  
*501 SE Hawthorne Blvd., Suite 350 Portland OR 97214*  
*503-988-4300 (TTY 503-988-4500) [www.mcso.us](http://www.mcso.us)*

# ***Welcome to the Multnomah County Sheriff's Office Monthly Jail Report!***

This report is a monthly publication of MCSO's Resource Analysis Unit. We are eager to hear any suggestions or feedback you may have. Please feel free to contact any one of us in the RAU:

David Braaksma  
Markley Drake  
Wendy Lin-Kelly  
Lt. Jeff Wheeler

503-988-4300

## ***February Summary (and reference page):***

Standard bookings: 2521 (p. 3)

Average Length of Stay: 14.12 days (p. 8)

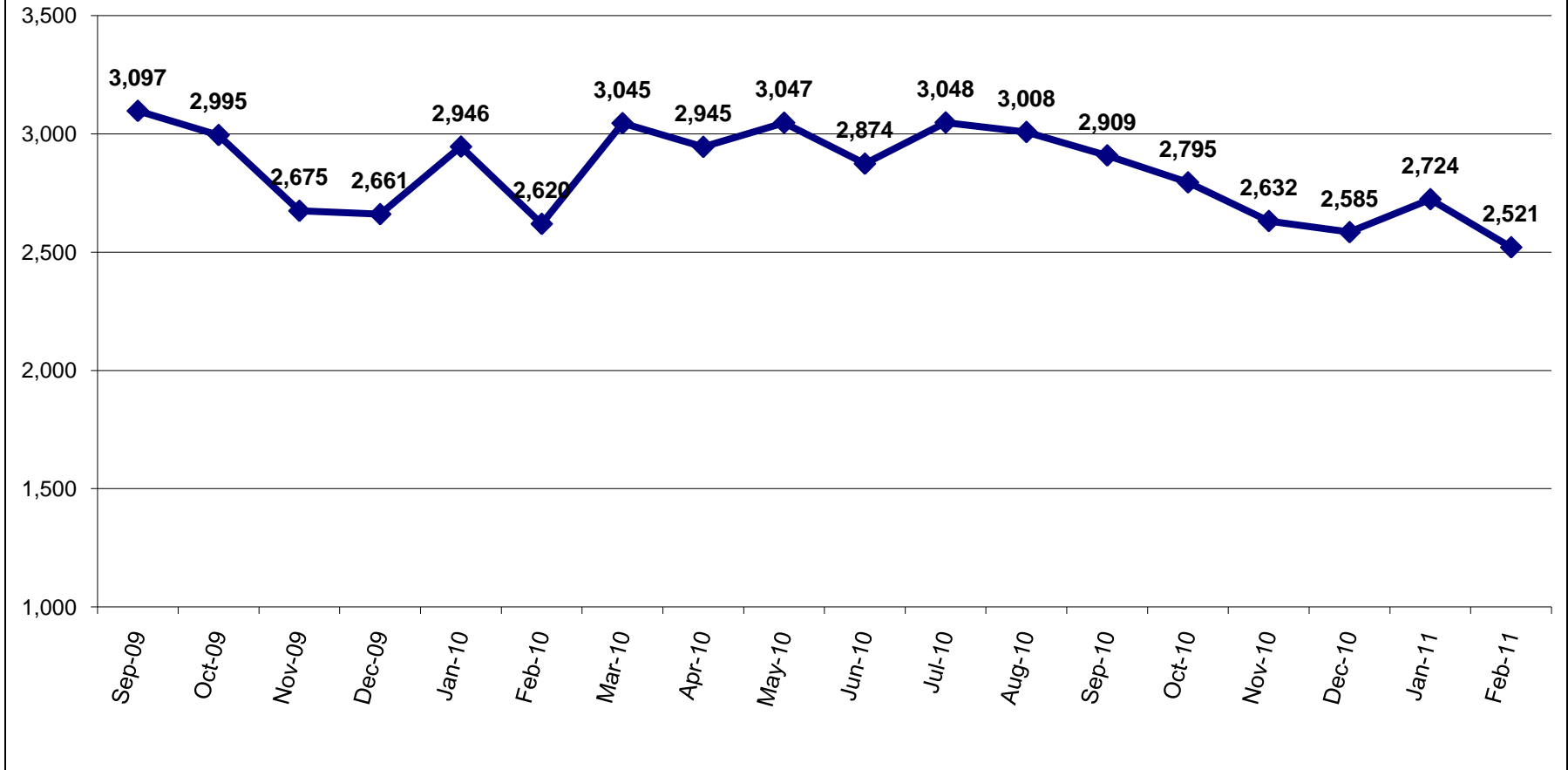
Capacity: 1310 beds (p. 10)

Average Daily Population: 1166, 89% of capacity (p. 10)

Forced Releases (Emergency Population Releases): 0 (p. 14)



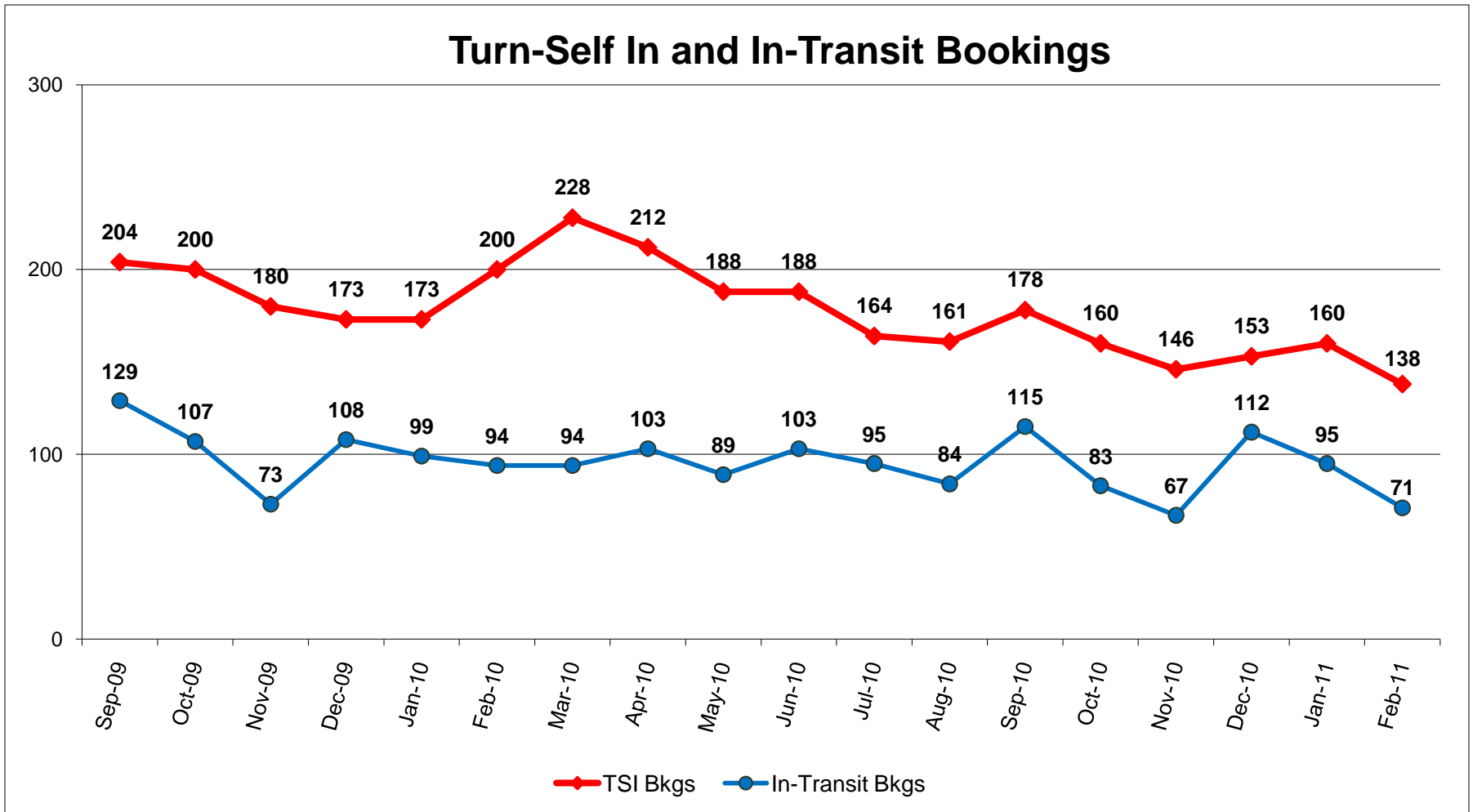
# Standard Bookings



Standard bookings totaled 2521 in February 2011, averaging 90 bookings per day.



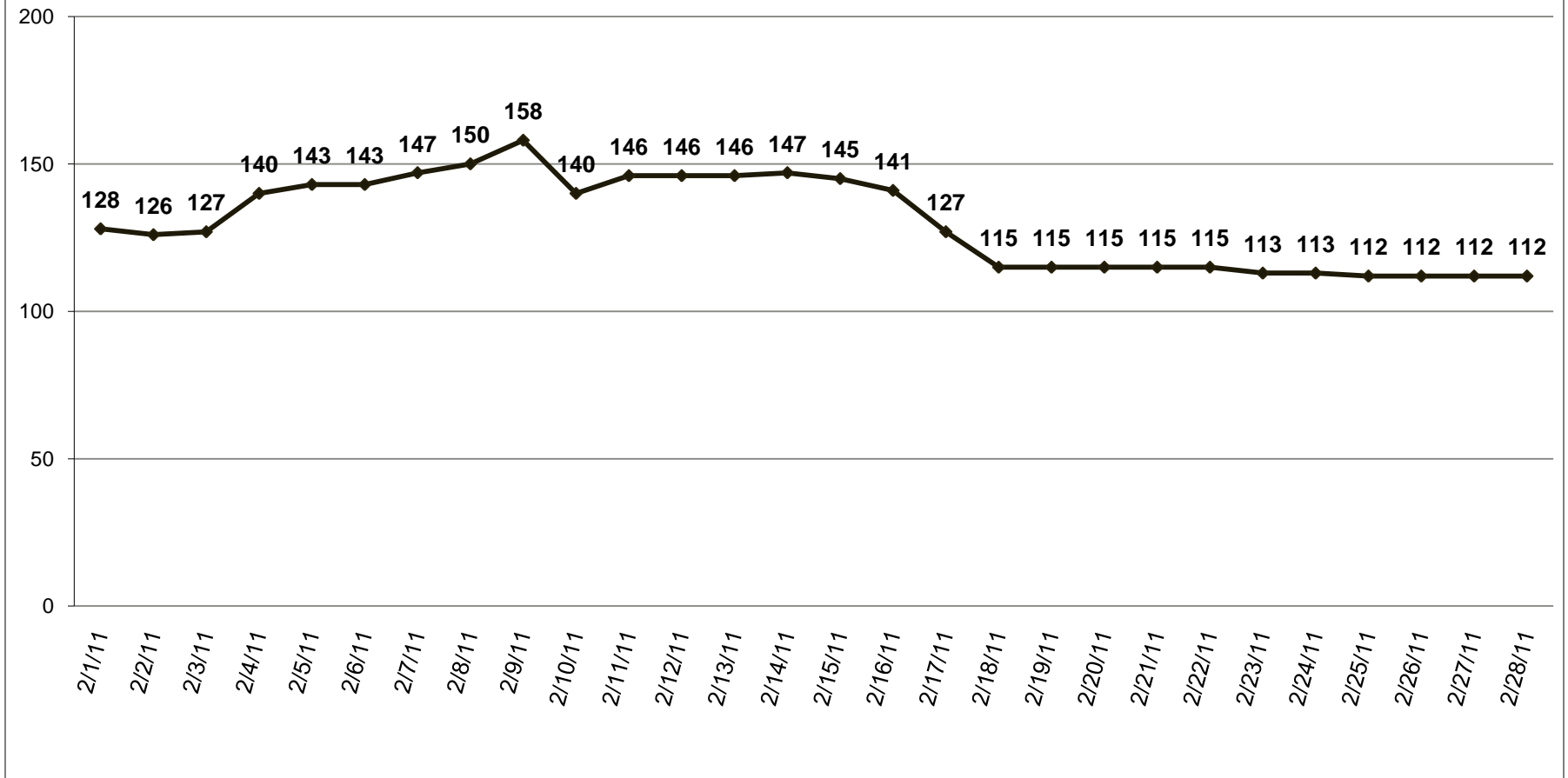
## Turn-Self In and In-Transit Bookings



Turn-Self In (TSI) bookings are where an offender has been sentenced and ordered to return to jail at a later date. In-Transit bookings are of those being held for other jurisdictions while being transported. The number of In-Transit and TSI bookings both decreased between January and February.



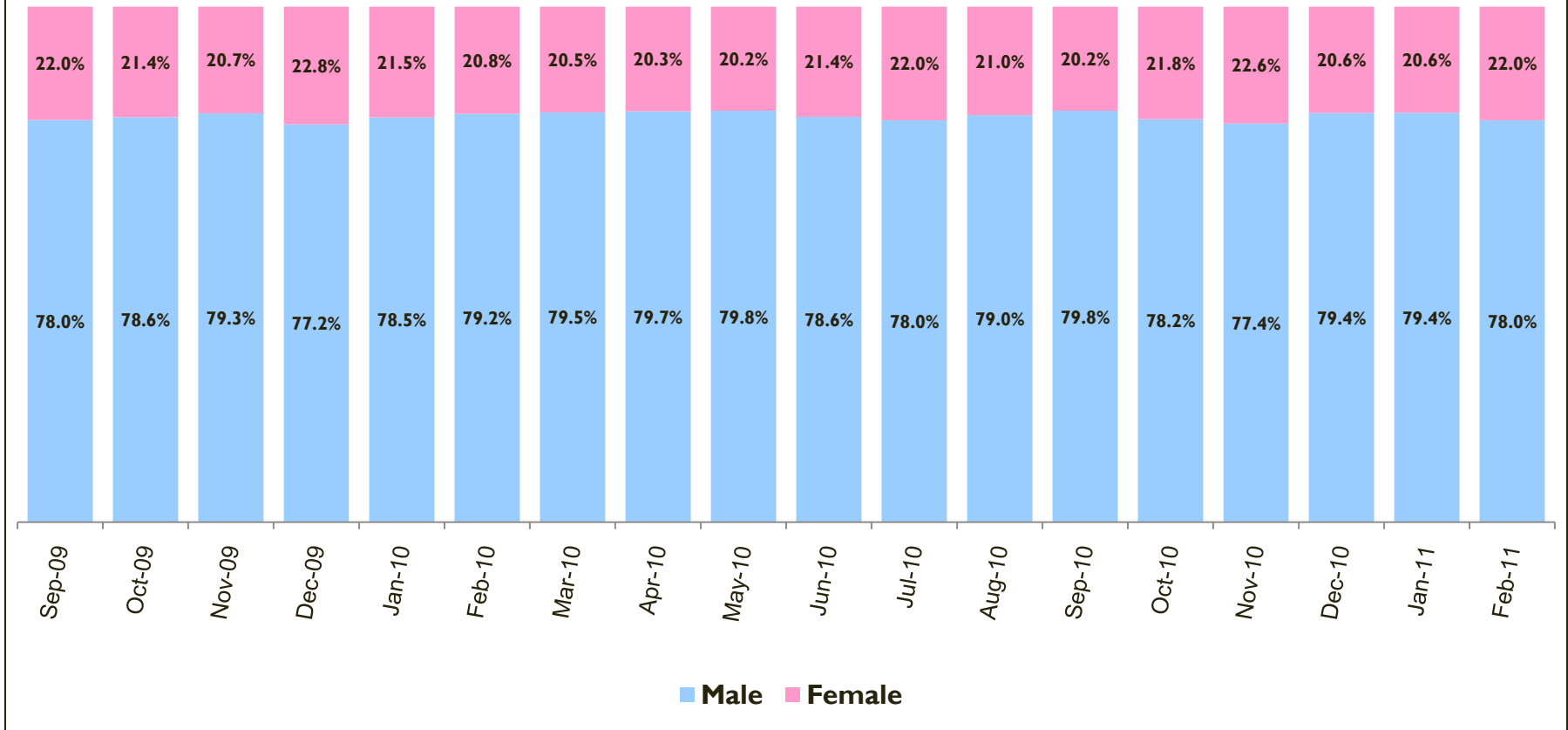
## Daily Count of Exclusive U.S. Marshal Inmates



US Marshal inmates averaged of 130 per day in February 2011. As US Marshal inmate counts per day may change over time, these data are as of March 7, 2011.



## Gender Composition of Bookings

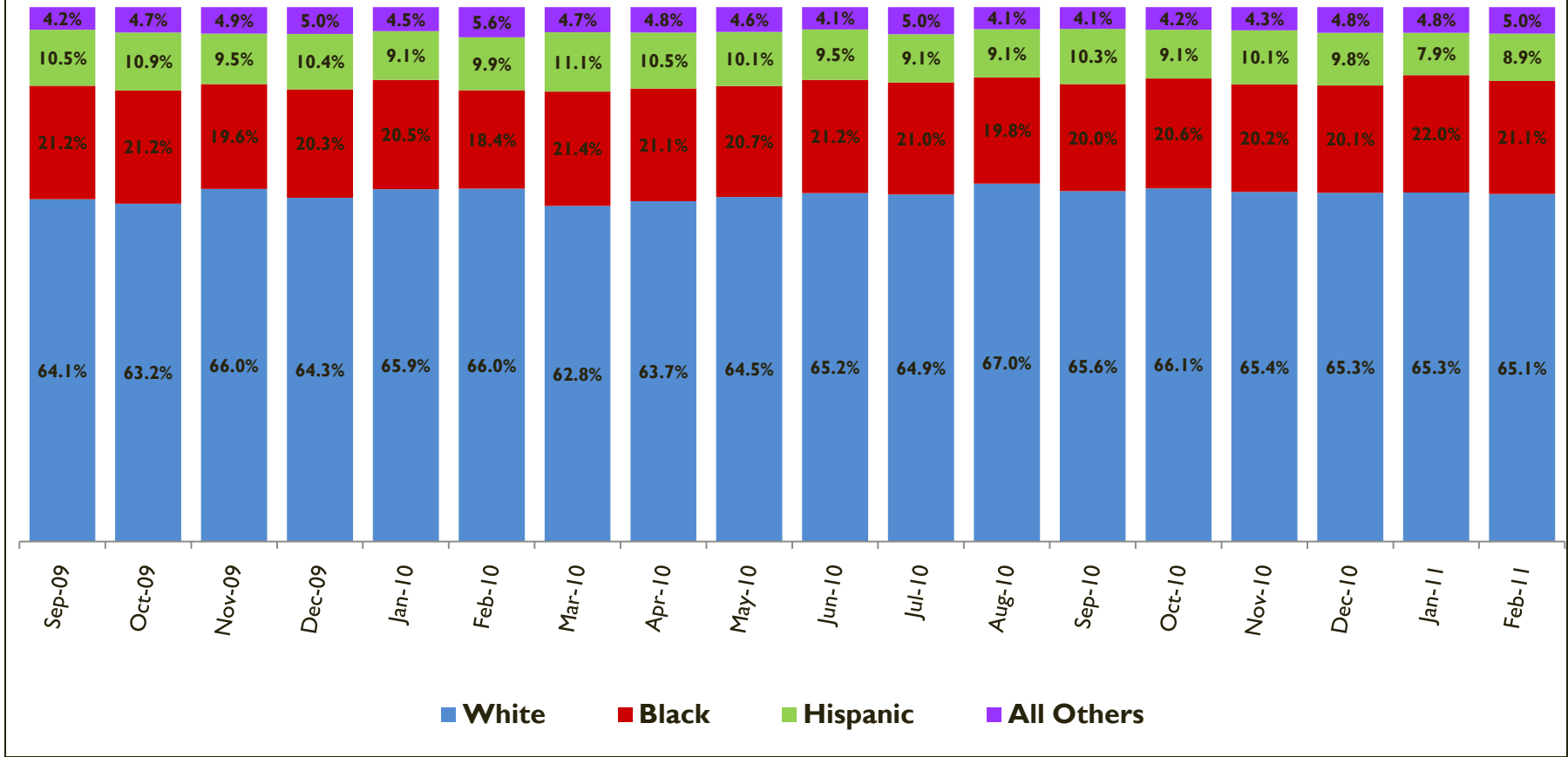


\*Includes standard and TSI bookings.

The percent of females and males booked is typically between 18 - 22% and 78 - 82%, respectively.



# Ethnic Composition of Bookings

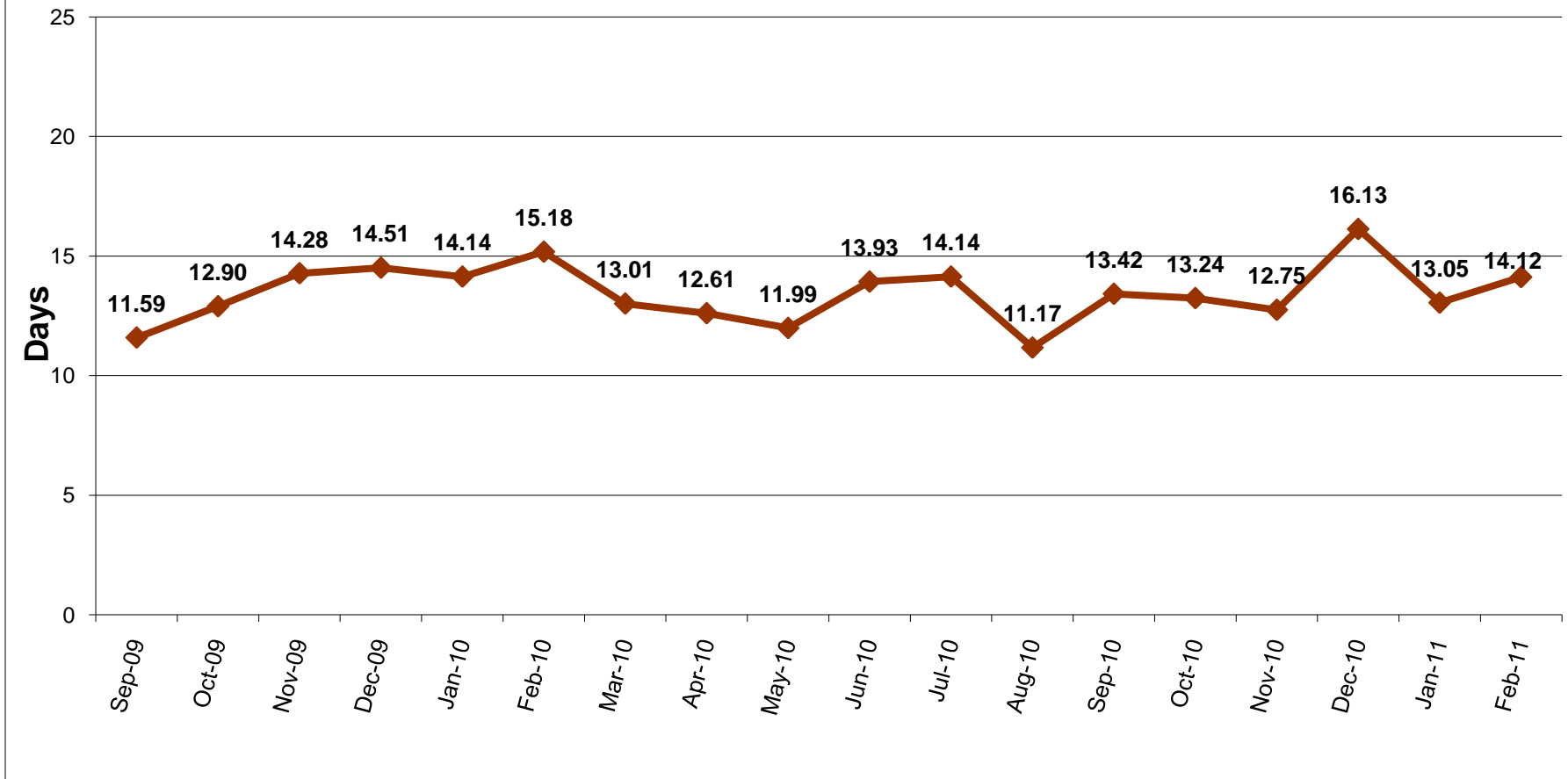


\*Includes standard and TSI bookings.

The ethnic composition of bookings is relatively stable month to month. Approximately two-thirds of those booked are White.



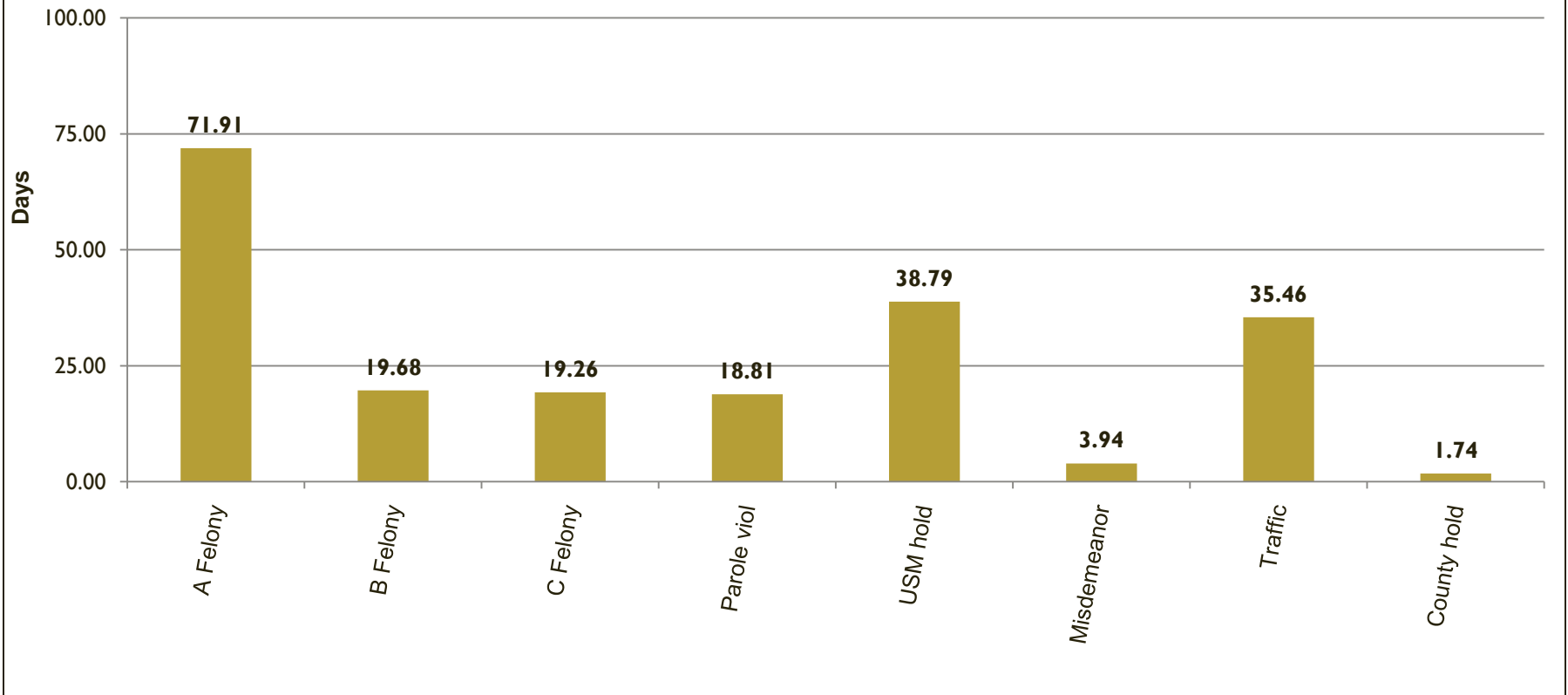
## Average Length of Stay (in days)



The average length of stay was 14.12 days for inmates released in February.



## Average Length of Stay by Charge Priority (for inmates released during the month)

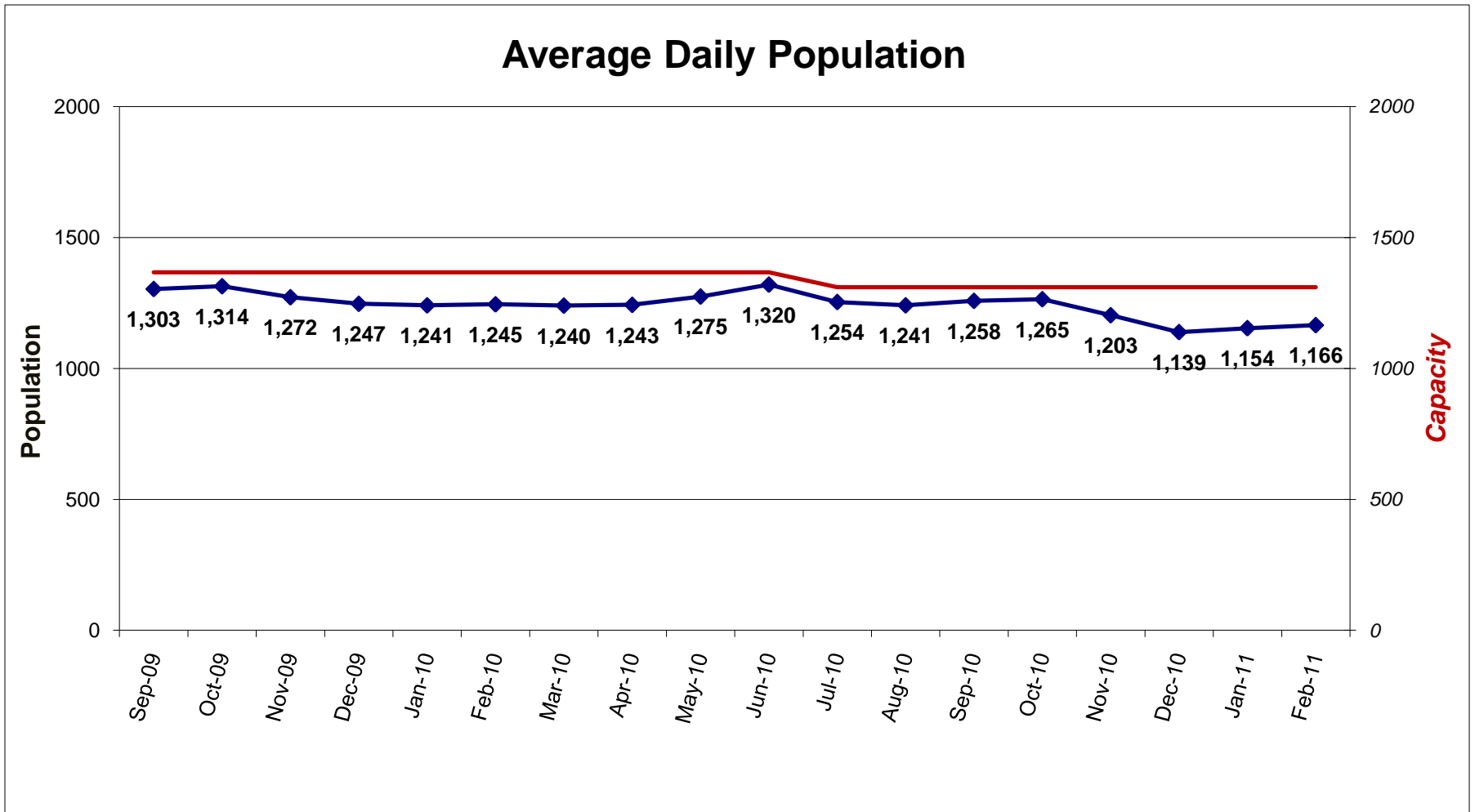


\*Data based on primary or most serious charge, regardless of status of the case.

In February 2011, 819 inmates with felony charges were released. They had an average length of stay of 27 days. The 1253 inmates released with misdemeanor charges had an average length of stay of under 4 days.



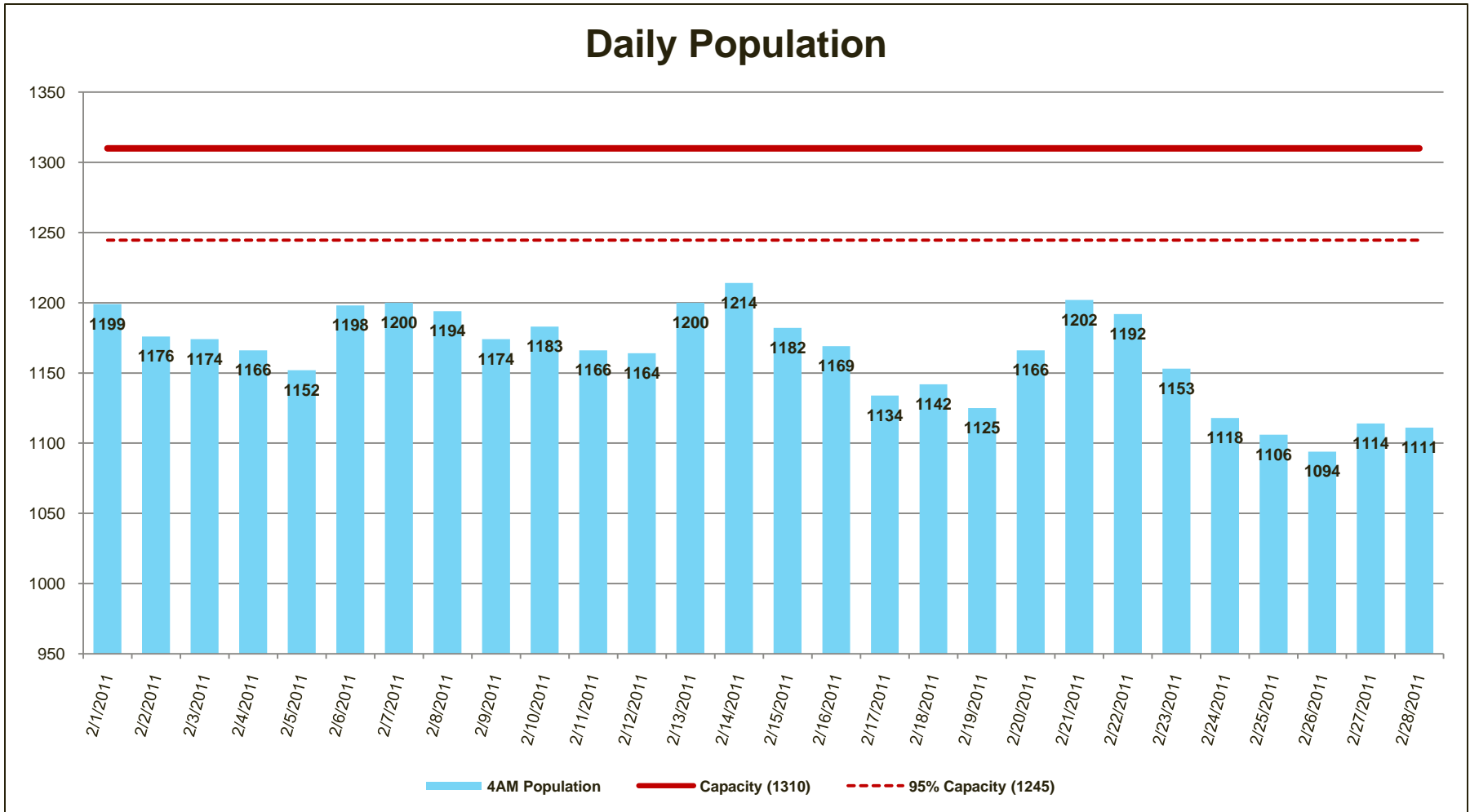
# Average Daily Population



On July 1, 2010, the capacity of Multnomah County's two jail facilities was reduced from 1367 to 1310. The average daily population in February was 1166, which is 89.0% of capacity.



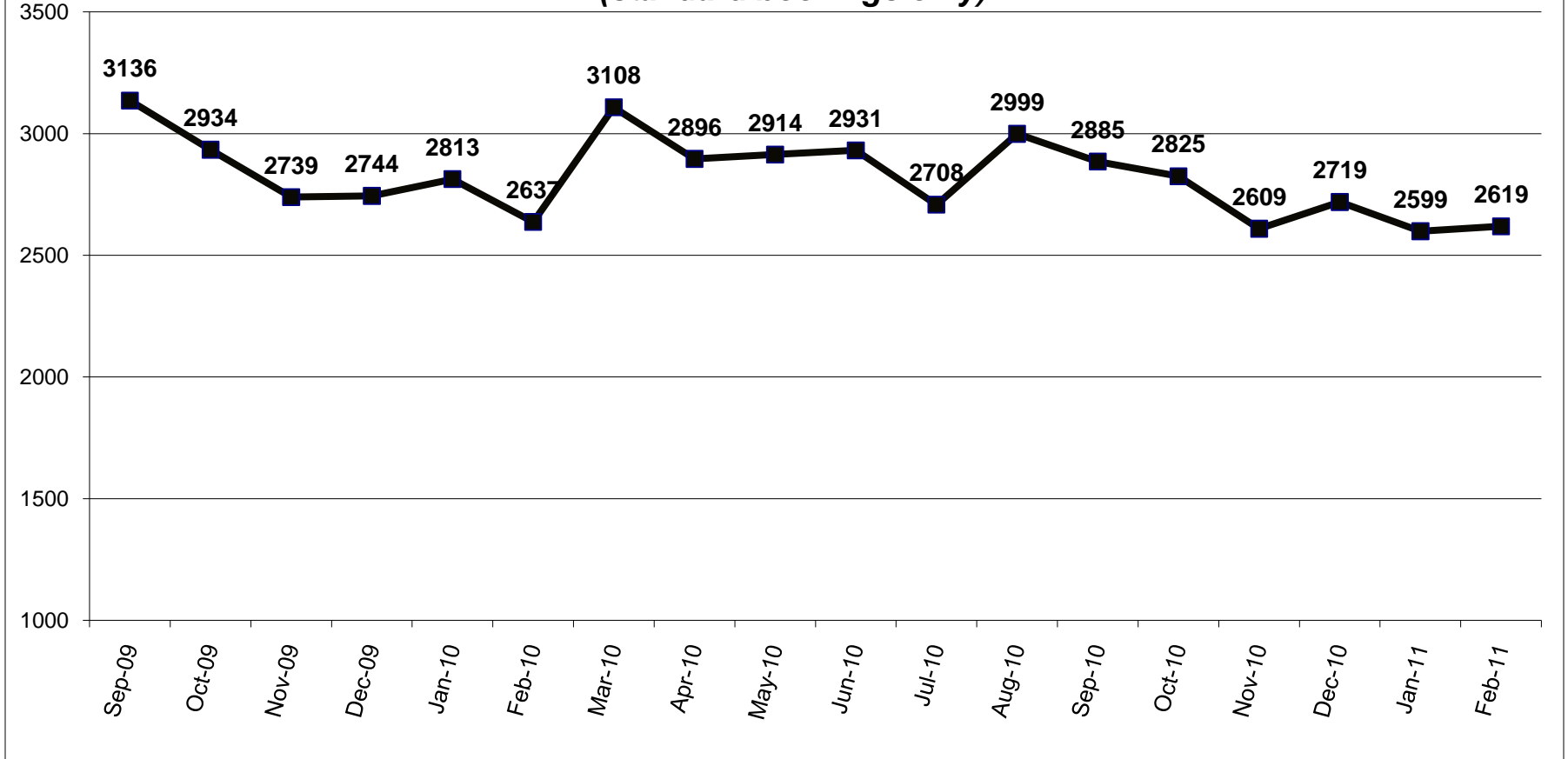
# Daily Population



On September 17, 2010, the MCIJ Jail Commander issued Special Order 10-29 which established a process whereby Dorm 3, with 57 beds, could be opened to avoid conducting Emergency Population Releases. It was not necessary to open Dorm 3 in February 2011.



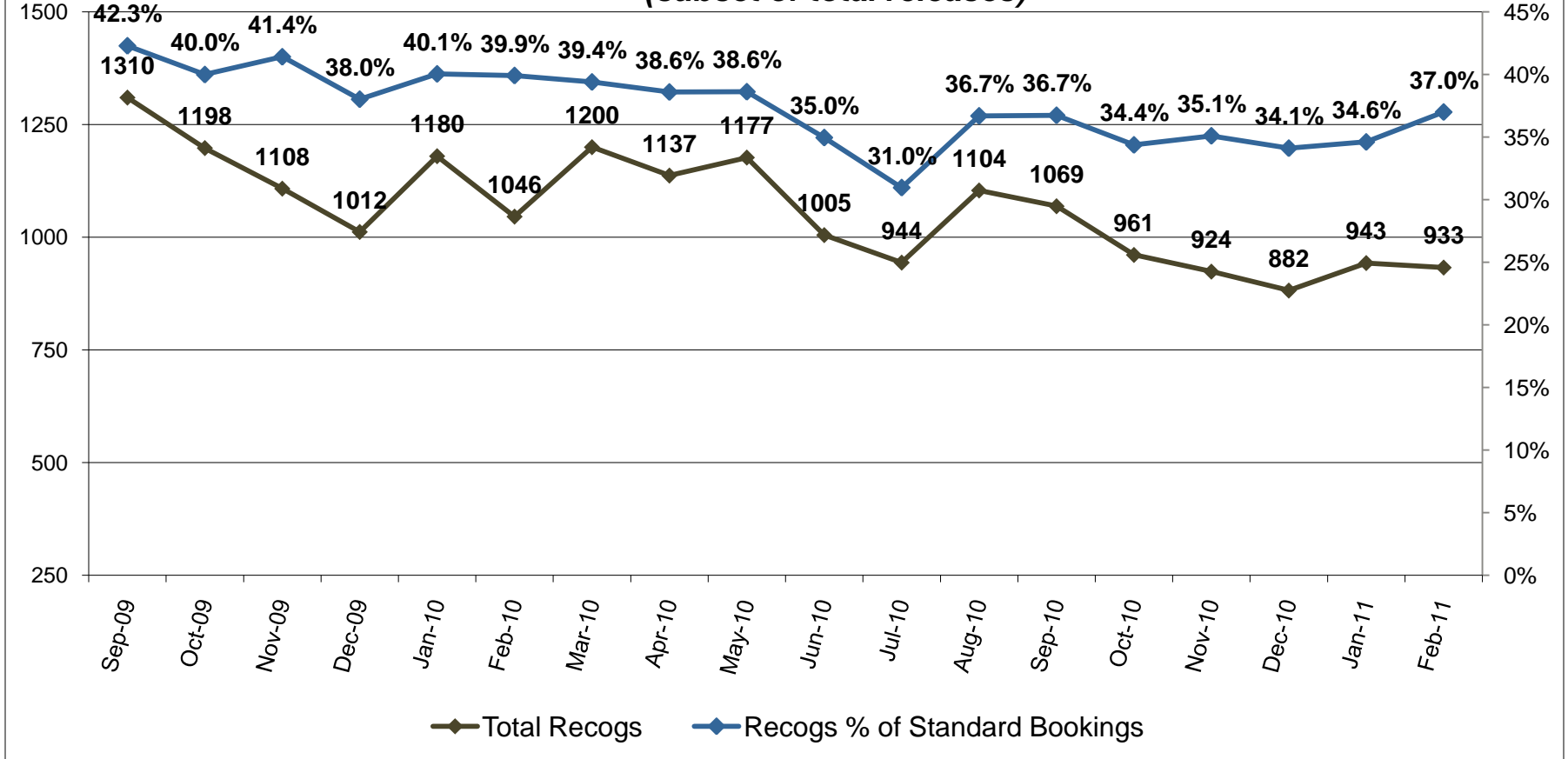
## Total Releases (standard bookings only)



Releases among standard bookings increased from an average of 84 per day in January to an average of 94 per day in February.



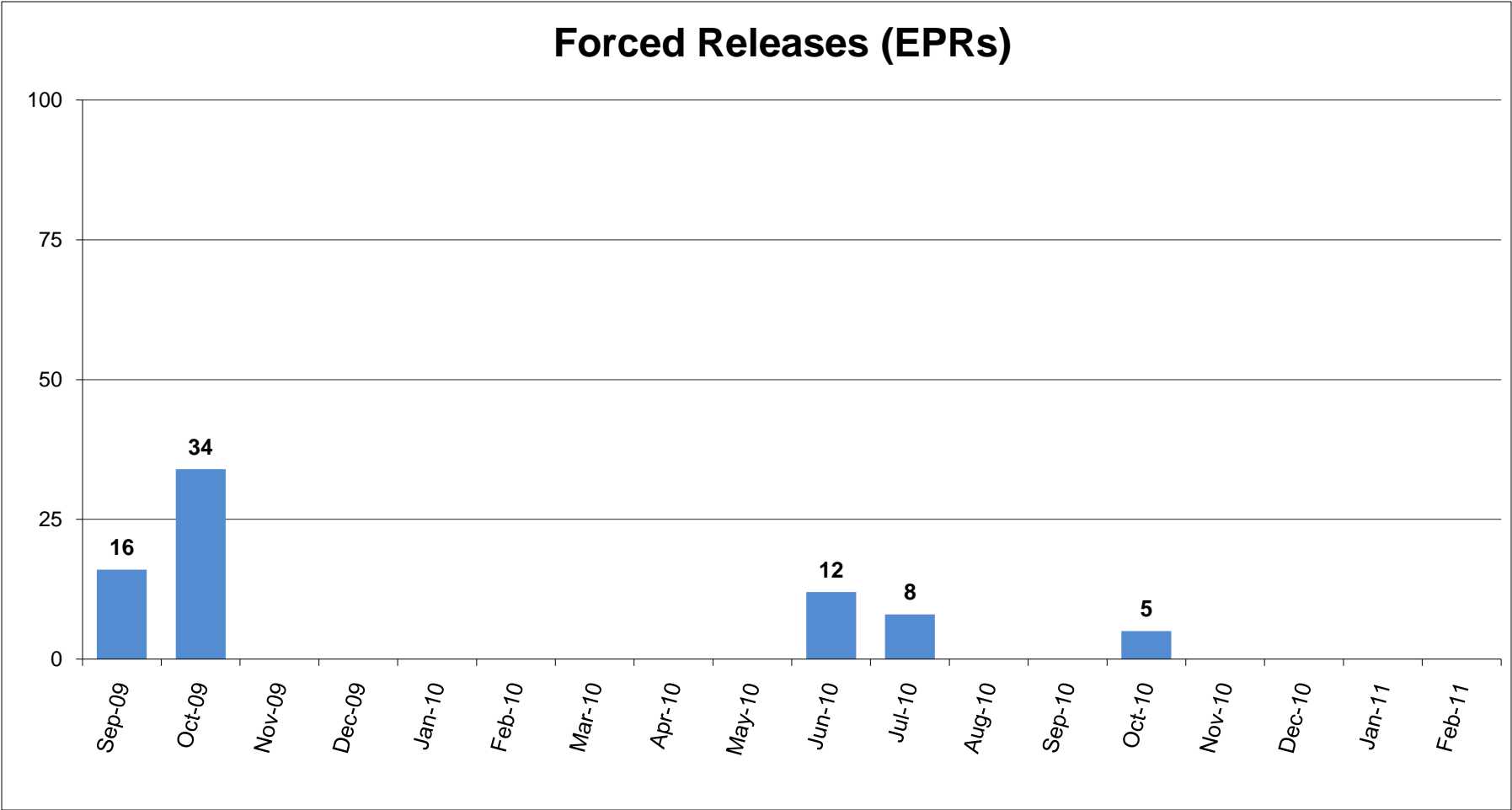
## Recognizance Releases (subset of total releases)



On average, recognizance releases increased from 30 per day in January to 33 per day in February. The percentage of recognizance releases to standard bookings also increased.



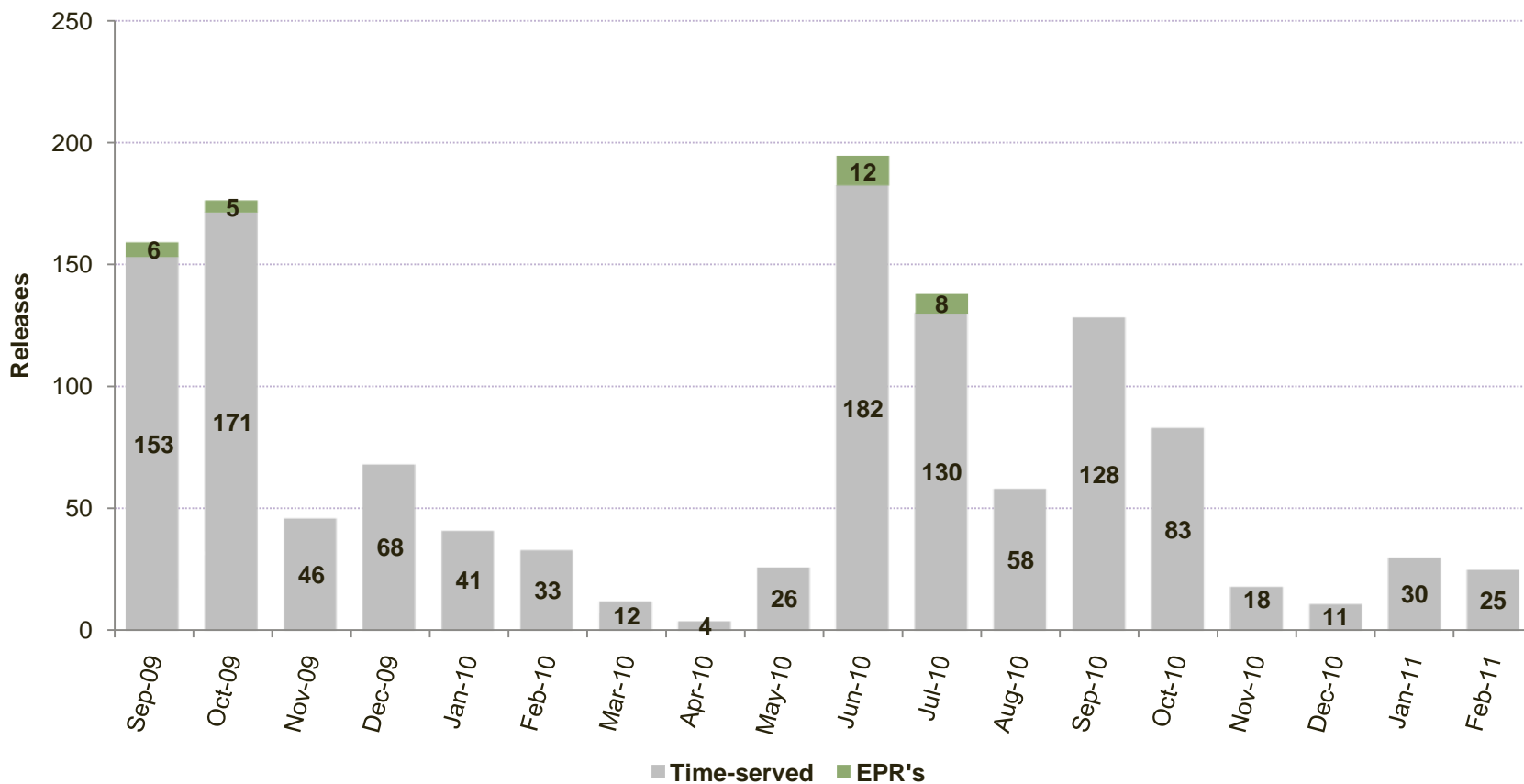
# Forced Releases (EPRs)



\*Forced releases may occur per Multnomah County Board Resolution 04-135 as part of the jail capacity management plan. There were no forced releases in February 2011.



### Releases between 12 AM and 8 AM\*

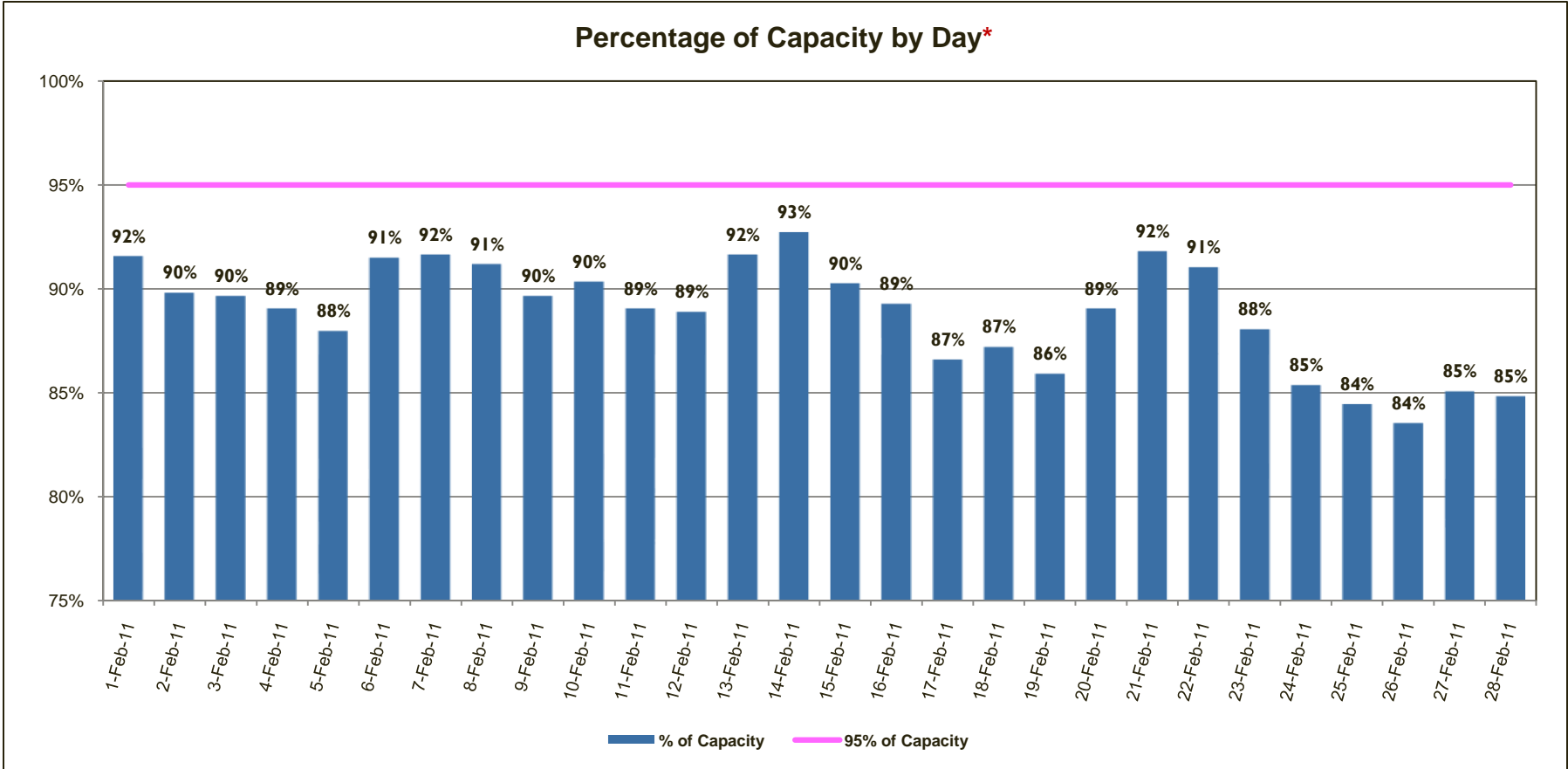


\*Non-discretionary court-ordered and recognizance releases are not included.

In February 2011, 25 time-served inmates were released from jail between the hours of 12AM and 8AM.



### Percentage of Capacity by Day\*

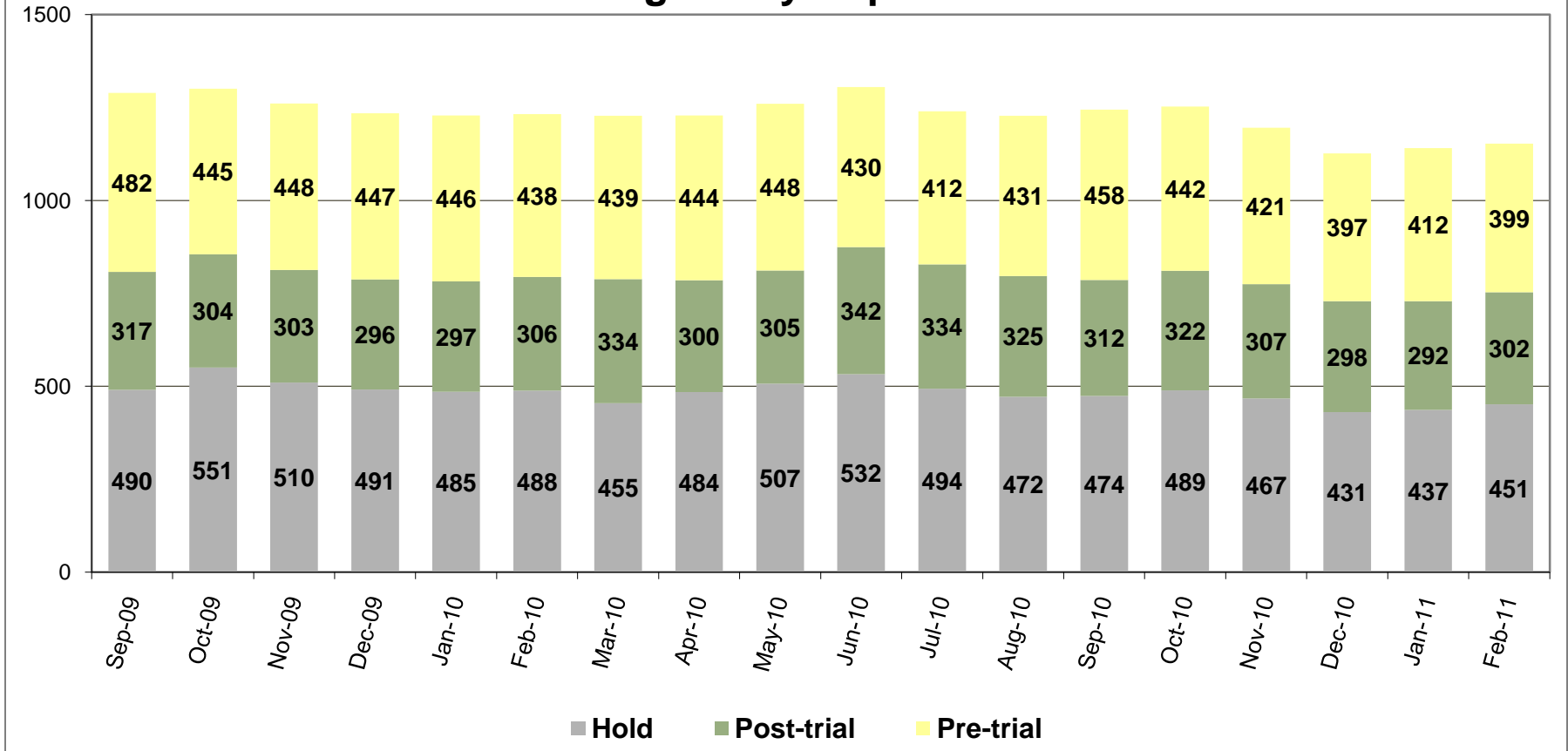


\*Red bars indicate days on which EPRs occurred, if any. EPRs do not always or only occur when capacity exceeds the 95% threshold. Efforts are made to balance the population to the demands of the classification system for specific types of jail beds and balance the space needs for male or female inmates. Additionally, jail capacity varies throughout the day. These capacity calculations are based on 4 AM population counts.

On September 23, 2010, the Multnomah County Board of Commissioners adopted Resolution No. 2010-141 whereby if the number of inmates housed within the Multnomah County jail system reaches 95% of the population limit, a county jail population emergency will exist.



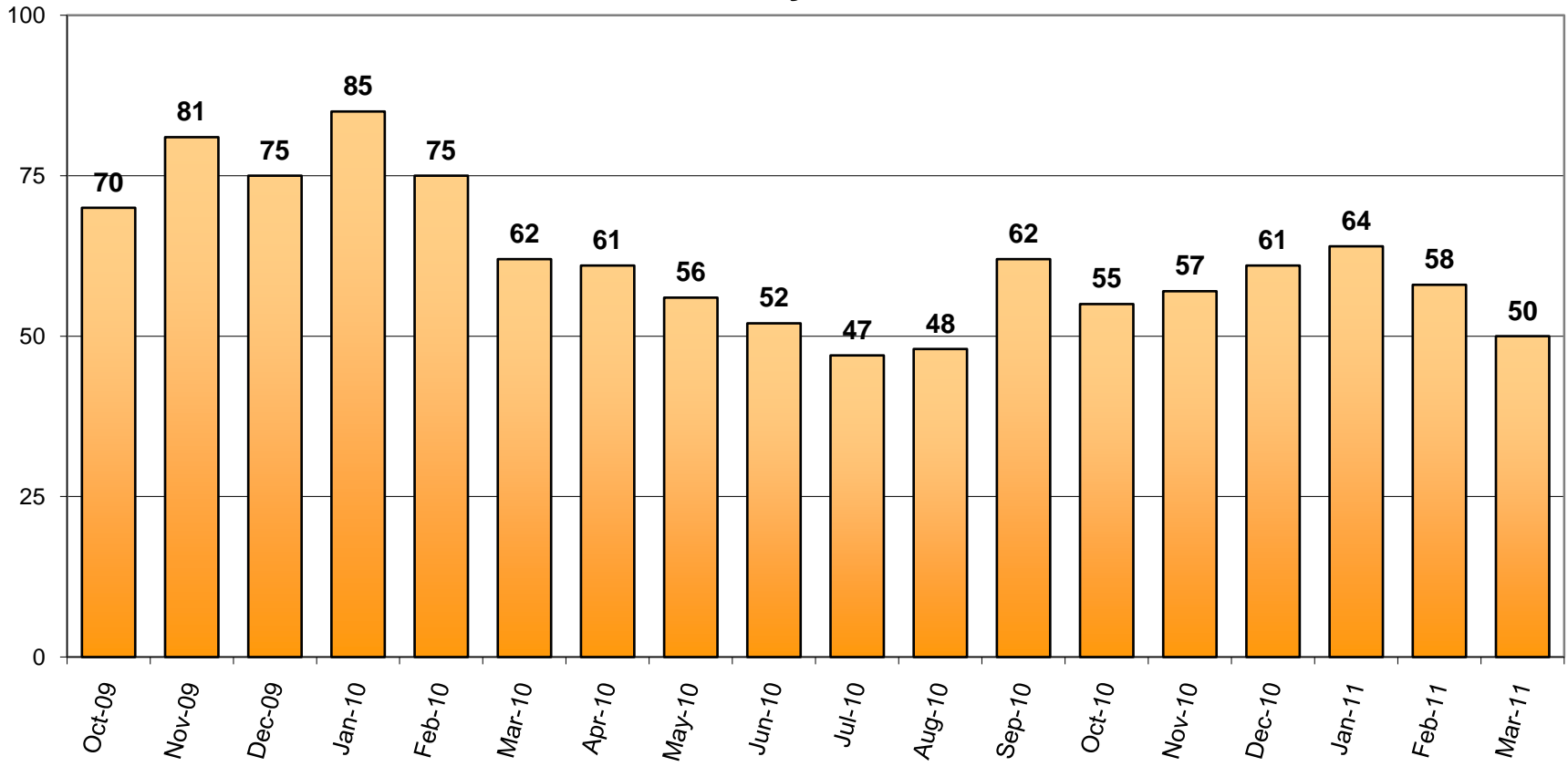
## Pre-Trial vs. Post-Trial vs. Holds in Custody Average Daily Population



The average number of inmates jailed on holds and post-trial both increased between January and February. The average number of pre-trial inmates decreased during the same time period.



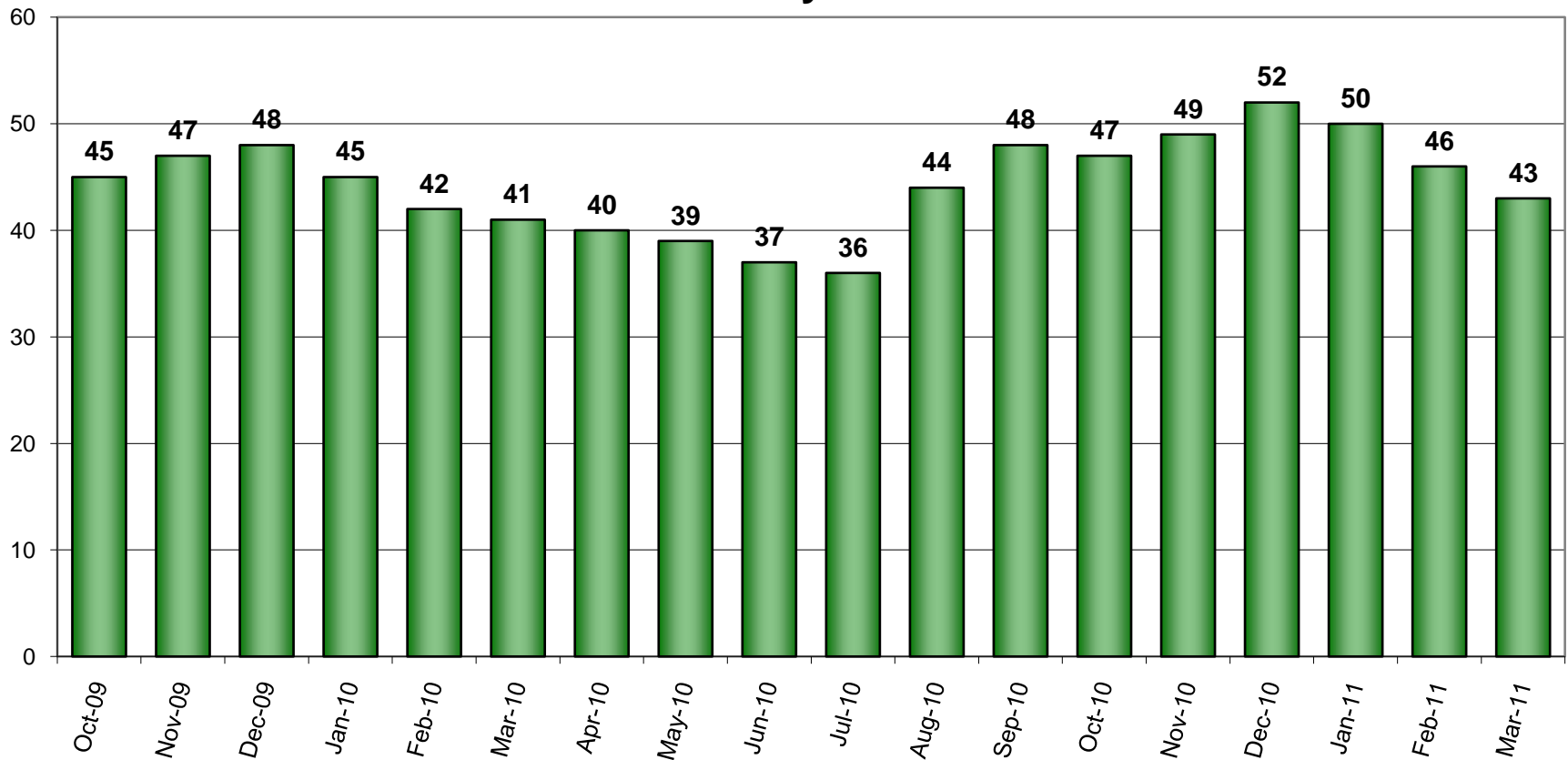
## Count of Persons Held Pre-trial more than 150 Days on First Day of Month



The number of inmates jailed pre-trial more than 150 days was 50 on March 1, 2011.



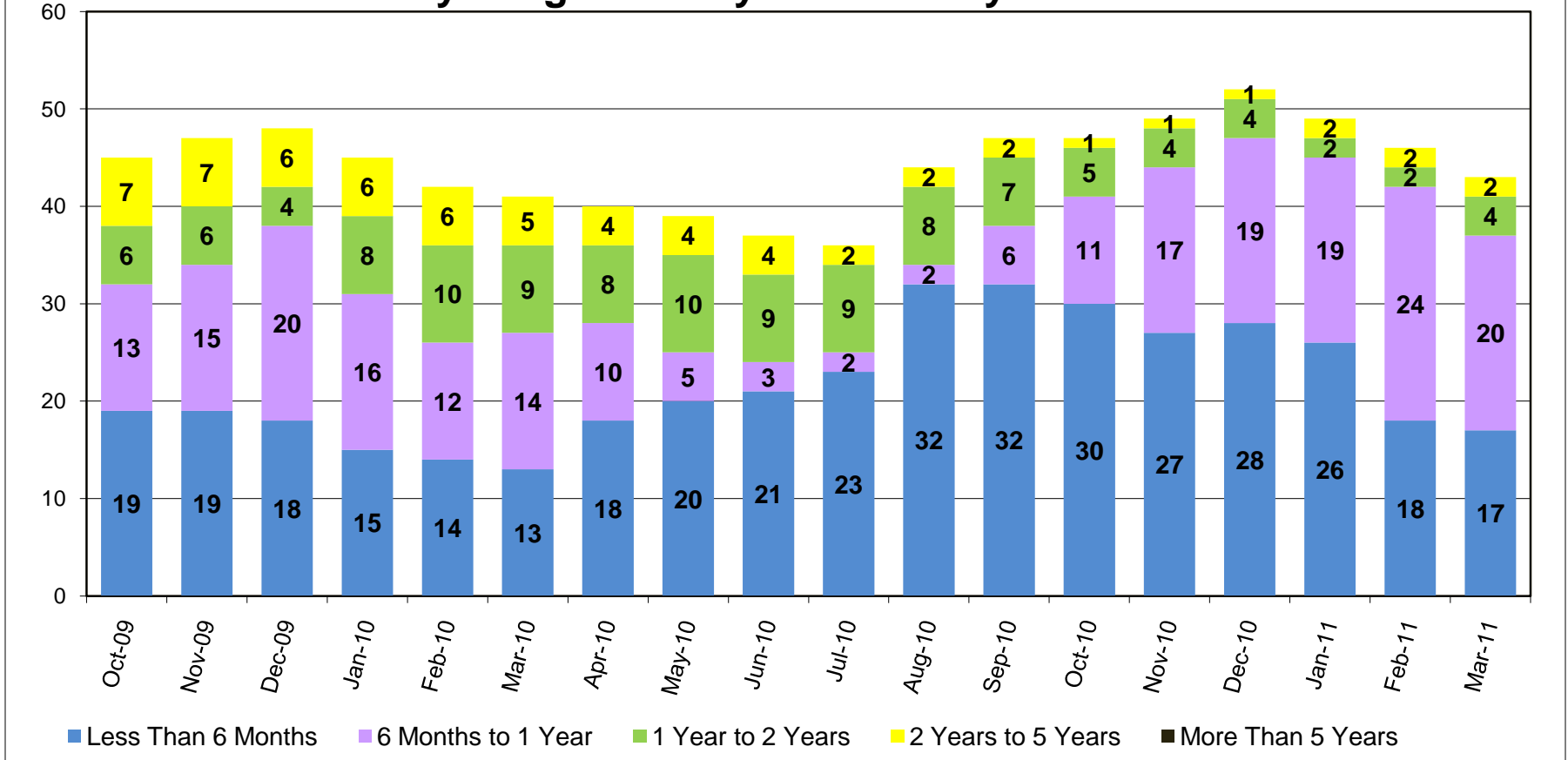
## Count of Persons Held Pre-trial on Murder Related Charges on First Day of Month



On March 1, 2011, a total of 43 inmates accused of murder were being held pre-trial.



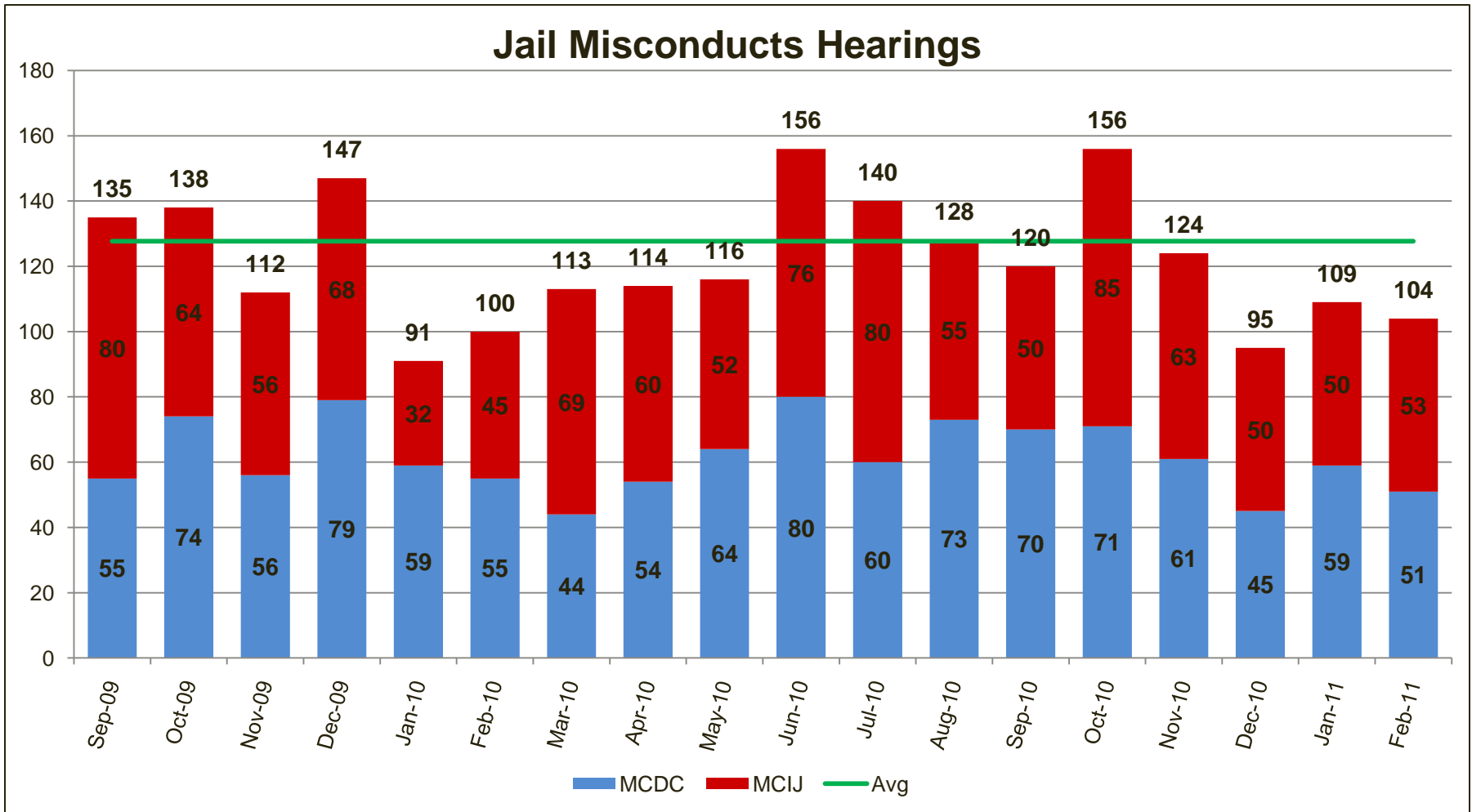
## Count of Pre-trial persons with Murder Related Charges by Length of Stay on First Day of Month



As of March 1, 2011, there were six inmates accused of murder and held pre-trial in jail for longer than one year.



## Jail Misconducts Hearings



As the jail capacity decreases and housing options become more limited, there are increased challenges in managing the inmate population. Tracking misconducts of inmates informs jail management on classification, housing, and other operational issues.



## Special Analysis: Jail Misconduct Hearings Data

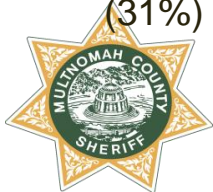
Jail Misconduct Hearings originate from disciplinary violations. Seventy-four percent (74%) of Misconduct Hearings are for more than one violation. Violations are divided into three levels of severity: High, Medium, and Low. Sanctions for violations are based on the severity. The table below is an example of the definitions and sanctions associated with an **assault** violation.

ASSAULT		
Severity	Minimum Sanction	Maximum Sanction
<u>High</u> – Unprovoked Physical Attack, Staff Assault, New Charges, Weapon used, Injury	25 days LD	30 days LD
<u>Medium</u> – Attempt Assault, Throw Item at Person	15 days LD	25 days LD
<u>Low</u> – Incidental Staff Contact, Aggressive Contact	10 days LD	15 days LD

In addition to the severity of the violation, there are also aggravating/mitigating factors associated with each incident which may affect the sanction. These include RISK/DANGER, TIME/LOCATION, ATTITUDE, Demeanor, HISTORY, CONSPIRACY ATTEMPT, and ADDITIONAL FACTORS CONSIDERED. For example, an inmate whose demeanor is cooperative and has no disciplinary history may receive the minimum sanction.

Sanctions for major rule violations can include (but are not limited to): segregation, loss of good time credit, loss of personal visits, written warnings, and monetary fines.

In 2010, the top three violations were Disruptive Behavior, Failed To Do As Ordered, and Disrespect/Harassment. Over half (54%) of violations were medium in severity. Thirty-one percent (31%) were low and 15% were high.



## **Emergency Population Release Appendix: Detailed Info on Monthly Forced Releases**



No forced releases occurred during February 2011.

See previous reports for detailed information on monthly forced releases.

