

MULTNOMAH COUNTY SHERIFF'S OFFICE

Monthly Jail Report, April 2011



Multnomah County Sheriff's Office - Dan Staton, Sheriff
501 SE Hawthorne Blvd., Suite 350 Portland OR 97214
503-988-4300 (TTY 503-988-4500) www.mcso.us

Welcome to the Multnomah County Sheriff's Office Monthly Jail Report!

This report is a monthly publication of MCSO's Resource Analysis Unit. We are eager to hear any suggestions or feedback you may have. Please feel free to contact any one of us in the RAU:

David Braaksma
Markley Drake
Wendy Lin-Kelly
Lt. Jeff Wheeler

503-988-4300

April Summary (and reference page):

Standard bookings: 2686 (p. 3)

Average Length of Stay: 12.79 days (p. 8)

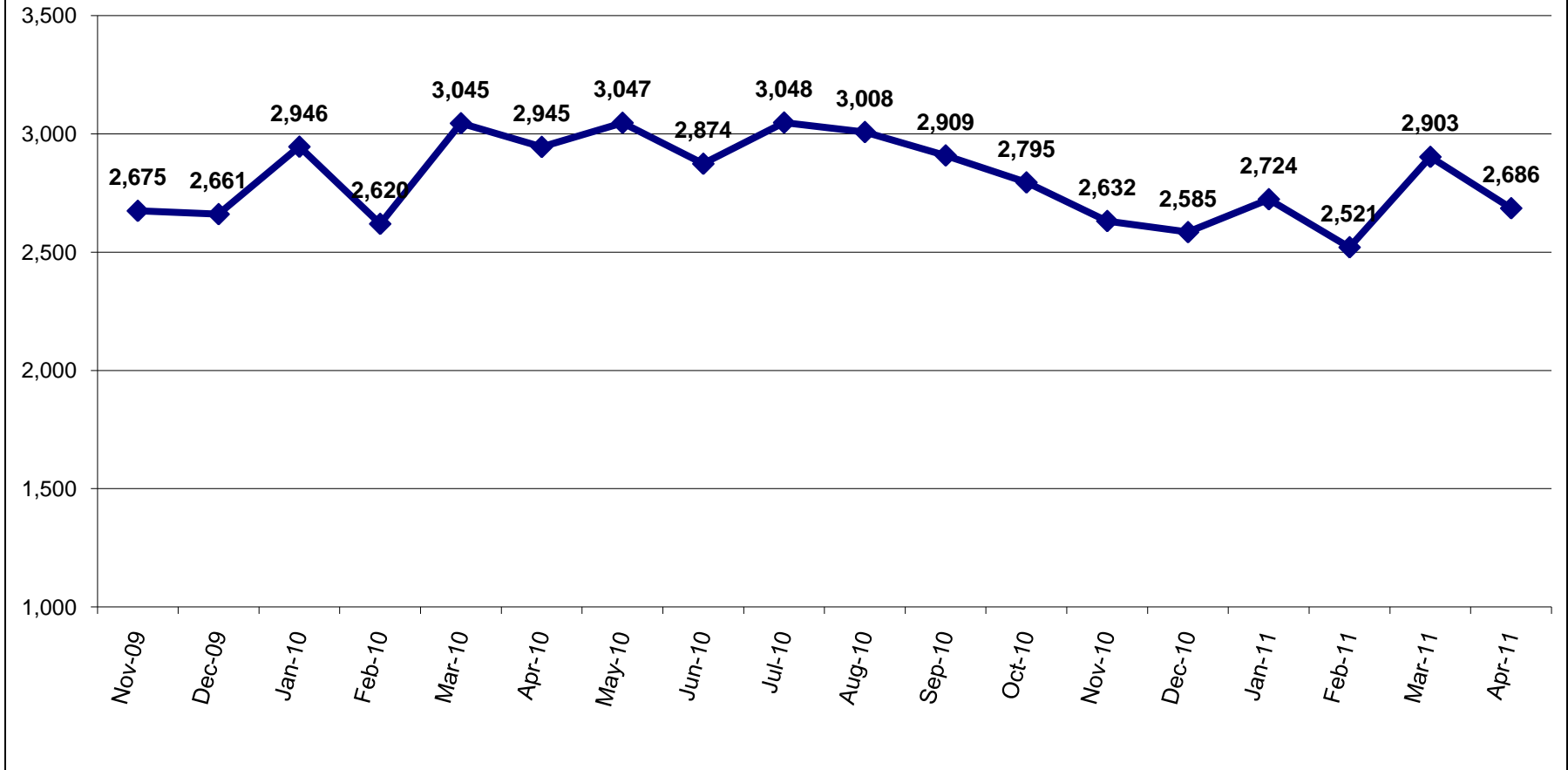
Capacity: 1310 beds (p. 10)

Average Daily Population: 1145, 87% of capacity (p. 10)

Forced Releases (Emergency Population Releases): 0 (p. 14)



Standard Bookings

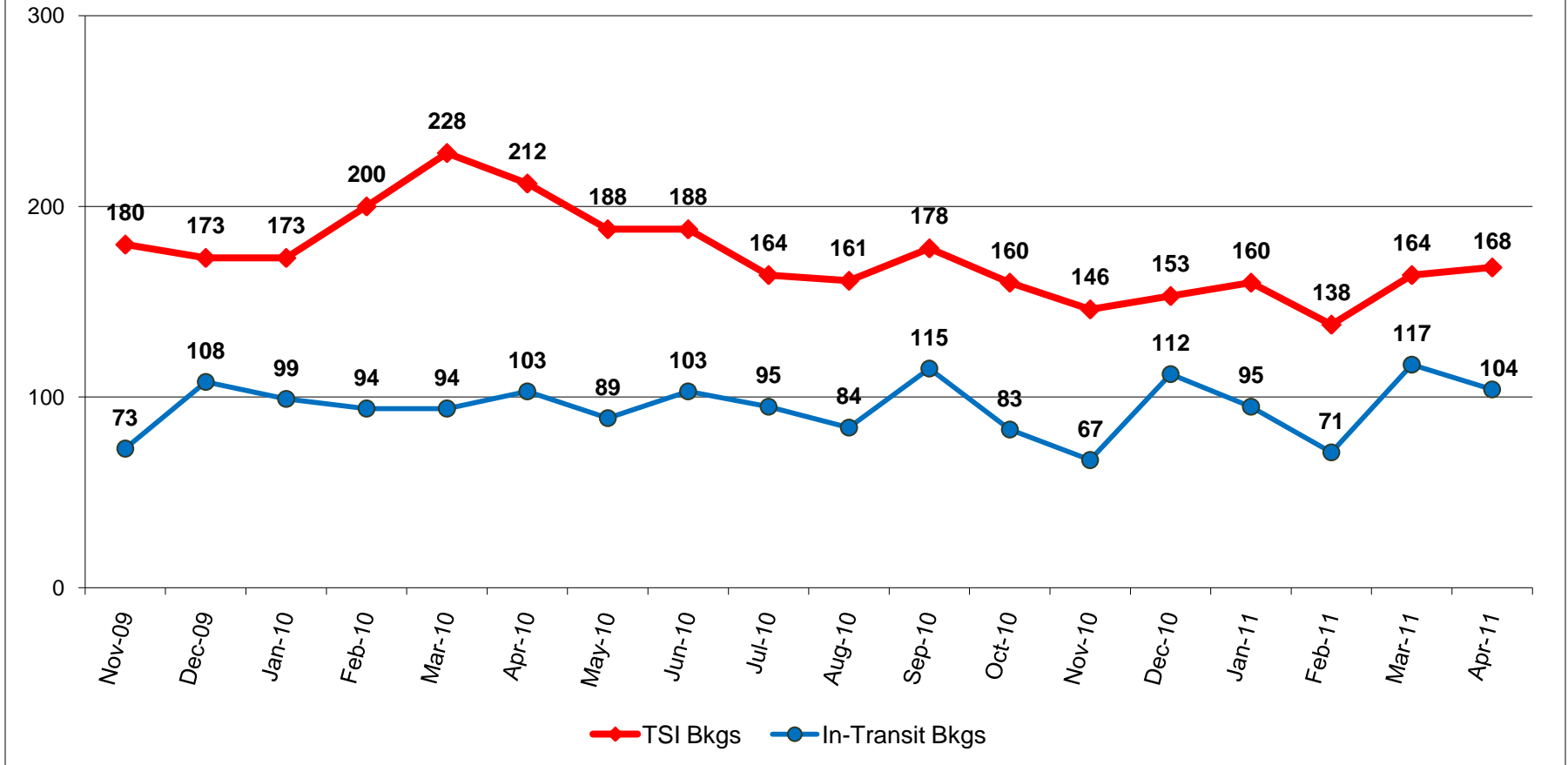


Standard bookings totaled 2686 in April 2011, averaging 90 bookings per day.



Exemplary Service for a Safe, Livable Community

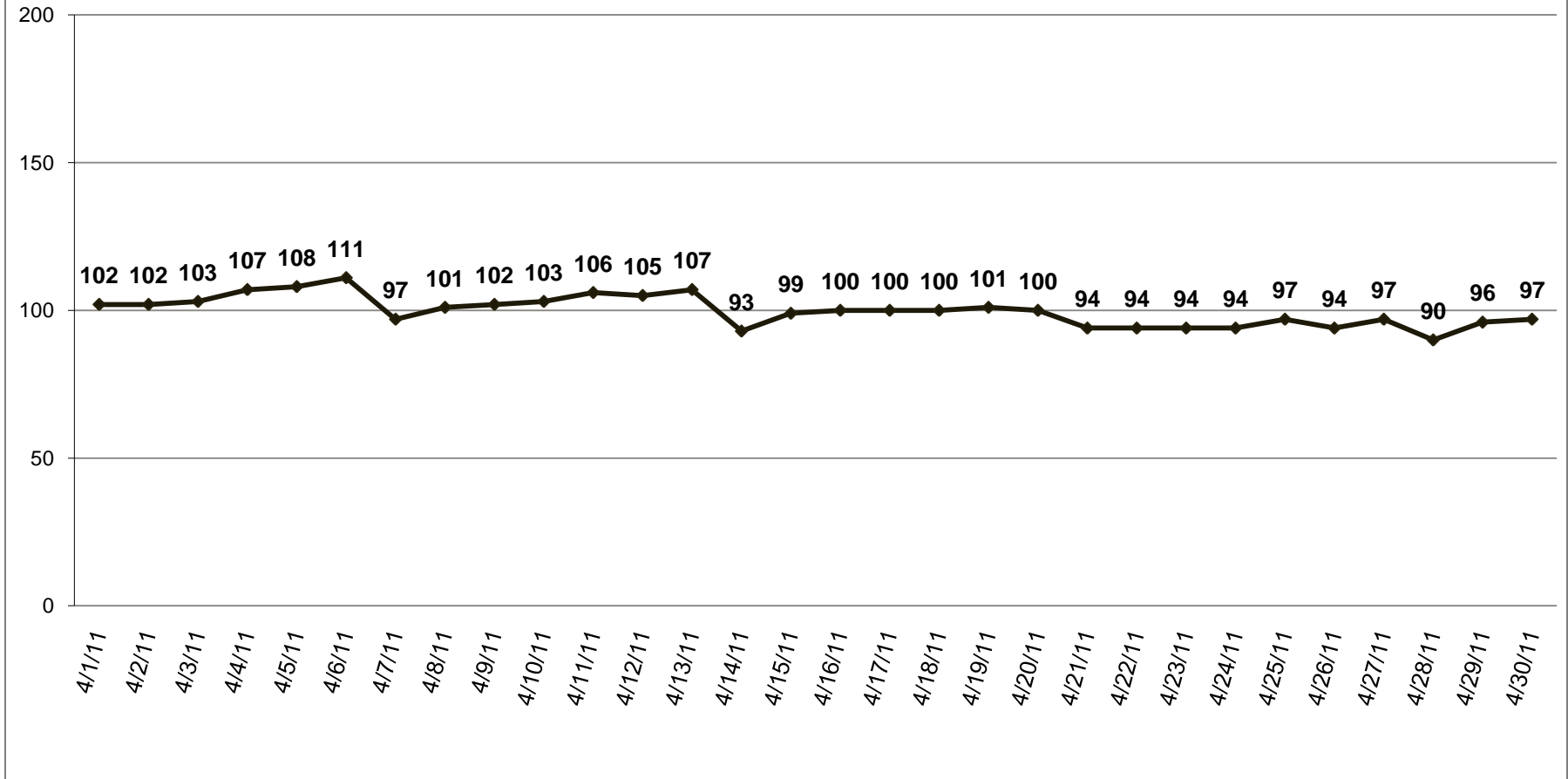
Turn-Self In and In-Transit Bookings



Turn-Self In (TSI) bookings are where an offender has been sentenced and ordered to return to jail at a later date. In-Transit bookings are of those being held for other jurisdictions while being transported. The number of In-Transit bookings decreased while the number of TSI bookings increased between March and April.



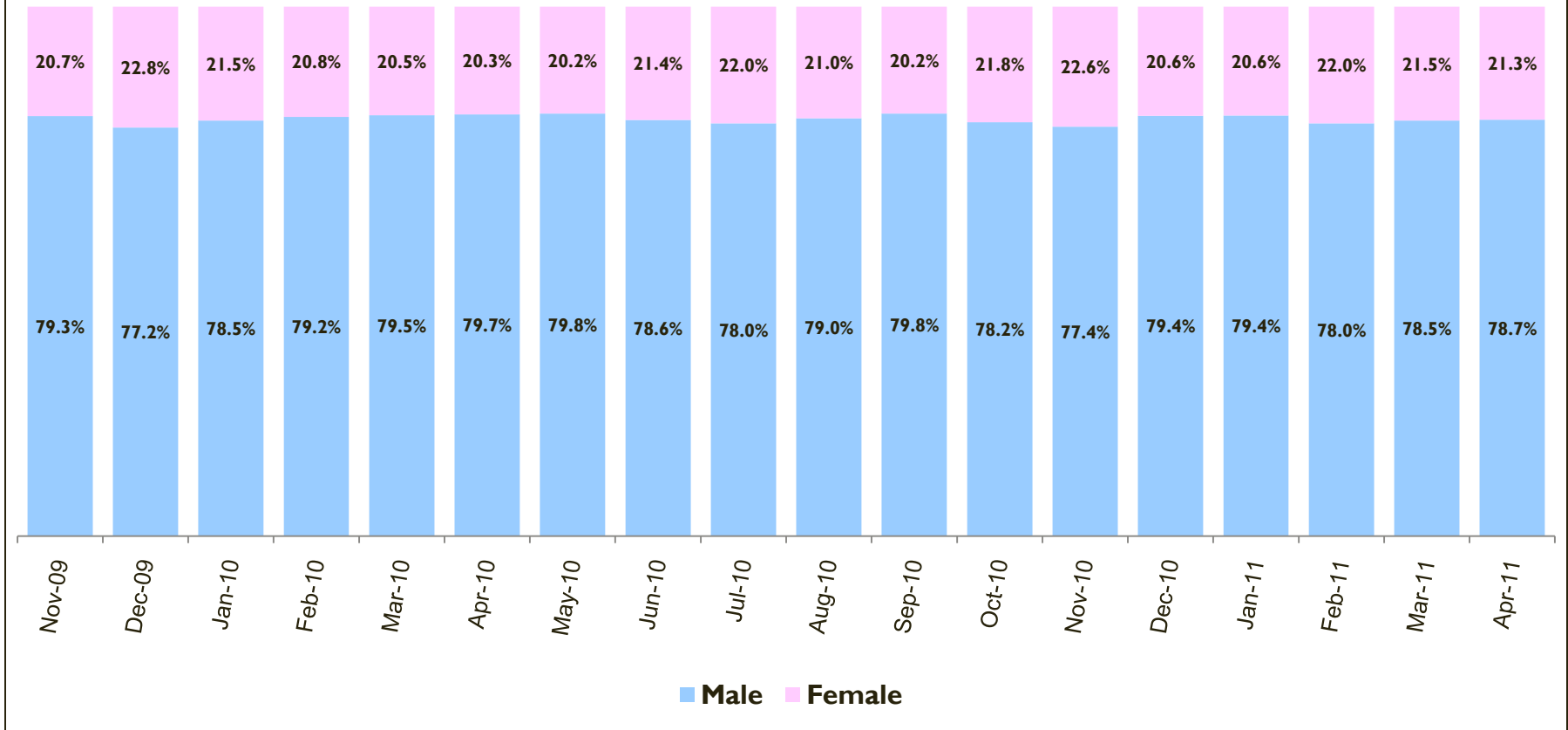
Daily Count of Exclusive U.S. Marshal Inmates



US Marshal inmates averaged 100 per day in April 2011. This is down from an average of 107 in March and an average of 130 in February. As US Marshal inmate counts per day may change over time, these data are as of May 6, 2011.



Gender Composition of Bookings

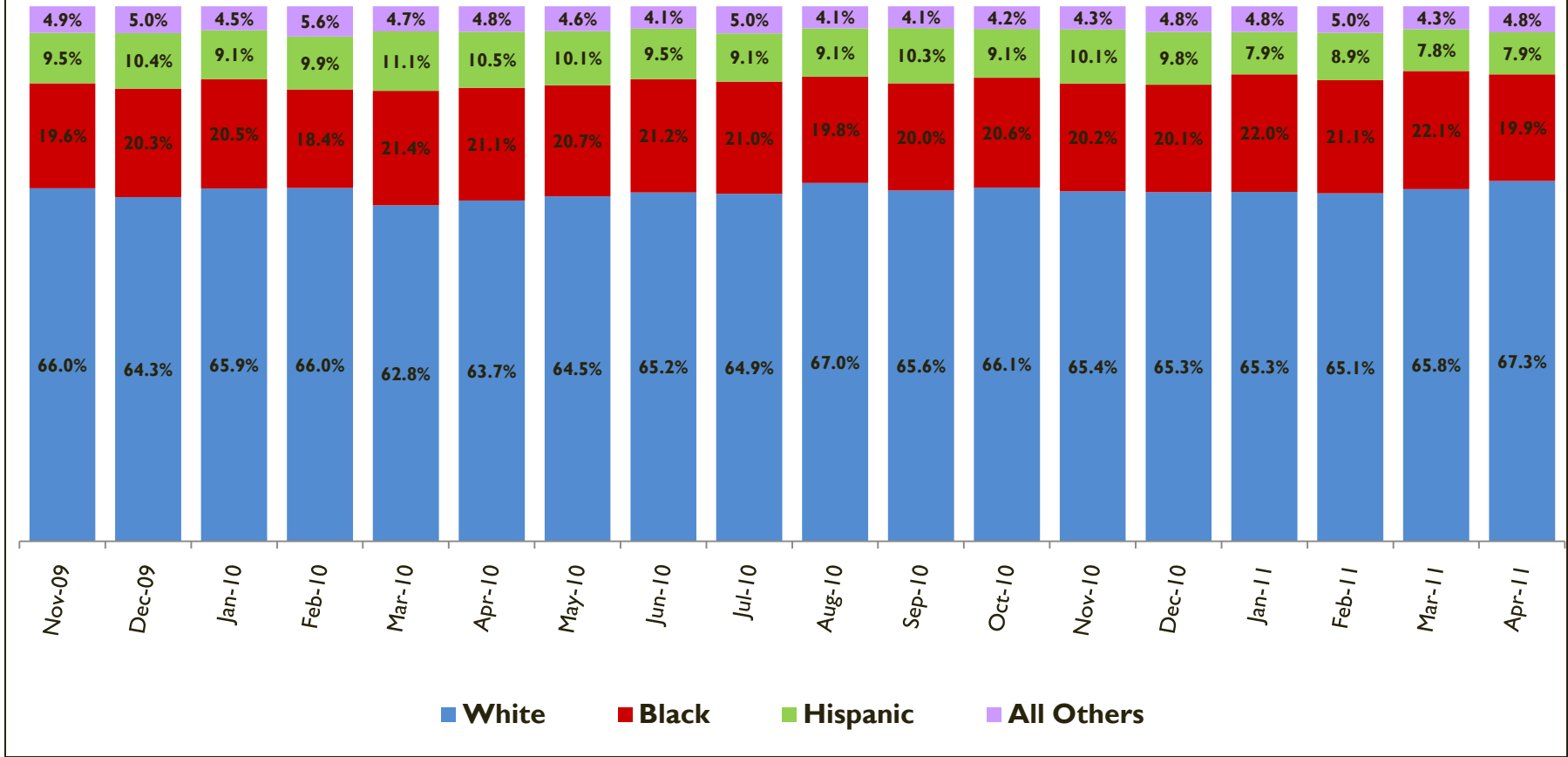


*Includes standard and TSI bookings.

The percent of females and males booked is typically between 18 - 22% and 78 - 82%, respectively.



Ethnic Composition of Bookings

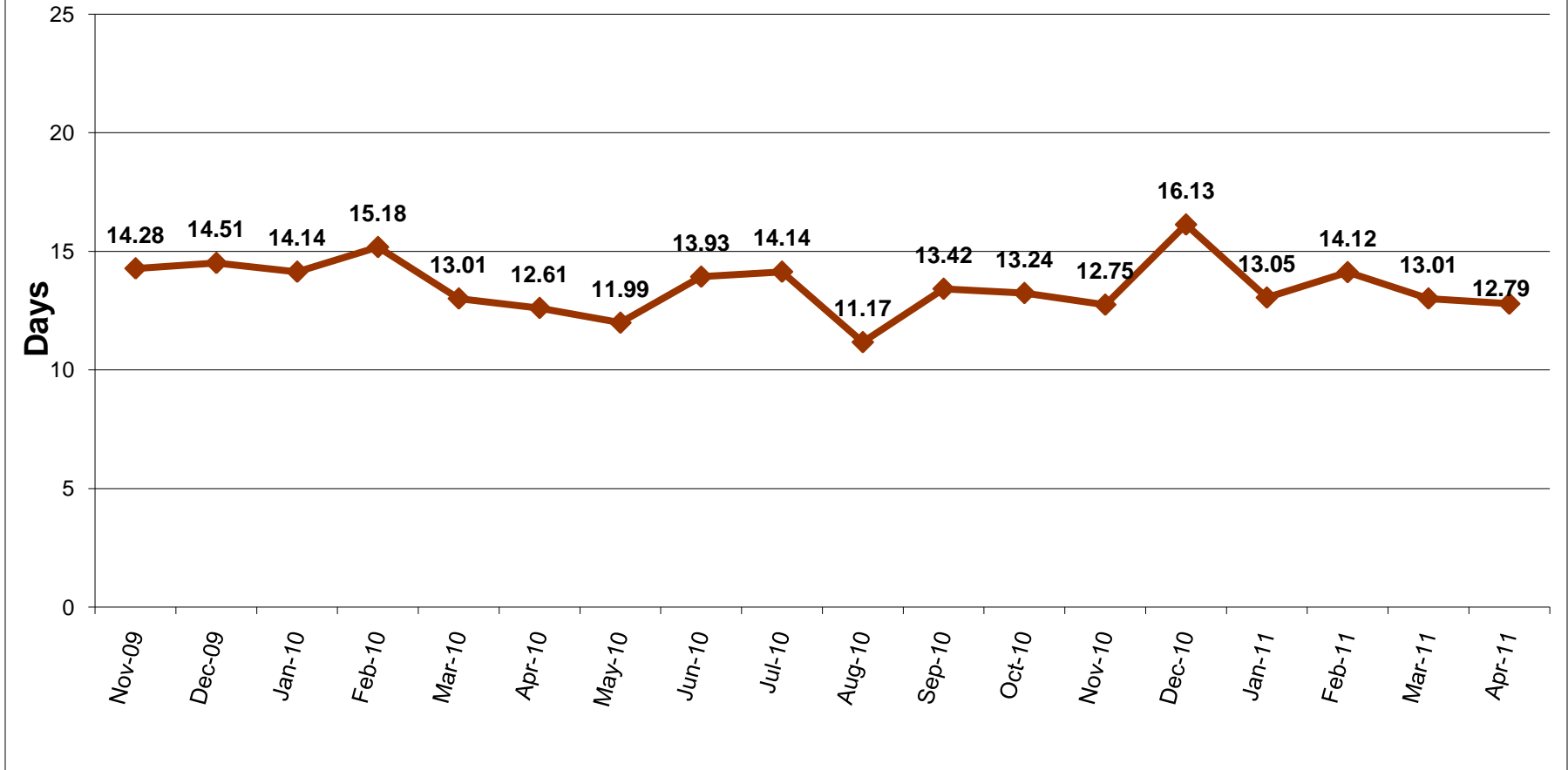


*Includes standard and TSI bookings.

The ethnic composition of bookings is relatively stable month to month. Approximately two-thirds of those booked are White. April 2011 had the highest percentage of White bookings of the past 18 months.



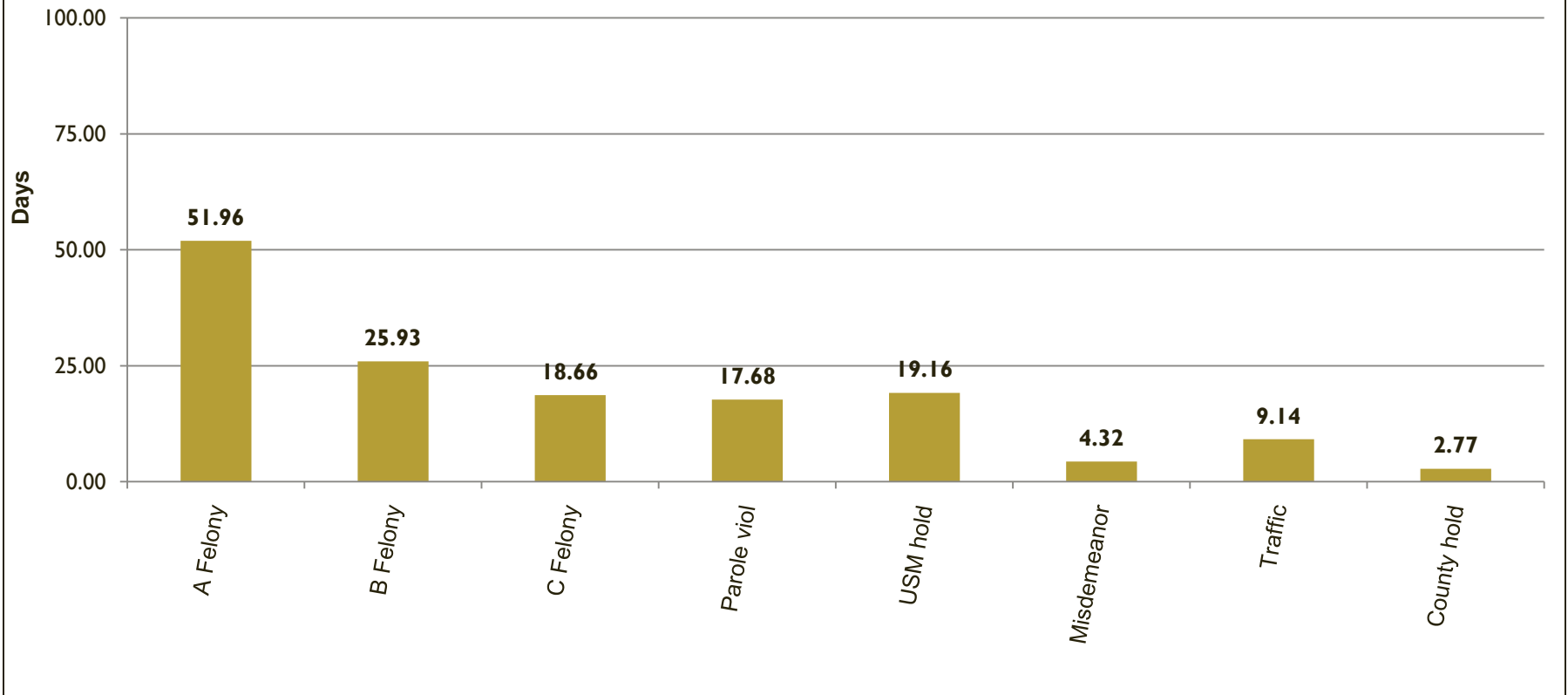
Average Length of Stay (in days)



The average length of stay was 12.79 days for inmates released in April.



Average Length of Stay by Charge Priority (for inmates released during the month)

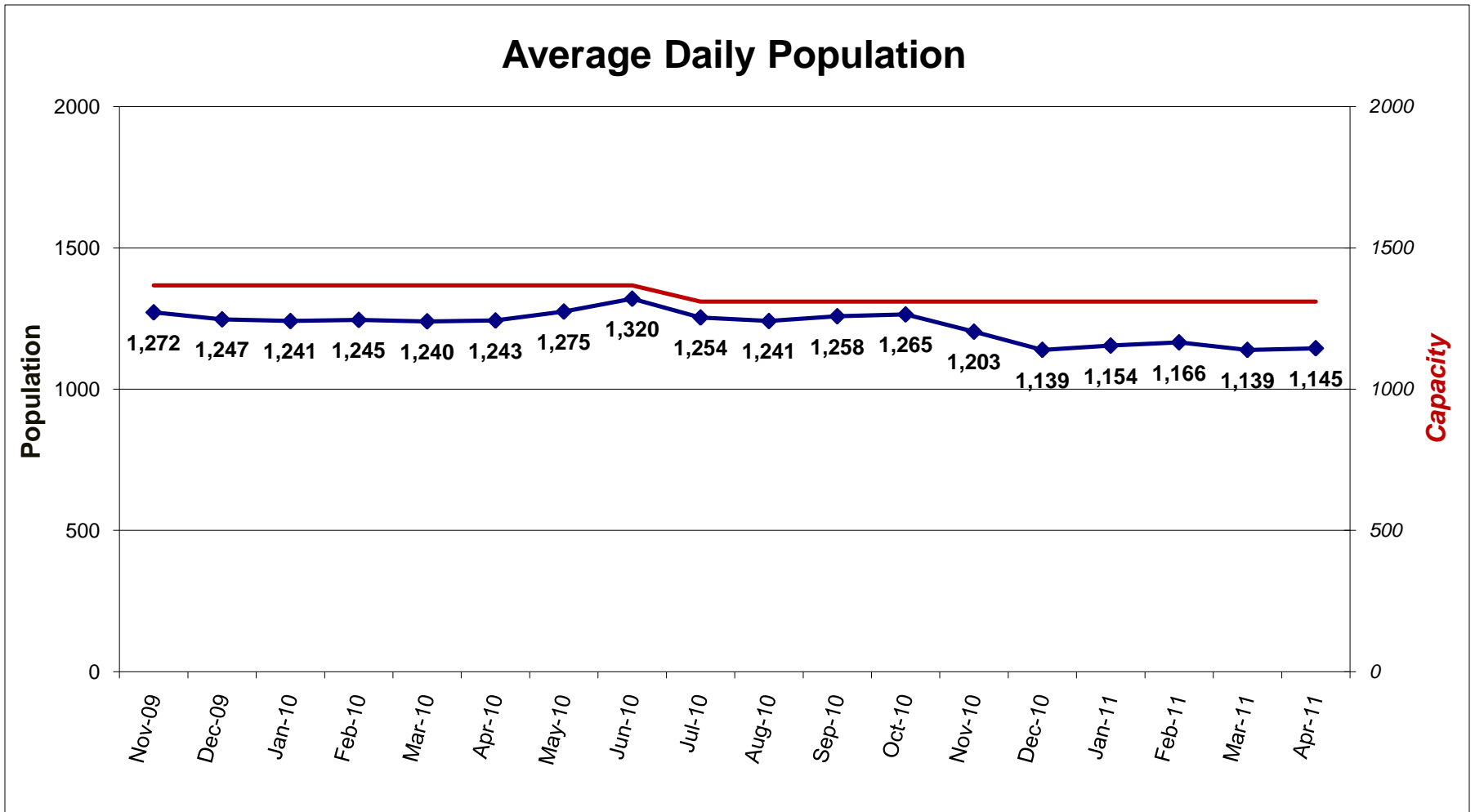


*Data based on primary or most serious charge, regardless of status of the case.

In April 2011, 860 inmates with felony charges were released. They had an average length of stay of 25 days. The 1278 inmates released with misdemeanor charges had an average length of stay of just over 4 days.



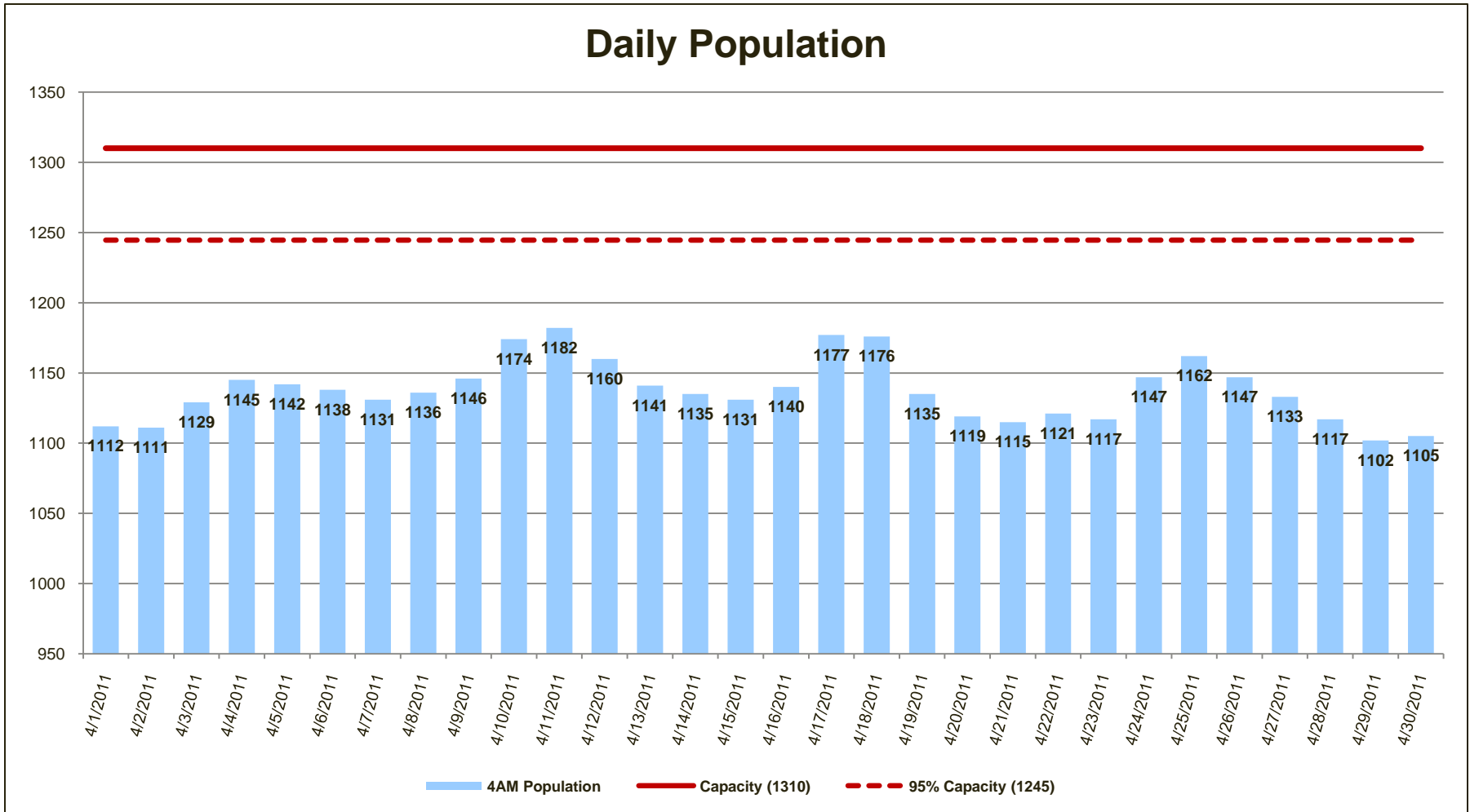
Average Daily Population



On July 1, 2010, the capacity of Multnomah County's two jail facilities was reduced from 1367 to 1310. The average daily population in April was 1145, which is 87% of capacity.



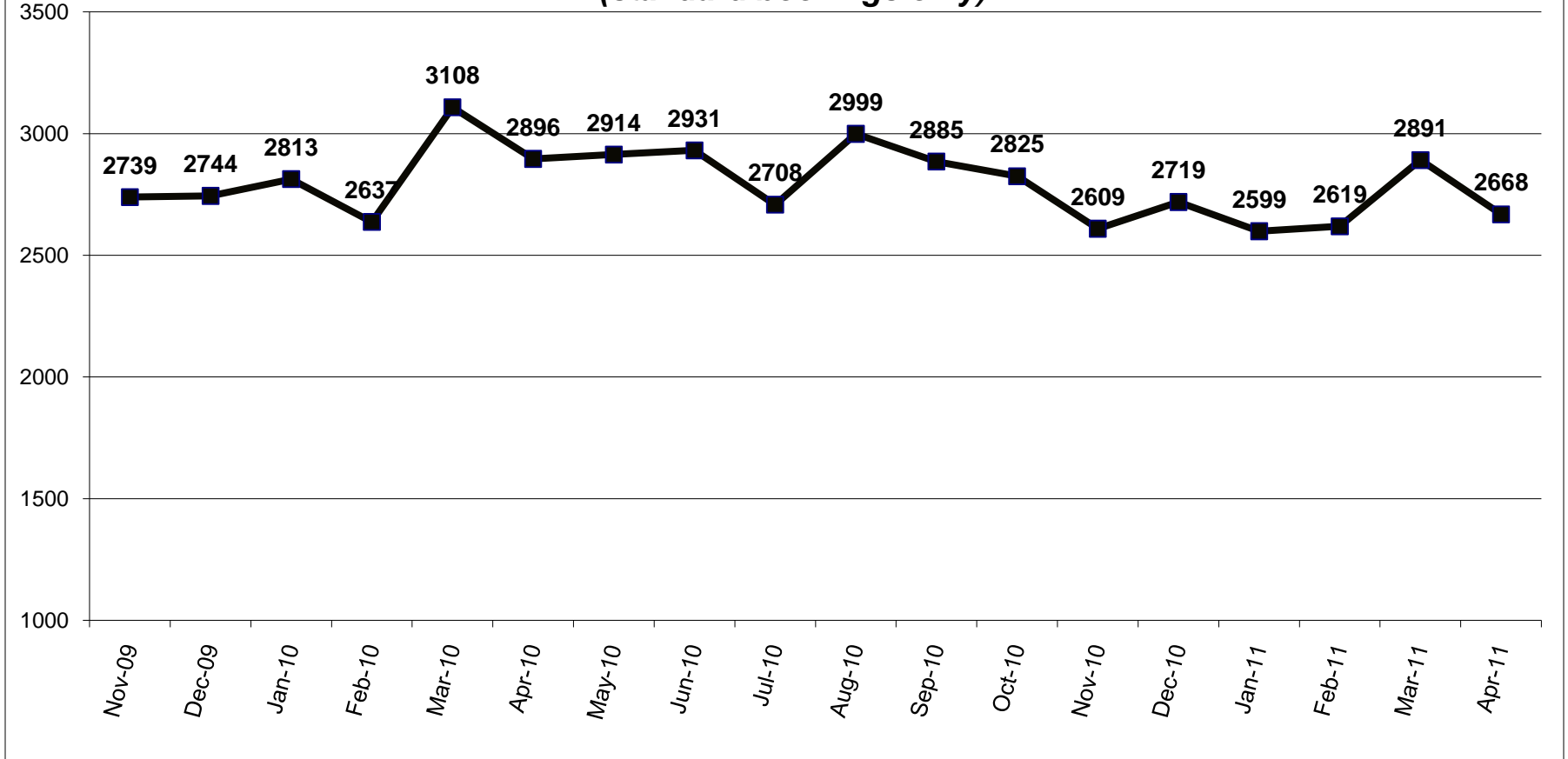
Daily Population



On September 17, 2010, the MCIJ Jail Commander issued Special Order 10-29 which established a process whereby Dorm 3, with 57 beds, could be opened to avoid conducting Emergency Population Releases. It was not necessary to open Dorm 3 in April 2011.



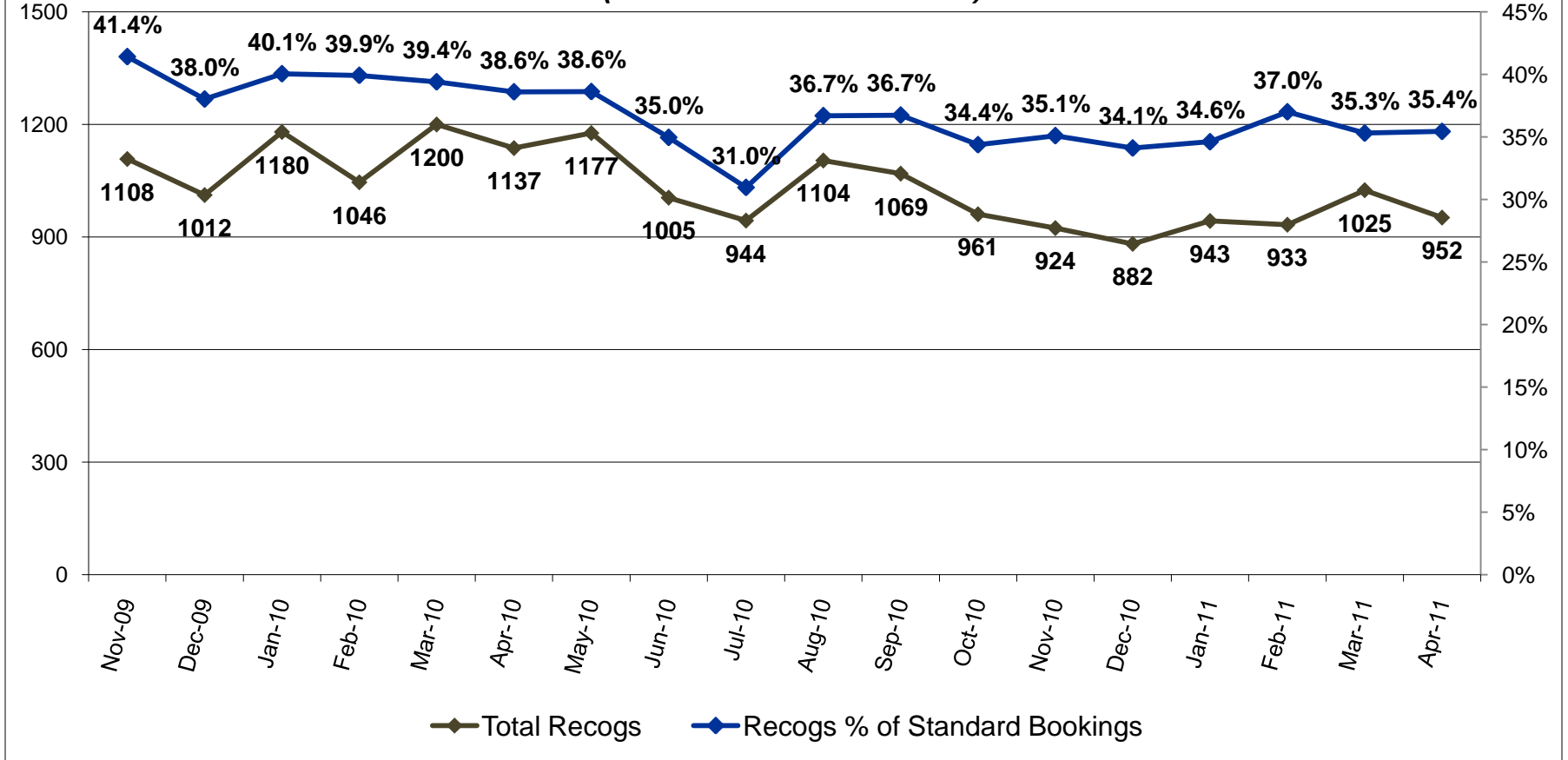
Total Releases (standard bookings only)



Releases among standard bookings decreased from an average of 93 per day in March to an average of 89 per day in April.



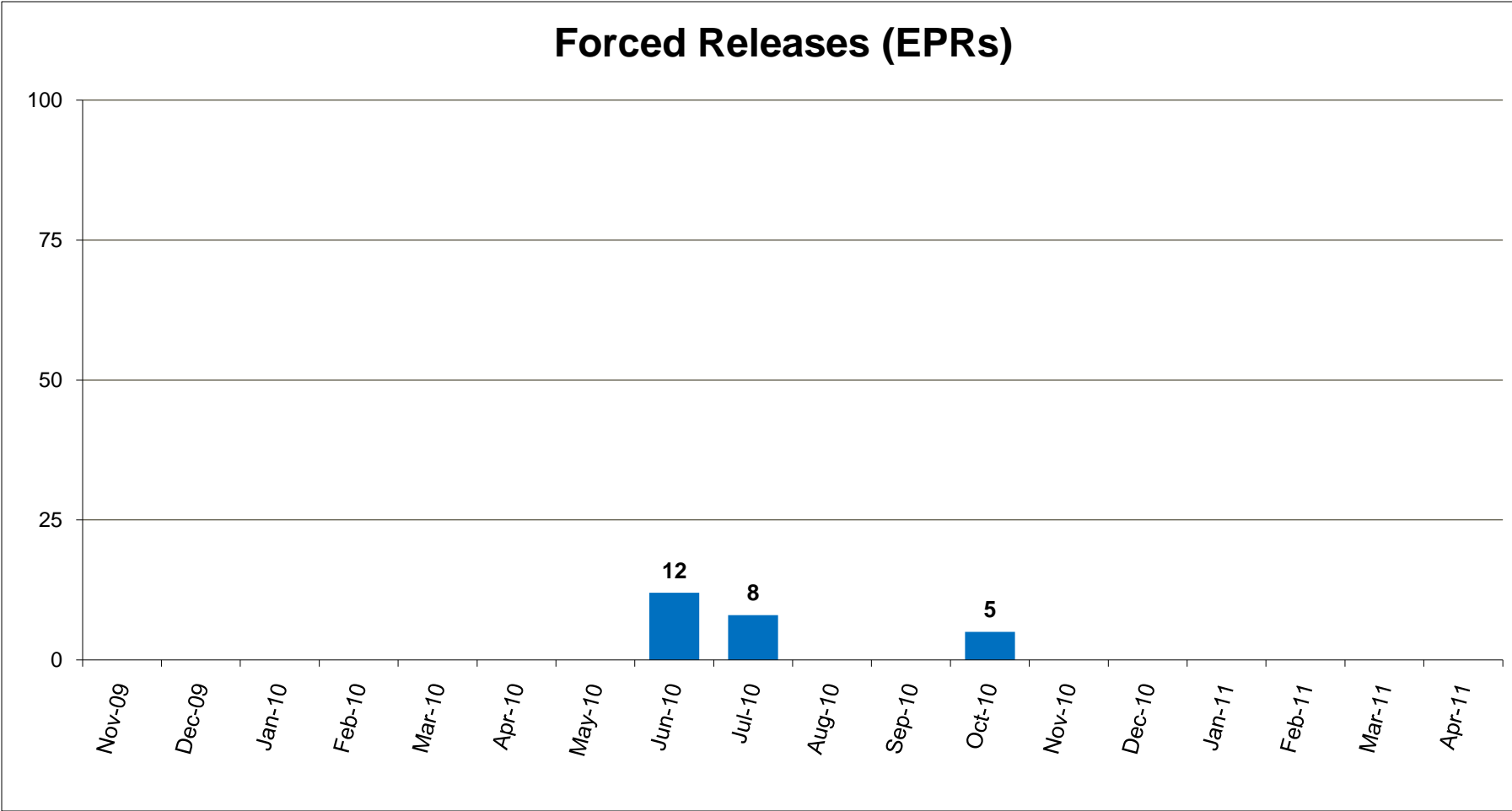
Recognizance Releases (subset of total releases)



Recognizance releases decreased between March and April, averaging 33 per day in March and 32 per day in April. The percentage of recognizance releases to standard bookings increased slightly in April.



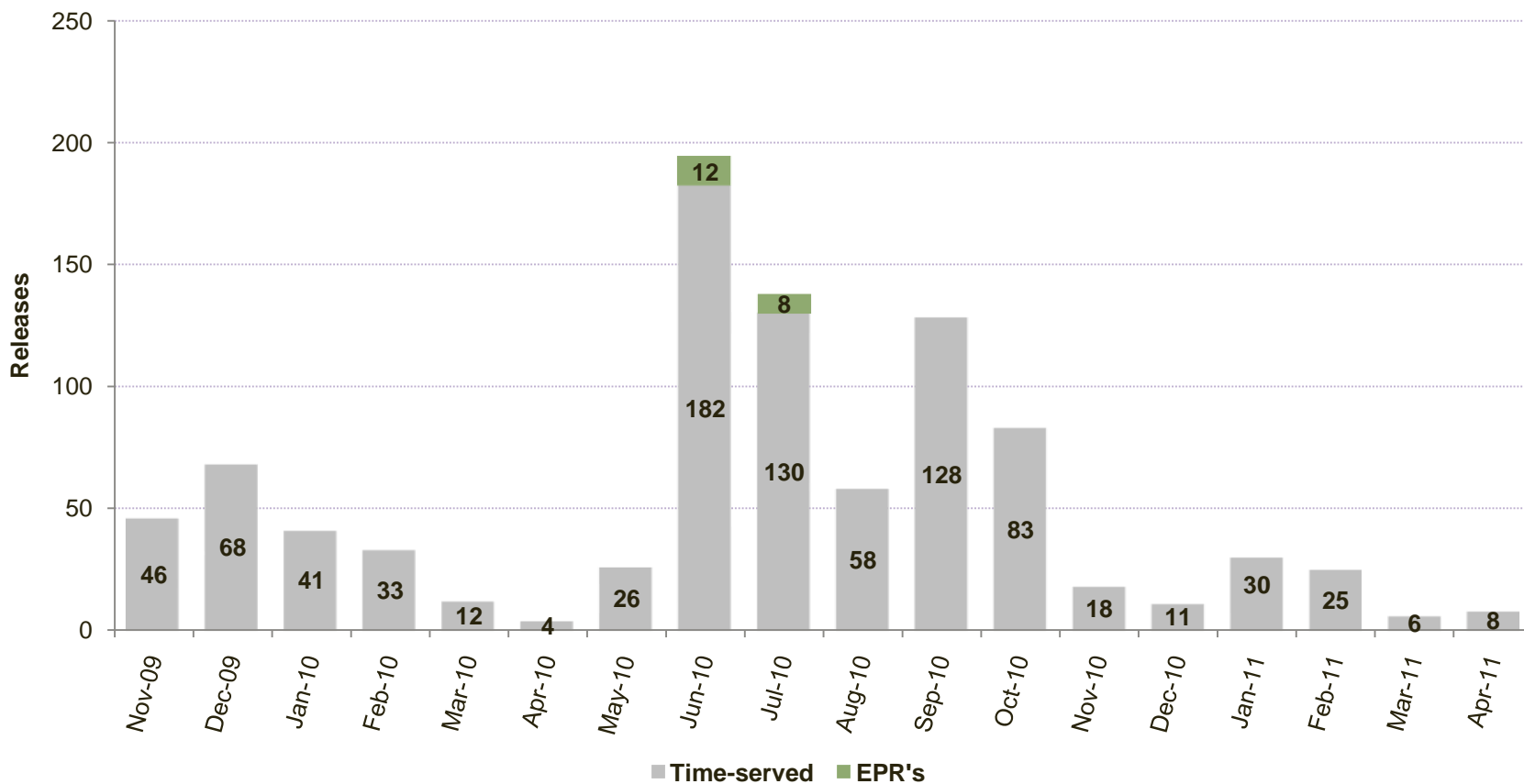
Forced Releases (EPRs)



*Forced releases may occur per Multnomah County Board Resolution 04-135 as part of the jail capacity management plan. There were no forced releases in April 2011.



Releases between 12 AM and 8 AM*

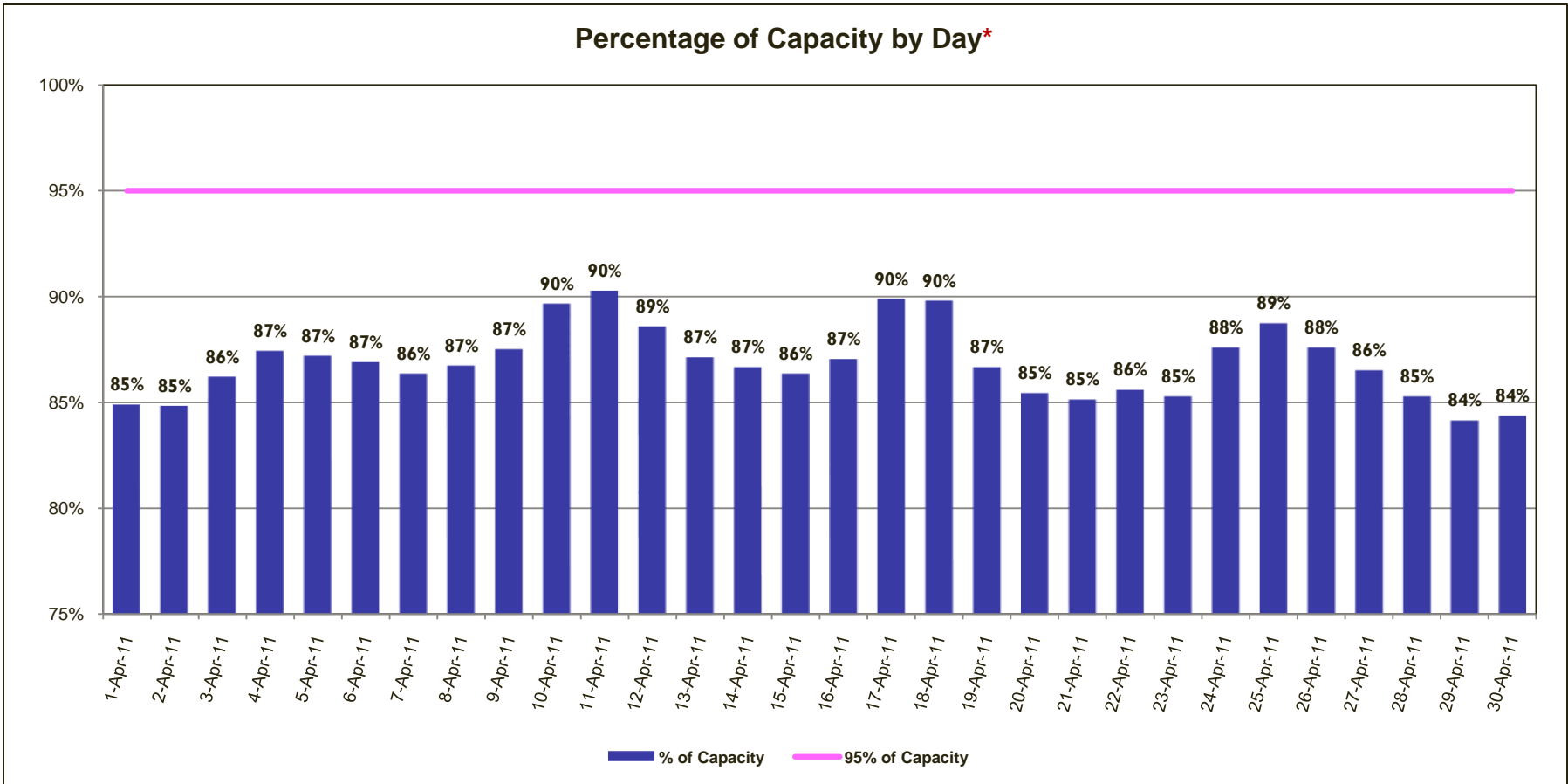


*Non-discretionary court-ordered and recognizance releases are not included.

In April 2011, eight time-served inmates were released from jail between the hours of 12AM and 8AM.



Percentage of Capacity by Day*

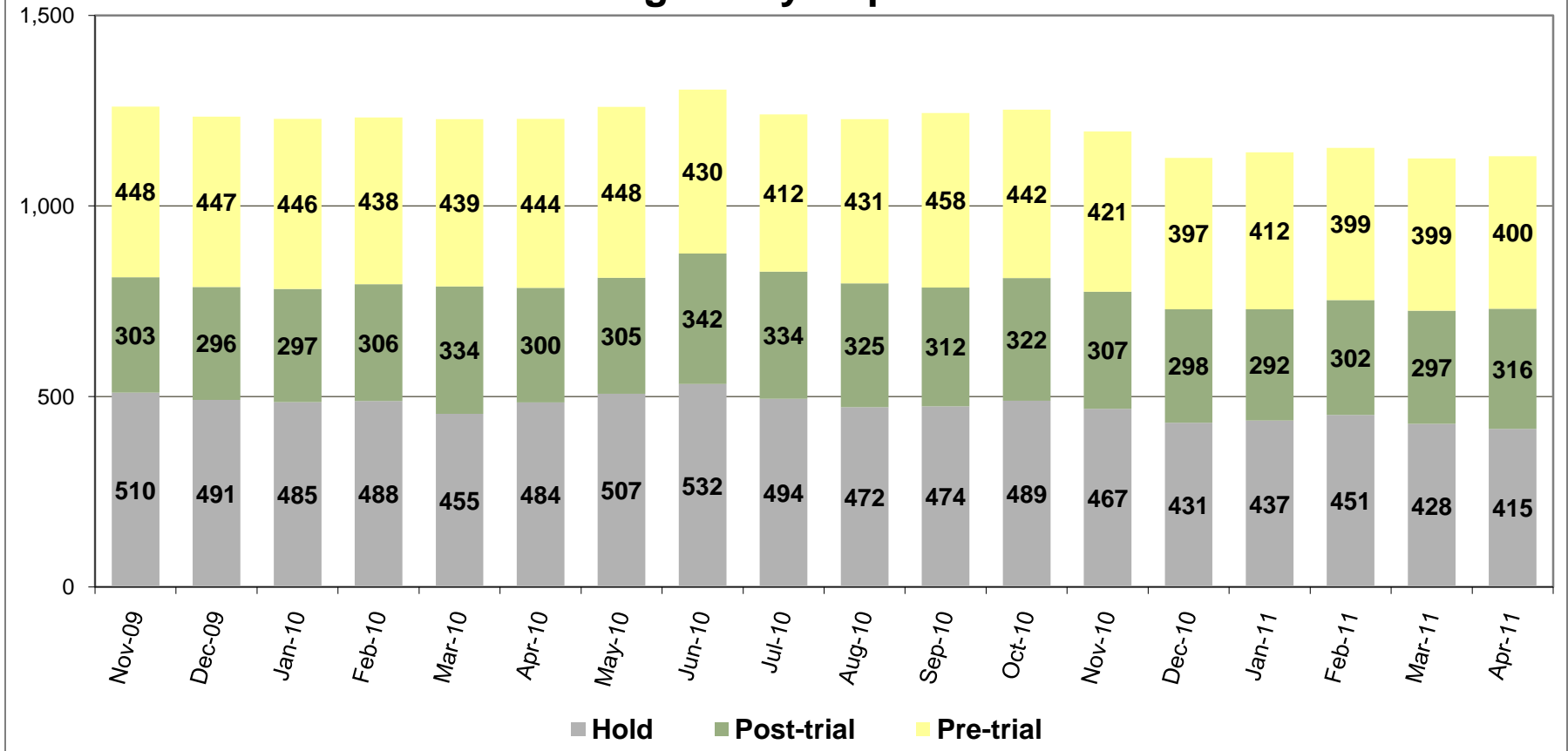


*Red bars indicate days on which EPRs occurred, if any. EPRs do not always or only occur when capacity exceeds the 95% threshold. Efforts are made to balance the population to the demands of the classification system for specific types of jail beds and balance the space needs for male or female inmates. Additionally, jail capacity varies throughout the day. These capacity calculations are based on 4 AM population counts.

On September 23, 2010, the Multnomah County Board of Commissioners adopted Resolution No. 2010-141 whereby if the number of inmates housed within the Multnomah County jail system reaches 95% of the population limit, a county jail population emergency will exist.



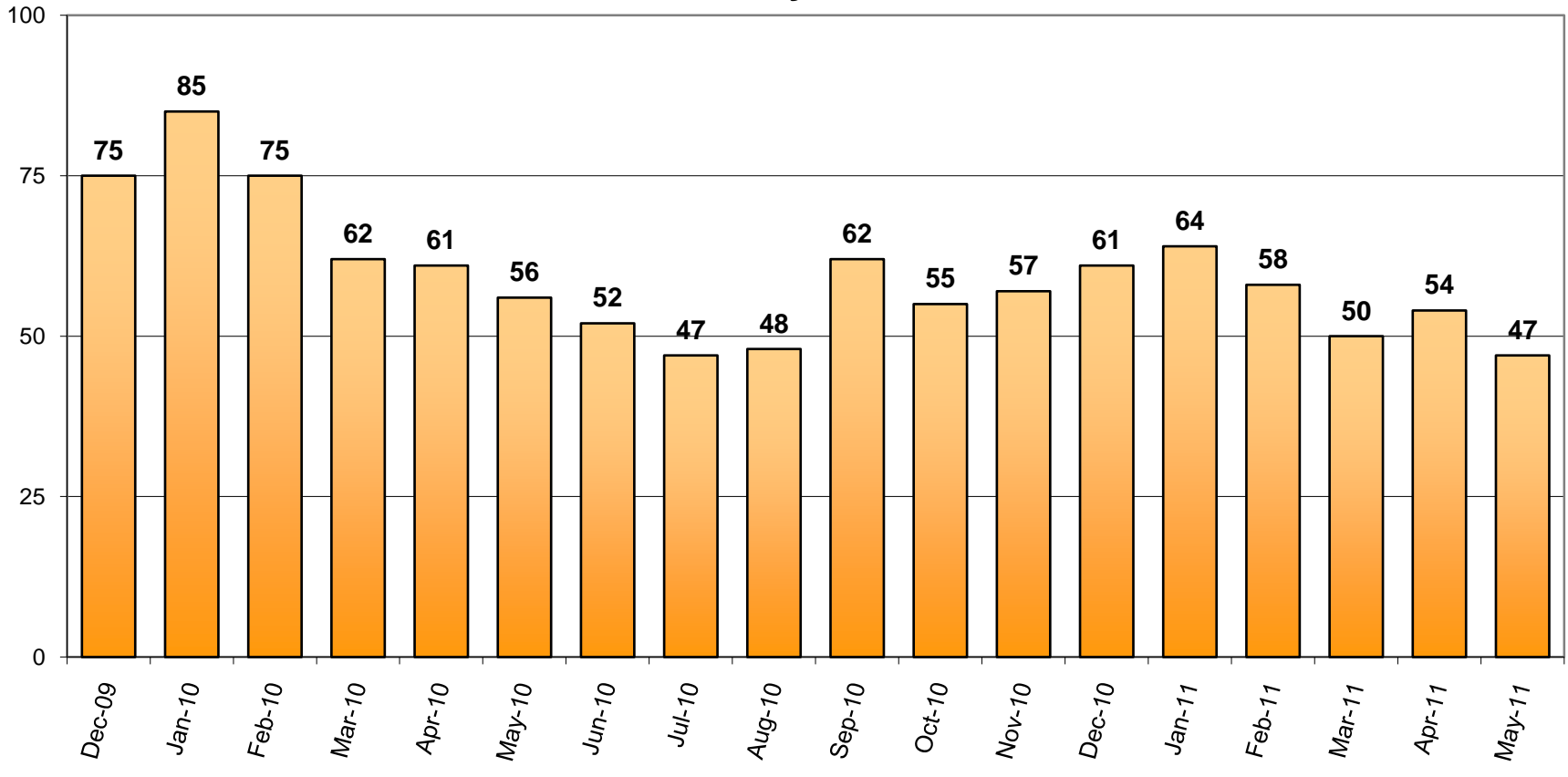
Pre-Trial vs. Post-Trial vs. Holds in Custody Average Daily Population



The average number of inmates jailed on holds decreased between March and April. The average number of post-trial and pre-trial inmates both increased during the same time period, although pre-trial inmates only increased by one.



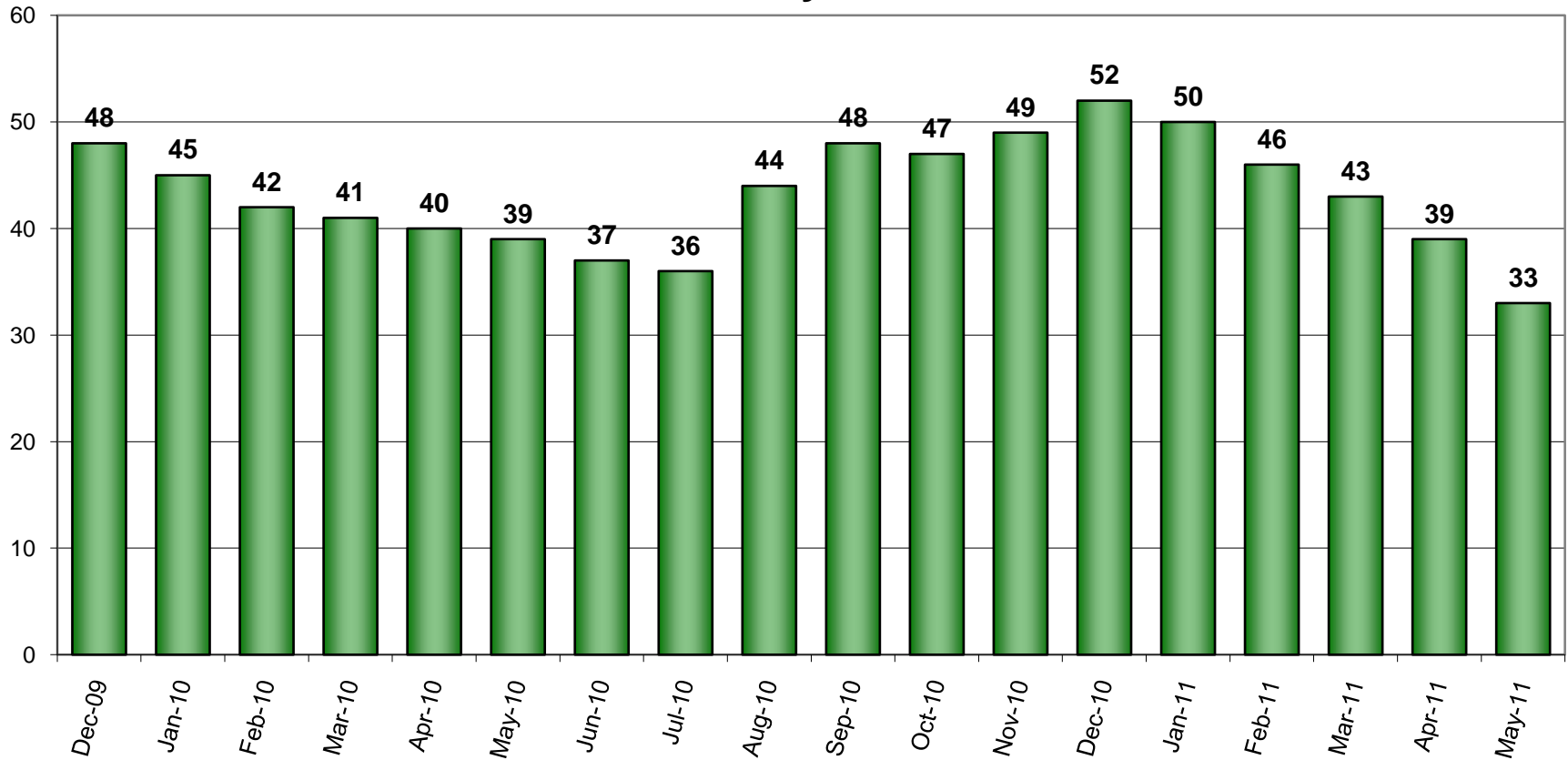
Count of Persons Held Pre-trial more than 150 Days on First Day of Month



The number of inmates jailed pre-trial more than 150 days was 47 on May 1, 2011.



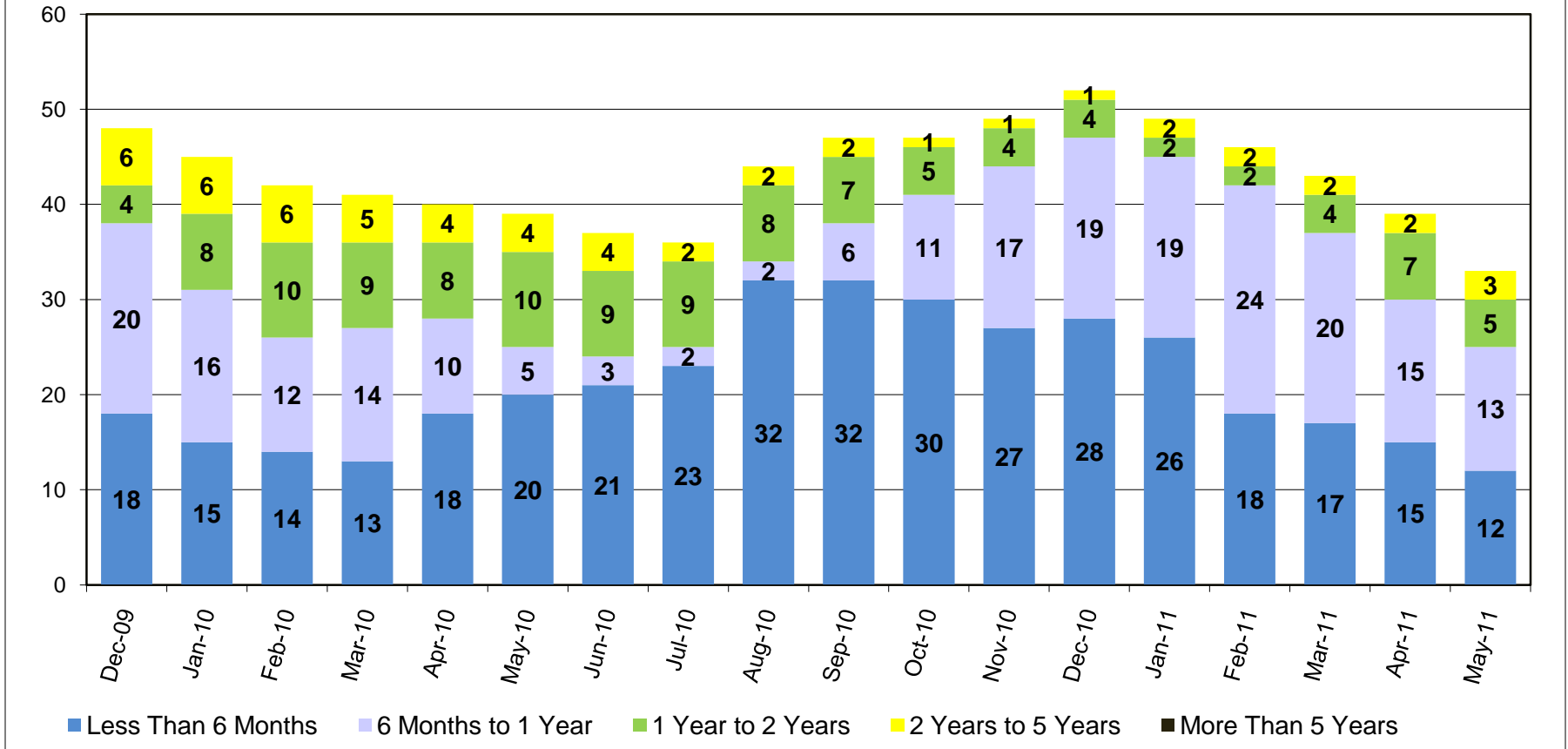
Count of Persons Held Pre-trial on Murder Related Charges on First Day of Month



On May 1, 2011, a total of 33 inmates accused of murder were being held pre-trial. This is the lowest number of the past 18 months.



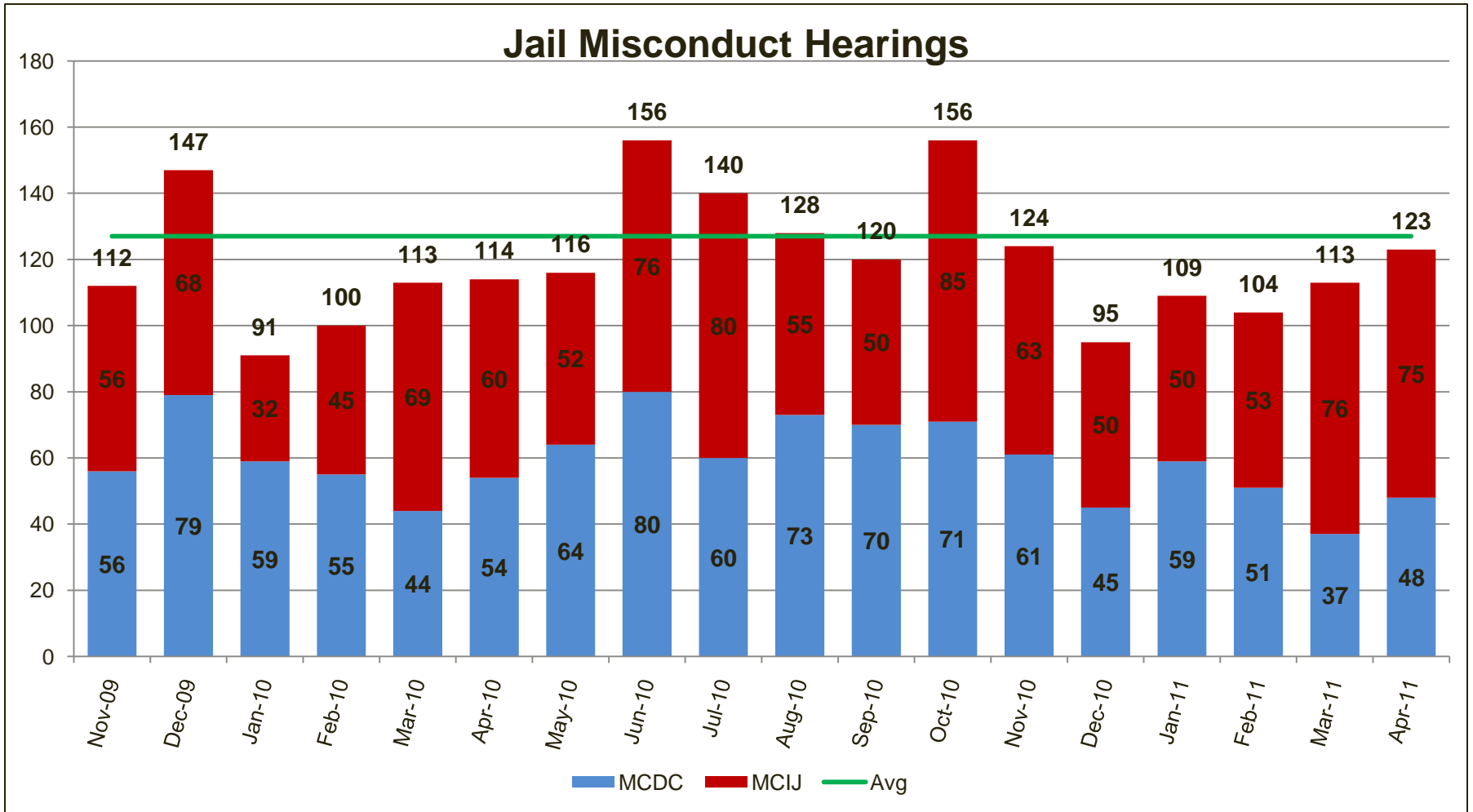
Count of Pre-trial persons with Murder Related Charges by Length of Stay on First Day of Month



As of May 1, 2011, there were eight inmates accused of murder and held pre-trial in jail for longer than one year.



Jail Misconduct Hearings



Tracking the number of misconduct hearings of inmates informs jail management on classification, housing, and other operational issues.



Special Analysis: US Jail Population Data

According to the Justice Department's Bureau of Justice Statistics (BJS) report, *Jail Inmates at Midyear 2010* (NCJ 233431), the U.S. local jail inmate population has declined for the second consecutive year. The jail population declined by 2.4 percent in the 12 months ending June 30, 2010.

The number of inmates dropped from 767,434 to 748,728. This follows a 2.3 percent decline in 2009. In addition, the jail incarceration rate in 2010 declined to 242 jail inmates per 100,000 U.S. residents—the lowest rate since 2003.

Nationally, the decline in jail inmates was mostly concentrated in large jail jurisdictions - those holding 1000 or more inmates. Among the 170 jail jurisdictions with 1,000 or more inmates on an average day, two-thirds reported a decline. Six jail jurisdictions reported a drop of more than 1000 inmates.

Los Angeles County, CA., with a drop of 3007 inmates, led the nation in overall decline in its inmate population during the 12 months ending June 30, 2010. Five other jail jurisdictions reported a decline of more than 1000 inmates during this period, including Maricopa County, AZ. (down 1196 inmates); Orange County, CA. (down 1,143); Philadelphia, PA. (down 1111); Fresno County, CA. (down 1105); and Harris County, TX (down 1096).

The average adult jail population in Multnomah County was 1274 during the 12 months ending June 30, 2010. The jail incarceration rate was 174 per 100,000 residents. This is an 8 percent decline from 2009.

For additional information about the Bureau of Justice Statistics' statistical reports and programs, please refer to the BJS website at <http://www.bjs.gov/>.



Emergency Population Release Appendix: Detailed Info on Monthly Forced Releases



No forced releases occurred during April 2011.

See previous reports for detailed information on monthly forced releases.

