

MULTNOMAH COUNTY SHERIFF'S OFFICE

Monthly Jail Report, September 2010



Multnomah County Sheriff's Office - Dan Staton, Sheriff
501 SE Hawthorne Blvd., Suite 350 Portland OR 97214
503-988-4300 (TTY 503-988-4500) www.mcso.us

Welcome to the Multnomah County Sheriff's Office Monthly Jail Report!

This report is a monthly publication of MCSO's Resource Analysis Unit. We are eager to hear any suggestions or feedback you may have. Please feel free to contact any one of us in the RAU:

David Braaksma
Markley Drake
Wendy Lin-Kelly
Lt. Jeff Wheeler

503-988-4300

September Summary (and reference page):

Standard bookings: 2909 (p. 3)

Average Length of Stay: 13.42 days (p. 8)

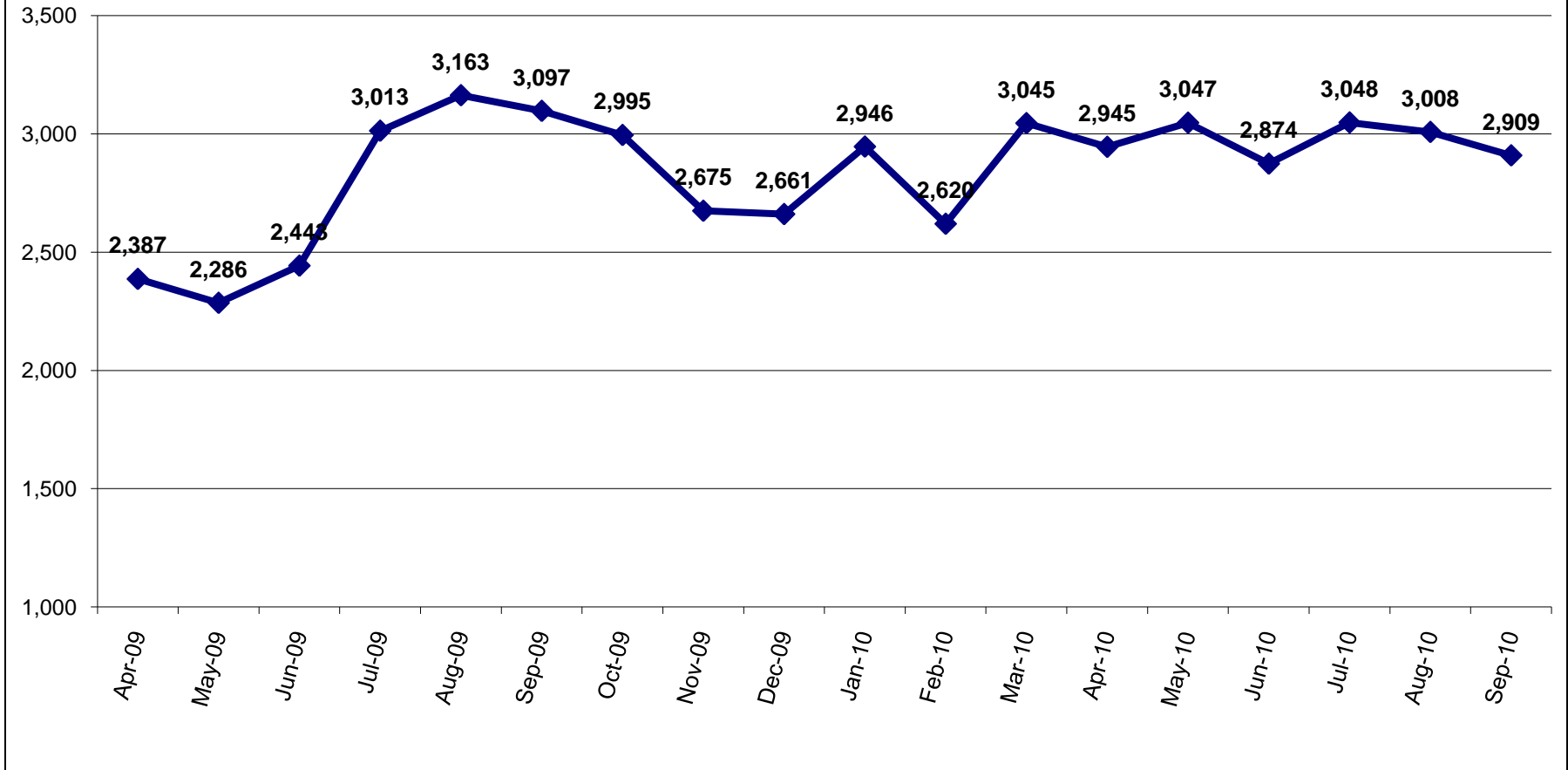
Capacity: 1310 beds (p. 10)

Average Daily Population: 1258, 96% of capacity (p. 10)

Forced Releases (Emergency Population Releases): 0 (p. 14)



Standard Bookings

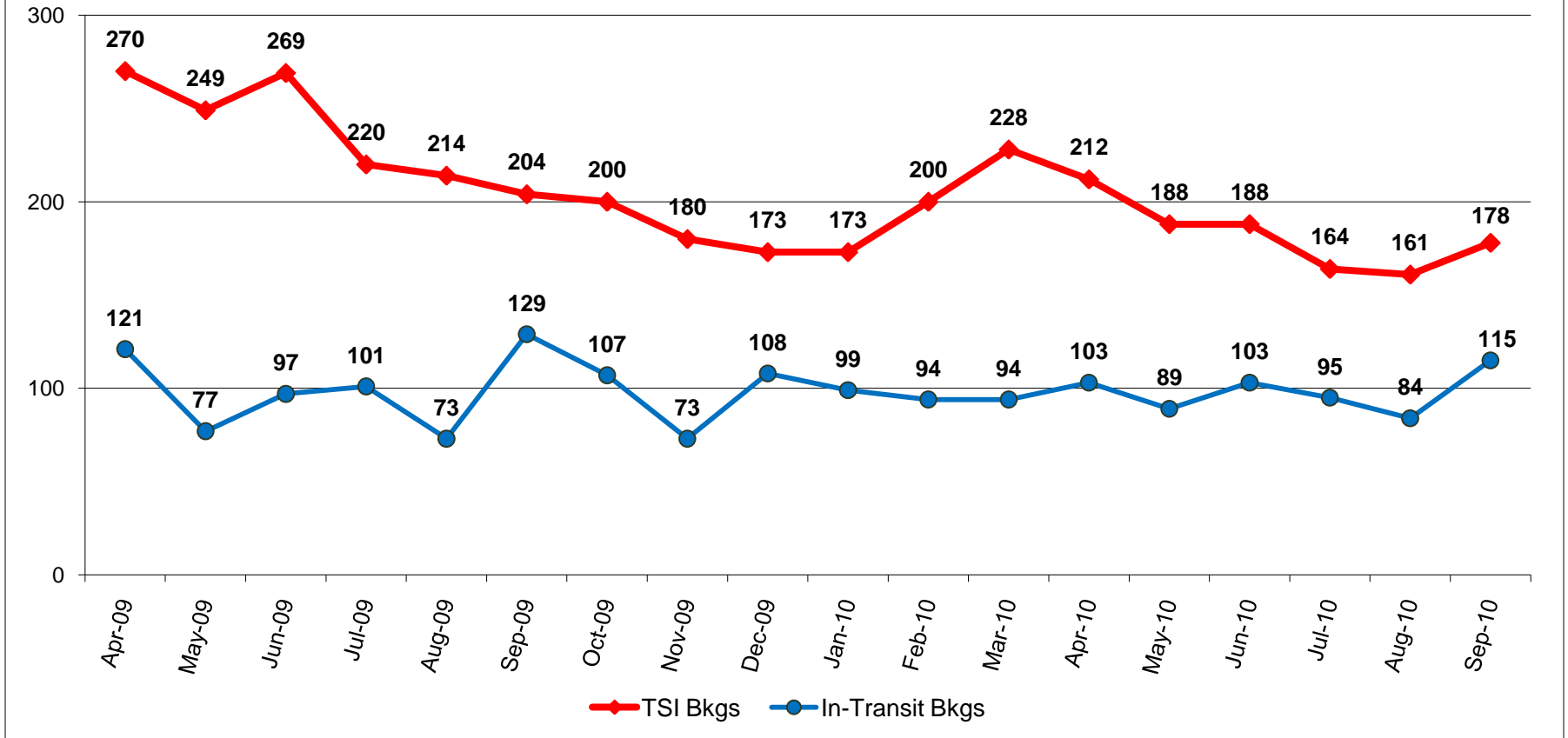


Standard bookings totaled 2909 in September 2010, averaging 97 bookings per day.



Exemplary Service for a Safe, Livable Community

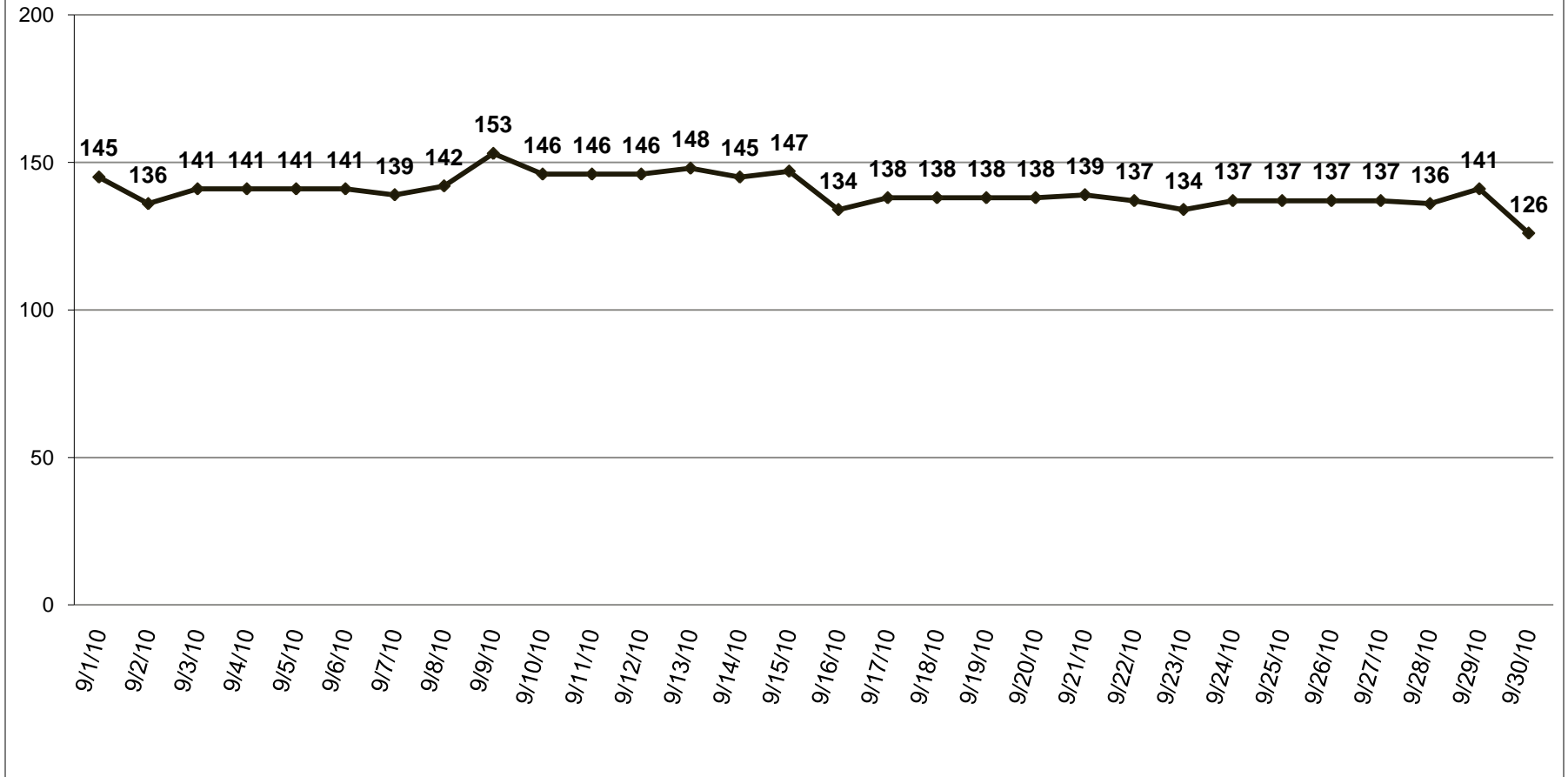
Turn-Self In and In-Transit Bookings



Turn-Self In (TSI) bookings are where an offender has been sentenced and ordered to return to jail at a later date. In-Transit bookings are of those being held for other jurisdictions while being transported. The number of TSI and In-Transit bookings both increased between August and September.



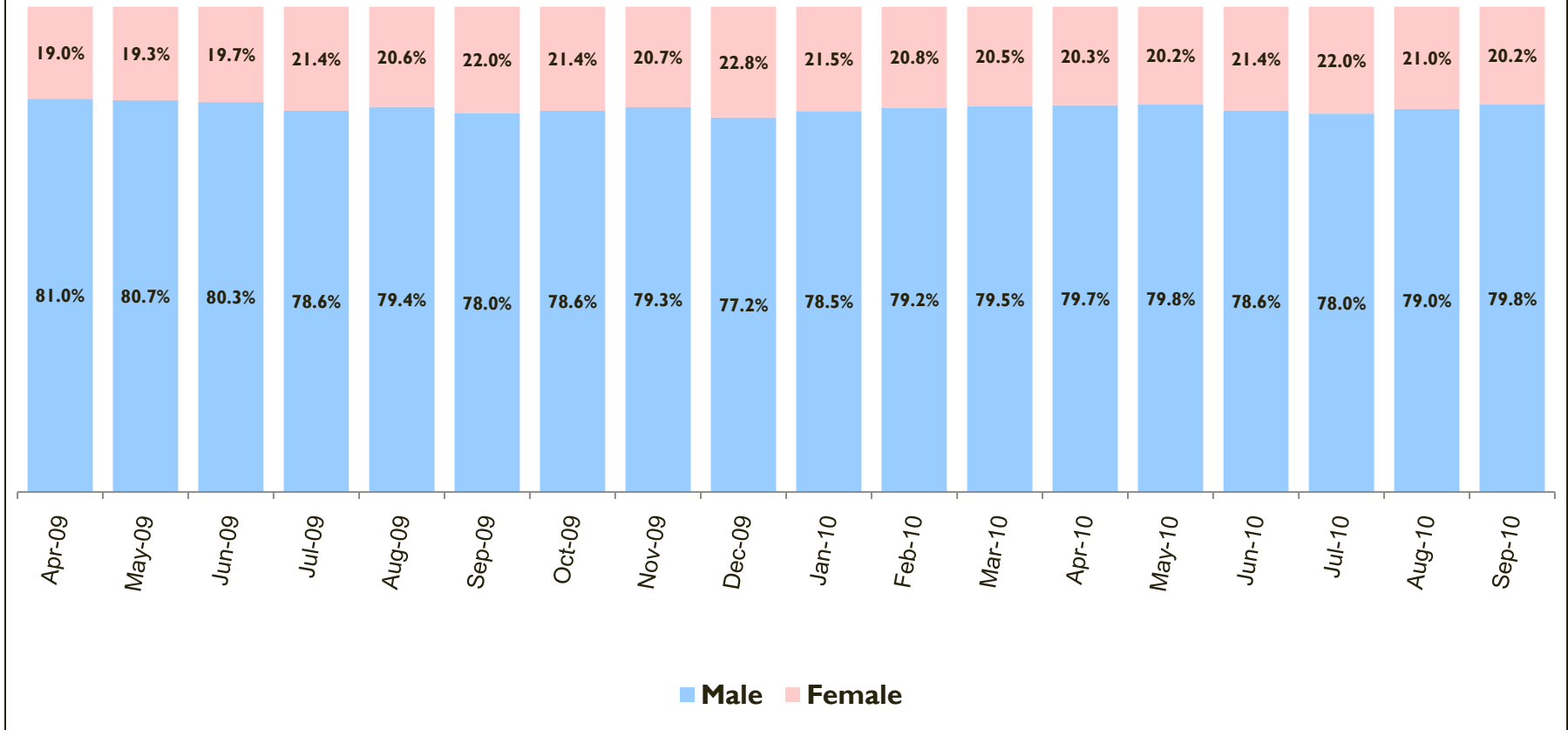
Daily Count of Exclusive U.S. Marshal Inmates



The US Marshal inmates averaged of 140 per day in September 2010.



Gender Composition of Bookings

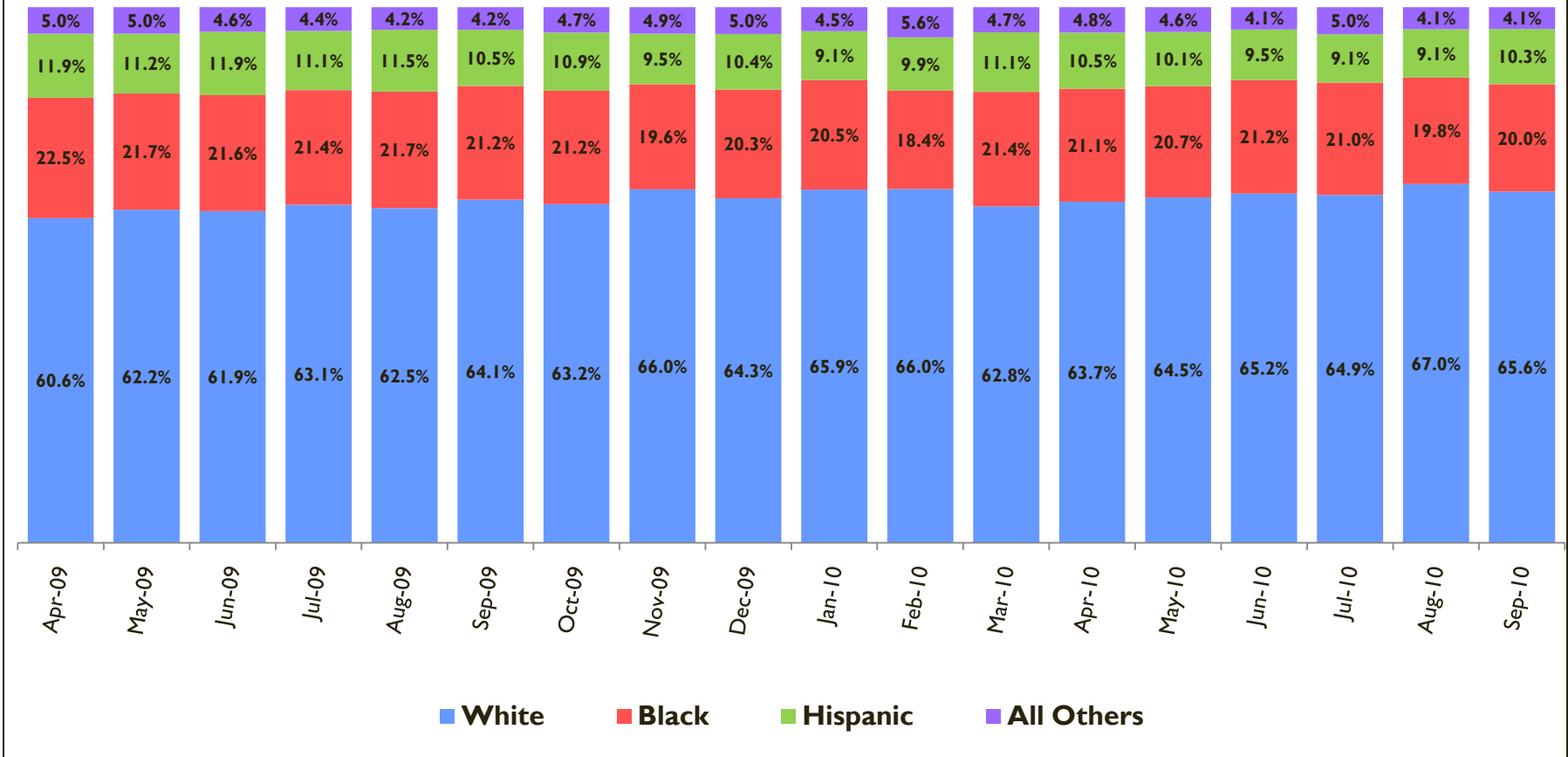


*Includes standard and TSI bookings.

The percent of females and males booked is typically between 18 - 22% and 78 - 82%, respectively.



Ethnic Composition of Bookings

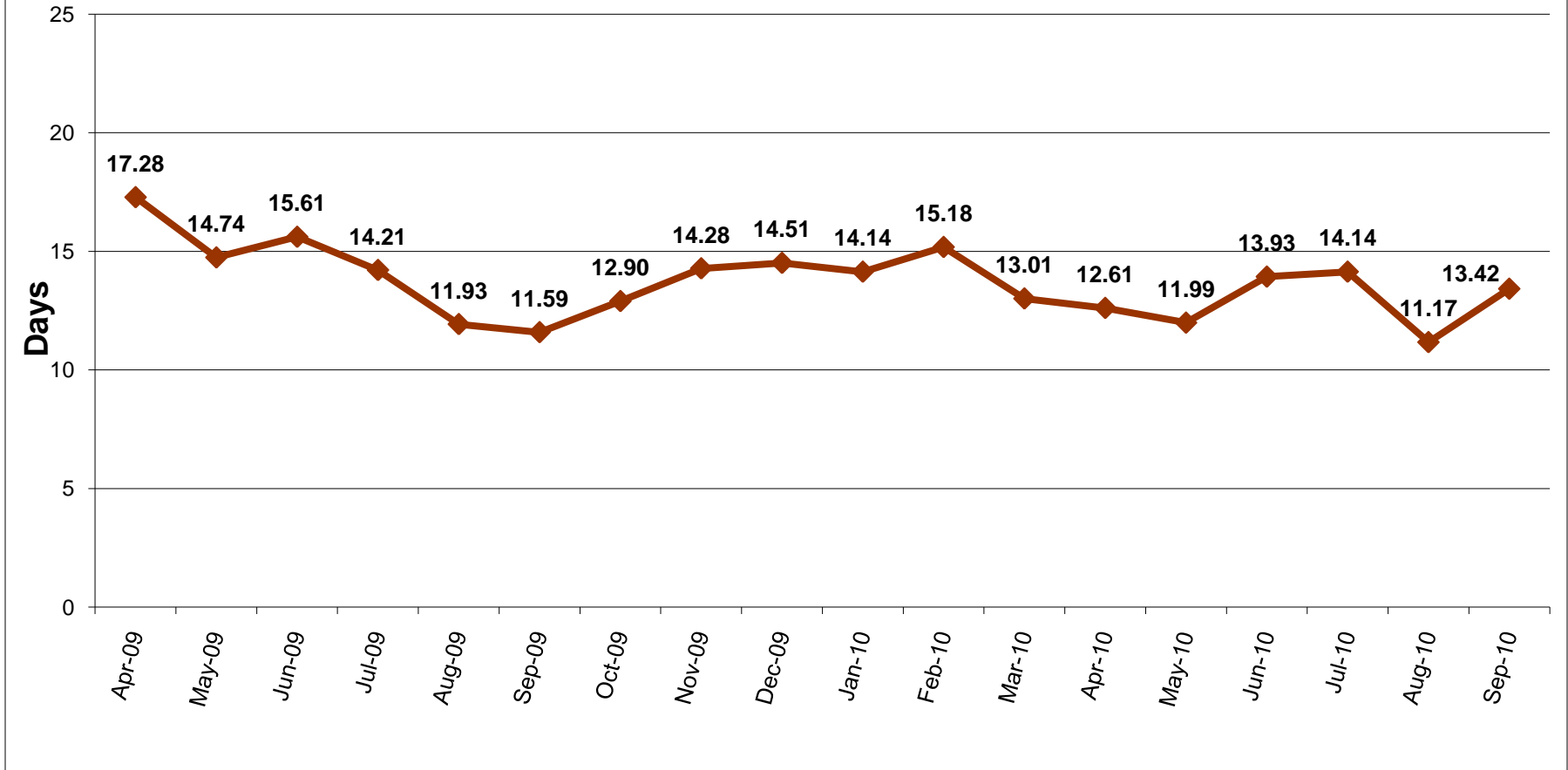


*Includes standard and TSI bookings.

In September 2010, almost 66% of bookings were of White offenders, 20% were Black, and 10% were Hispanic.



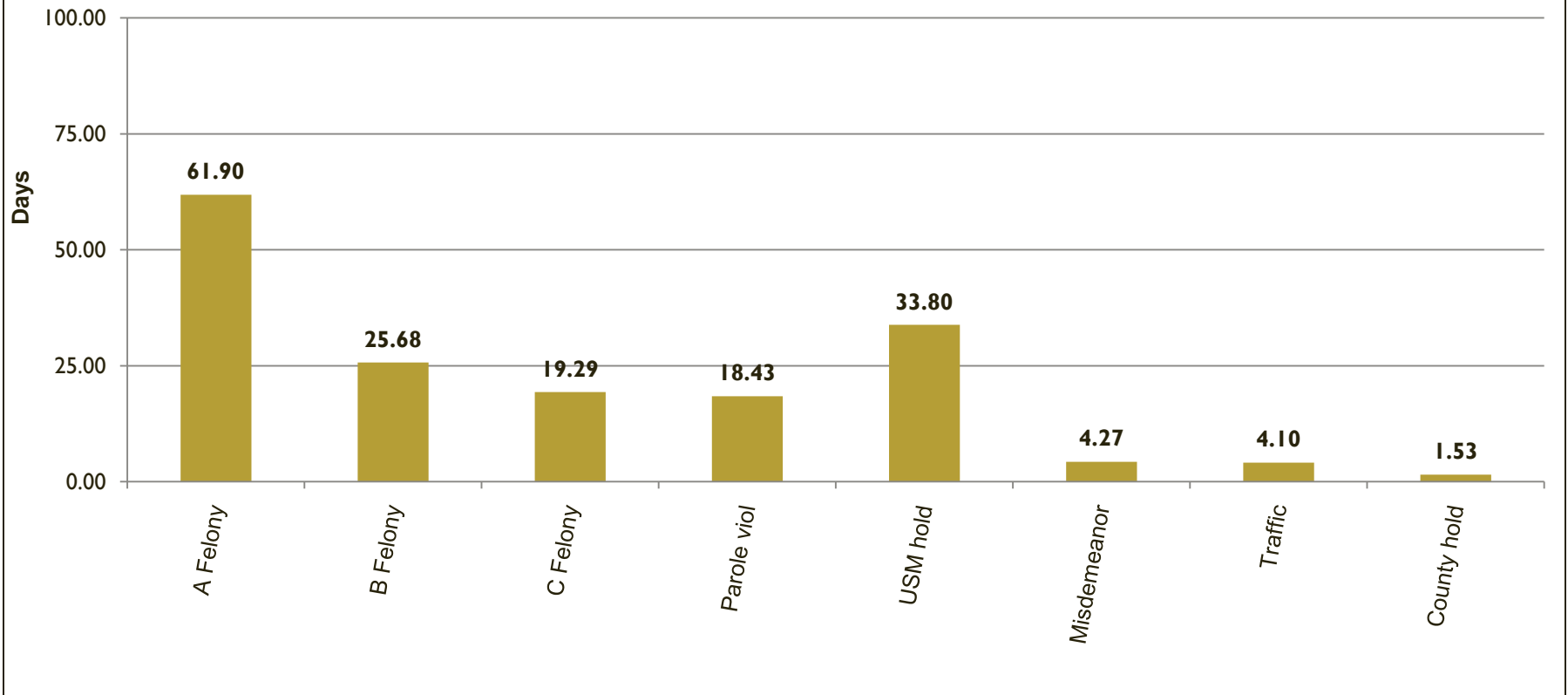
Average Length of Stay (in days)



After the low average length of stay (ALS) in August, the ALS increased by 2.25 days to 13.42 days for inmates released in September.



Average Length of Stay by Charge Priority (for inmates released during the month)

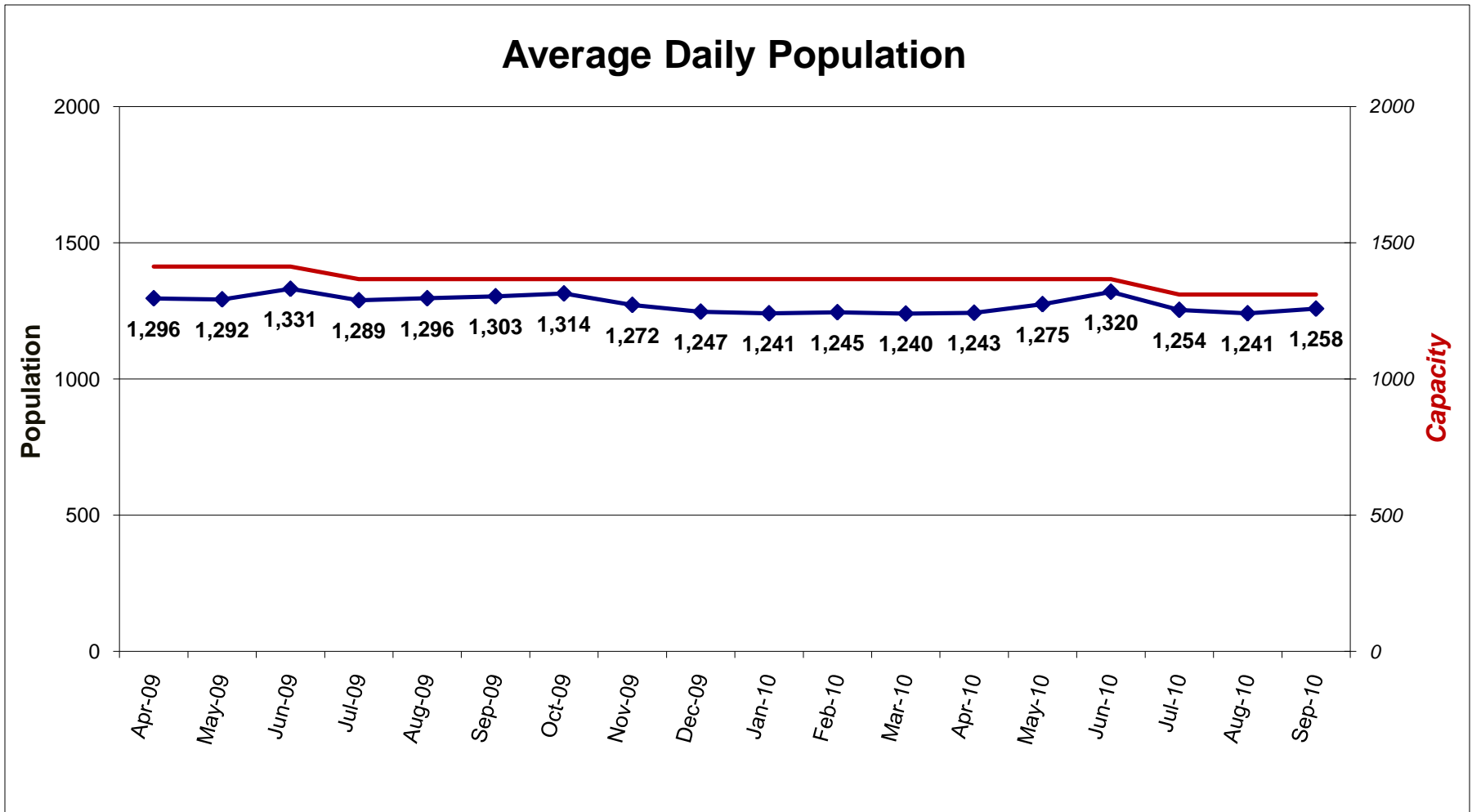


*Data based on primary or most serious charge, regardless of status of the case.

Almost 39% of releases in September were for misdemeanor charges where the average length of stay was 4.27 days. Felony charges were 30% of releases and had an average length of stay of 26.40 days.



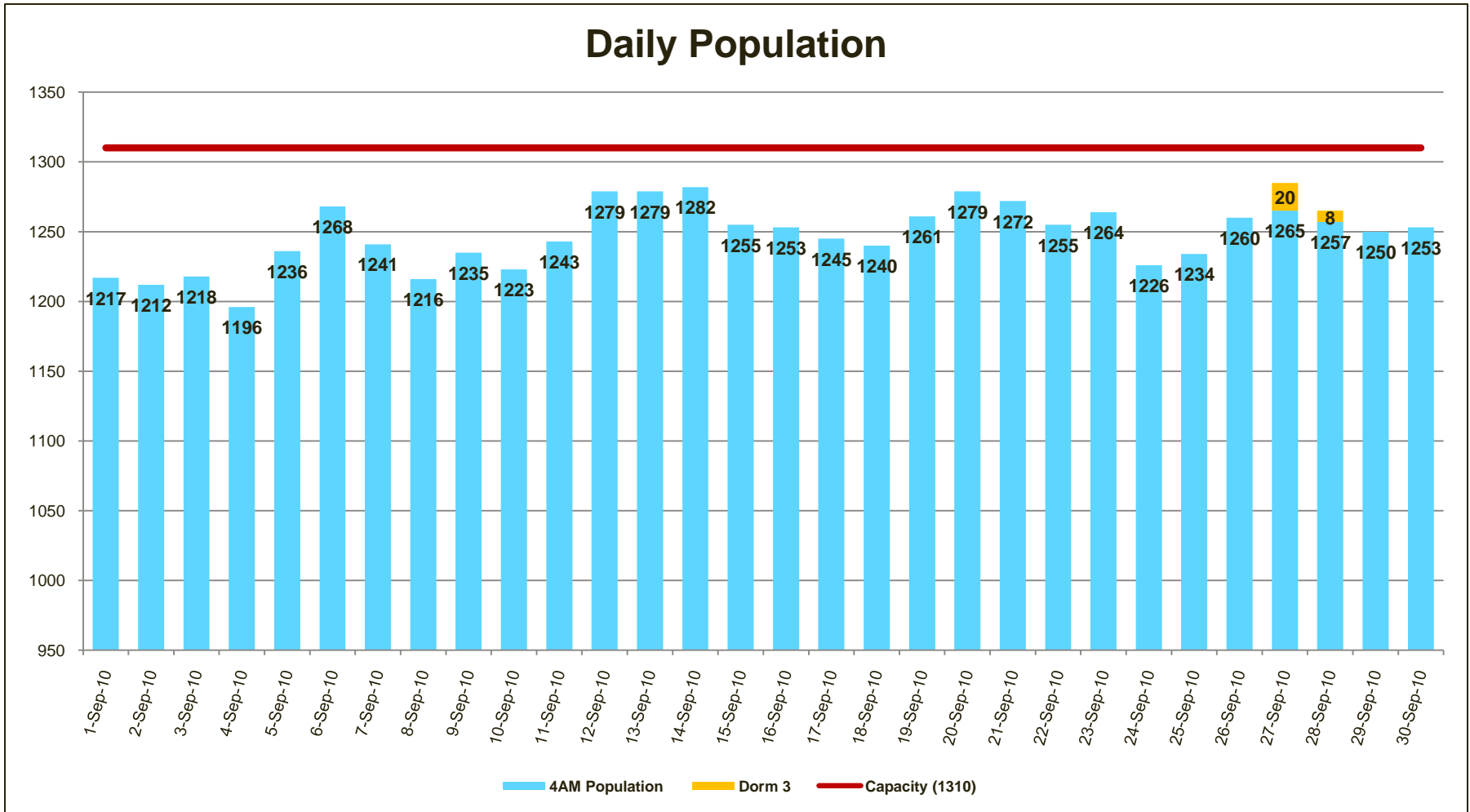
Average Daily Population



On July 1, 2010, the capacity of Multnomah County's two jail facilities was reduced from 1367 to 1310. The average daily population in September was 1258, which is 96% of capacity.



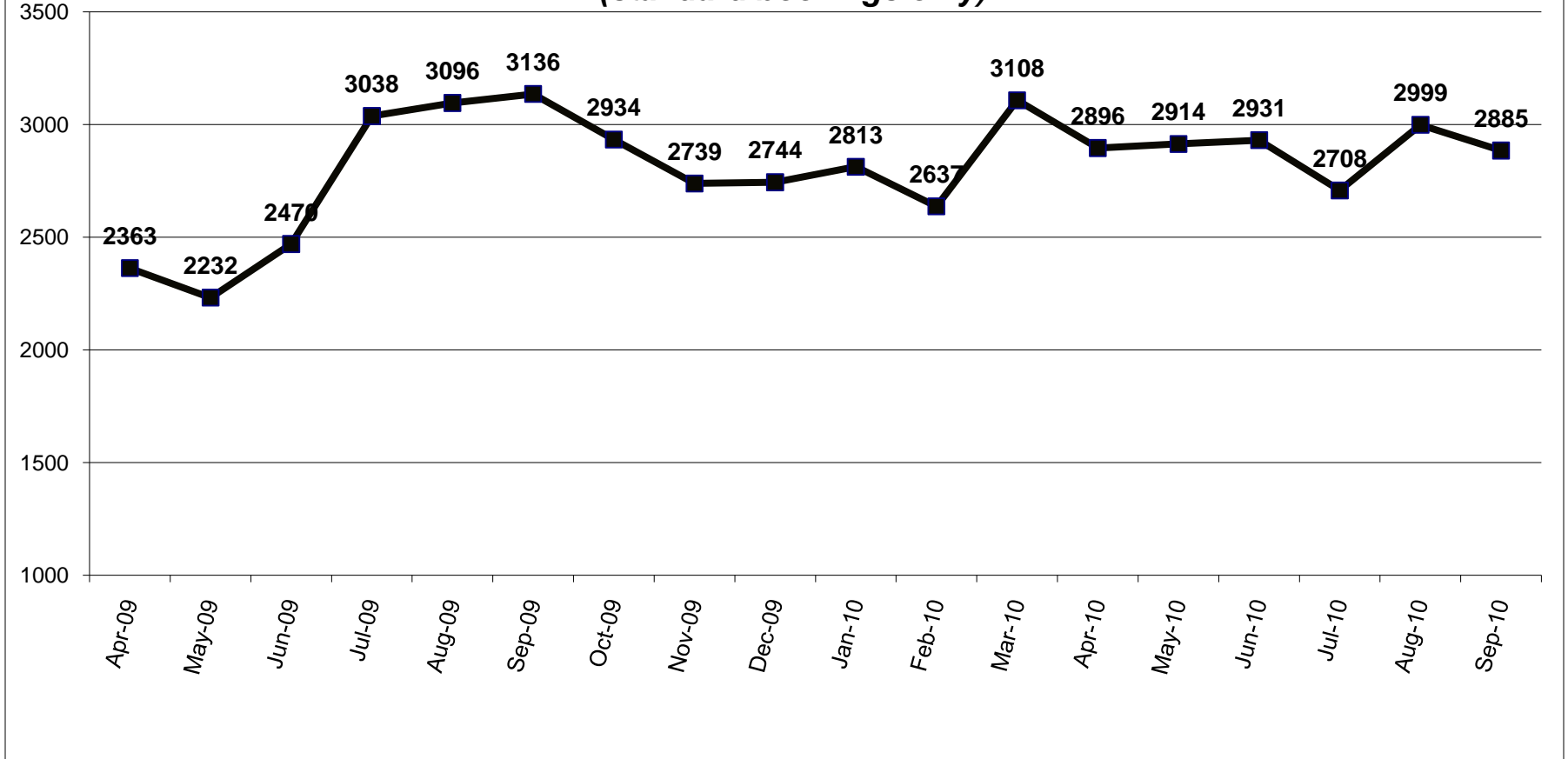
Daily Population



On September 17, 2010, the MCIJ Jail Commander issued Special Order 10-29 which established a process whereby Dorm 3 could be opened to avoid conducting Emergency Population Releases. Per the 4AM inmate count, Dorm 3 was occupied on September 27 (20 inmates) and September 28 (8 inmates).



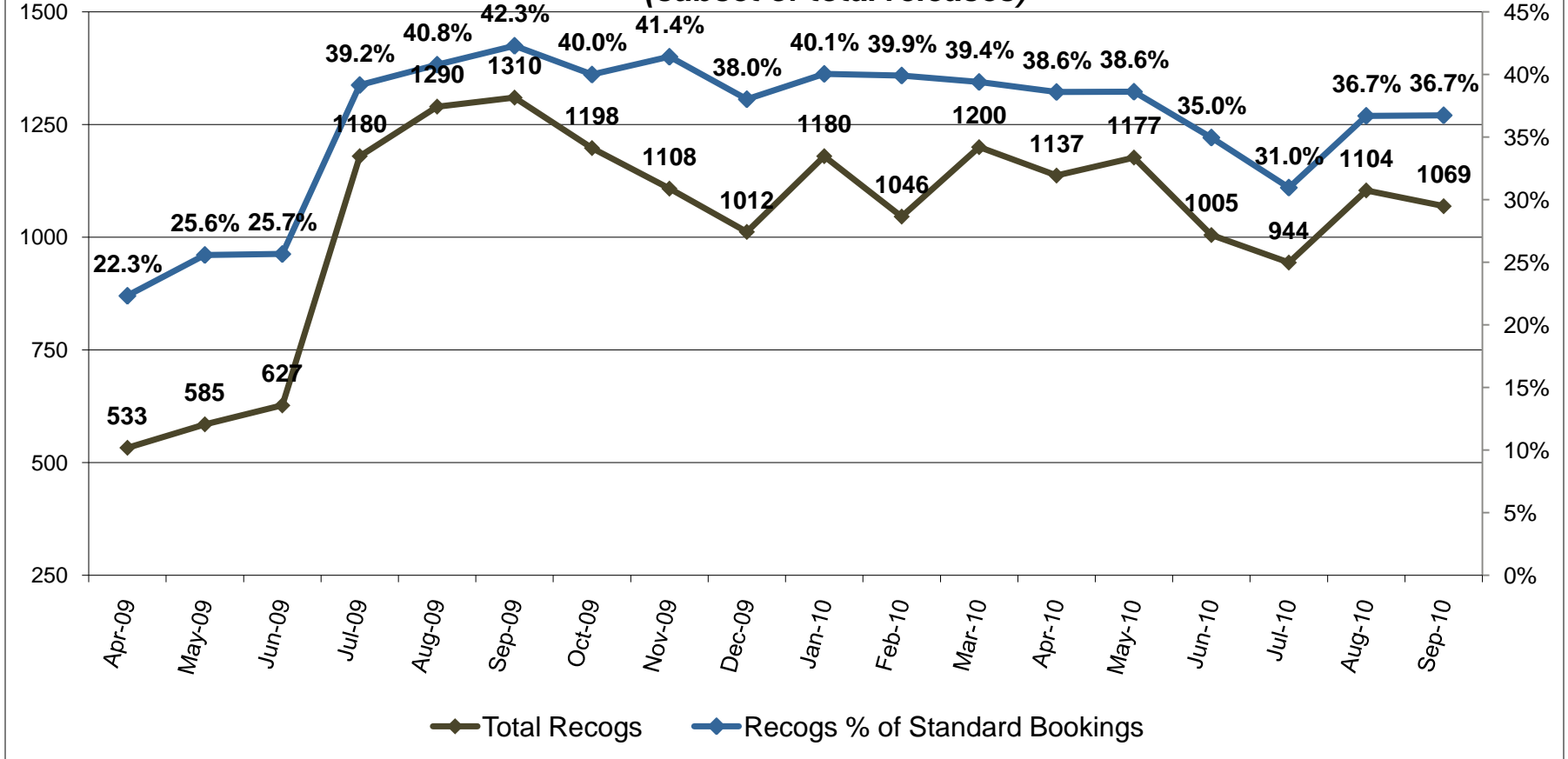
Total Releases (standard bookings only)



Releases among standard bookings averaged 96 per day in September.



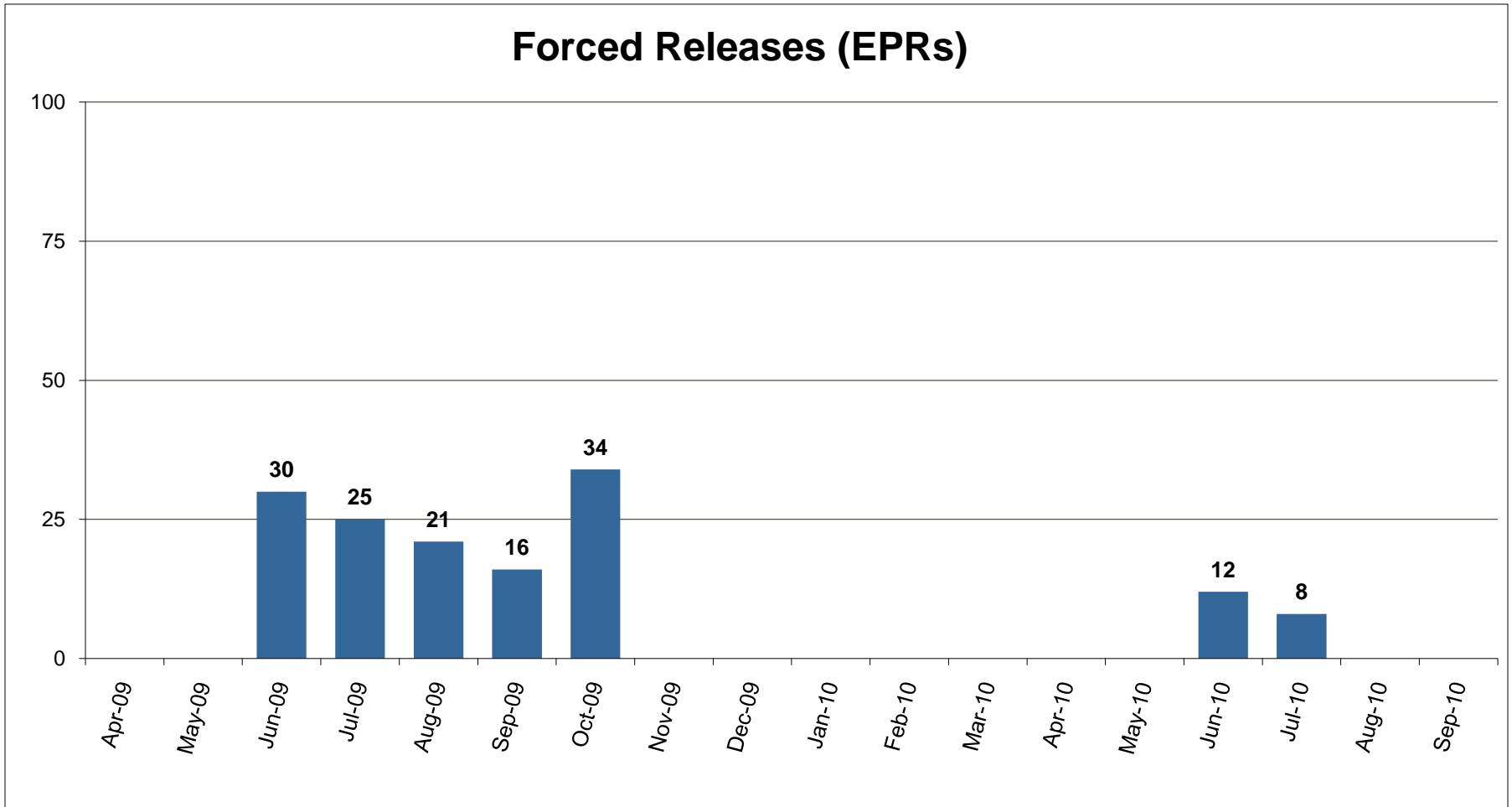
Recognizance Releases (subset of total releases)



Recognizance releases averaged 35.6 per day for both August and September 2010. The percentage of recognizance releases to standard bookings remained the same between August and September at 36.7%.



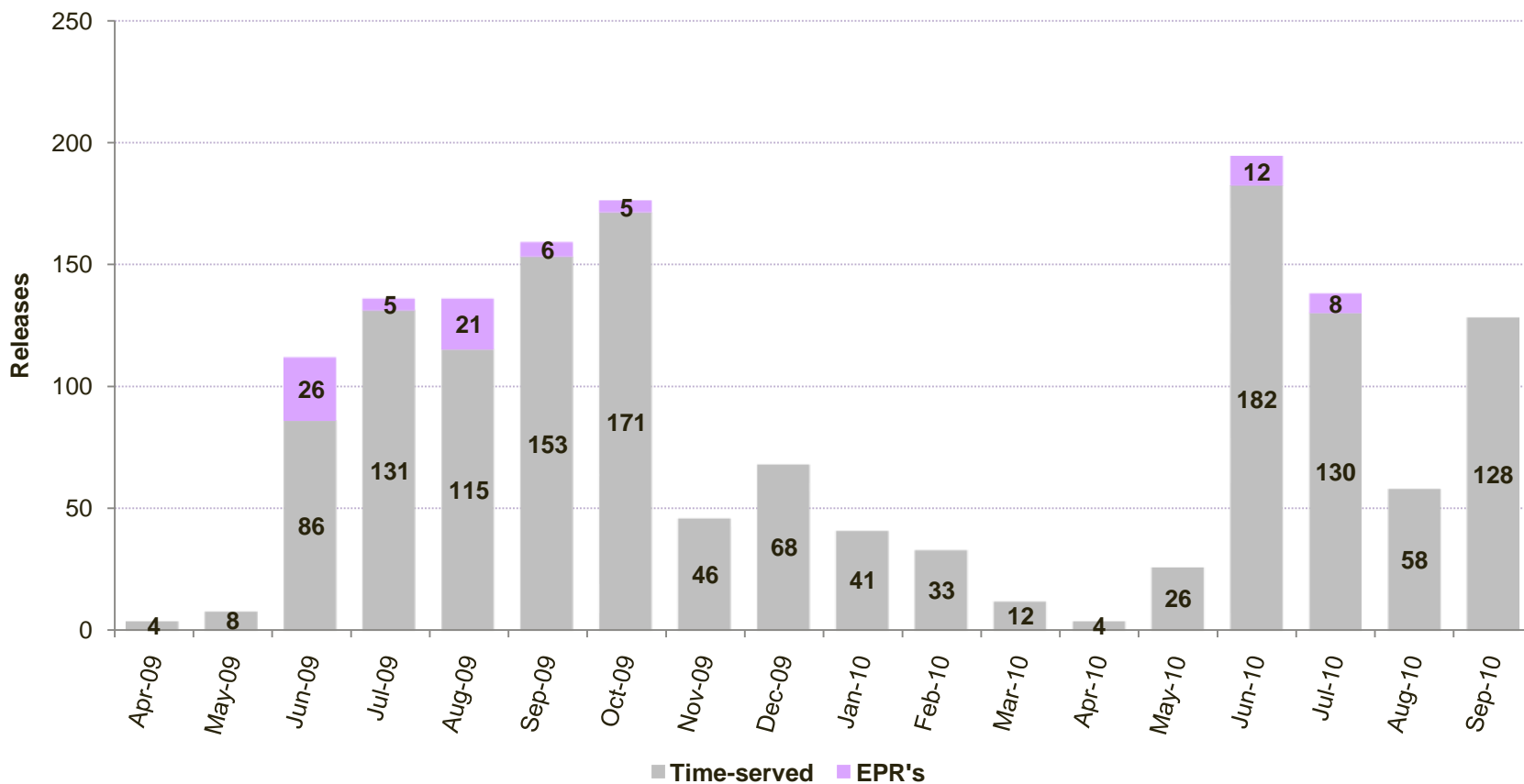
Forced Releases (EPRs)



*Forced releases may occur per Multnomah County Board Resolution 04-135 as part of the jail capacity management plan.
There were no forced releases in September 2010.



Releases between 12 AM and 8 AM*

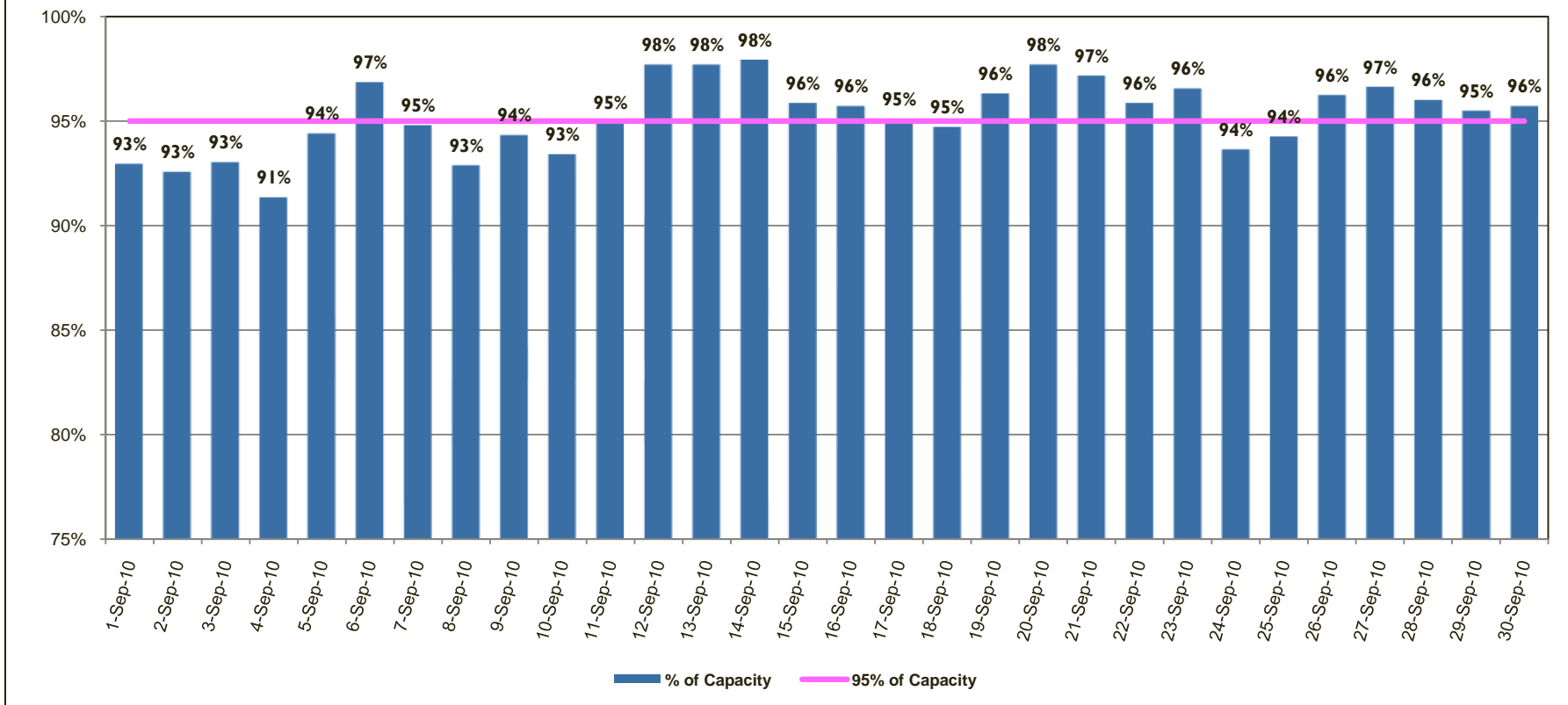


*Non-discretionary court-ordered and recognizance releases are not included.

In September 2010, 128 time-served inmates were released from jail between the hours of 12AM and 8AM. These inmates were released when the availability of public services is limited.



Percentage of Capacity by Day*

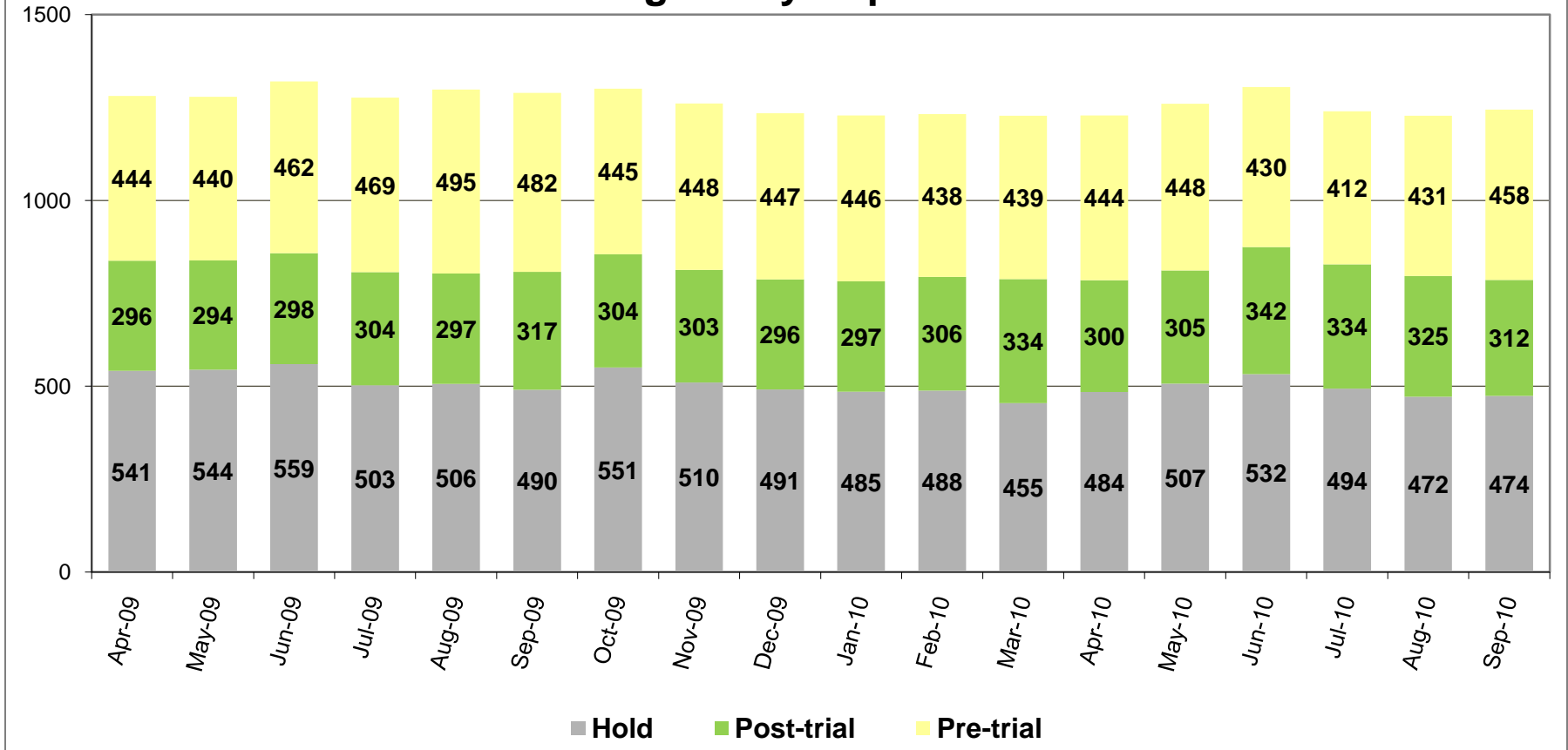


*Red bars indicate days on which EPRs occurred, if any. EPRs do not always or only occur when capacity exceeds the 95% threshold. Efforts are made to balance the population to the demands of the classification system for specific types of jail beds and balance the space needs for male or female inmates. Additionally, jail capacity varies throughout the day. These capacity calculations are based on 4 AM population counts.

On September 23, 2010, the Multnomah County Board of Commissioners adopted Resolution No. 2010-141 whereby if the number of inmates housed within the Multnomah County jail system reaches 95% of the population limit, a county jail population emergency will exist. This percentage was reduced from 97% due to the relatively low jail population limit of 1310.



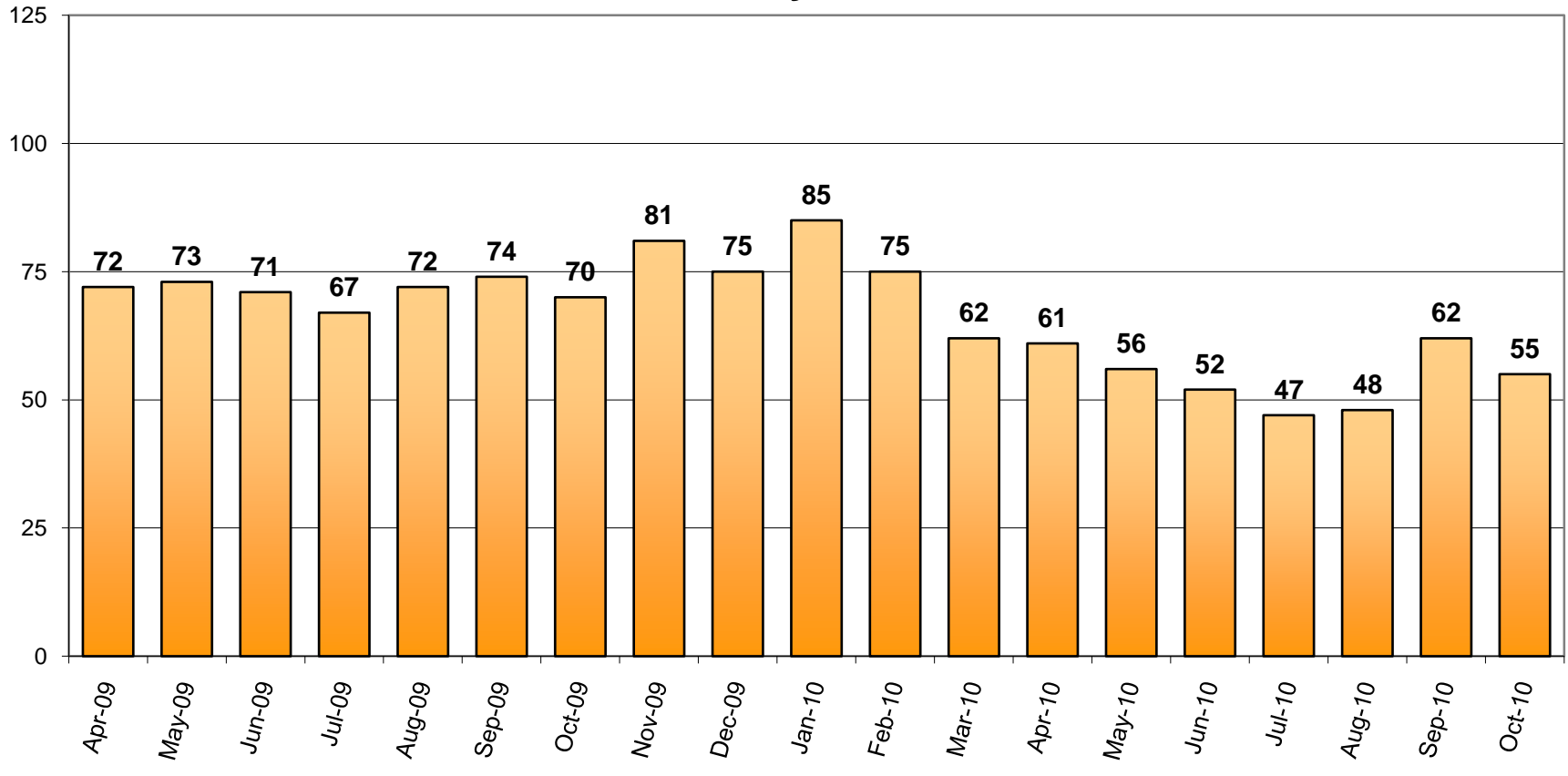
Pre-Trial vs. Post-Trial vs. Holds in Custody Average Daily Population



The average number of inmates jailed post-trial decreased from 325 to 312 between August and September 2010. The average number of pre-trial inmates was 458, the highest since September 2009.



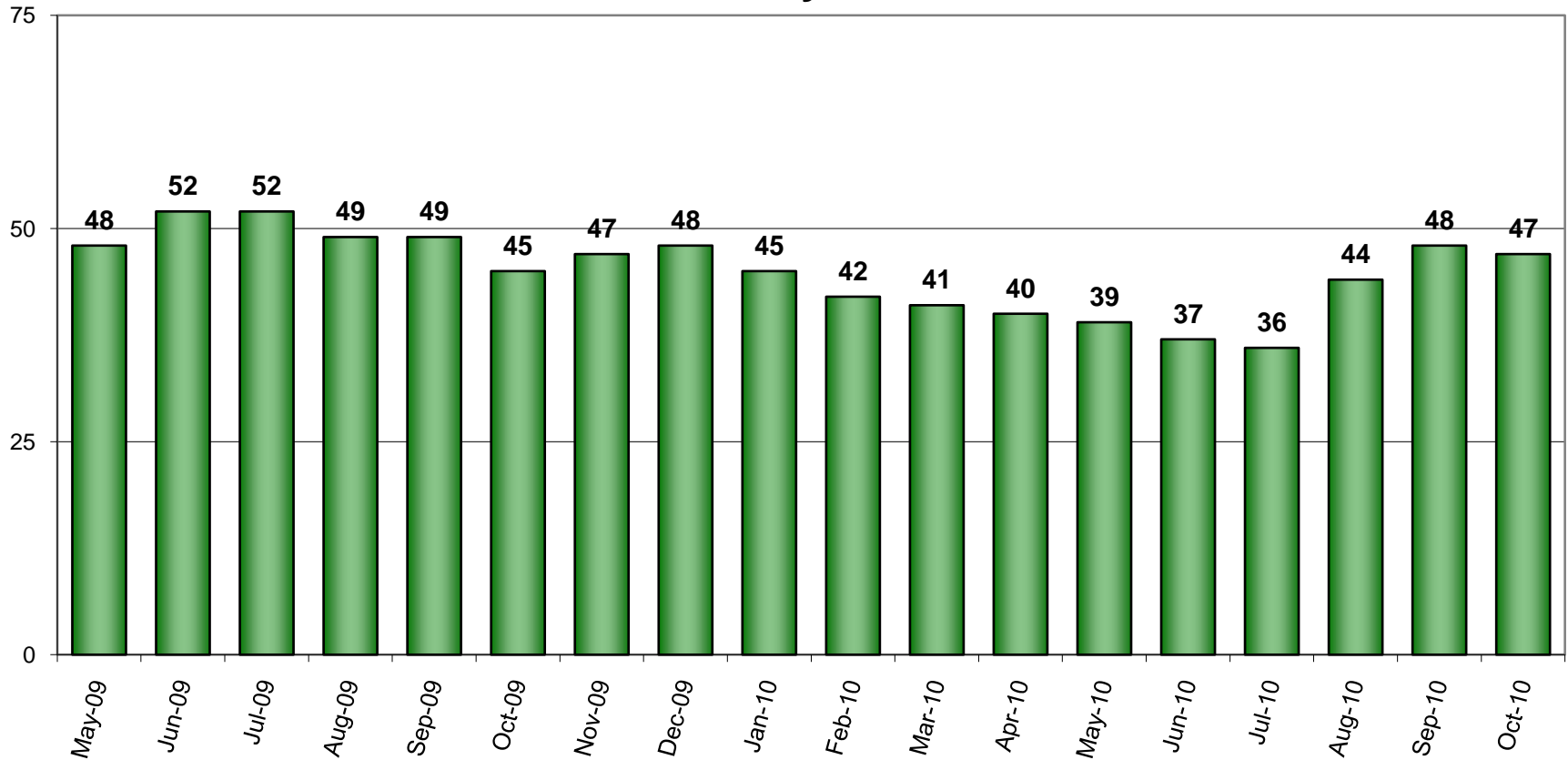
Count of Persons Held Pre-trial more than 150 Days on First Day of Month



The number of inmates jailed pre-trial more than 150 days was 55 on October 1, 2010, 7 lower than September 1, 2010.



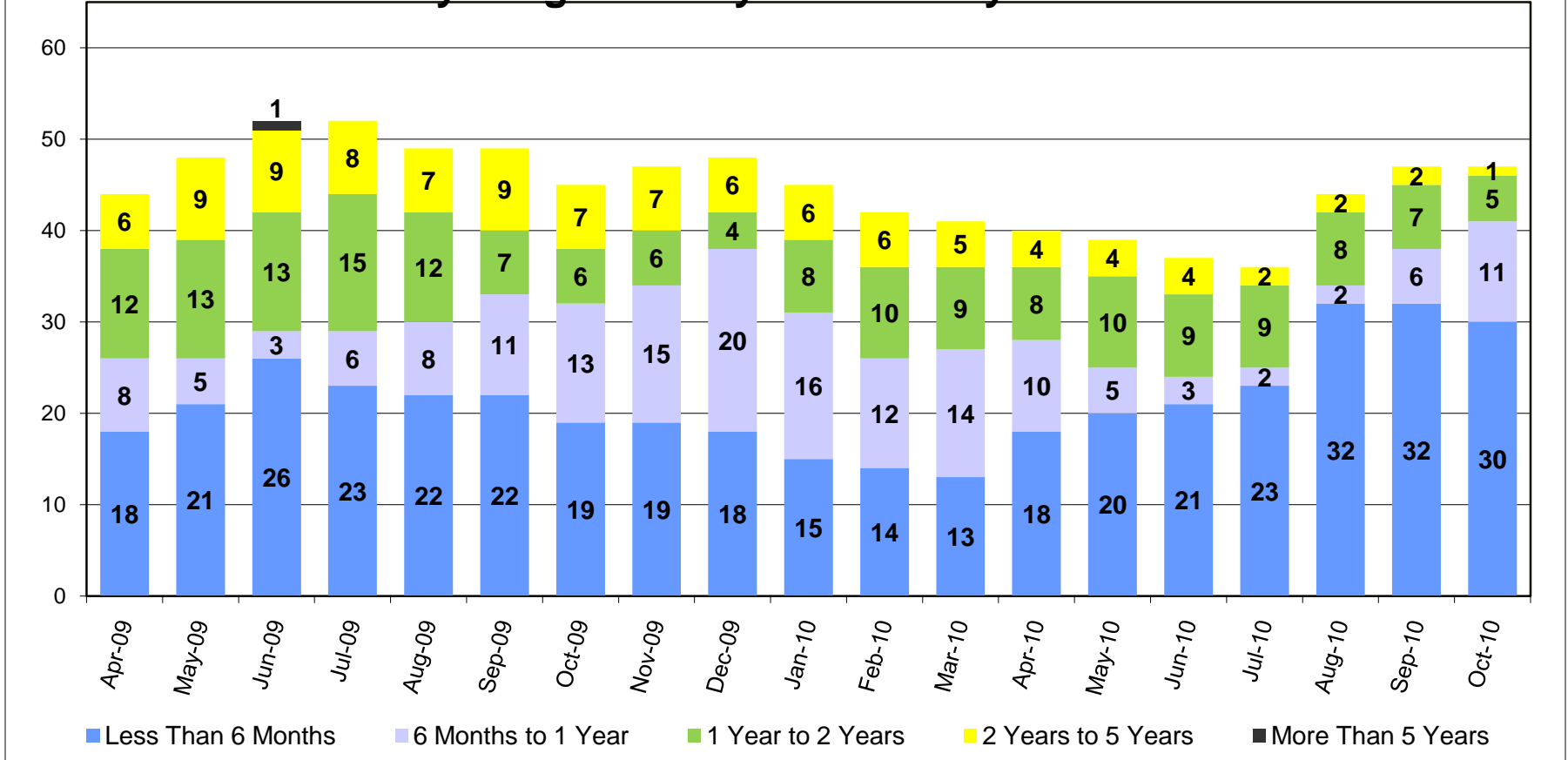
Count of Persons Held Pre-trial on Murder Related Charges on First Day of Month



On October 1, 2010, a total of 47 inmates accused of murder were being held pre-trial.



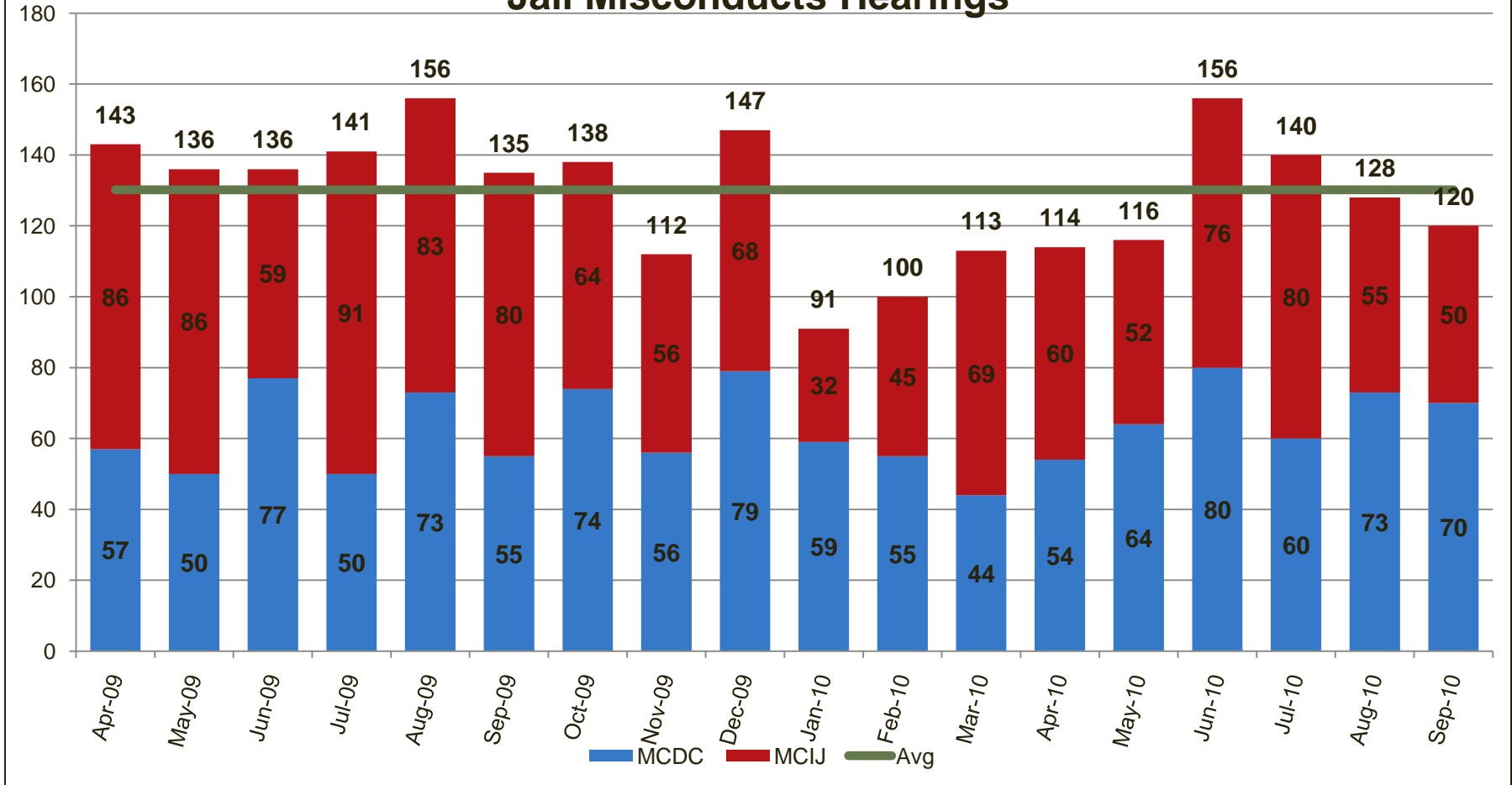
Count of Pre-trial persons with Murder Related Charges by Length of Stay on First Day of Month



As of October 1, 2010, there were six inmates accused of murder and held pre-trial in jail for longer than one year.



Jail Misconducts Hearings



As the jail capacity decreases and housing options become more limited, there are increased challenges in managing the inmate population. Tracking misconducts of inmates informs jail management on classification, housing, and other operational issues.



Monthly Special Analysis: Understanding Turn-Self In Bookings

Each month, this report presents data on three different booking types : standard, in-transit and turn-self In.

What exactly is a turn-self in booking?

The turn-self in program (TSI) allows the Court to manage sentencing with some flexibility. It enables the Judges to still impose the punishment of jail time on a convicted criminal, while providing the individual the opportunity to maintain employment, family, and other obligations important to every day life.

The program provides a benefit to the jail system, too. TSIs serving time on Saturdays and Sundays at the Courthouse jail are not counted in the jail bed count and therefore, do not figure into the calculations for Forced Releases. In addition, since the Sheriff's Office manages the TSI surrender dates, these dates can be spread out in an effort to maximize jail bed usage.

Typical charges for individuals in the TSI program are DUII and drug crimes, although the charges can vary, as many factors, beyond the charge, determine who receives this sentencing option.

So, how does TSI booking work?

At sentencing, the judge orders a TSI participant to report to jail at a later date. This person works with staff at the MCSO Corrections Records "Turn-Self In" desk and schedules a day (or dates) to surrender to jail to complete his/her sentence. The two options for the TSI program are "short stays" and "straight time."

Short stays are defined by any of the following court imposed conditions: sentence is to be served on weekends; sentence is to be served in multiple increments of 4 days or less; or, sentence to be served is 4 days or less. Straight time defined by either of the following court imposed conditions: sentence is to be served in multiple increments of 5 days or more ; or, sentence is to be served at one time AND is longer than 5 days. About 87% of TSIs are short stays and 13% are straight time. Short stays can be served at MCDC during the week or at the Courthouse jail on weekends. Straight time is served at MCIJ or MCDC.

Emergency Population Release Appendix: Detailed Info on Monthly Forced Releases



No forced releases occurred during September 2010.

See previous reports for detailed information on monthly forced releases.

