

*Multnomah County Sheriff's Office*

**Monthly Jail Statistics Report  
March 2009**

**APRIL 9, 2009**



**Bob Skipper  
SHERIFF**

**503 988-4300 PHONE  
503 988-4500 TTY**

[www.mcso.us/public/](http://www.mcso.us/public/)

**501 SE HAWTHORNE BLVD., Suite 350 • Portland, OR 97214**

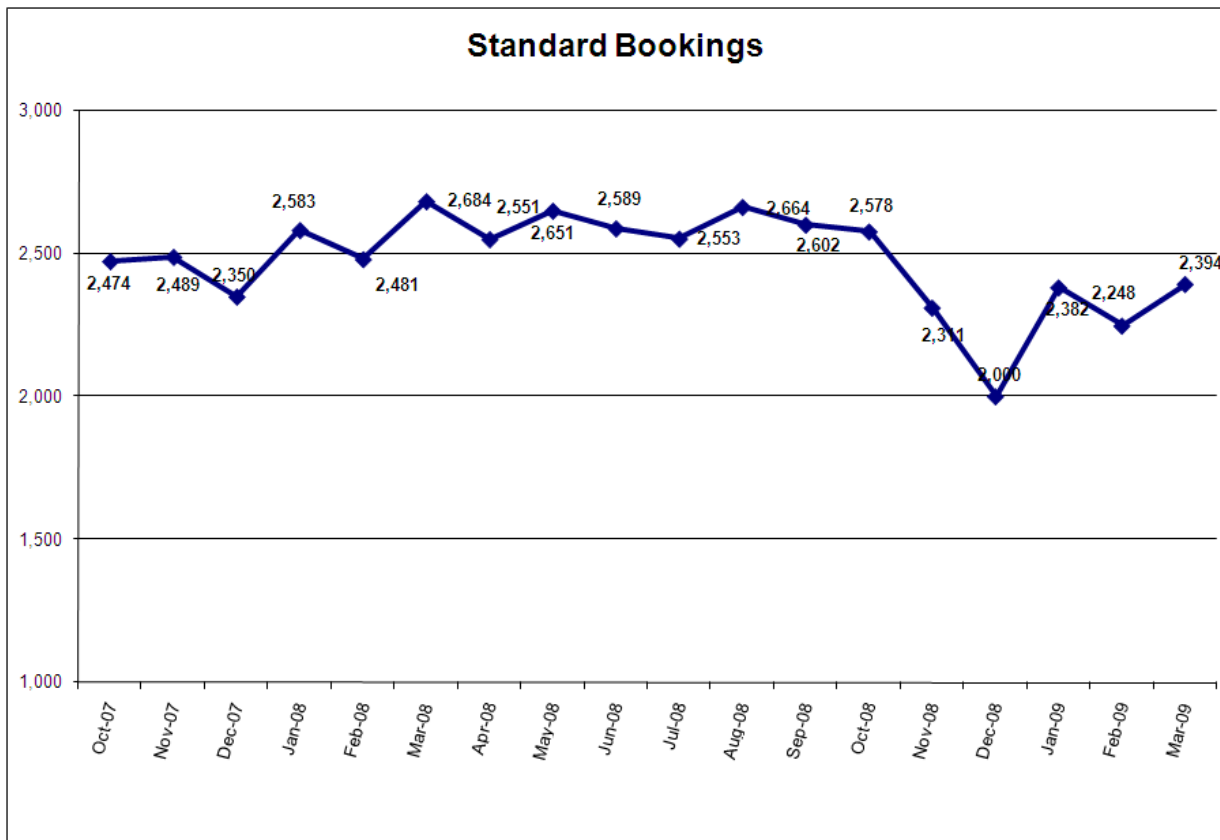
## Multnomah County Monthly Jail Statistics March 2009

On March 8 total inmate capacity was reduced from 1539 to 1413 due to budget reductions. There were 2394 standard bookings during the month, a small increase over February. Turn-self-in (TSI) bookings also increased modestly in March, while Cite & ID and in-transit bookings declined slightly. Bookings under Project 57 saw a small increase for the third month in a row.

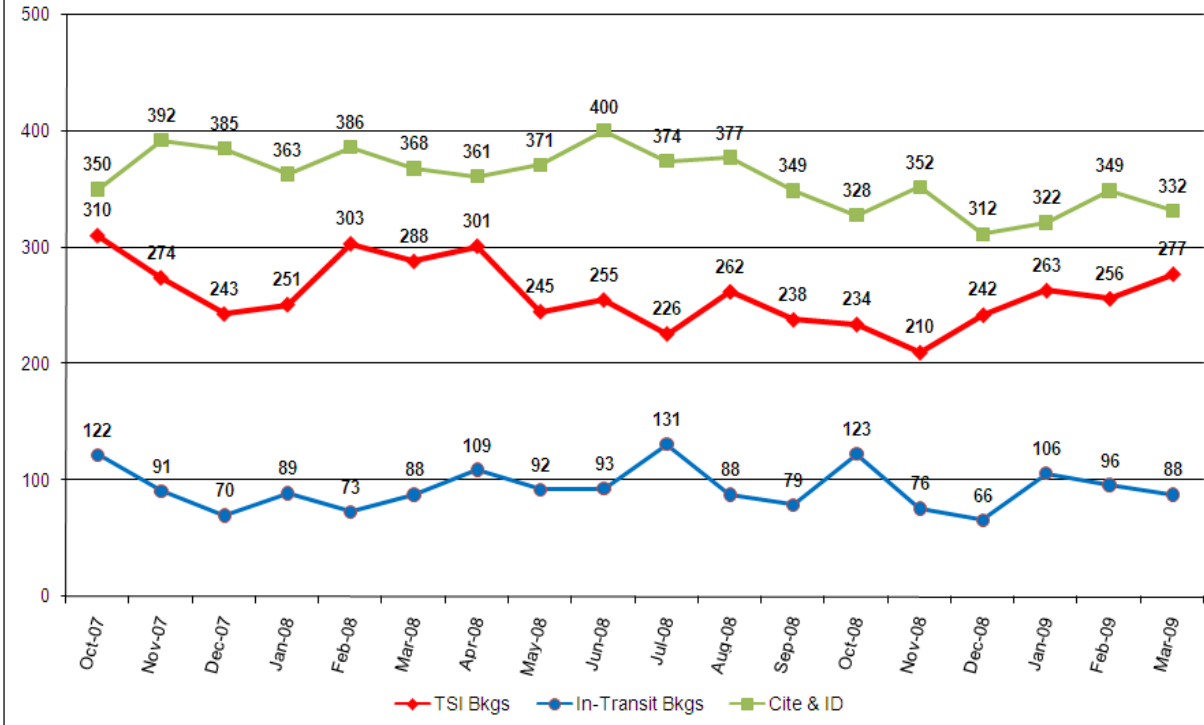
Average length of stay (ALS) for March stood at just under 17 ½ days, very similar to February. Average daily population (ADP) dipped to 1274 inmates, reflecting both the decrease in budgeted capacity and a small monthly increase in total releases (2375).

There were no emergency population releases (EPRs) in March, and the jail did not go into emergency release status on any day during the month. Only 4 time-served offenders were released between 12 AM and 8 AM during March, the time of day when access to public transportation and social services is most limited.

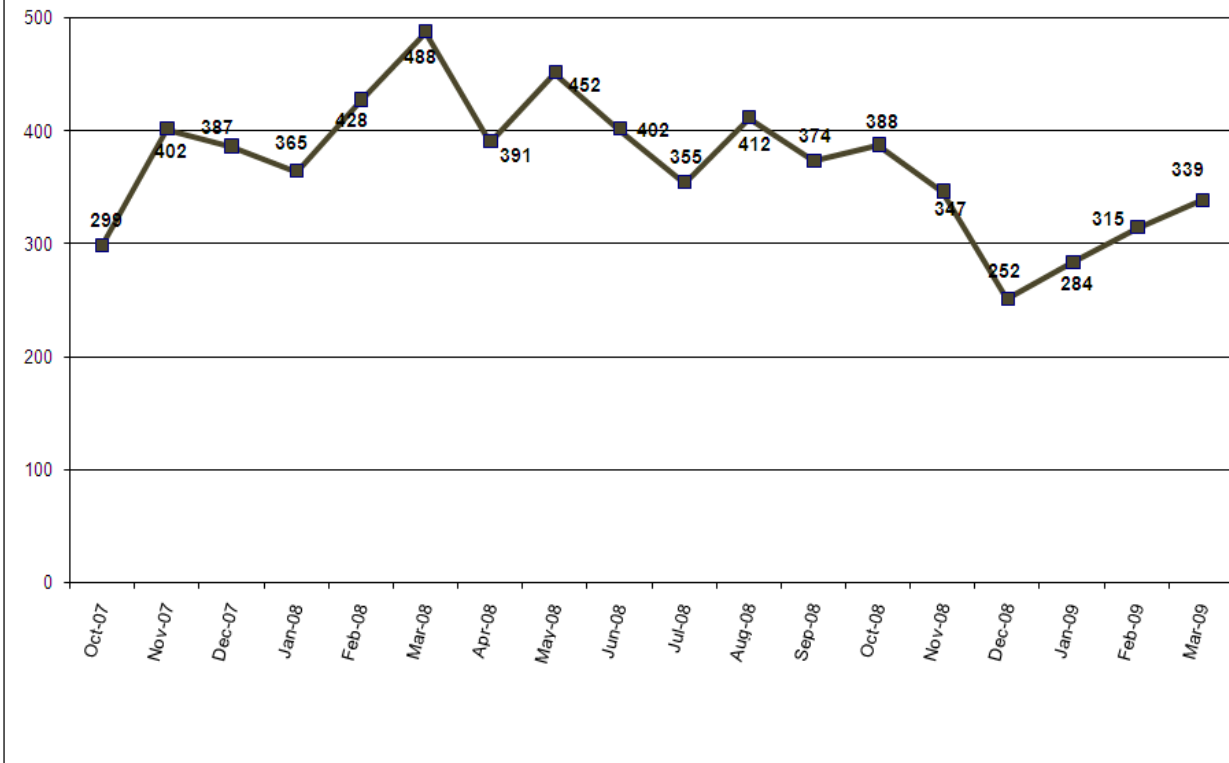
The April 1<sup>st</sup> count of inmates jailed on holds, pre-trial and post-trial all declined somewhat compared to March 1<sup>st</sup>. Inmates jailed pre-trial more than 150 days declined sharply from 91 on March 1<sup>st</sup> to just 72 and April 1<sup>st</sup>, the lowest number observed in the past 18 months. Inmates jailed pre-trial on murder charges numbered only 44 April 1<sup>st</sup>, also the lowest number in the past 18 months.



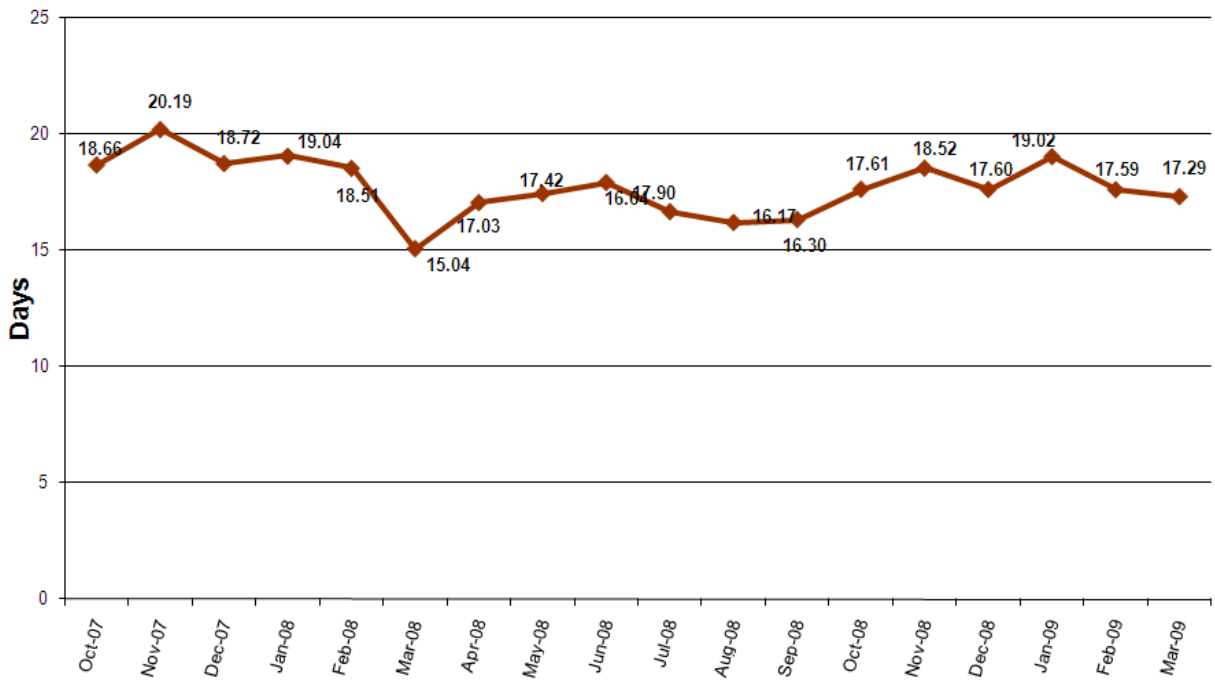
### Non-Standard Bookings



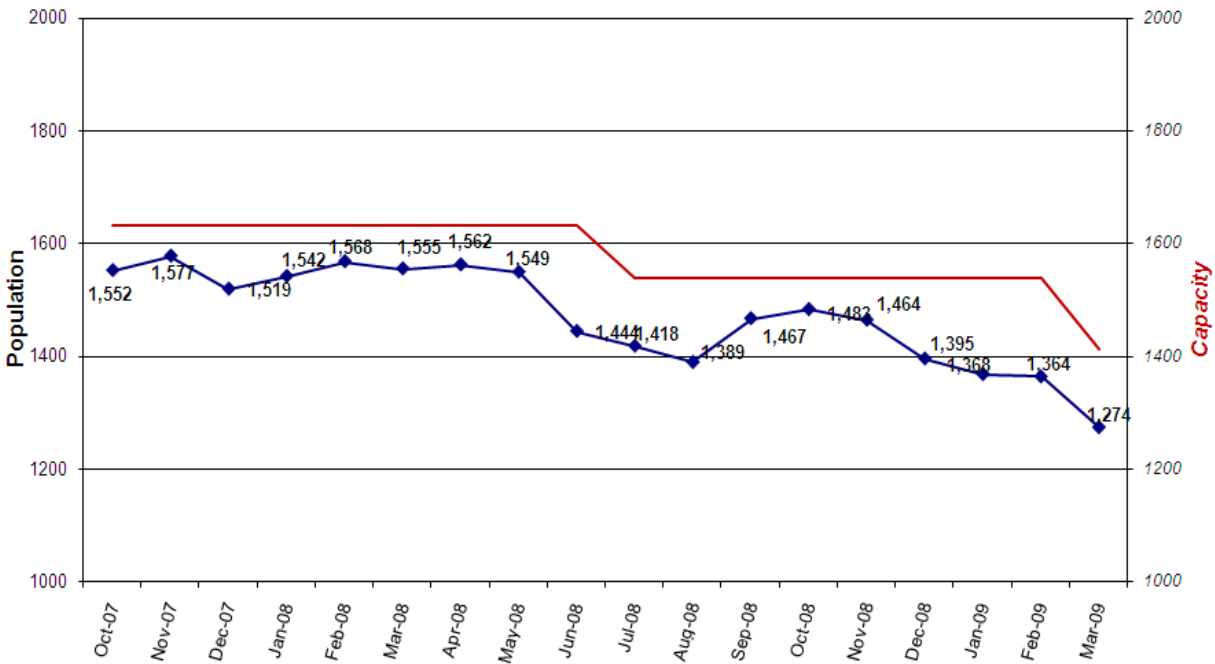
### Portland 57 Project Bookings (subset of standard bookings)

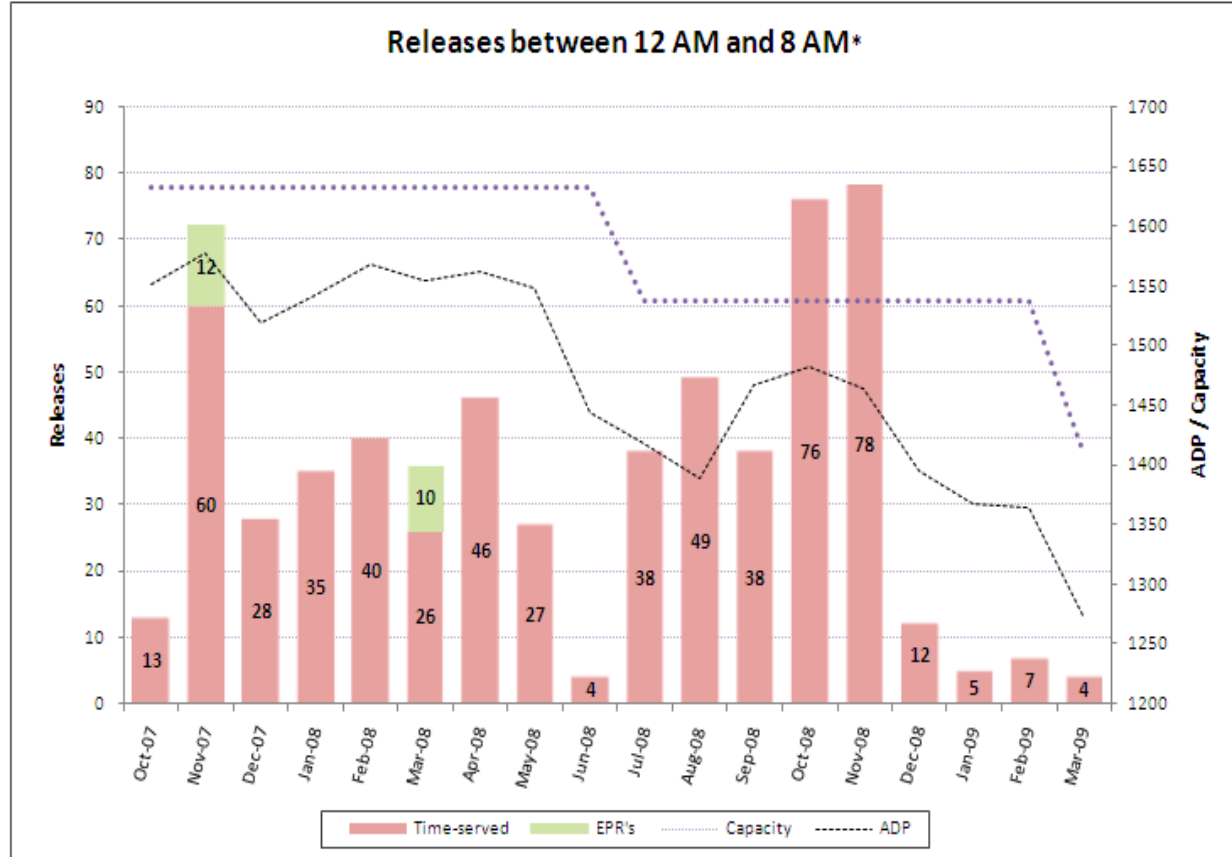
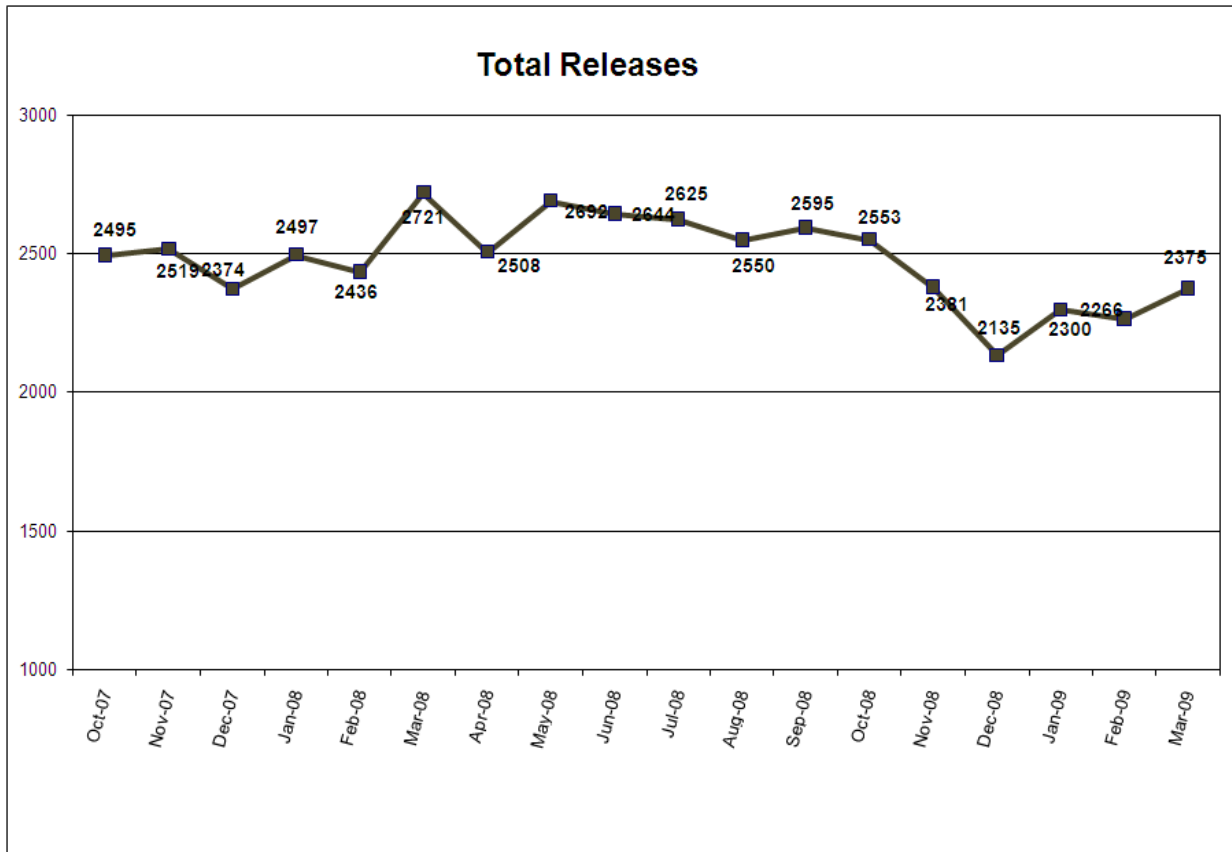


### Average Length of Stay (in days)



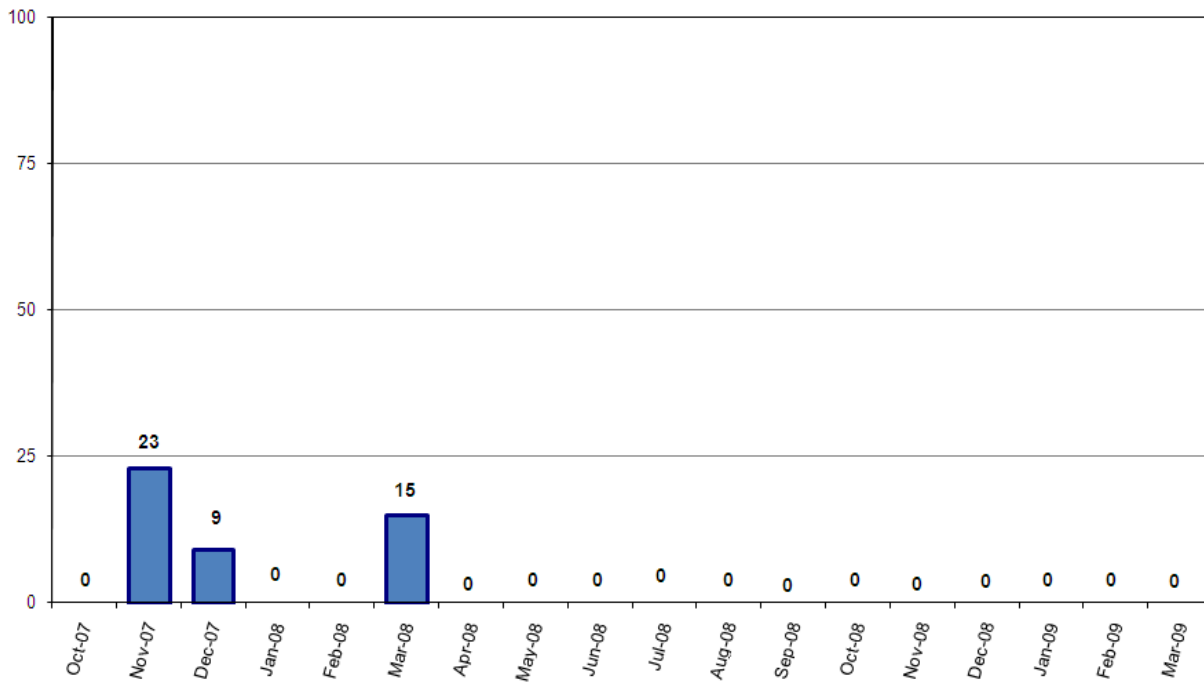
### Average Daily Population



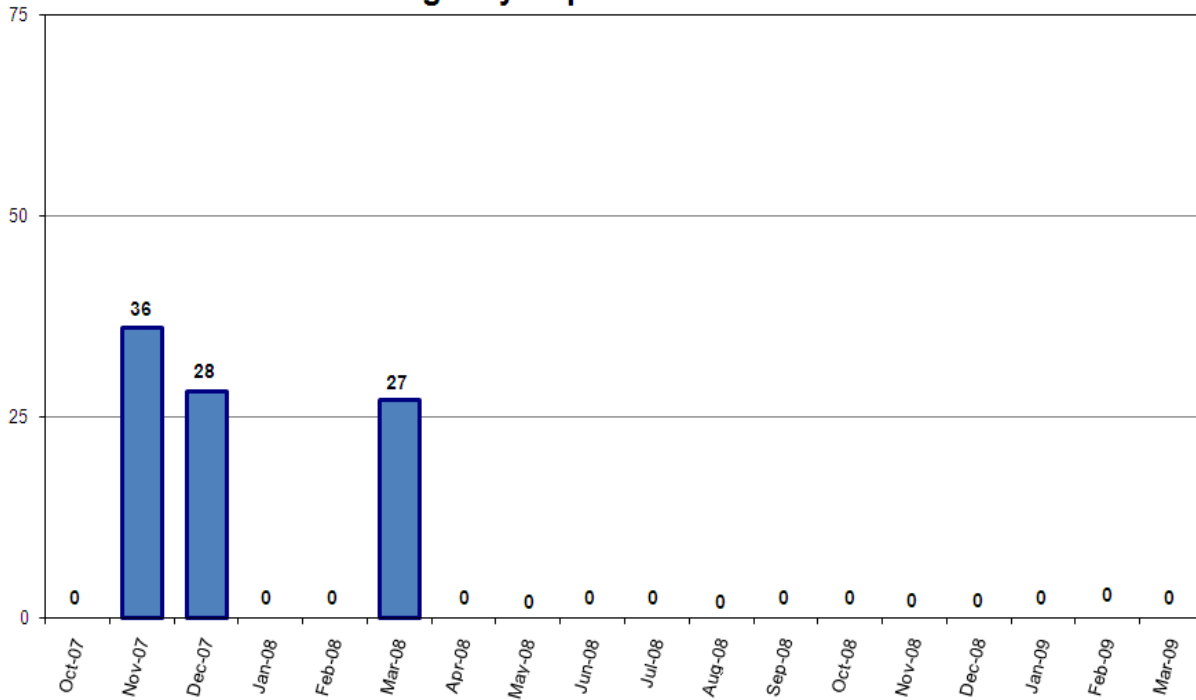


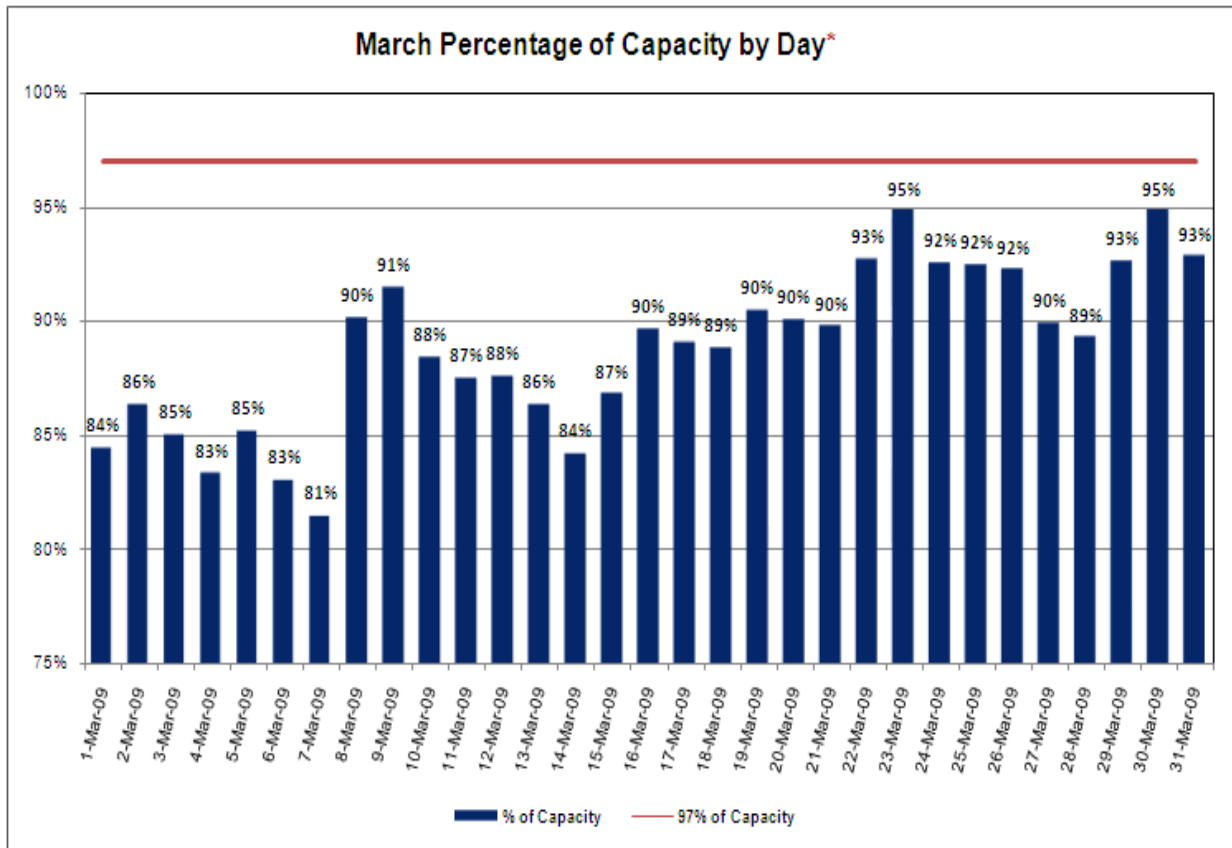
\*Court-ordered and recognition releases not included.

### Emergency Population Releases by Month

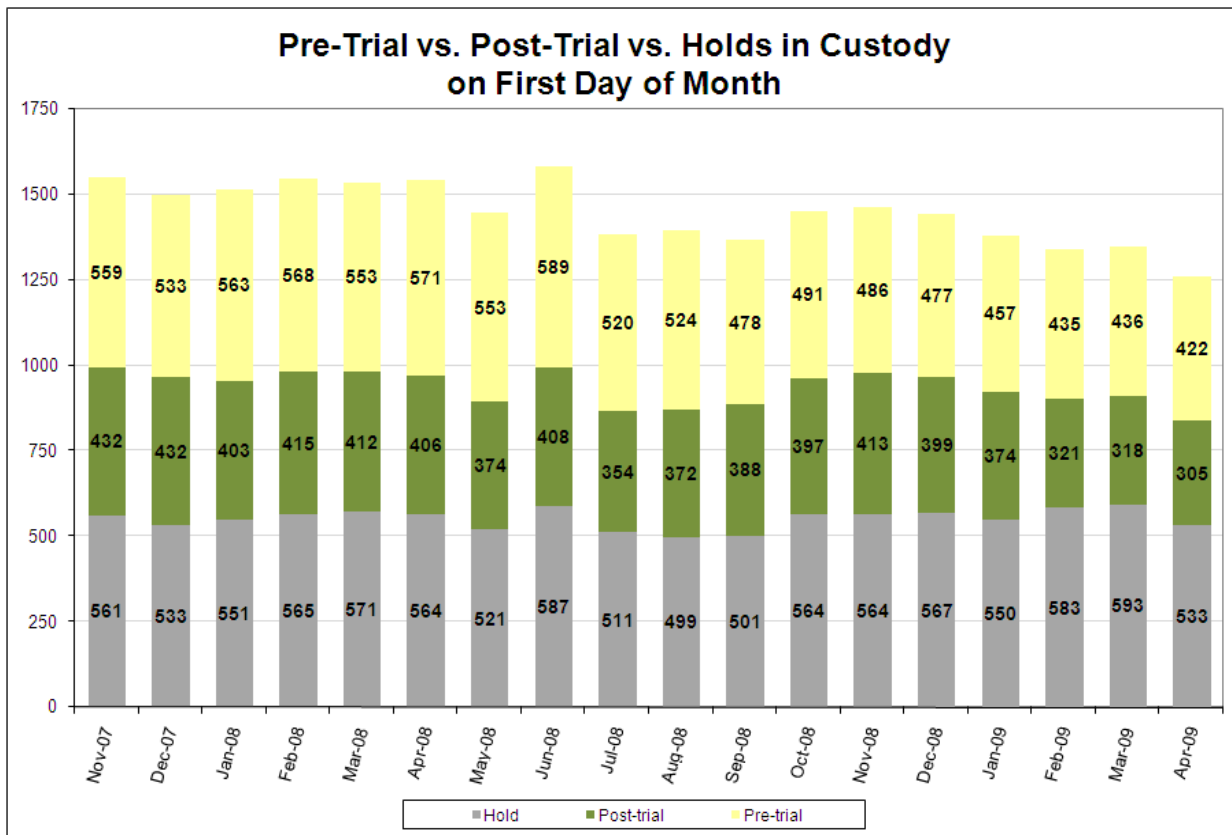


### Monthly Average Score of Emergency Population Releases

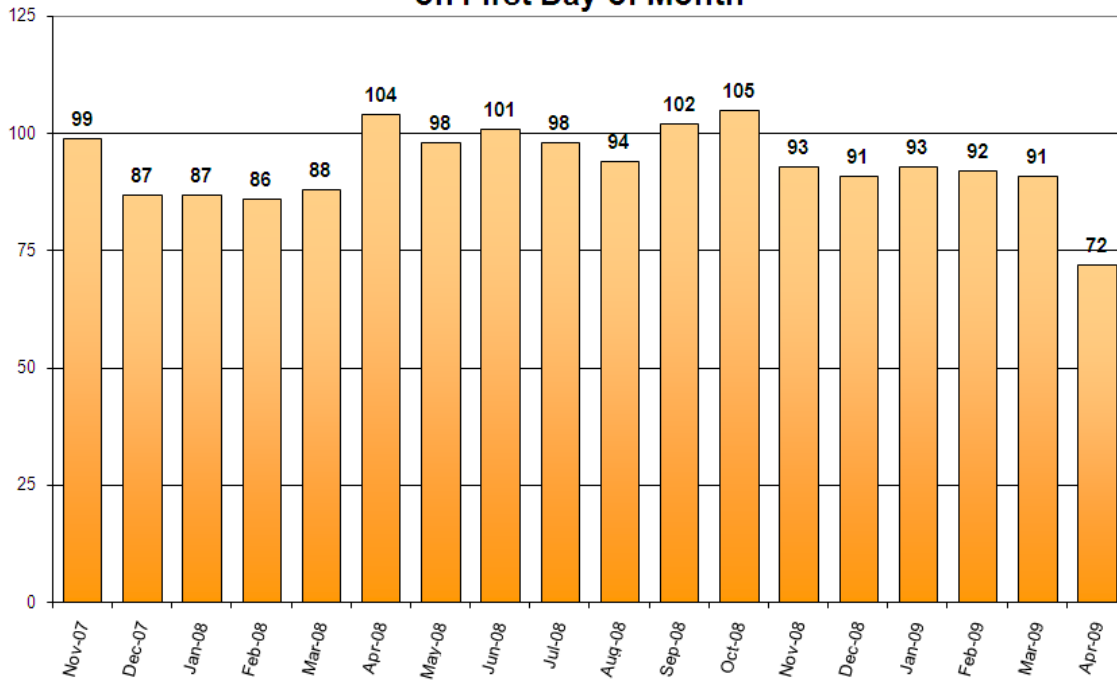




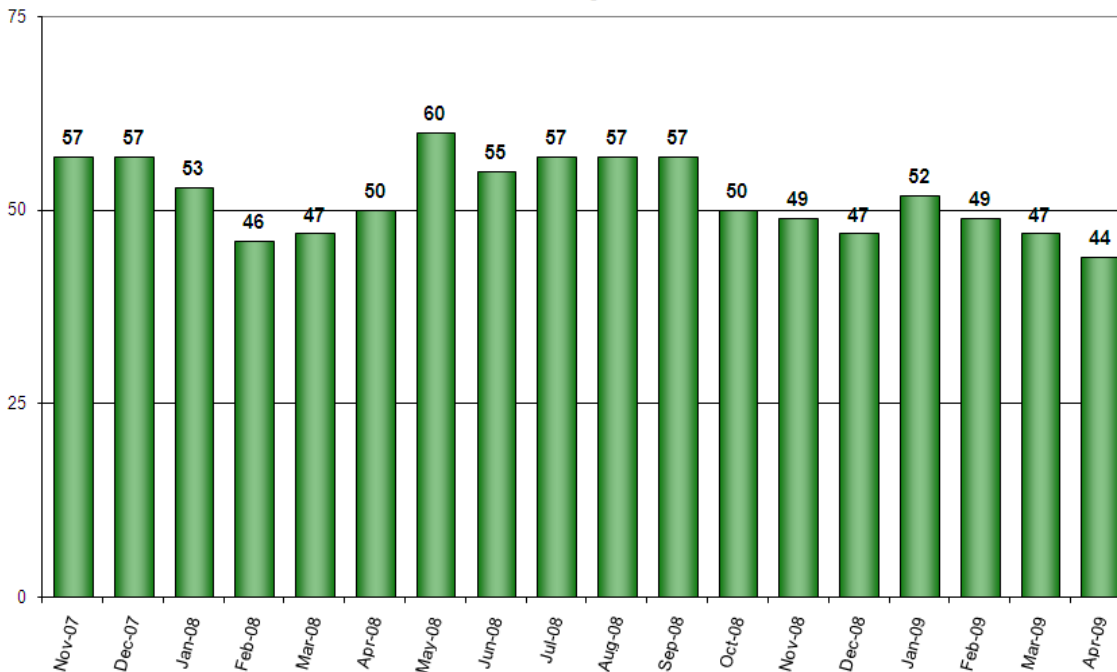
\*Red bars indicate days on which EPRs occurred, if any. Note that EPRs do not always or only occur when capacity exceeds the 97% threshold. Efforts are made to balance the population to the demands of the classification system for specific types of jail beds and balance the space needs for male or female inmates. Additionally, jail capacity varies throughout the day, with these capacity calculations based on 10PM population counts. Total inmate capacity was reduced from 1539 to 1413 on March 8.



**Count of Persons Held Pre-trial more than 150 Days on First Day of Month**



**Count of Persons Held Pre-trial on Murder Related Charges on First Day of Month**



### Count of Pre-trial persons with Murder Related Charges by Length of Stay on First Day of Month

