

Multnomah County Sheriff's Office

**Monthly Jail Statistics Report
June 2009**

JULY 22, 2009



**Bob Skipper
SHERIFF**

**503 988-4300 PHONE
503 988-4500 TTY**

www.mcso.us/public/

501 SE HAWTHORNE BLVD., Suite 350 • Portland, OR 97214

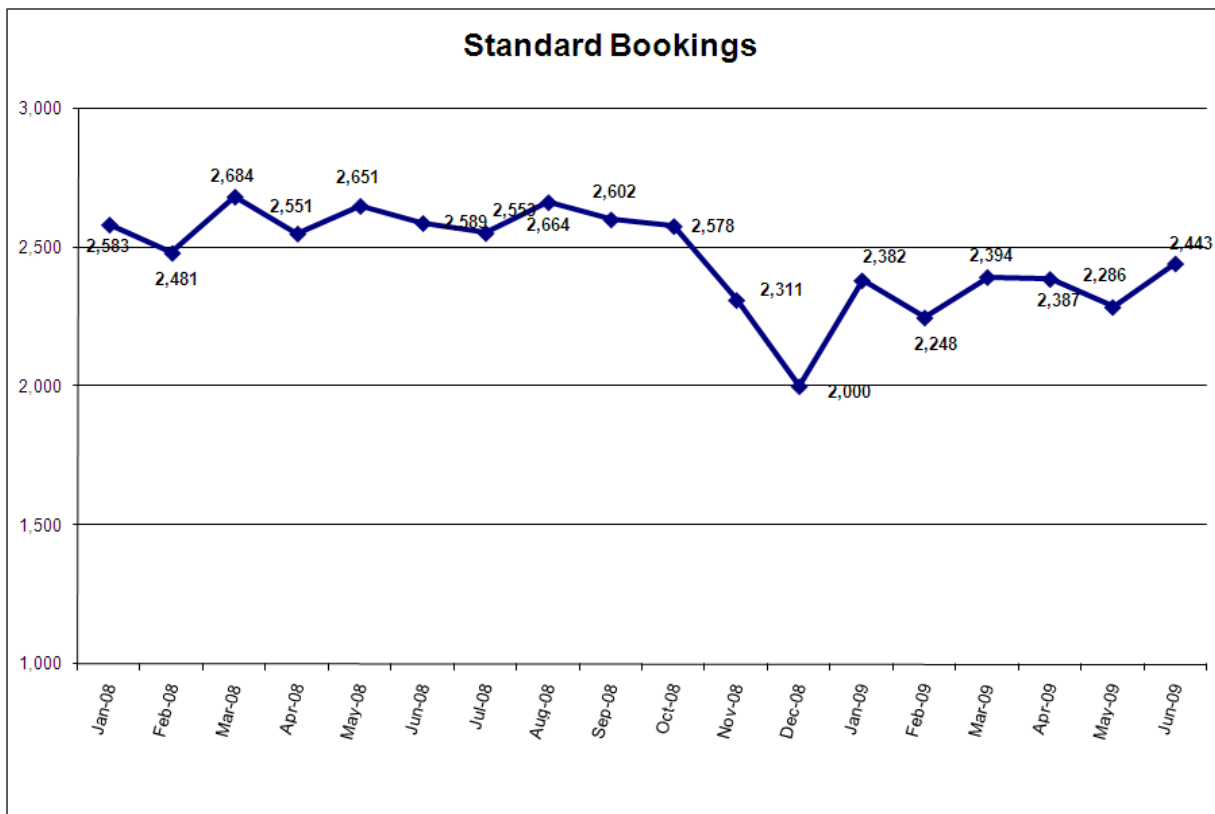
Multnomah County Monthly Jail Statistics June 2009

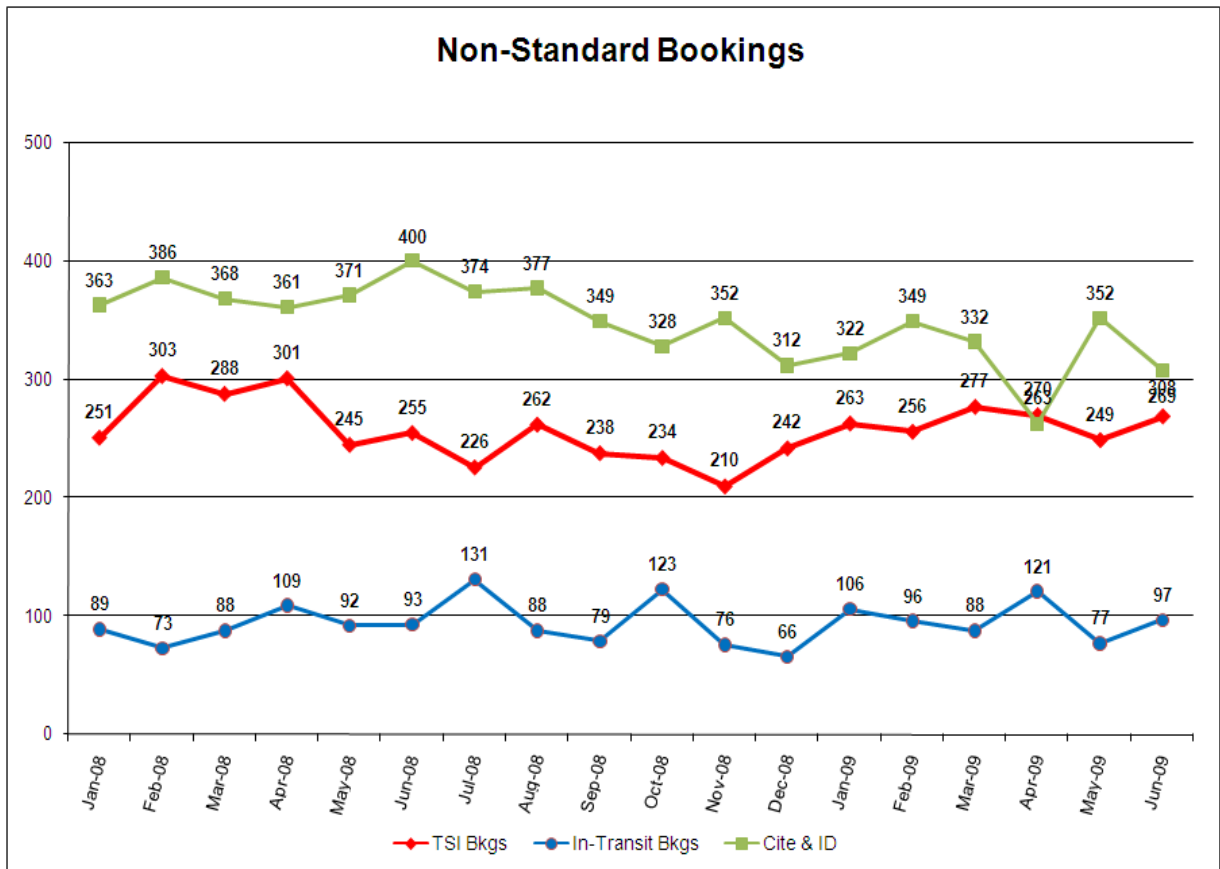
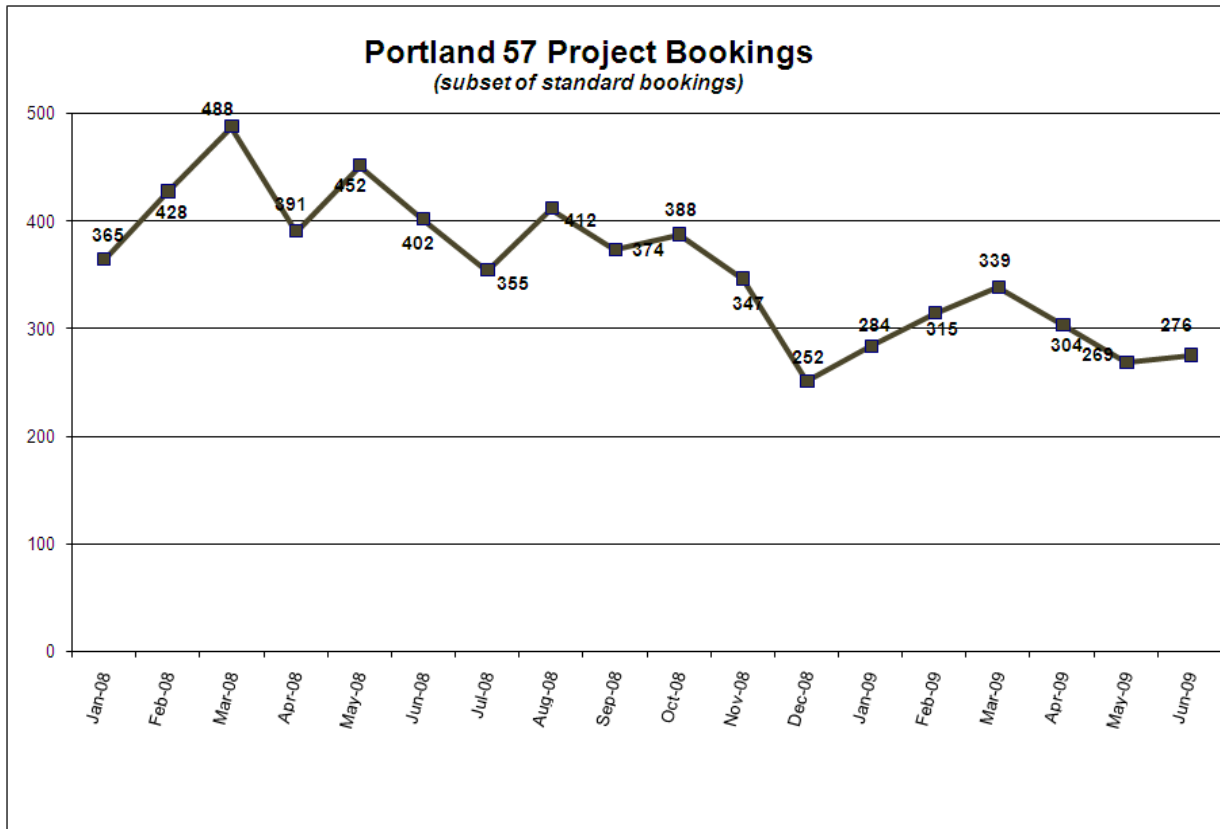
Standard bookings totaled 2443 in June, over 150 more than in May. Project 57 bookings stood almost unchanged in June at 276, while Cite & ID bookings dropped to just over 300. Turn-self-in (TSI) bookings and in-transit booking showed slight increases during the month (totaling 269 and 97, respectively). The daily count of exclusive USM inmates ranged from 162 to 196 in June.

Average length of stay (ALS) increased to 15.6 days from May to June, but remains lower than the average lengths of stay observed in the earlier months of 2009 when ALS hovered around 17 days. Average daily population (ADP) rose slightly in June to 1331 inmates.

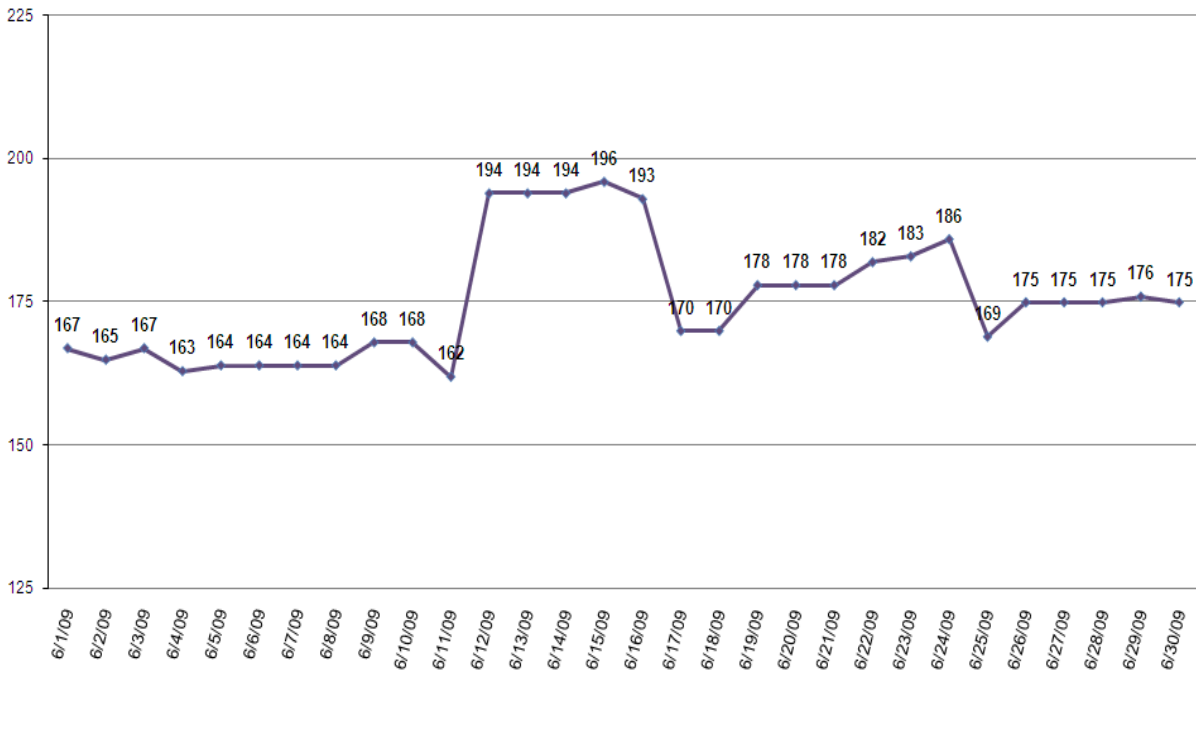
Total releases numbered 2470 in June, over 200 more than in June. Recognizance releases increased sharply again in June to 627, and in proportion to capacity, recognizance releases increased 3 percentage points over May to 44.4%, the highest level observed in the past 18 months of tracking. A total of 30 inmates were force released (also known as emergency population release) during two events (EPRs) in mid June. The last forced releases occurred in March 2008 when 15 inmates were released. Eighty-six (86) time-served offenders were released between 12 AM and 8 AM in June, as were 26 of the 30 pre-trial inmates who were force released.

From June 1st to July 1st, the number of inmates jailed pre-trial, post-trial, and on holds all increased slightly, though the number of post-trial inmates (298) remains quite low compared to most of the previous 18 months. Inmates jailed pre-trial more than 150 days dropped to just 67 on July 1st, the lowest number in 18 months. The number of inmates jailed pre-trial on murder charges remained unchanged from June 1st to July 1st at 52.

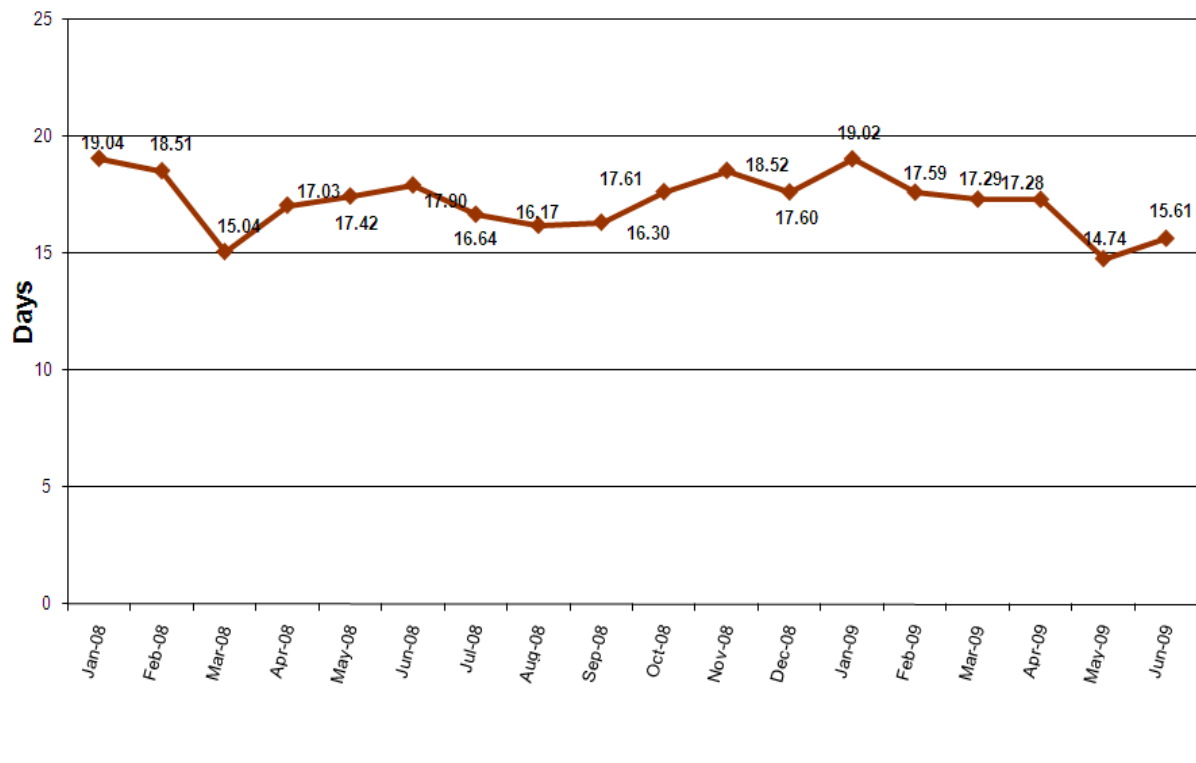


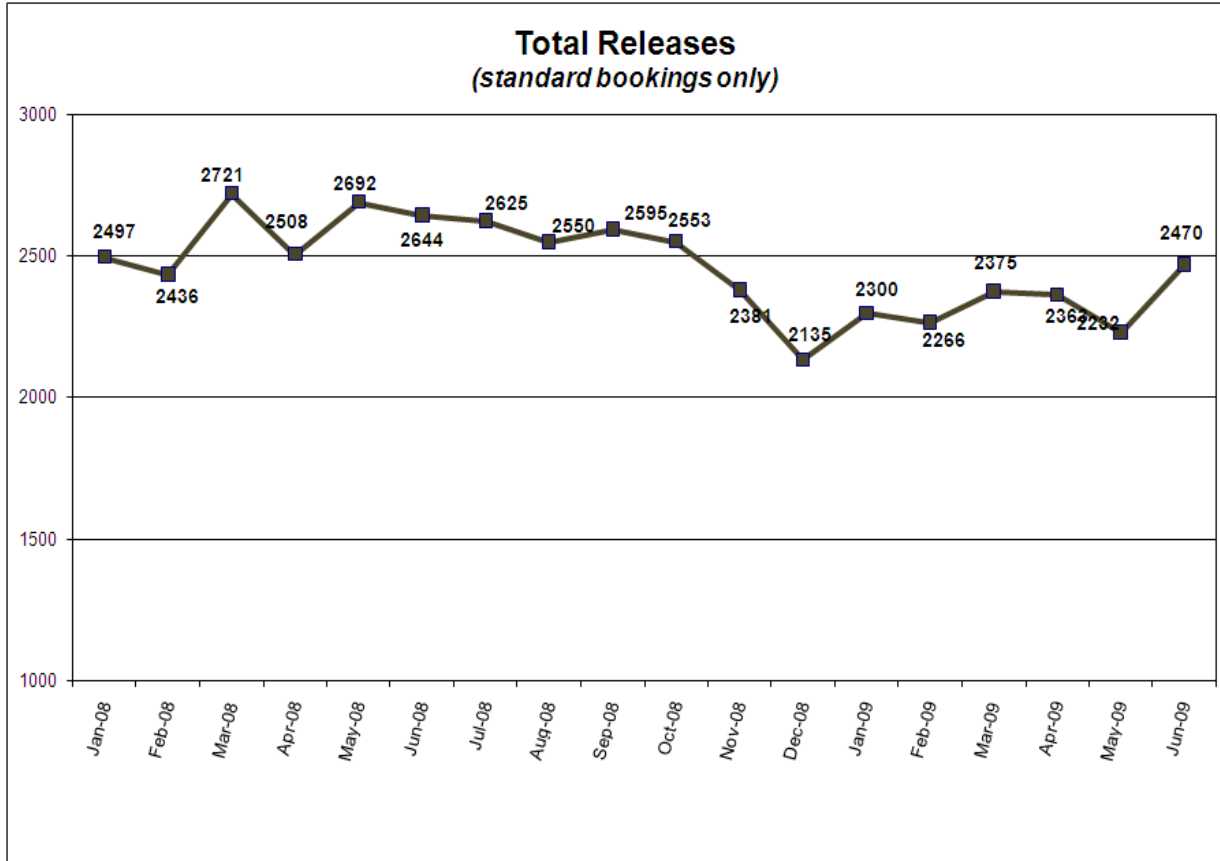
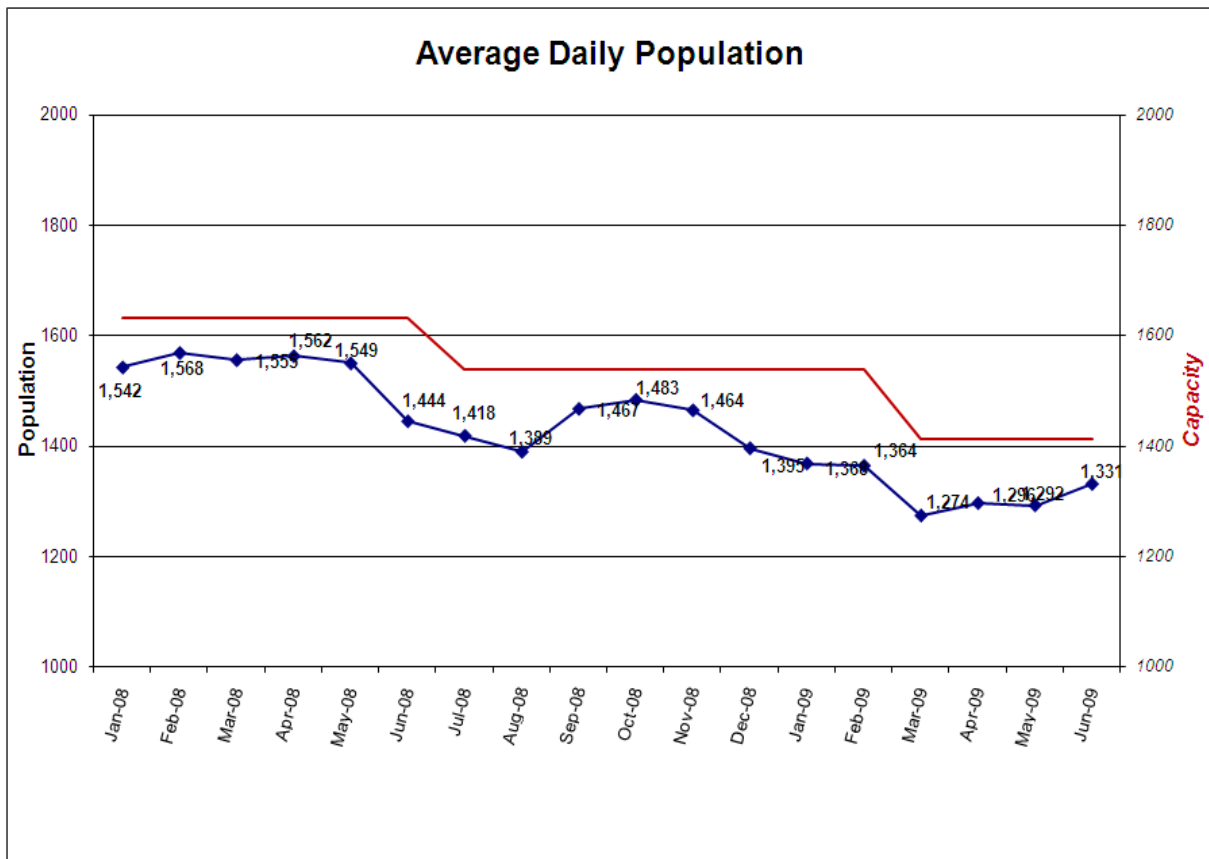


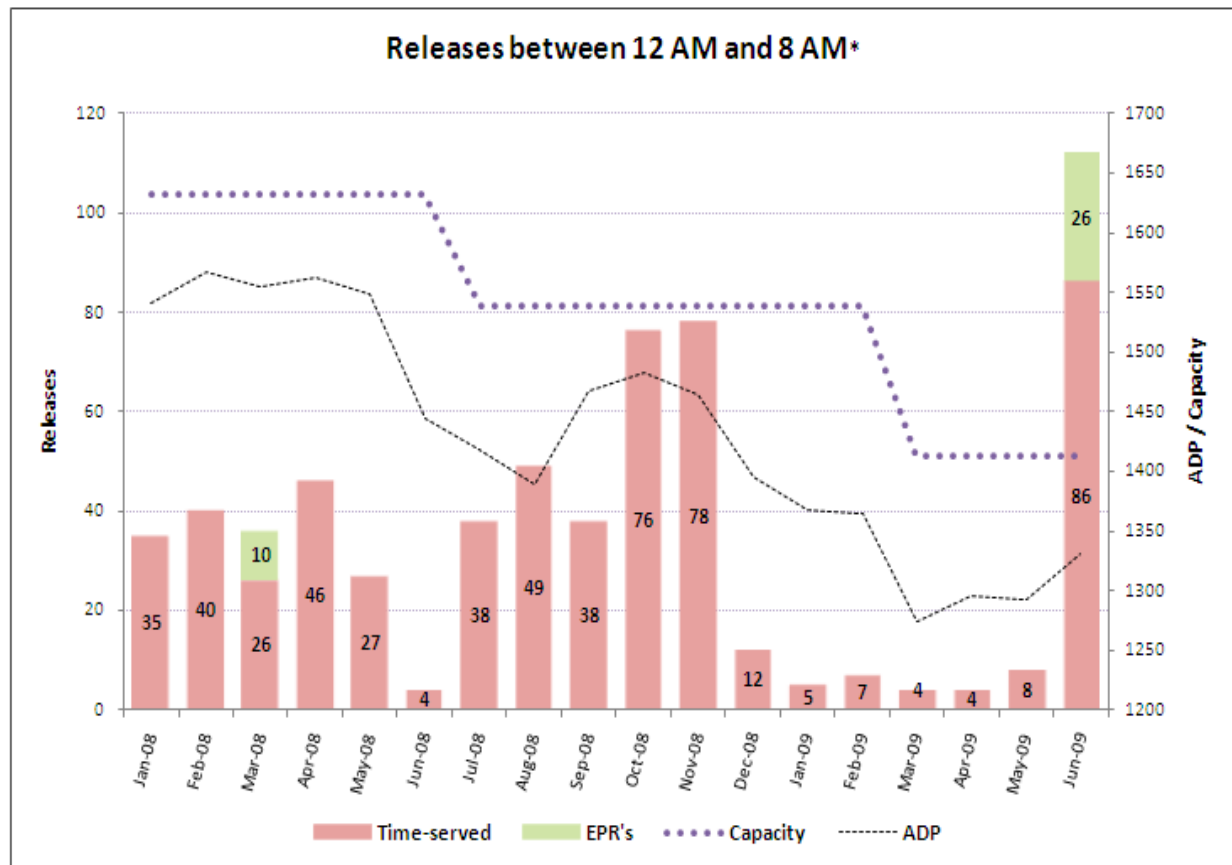
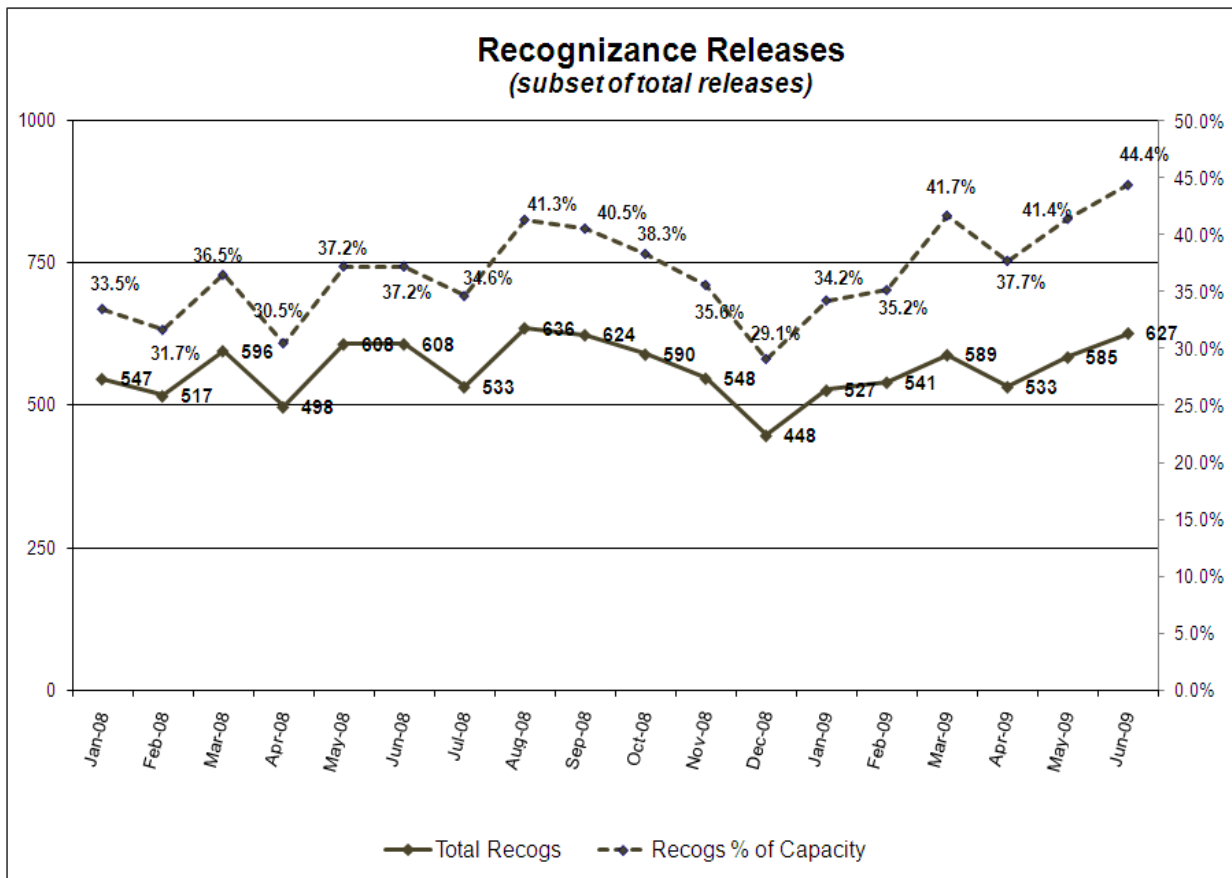
Daily Count of Exclusive U.S. Marshal Inmates



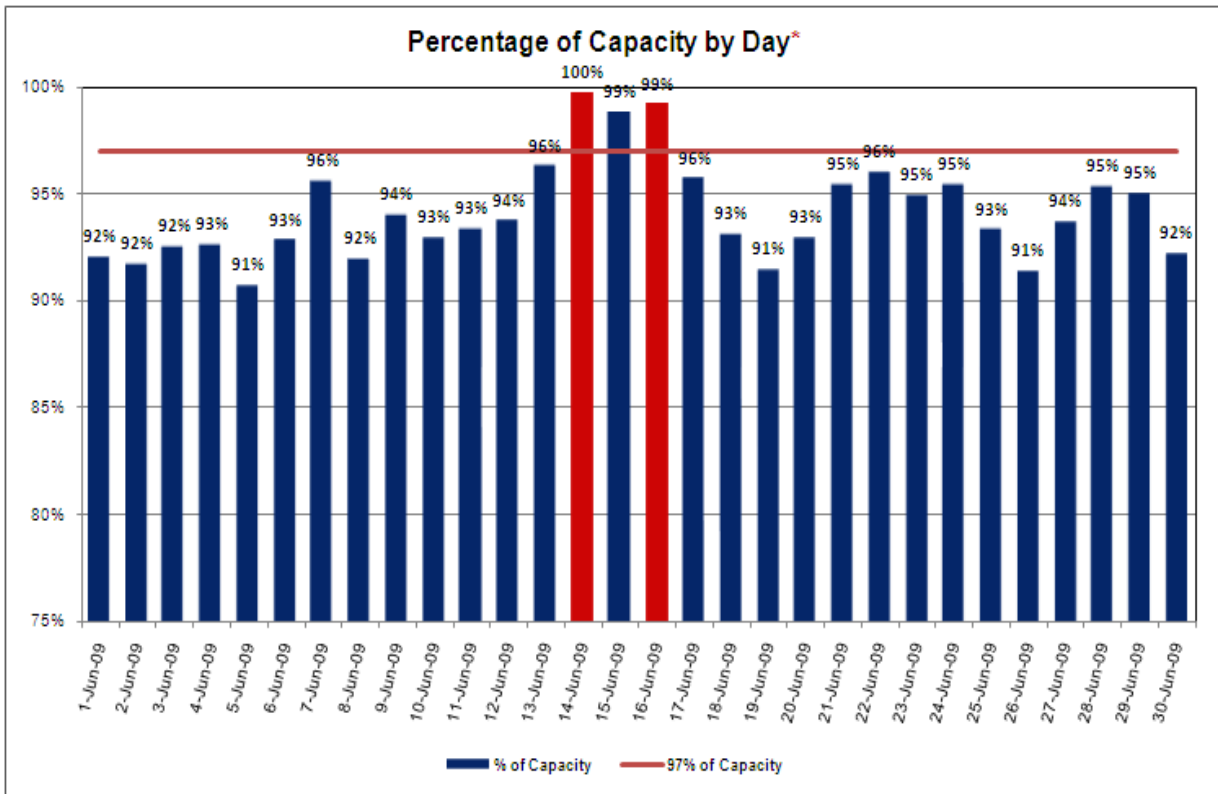
Average Length of Stay (in days)



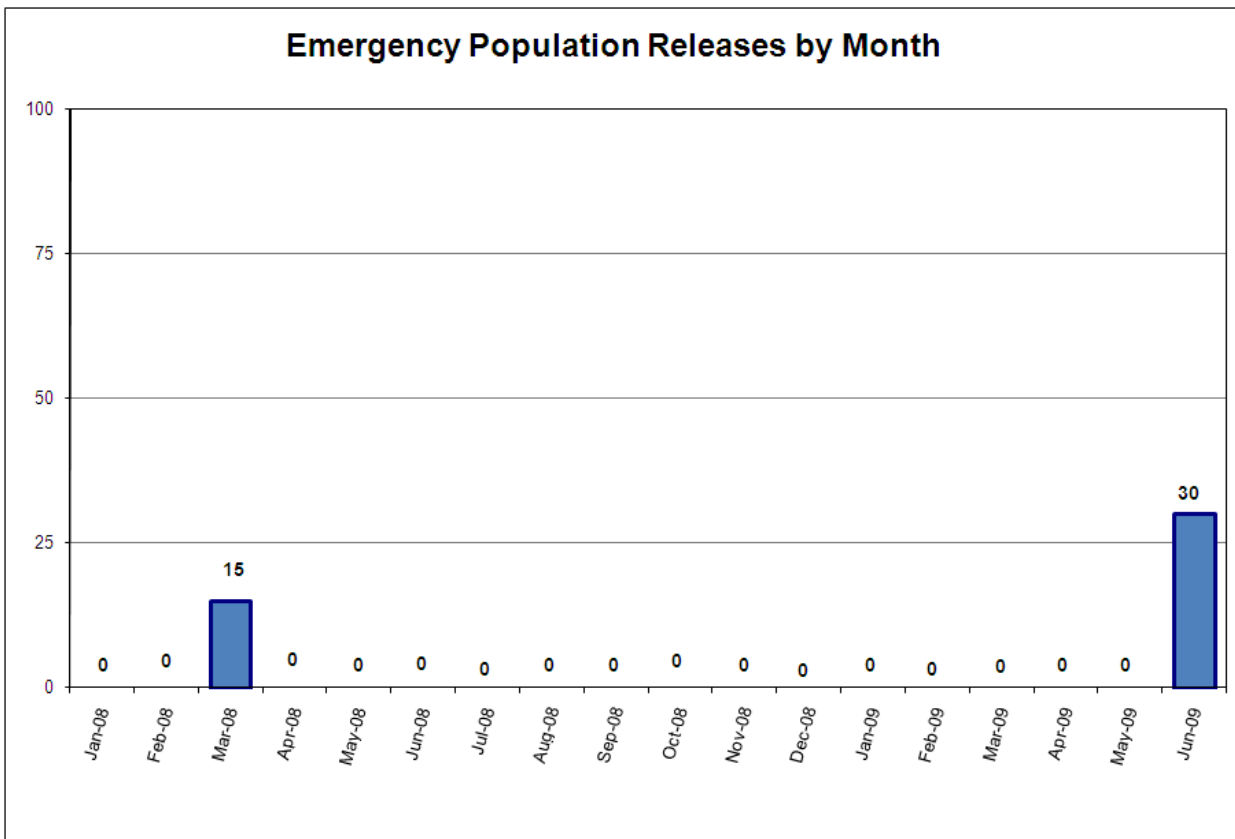




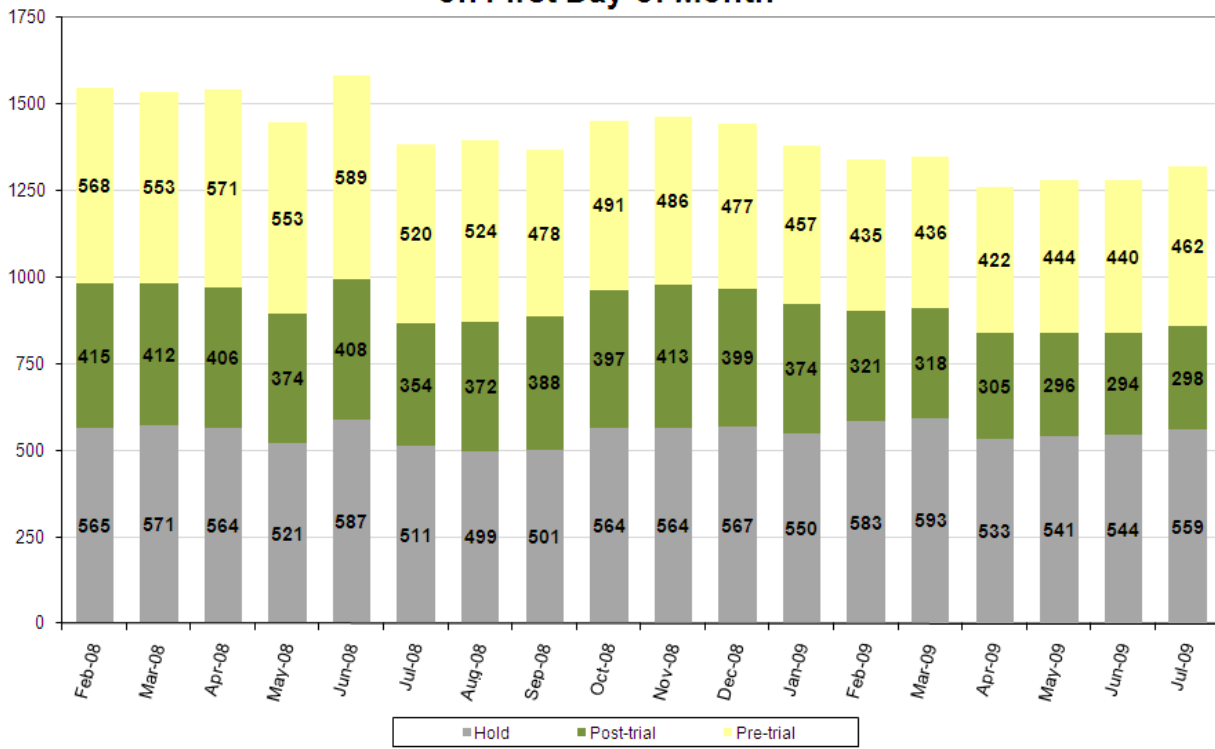
*Court-ordered and recognizance releases not included.



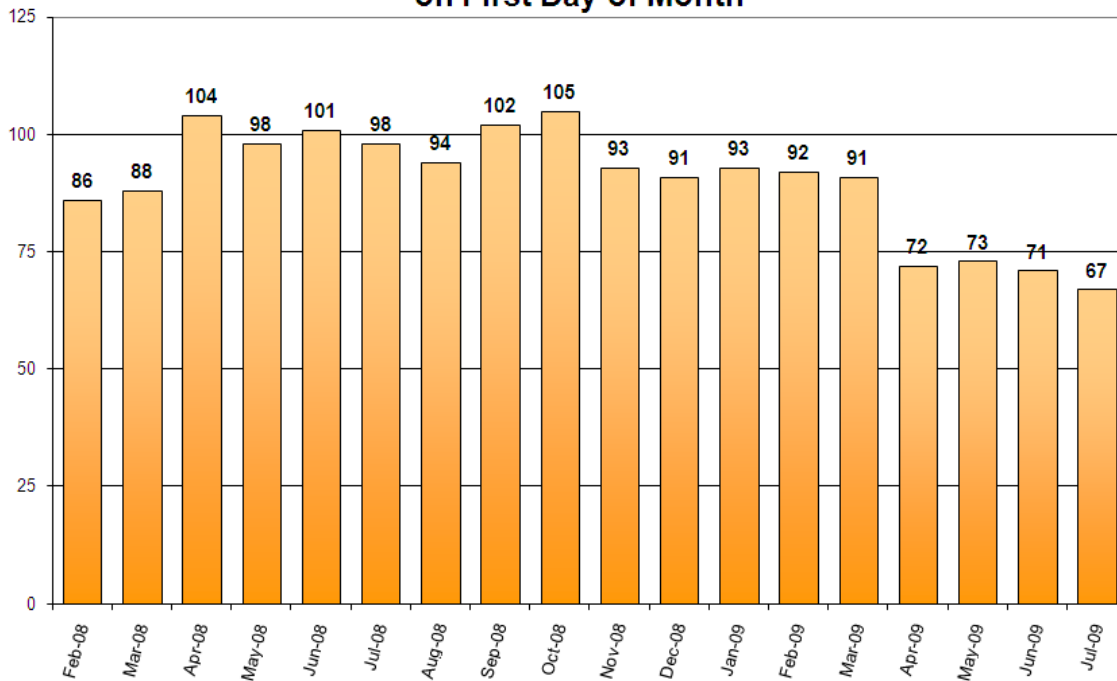
*Red bars indicate days on which EPRs occurred, if any. Note that EPRs do not always or only occur when capacity exceeds the 97% threshold. Efforts are made to balance the population to the demands of the classification system for specific types of jail beds and balance the space needs for male or female inmates. Additionally, jail capacity varies throughout the day, with these capacity calculations based on 10PM population counts.



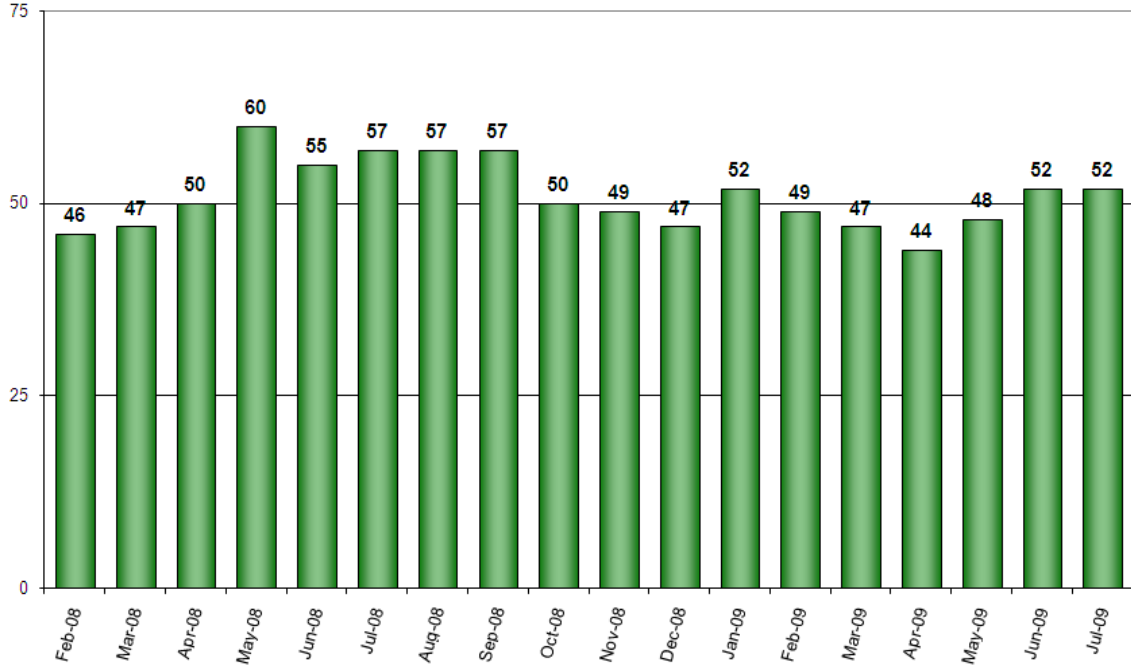
Pre-Trial vs. Post-Trial vs. Holds in Custody on First Day of Month



Count of Persons Held Pre-trial more than 150 Days on First Day of Month



Count of Persons Held Pre-trial on Murder Related Charges on First Day of Month



Count of Pre-trial persons with Murder Related Charges by Length of Stay on First Day of Month

