

*Multnomah County Sheriff's Office*

**Monthly Jail Statistics Report  
January 2009**

**FEBRUARY 10, 2009**



**Bob Skipper  
SHERIFF**

**503 988-4300 PHONE  
503 988-4500 TTY**

[www.mcso.us/public/](http://www.mcso.us/public/)

**501 SE HAWTHORNE BLVD., Suite 350 • Portland, OR 97214**

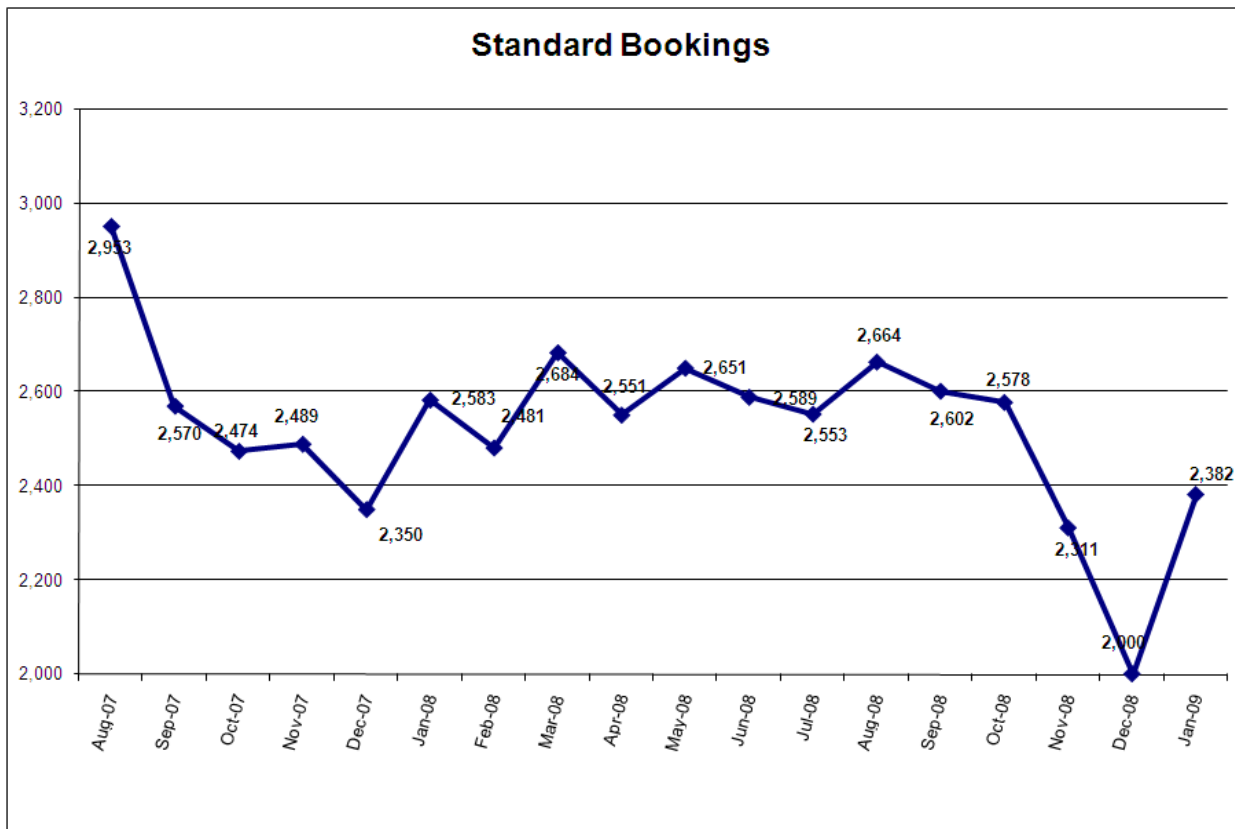
## Multnomah County Monthly Jail Statistics January 2009

Standard bookings rebounded in January to 2382, ending several months of decline. Turn-self-in (TSI), Cite & ID, and Project 57 bookings all increased slightly over December, as well.

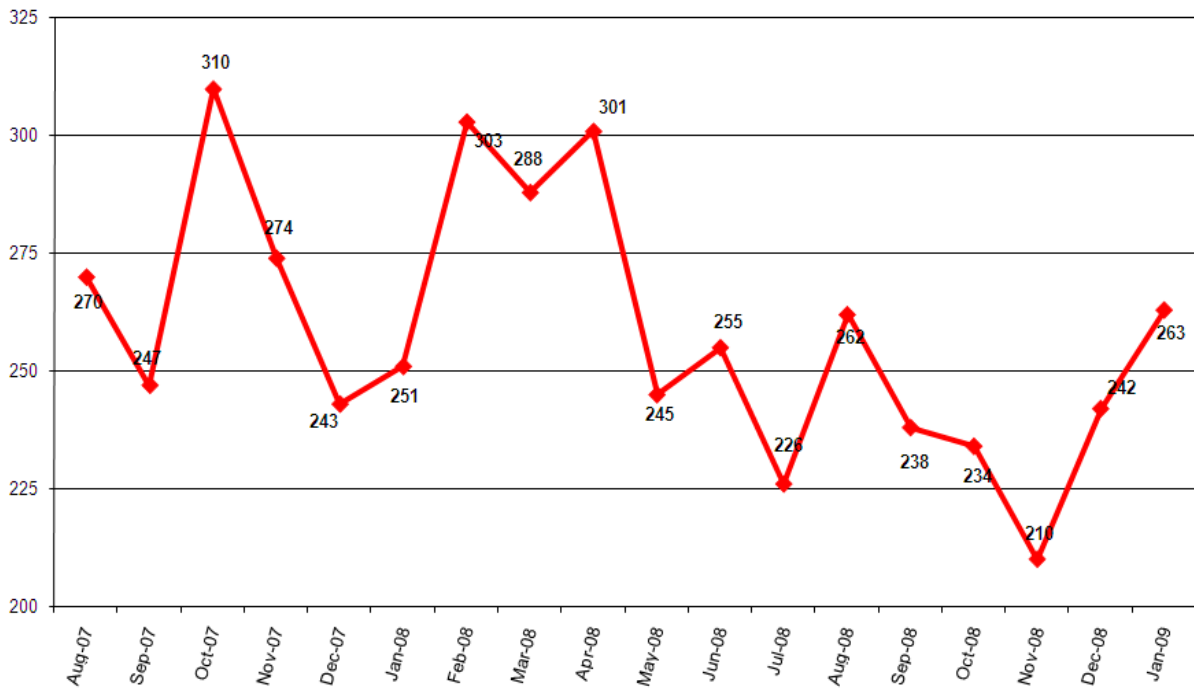
Average length of stay (ALS) for January increased to 19.02 days, the highest level in a year. Despite increases in all types of booking and in ALS, average daily population (ADP) declined to 1368, its lowest level in the past 18 months.

There were no emergency population releases (EPRs) during January, and the jail did not go into emergency release status on any day during the month. Only 5 time-served offenders were released between 12 AM and 8 AM in January, the time of day when access to public transportation and social services is most limited.

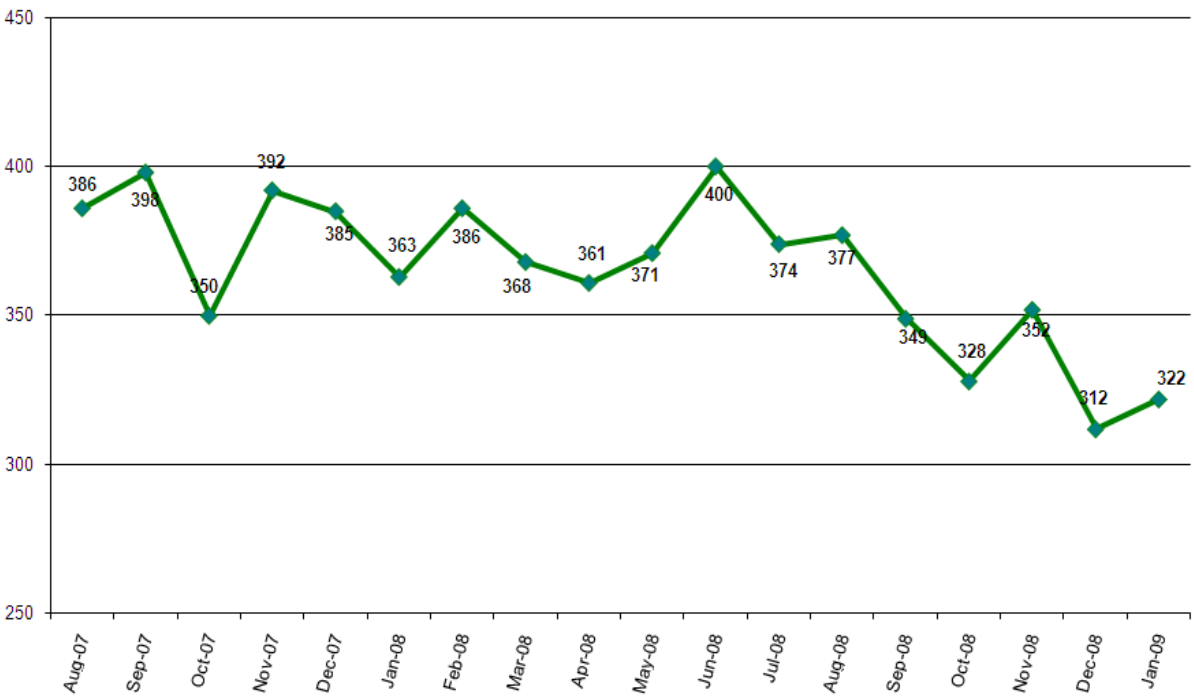
The number of inmates jailed on holds increased from January 1<sup>st</sup> to February 1<sup>st</sup>, while the count of those incarcerated pre-trial and post-trial declined to their lowest levels in the past 18 months (to 435 and 321 inmates, respectively). Inmates jailed pre-trial more than 150 days totaled 92 on the first of February, while those held pre-trial on murder-related charges numbered 49, similar to the previous several months. One (1) inmate jailed on murder charges had reached the five-year mark during the month.



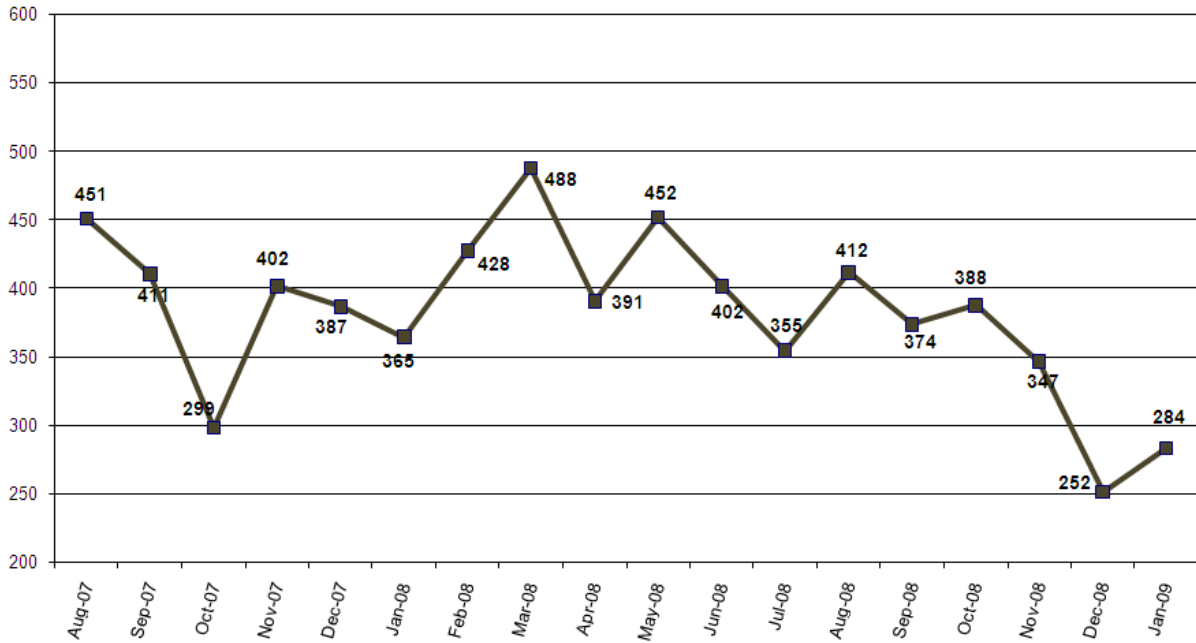
### Turn-Self-In (TSI) Bookings



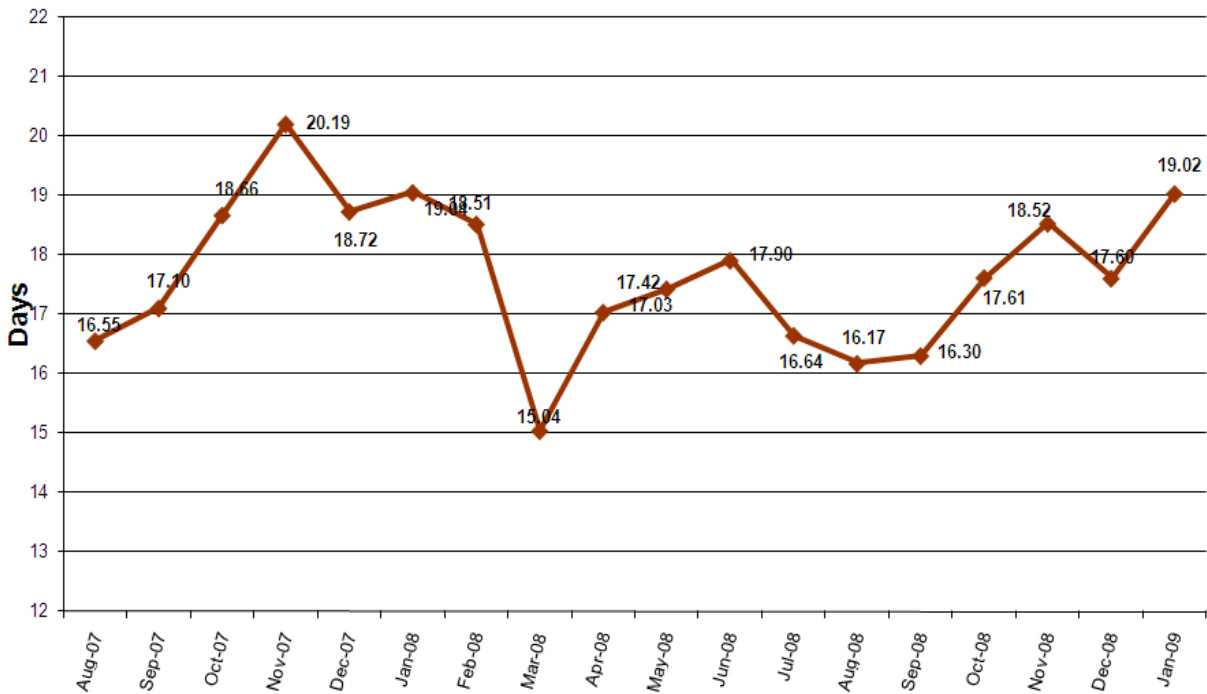
### Cite & ID Bookings

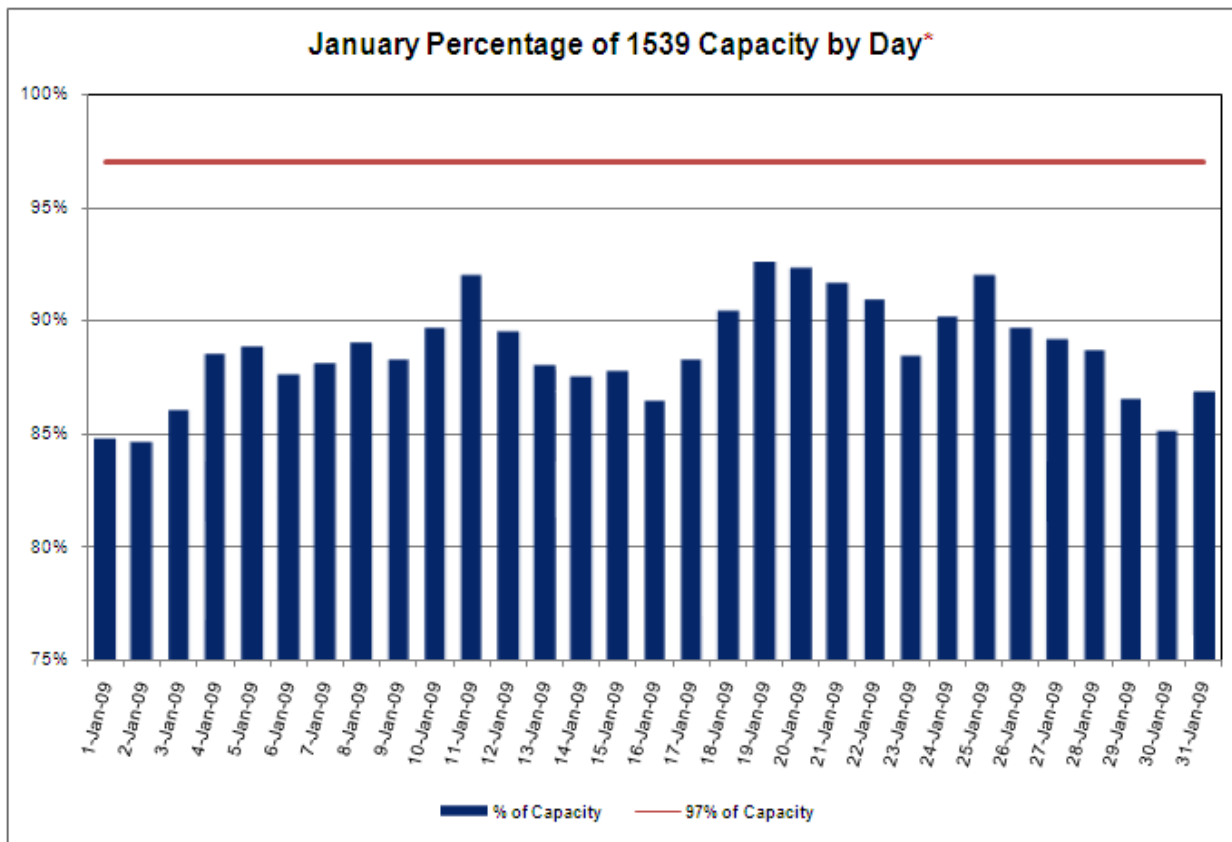
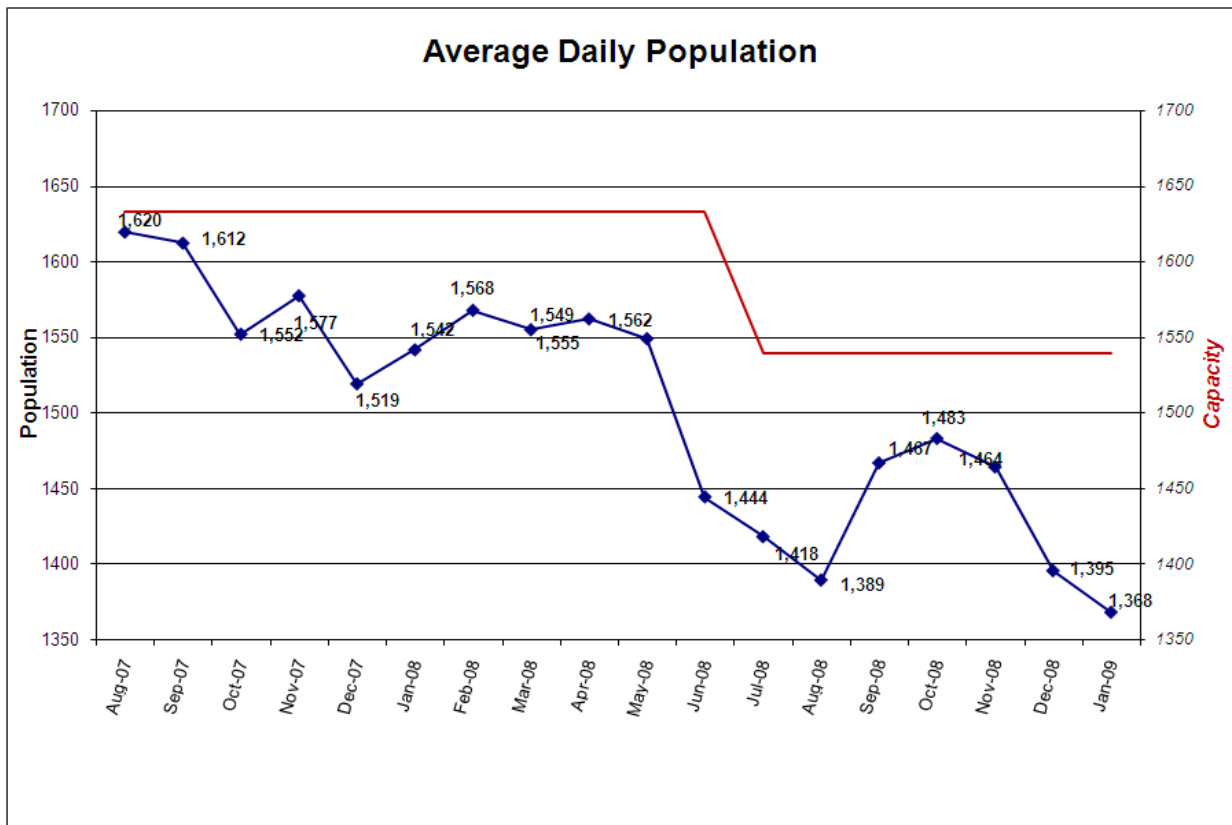


**Portland 57 Project - Total Bookings by Month**



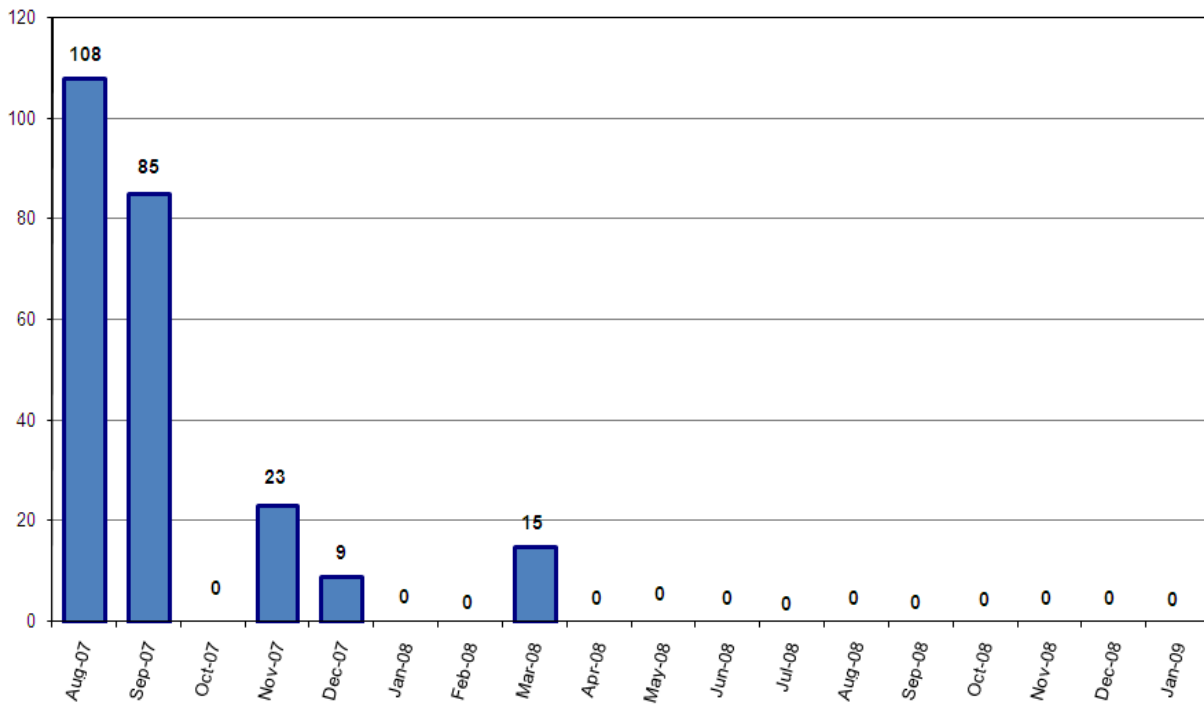
**Average Length of Stay (in days)**



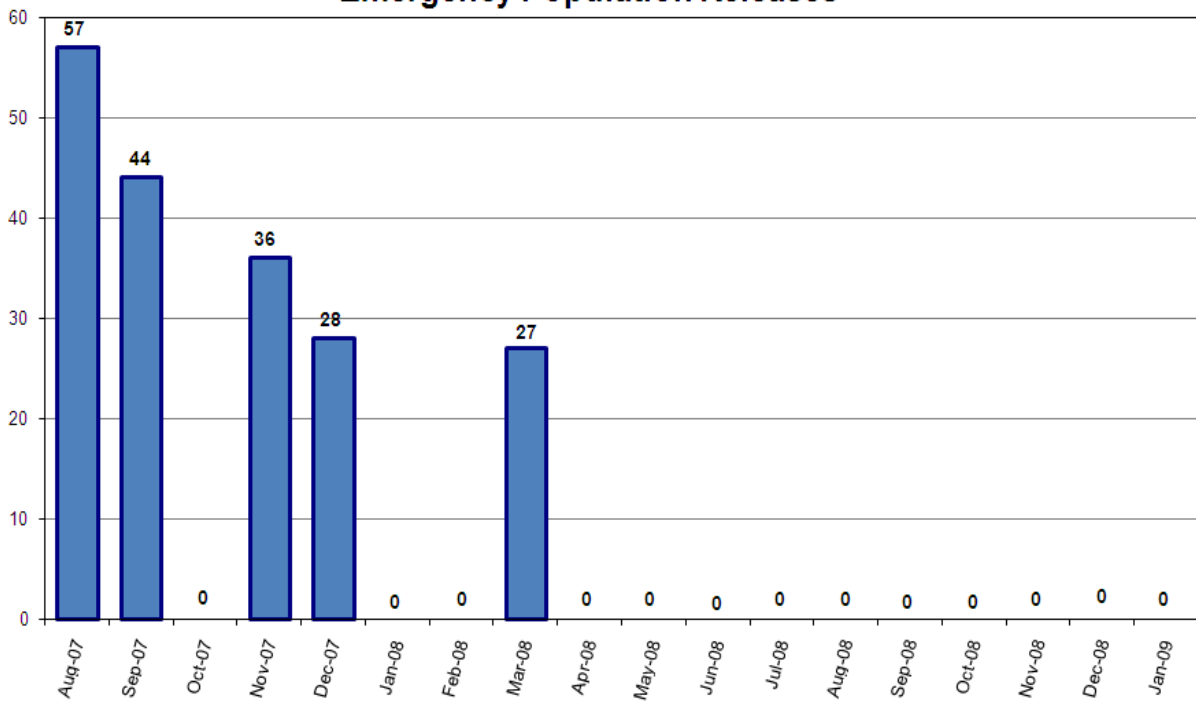


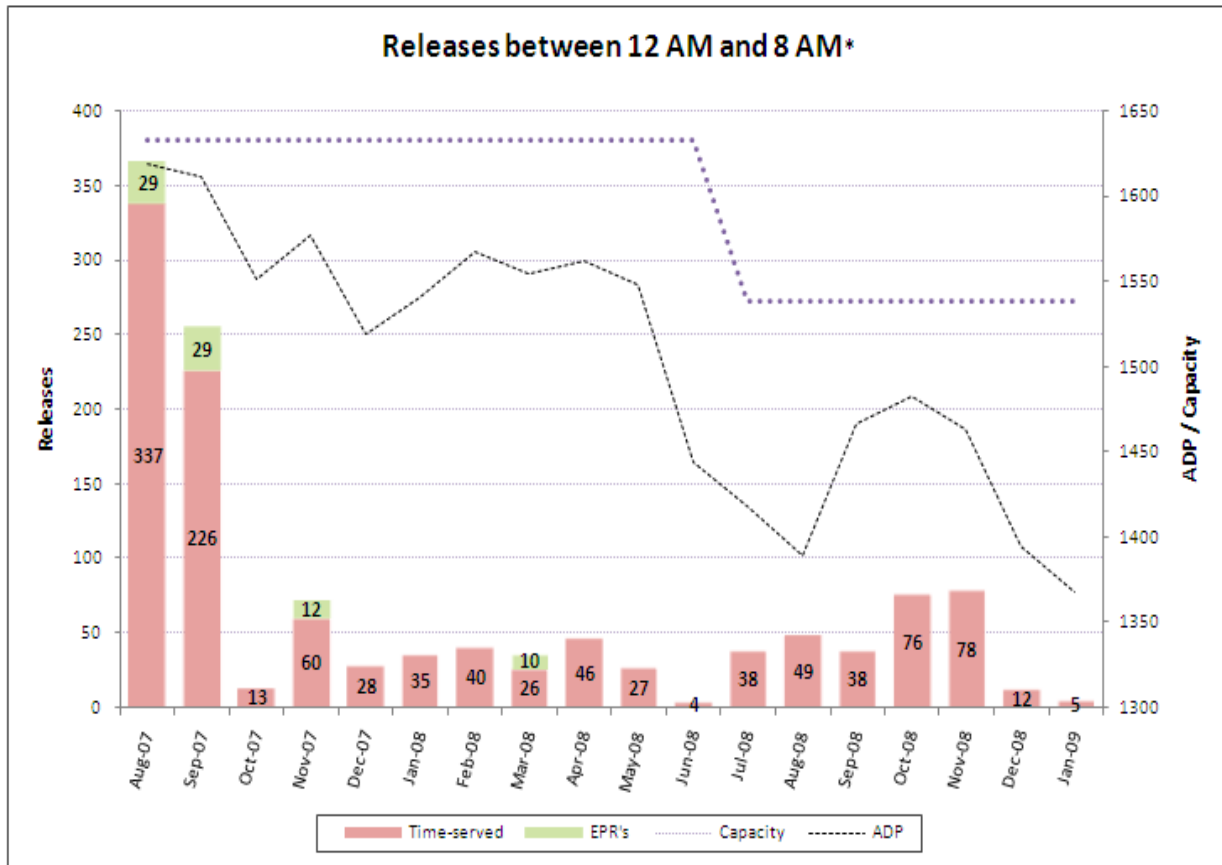
\*Red bars indicate days on which EPRs occurred, if any. Note that EPRs do not always or only occur when capacity exceeds the 97% threshold. Efforts are made to balance the population to the demands of the classification system for specific types of jail beds and balance the space needs for male or female inmates. Additionally, jail capacity varies throughout the day, with these capacity calculations based on 10PM population counts.

### Emergency Population Releases by Month

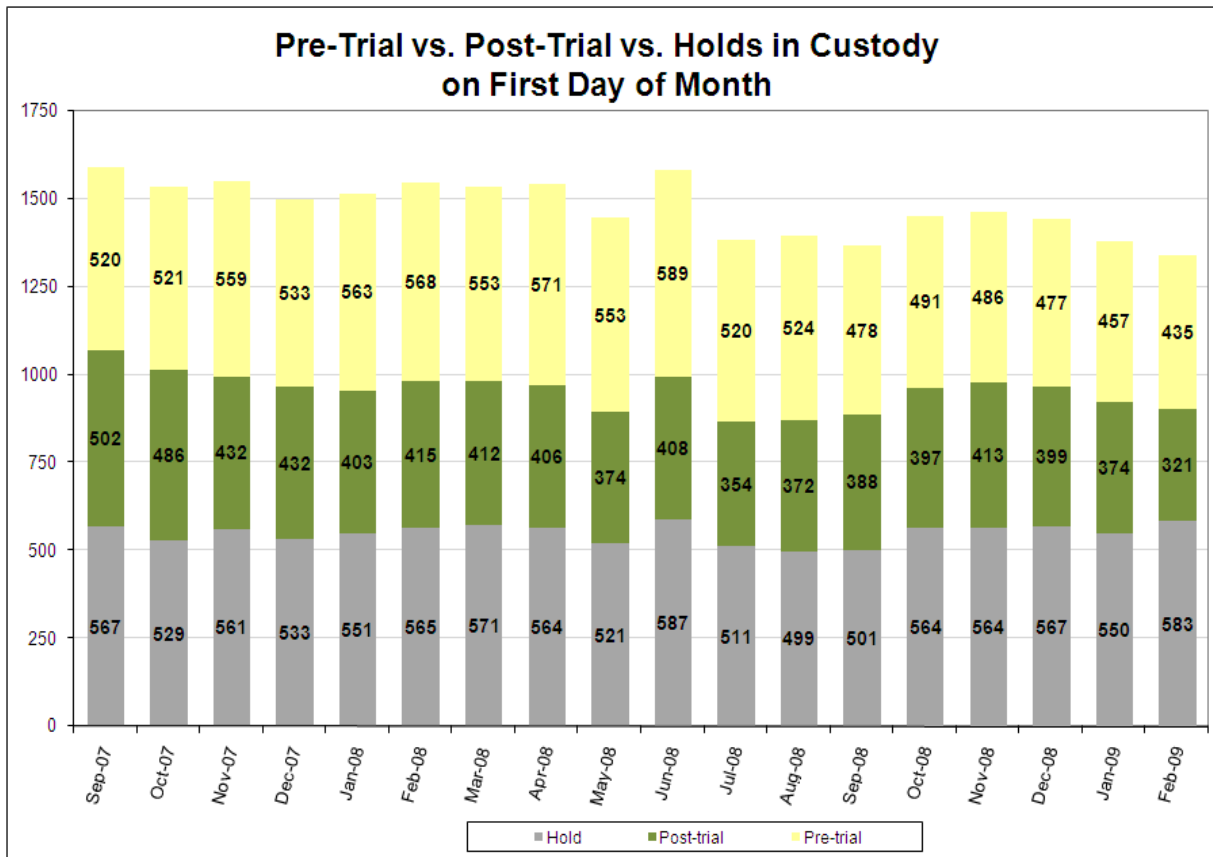


### Monthly Average Score of Emergency Population Releases

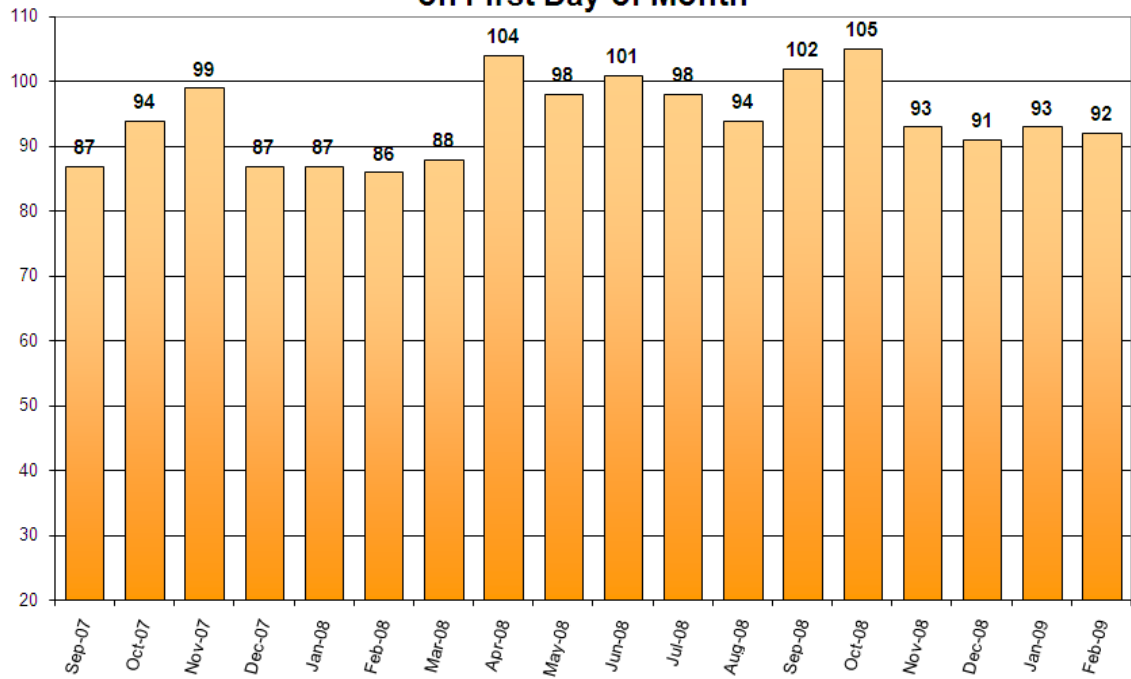




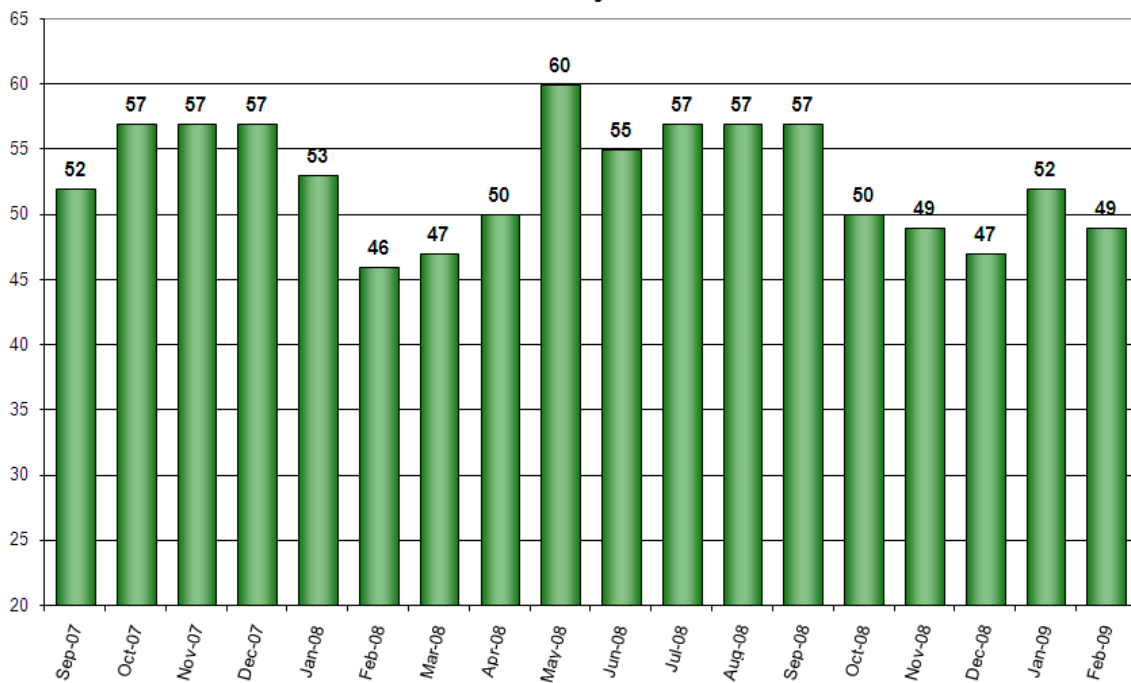
\*Court-ordered and recognizance releases not included.



**Count of Persons Held Pre-trial more than 150 Days on First Day of Month**



**Count of Persons Held Pre-trial on Murder Related Charges on First Day of Month**



**Count of Pre-trial persons with Murder Related Charges  
by Length of Stay on First Day of Month**

