

*Multnomah County Sheriff's Office*

**Monthly Jail Statistics Report  
February 2009**

**MARCH 13, 2009**



**Bob Skipper  
SHERIFF**

**503 988-4300 PHONE  
503 988-4500 TTY**

[www.mcso.us/public/](http://www.mcso.us/public/)

**501 SE HAWTHORNE BLVD., Suite 350 • Portland, OR 97214**

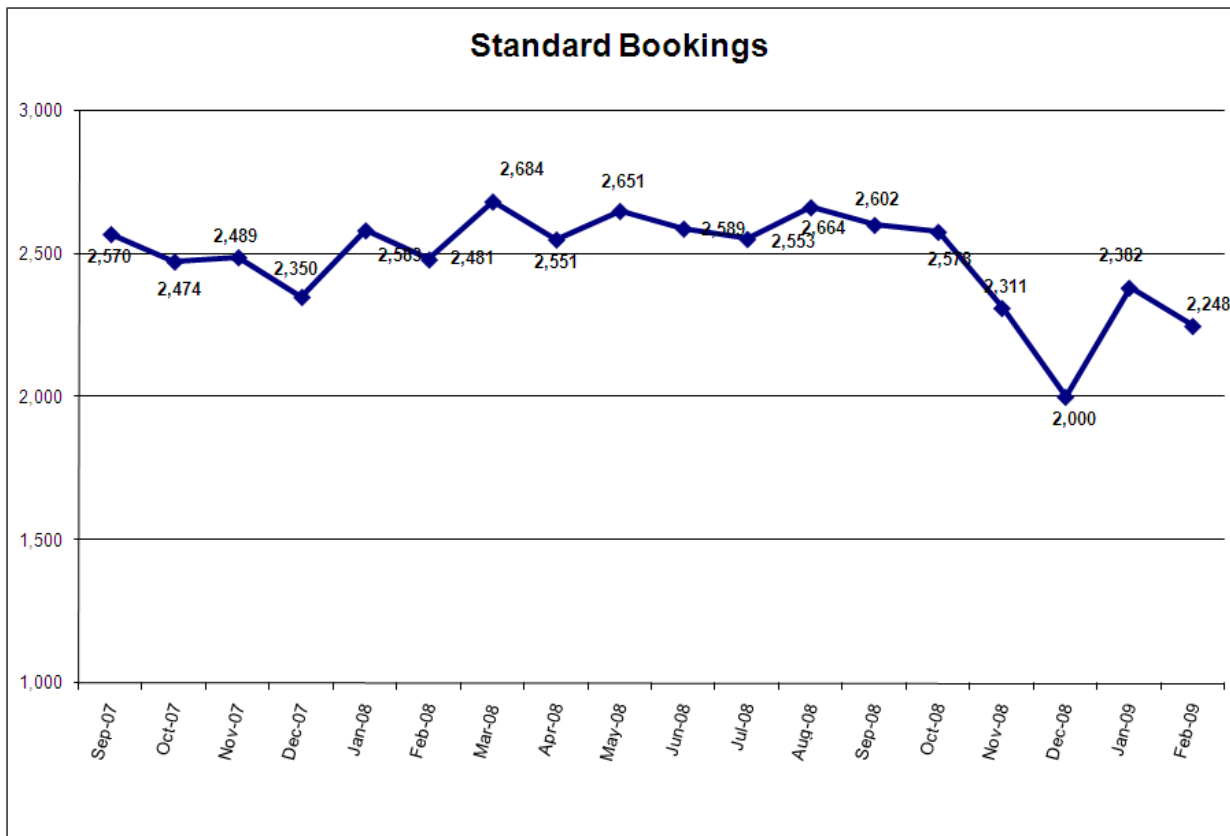
## Multnomah County Monthly Jail Statistics February 2009

Standard bookings totaled 2248 in February, down slightly from January. Turn-self-in (TSI) and in-transit bookings also decreased slightly from January, while the number of Cite & ID bookings was up for a second straight month. Bookings under Project 57 also increased modestly for the second month in a row.

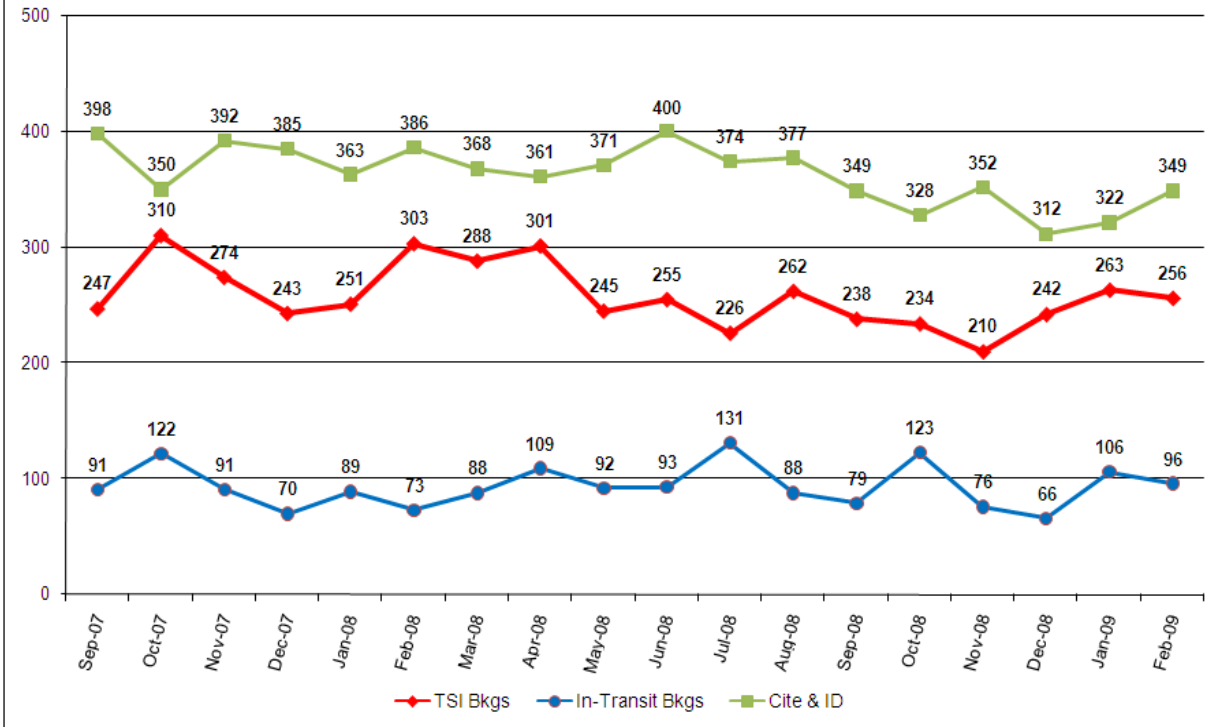
Average length of stay (ALS) for February declined to just over 17 ½ days, but remains comparable to the average for the past 18 months. Though average daily population (ADP) was basically unchanged compared to January at 1364 inmates, it remains low compared to the previous several months.

The number of inmates released from jail in February totaled 2266, down just slightly from January. There were no emergency population releases (EPRs) in February, and the jail did not go into emergency release status on any day during the month. Only 7 time-served offenders were released between 12 AM and 8 AM during February, the time of day when access to public transportation and social services is most limited.

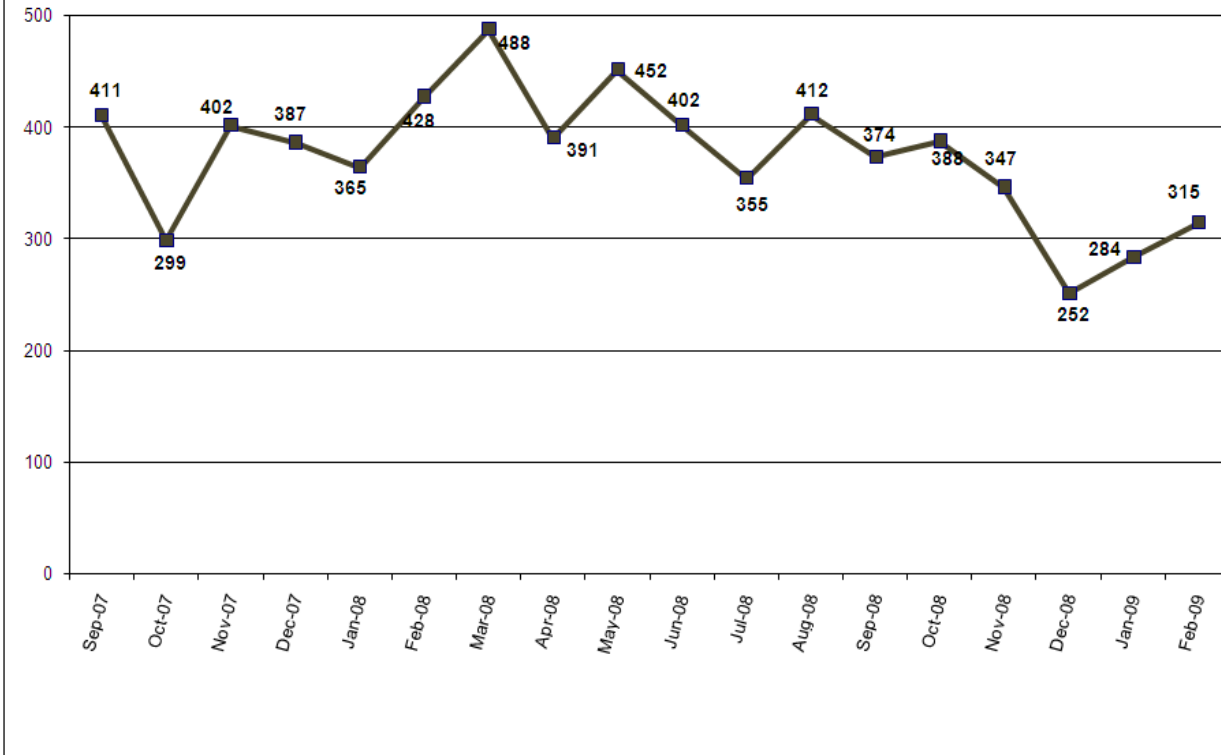
The March 1<sup>st</sup> count of inmates jailed on holds, pre-trial and post-trial remained very similar to February 1<sup>st</sup>. Inmates jailed pre-trial more than 150 days totaled 91 on March 1<sup>st</sup>, similar to the previous several months. Inmates jailed pre-trial on murder charges numbered 47 on March 1<sup>st</sup>, with 7 accused murderers now held more than two years.



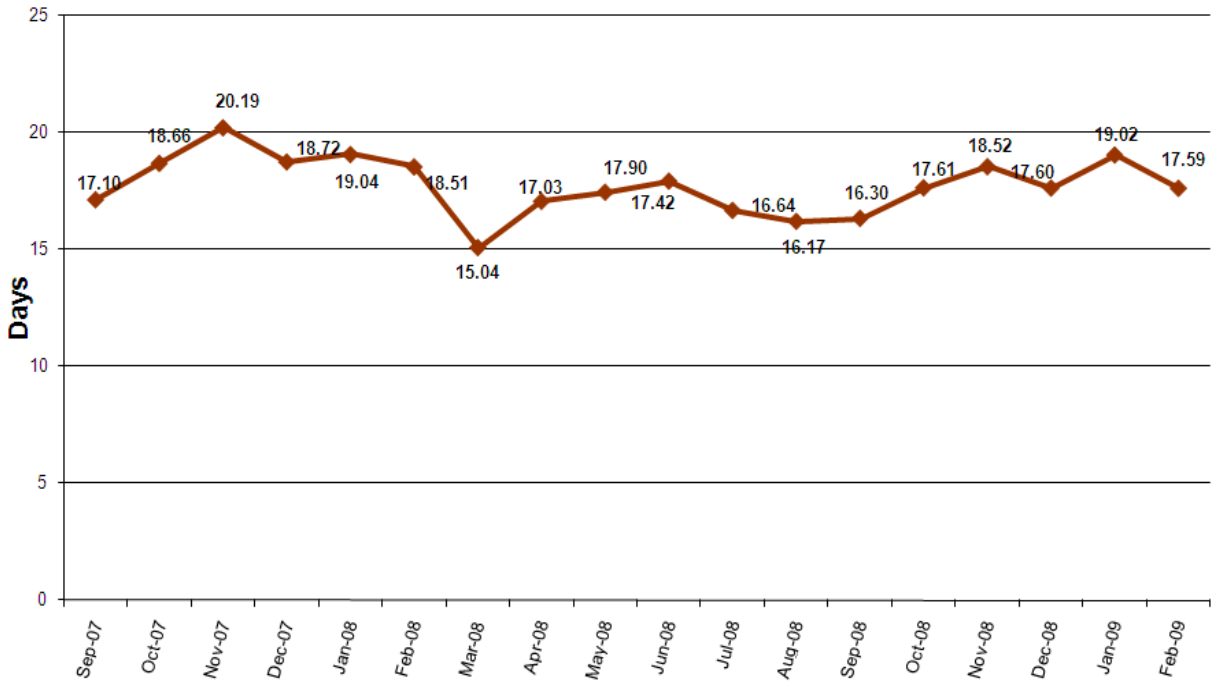
### Non-Standard Bookings



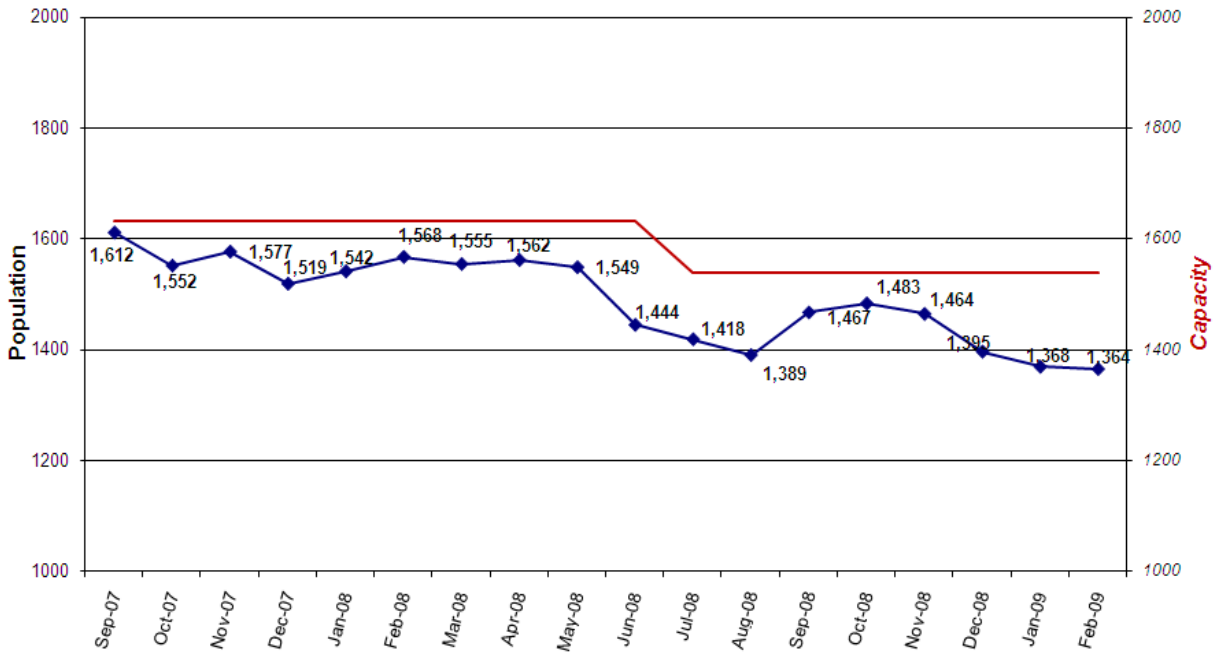
### Portland 57 Project Bookings (subset of standard bookings)

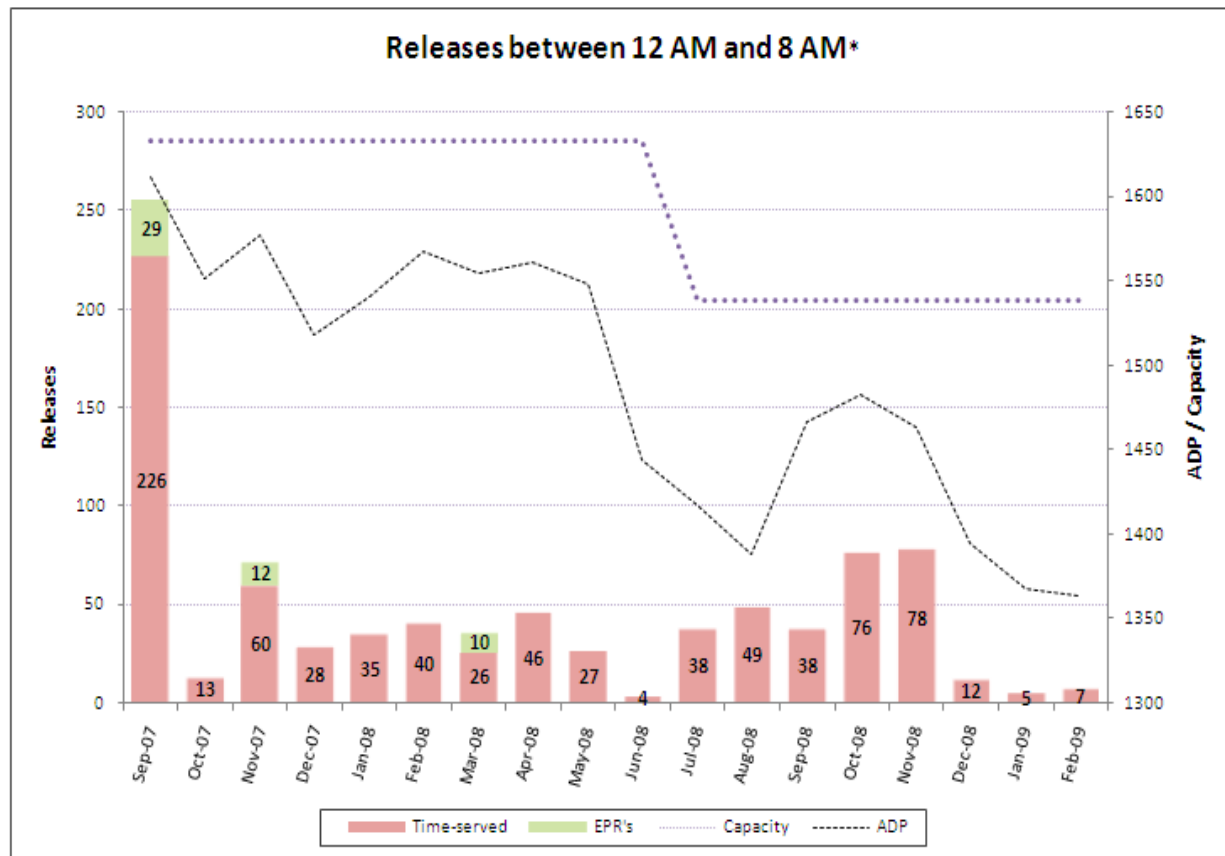
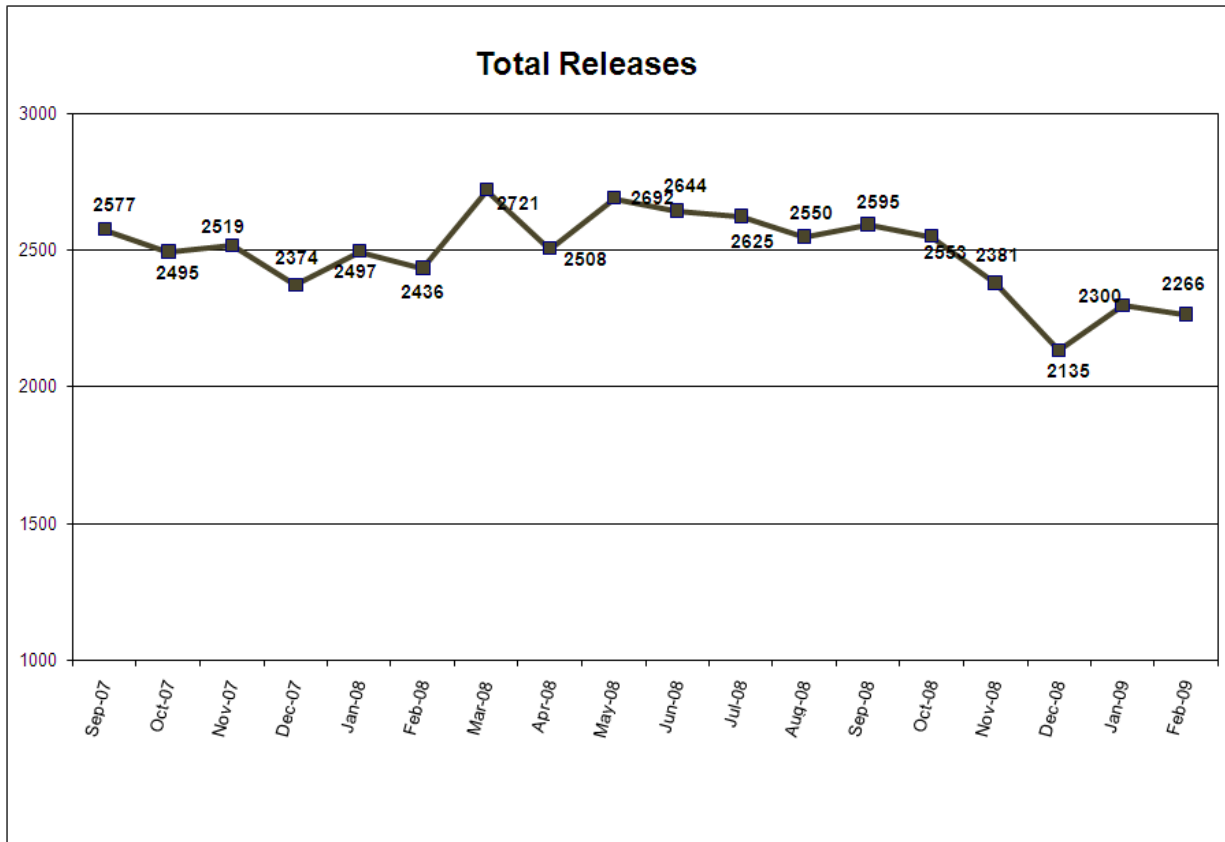


### Average Length of Stay (in days)



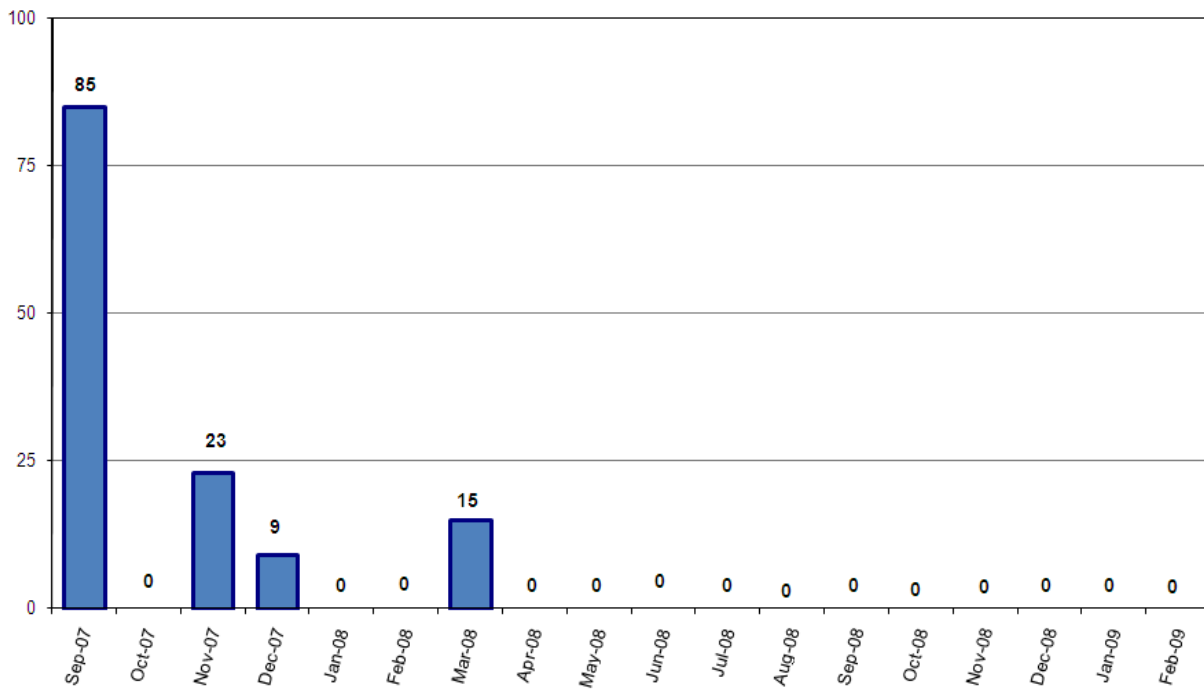
### Average Daily Population



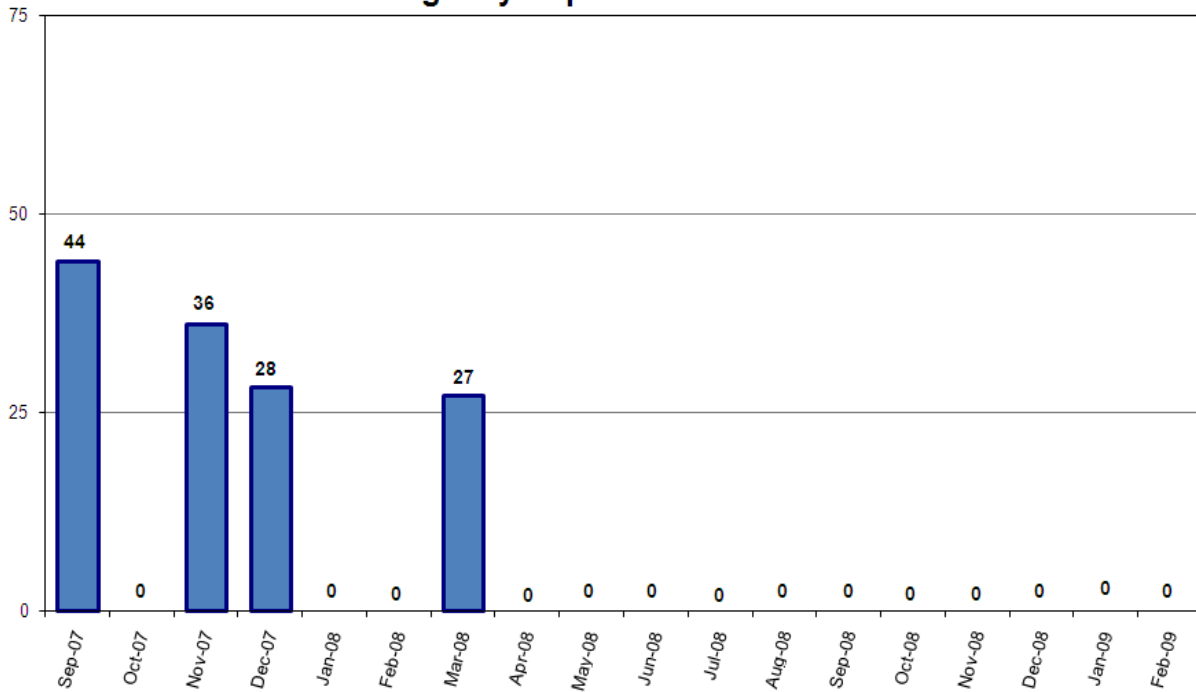


\*Court-ordered and recognition releases not included.

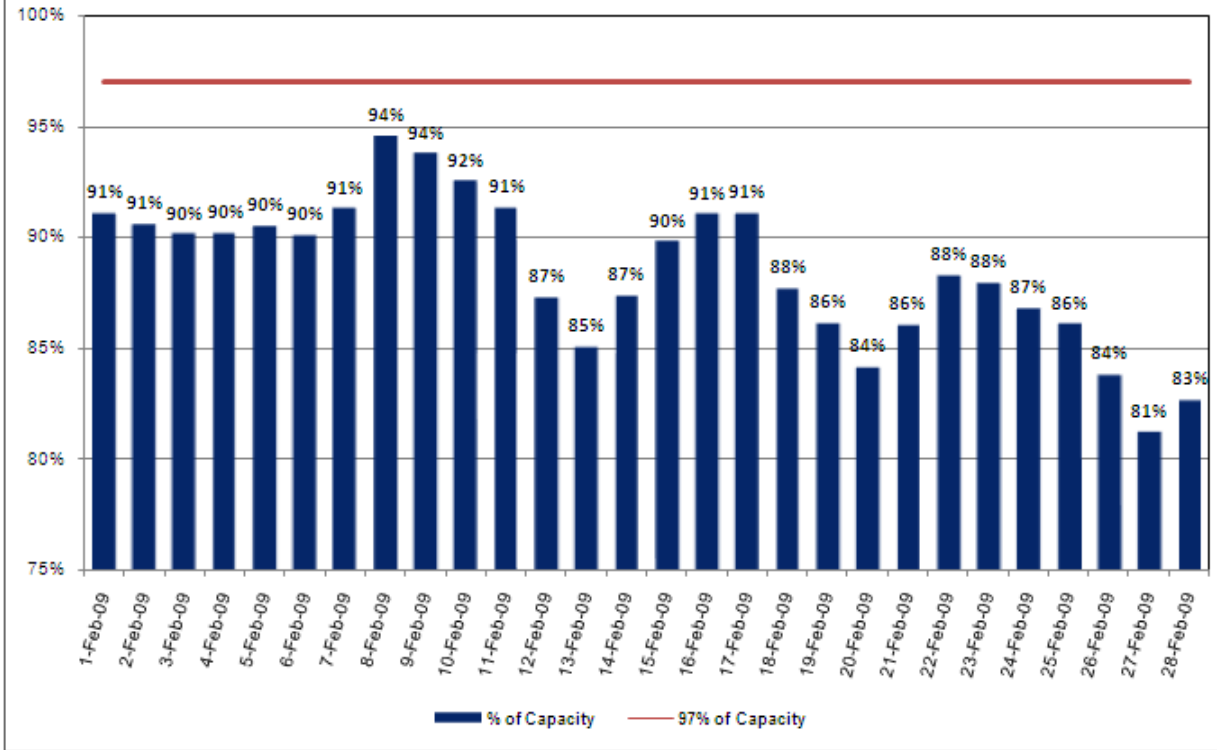
### Emergency Population Releases by Month



### Monthly Average Score of Emergency Population Releases

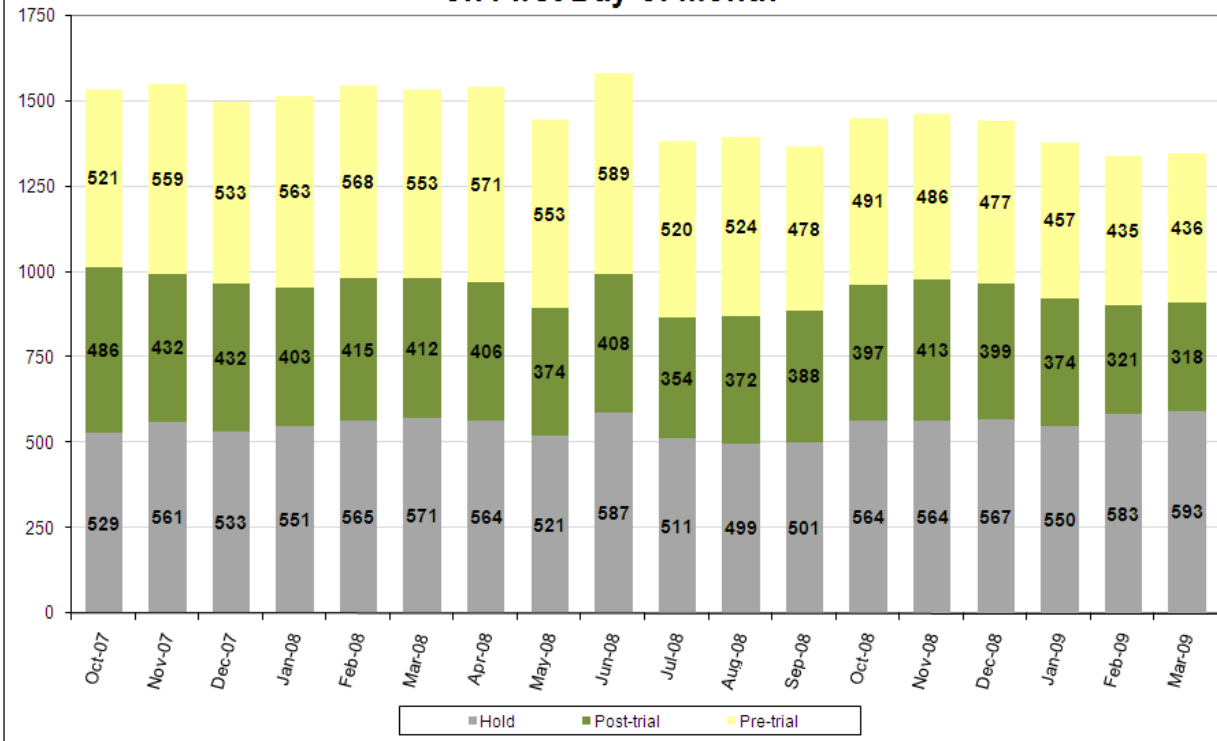


### February Percentage of 1539 Capacity by Day\*

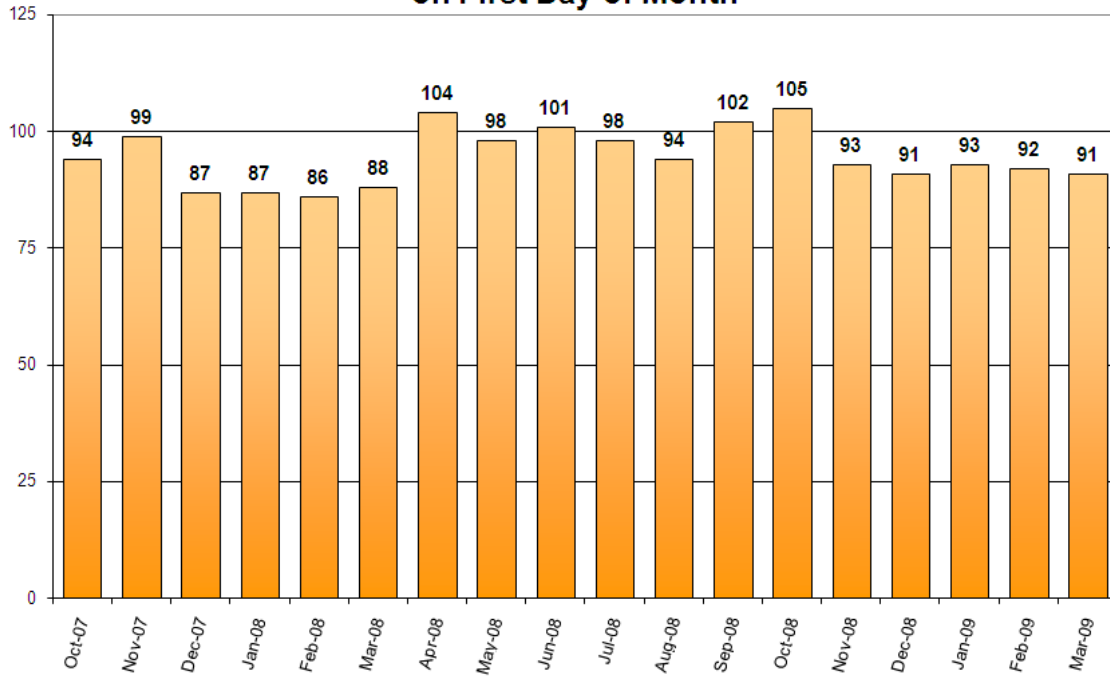


\*Red bars indicate days on which EPRs occurred, if any. Note that EPRs do not always or only occur when capacity exceeds the 97% threshold. Efforts are made to balance the population to the demands of the classification system for specific types of jail beds and balance the space needs for male or female inmates. Additionally, jail capacity varies throughout the day, with these capacity calculations based on 10PM population counts.

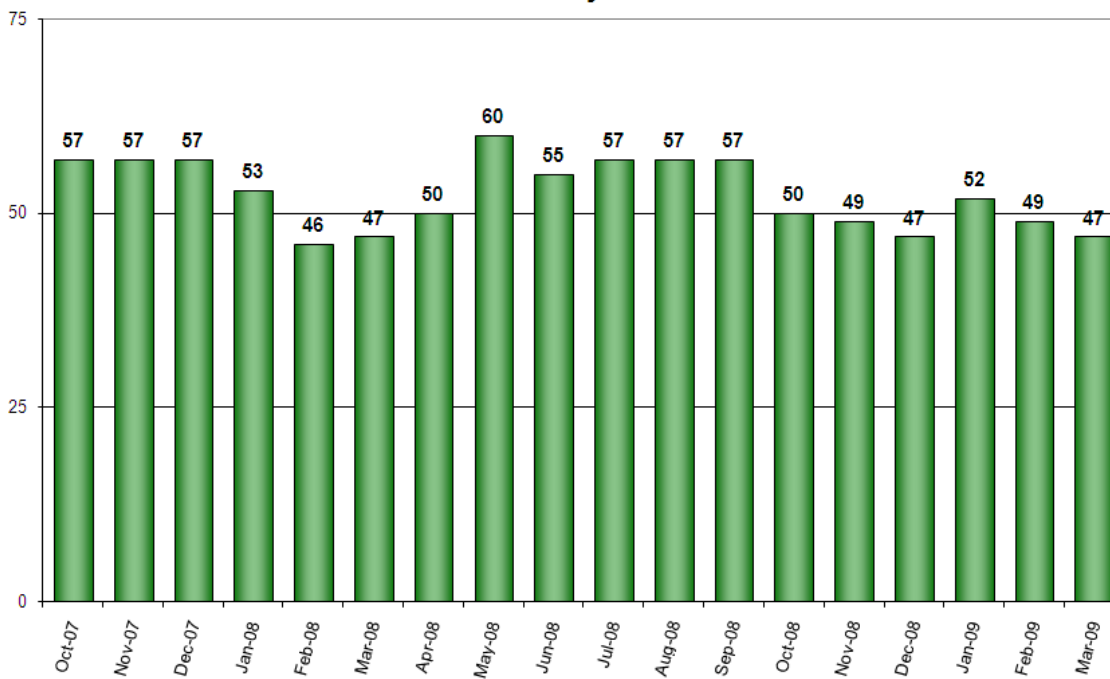
### Pre-Trial vs. Post-Trial vs. Holds in Custody on First Day of Month



**Count of Persons Held Pre-trial more than 150 Days on First Day of Month**



**Count of Persons Held Pre-trial on Murder Related Charges on First Day of Month**



### Count of Pre-trial persons with Murder Related Charges by Length of Stay on First Day of Month

