

Multnomah County Sheriff's Office

**Monthly Jail Statistics Report
August 2009**

SEPTEMBER 14, 2009



**Bob Skipper
SHERIFF**

**503 988-4300 PHONE
503 988-4500 TTY**

www.mcso.us/public/

501 SE HAWTHORNE BLVD., Suite 350 • Portland, OR 97214

Multnomah County Monthly Jail Statistics August 2009

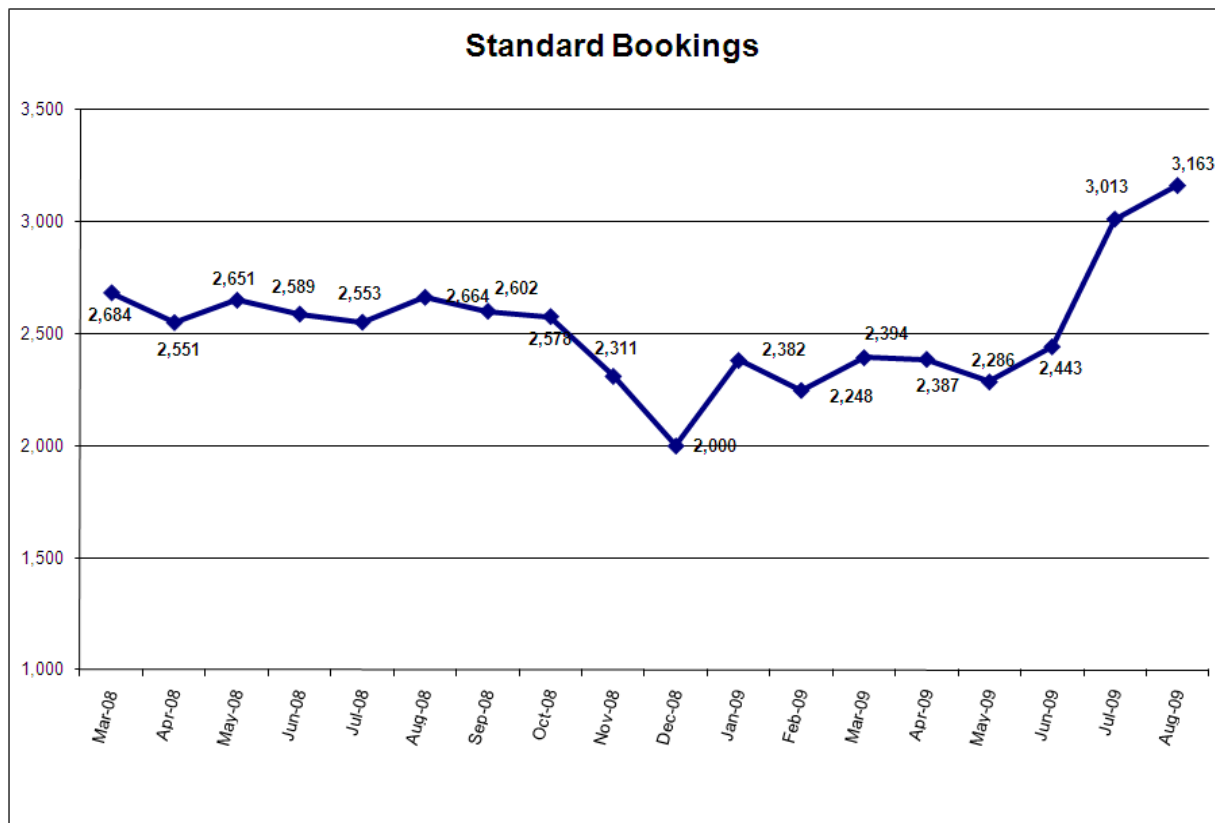
The policy changes from July 2009 are still reflected in the August statistics. Since Cite and ID bookings and the Project 57 program were both eliminated, the August counts for those data are zero. We will discontinue reporting the data for these two variables in subsequent reports.

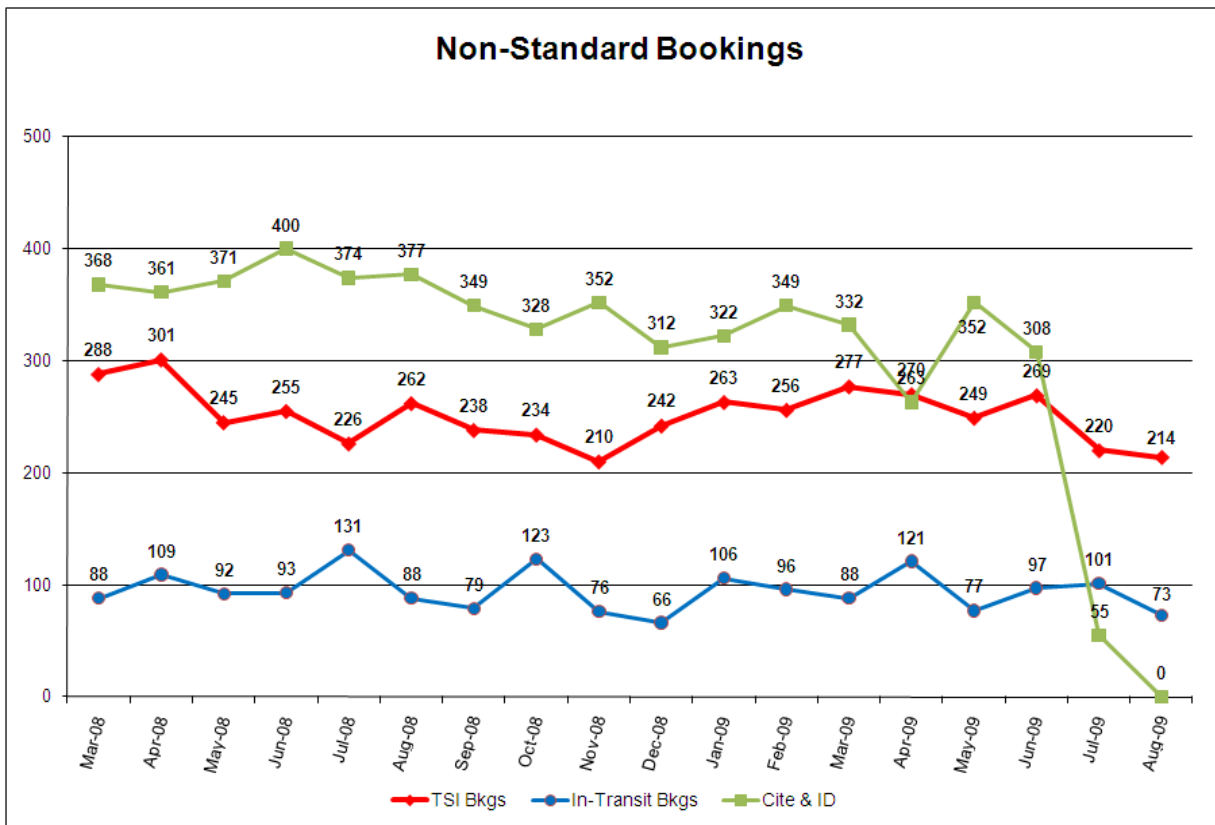
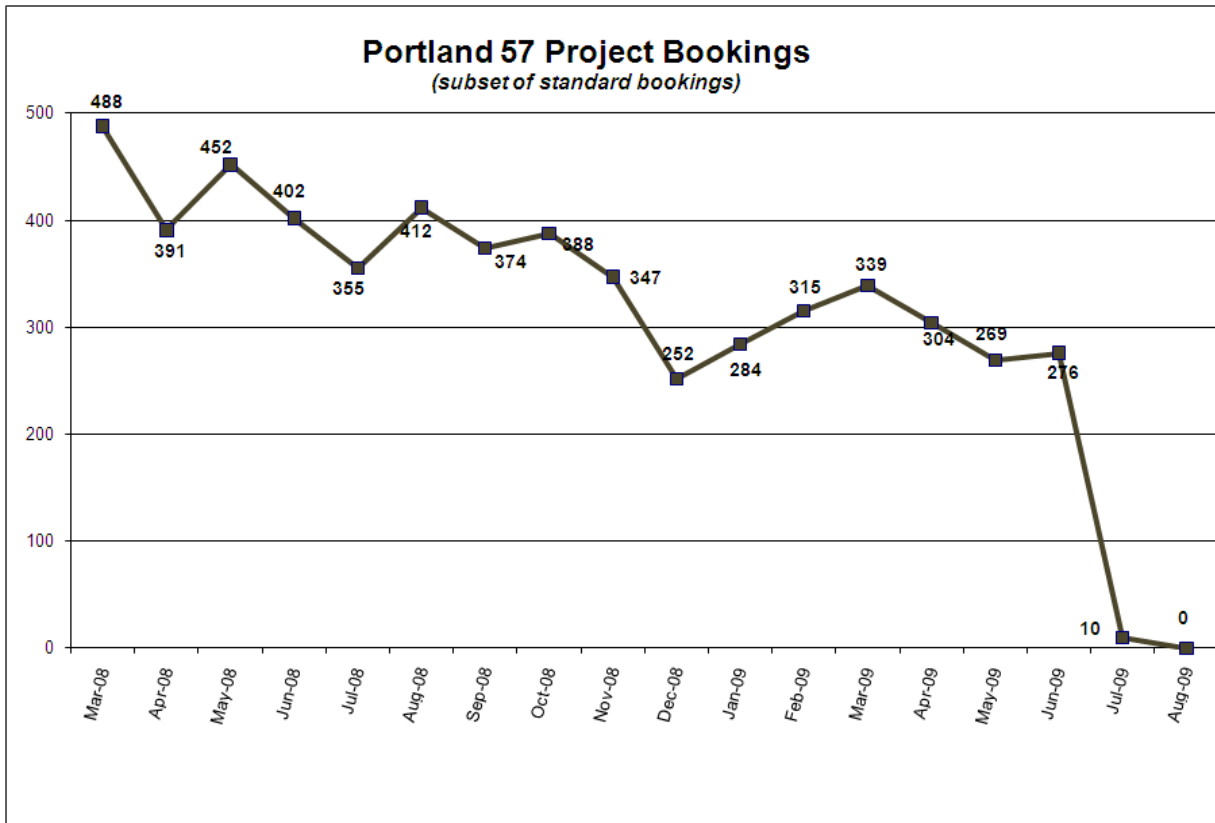
Standard bookings increased to 3163 in August. Turn-self-in (TSI) bookings dropped slightly from July to August (from 220 to 214) and in-transit bookings dropped more dramatically (from 101 to 73). The daily count of exclusive US Marshal inmates ranged from 144 to 181 in August.

Average length of stay (ALS) decreased by over two days from July to August (from 14.21 days to 11.93 days). This is the shortest average length of stay observed in the past 18 months. Average daily population (ADP) rose slightly in August to 1296 inmates.

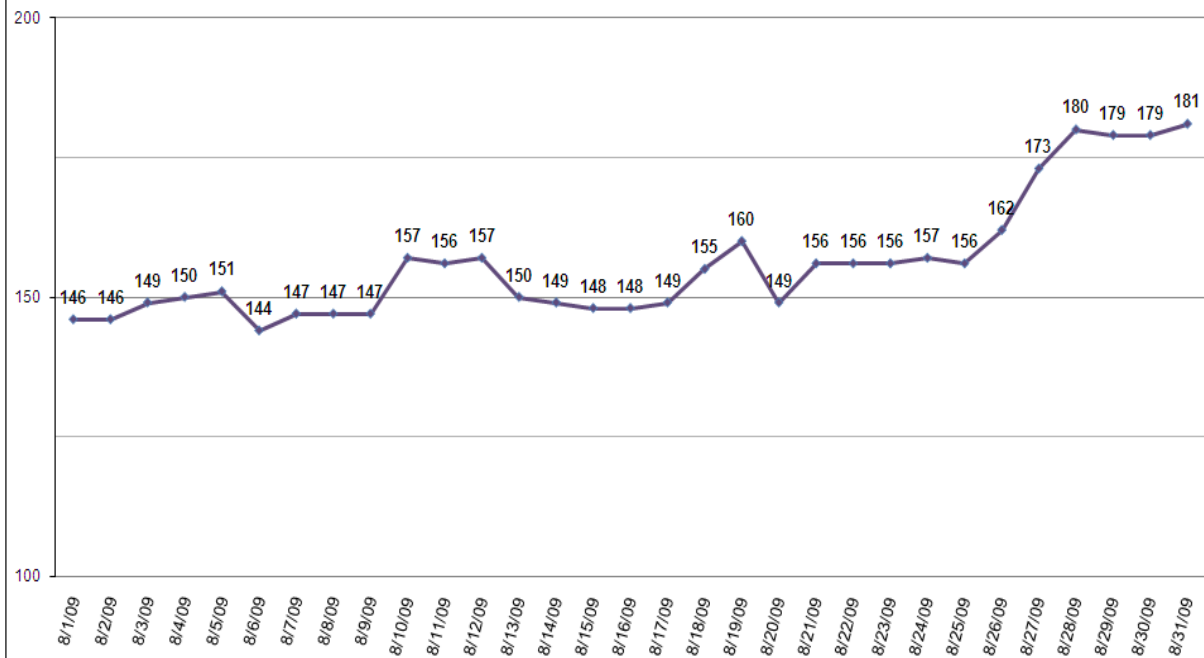
There were 3096 releases in August. Recognizance releases increased from July to August, rising from 1180 to 1290. A total of 21 pre-trial inmates were subject to force release (also known as an emergency population release or EPR) on two separate days in August. August releases between 12 AM and 8 AM, the time of day when access to transportation and social services is most limited, included 118 time-served offenders and all of the 21 inmates who were force released.

From August 1 to September 1, the count of inmates jailed post-trial decreased (to 297), while the number of pre-trial and inmates jailed on holds increased (at 495 and 506, respectively). Inmates jailed pre-trial more than 150 days increased slightly to 74 on September 1, while the number of inmates jailed pre-trial on murder charges remained at 49.

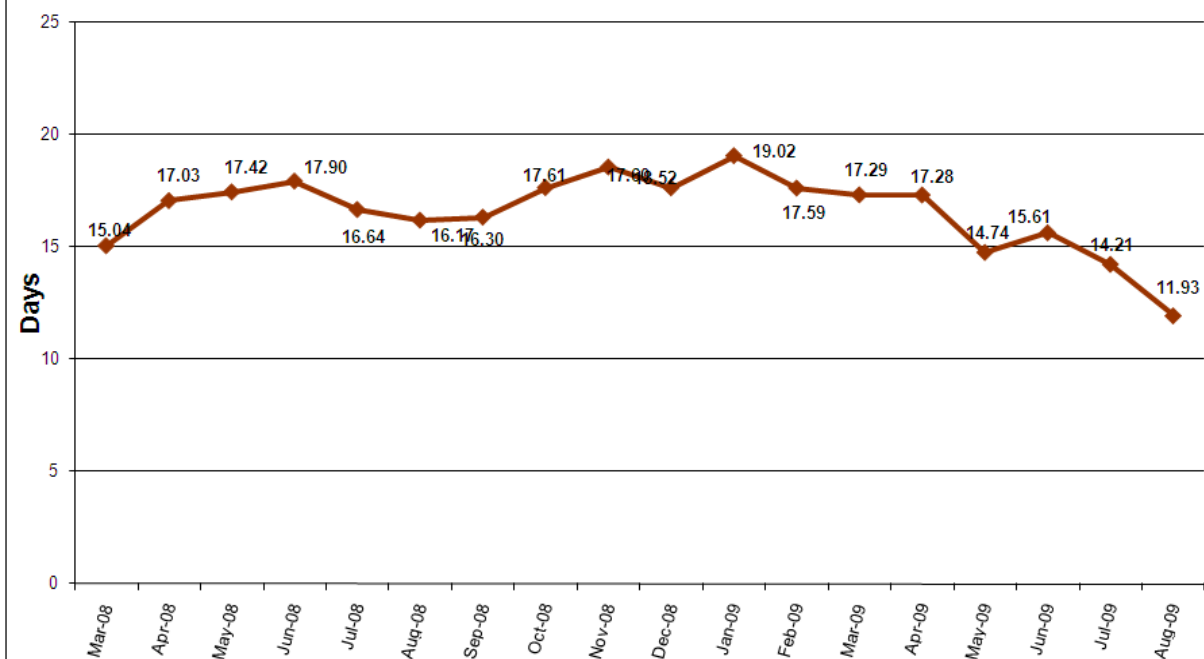


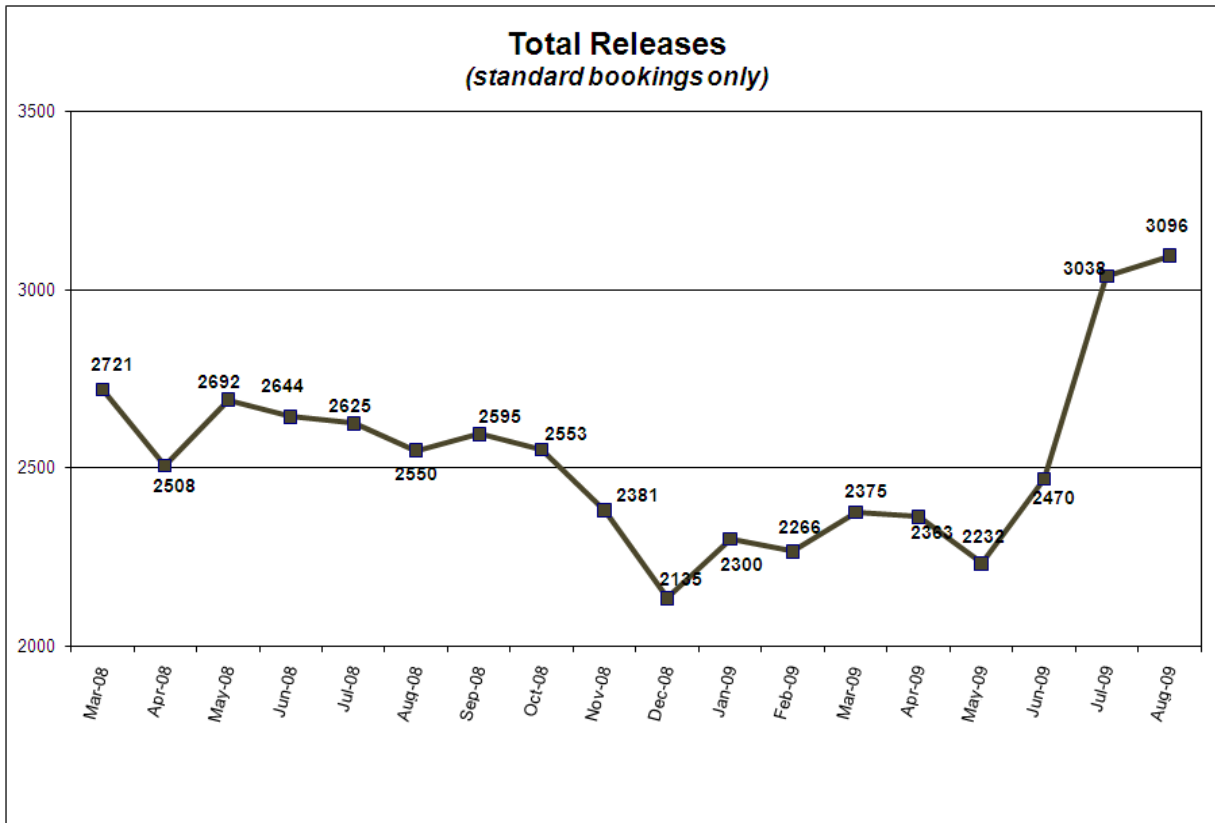
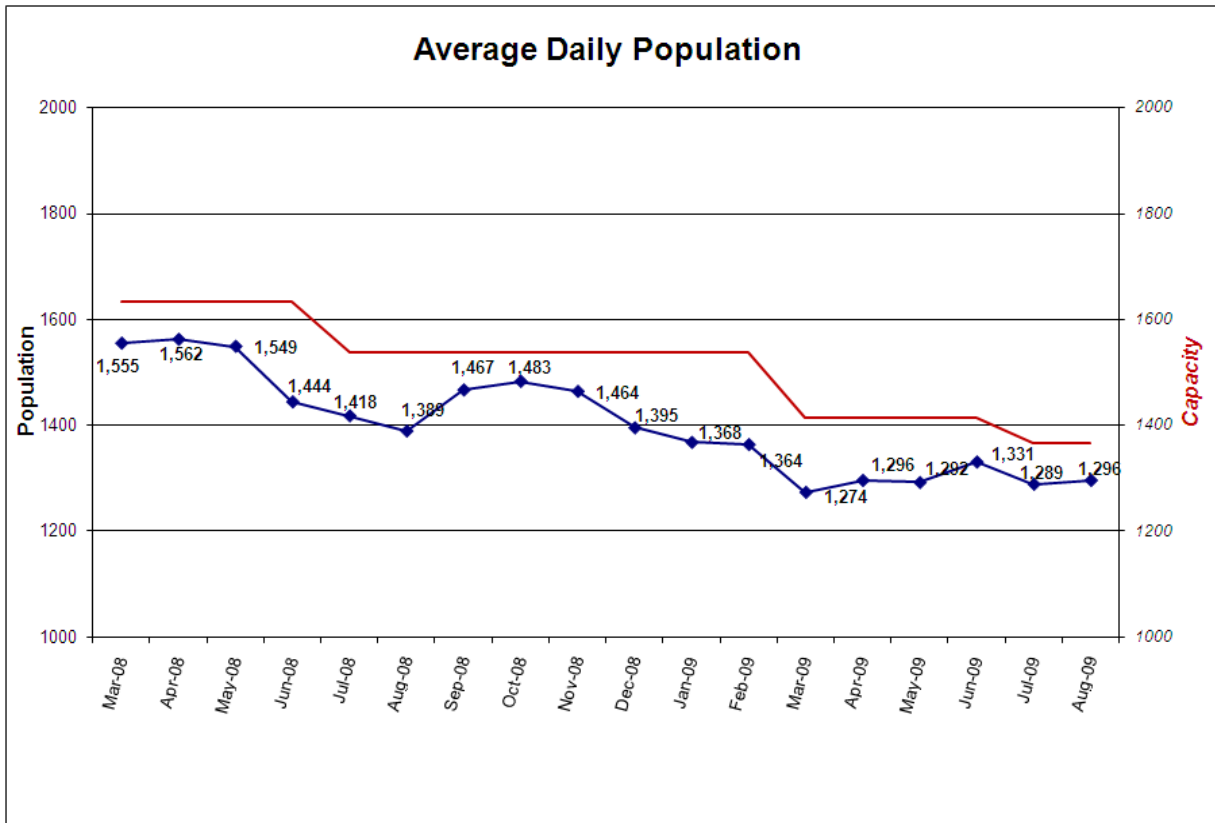


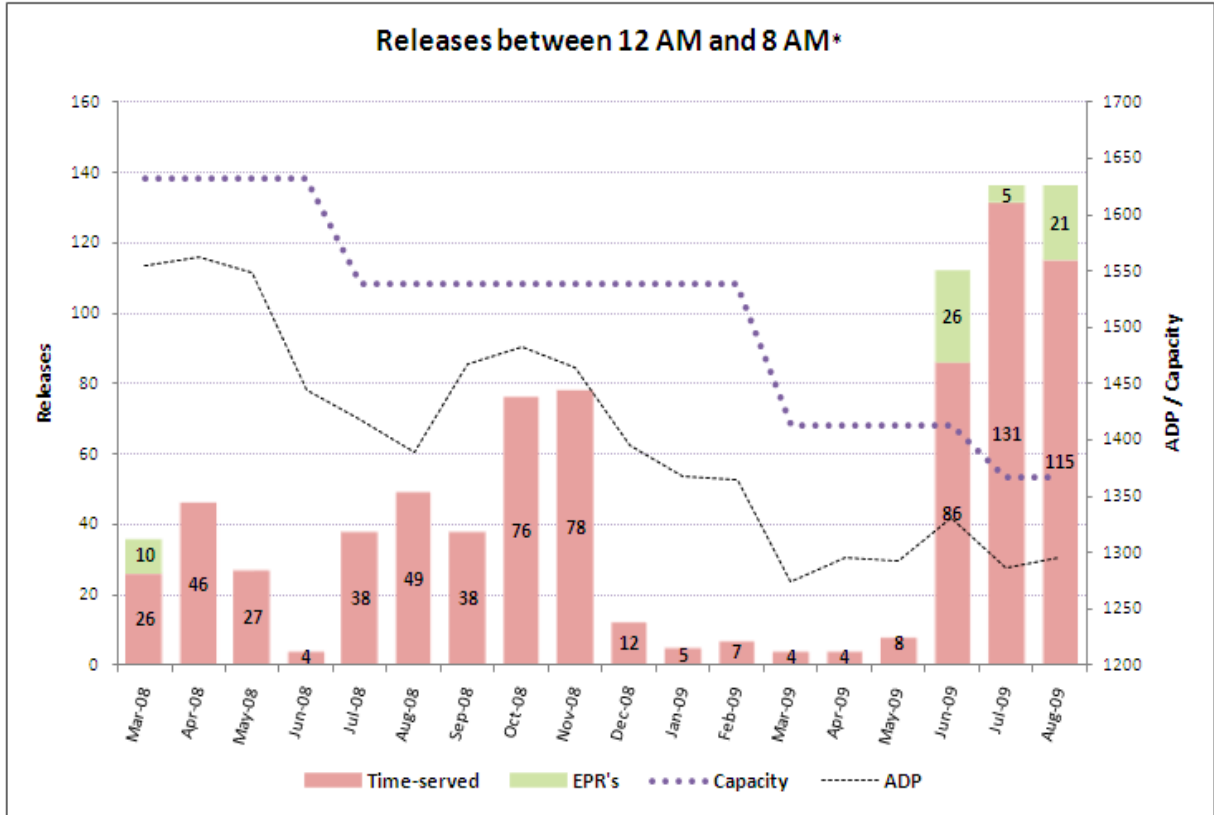
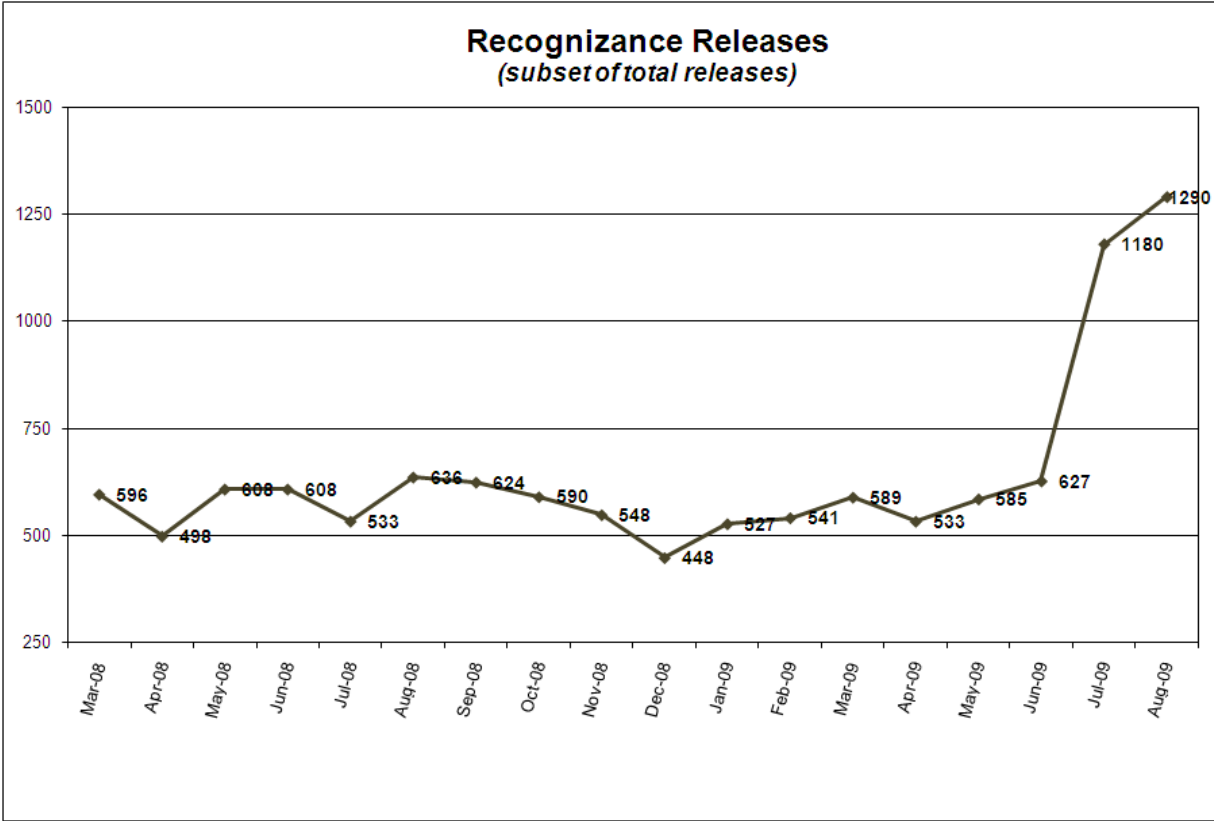
Daily Count of Exclusive U.S. Marshal Inmates



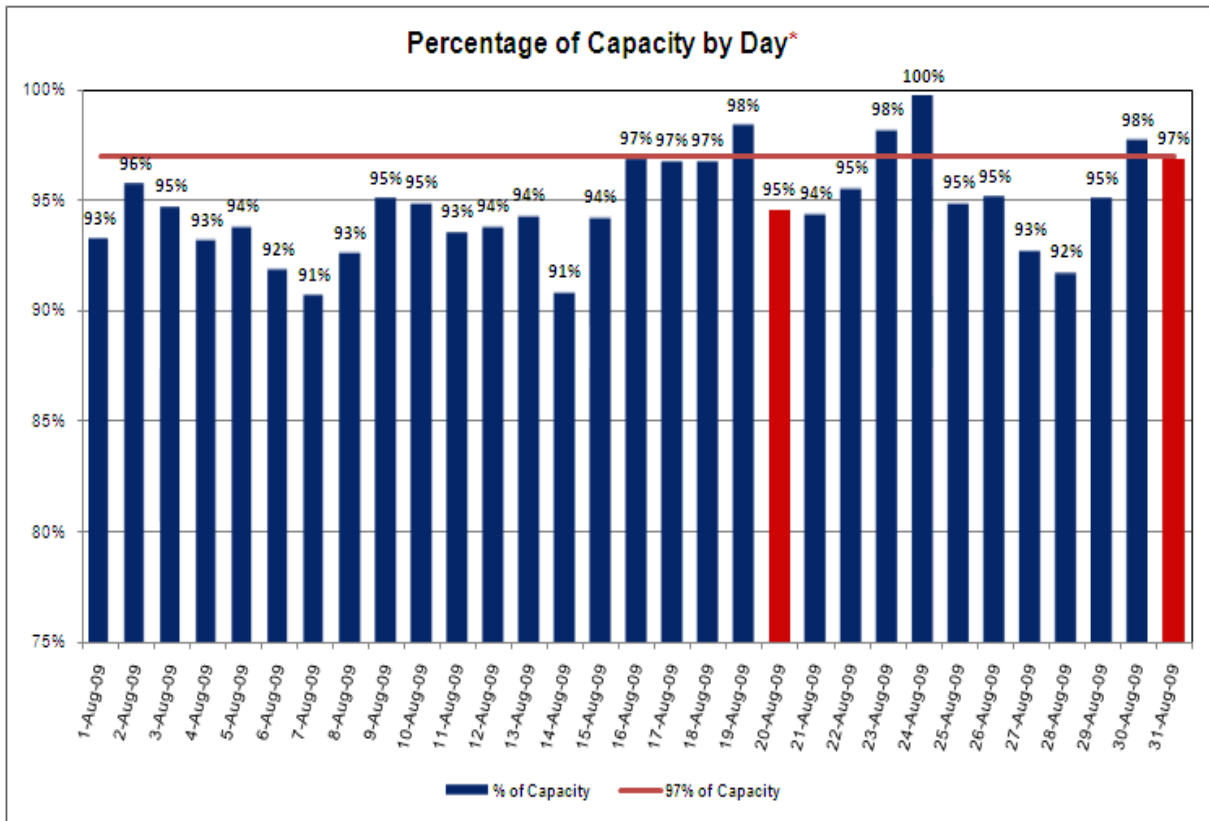
Average Length of Stay (in days)



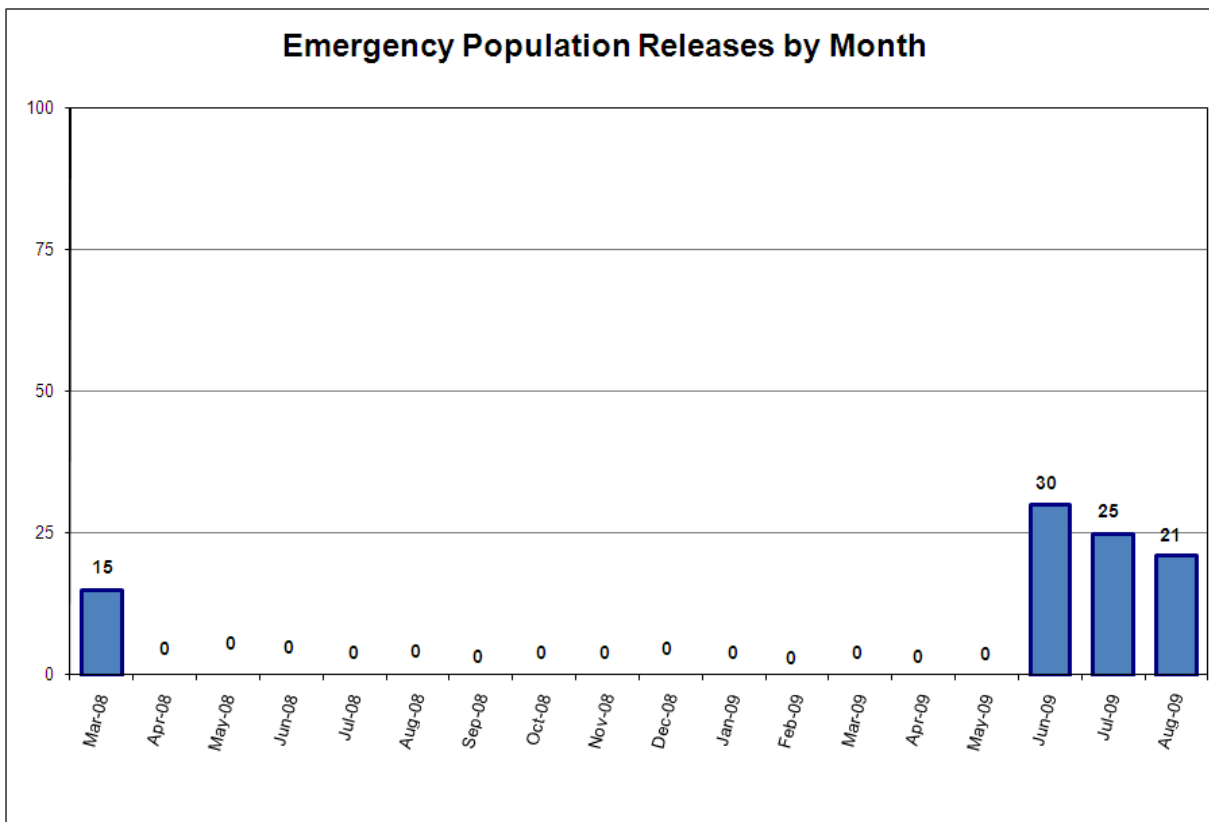


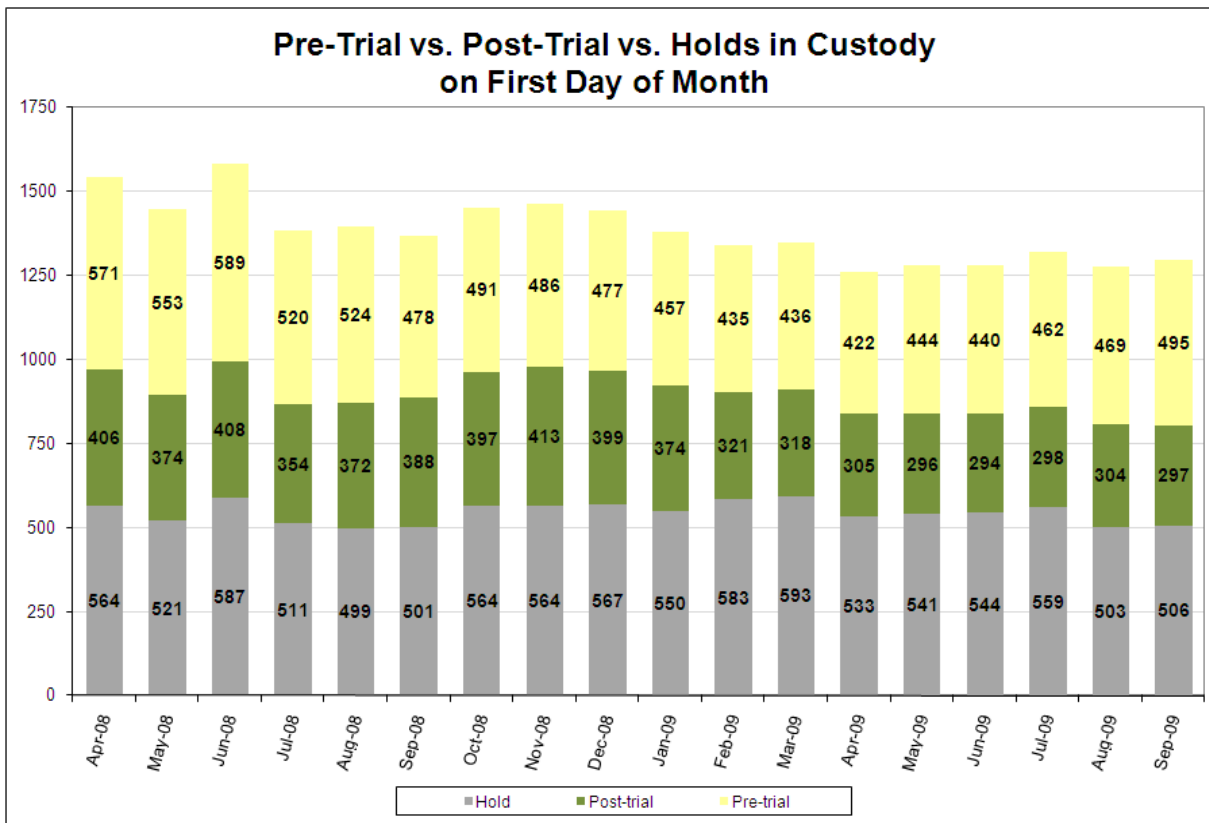
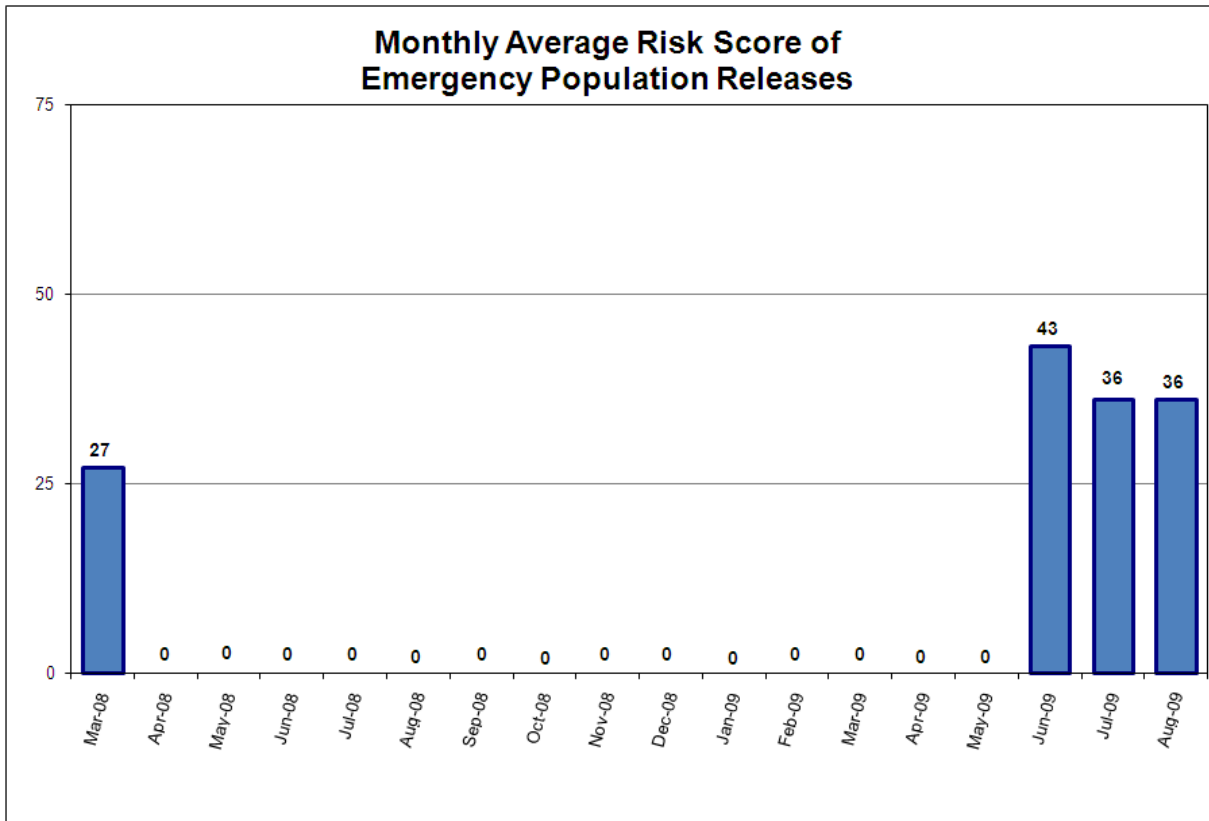


*Court-ordered and recognizance releases not included.

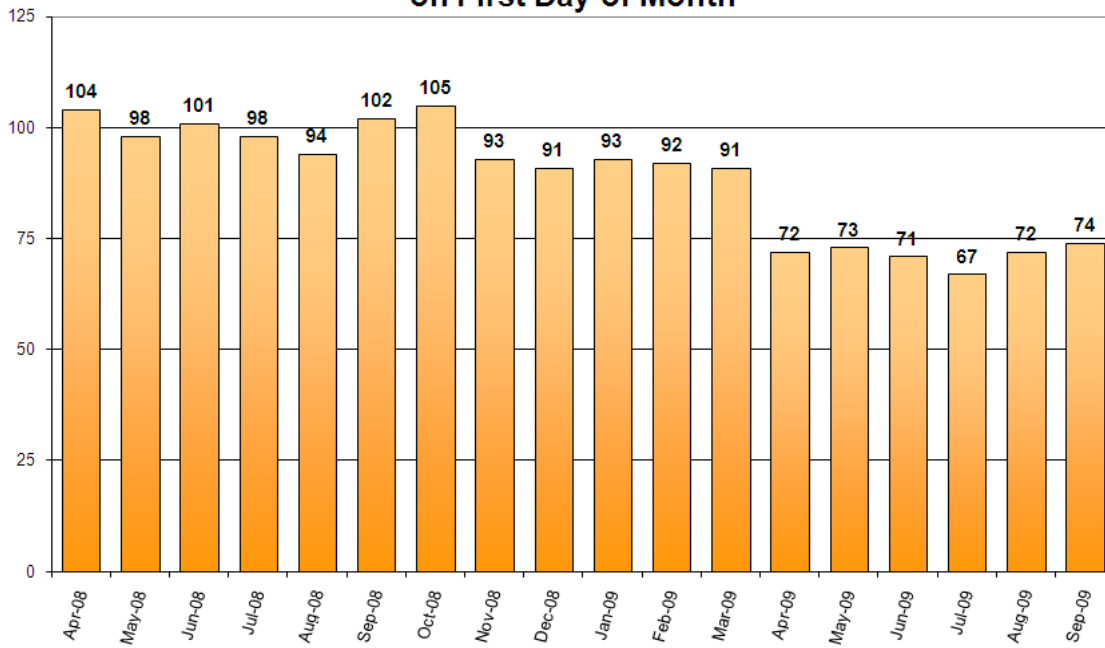


*Red bars indicate days on which EPRs occurred, if any. Note that EPRs do not always or only occur when capacity exceeds the 97% threshold. Efforts are made to balance the population to the demands of the classification system for specific types of jail beds and balance the space needs for male or female inmates. Additionally, jail capacity varies throughout the day, with these capacity calculations based on 10PM population counts.

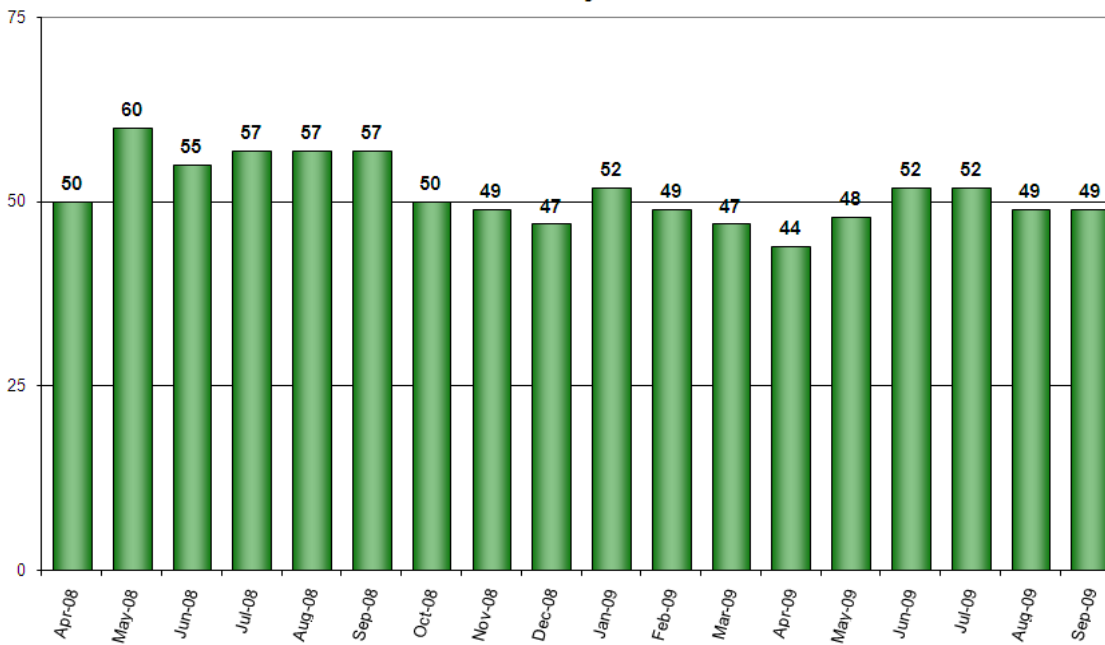




Count of Persons Held Pre-trial more than 150 Days on First Day of Month



Count of Persons Held Pre-trial on Murder Related Charges on First Day of Month



Count of Pre-trial persons with Murder Related Charges by Length of Stay on First Day of Month

