

Multnomah County Sheriff's Office

**Monthly Jail Statistics Report
April 2009**

MAY 6, 2009



**Bob Skipper
SHERIFF**

**503 988-4300 PHONE
503 988-4500 TTY**

www.mcso.us/public/

501 SE HAWTHORNE BLVD., Suite 350 • Portland, OR 97214

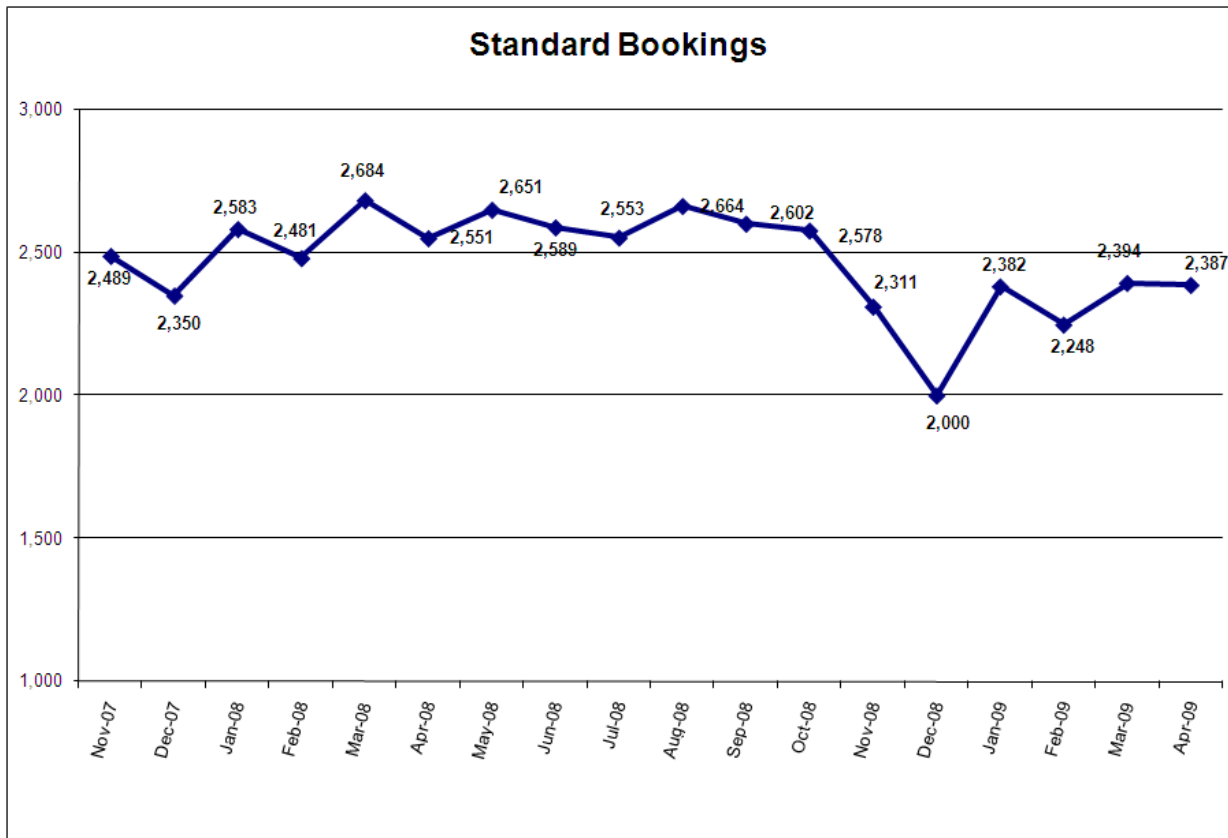
Multnomah County Monthly Jail Statistics April 2009

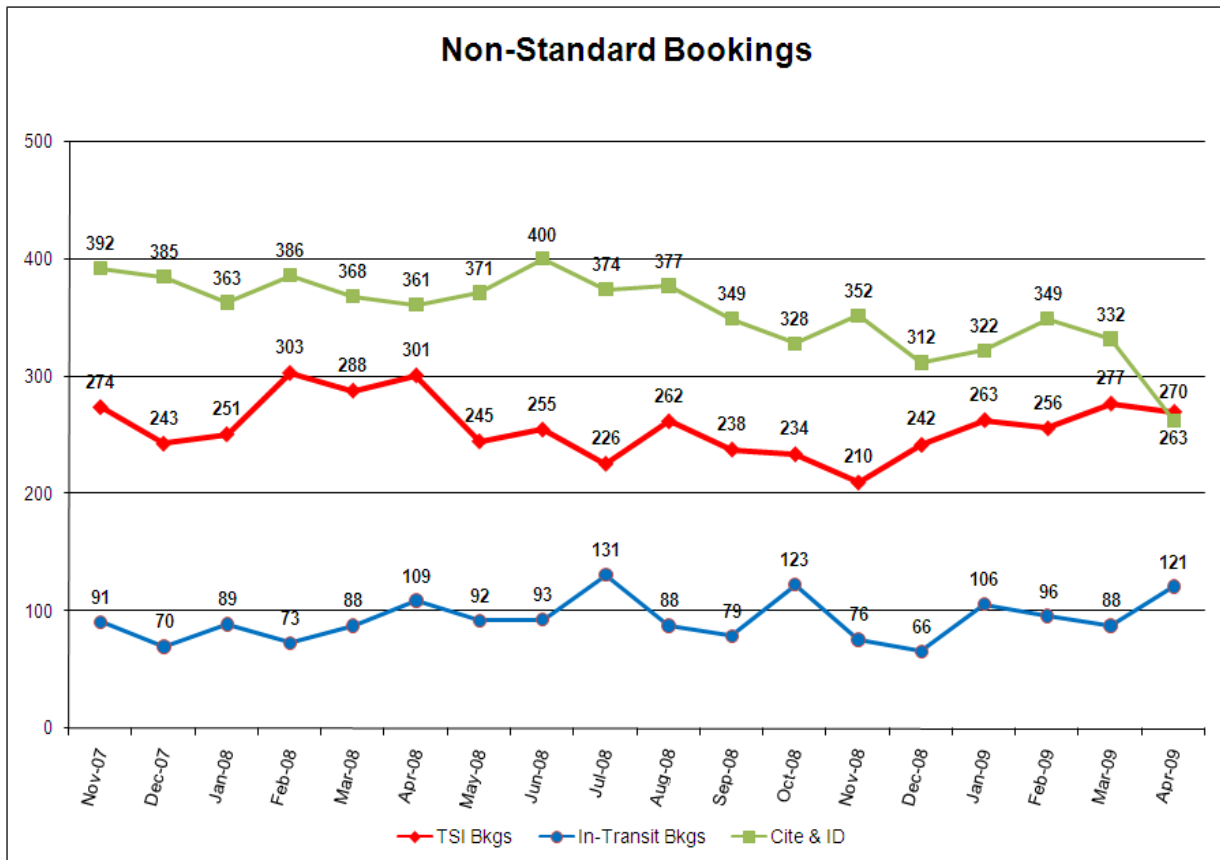
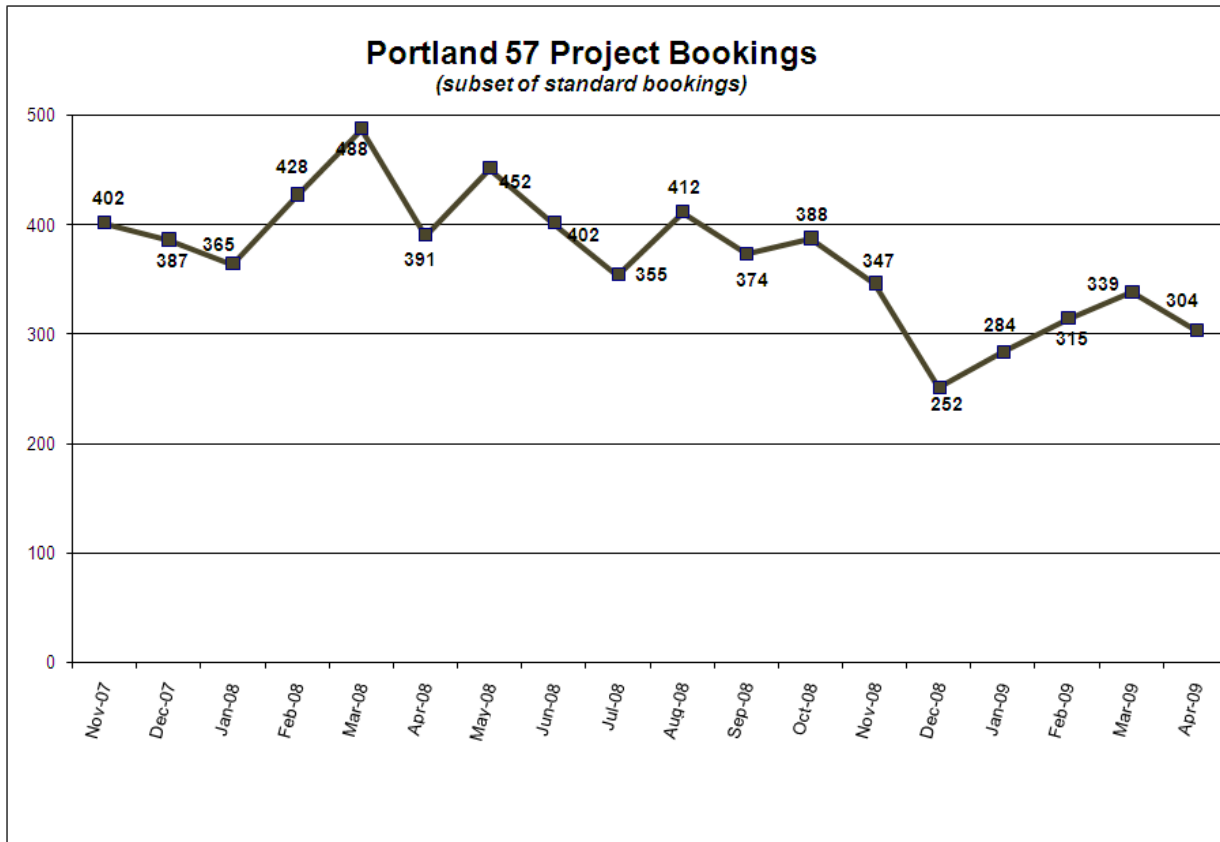
There were 2387 standard bookings in April, nearly identical to the number for March. Cite & ID bookings dropped from 332 in March to 263 in April, a precipitous decline of more than 25%. Project 57 bookings declined slightly over March (from 339 to 304), while turn-self-in (TSI) bookings remained comparable to the previous month and in-transit bookings increased substantially.

Average length of stay (ALS) for April stood unchanged at just over 17 days. Average daily population (ADP) increased slightly to 1296 inmates after falling sharply in March when there was a reduction in budgeted jail capacity.

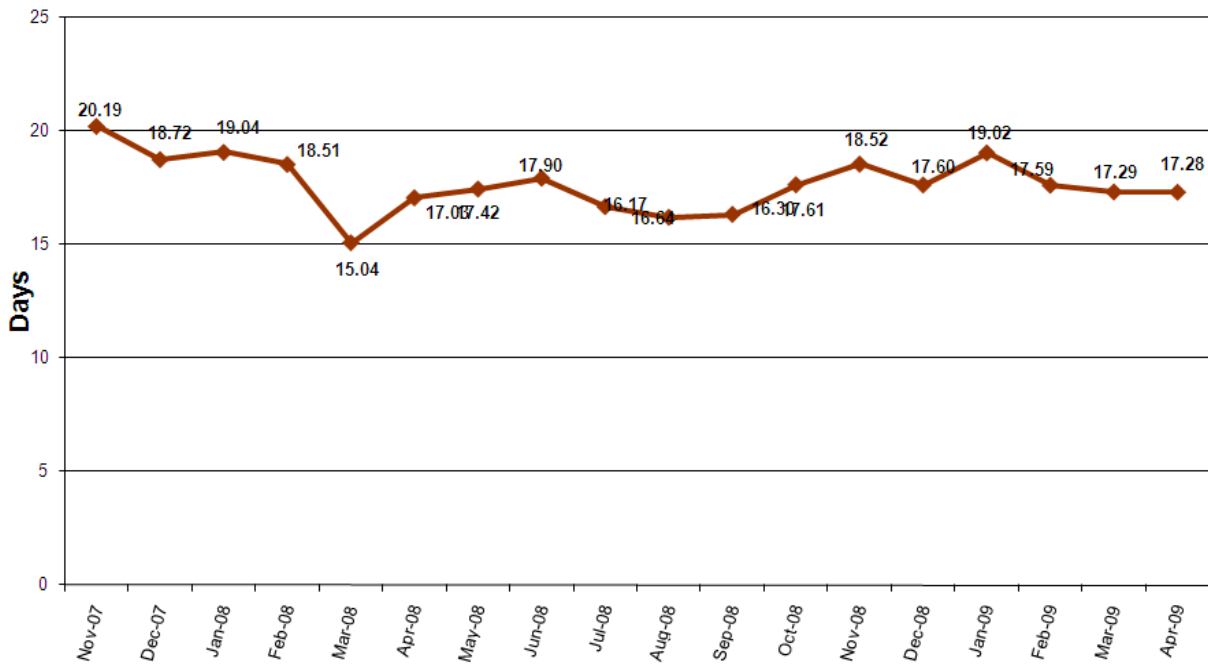
Total releases numbered 2363 in April, very similar to March. There were no emergency population releases (EPRs) in April, and the jail did not go into emergency release status on any day during the month. Only 4 time-served offenders were released between 12 AM and 8 AM in April, the time of day when access to public transportation and social services is most limited.

The May 1st count of inmates jailed on holds, pre-trial and post-trial remained comparable to April 1st. Inmates jailed pre-trial more than 150 days stood at 73 on May 1st, while the count of inmates jailed pre-trial on murder charges numbered 48.

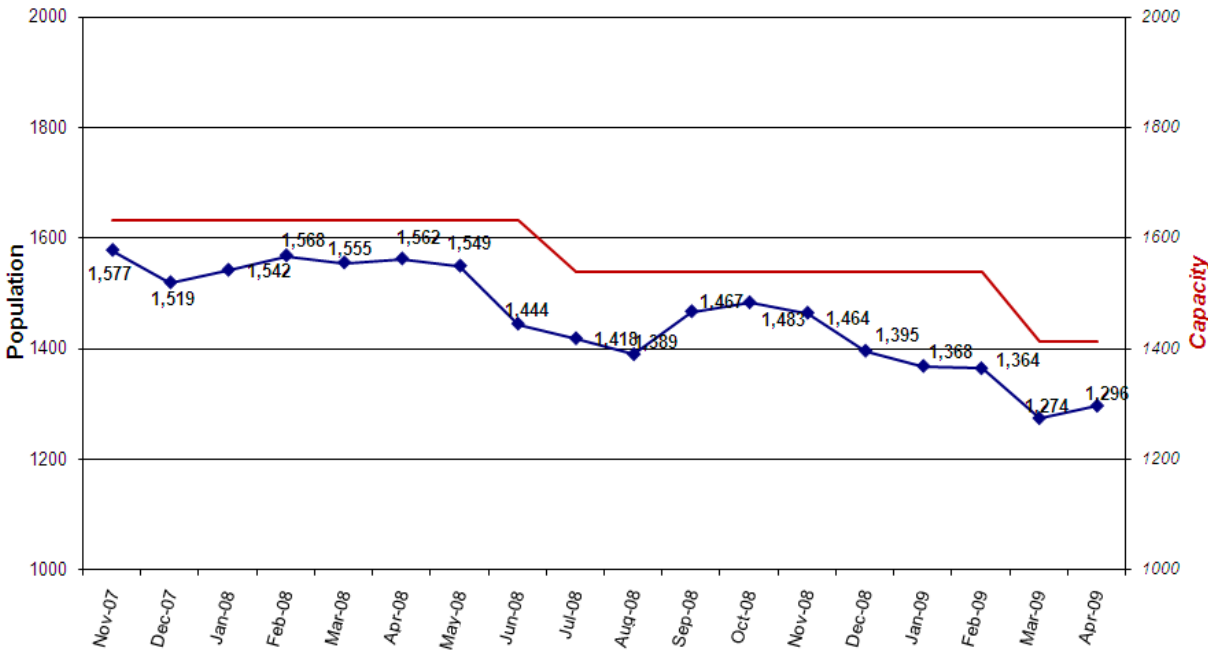


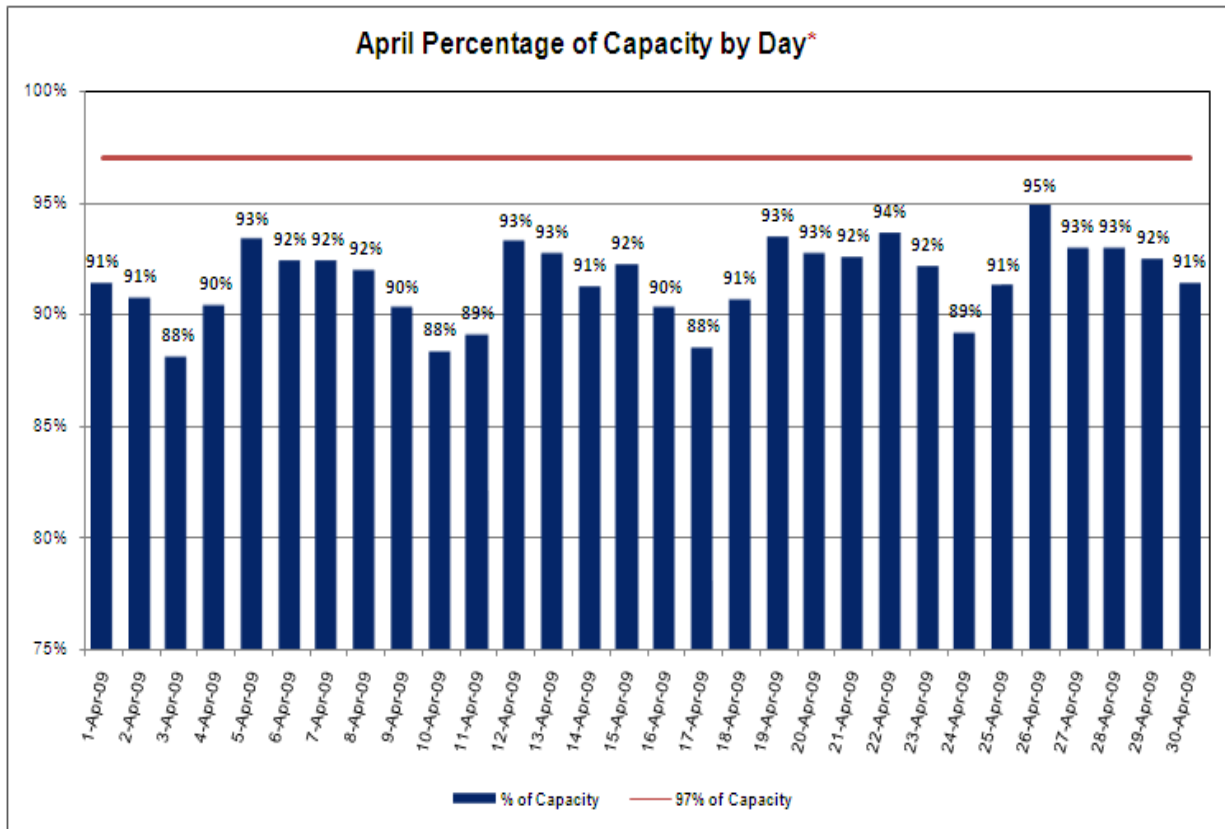


Average Length of Stay (in days)

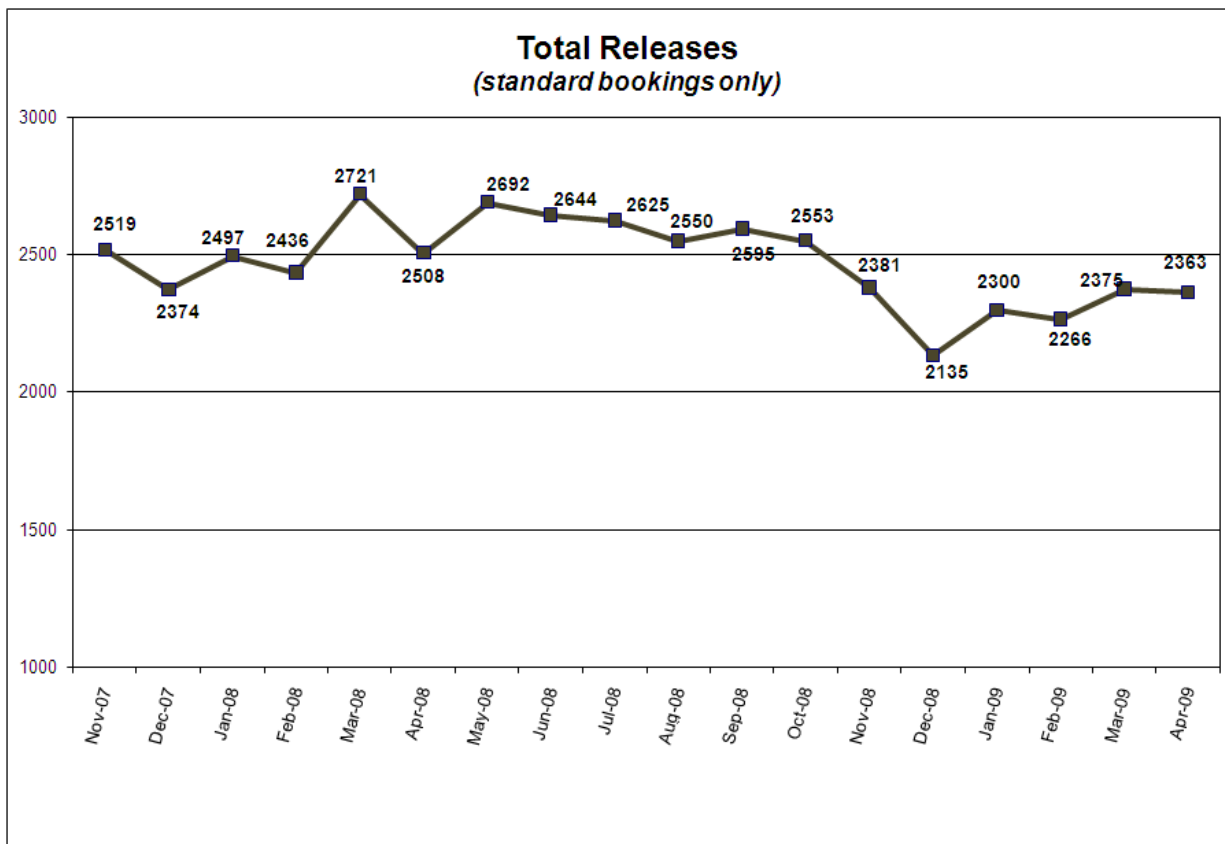


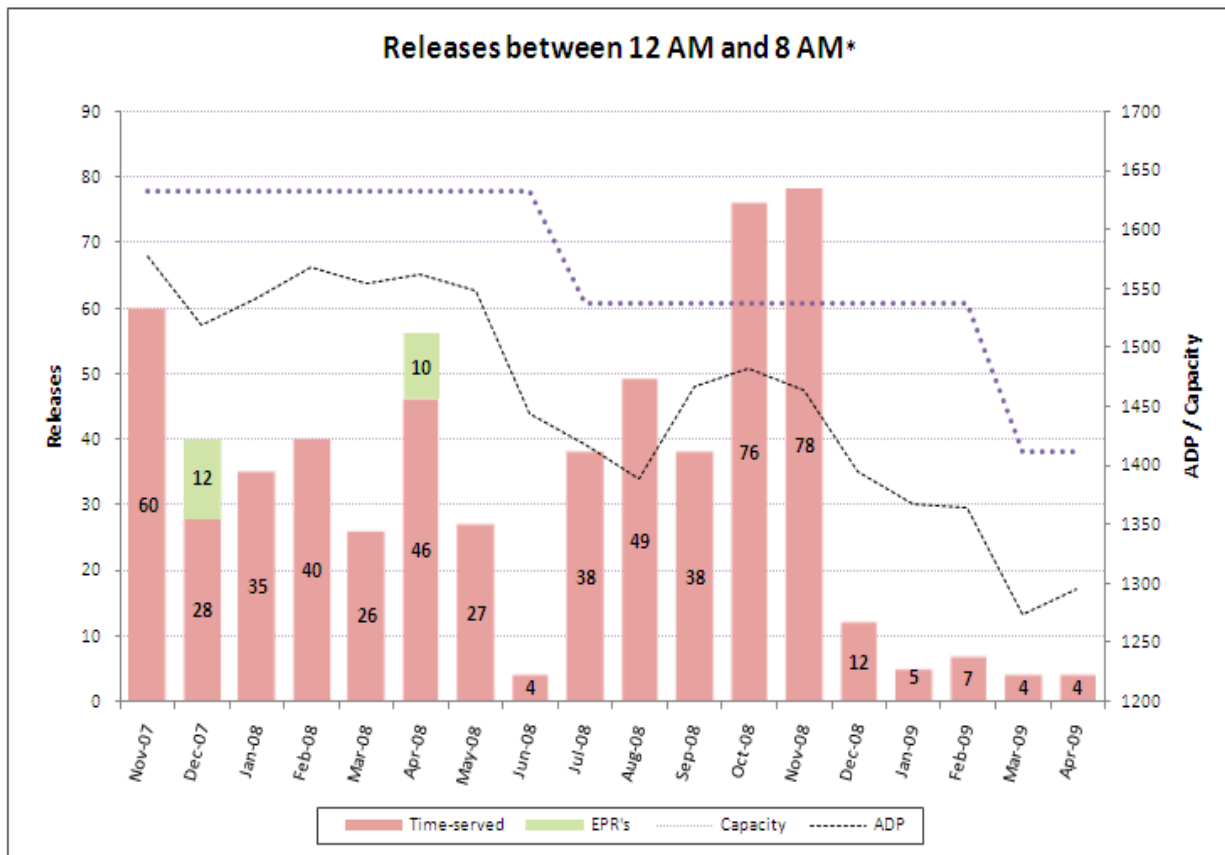
Average Daily Population



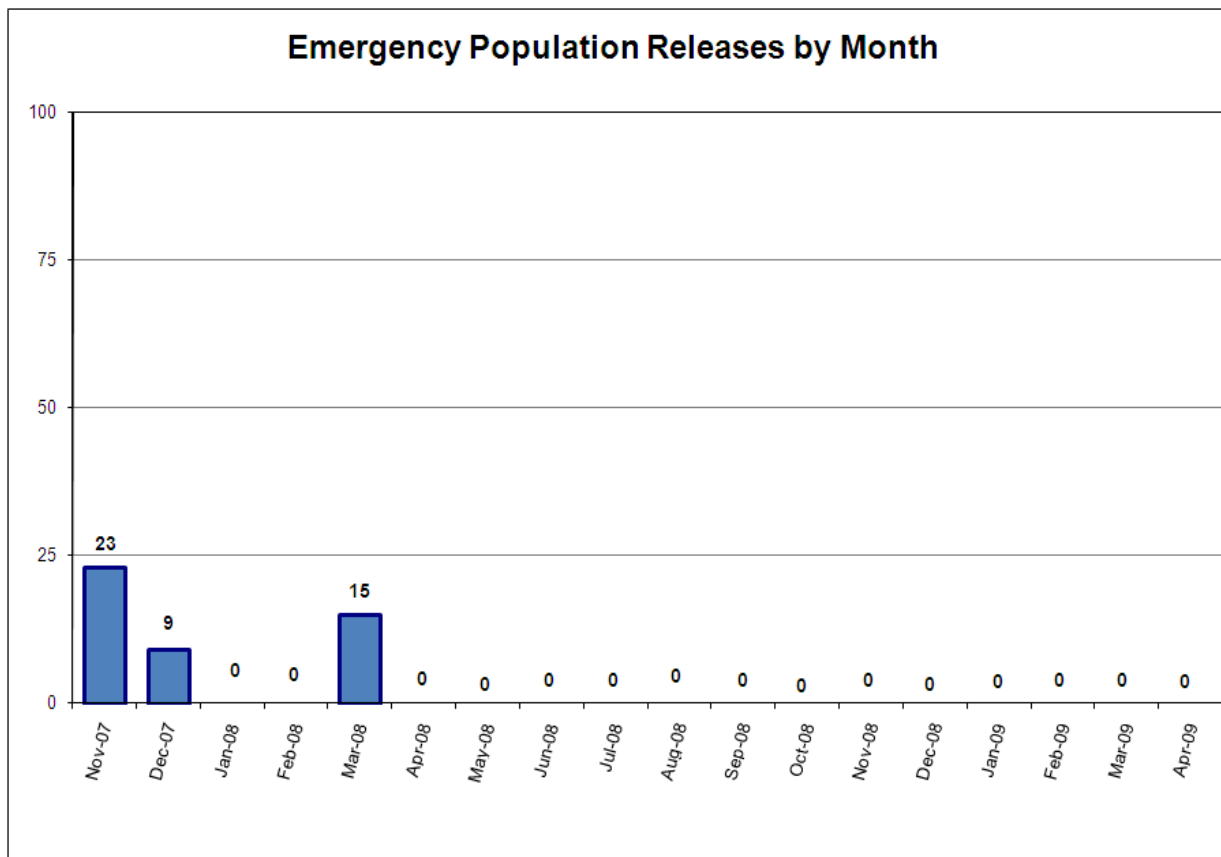


*Red bars indicate days on which EPRs occurred, if any. Note that EPRs do not always or only occur when capacity exceeds the 97% threshold. Efforts are made to balance the population to the demands of the classification system for specific types of jail beds and balance the space needs for male or female inmates. Additionally, jail capacity varies throughout the day, with these capacity calculations based on 10PM population counts. Total inmate capacity was reduced from 1539 to 1413 on March 8.

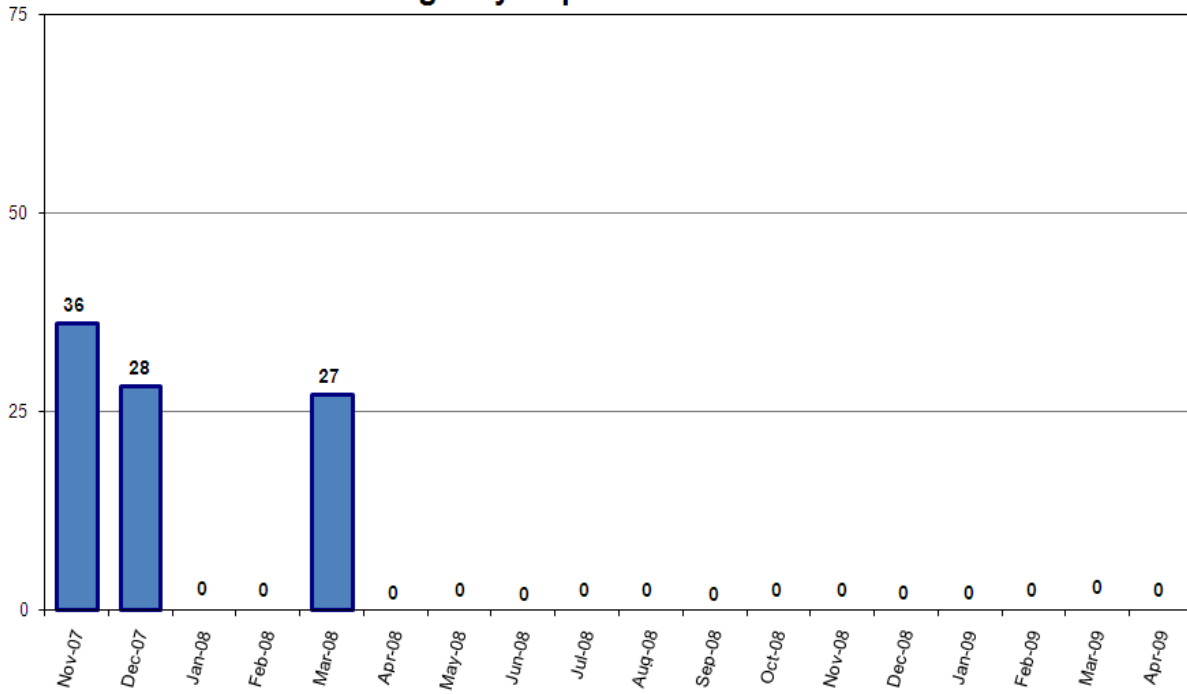




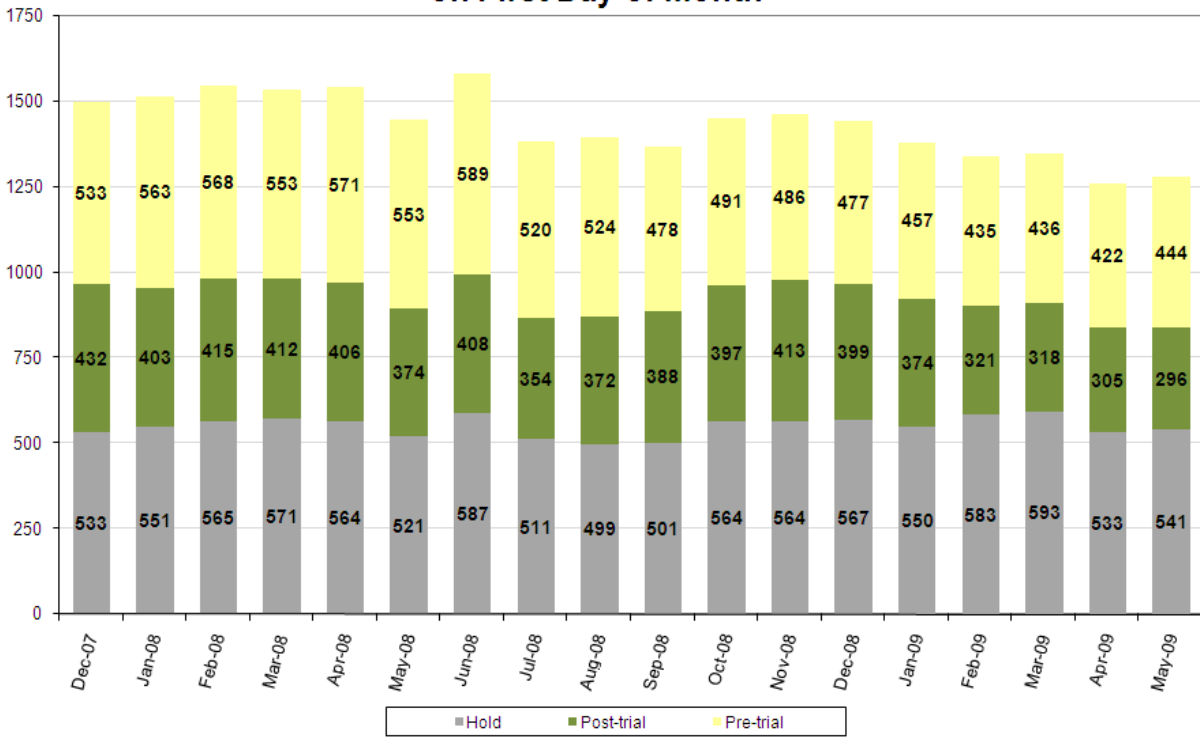
*Court-ordered and recognizance releases not included.



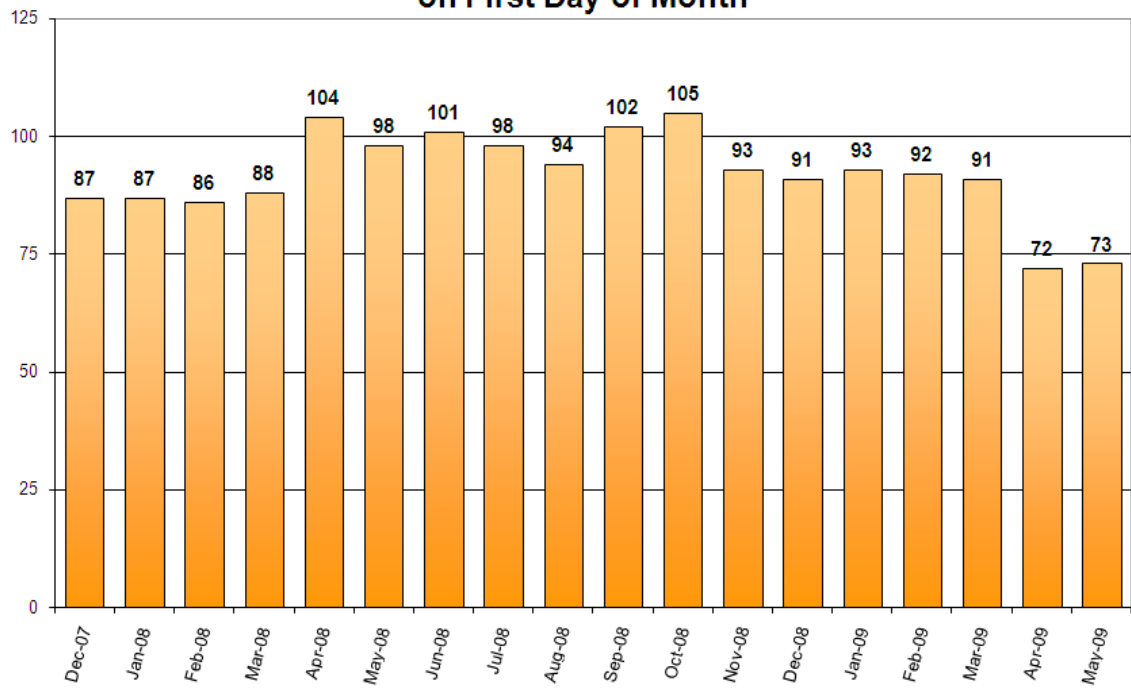
Monthly Average Score of Emergency Population Releases



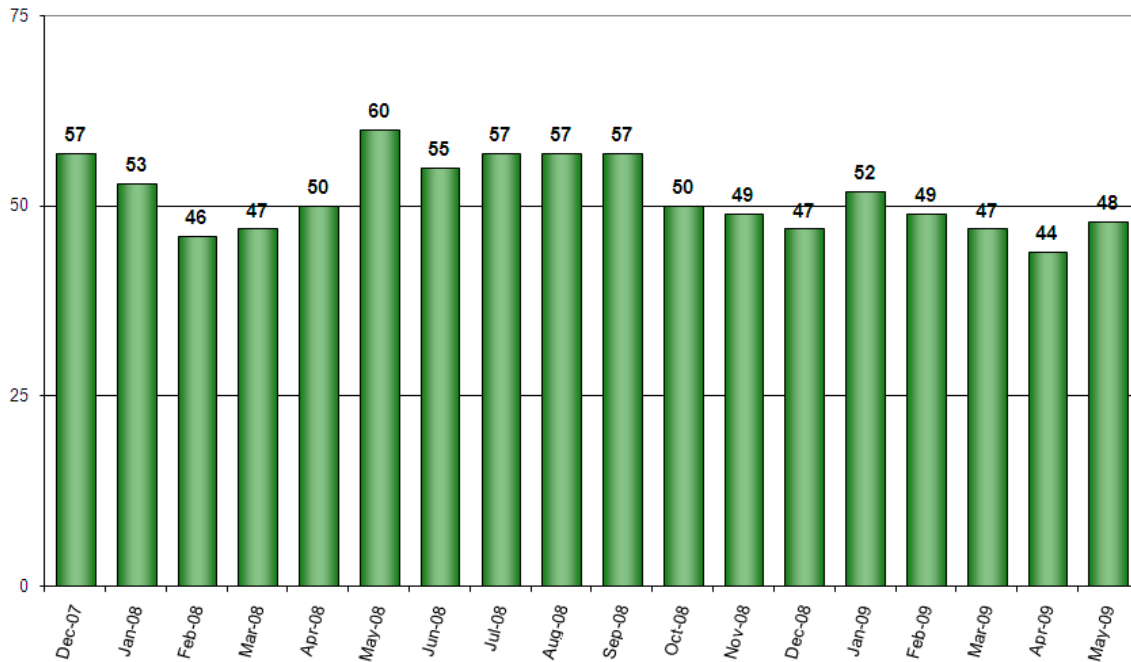
Pre-Trial vs. Post-Trial vs. Holds in Custody on First Day of Month



Count of Persons Held Pre-trial more than 150 Days on First Day of Month



Count of Persons Held Pre-trial on Murder Related Charges on First Day of Month



Count of Pre-trial persons with Murder Related Charges by Length of Stay on First Day of Month

