

Multnomah County Sheriff's Office

**Monthly Jail Statistics Report
May 2009**

JUNE 16, 2009



**Bob Skipper
SHERIFF**

**503 988-4300 PHONE
503 988-4500 TTY**

www.mcso.us/public/

501 SE HAWTHORNE BLVD., Suite 350 • Portland, OR 97214

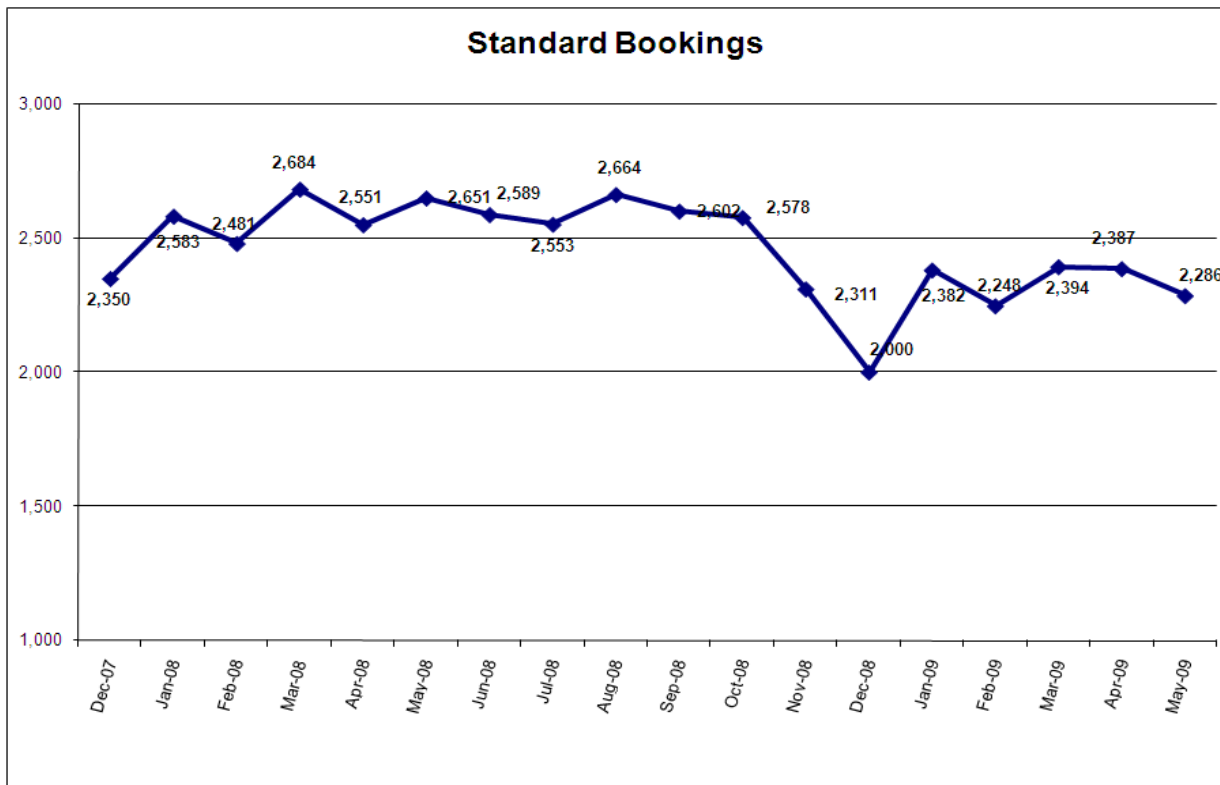
Multnomah County Monthly Jail Statistics May 2009

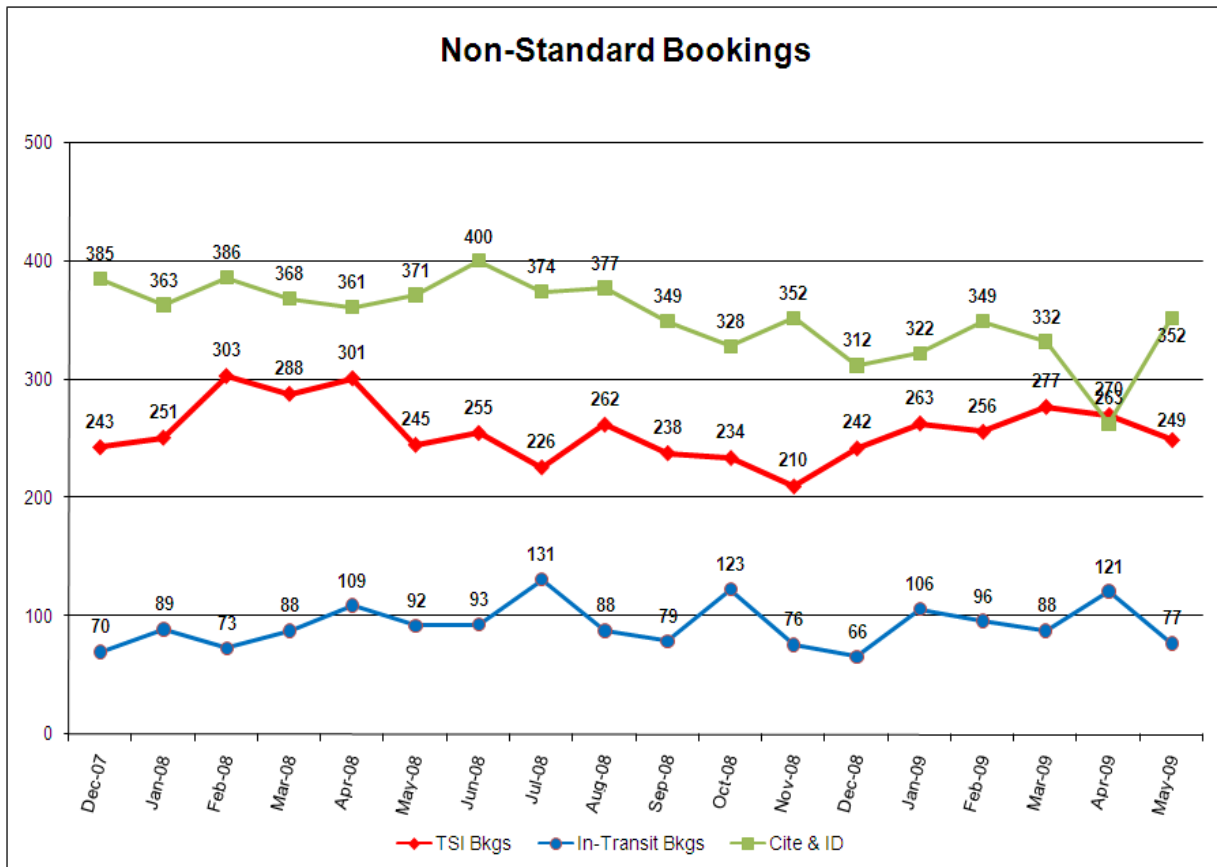
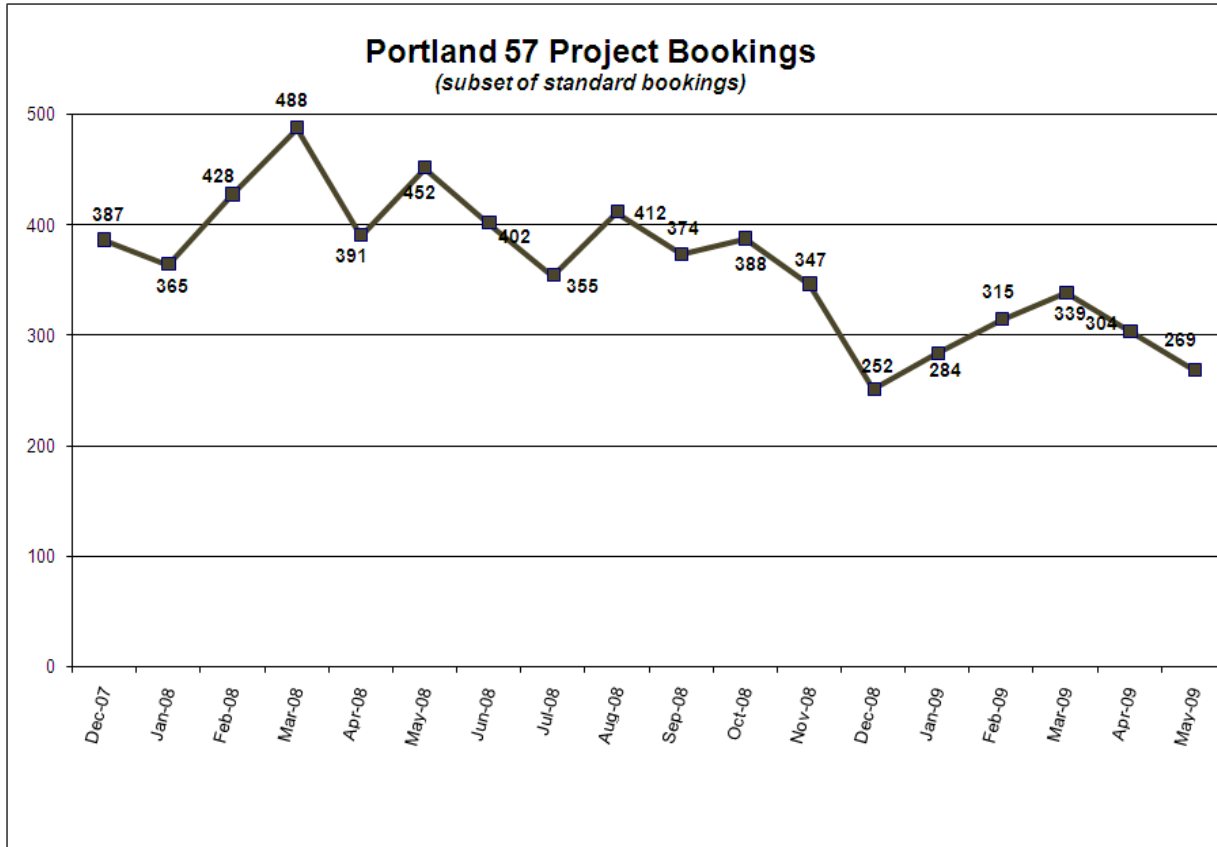
There were 2286 standard bookings in May, about 100 fewer than in April. Project 57 bookings declined for a second month in a row to 269, as did turn-self-in (TSI) bookings (249). In-transit bookings fell to just 77, while Cite & ID bookings rebounded to 352 in May after dropping to fewer than 300 last month.

Average length of stay (ALS) dropped sharply to just under 15 days in May, after hovering around 17 days for the previous three months. Average daily population (ADP) remained almost unchanged over April at 1292 inmates. Most days in May saw a count of US Marshal inmates at 160 or greater.

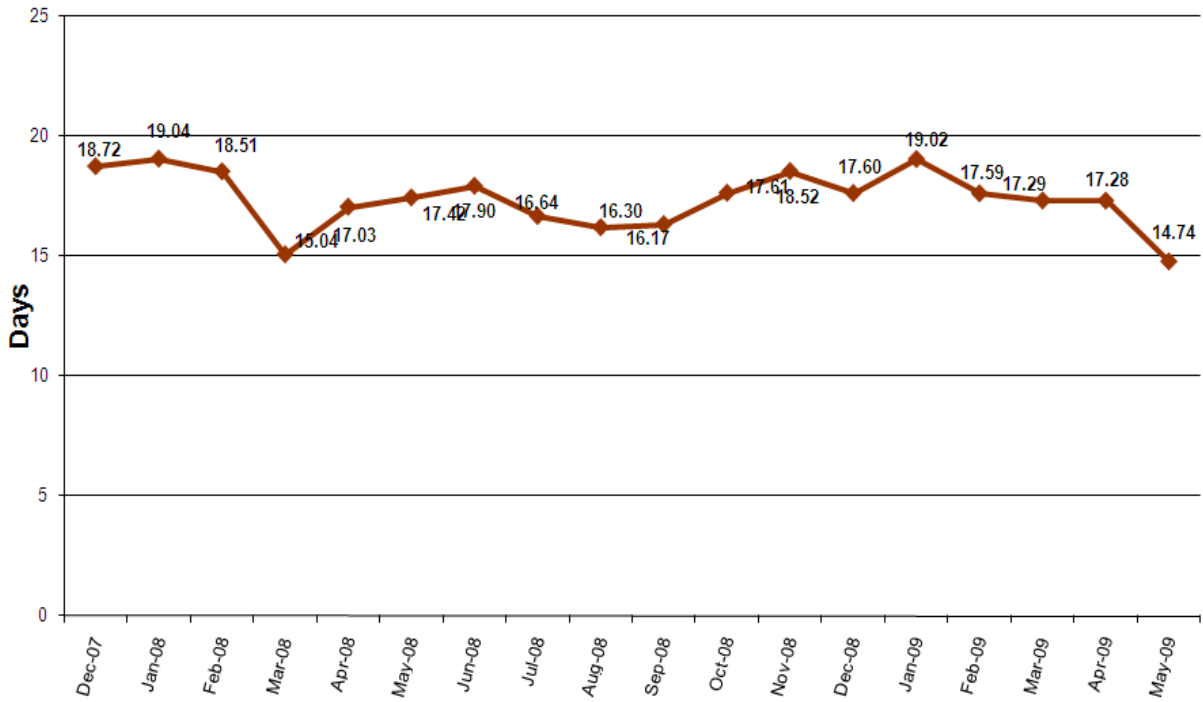
Total releases numbered 2232 in May, over 100 less than in April. Recognizance releases increased from 533 in April to 585 in May, but in proportion to capacity, recognizance releases have seen an increase of more than 12% since December 2008. Only 8 time-served offenders were released between 12 AM and 8 AM in May, the time of day when access to public transportation and social services is most limited. There were no emergency population releases (EPRs) in May, and the jail did not go into emergency release status on any day during the month.

Since the end of 2008, the number of inmates jailed pre-trial, post-trial, and on holds have all decreased along with funded jail capacity. However, this decrease has been sharpest among post-trial inmates whose numbers have declined from over 400 on November 1st, 2008 to just 294 on June 1st, 2009, a reduction of just over one-quarter. Inmates jailed pre-trial more than 150 days stood at 71 on June 1st. Inmates jailed pre-trial on murder charges numbered 52, with one accused murderer reaching the five-year mark.

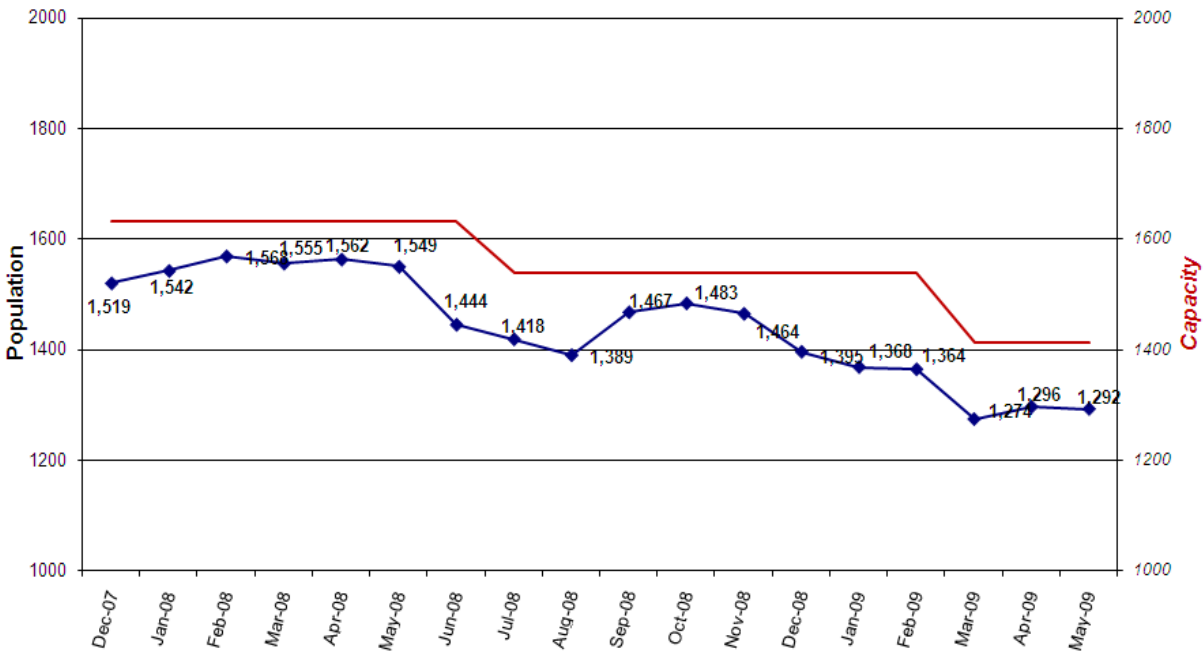




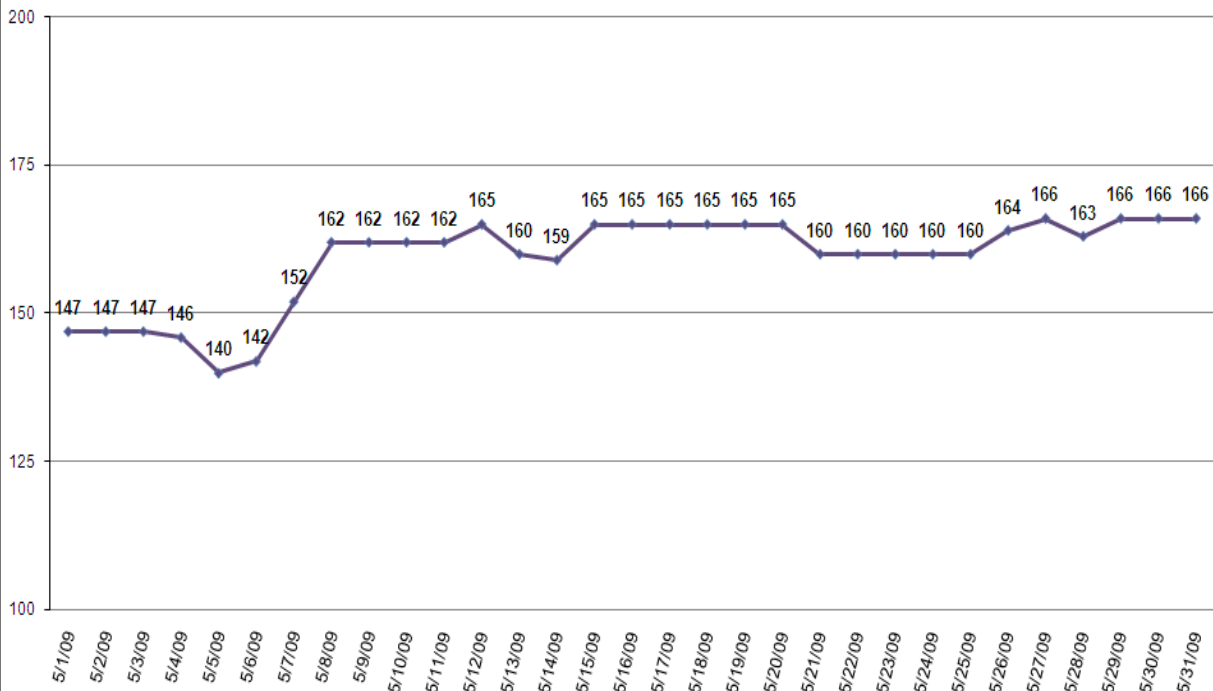
Average Length of Stay (in days)



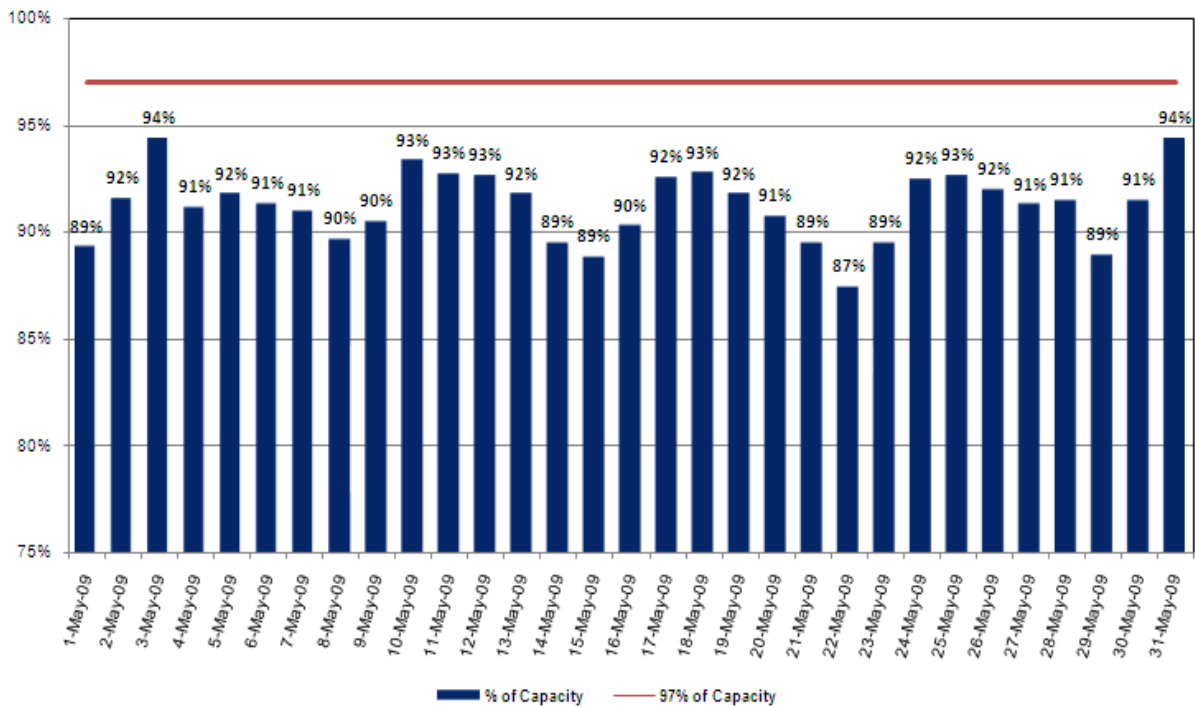
Average Daily Population



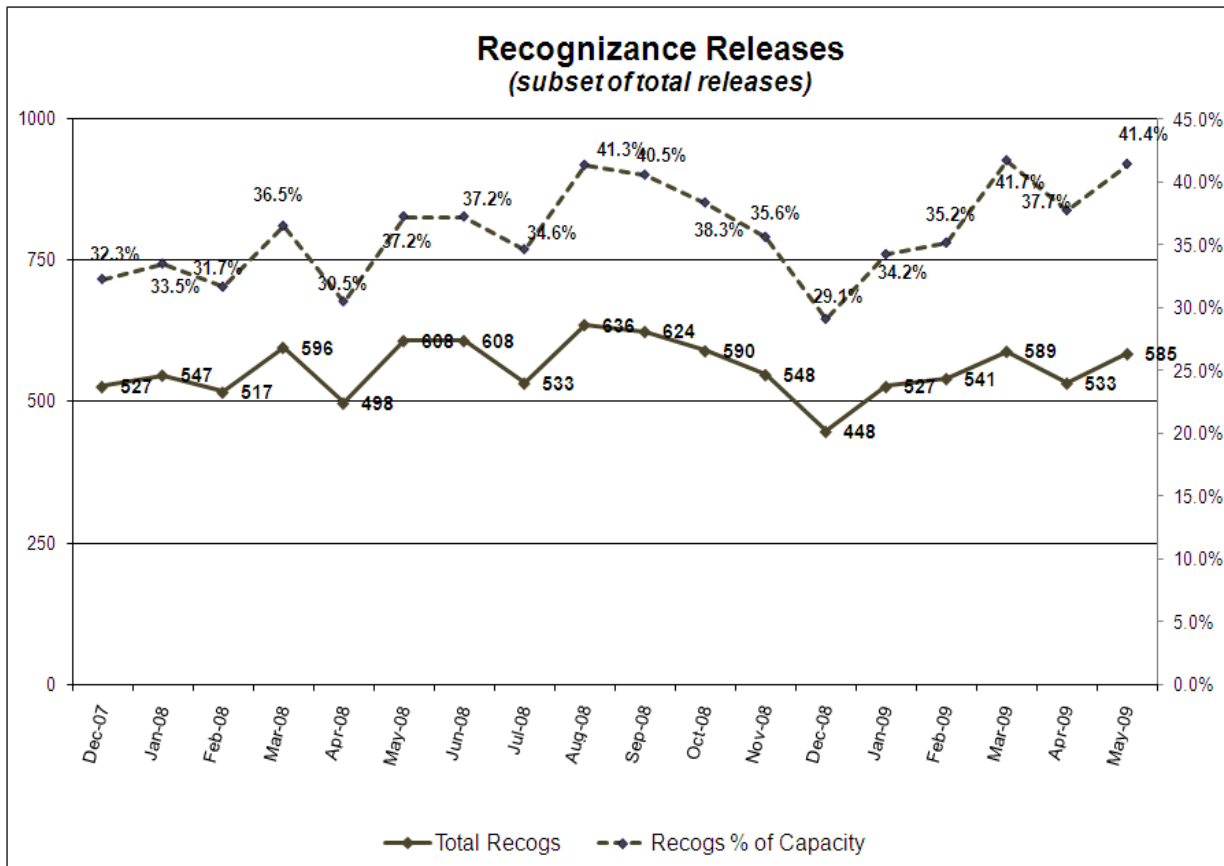
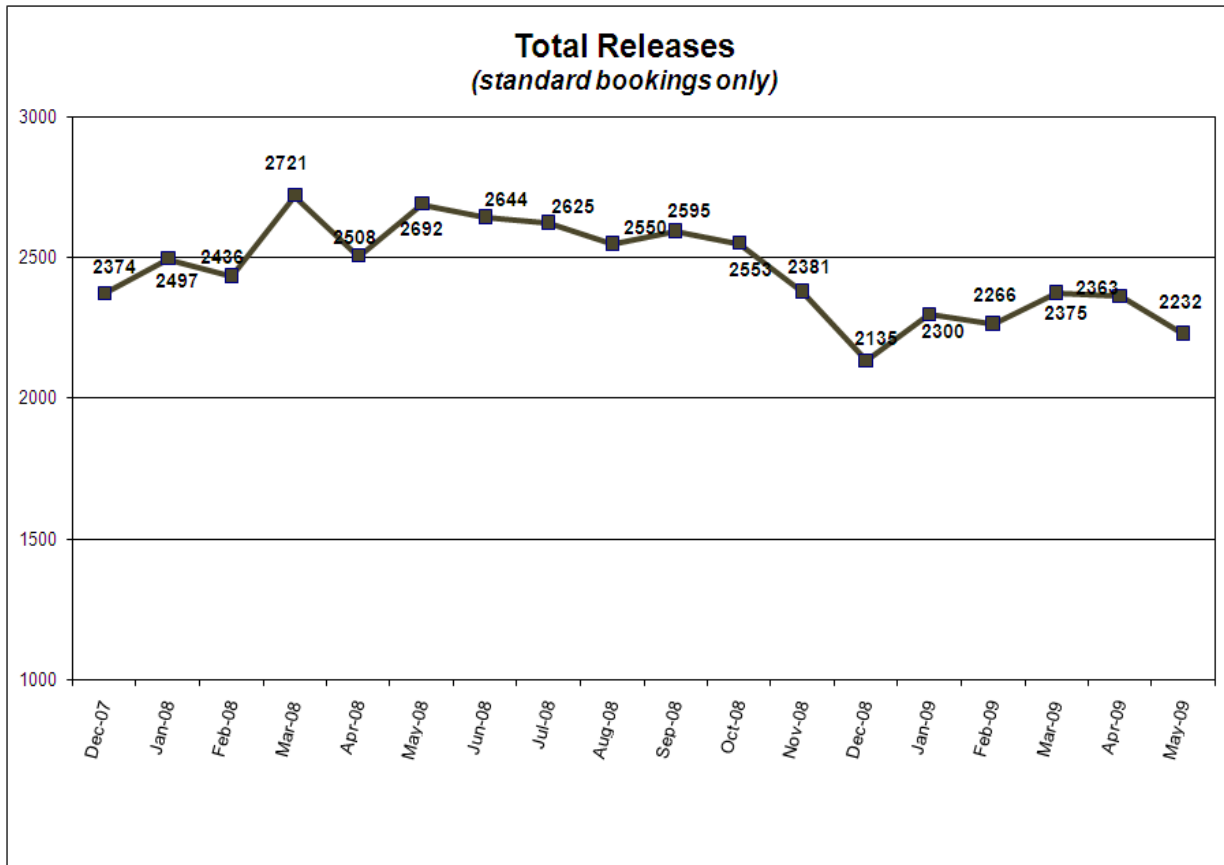
Daily Count of Exclusive U.S. Marshal Inmates

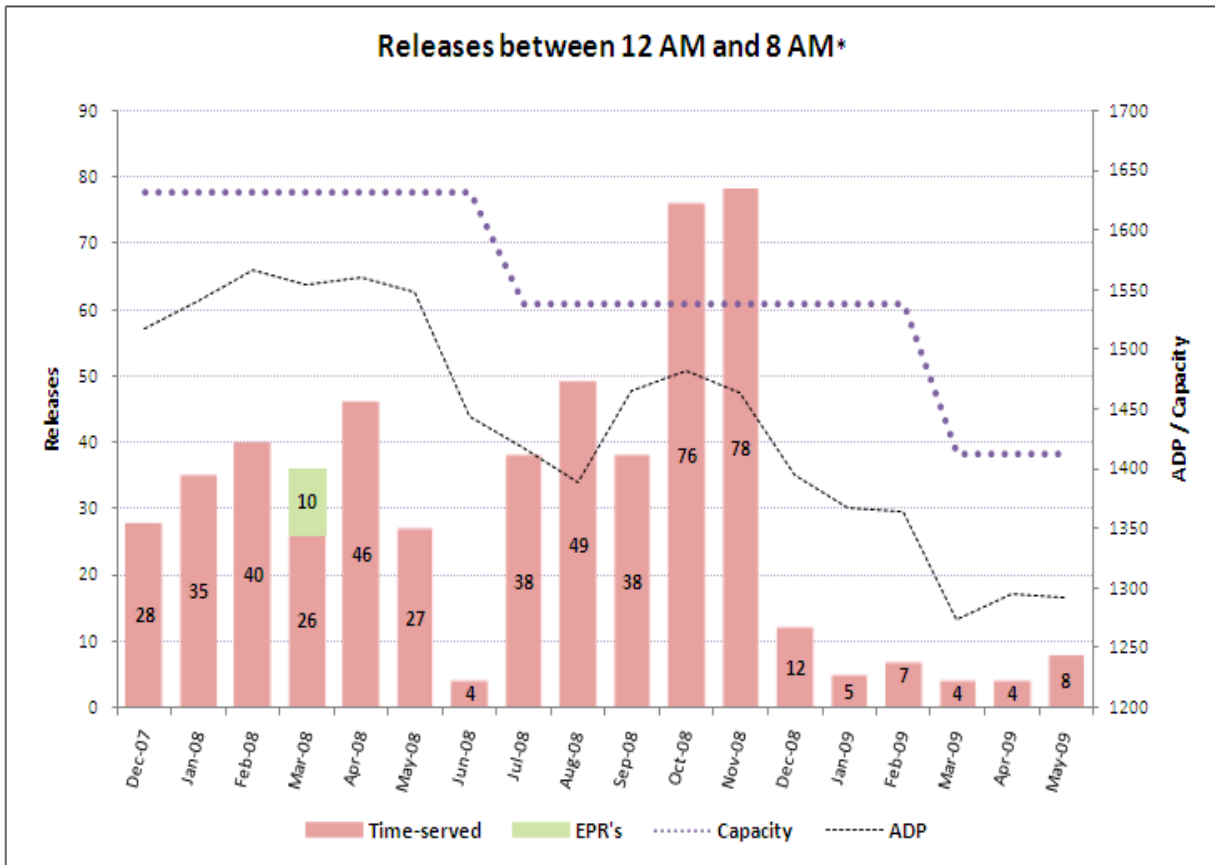


Percentage of Capacity by Day*

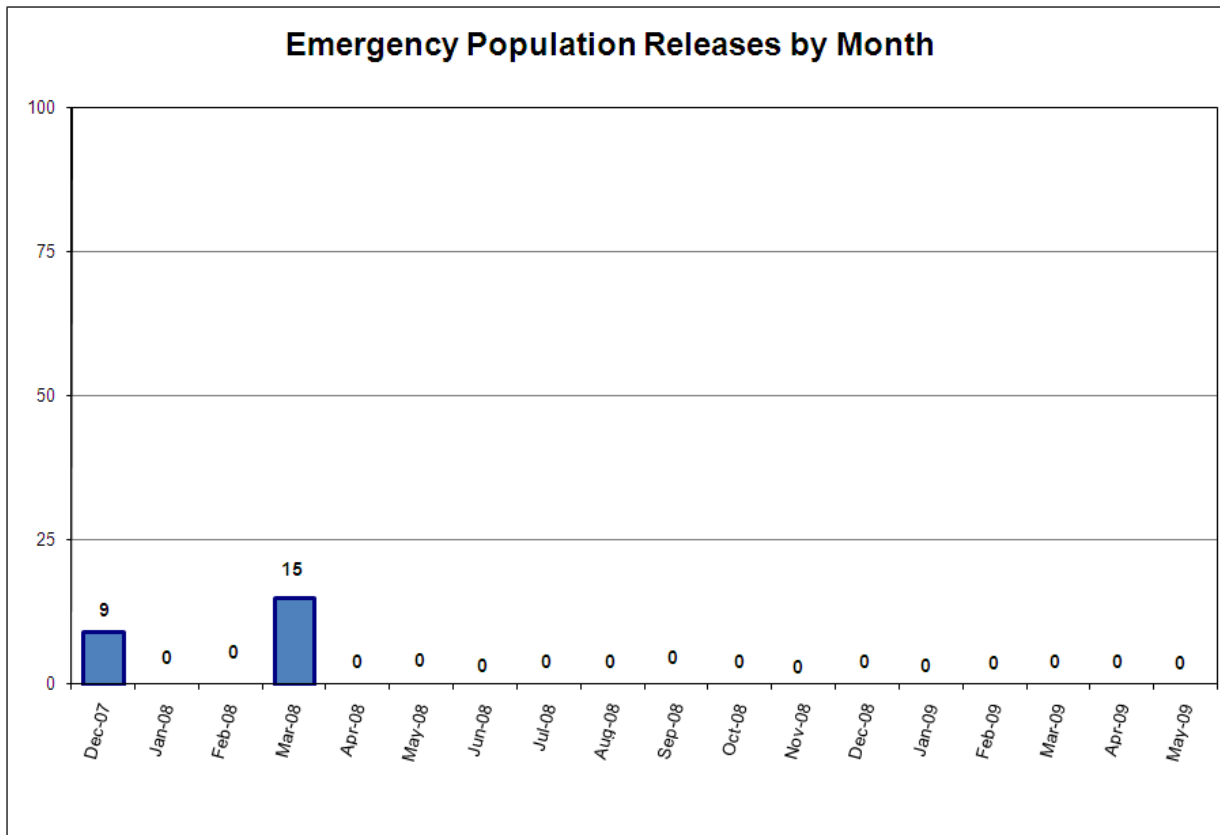


*Red bars indicate days on which EPRs occurred, if any. Note that EPRs do not always or only occur when capacity exceeds the 97% threshold. Efforts are made to balance the population to the demands of the classification system for specific types of jail beds and balance the space needs for male or female inmates. Additionally, jail capacity varies throughout the day, with these capacity calculations based on 10PM population counts.

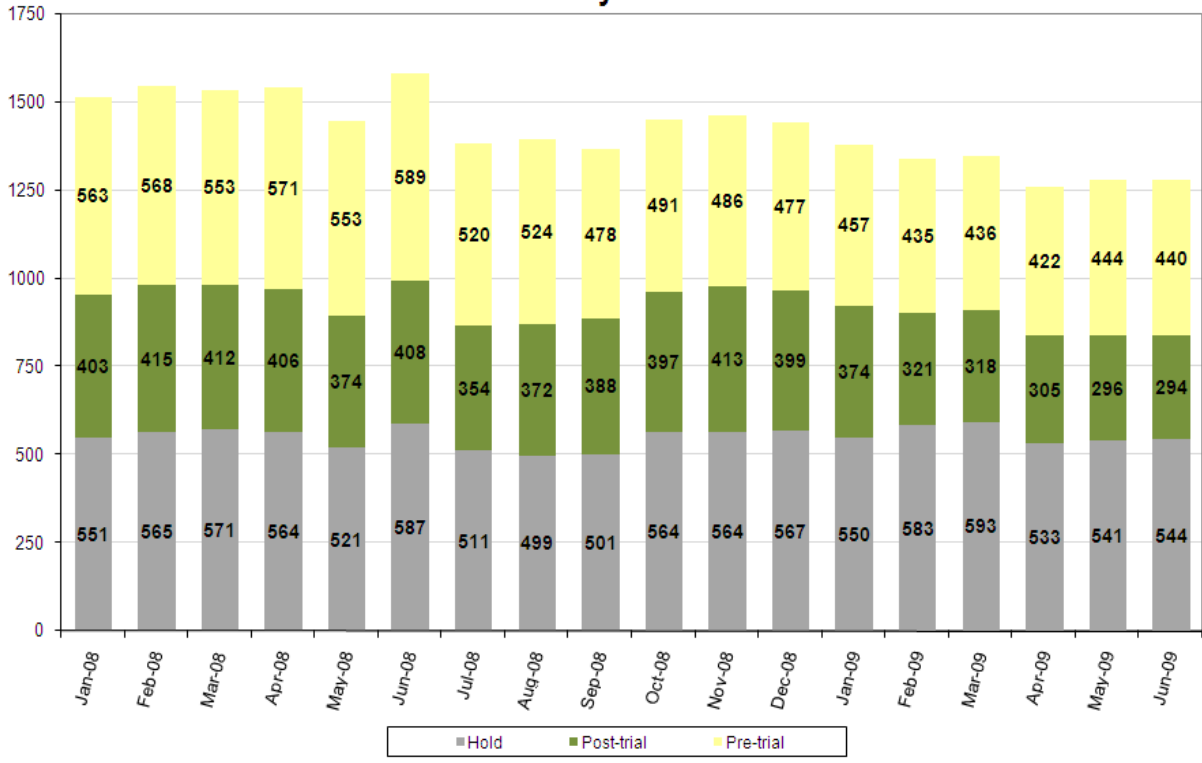




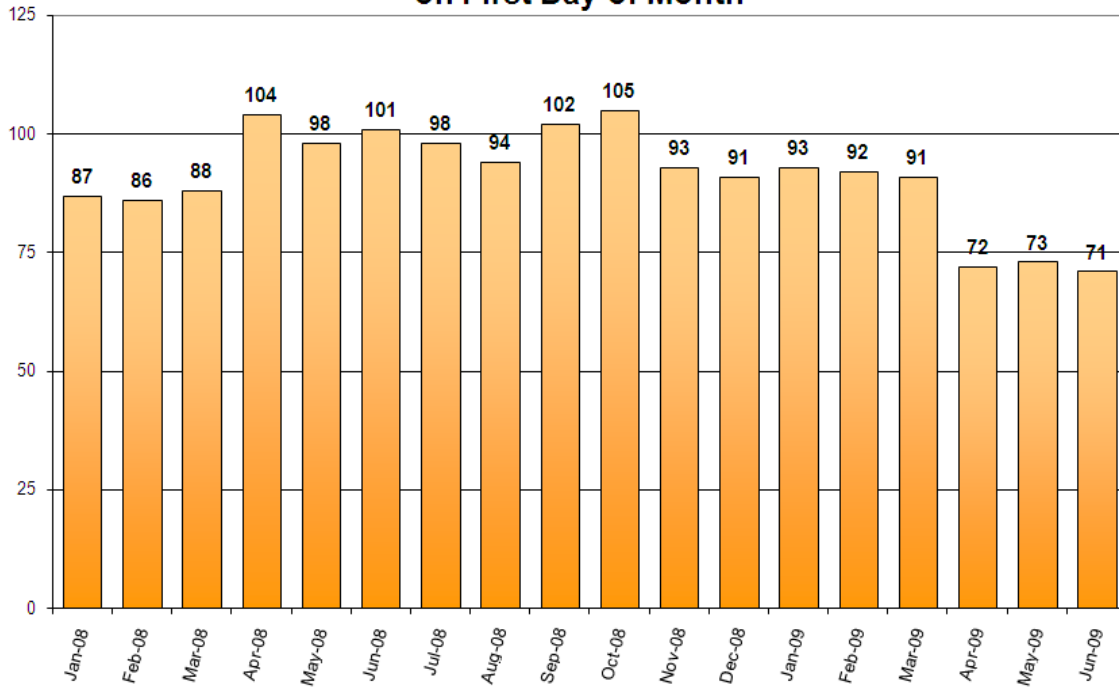
*Court-ordered and recognizance releases not included.



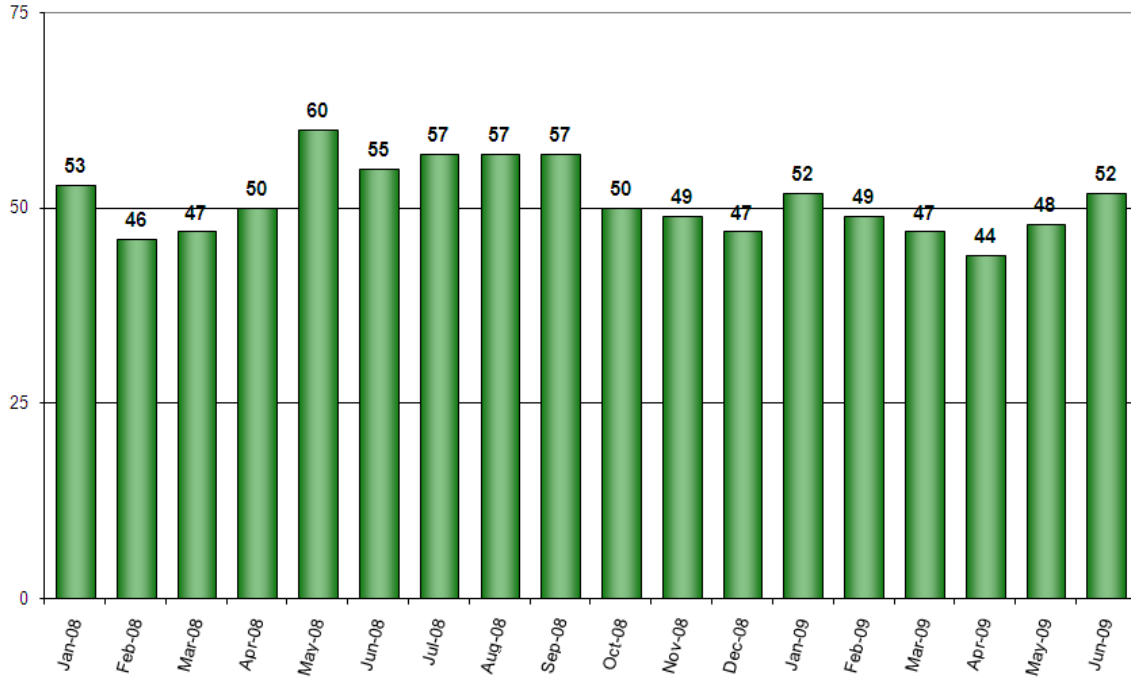
Pre-Trial vs. Post-Trial vs. Holds in Custody on First Day of Month



Count of Persons Held Pre-trial more than 150 Days on First Day of Month



Count of Persons Held Pre-trial on Murder Related Charges on First Day of Month



Count of Pre-trial persons with Murder Related Charges by Length of Stay on First Day of Month

