

Multnomah County Sheriff's Office

**Monthly Jail Statistics Report
September 2008**

OCTOBER 14, 2008



**Robert Skipper
SHERIFF**

**503 988-4300 PHONE
503 988-4500 TTY**

www.mcso.us/public/

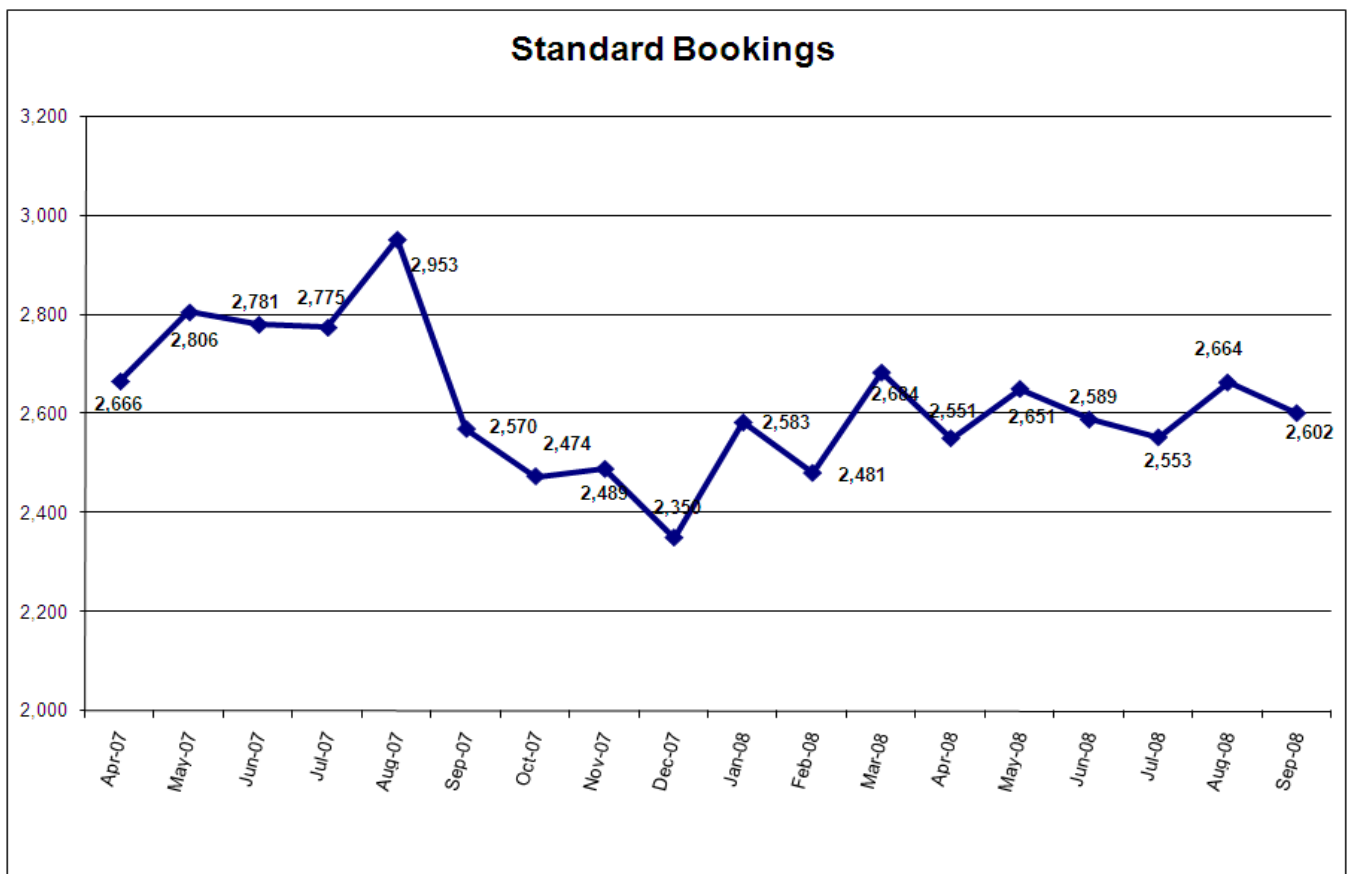
501 SE HAWTHORNE BLVD., Suite 350 • Portland, OR 97214

Multnomah County Monthly Jail Statistics September 2008

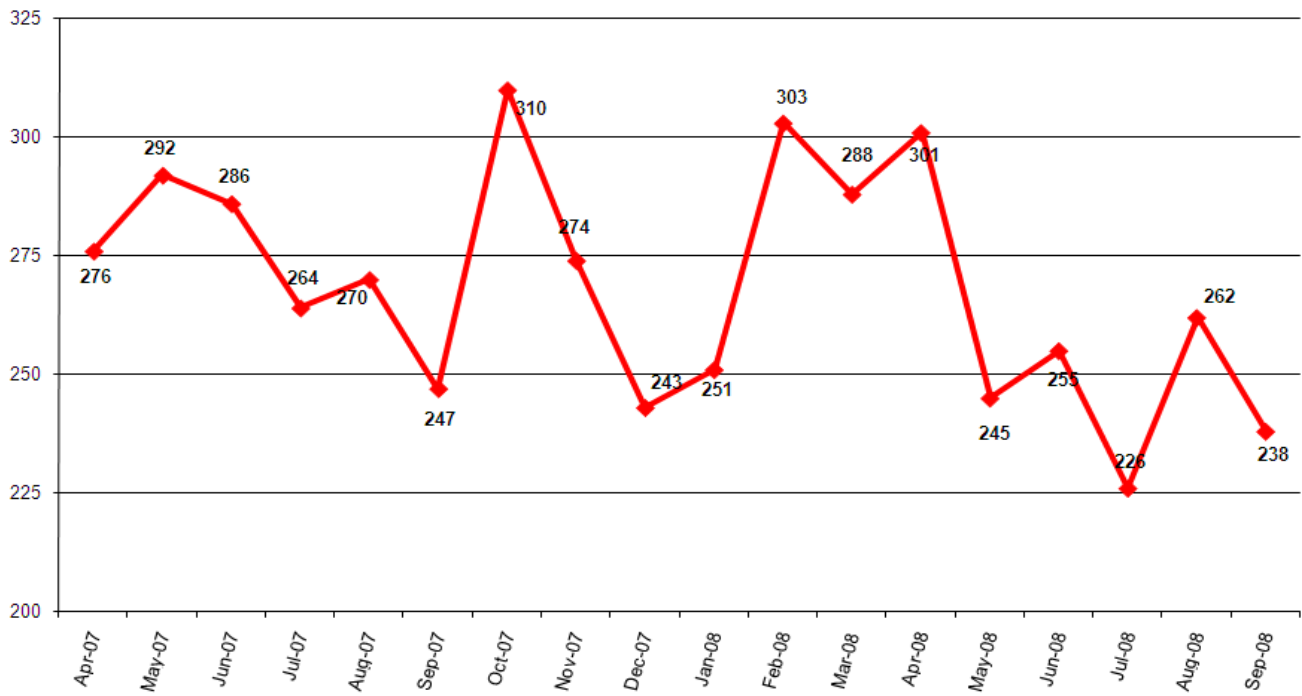
There were 2602 standard bookings in September, down just slightly from August but comparable to the previous several months. TSI, Cite & ID, and Portland Project 57 bookings also dipped moderately over August.

Average length of stay (ALS) was 16.3 days in September, very similar to July and August. Average daily population (ADP) rose to 1467, its highest level in three months. Though there were no emergency population releases (EPRs) in September, the jail did go into emergency release status on 10 days during the month, operating at 97% of capacity or higher. The number of time-served offenders released between 12 AM and 8 AM, the time of day during which access to public transportation and social services is most limited, remained at less than 50.

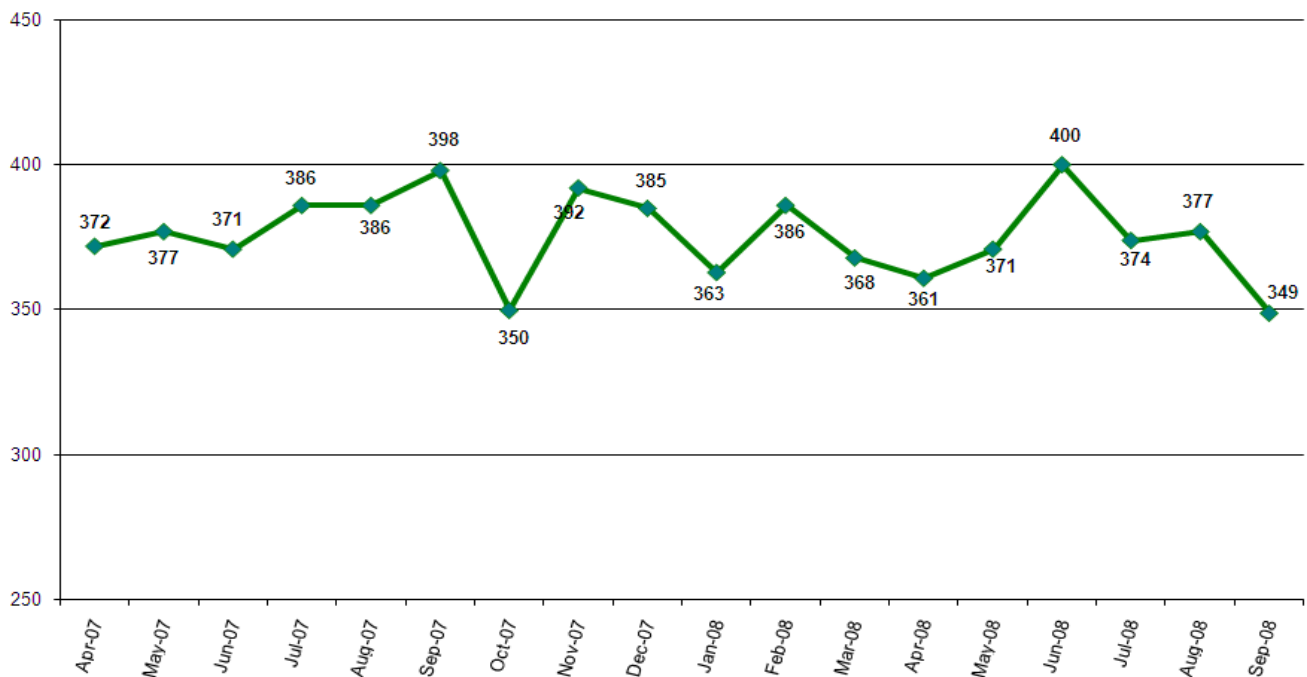
The number of inmates jailed pre-trial, post-trial and for holds all increased slightly from September first to October first. The count of inmates held pre-trial more than 150 days totaled 105, three more than on September one. Inmates held pre-trial on murder-related charges dropped to 50, with one inmate held for over five years and 3 held more than two years.



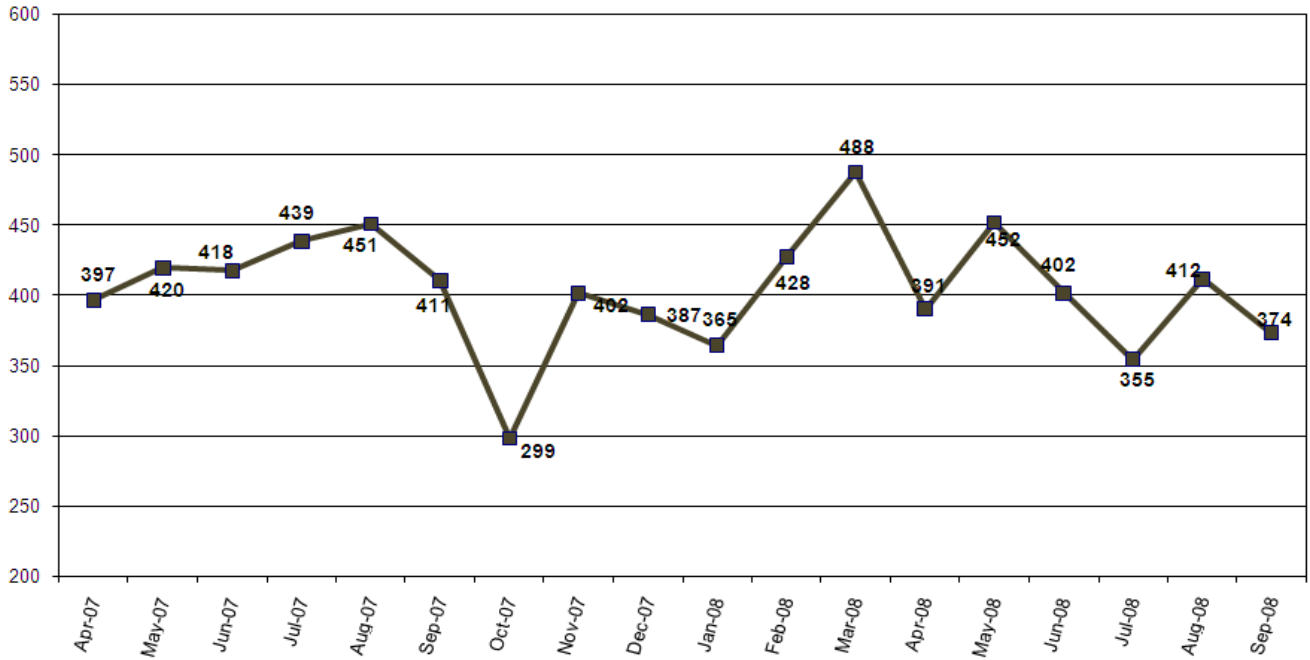
Turn-Self-In (TSI) Bookings



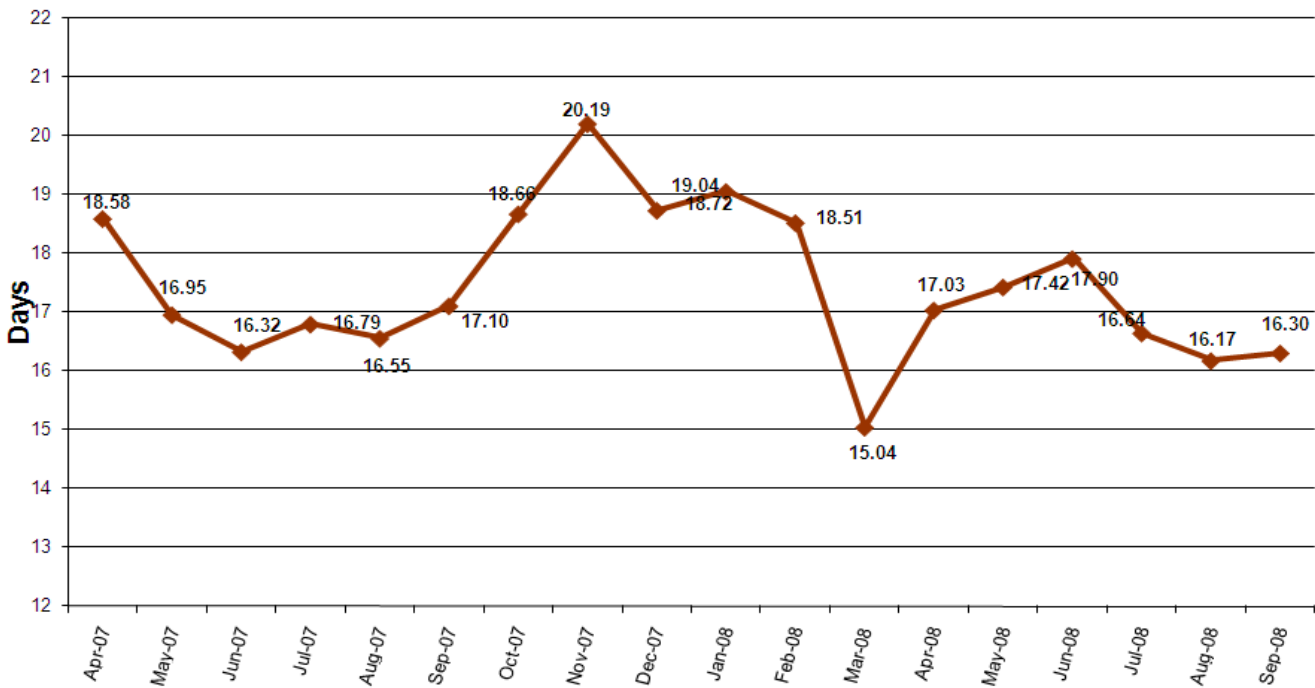
Cite & ID Bookings

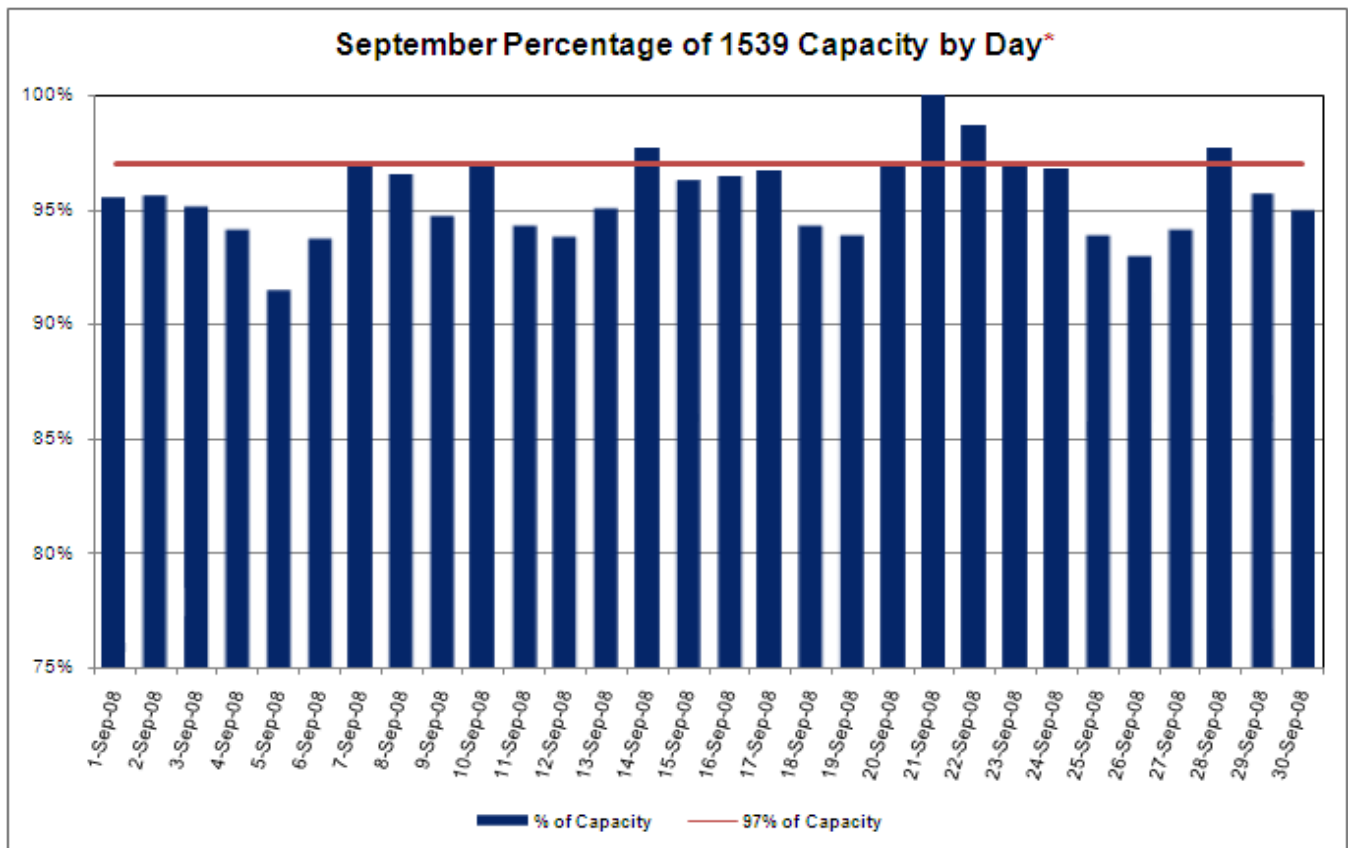
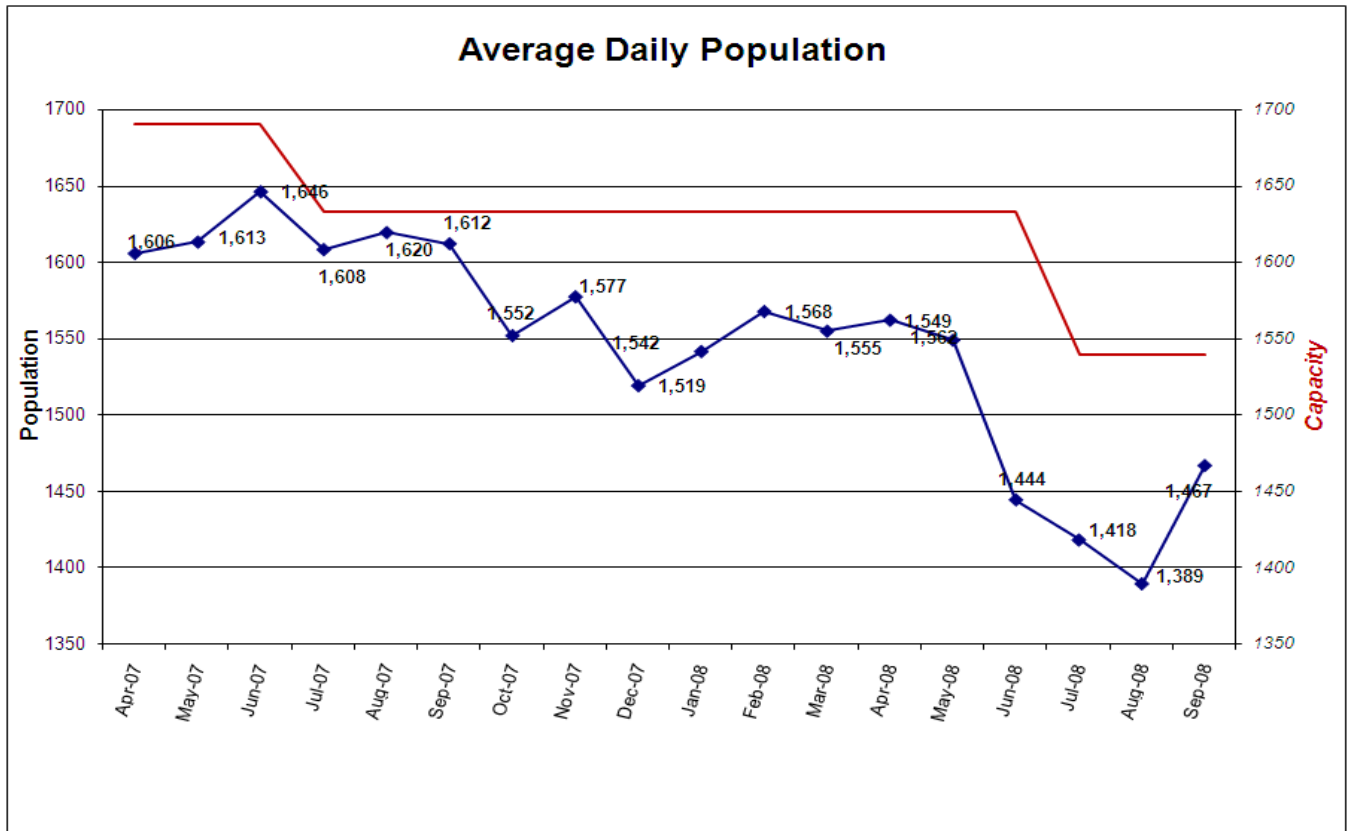


Portland 57 Project - Total Bookings by Month



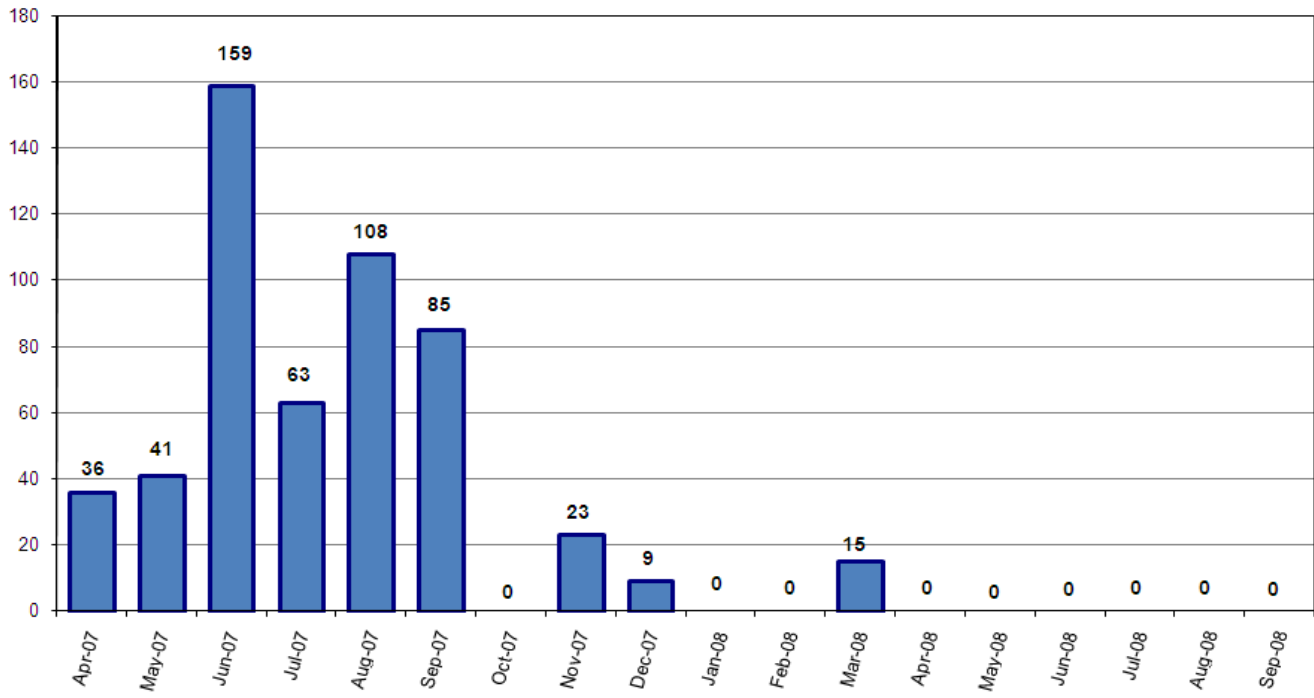
Average Length of Stay (in days)



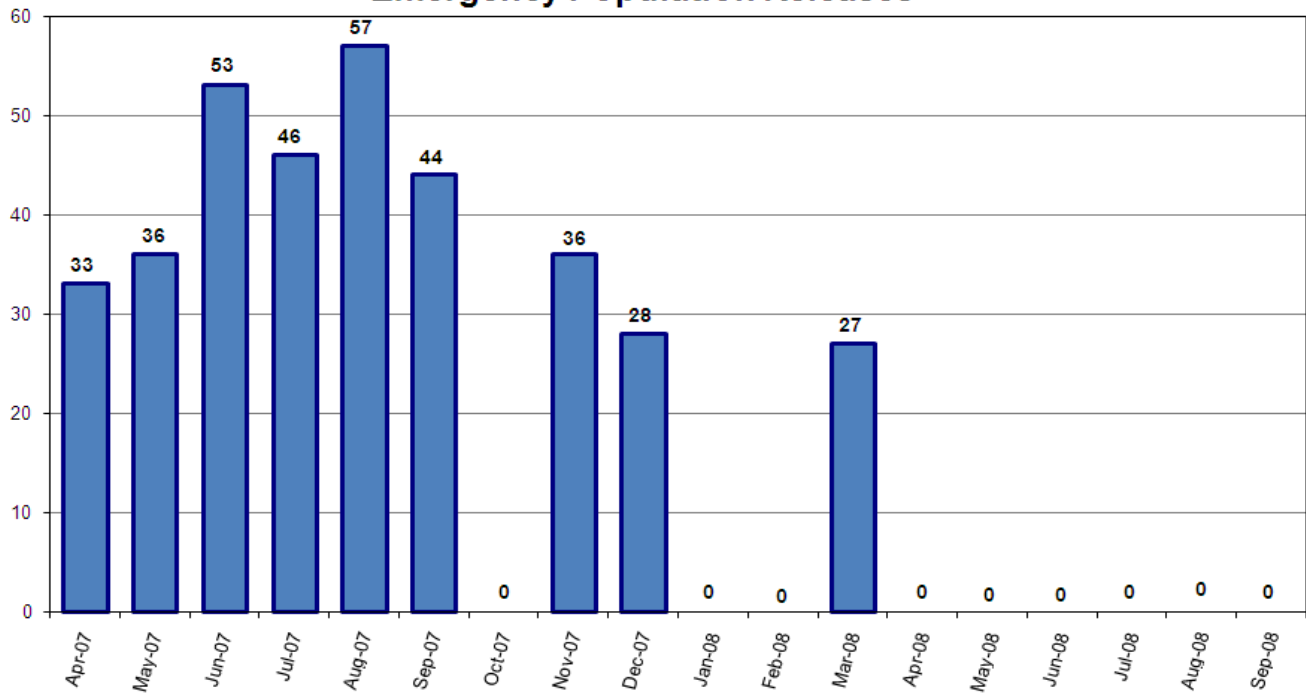


*Red bars indicate days on which EPRs occurred, if any. Note that EPRs do not always or only occur when capacity exceeds the 97% threshold. Efforts are made to balance the population to the demands of the classification system for specific types of jail beds and balance the space needs for male or female inmates. Additionally, jail capacity varies throughout the day, with these capacity calculations based on 10PM population counts.

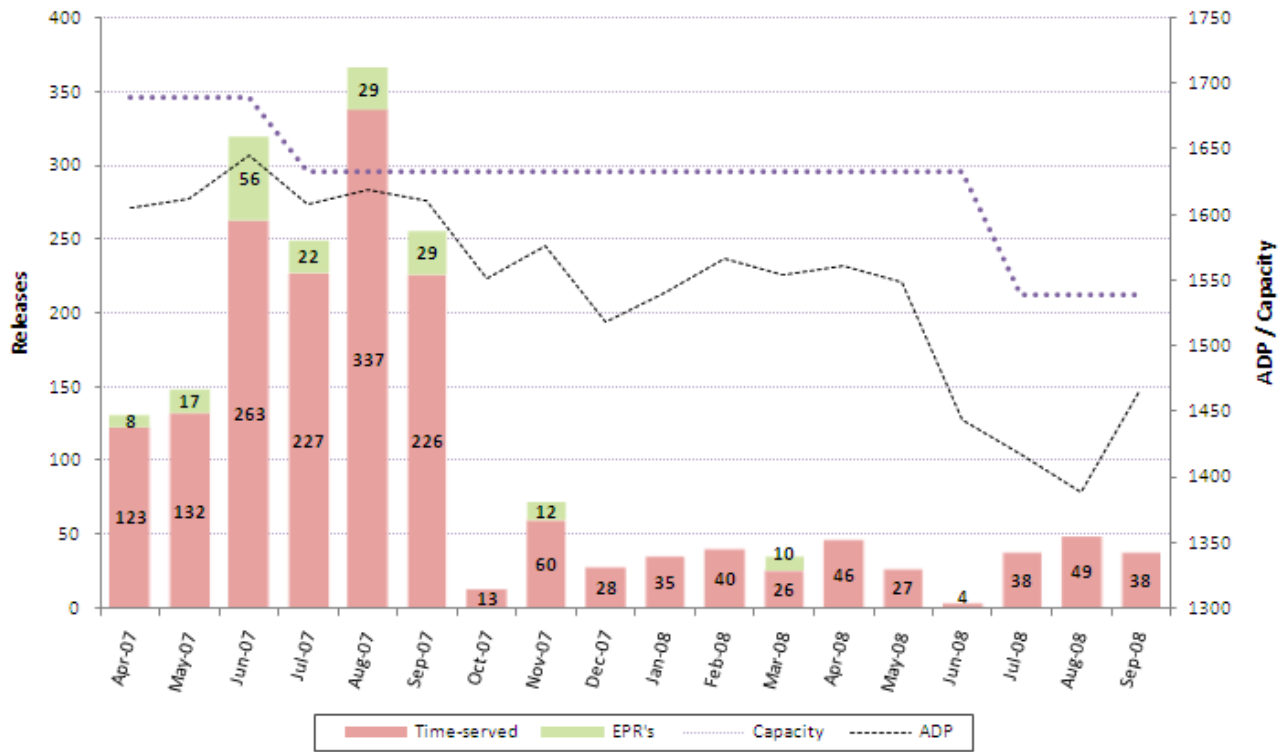
Emergency Population Releases by Month



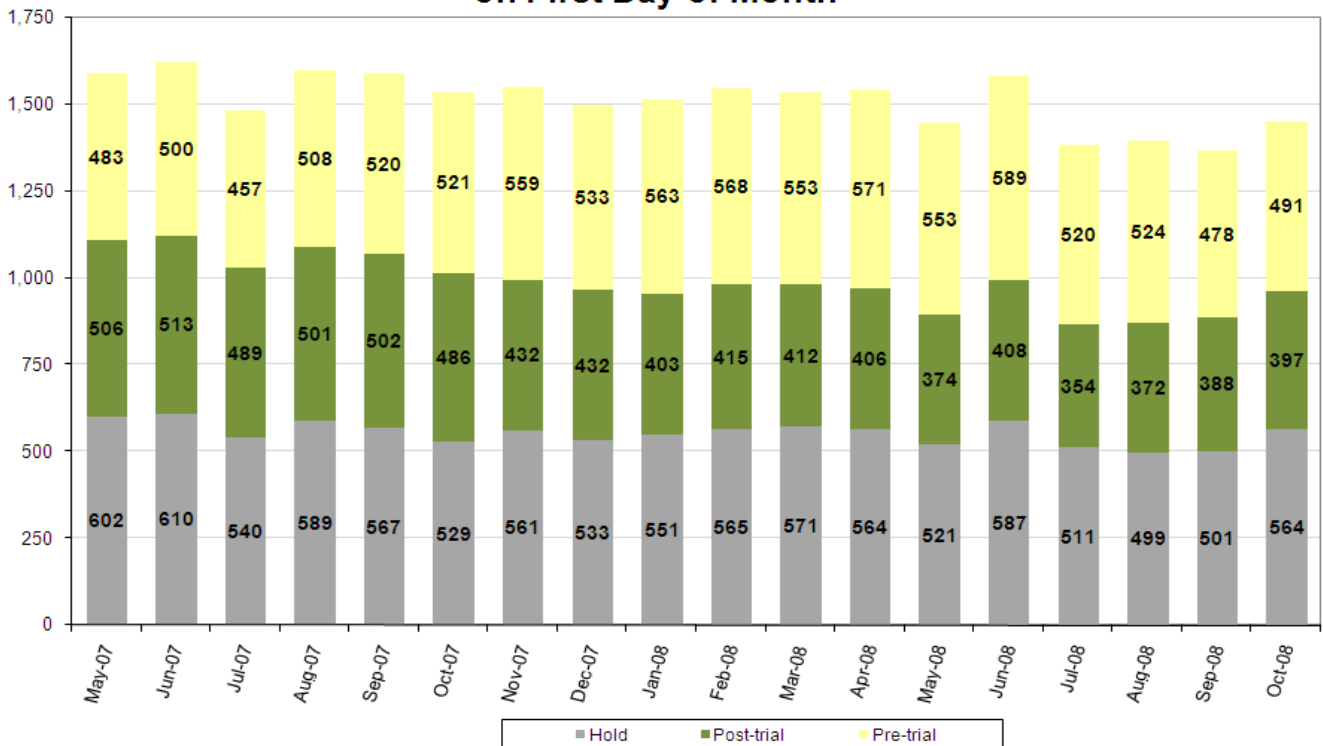
Monthly Average Score of Emergency Population Releases



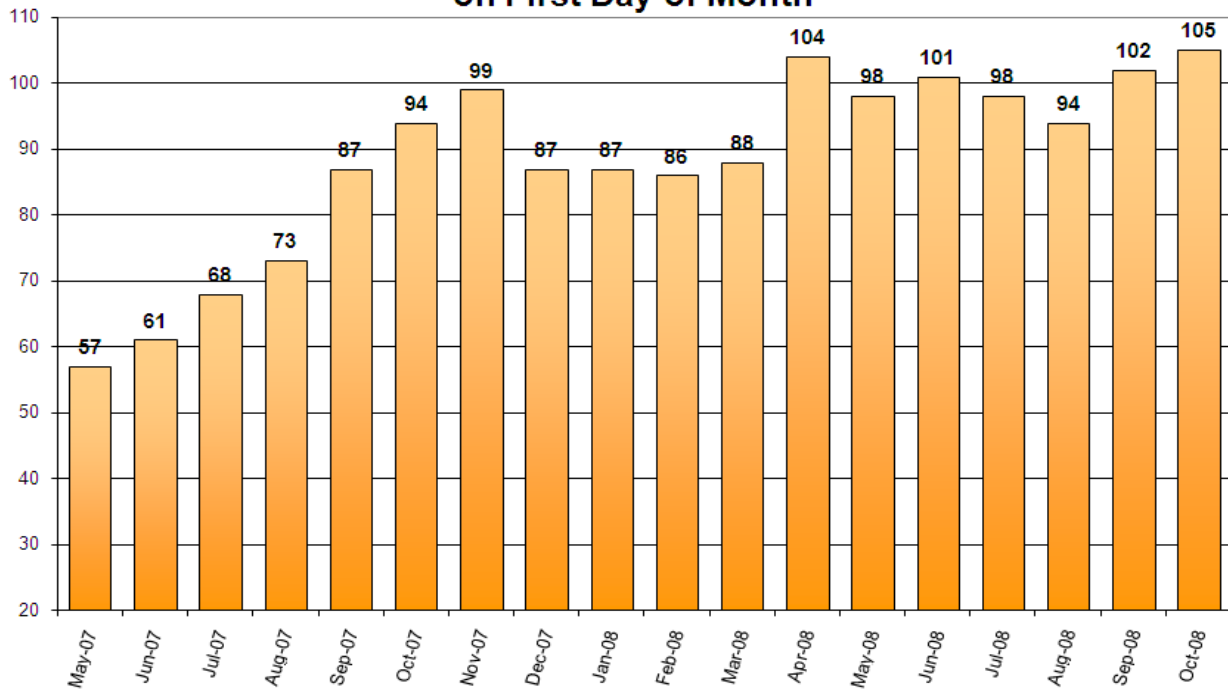
Releases between 12 AM and 8 AM



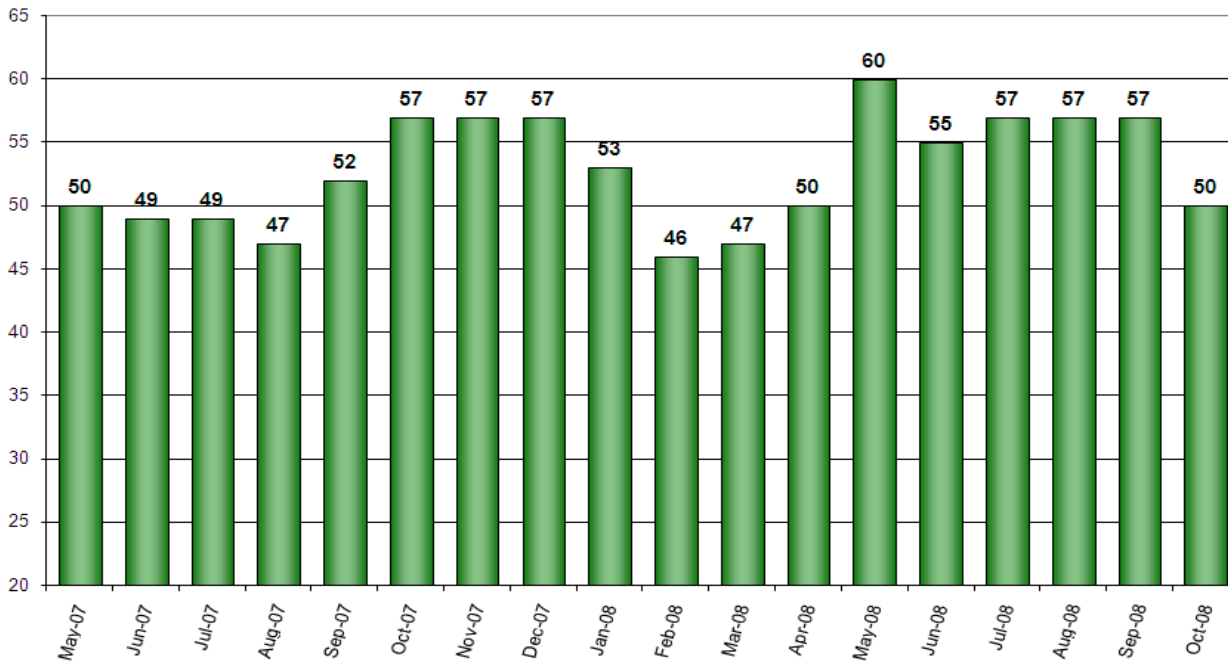
Pre-Trial vs. Post-Trial vs. Holds in Custody on First Day of Month



Count of Persons Held Pre-trial more than 150 Days on First Day of Month



Count of Persons Held Pre-trial on Murder Related Charges on First Day of Month



Count of Pre-trial persons with Murder Related Charges by Length of Stay on First Day of Month

