

Multnomah County Sheriff's Office

**Monthly Jail Statistics Report
November 2008**

DECEMBER 11, 2008



**Robert Skipper
SHERIFF**

**503 988-4300 PHONE
503 988-4500 TTY**

www.mcso.us/public/

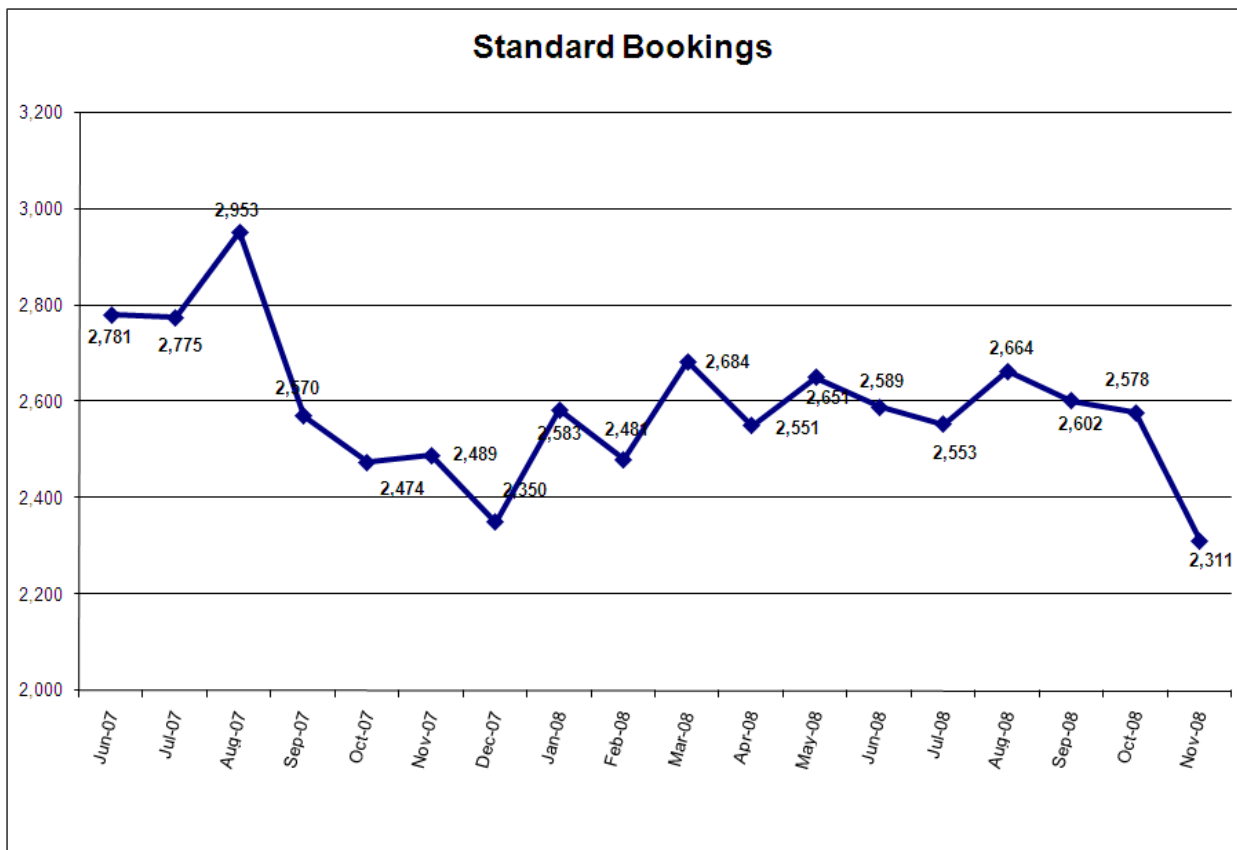
501 SE HAWTHORNE BLVD., Suite 350 • Portland, OR 97214

Multnomah County Monthly Jail Statistics November 2008

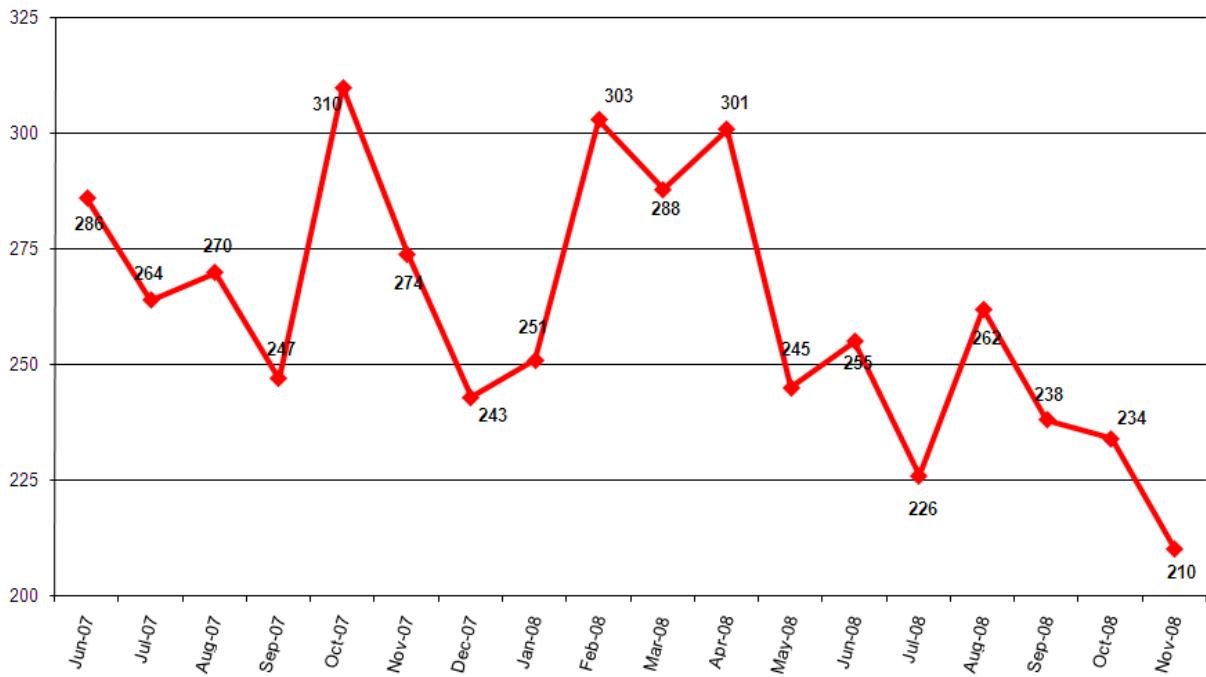
Standard bookings in November dropped to 2311, the lowest number observed in the past 18 months. TSI bookings fell to just 210, and Portland Project 57 bookings declined to 347. However, Cite & ID bookings saw a modest rise in November to 352.

Average length of stay (ALS) for November rose to 18.52 days, the highest level in nearly a year. Average daily population (ADP) stood at 1464, comparable to the previous two months. Though there were no emergency population releases (EPRs) of inmates in November, the jail did go into emergency release status on 13 days during the month, reaching 97% of capacity or higher. Seventy-eight (78) time-served offenders were released between 12 AM and 8 AM during November.

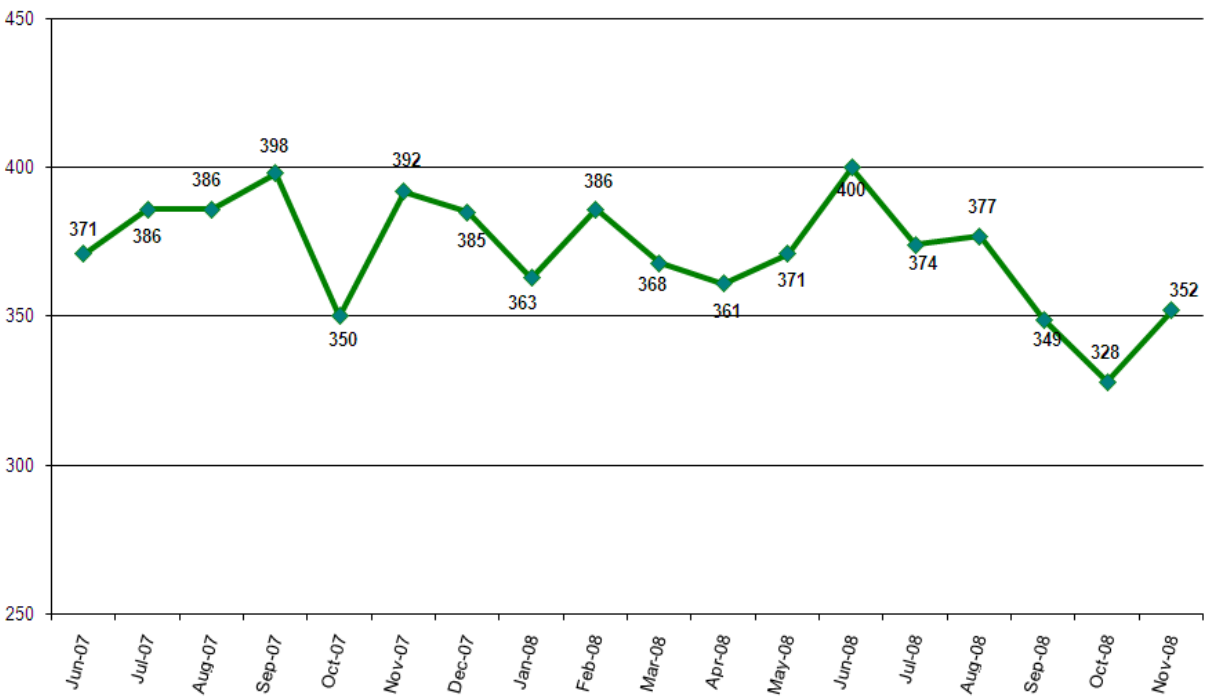
The number of inmates jailed pre-trial, post-trial and for holds remained relatively stable from November first to December first, with holds comprising the bulk of the custodial population (567). The count of inmates held pre-trial more than 150 days dropped by two from the previous month to 91. Inmates held pre-trial on murder-related charges totaled 47 on December first, with four of these inmates held for more than two years.



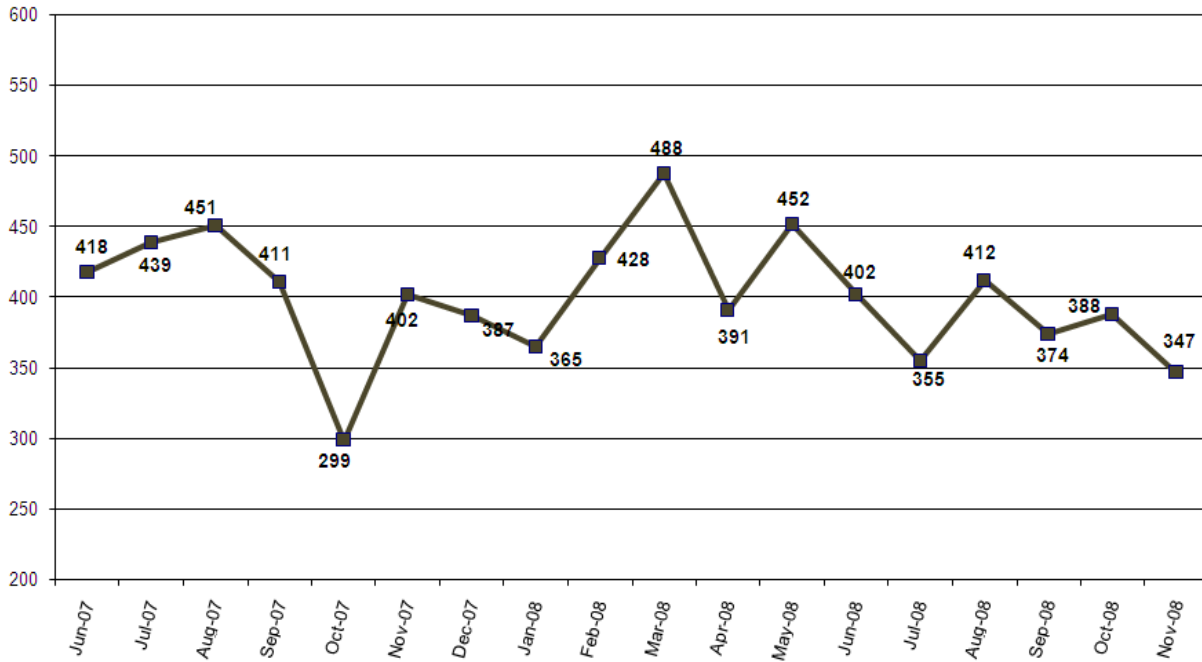
Turn-Self-In (TSI) Bookings



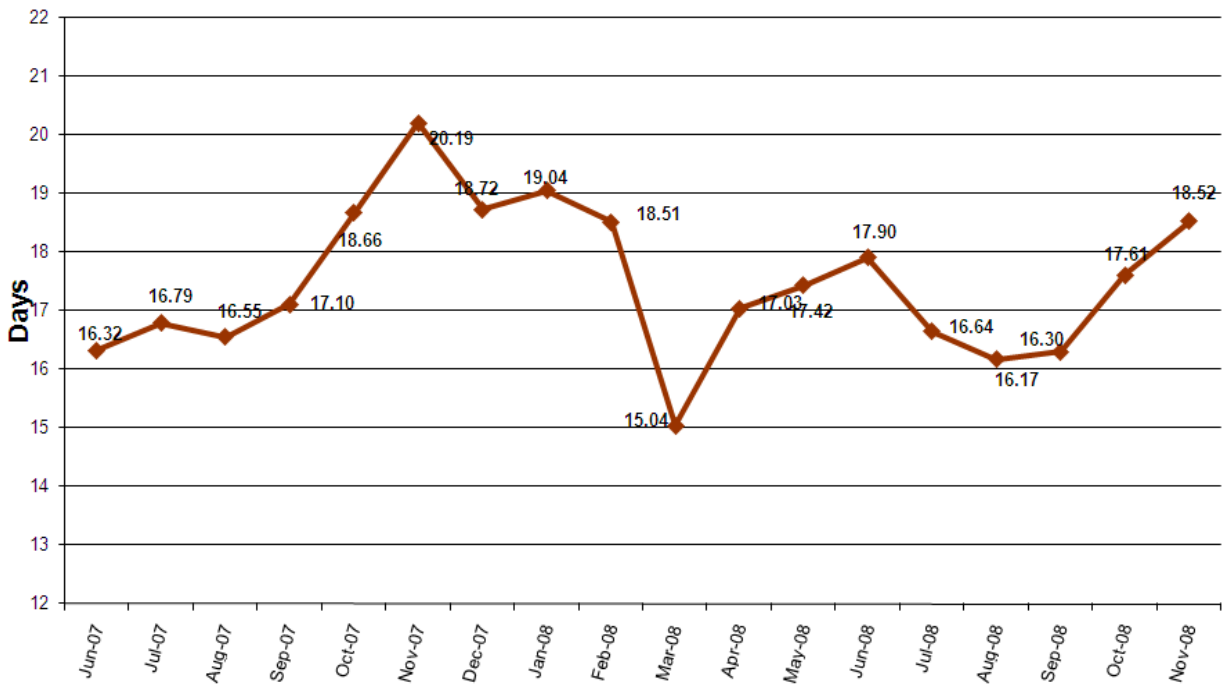
Cite & ID Bookings

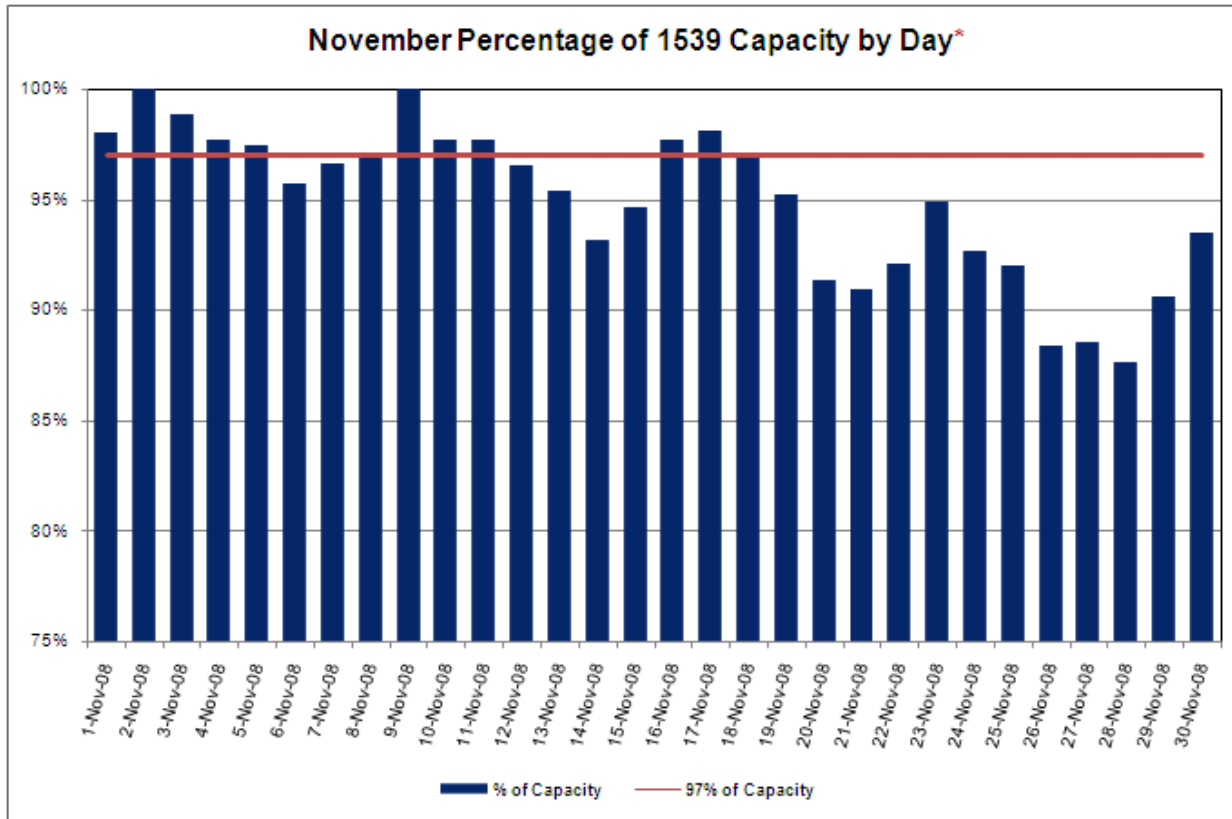
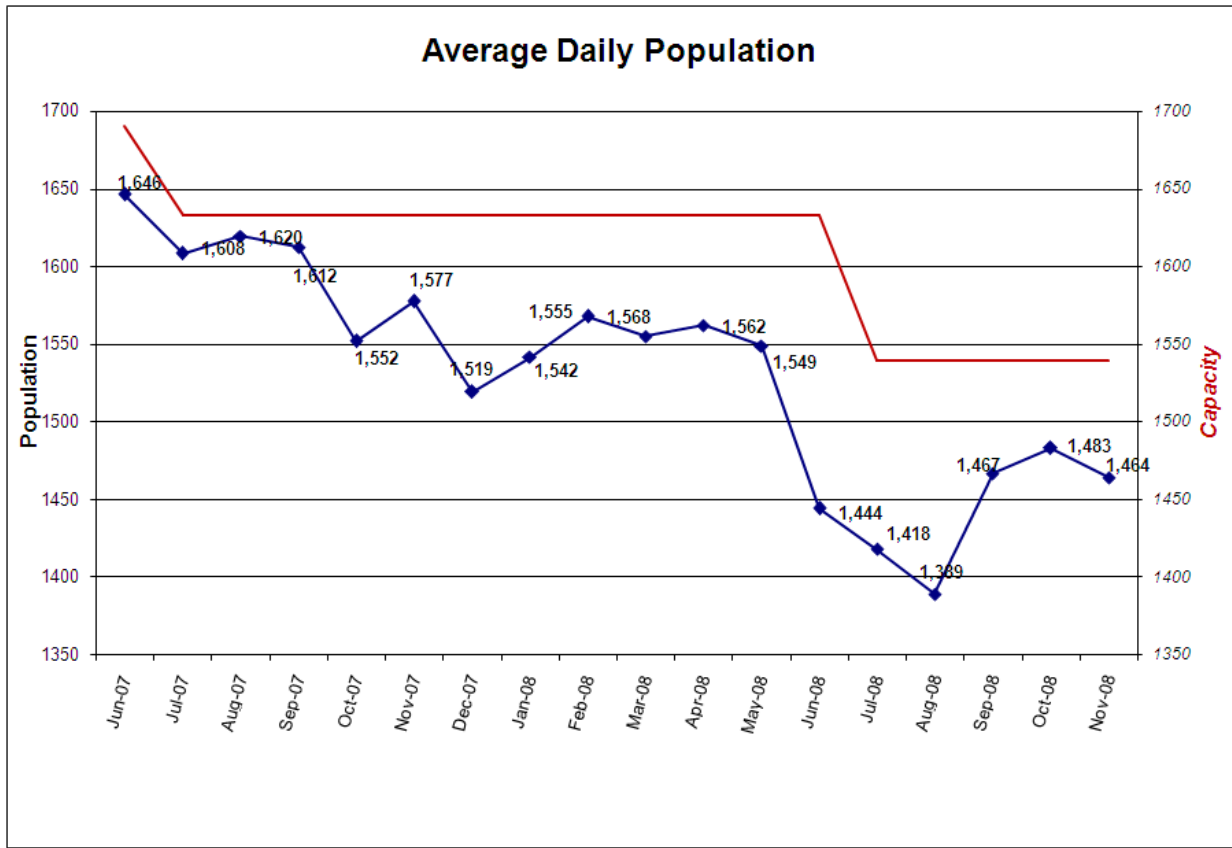


Portland 57 Project - Total Bookings by Month



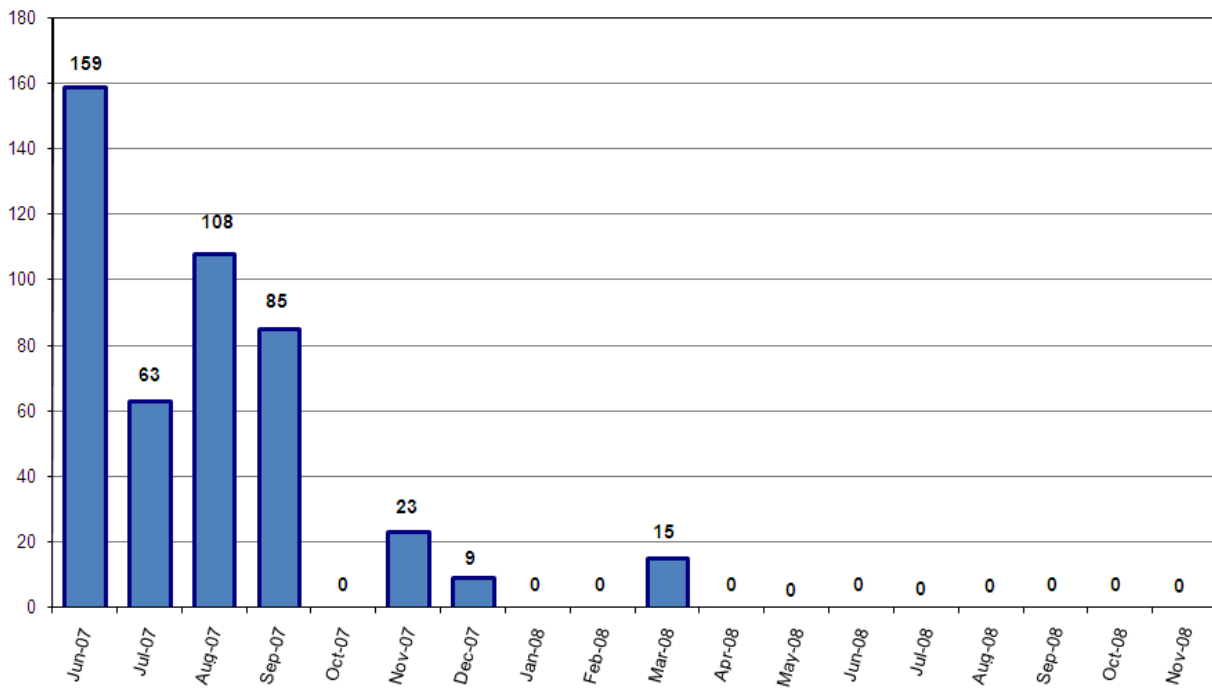
Average Length of Stay (in days)



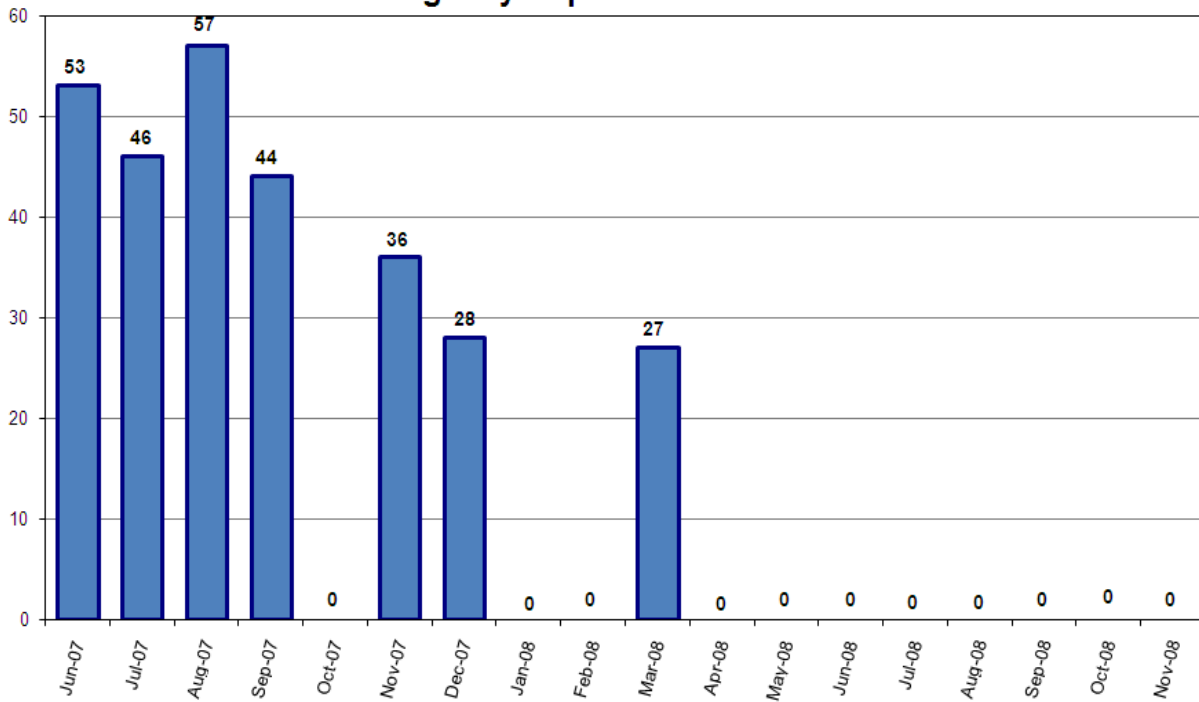


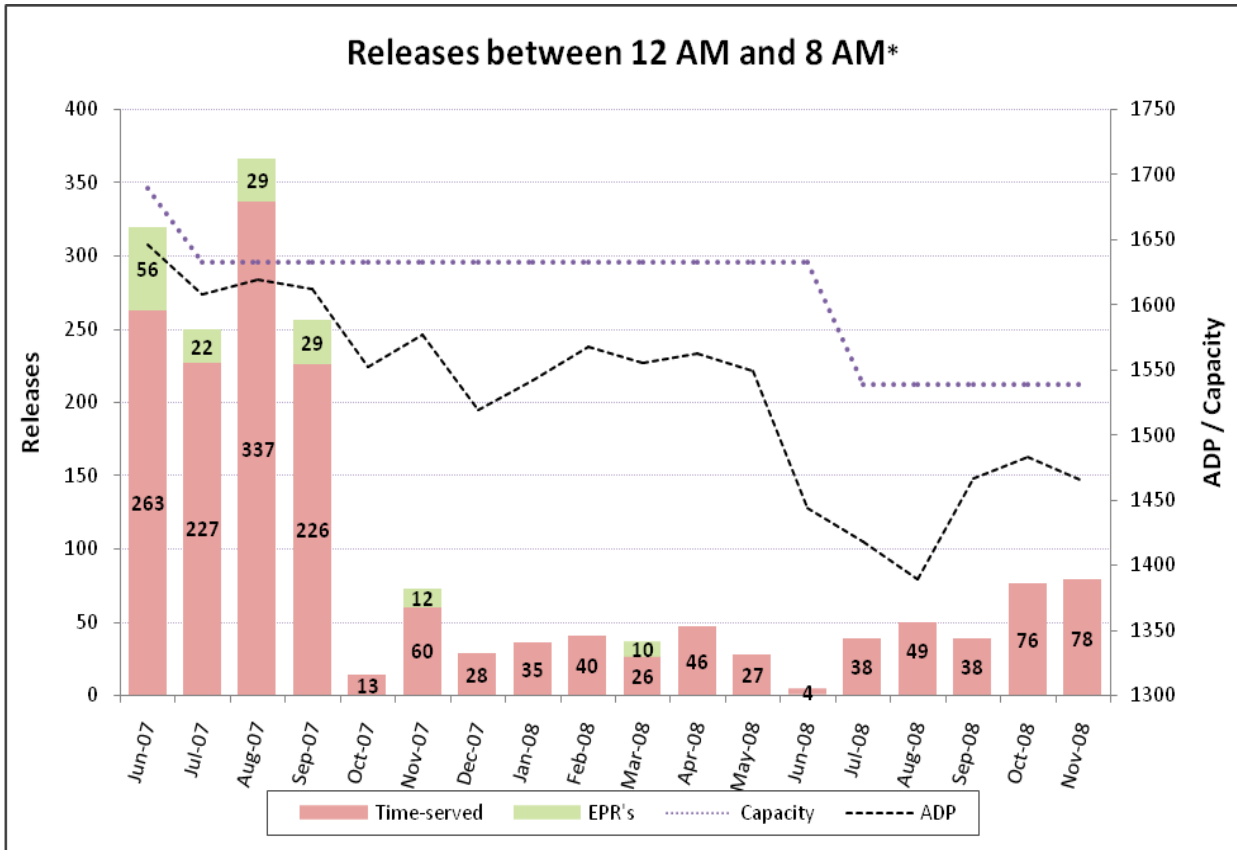
*Red bars indicate days on which EPRs occurred, if any. Note that EPRs do not always or only occur when capacity exceeds the 97% threshold. Efforts are made to balance the population to the demands of the classification system for specific types of jail beds and balance the space needs for male or female inmates. Additionally, jail capacity varies throughout the day, with these capacity calculations based on 10PM population counts.

Emergency Population Releases by Month

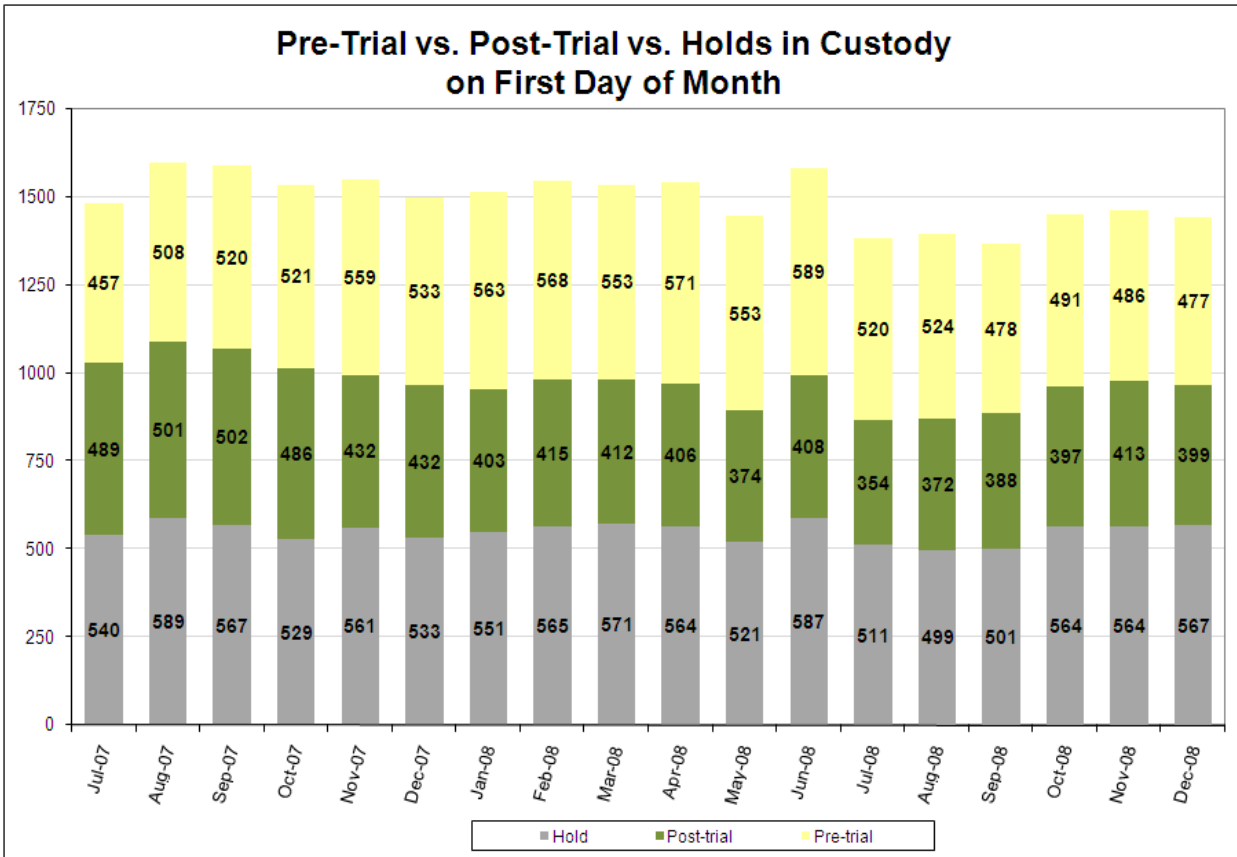


Monthly Average Score of Emergency Population Releases

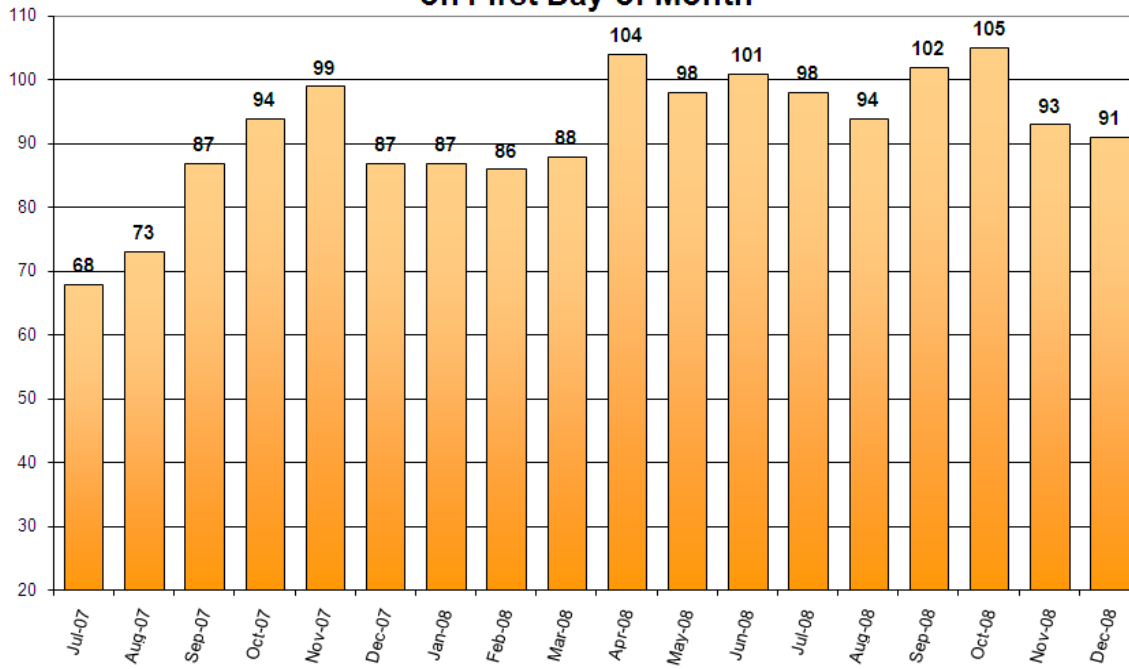




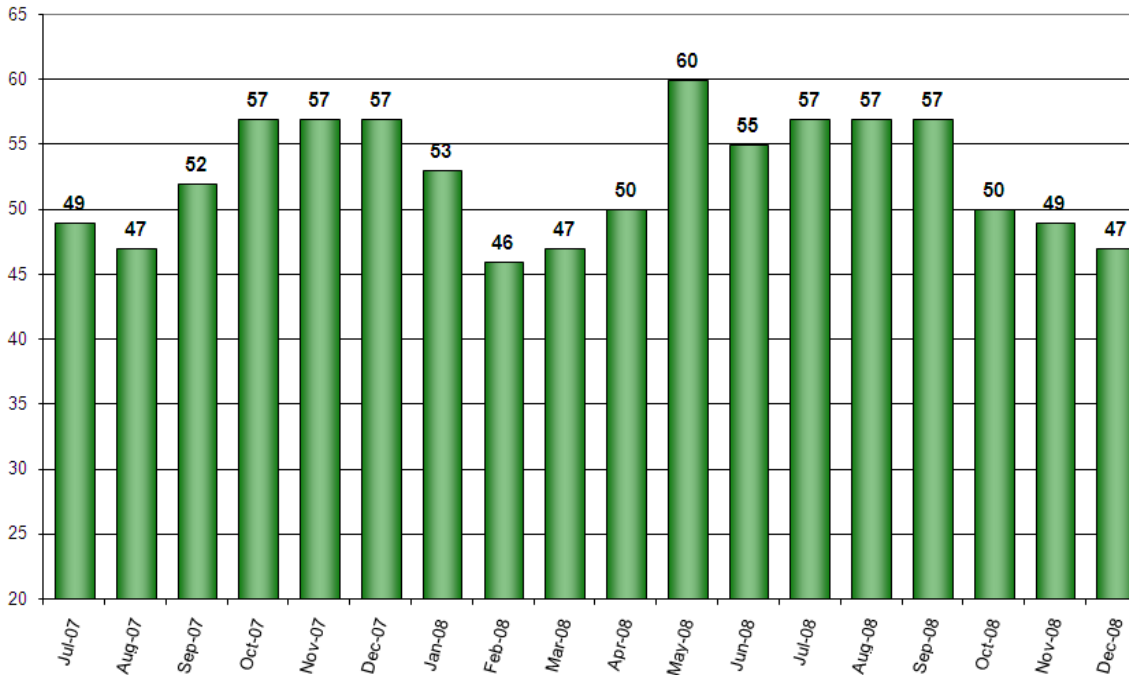
*Court-ordered and recognizance releases not included.



Count of Persons Held Pre-trial more than 150 Days on First Day of Month



Count of Persons Held Pre-trial on Murder Related Charges on First Day of Month



Count of Pre-trial persons with Murder Related Charges by Length of Stay on First Day of Month

