

*Multnomah County Sheriff's Office*

**Monthly Jail Statistics Report  
July 2008**

**REVISED SEPTEMBER 11, 2008**



**Robert Skipper  
SHERIFF**

**503 988-4300 PHONE  
503 988-4500 TTY**

[www.mcso.us/public/](http://www.mcso.us/public/)

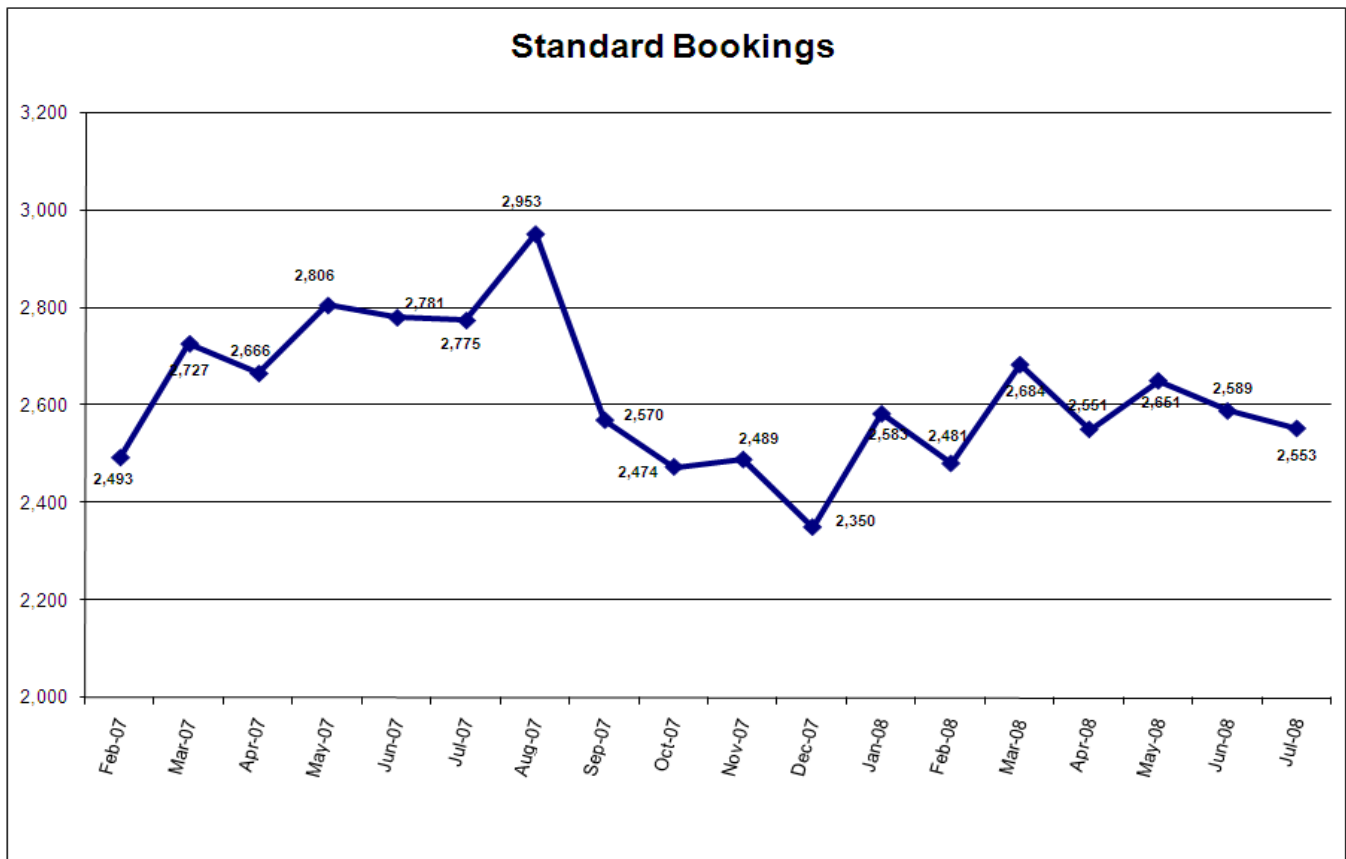
**501 SE HAWTHORNE BLVD., Suite 350 • Portland, OR 97214**

## Multnomah County Monthly Jail Statistics July 2008

There were 36 fewer Standard bookings in July than there were in June, dropping from 2,589 to 2,553. TSI bookings also dropped and were at their lowest level in 18 months, totaling just 226 for July. Cite & ID bookings decreased as well, as did bookings under Portland Project 57 due to the change in contract with the City of Portland from 57 to 10 jail beds.

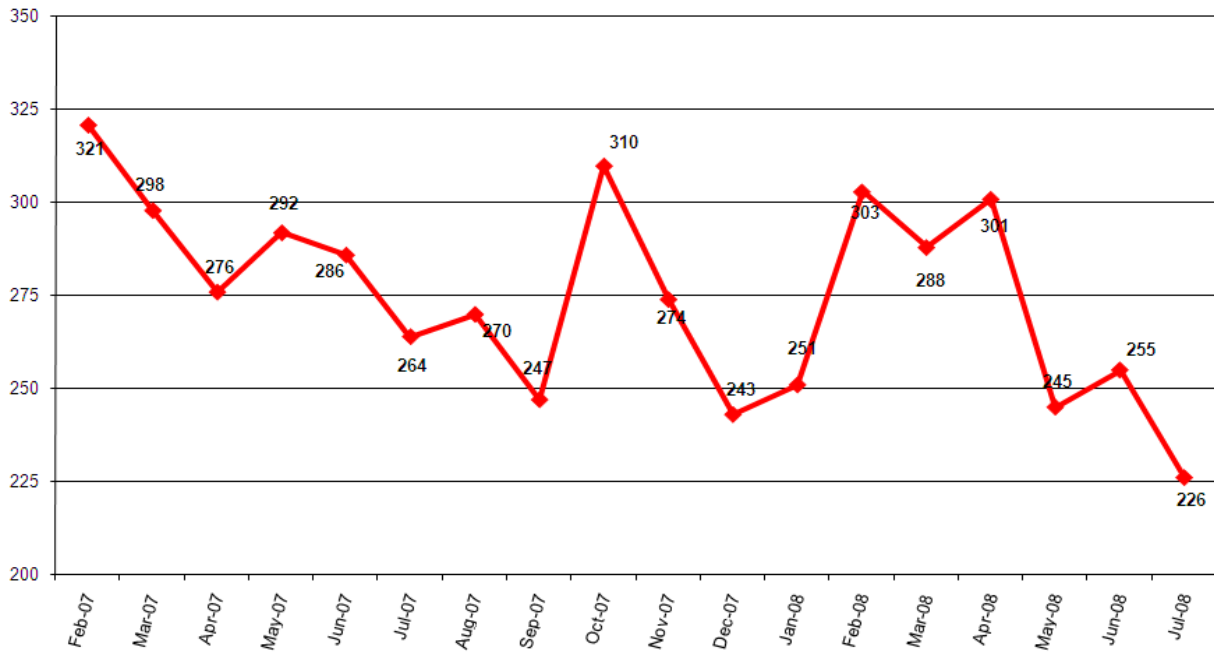
Total capacity was reduced from 1633 to 1539 on July 1 due to budget reductions. Multnomah County jails housed an average of 1418 inmates per day during July. Average length of stay dropped by more than a full day compared to June, declining from 17.9 days to 16.64 days.† There were no emergency population releases in July.

The number of inmates jailed pretrial, post trial and for holds remained relatively stable from July 1 to August 1. The count of inmates held pre-trial more than 150 days totaled 94, four fewer than the previous month. Inmates held pre-trial on murder-related charges remained at 57, with the number of those held two years or more totaling 6 on August 1.

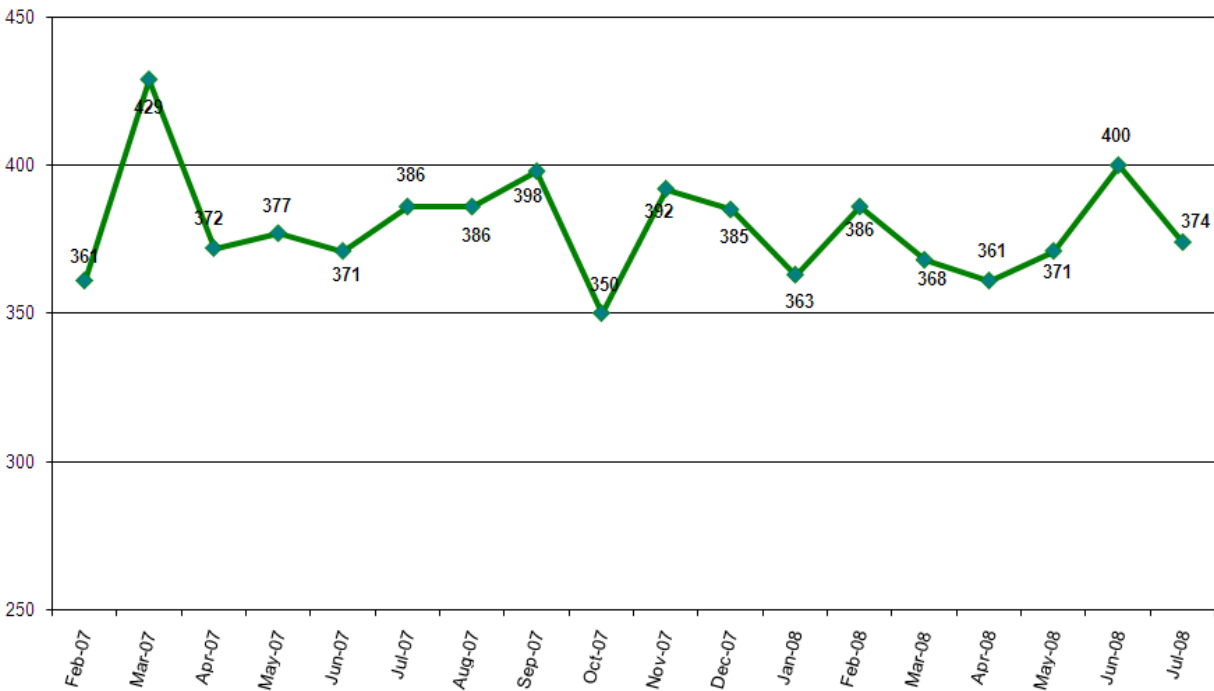


† For this month, booking, ADP, and ALS statistics are based on a sample of 26 of 31 days in July.

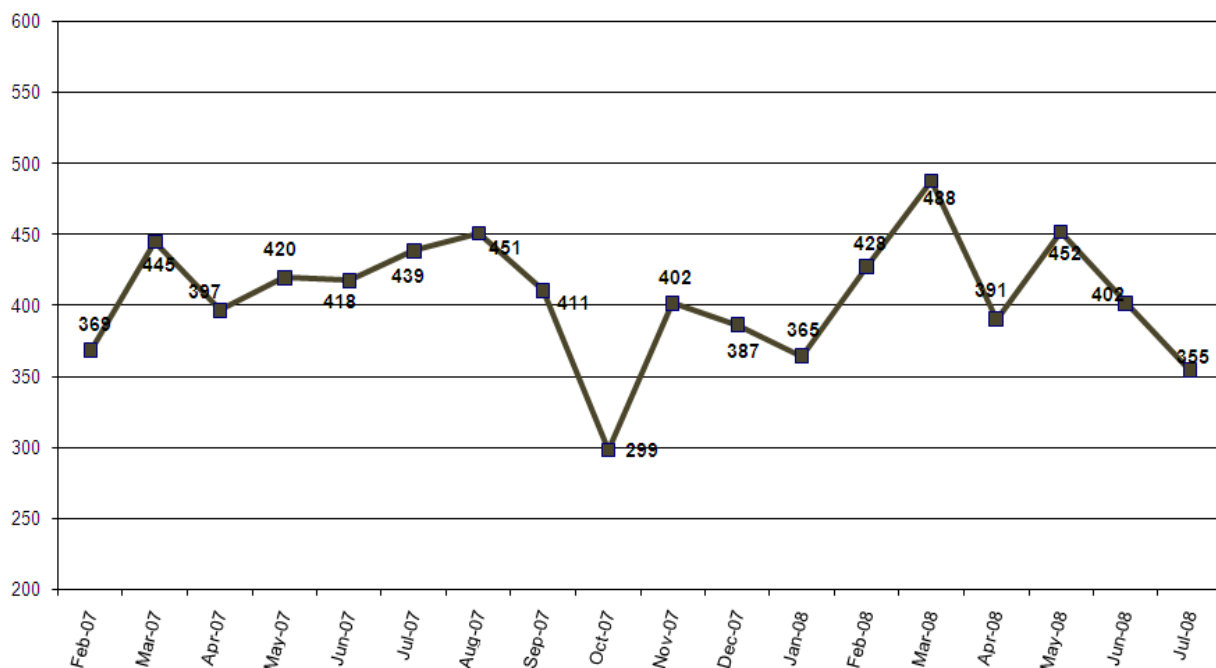
### Turn-Self-In (TSI) Bookings



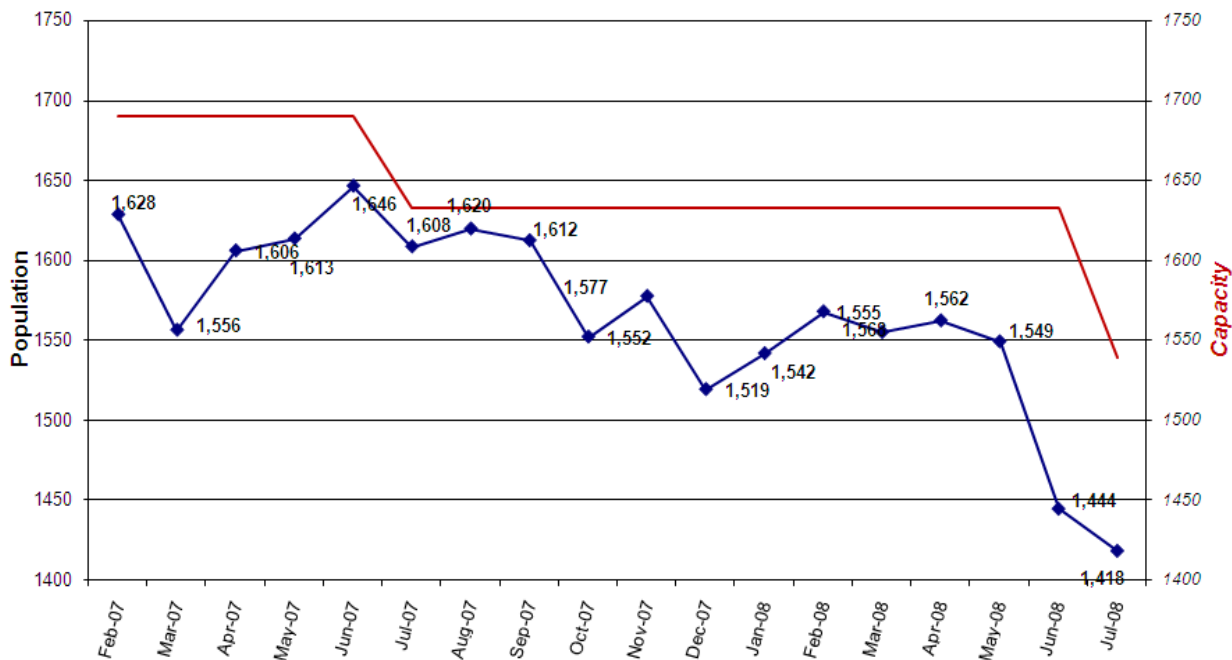
### Cite & ID Bookings



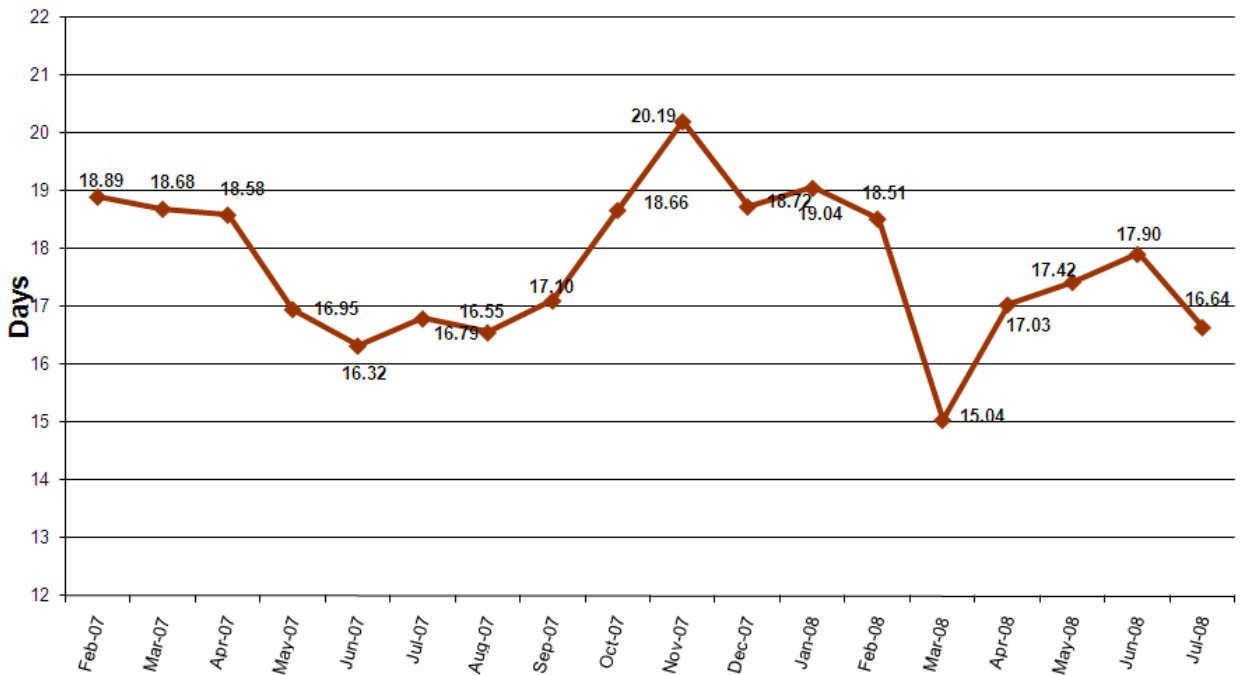
**Portland 57 Project - Total Bookings by Month**



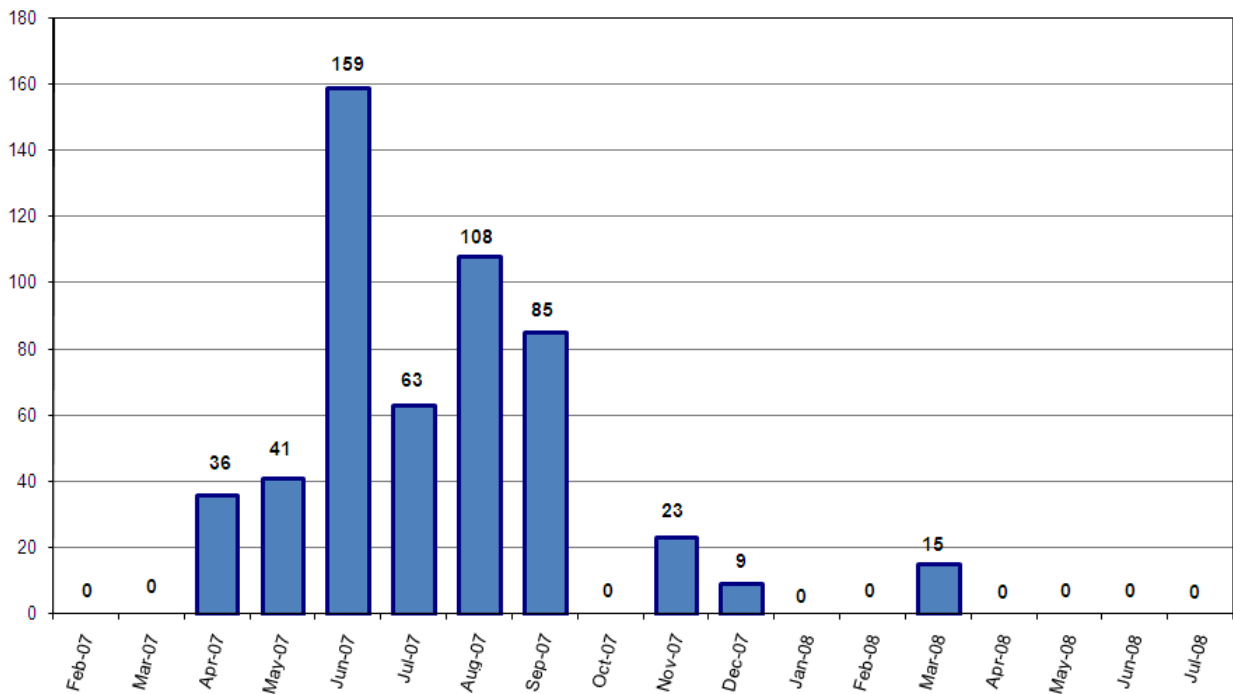
**Average Daily Population**



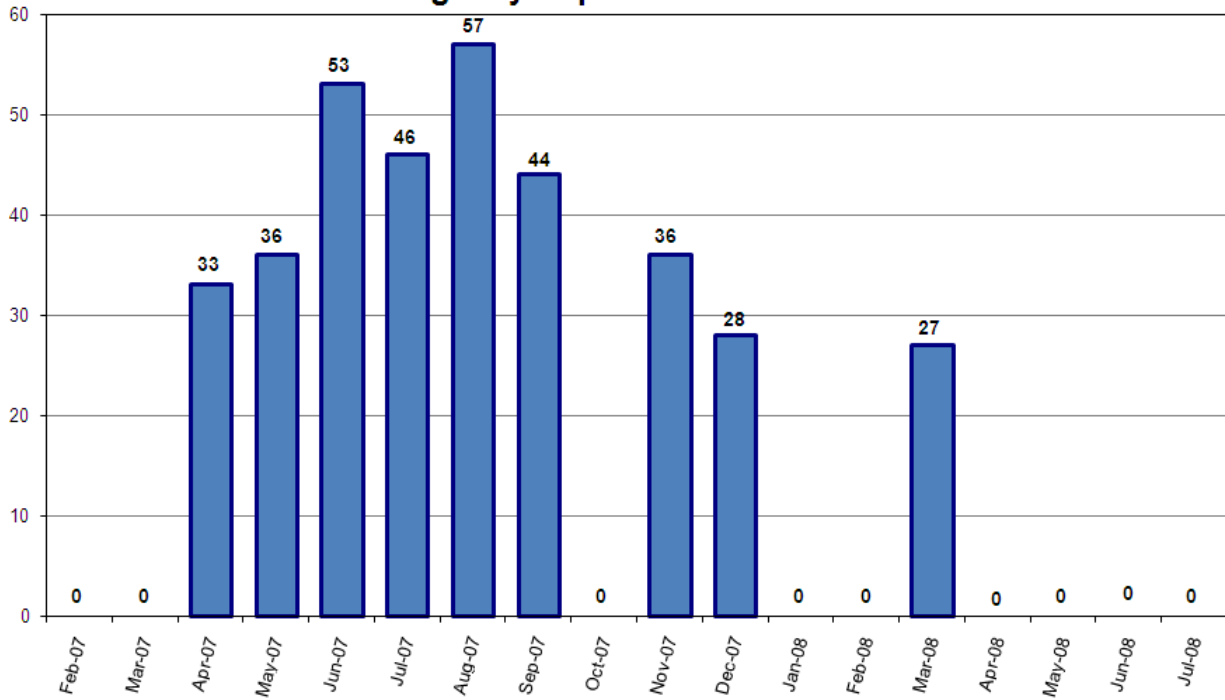
### Average Length of Stay (in days)



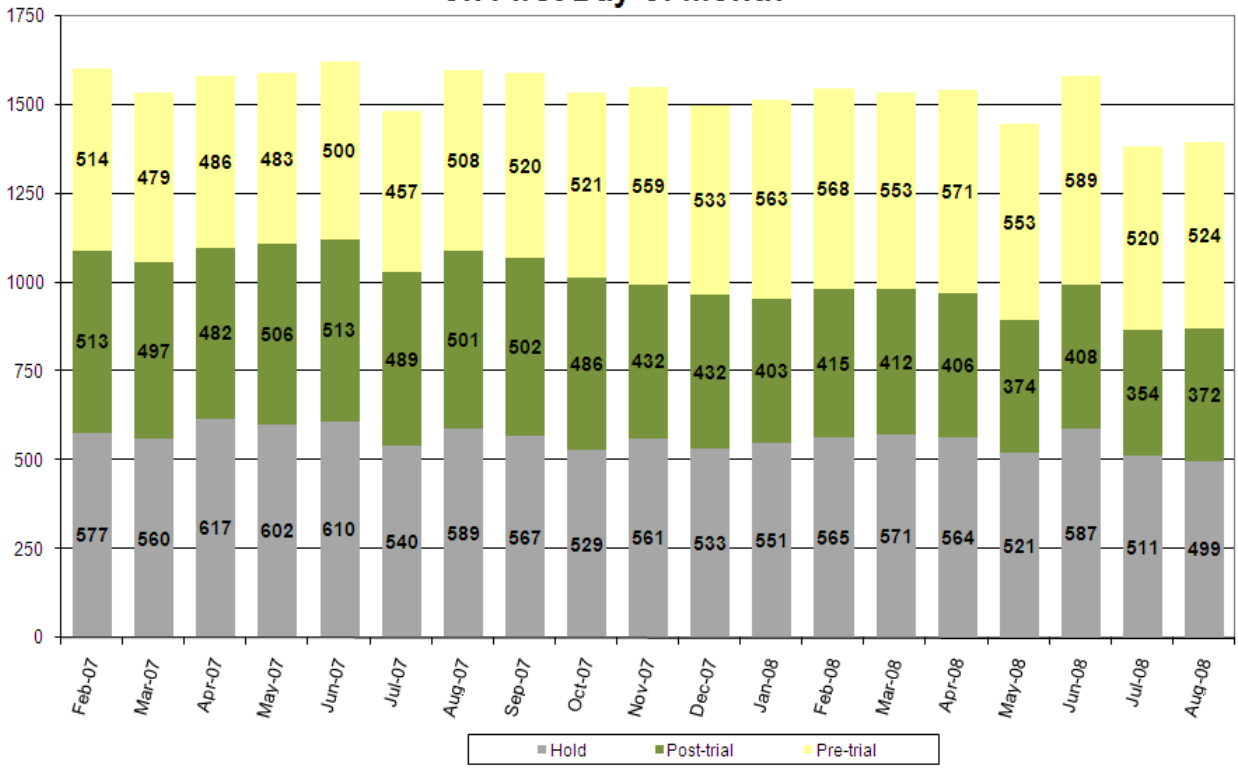
### Emergency Population Releases by Month



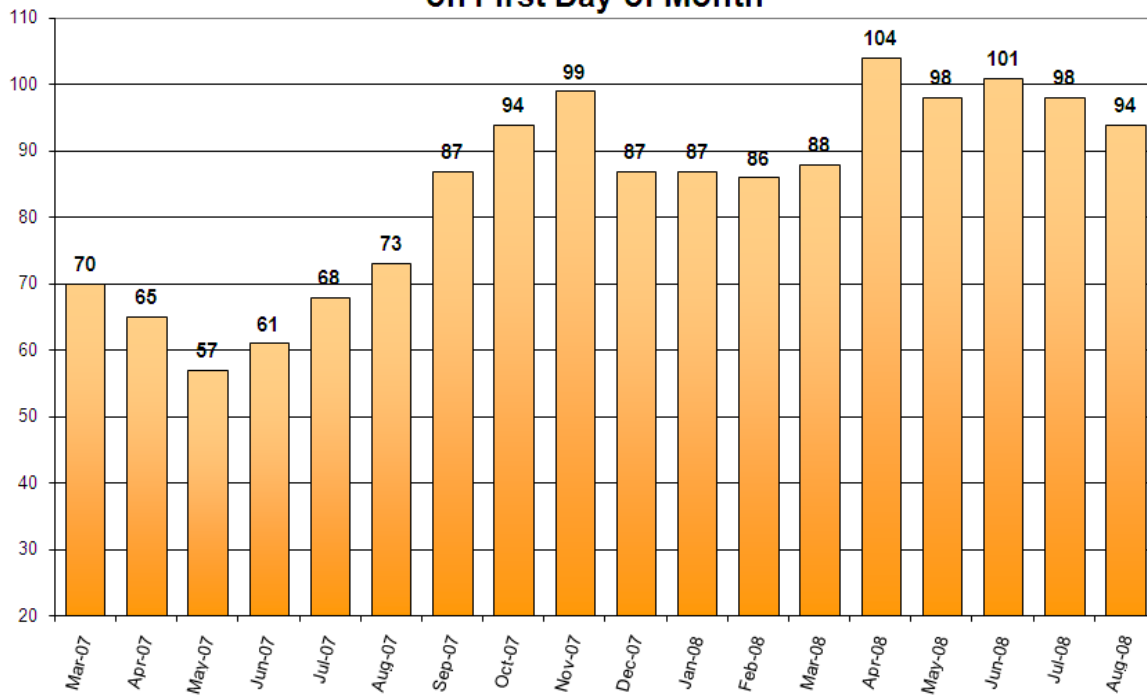
### Monthly Average Score of Emergency Population Releases



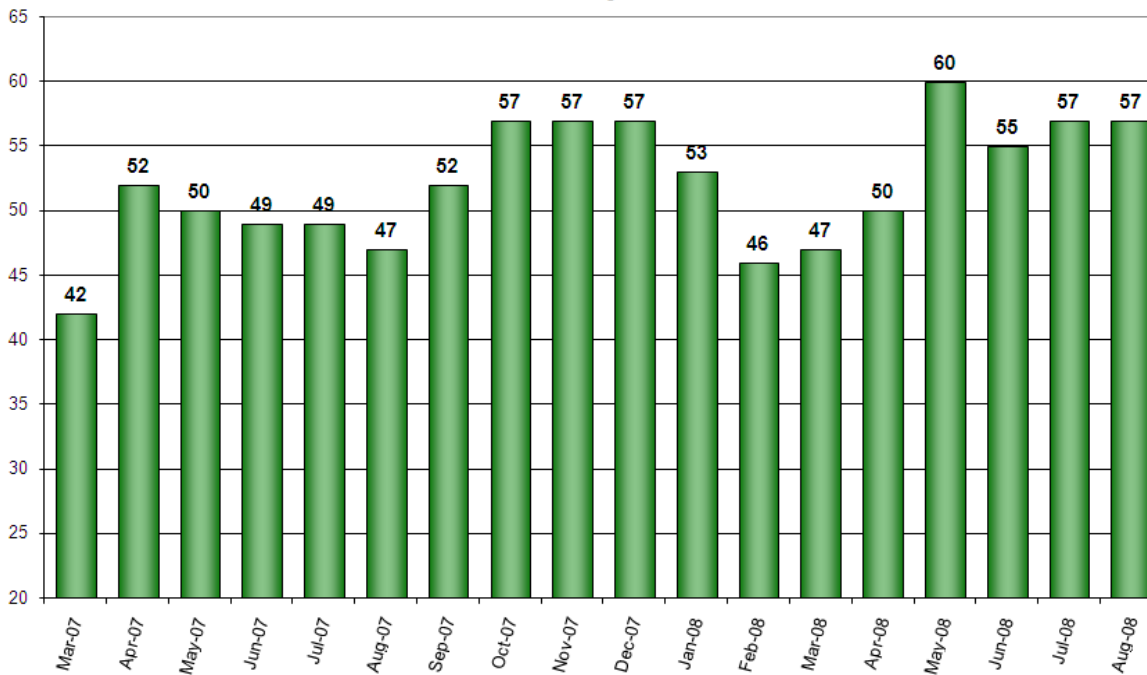
### Pre-Trial vs. Post-Trial vs. Holds in Custody on First Day of Month



**Count of Persons Held Pre-trial more than 150 Days on First Day of Month**



**Count of Persons Held Pre-trial on Murder Related Charges on First Day of Month**



### Count of Pre-trial persons with Murder Related Charges by Length of Stay on First Day of Month

