

Multnomah County Sheriff's Office

**Monthly Jail Statistics Report
December 2008**

JANUARY 7, 2009



**Bob Skipper
SHERIFF**

**503 988-4300 PHONE
503 988-4500 TTY**

www.mcso.us/public/

501 SE HAWTHORNE BLVD., Suite 350 • Portland, OR 97214

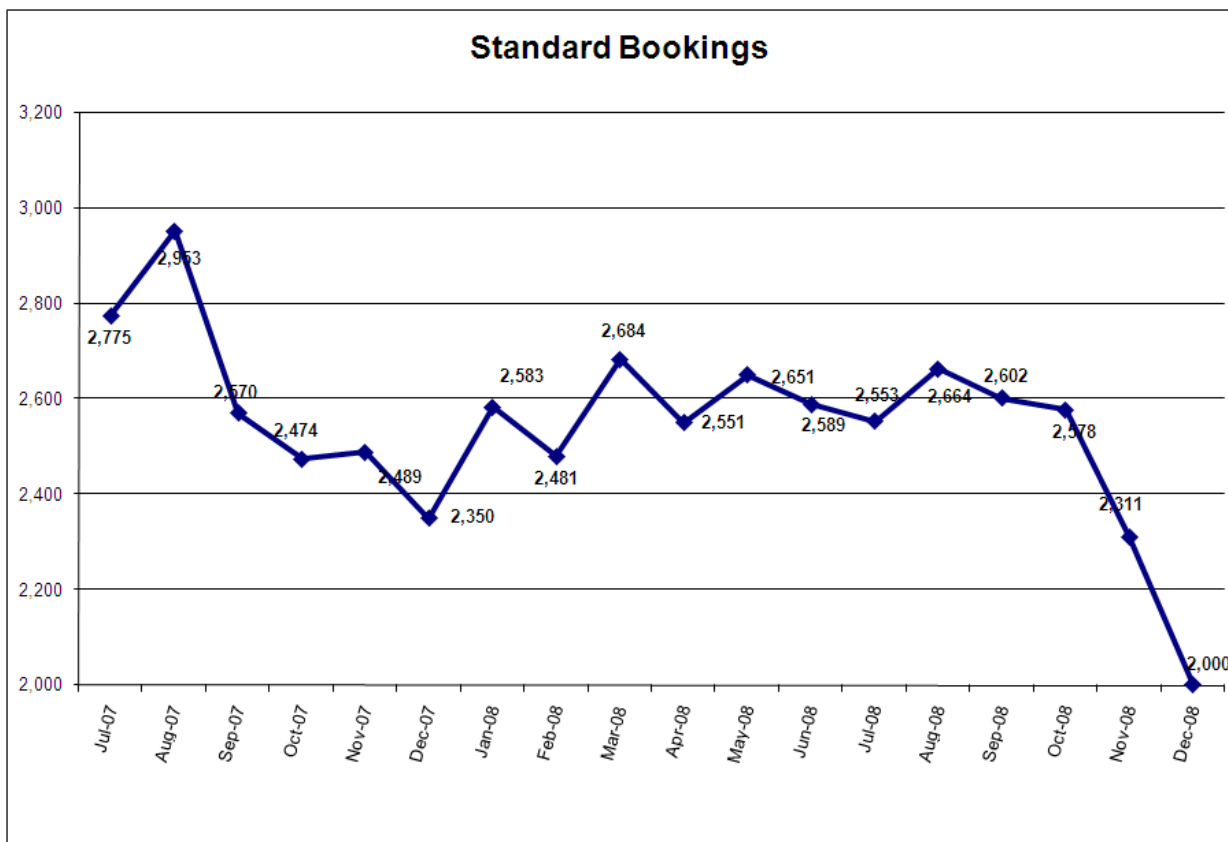
Multnomah County Monthly Jail Statistics December 2008

Standard bookings dropped to 2000 in December, continuing the decline observed over the past four months. Cite & ID bookings dropped to 312 and Portland Project 57 bookings fell to 252, their lowest levels in the past 18 months. However, turn-self-in (TSI) bookings rose slightly to 242.

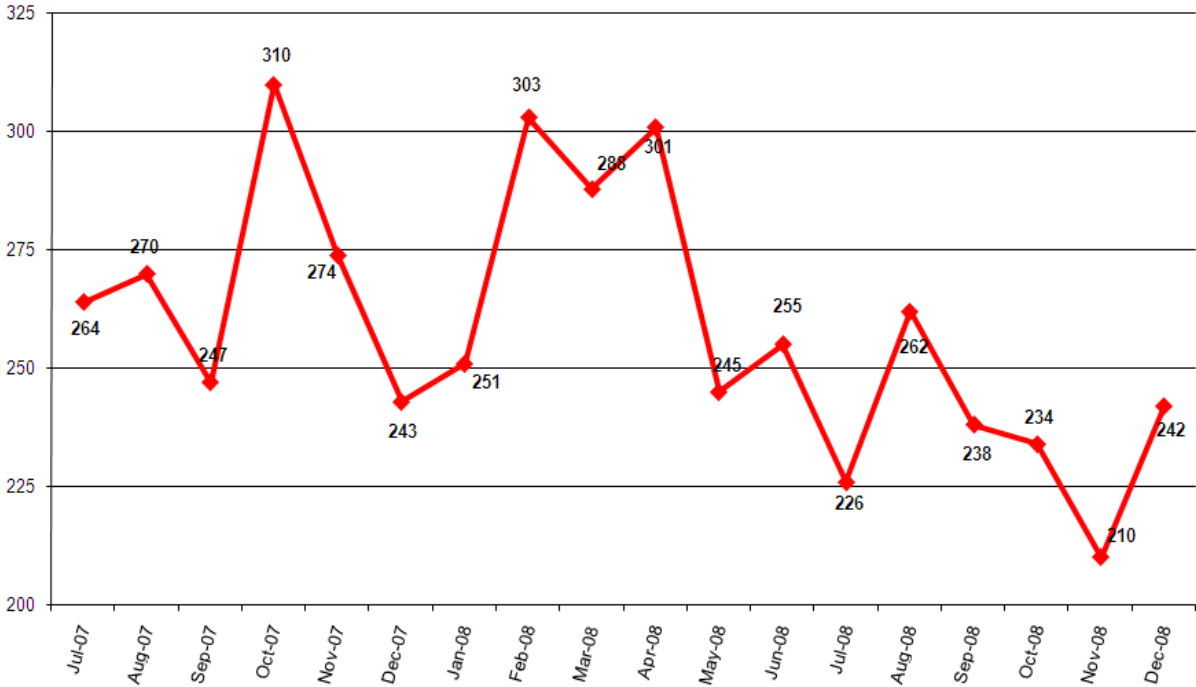
Average length of stay (ALS) for December decreased to 17.6 days, but remains comparable to the average for the past year. Average daily population (ADP) declined to 1395, its lowest level since August 2008. Despite no emergency population releases (EPRs) during the month, the jail did go into emergency release status on three days during December, reaching 97% of capacity or higher. Only 12 time-served offenders were released between 12 AM and 8 AM, the time of day when access to public transportation and social services is most limited.

The count of inmates jailed pre-trial, post-trial and for holds all declined slightly from December first to January first, consistent with the monthly decline in bookings and ADP. The number of inmates jailed pre-trial more than 150 days increased by two from the previous month to 93. Those held pre-trial on murder-related charges rose from 47 to 52, with four such inmates held more than two years.

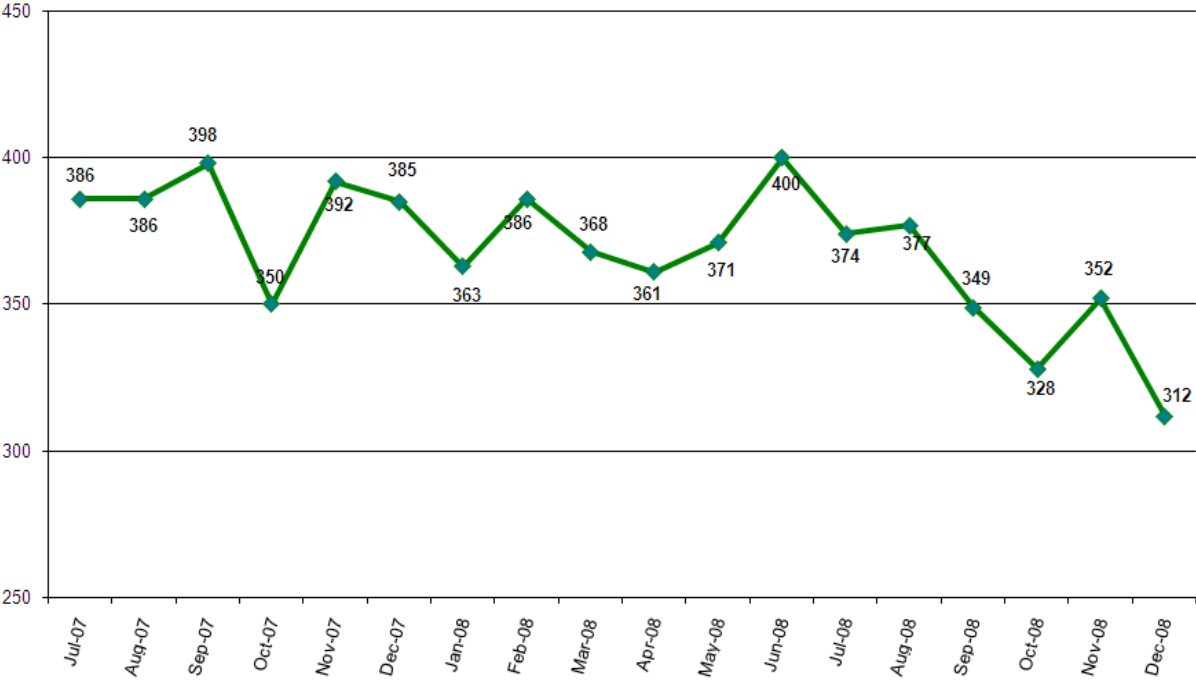
It is also worth noting that the final two weeks of December 2008 saw some of the most extreme weather conditions the Portland metro area has experienced in more than a decade, dramatically impacting the operations of business, government, schools and transportation in the local area.



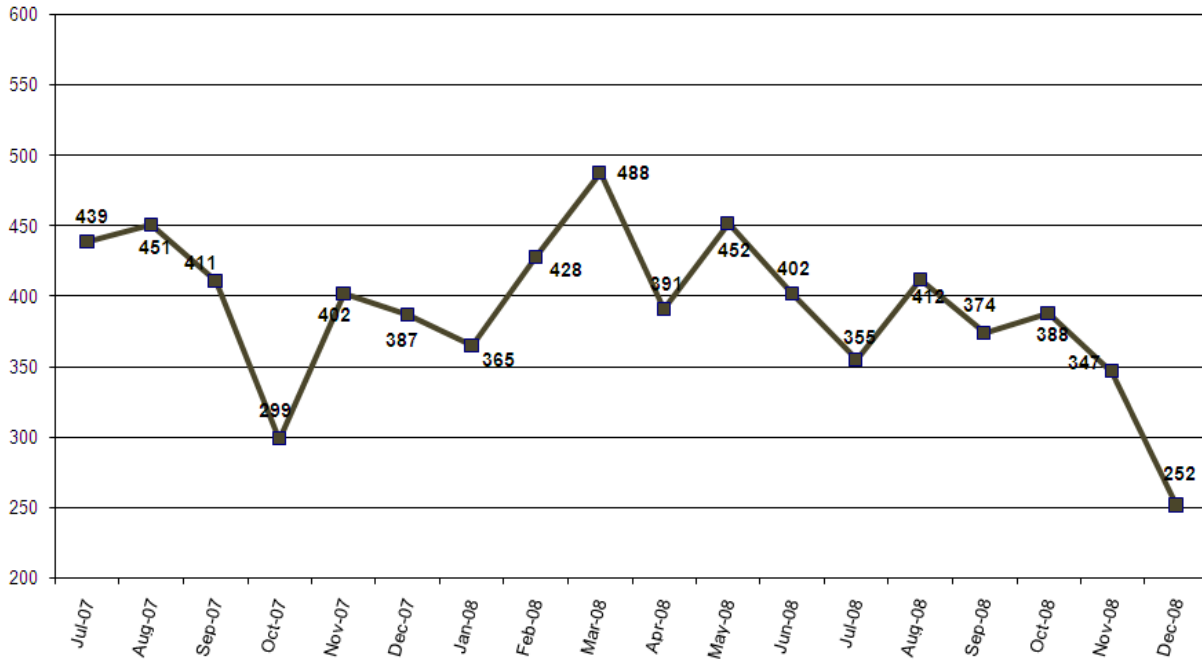
Turn-Self-In (TSI) Bookings



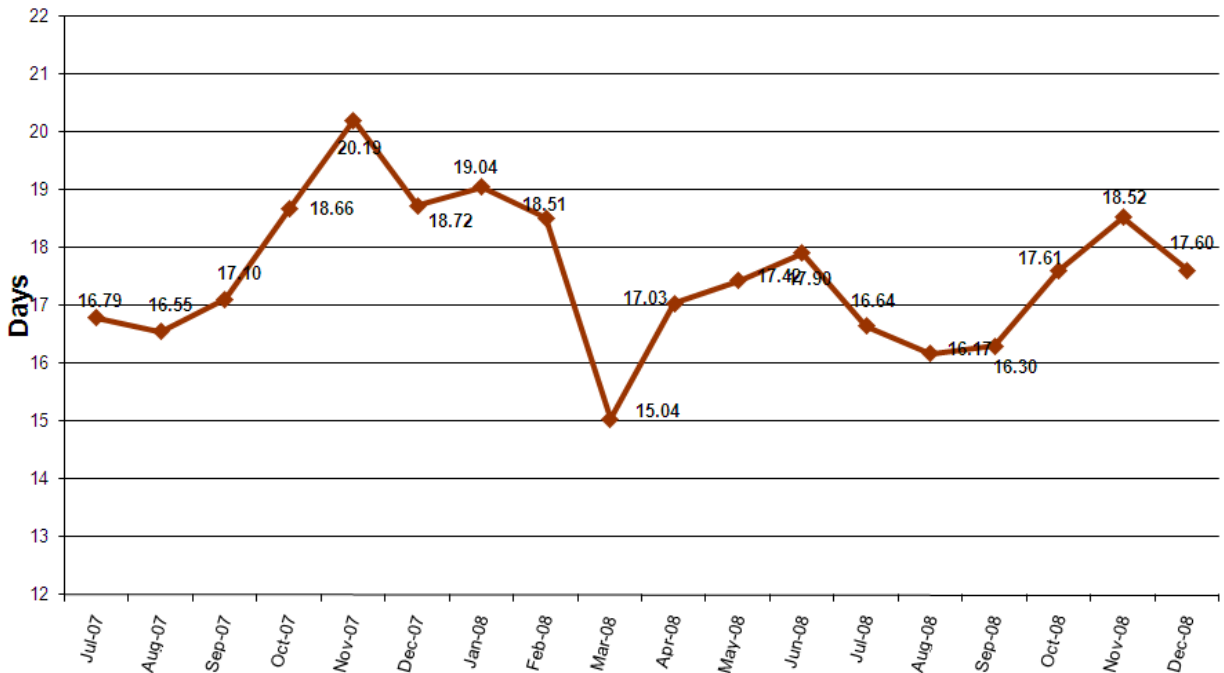
Cite & ID Bookings

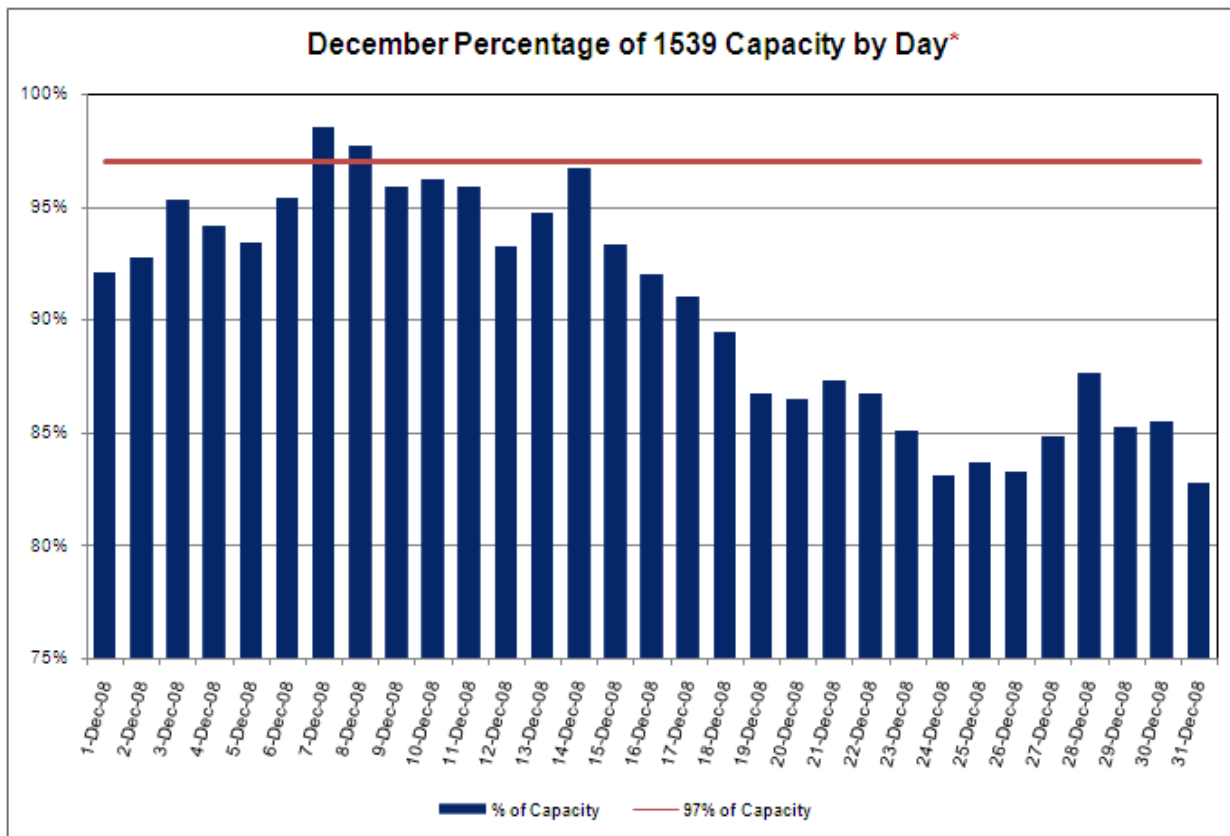
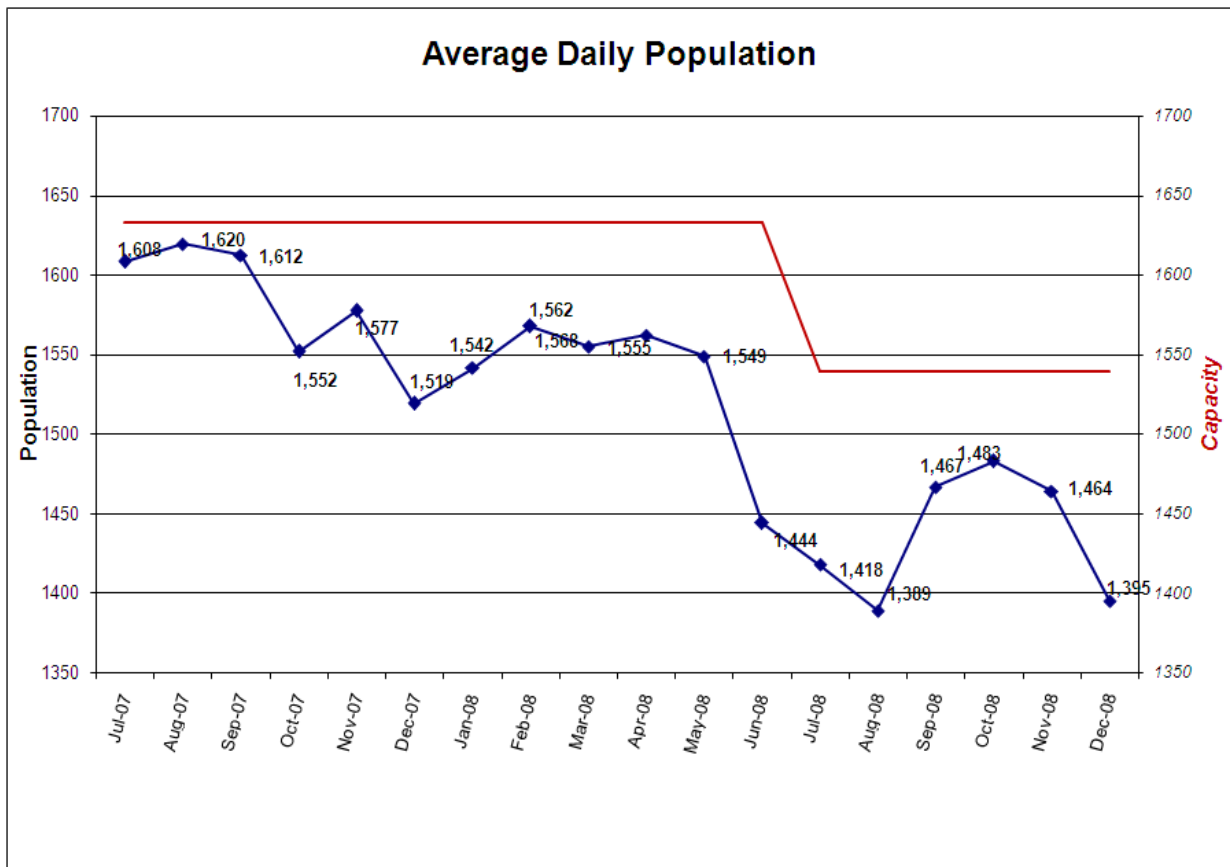


Portland 57 Project - Total Bookings by Month



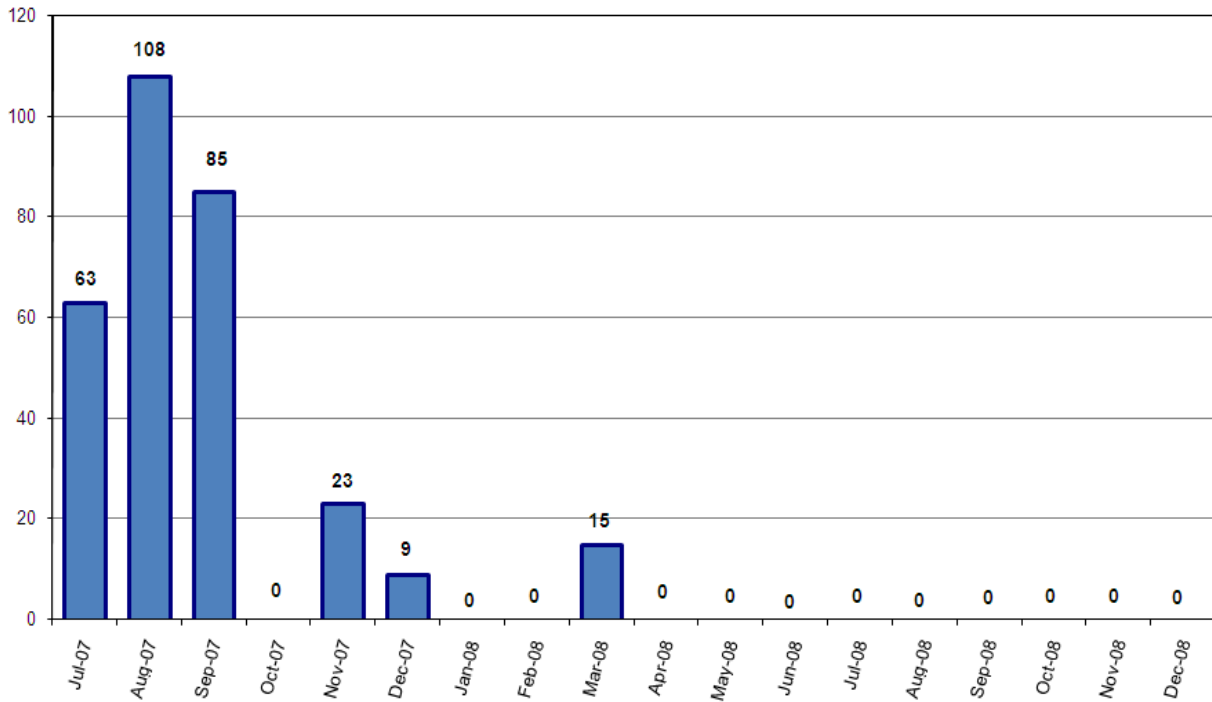
Average Length of Stay (in days)



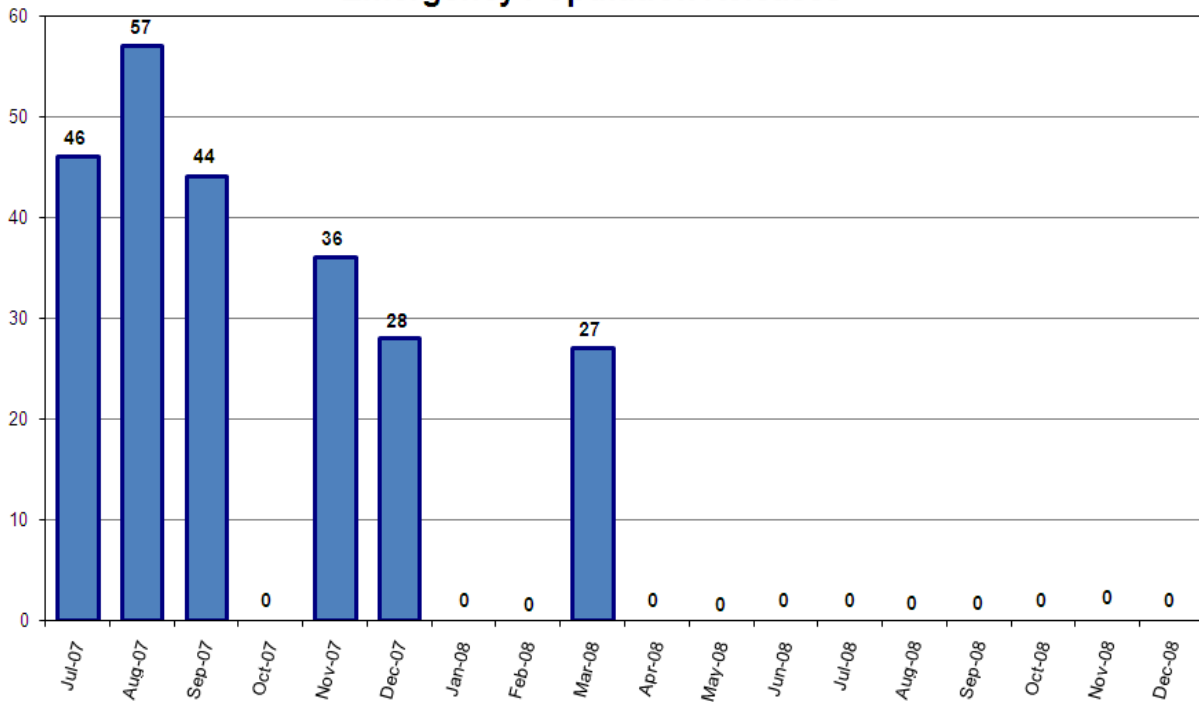


*Red bars indicate days on which EPRs occurred, if any. Note that EPRs do not always or only occur when capacity exceeds the 97% threshold. Efforts are made to balance the population to the demands of the classification system for specific types of jail beds and balance the space needs for male or female inmates. Additionally, jail capacity varies throughout the day, with these capacity calculations based on 10PM population counts.
 MCSO Resource Analysis Unit

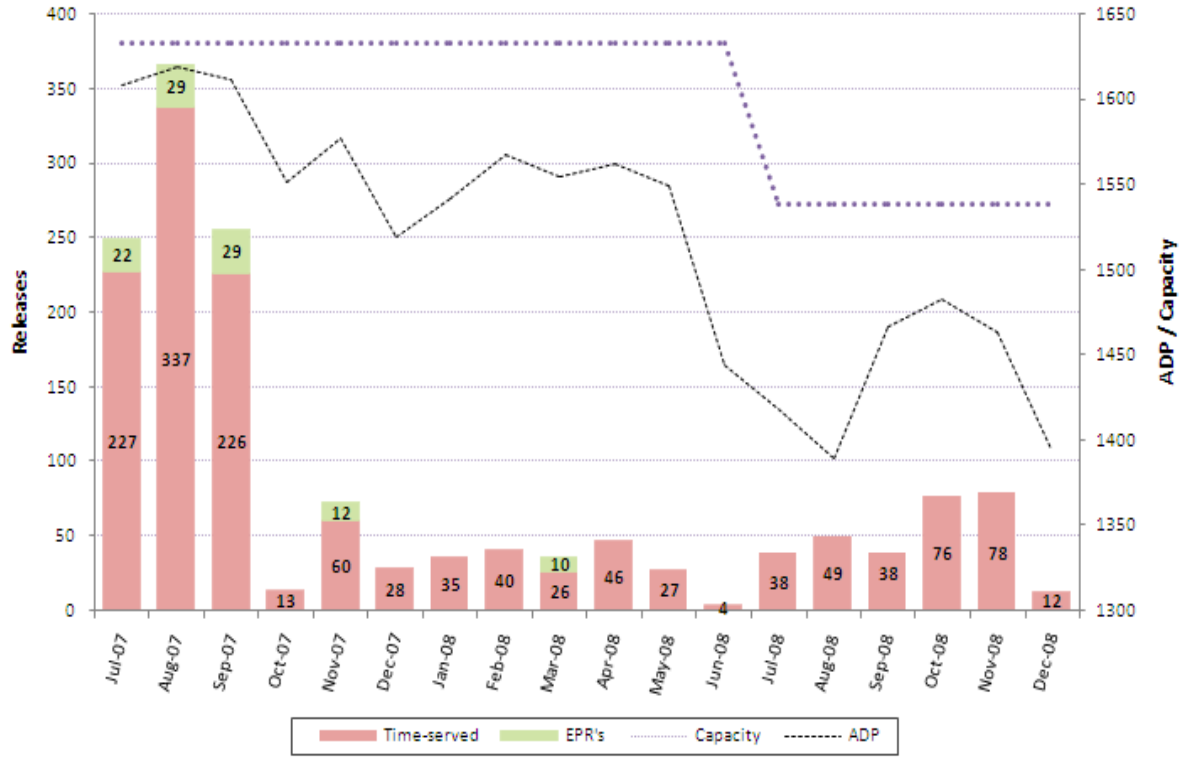
Emergency Population Releases by Month



Monthly Average Score of Emergency Population Releases

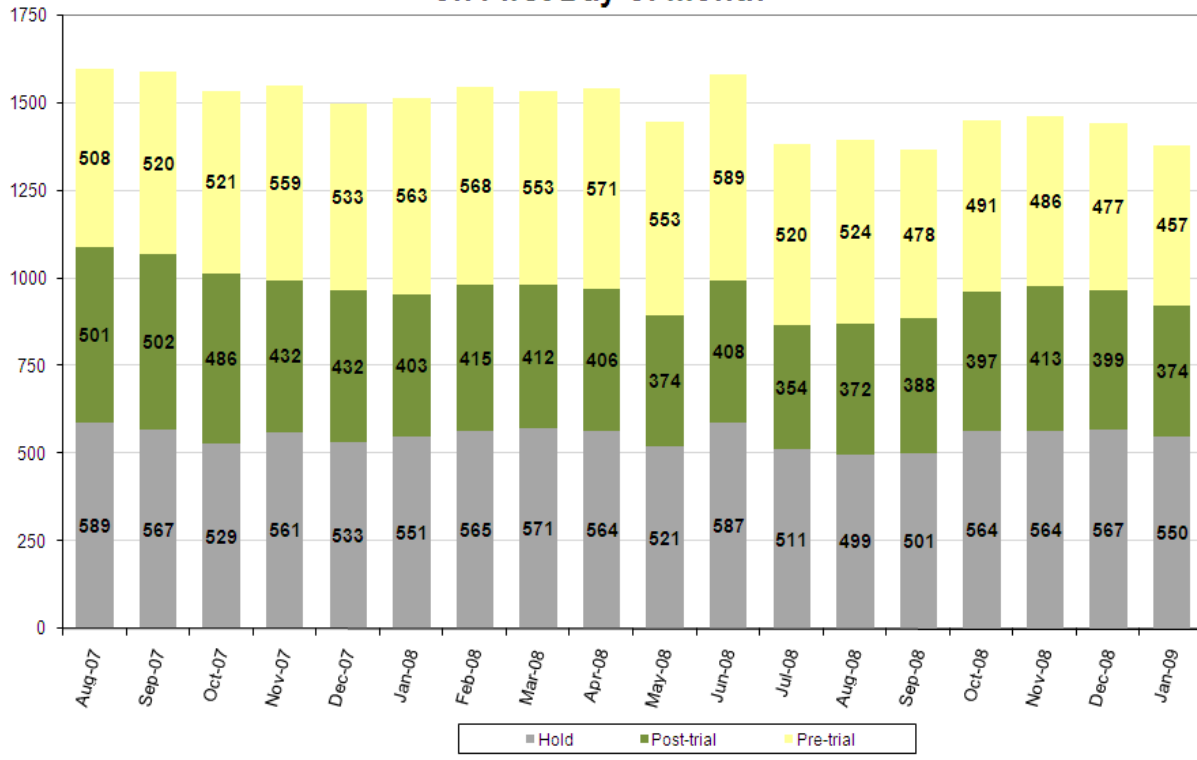


Releases between 12 AM and 8 AM*

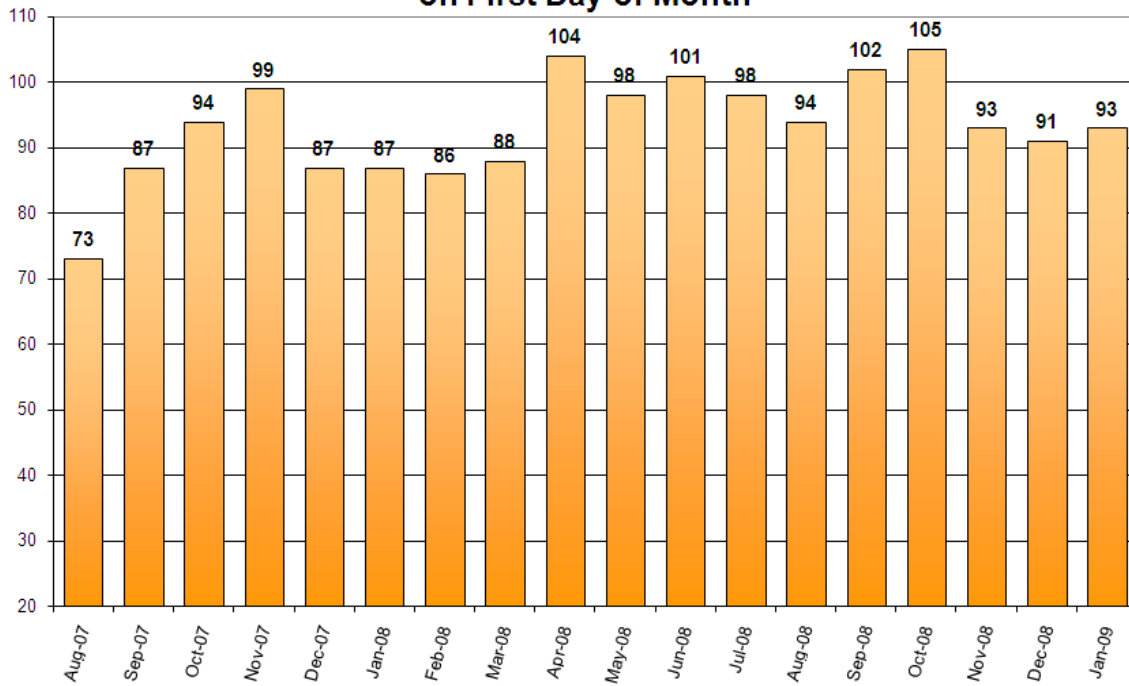


*Court-ordered and recognizance releases not included.

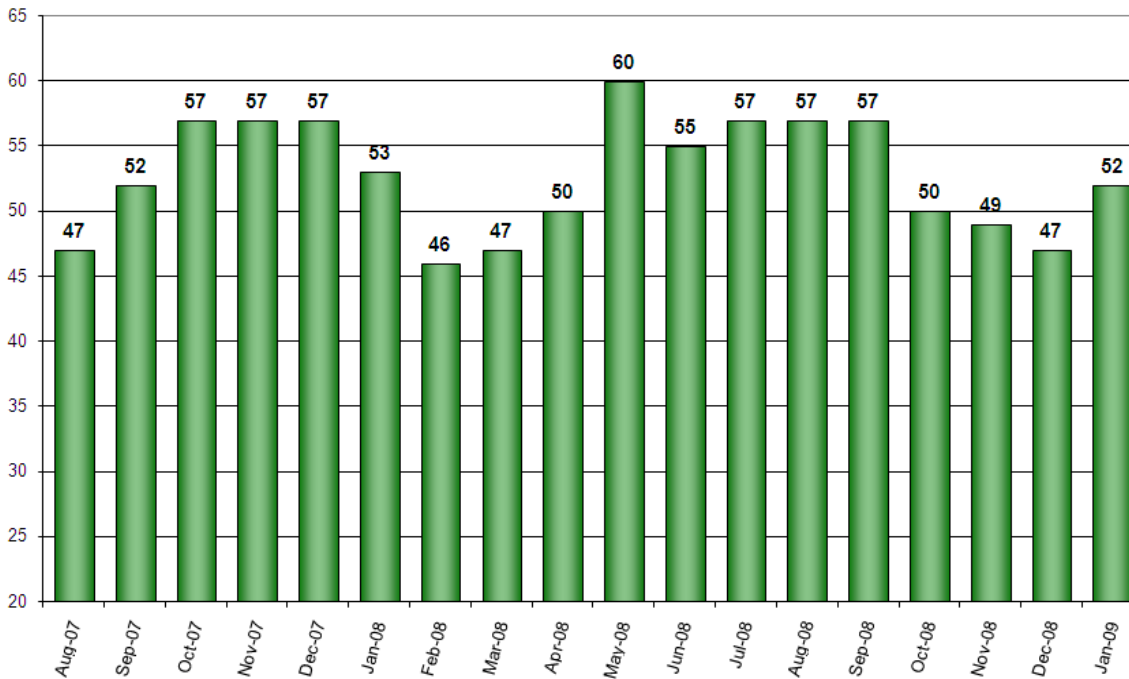
Pre-Trial vs. Post-Trial vs. Holds in Custody on First Day of Month



Count of Persons Held Pre-trial more than 150 Days on First Day of Month



Count of Persons Held Pre-trial on Murder Related Charges on First Day of Month



Count of Pre-trial persons with Murder Related Charges by Length of Stay on First Day of Month

