

Multnomah County Sheriff's Office

**Monthly Jail Statistics Report
October 2008**

NOVEMBER 10, 2008



**Robert Skipper
SHERIFF**

**503 988-4300 PHONE
503 988-4500 TTY**

www.mcso.us/public/

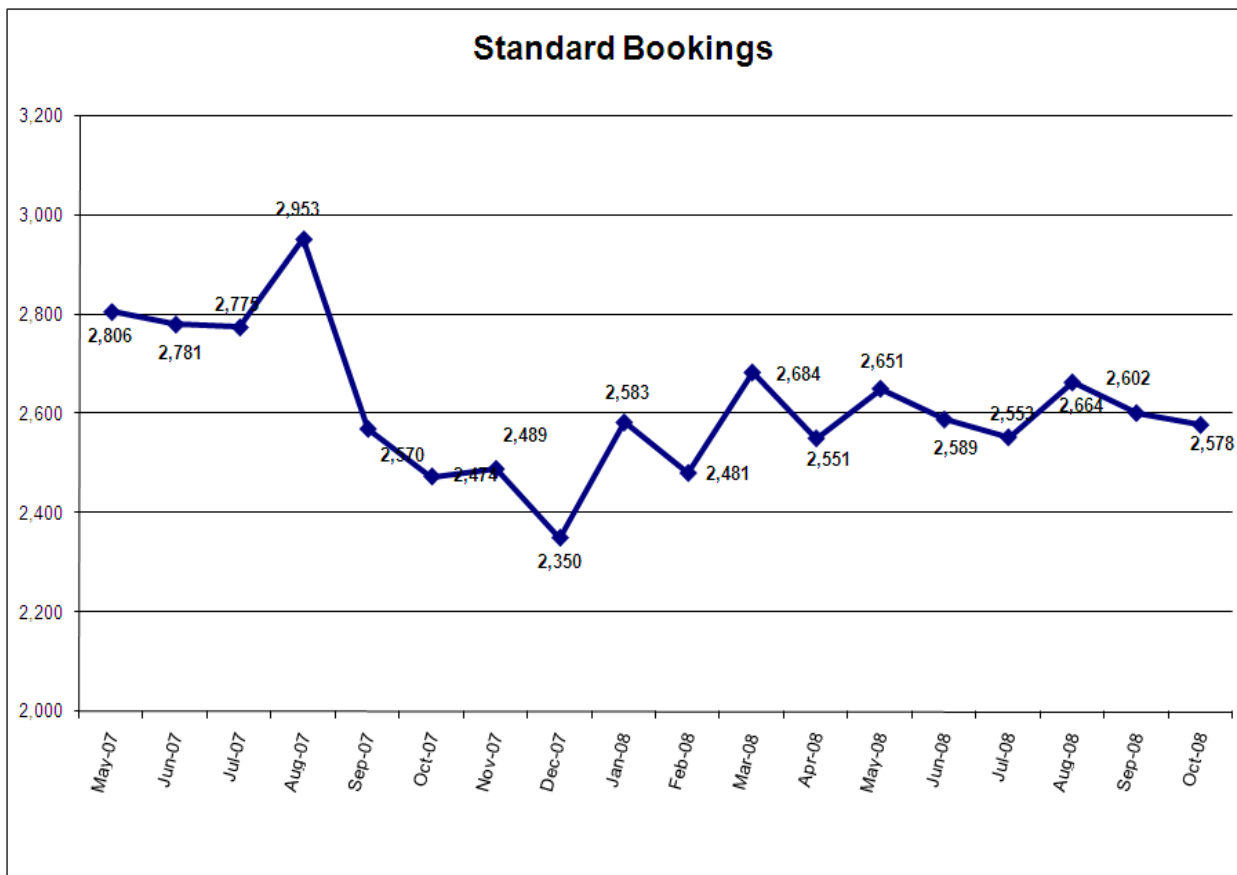
501 SE HAWTHORNE BLVD., Suite 350 • Portland, OR 97214

Multnomah County Monthly Jail Statistics October 2008

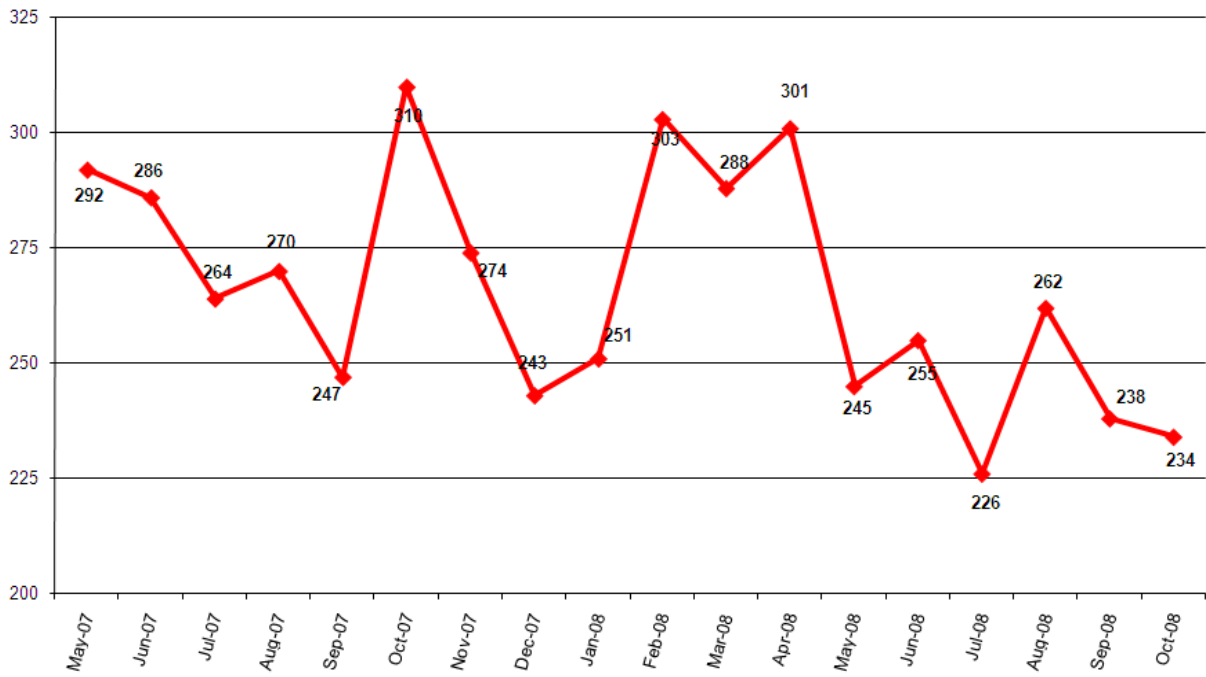
Standard bookings experienced a second month of slight decline in October, dropping to 2578 but remaining comparable to previous months of 2008. TSI and Cite & ID bookings also saw a second month of modest declines, while Portland Project 57 bookings rose slightly over September.

Average length of stay (ALS) for October rose by just over a full day from September to 17.61 days. Average daily population (ADP) reached 1483, its highest level since May 2008. Despite no emergency population releases (EPRs) of inmates in October, the jail did go into emergency release status on 16 days during the month, reaching 97% of capacity or higher. Seventy-six (76) time-served offenders were released between 12 AM and 8 AM during October.

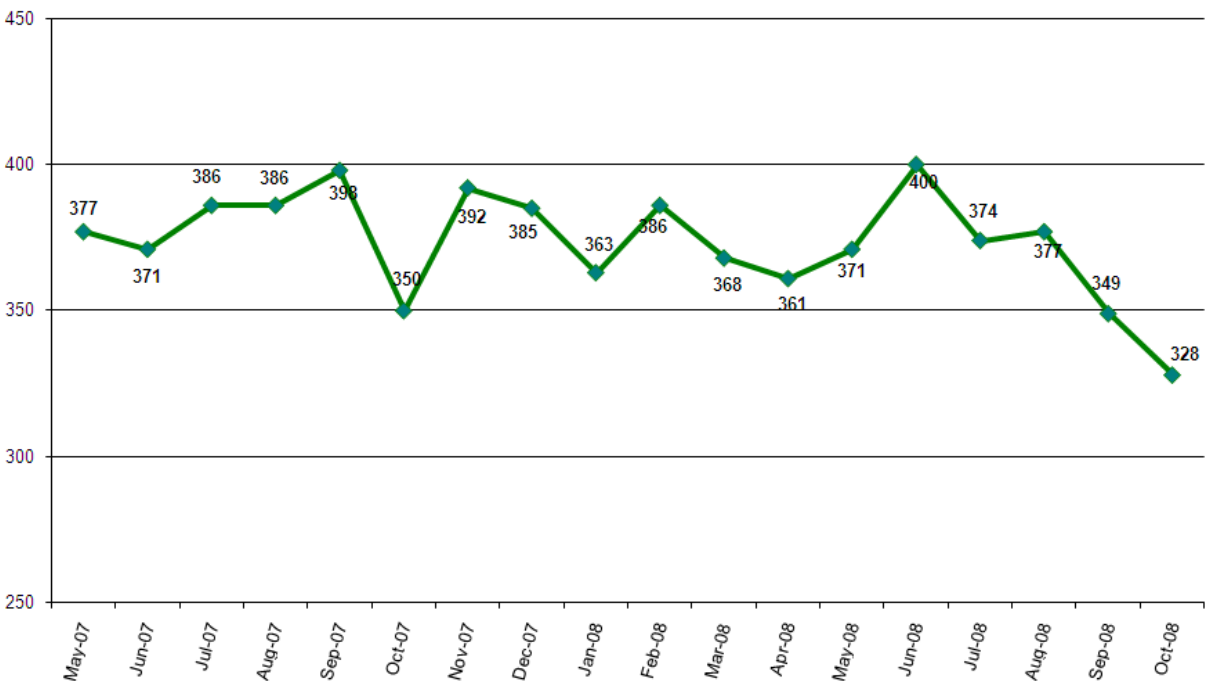
The number of inmates jailed pre-trial, post-trial and for holds remained approximately the same from October first to November first. The count of inmates held pre-trial more than 150 days dropped to 84 on November one compared to 105 on October one. Inmates held pre-trial on murder-related charges totaled 49, with three inmates held for more than two years.



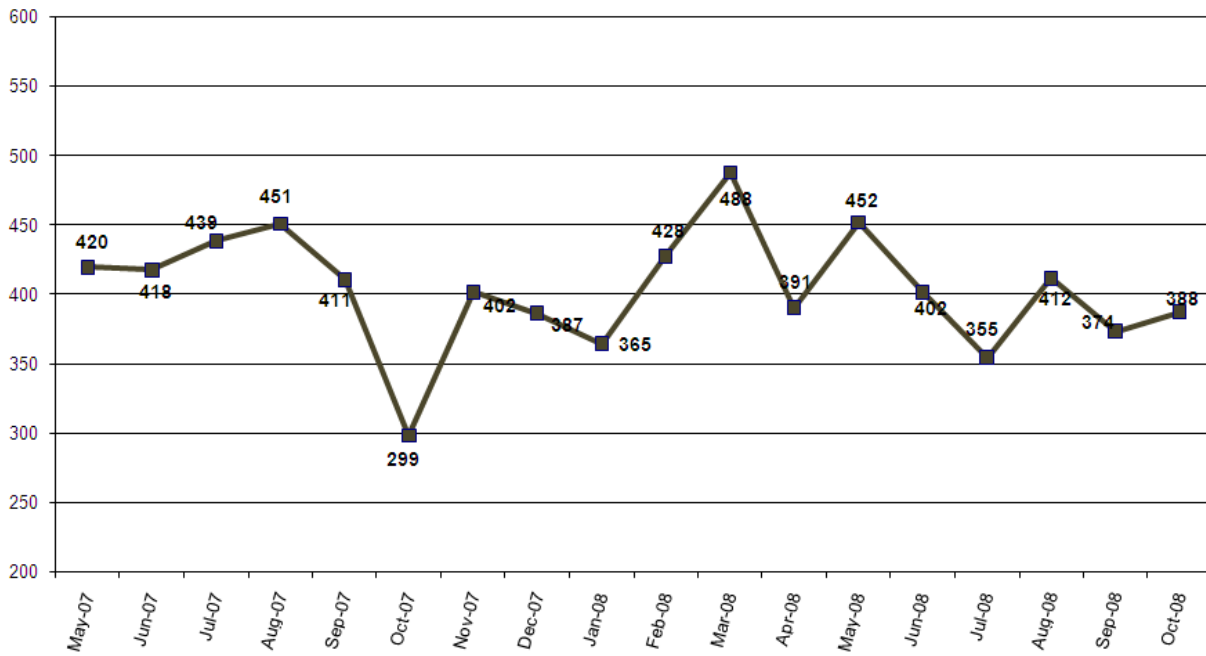
Turn-Self-In (TSI) Bookings



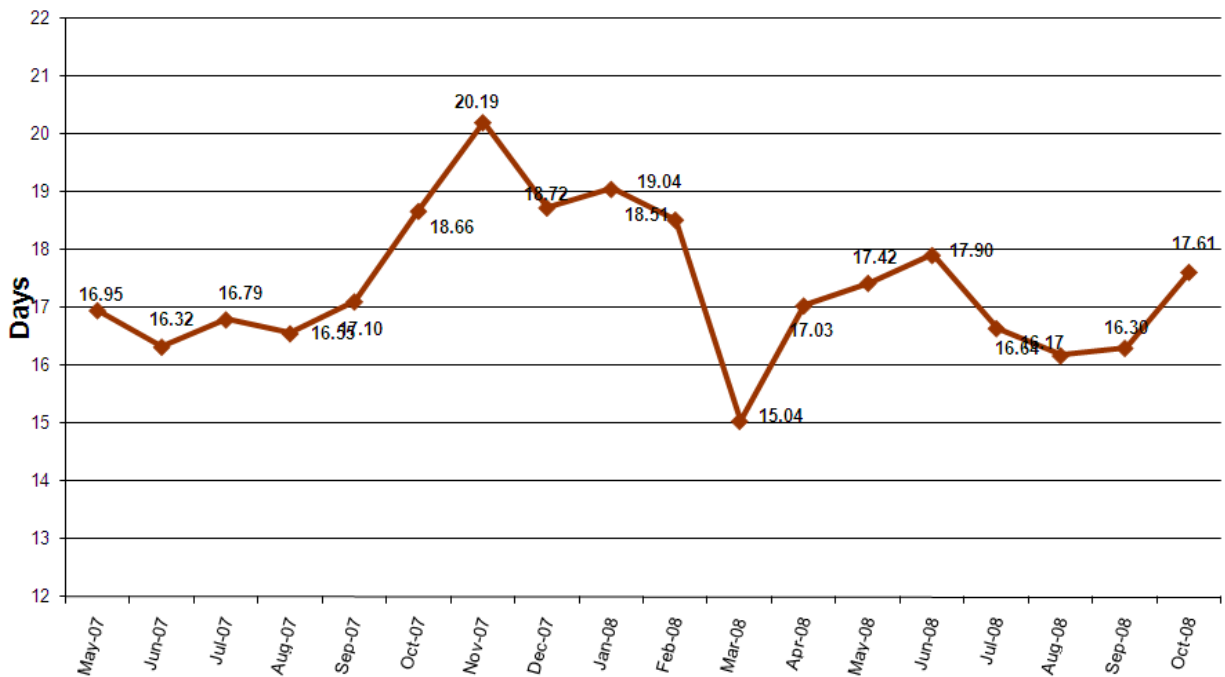
Cite & ID Bookings

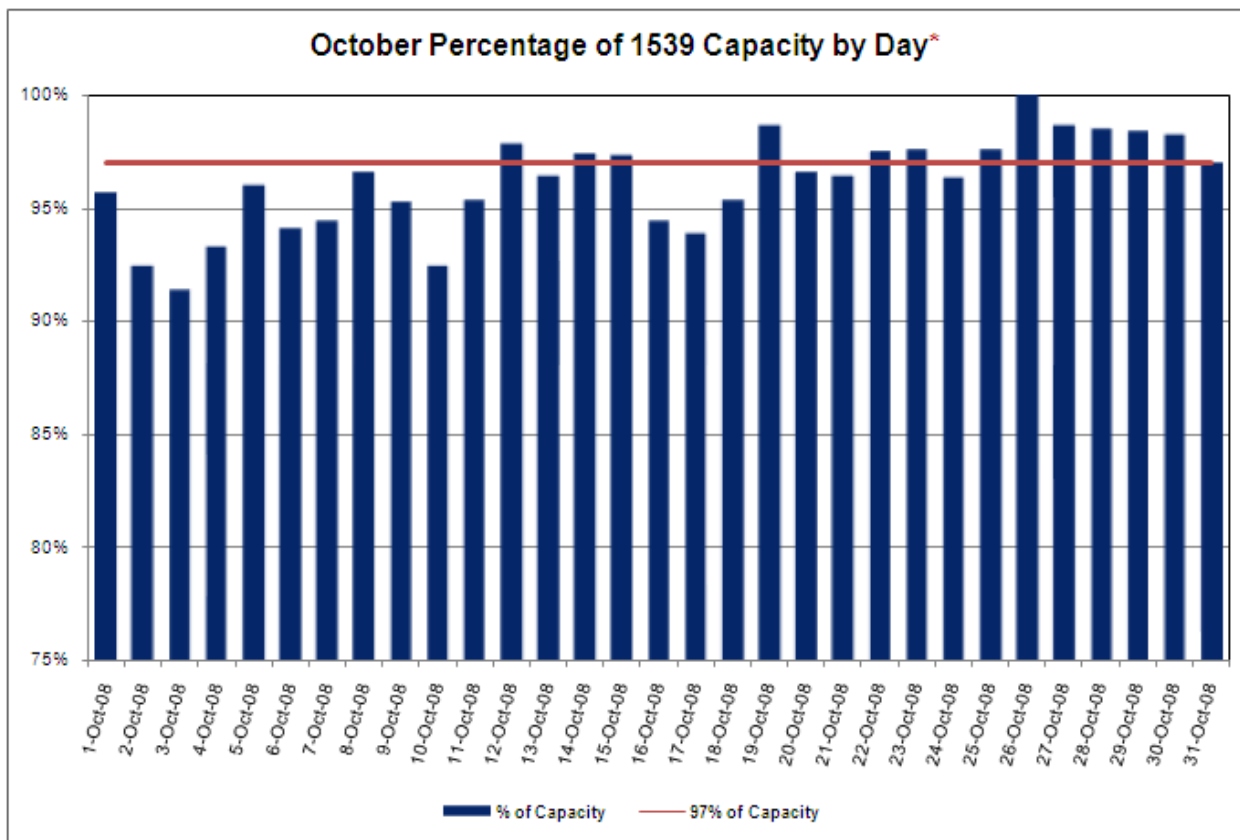
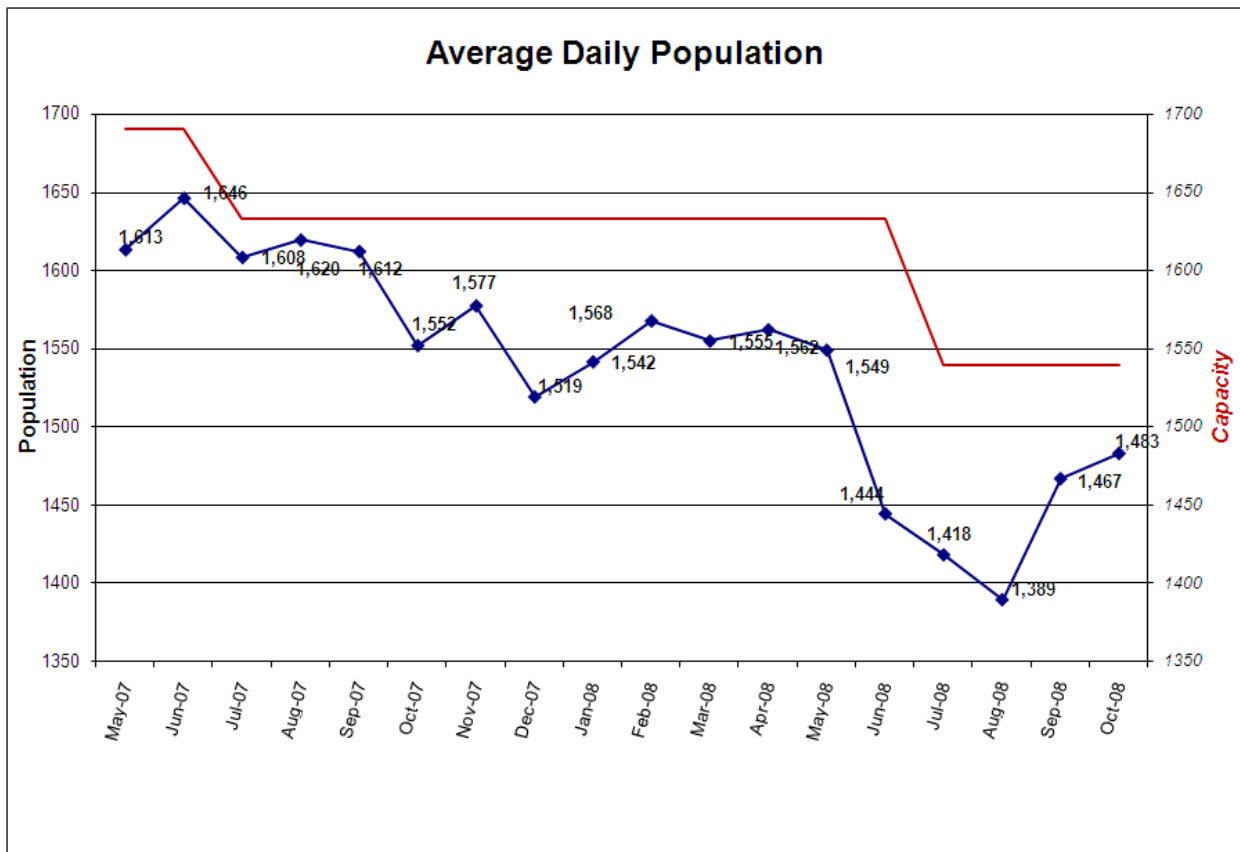


Portland 57 Project - Total Bookings by Month



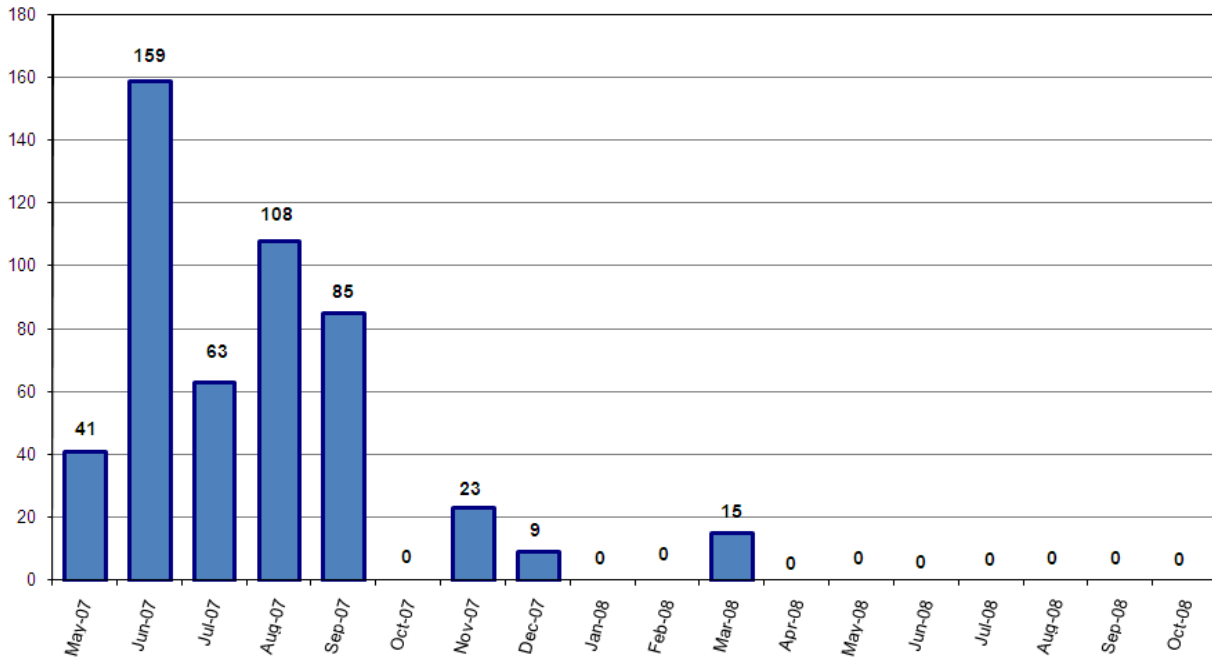
Average Length of Stay (in days)



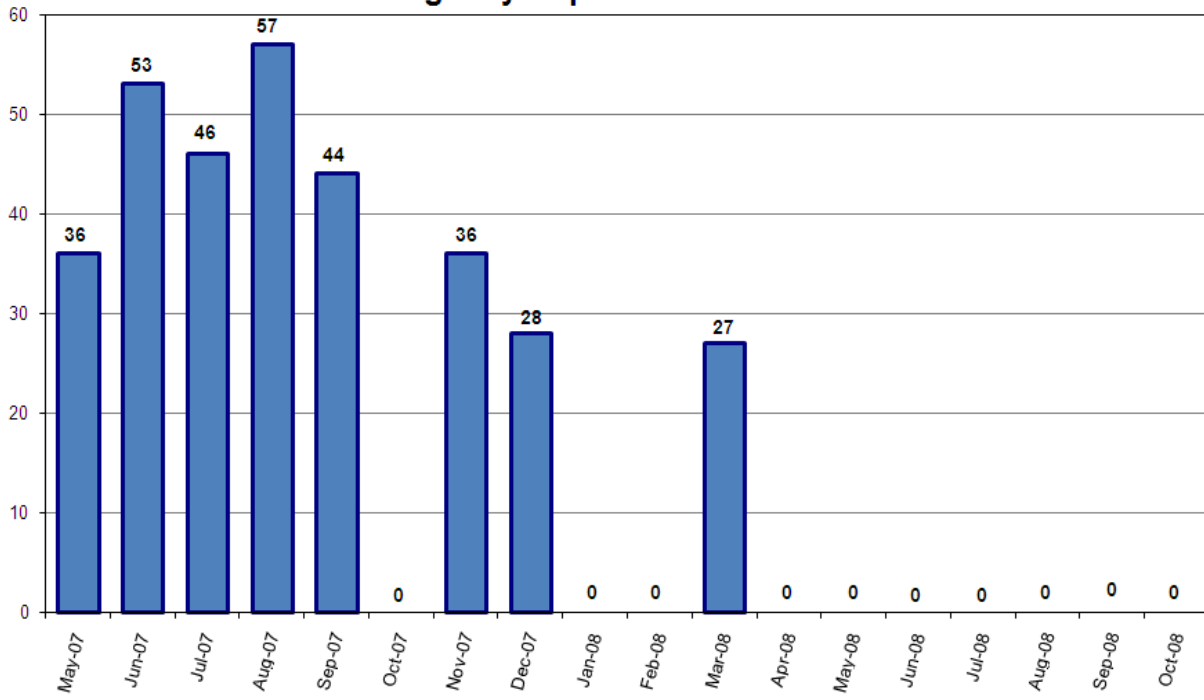


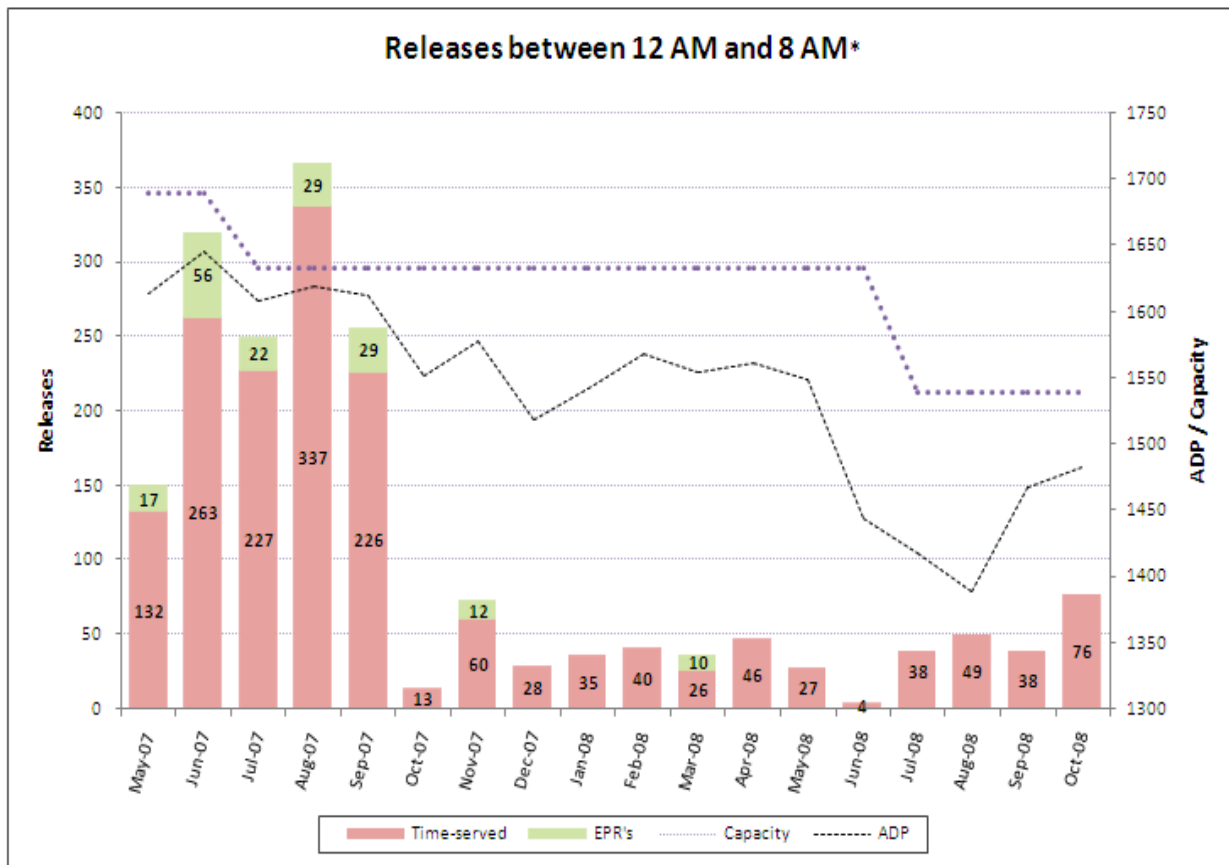
*Red bars indicate days on which EPRs occurred, if any. Note that EPRs do not always or only occur when capacity exceeds the 97% threshold. Efforts are made to balance the population to the demands of the classification system for specific types of jail beds and balance the space needs for male or female inmates. Additionally, jail capacity varies throughout the day, with these capacity calculations based on 10PM population counts.

Emergency Population Releases by Month

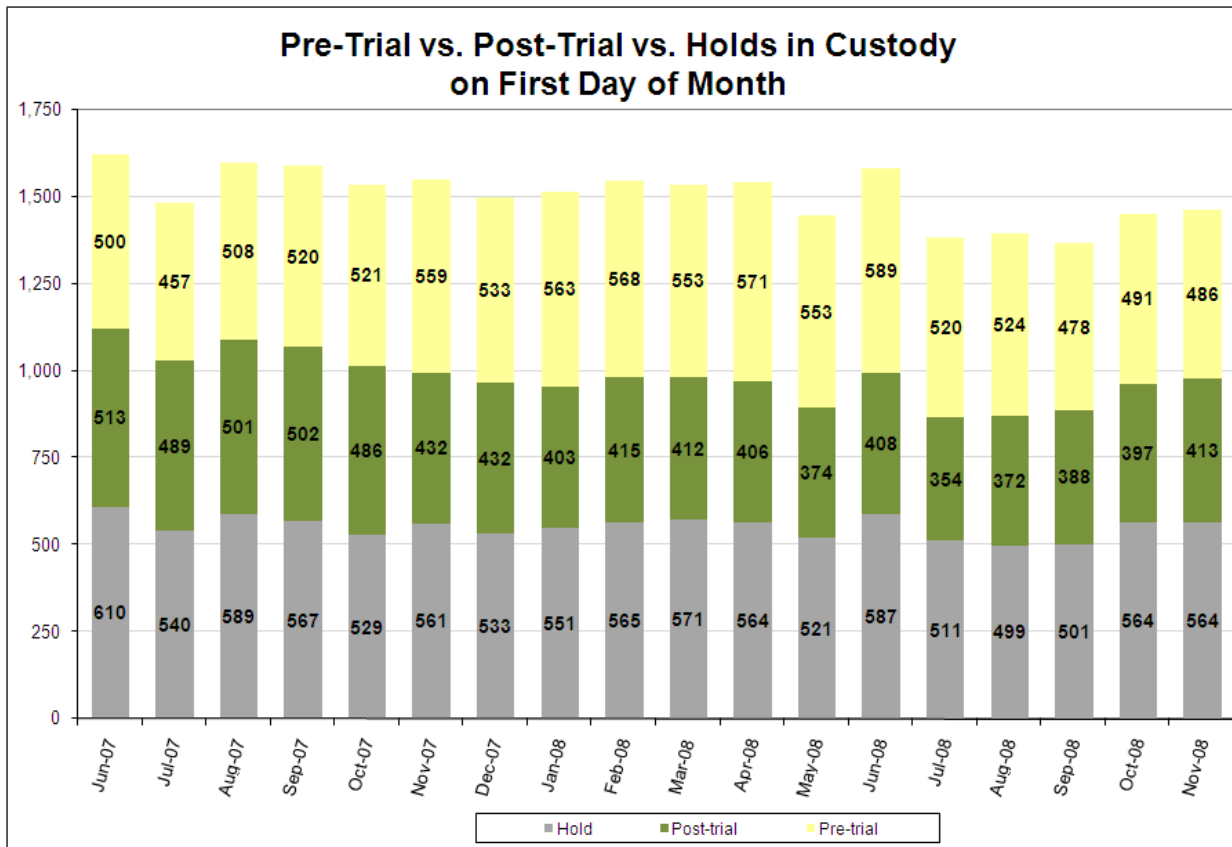


Monthly Average Score of Emergency Population Releases

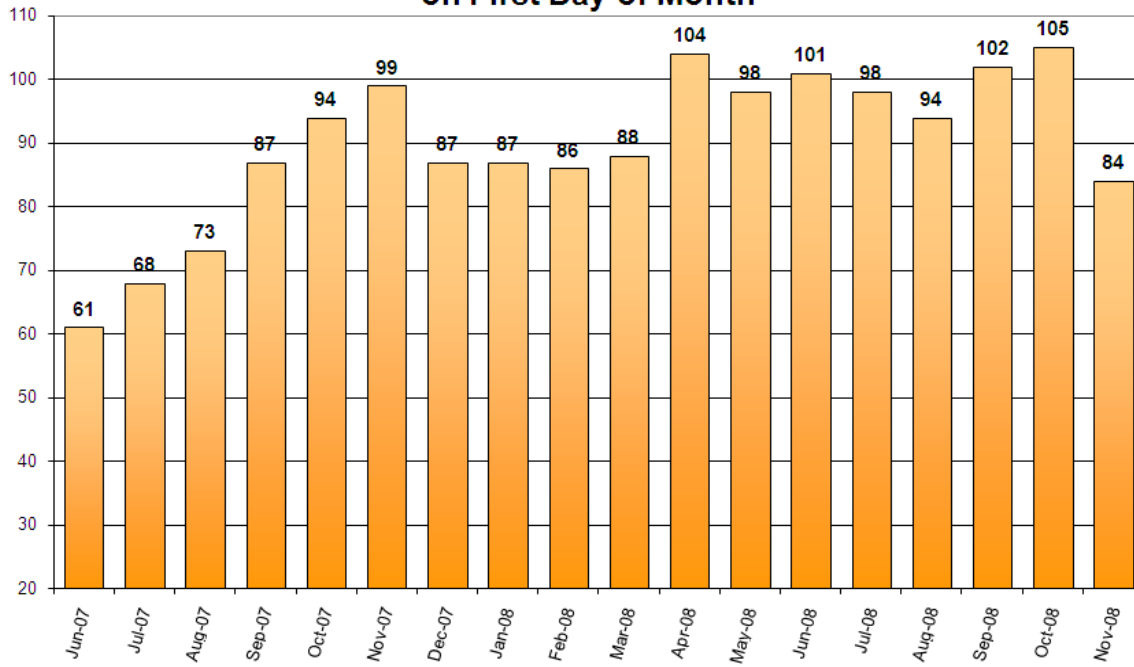




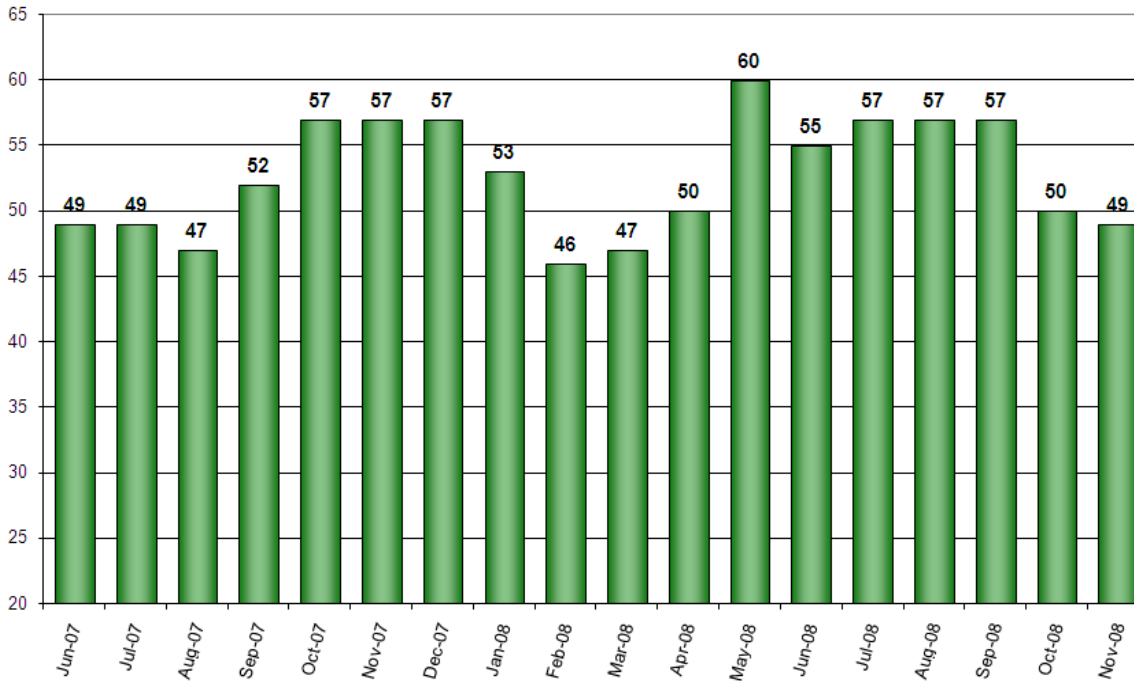
*Court-ordered and recognizance releases not included.



Count of Persons Held Pre-trial more than 150 Days on First Day of Month



Count of Persons Held Pre-trial on Murder Related Charges on First Day of Month



Count of Pre-trial persons with Murder Related Charges by Length of Stay on First Day of Month

