

Multnomah County Sheriff's Office

Monthly Jail Statistic Report
November 2007

JANUARY 2, 2008



**BERNIE GIUSTO
SHERIFF**

503 988-4300 PHONE

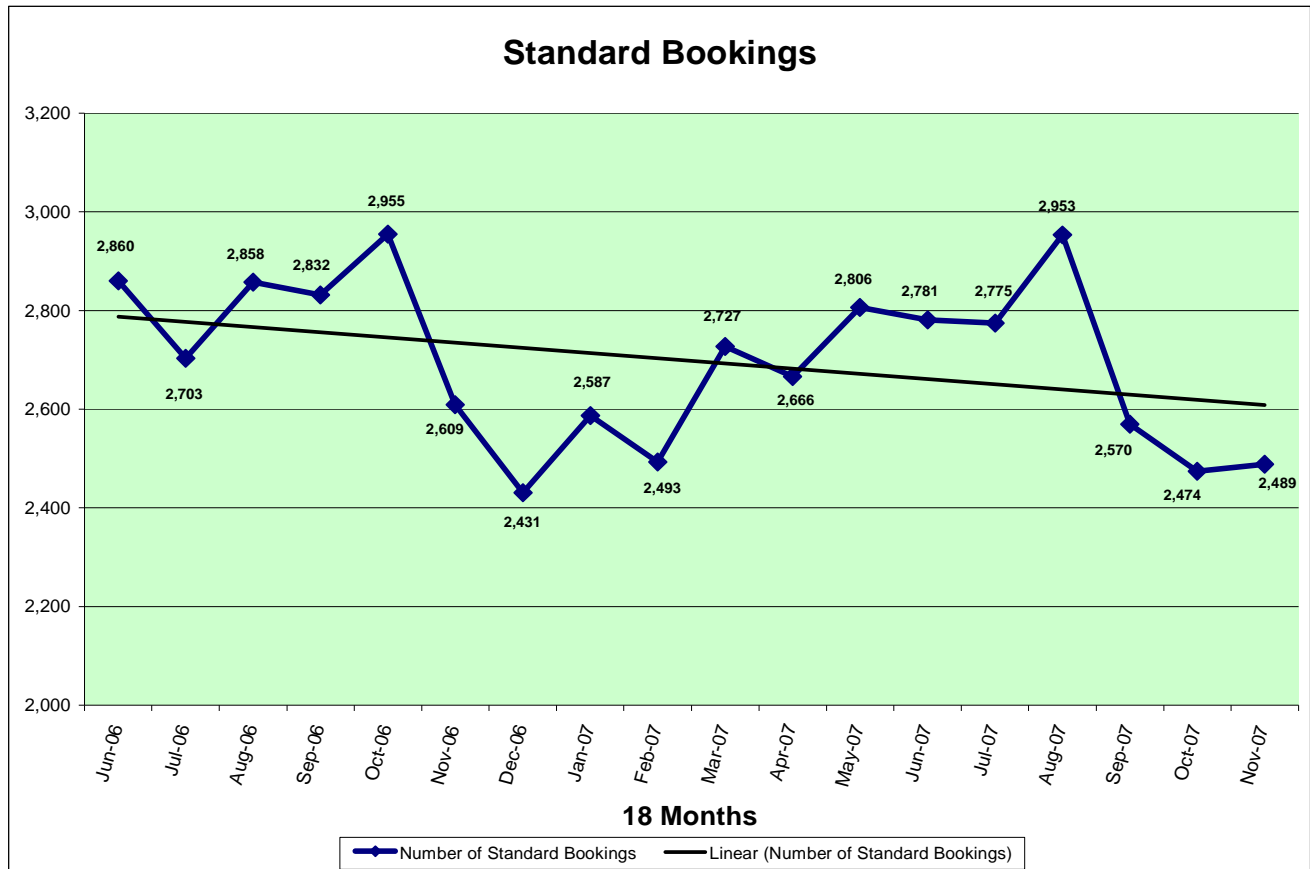
503 988-4500 TTY

www.sheriff-mcso.org

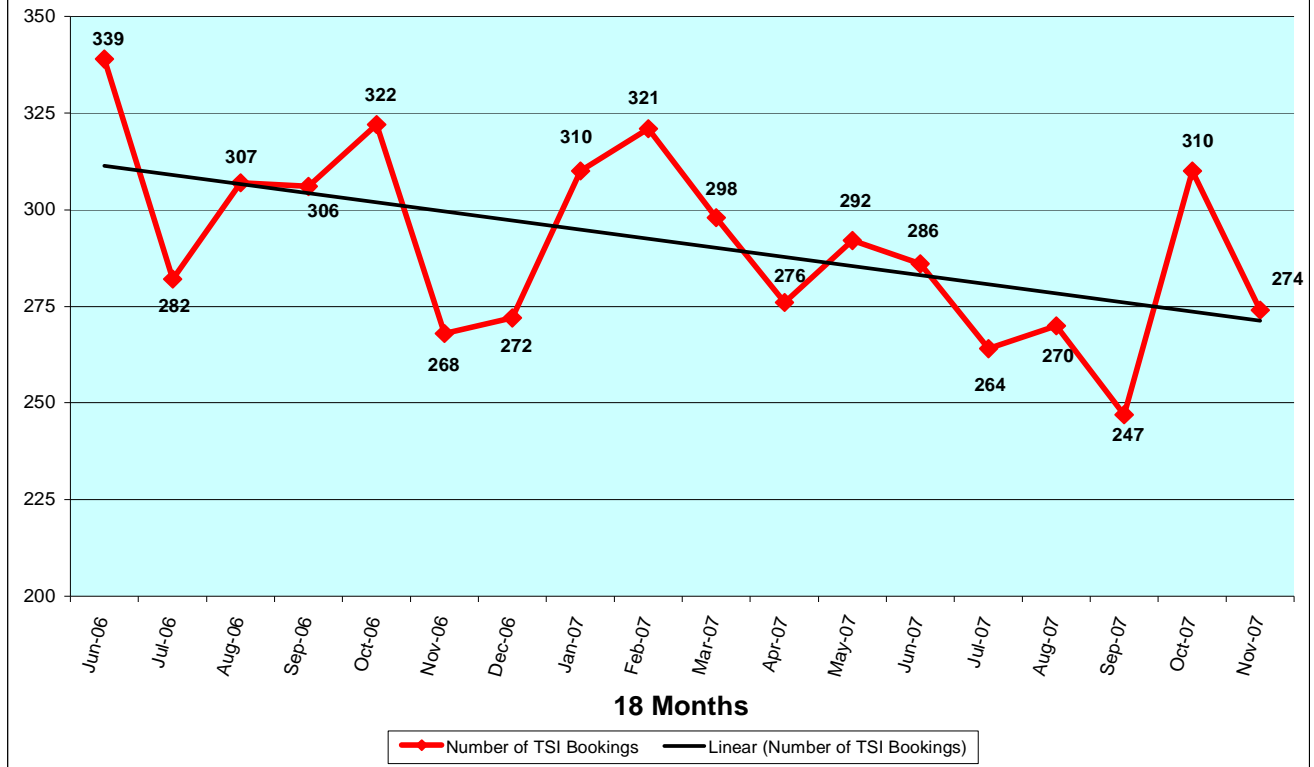
501 SE HAWTHORNE BLVD., Suite 350 • Portland, OR 97214

Multnomah County Monthly Jail Statistics November 2007

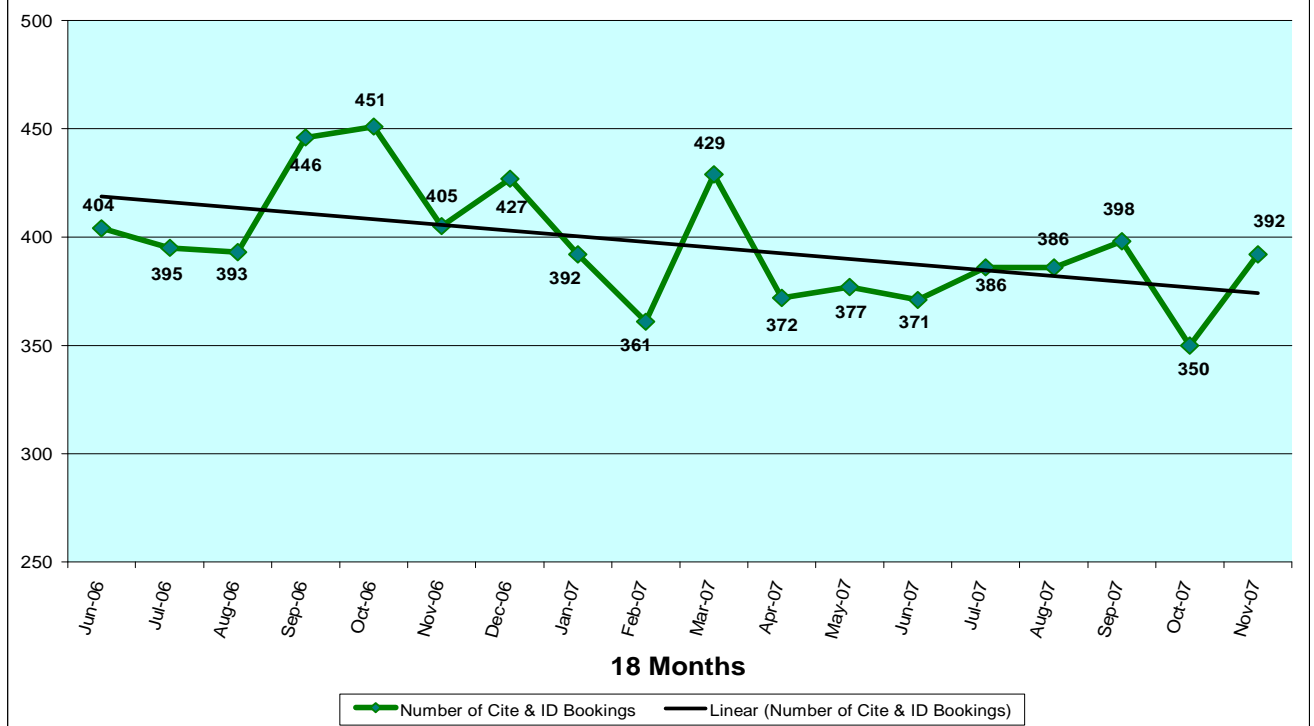
November ended with 2,489 Standard Bookings; almost equal to October's Standard Bookings of 2,474 and slightly lower, 4.6%, than last year's total of 2,609. Turn Self In bookings went down by 11.6% ending at 274 in November from October's 310 total. Cite & IDs continued to hover around 400, totaling 392 for November; just 3.2% lower than one year ago when Cite & IDs totaled 405. Average Length of Stay (ALS) continues to increase, reaching 20.19 days during November; the highest average since January 2004. Average Daily Population (ADP) increased by 5.5% for November, totaling 1,577.43. ADP one year ago was 1,669.30 and Jail Capacity was 1,690. Jail Capacity is now 1,633. There were 23 Emergency Population Releases during November, all unsentenced females. Portland Project 57 Bookings totaled 402 for November; a 25% increase from October's total of 299 and a 29% increase from one year ago when Project 57 bookings totaled 286. The Average number of exclusive U.S. Marshall Prisoners for November was 134.7.



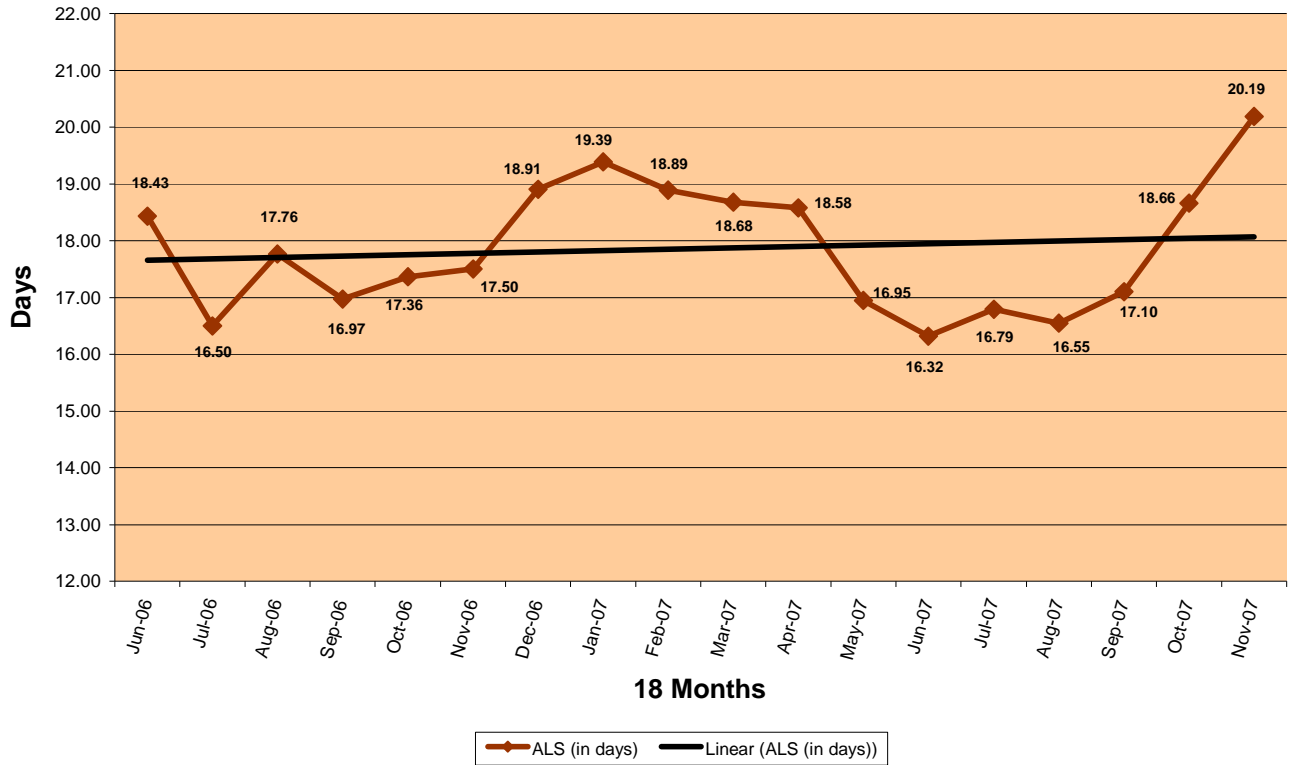
Turn-Self-In (TSI) Bookings



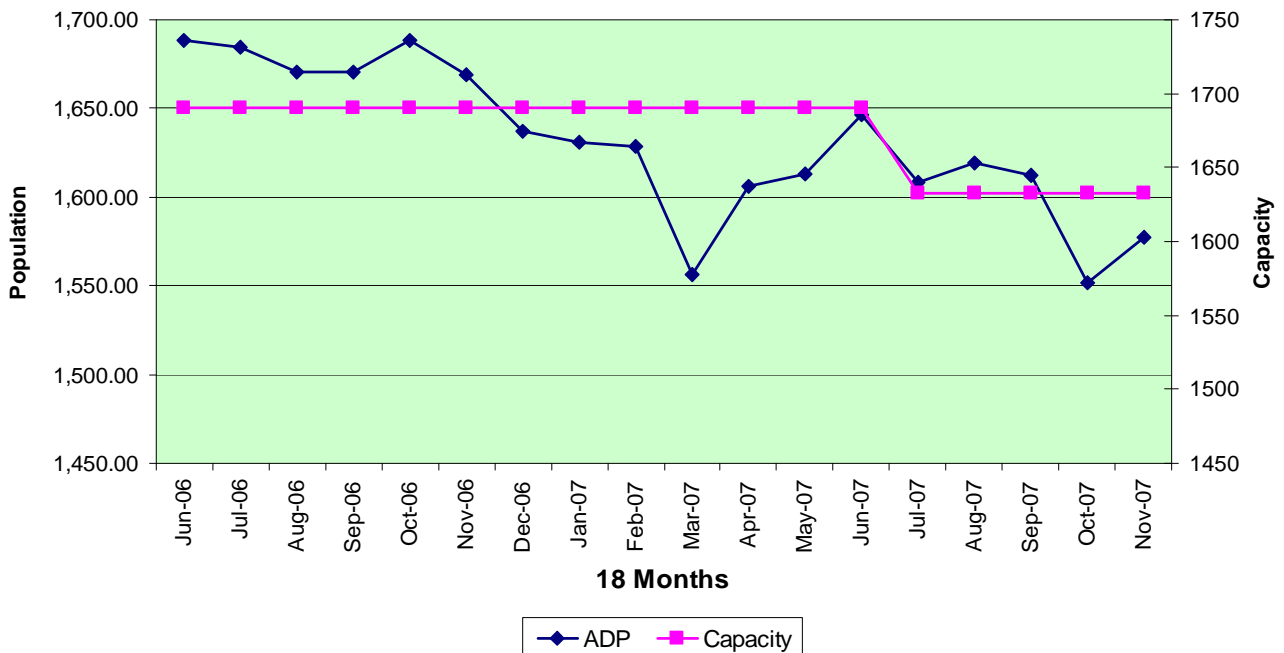
Cite & ID Bookings



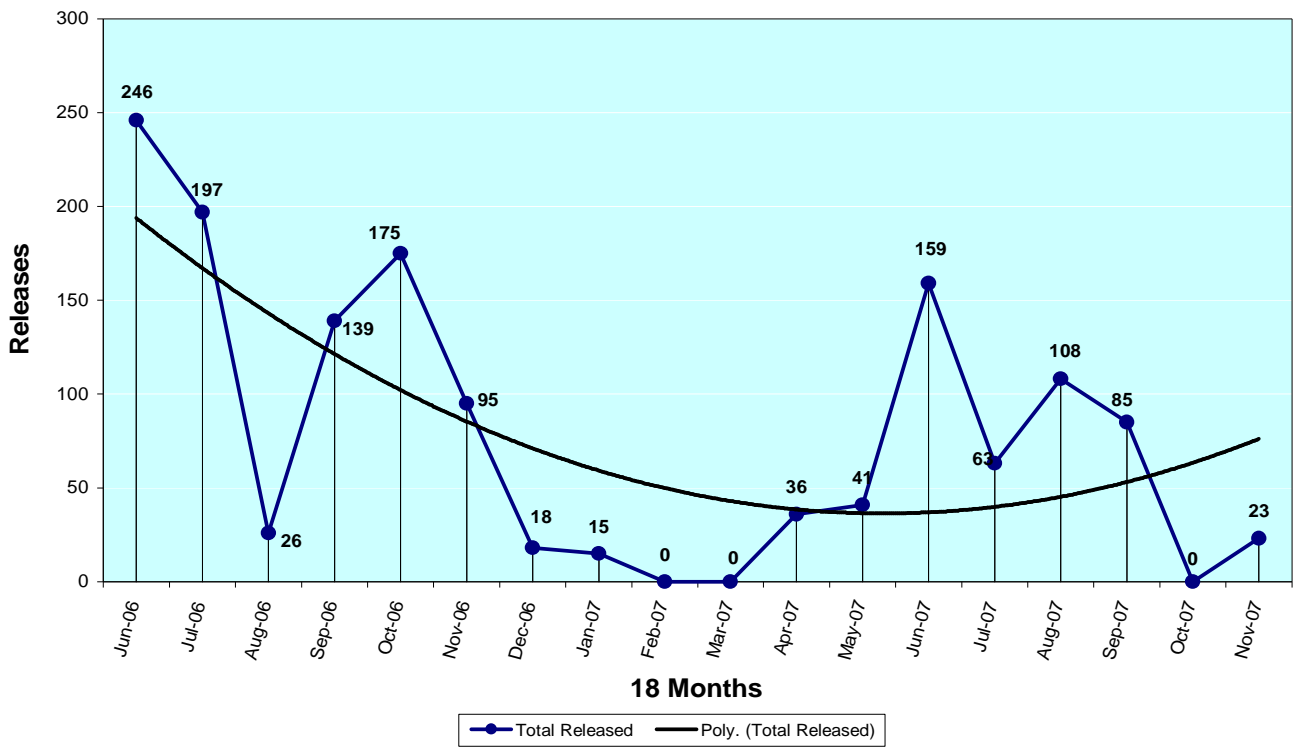
Average Length of Stay



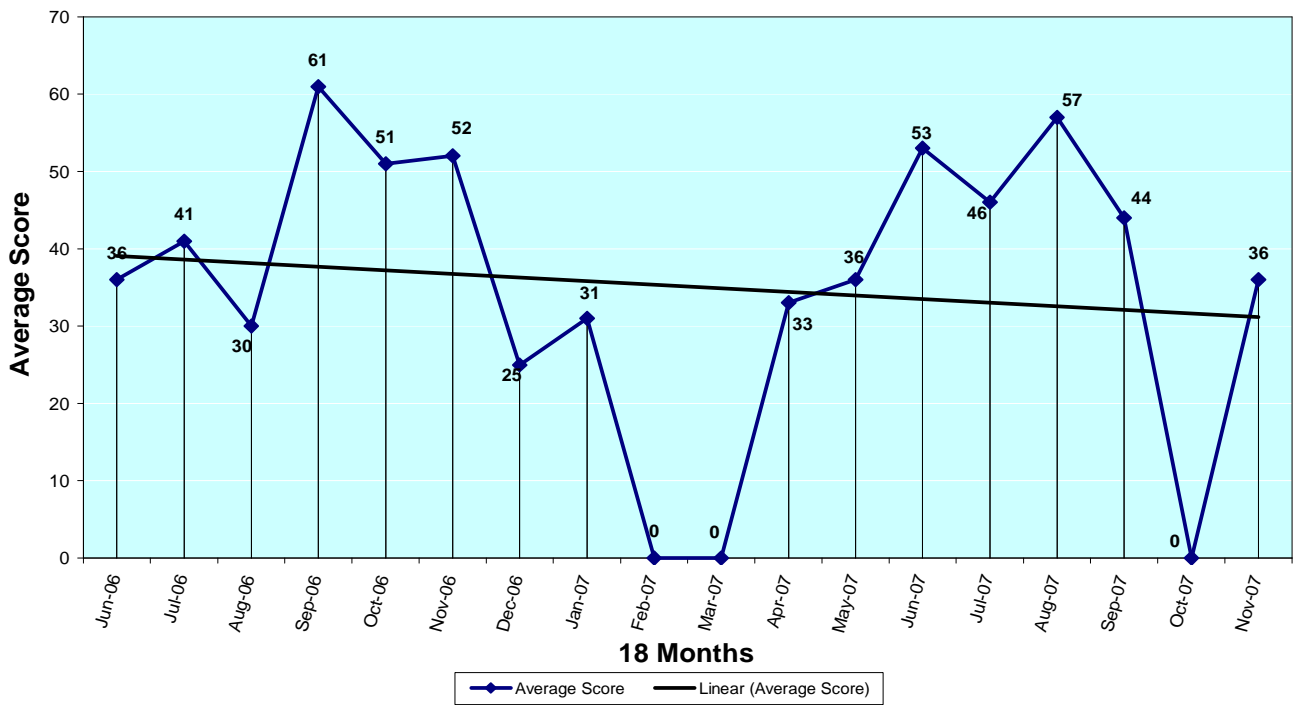
Average Daily Population



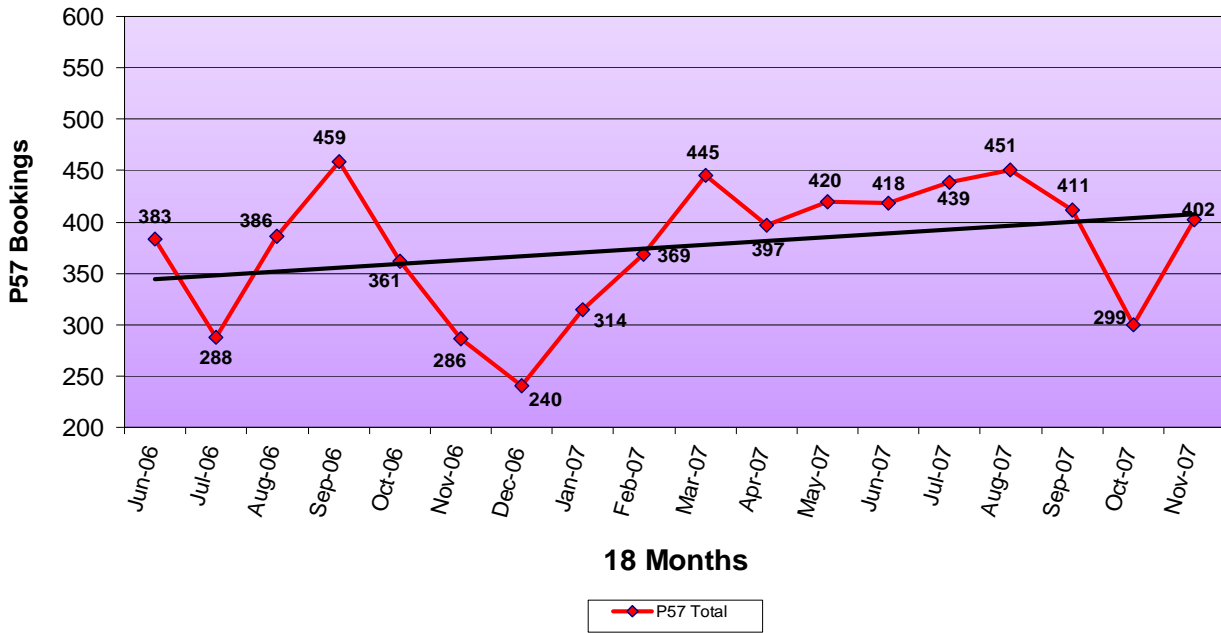
Emergency Population Releases by Month



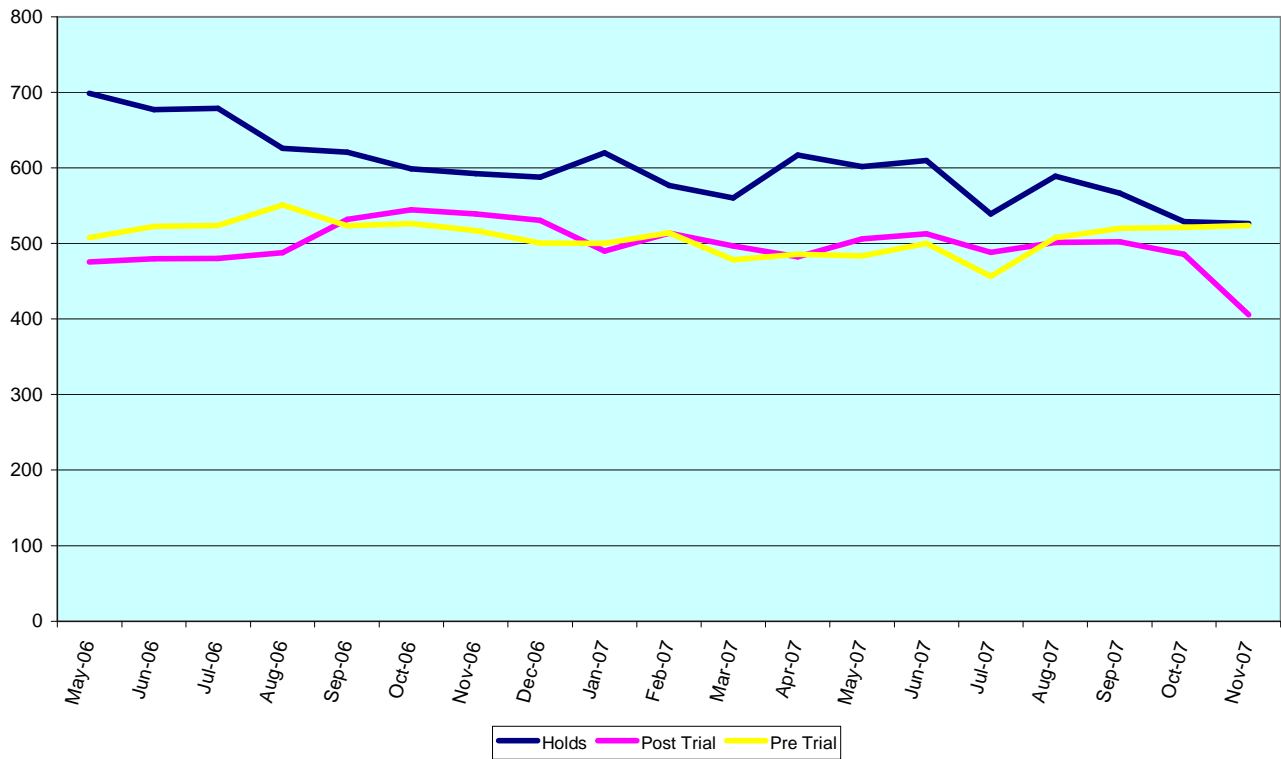
Monthly Average Score of Emergency Population Releases



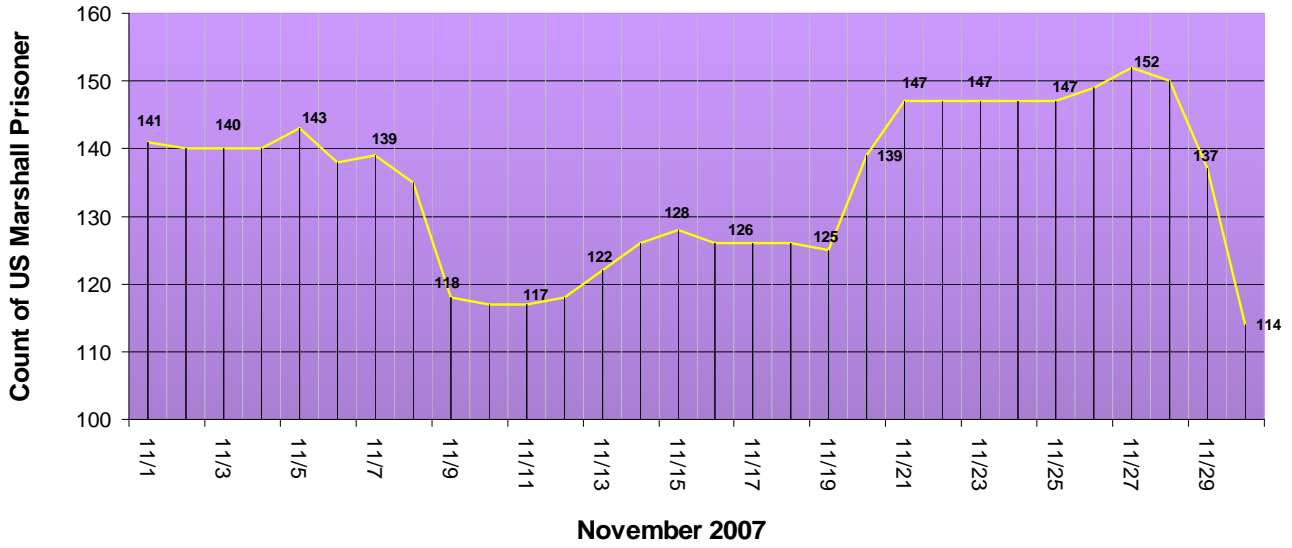
Portland 57 Project - Total Bookings by Month



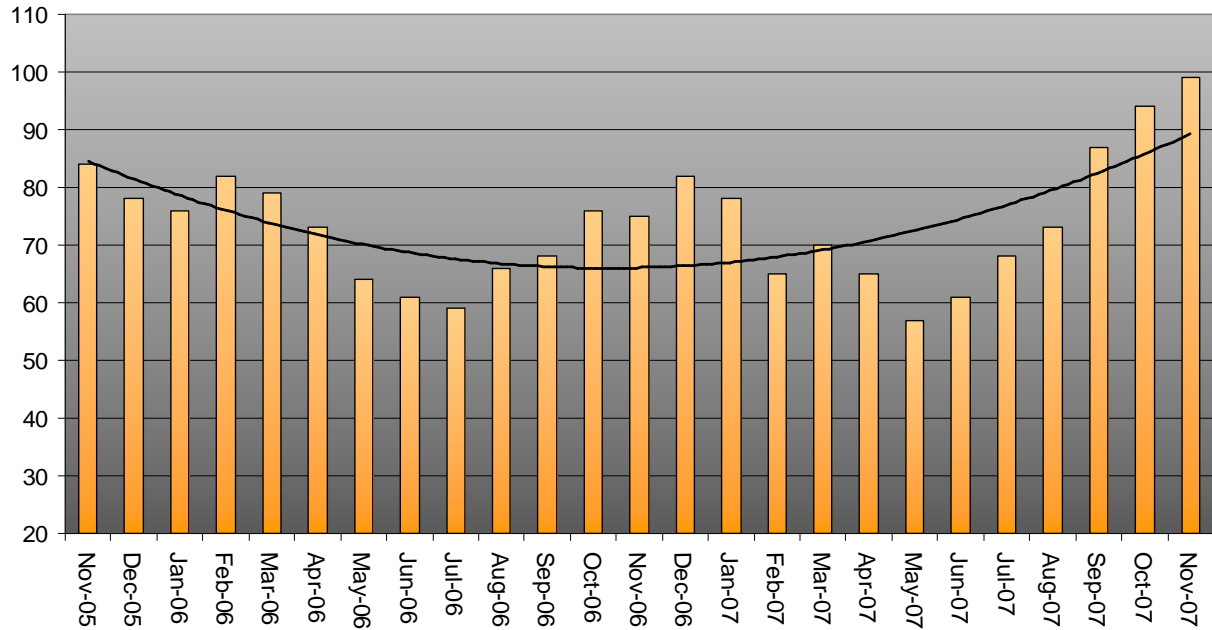
Pre-Trial vs. Post-Trial vs. Holds in Custody



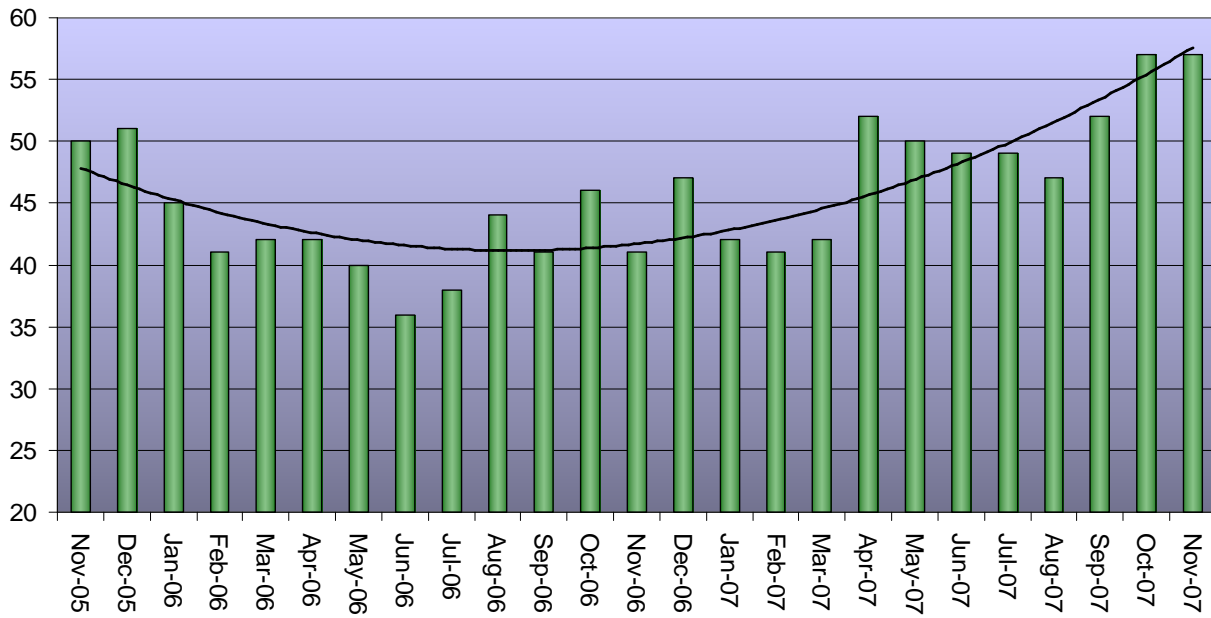
Daily Count of Exclusive U.S. Marshall Prisoners



Count of Persons Held Pre-sentence more than 150 Days



Count of Persons Held Pre-sentence on Murder Related Charges



Count of Pre-sentence persons with Murder Related Charges by Length of Stay on 1st Day of the Month

