

Multnomah County Sheriff's Office

Monthly Jail Statistic Report
July 2007

AUGUST 9, 2007



**BERNIE GIUSTO
SHERIFF**

503 988-4300 PHONE

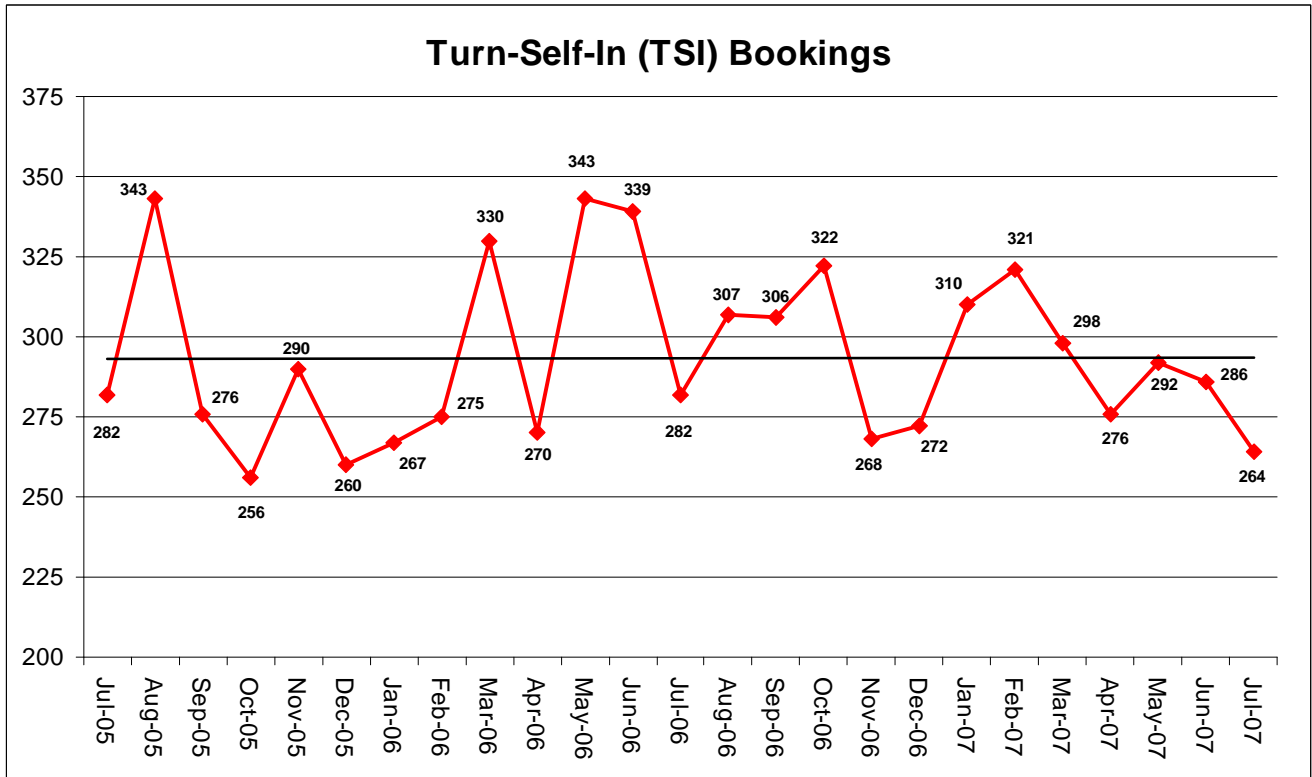
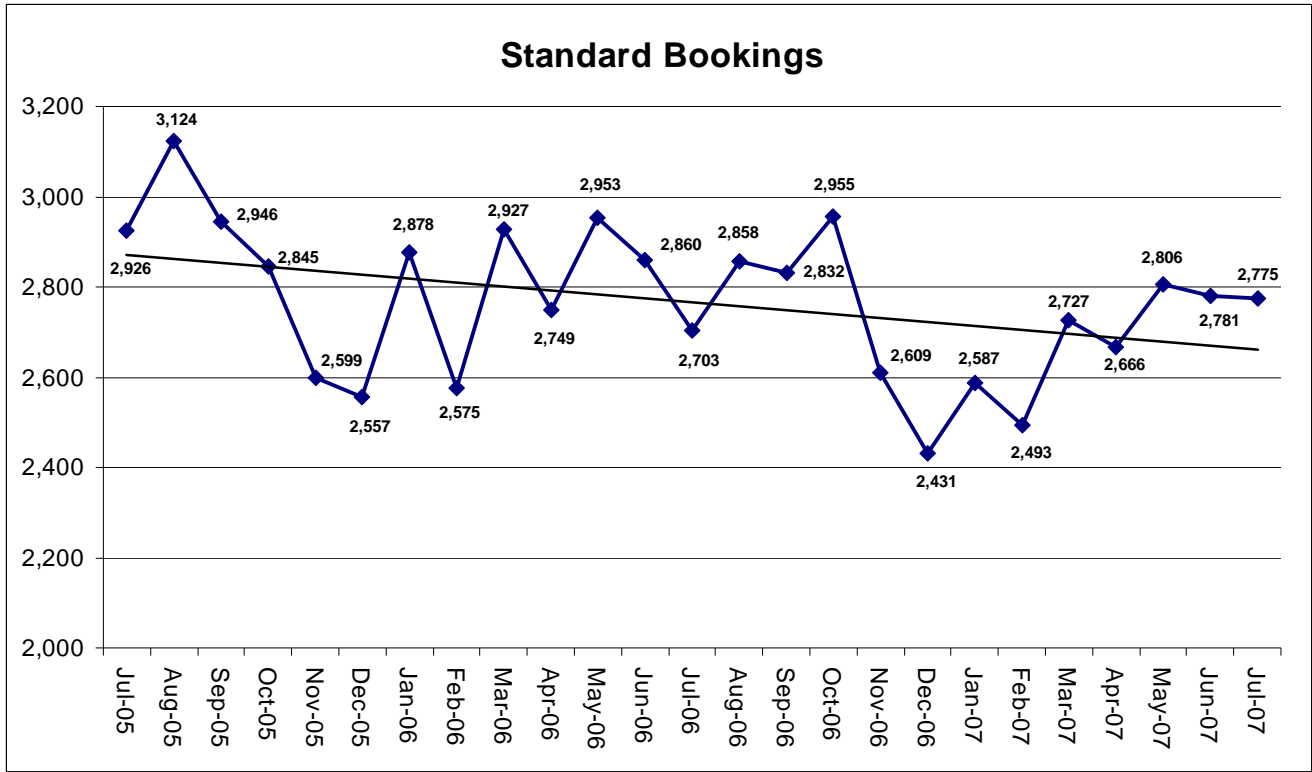
503 988-4500 TTY

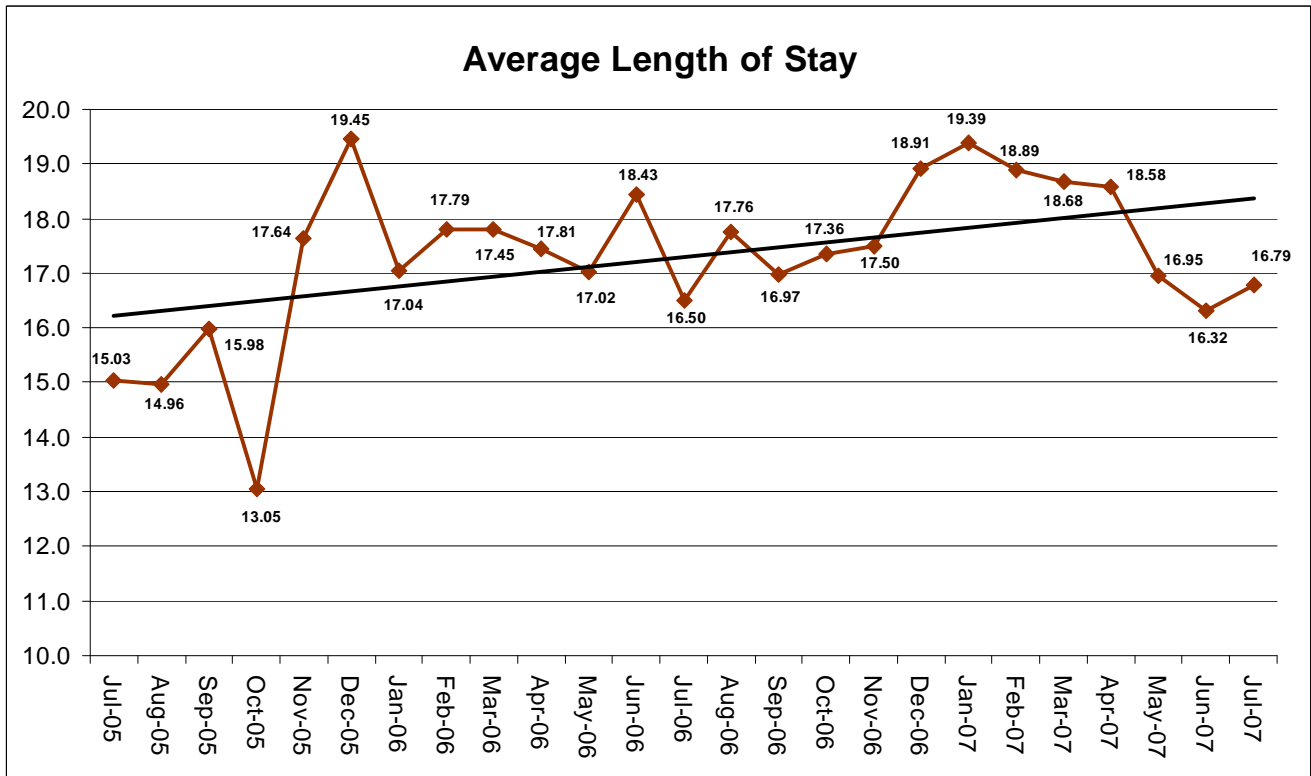
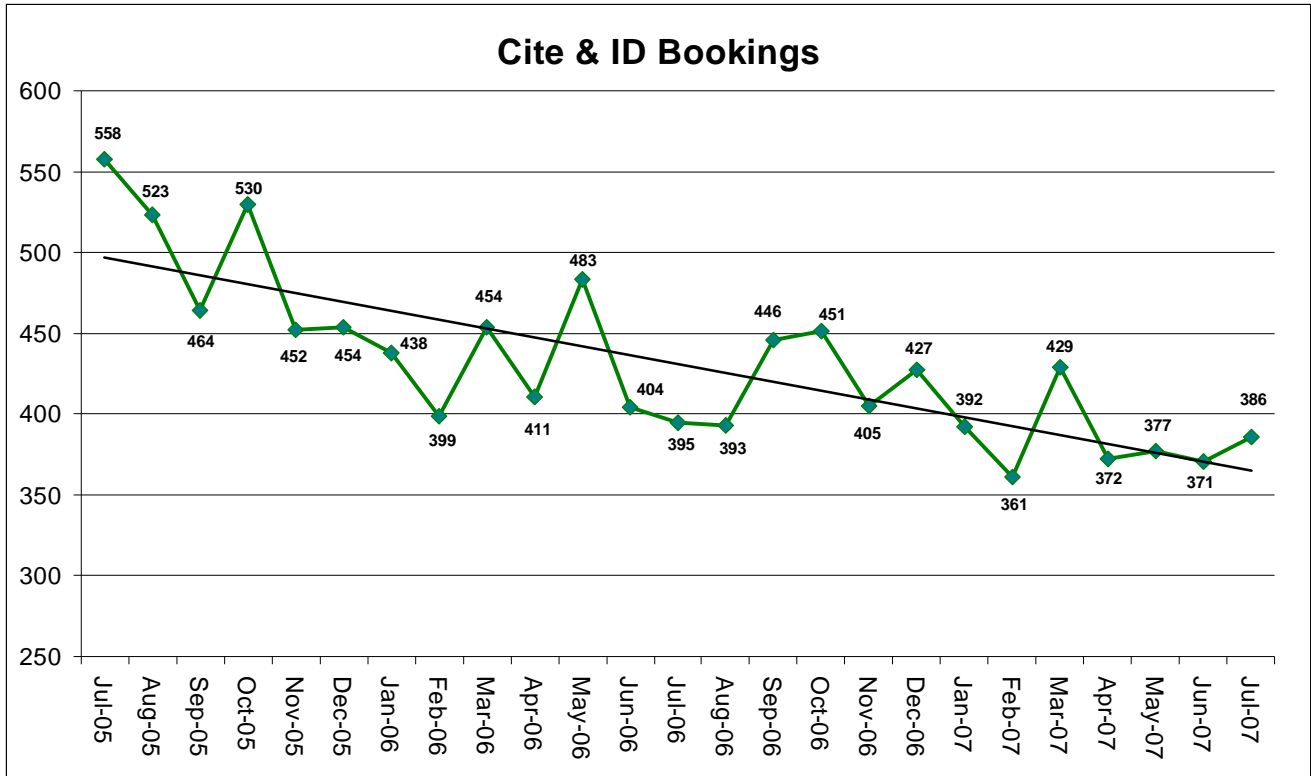
www.sheriff-mcso.org

501 SE HAWTHORNE BLVD., Suite 350 • Portland, OR 97214

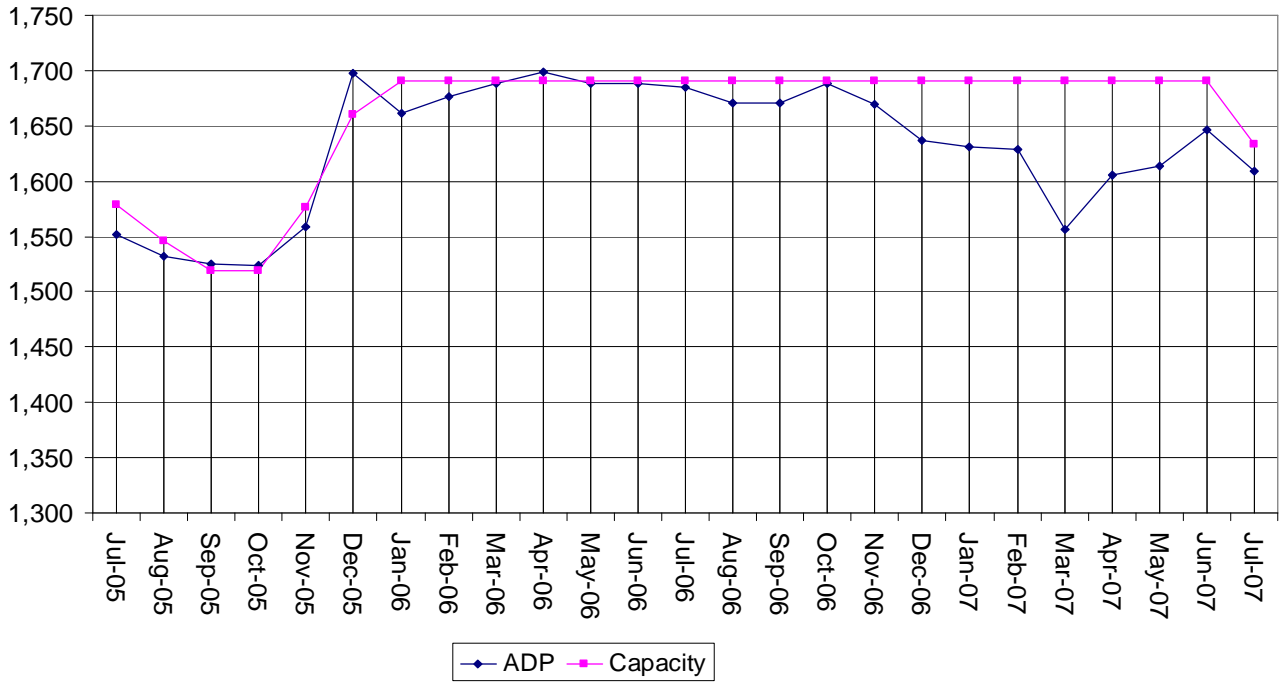
**Multnomah County Monthly Jail Statistics
July 2007**

The month of July ended with 2,775 Standard Bookings. This is similar to June 2007. It is a 2.6% increase from July of 2006 when there were 2,703 Standard Bookings. There were a total of 386 Cite and ID's booked; this is 3.8% increase from June when there were 371. The Average Length of Stay (ALS) for July of 2007 was 16.79 days. ALS has been relatively stable for the past three months. The Average Daily Population (ADP) for July is 1,608. This is a 2.5% decrease from July 2006. The overall jail capacity changed in July from 1,690 to 1,633 due to budget reductions. Emergency Population Releases occurred seven times for the month of July. A total of 63 individuals were released early. This is a significant decrease from the previous month of June where 159 were released. The average Emergency Population Release score was 46. Bookings for the Portland Project 57 totaled 439 for July. The average number of exclusive U.S. Marshall Prisoners for July is 143. Three charts have been added to the monthly report which conveys numbers of persons in custody pre-sentence for more than 150 days and also on murder related charges.

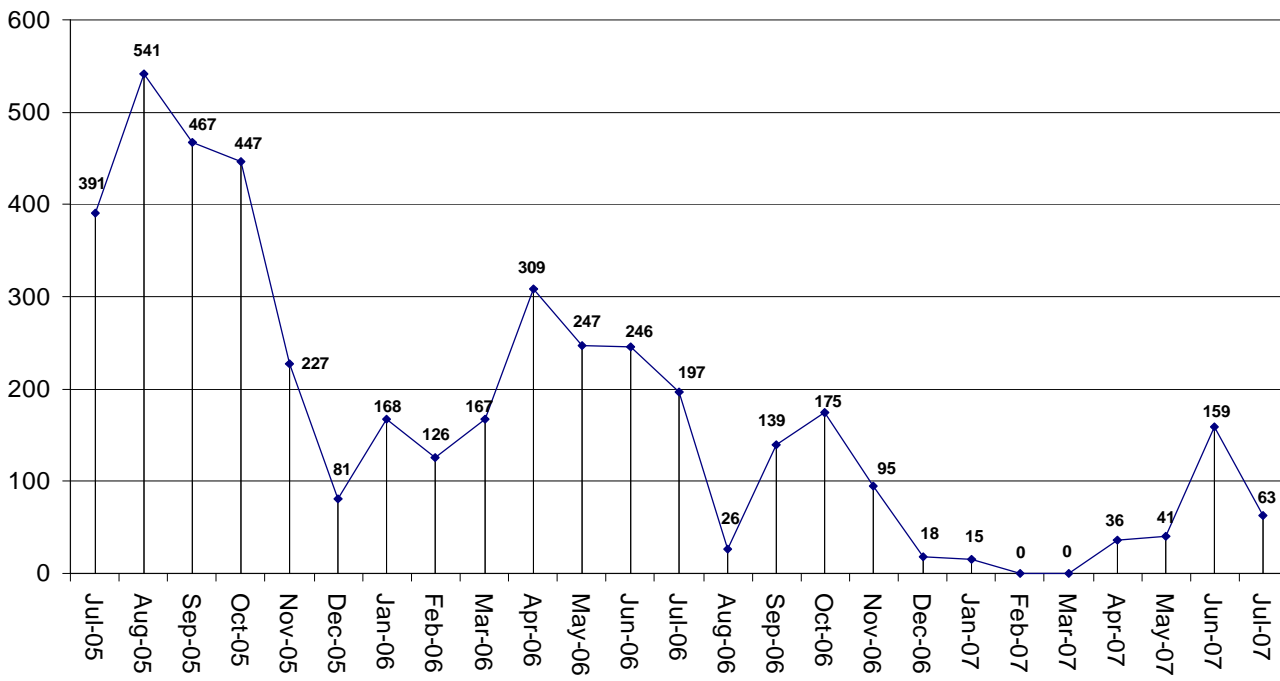




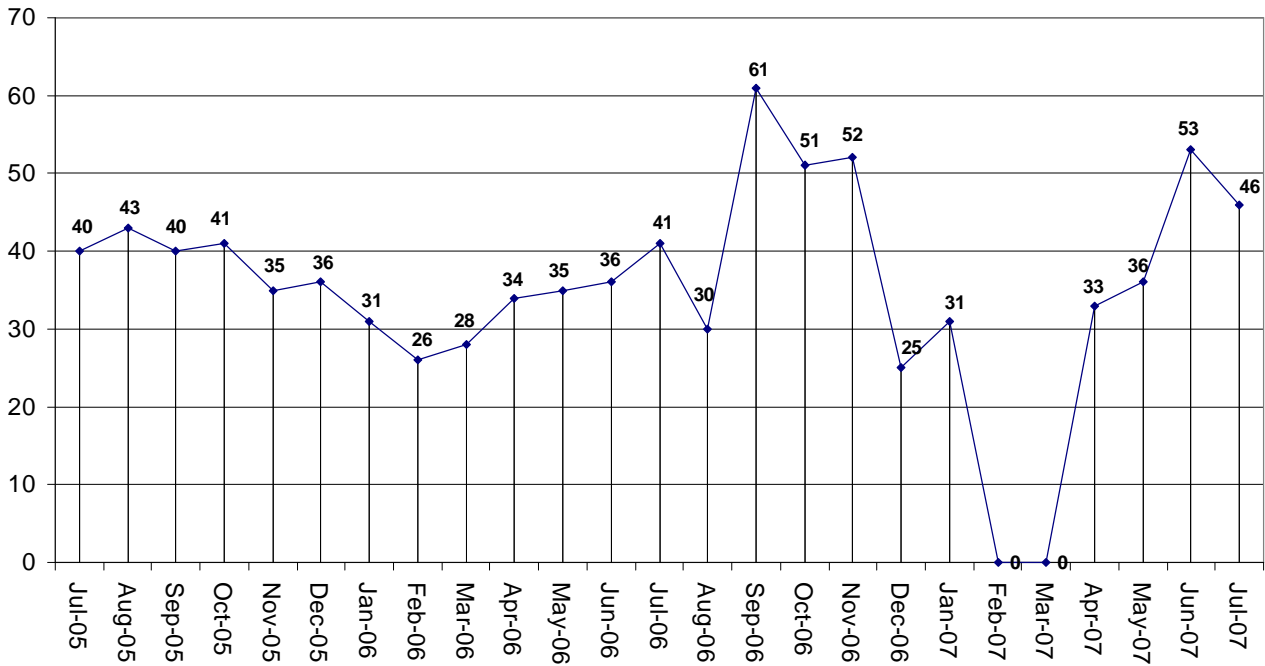
Average Daily Population



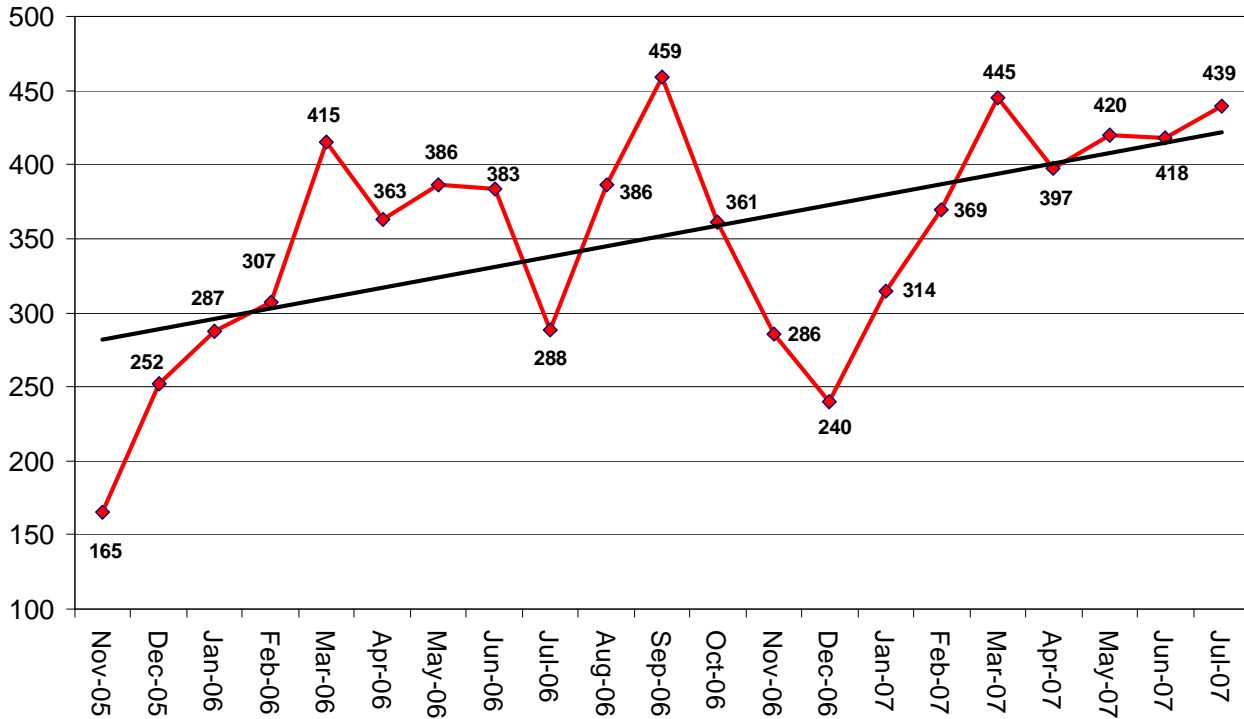
Emergency Population Releases by Month



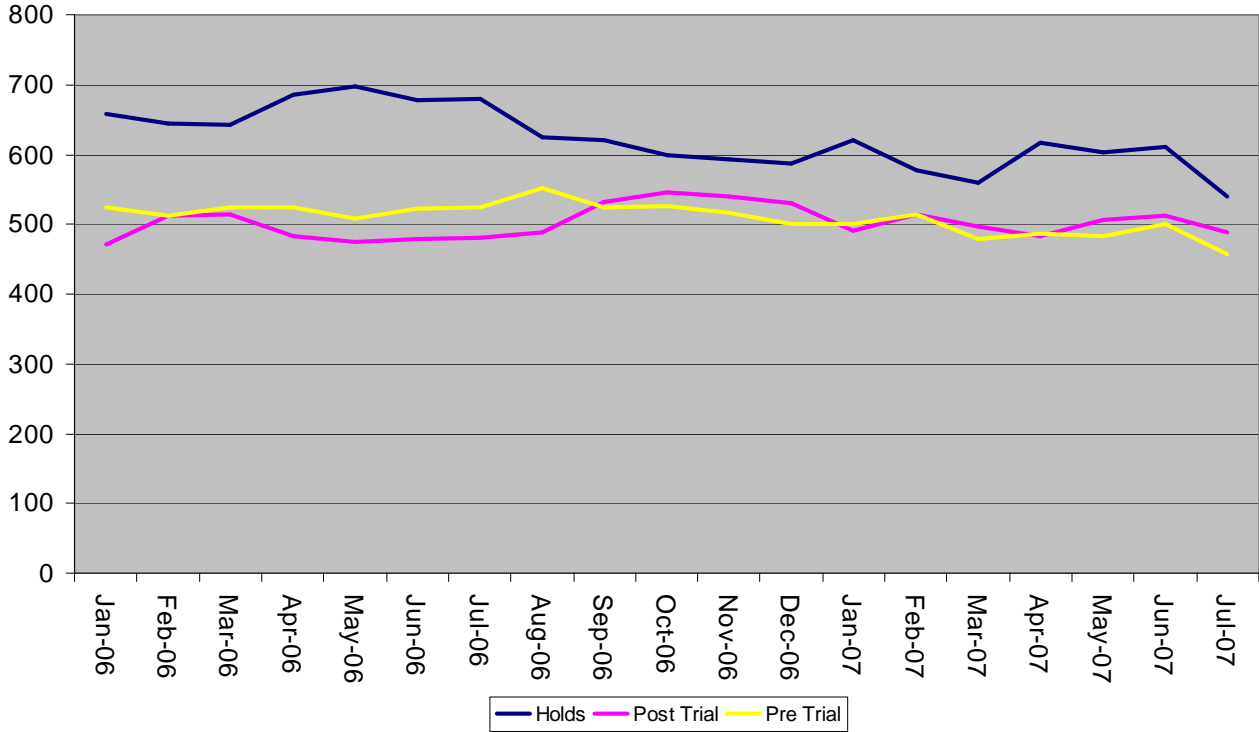
Monthly Average Score of Emergency Population Releases



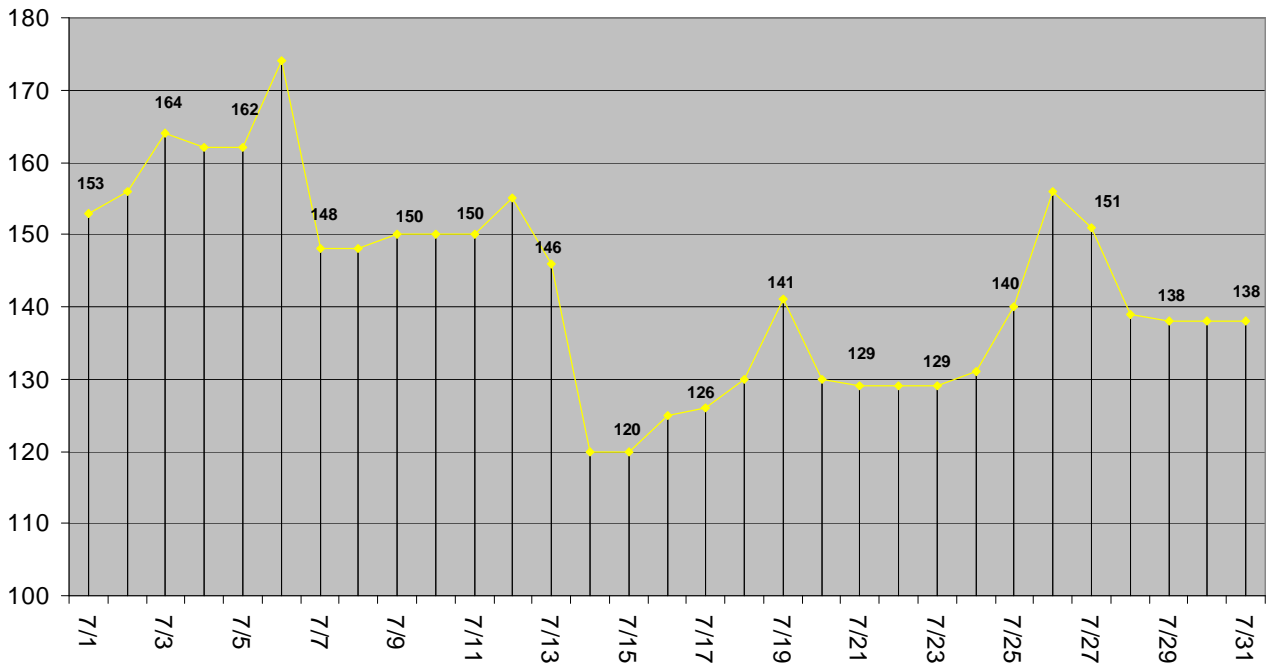
Portland 57 Project - Total Bookings by Month



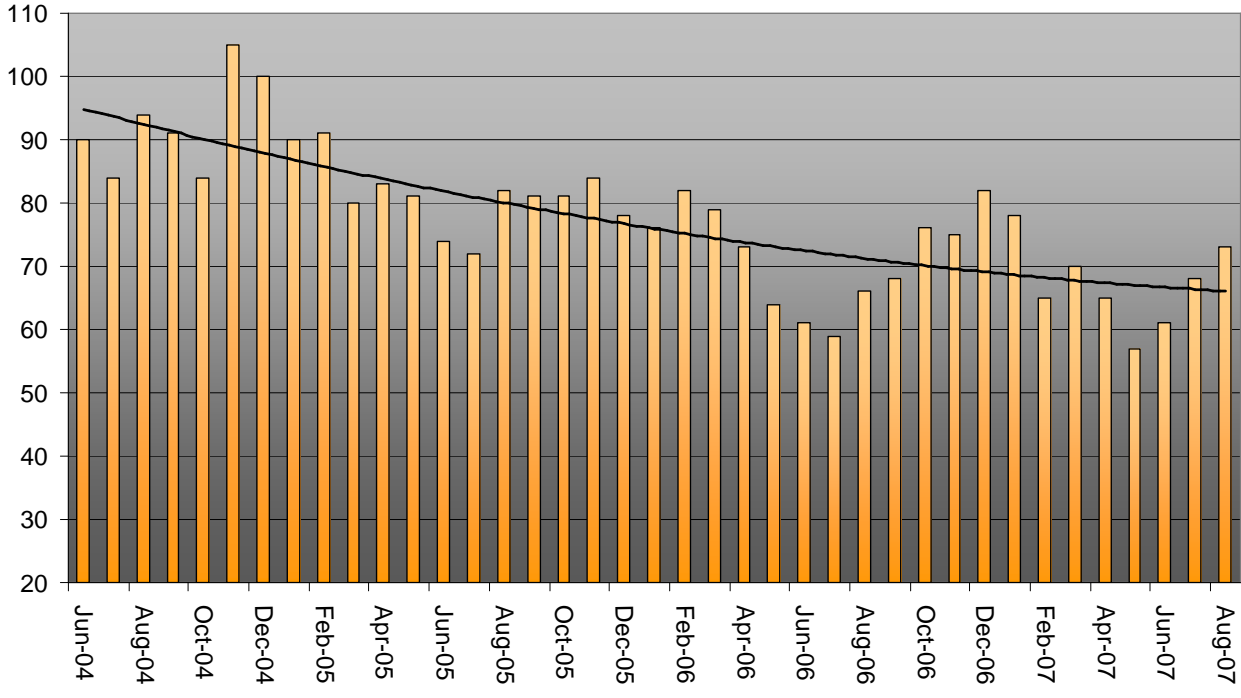
Pre-Trial vs. Post-Trial vs. Holds in Custody



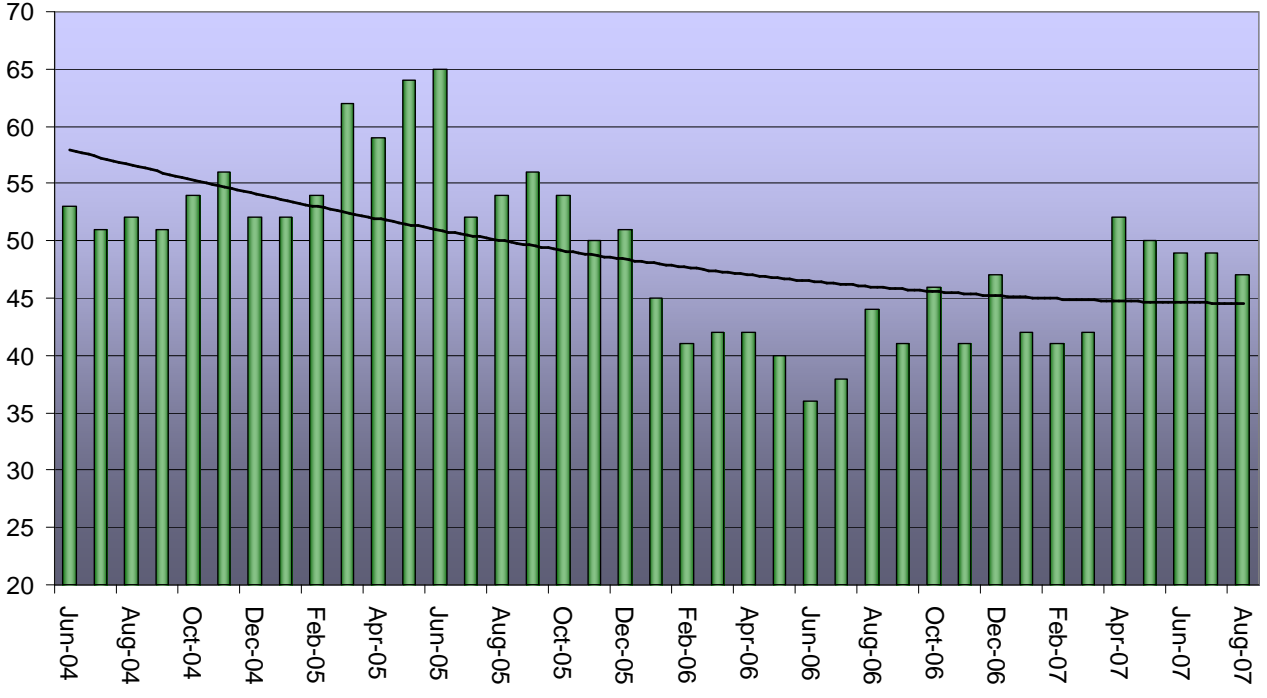
July's Daily Count of Exclusive U.S. Marshall Prisoners



**Number of Persons Held Pre-sentence
more than 150 Days**



**Count of Persons Held Pre-sentence
on Murder Related Charges**



Count of Pre-sentence persons with Murder Related Charges by Length of Stay on 1st Day of the Month

