

*Multnomah County Sheriffs Office*

Monthly Jail Statistics  
November 2006

DECEMBER 14, 2006



**BERNIE GIUSTO  
SHERIFF**

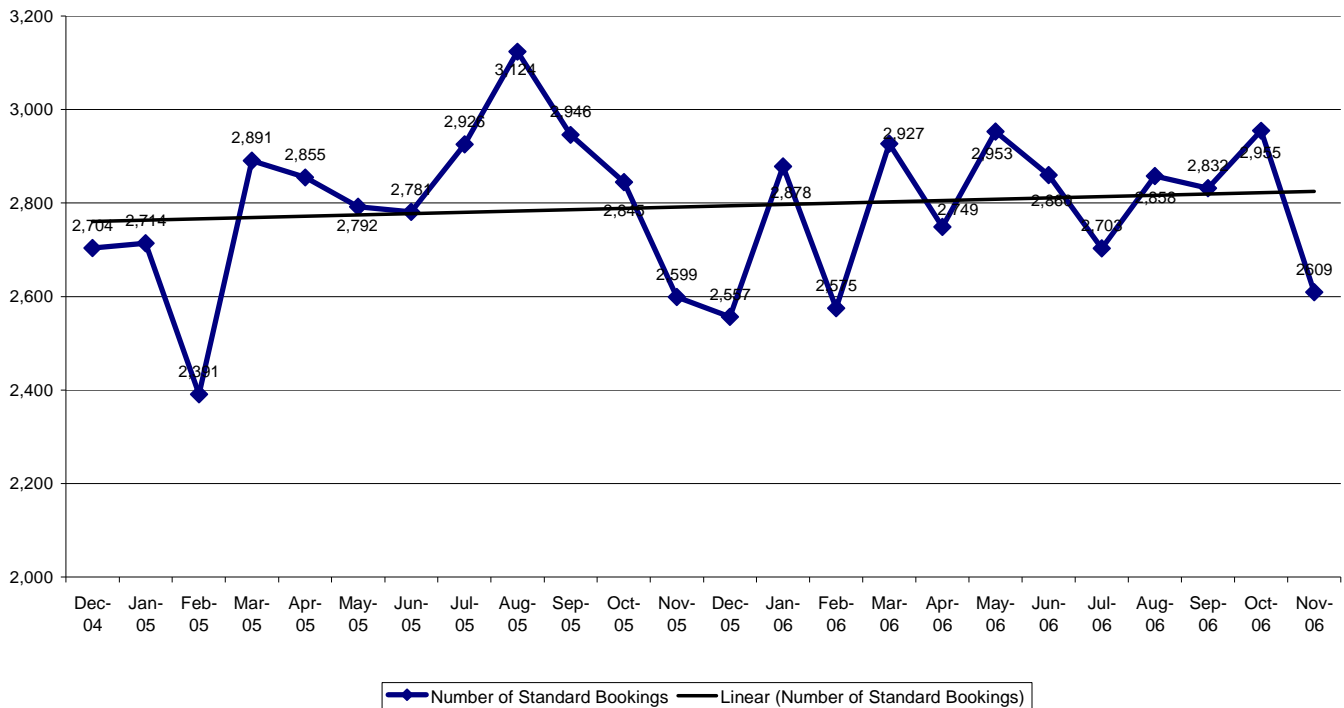
**503 988-4300 PHONE  
503 988-4500 TTY  
[www.sheriff-mcso.org](http://www.sheriff-mcso.org)**

**501 SE HAWTHORNE BLVD., SUITE 350 • PORTLAND, OR 97214**

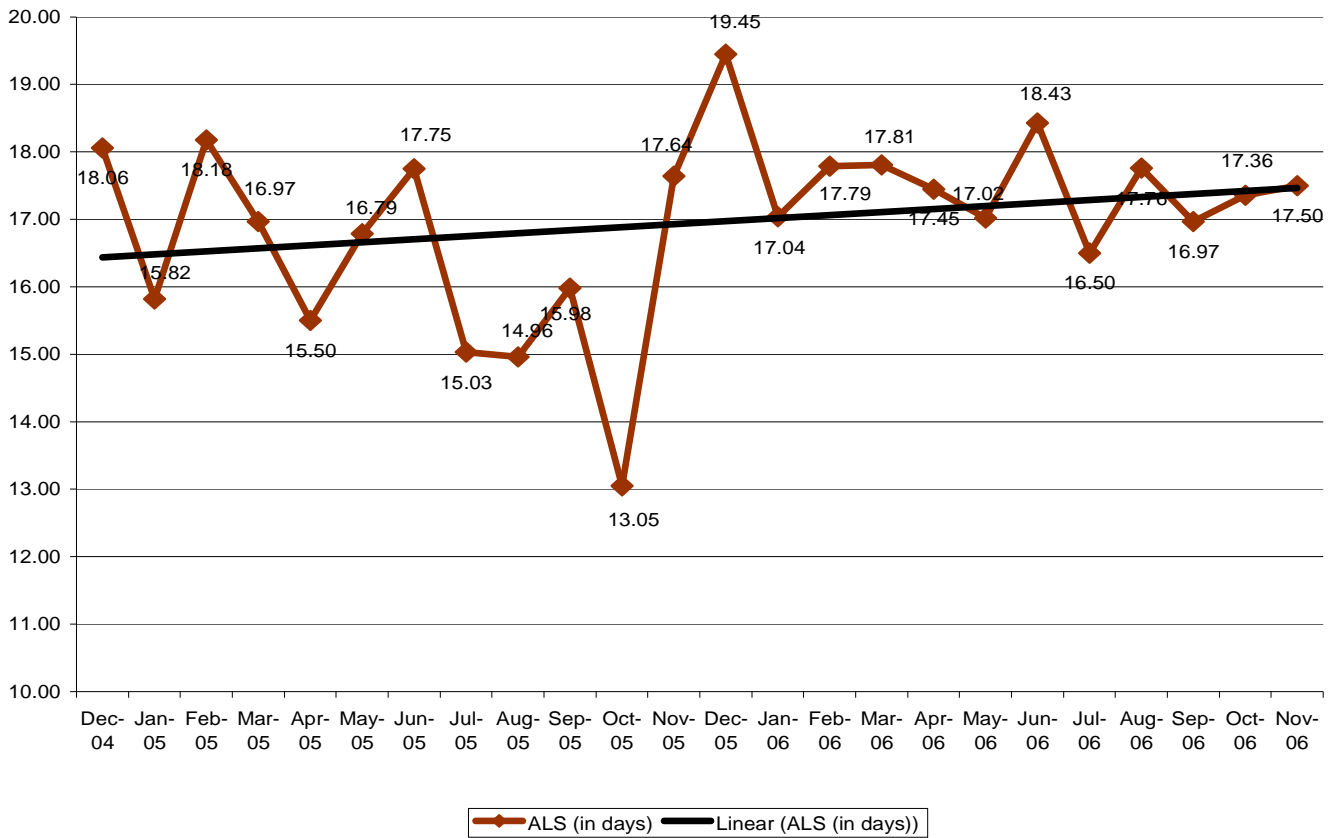
## Multnomah County Monthly Jail Statistics November 2006

Standard Bookings totaled 2,609 for the month of November; a 11.7% decrease from the total in October of 2,955 and nearly equal to November 2005's total of 2,599. November's Average Length of Stay was 17.5 days; virtually the same as October's average of 17.36 days and November of 2005's average of 17.64 days. The Average Daily Population during November was 1,669.30; a slight 1% decrease from October's average of 1,688.73; however this is a 6% increase from November of 2005 when the jail capacity was 1,576 beds. Turn Self In bookings totaled 268 which is 16% lower than October's total of 322 bookings and 7.5% lower than one year ago when November ended with 290 Turn Self In bookings. Cite & IDs for last month and a year ago were about the same, totaling 451 & 452; Cite & IDs for November totaled 405, a 10% drop. Emergency Population Releases during November totaled 95; a 45% decrease from October and a 58% decrease from November of 2005 when the total early releases were 227. The average score of those released early during November was 52; just one point higher than October's average of 51. This is a 32% increase over last November's average early release score of 35. Bookings for the Portland Project 57 totaled 286 for November and have averaged 333 bookings per month over the last 13 months. A new chart has been added showing the percentage of Pre-trial vs. Post-trial in custody each month.

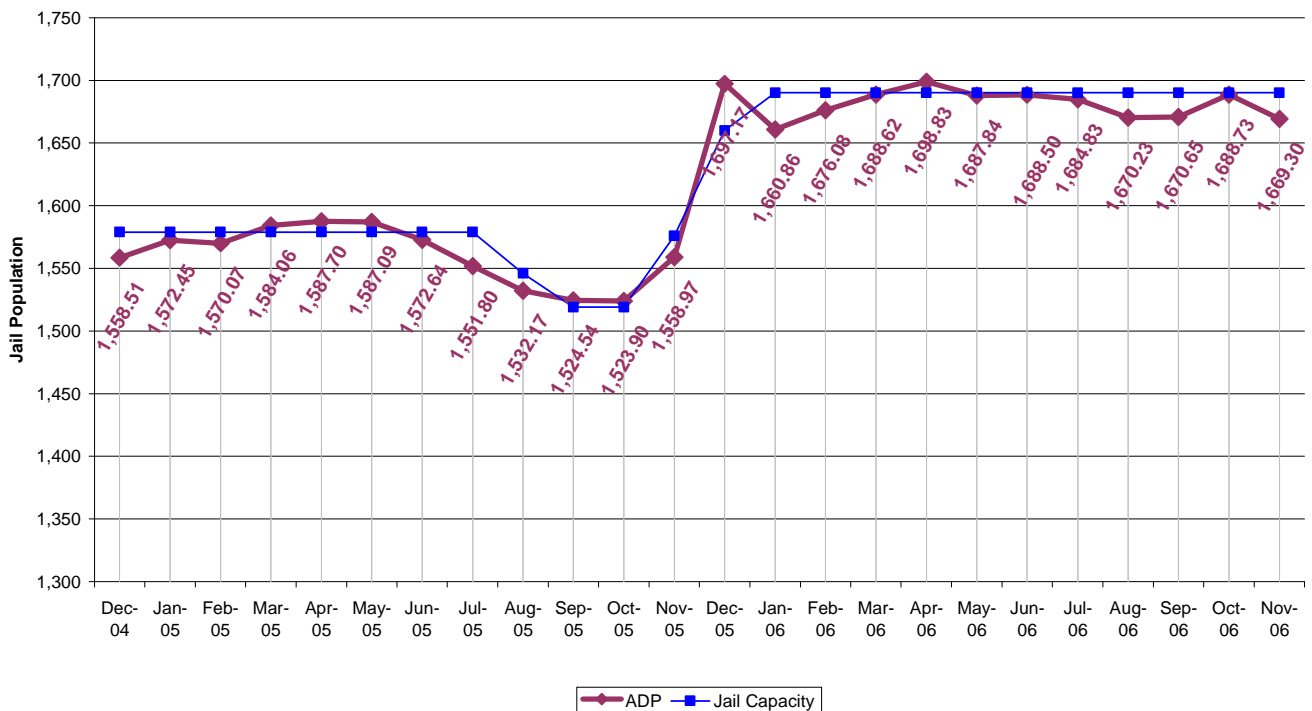
### Standard Bookings



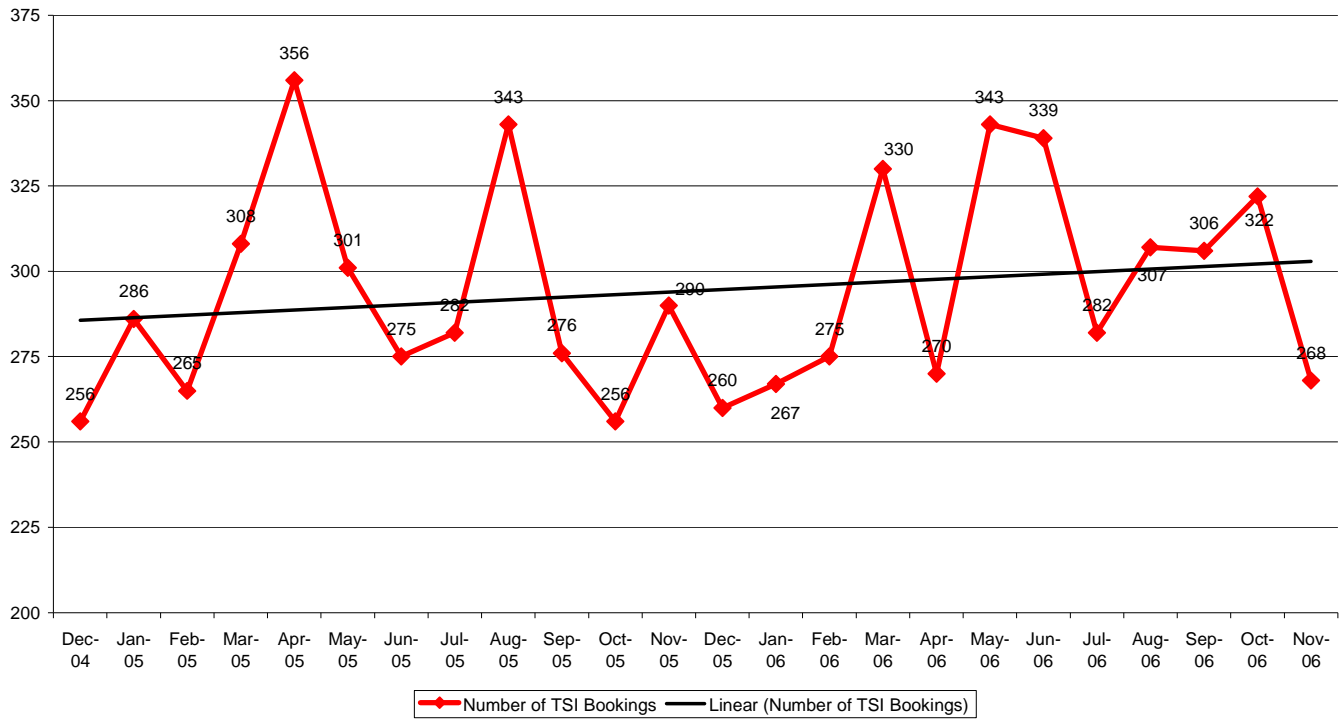
### Average Length of Stay



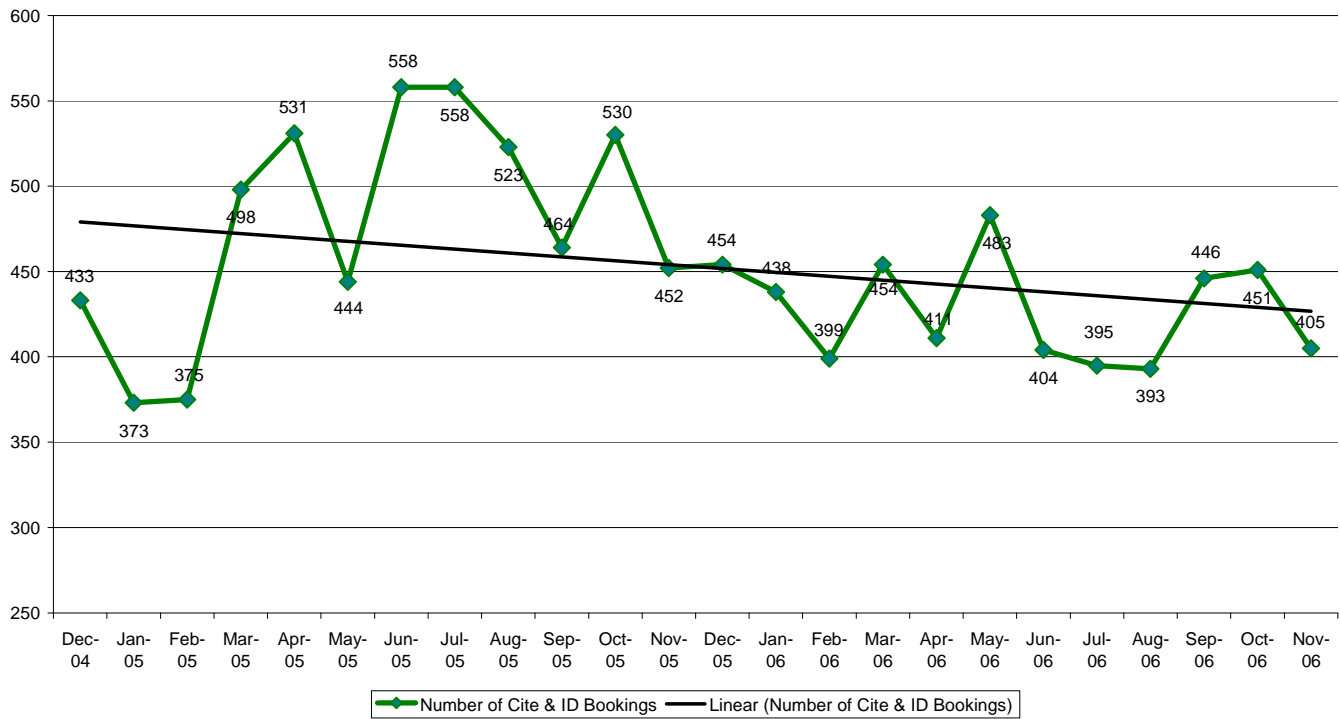
### Average Daily Population



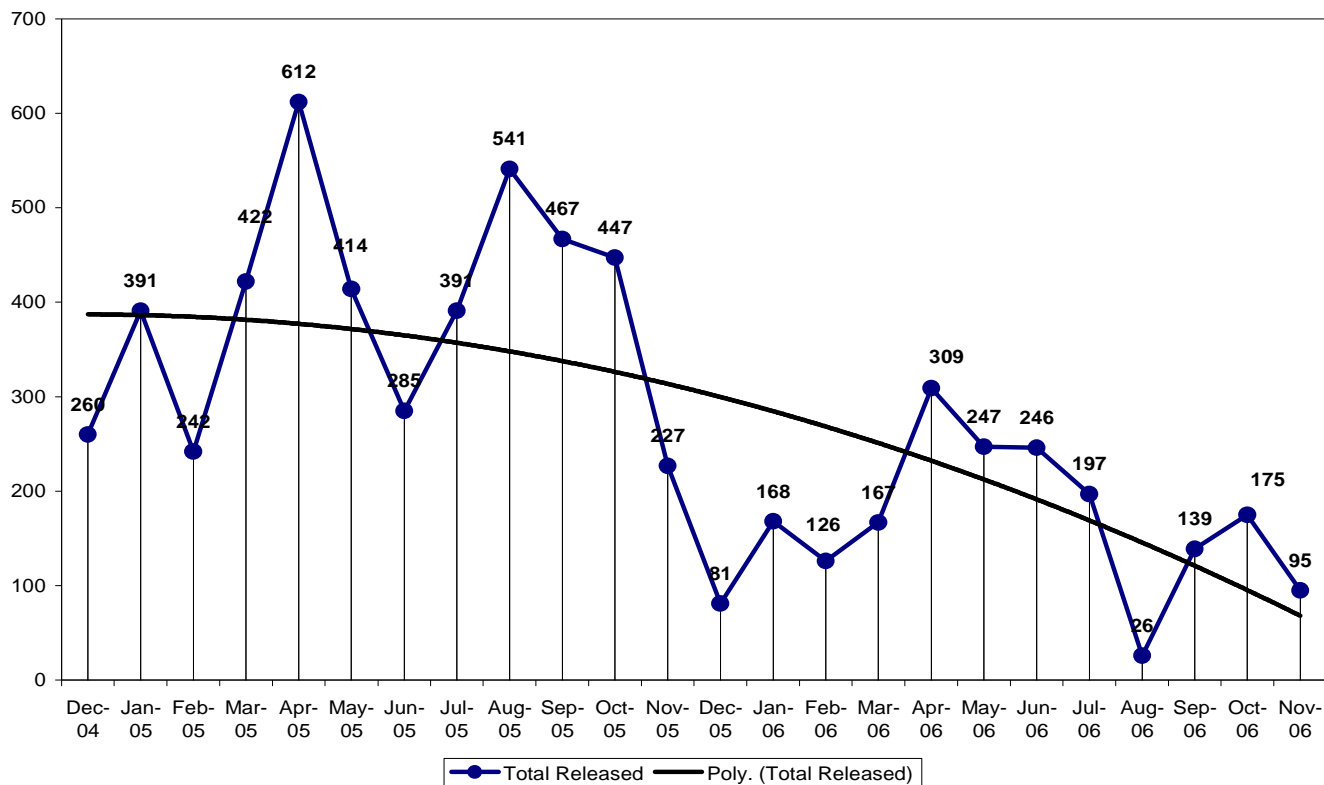
### Turn-Self-In (TSI) Bookings



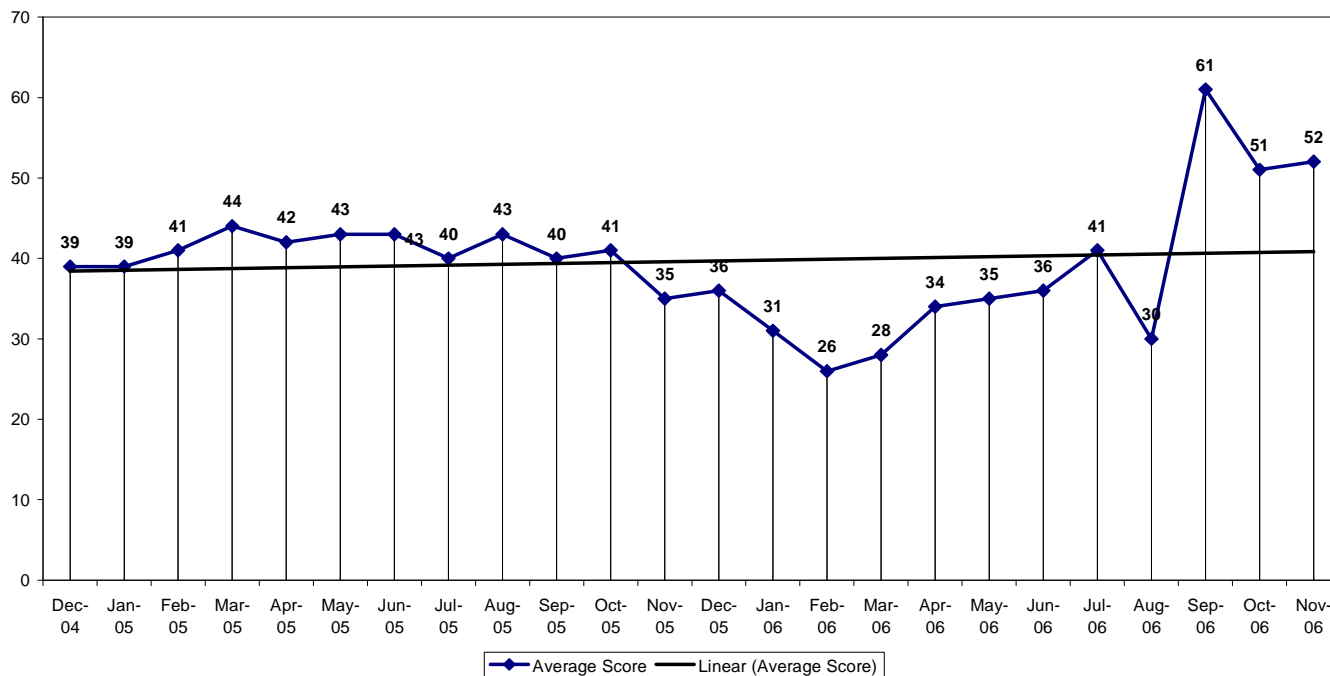
### Cite & ID Bookings



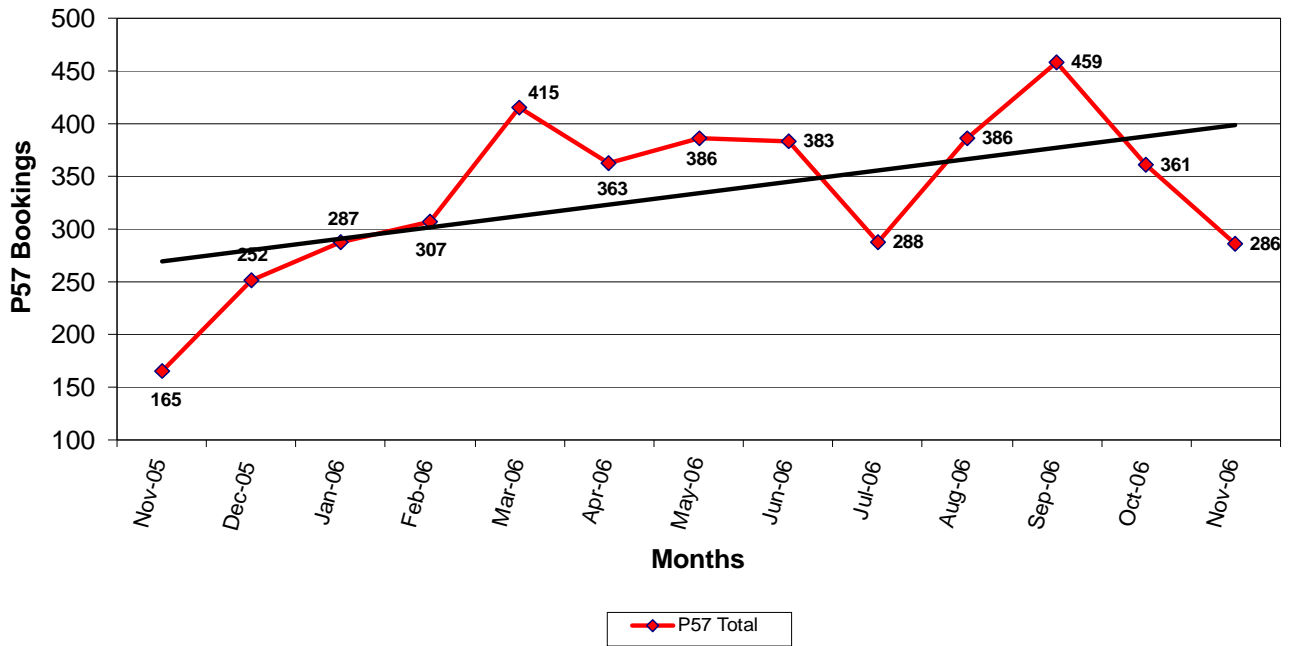
### Emergency Population Releases by Month



### Monthly Average Score of Emergency Population Releases



### Portland 57 Project - Total Bookings by Month



### Population by Custody Type

