

Multnomah County Sheriff's Office

**Emergency Population Releases
Monthly Report – July 2008**

AUGUST 11, 2008



**Robert Skipper
SHERIFF**

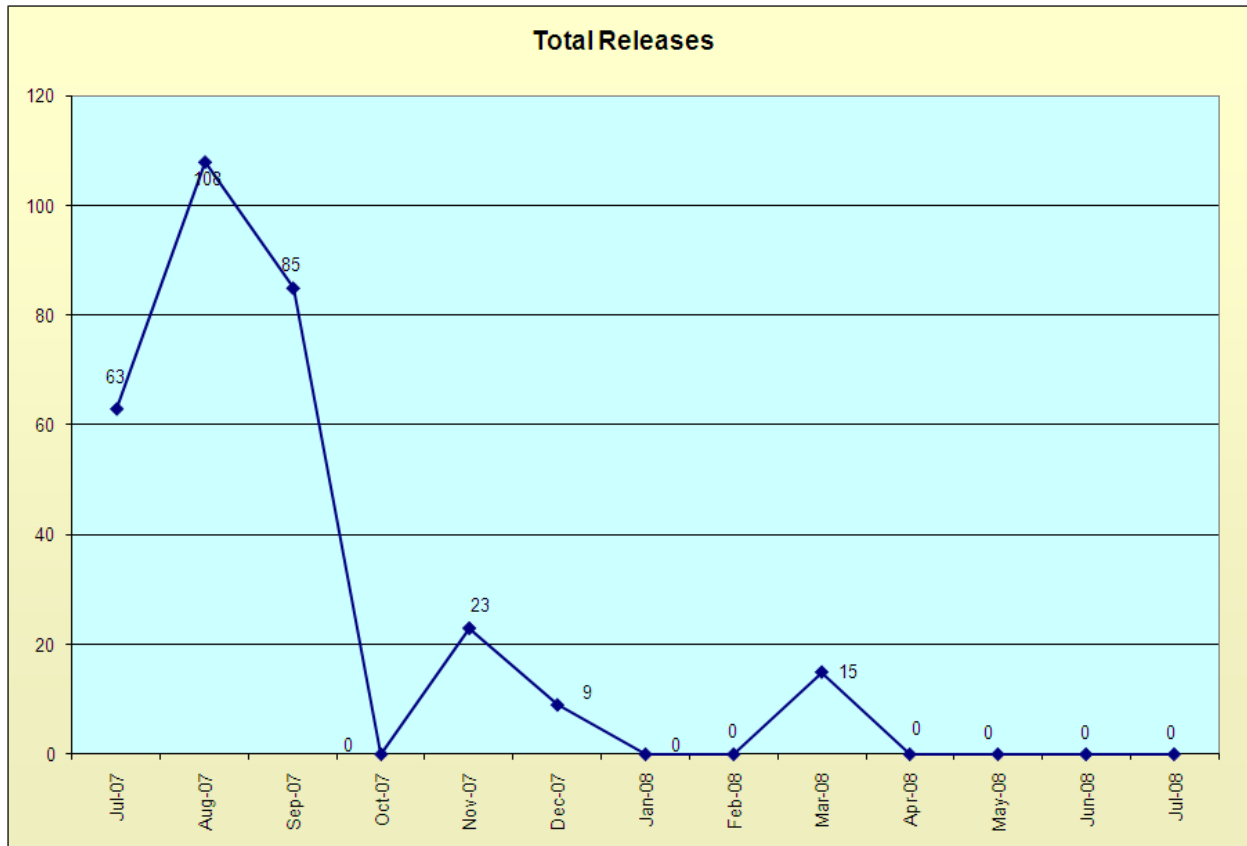
**503 988-4300 PHONE
503 988-4500 TTY**

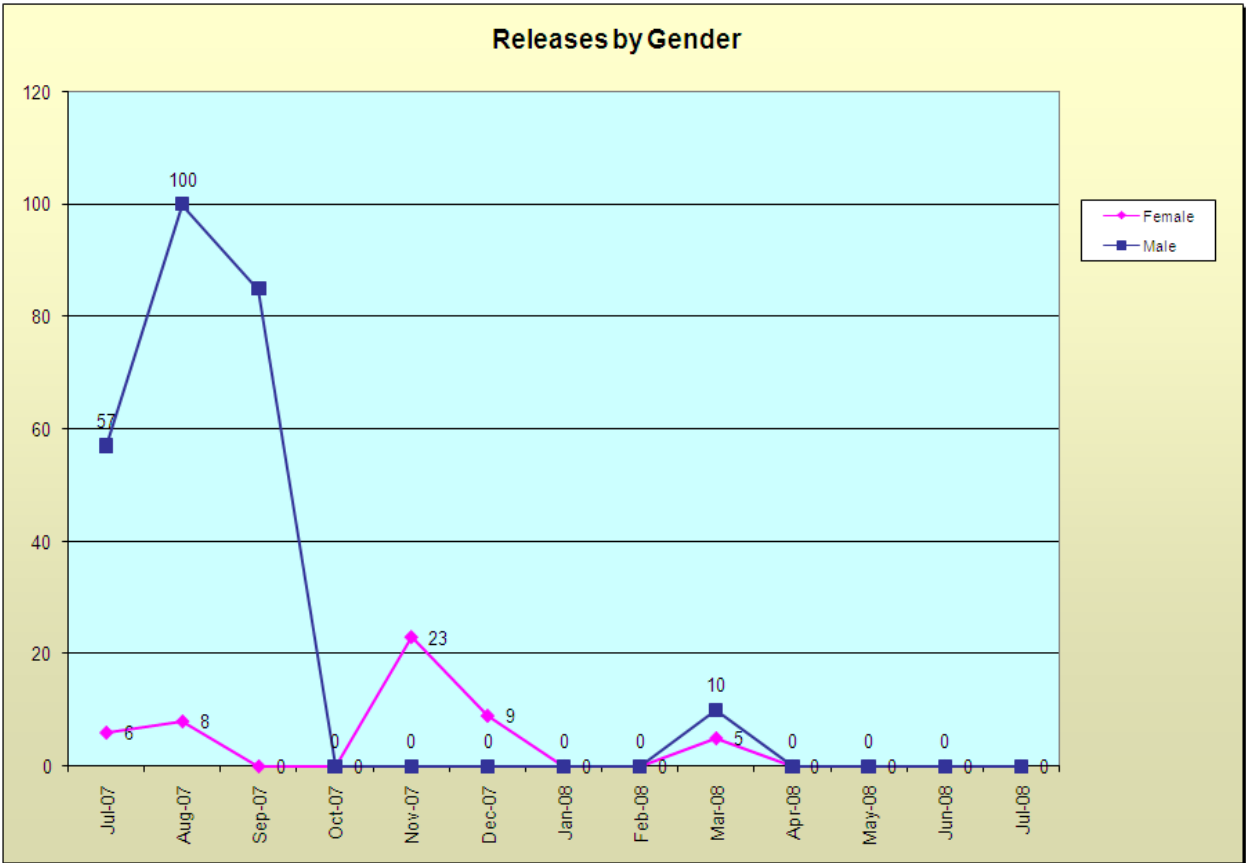
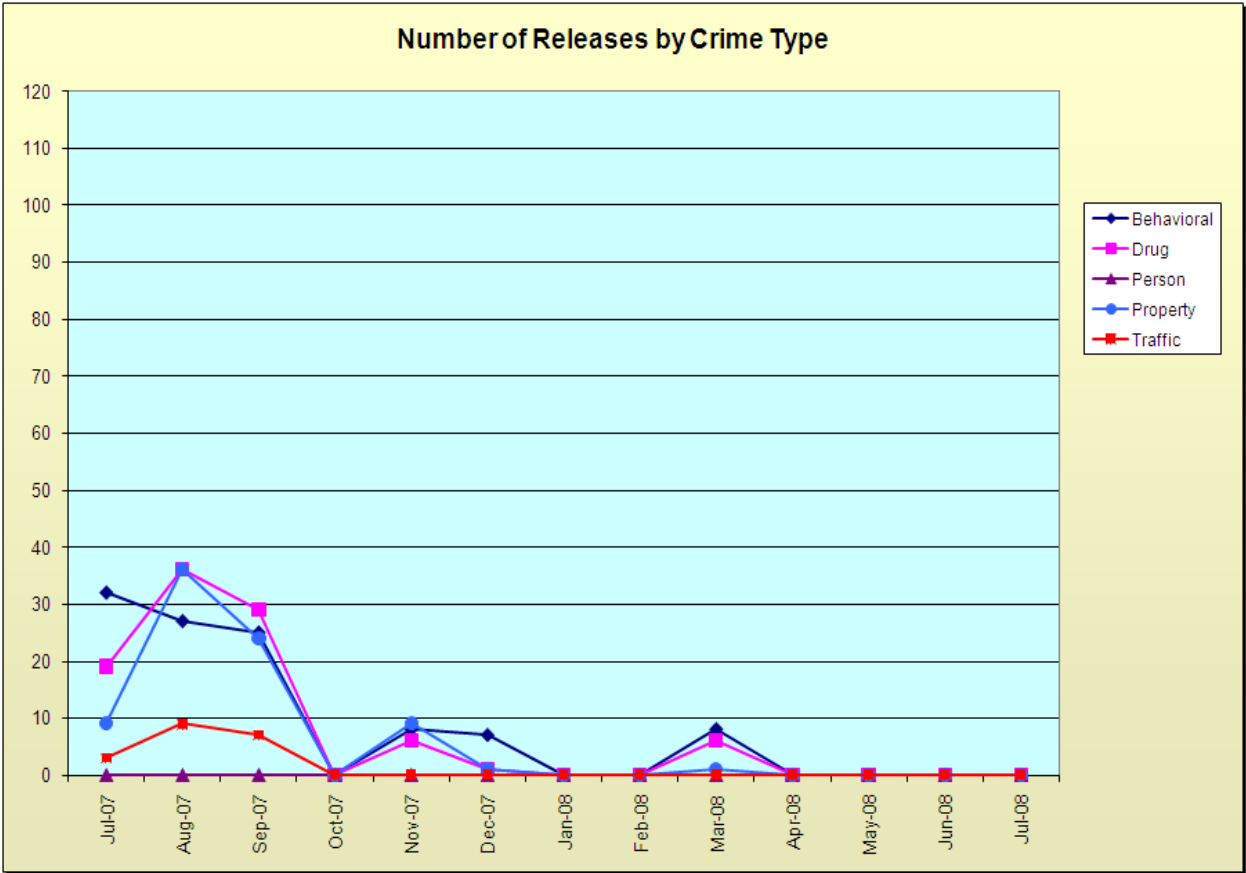
www.mcso.us/public/

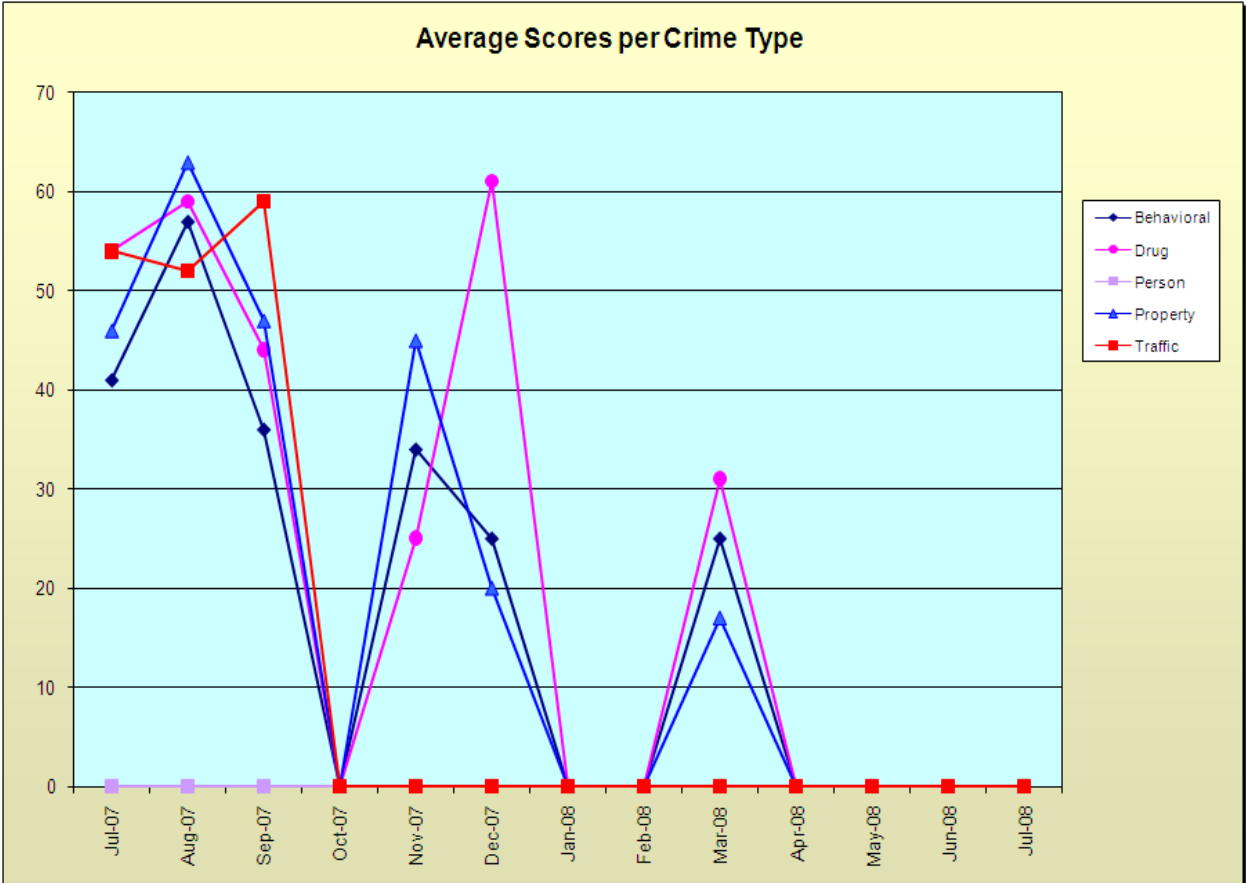
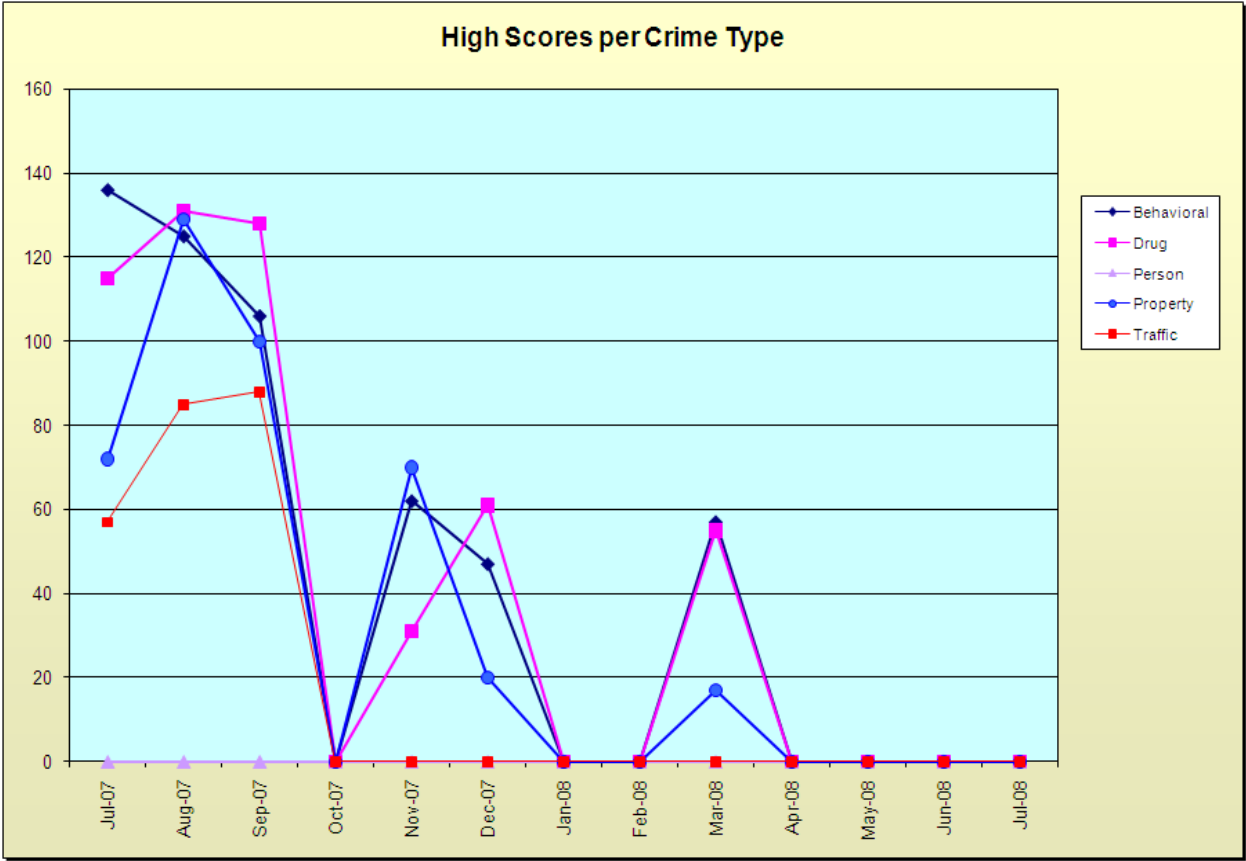
501 SE HAWTHORNE BLVD., SUITE 350 • PORTLAND, OR 97214

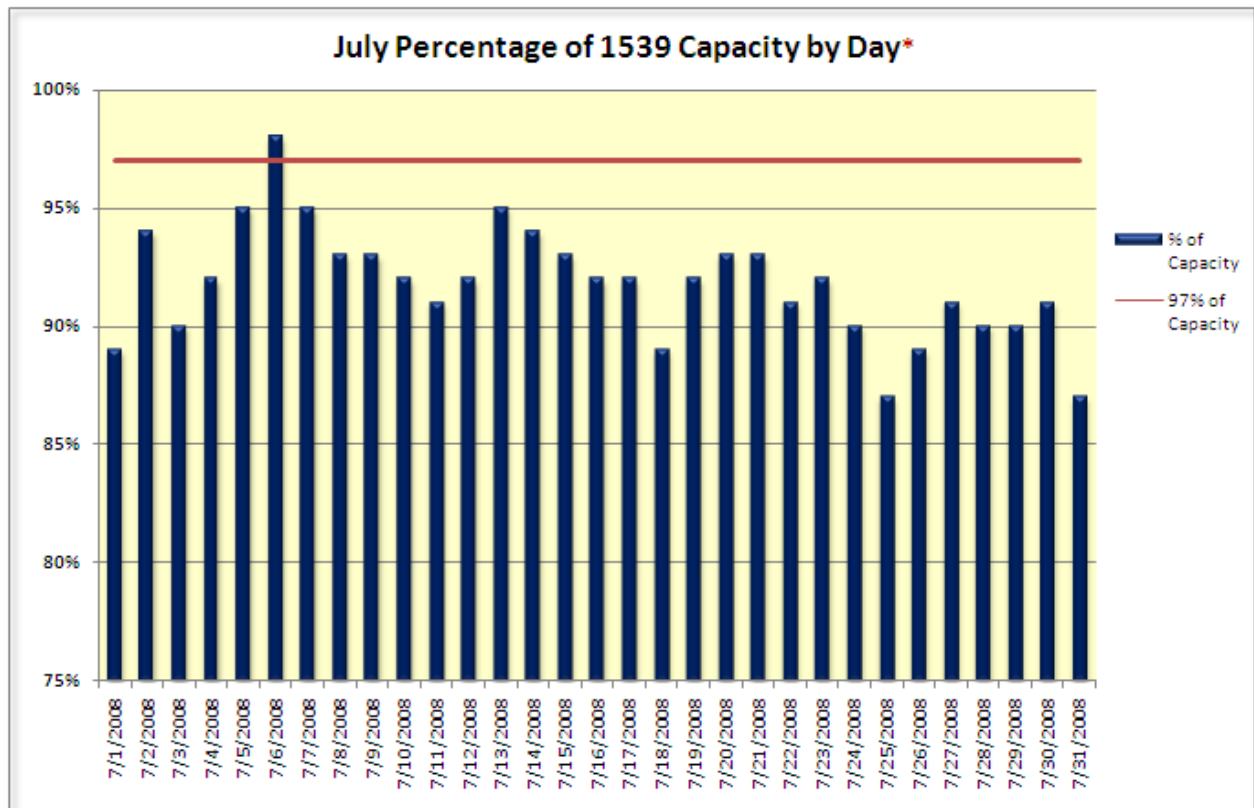
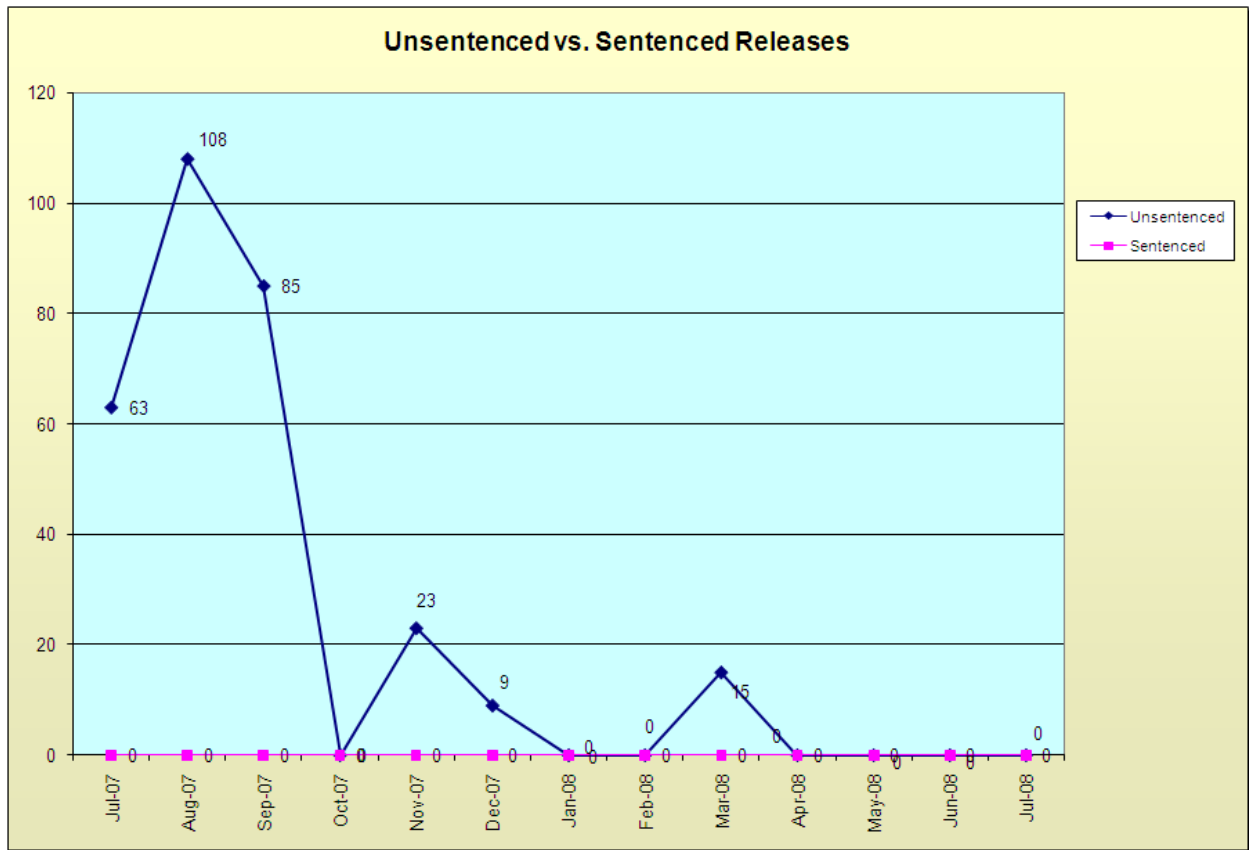
Monthly Emergency Population Release Report July 2008

There were no emergency population releases during July 2008, though jail capacity did go into emergency population status once during the month. January, February, April, May and June of this year also saw no emergency population releases. Total inmate capacity was reduced from 1633 to 1539 on July 1 due to budget reductions.









*Red bars indicate days on which EPRs occurred, if any. Note that EPRs do not always or only occur when capacity exceeds the 97% threshold. Efforts are made to balance the population to the demands of the classification system for specific types of jail beds and balance the space needs for male or female inmates. Additionally, jail capacity varies throughout the day, with these capacity calculations based on 10PM population counts.