

*Multnomah County Sheriff's Office*

Emergency Population Releases  
Monthly Report – April 2008

MAY 20, 2008



**BERNIE GIUSTO  
SHERIFF**

**503 988-4300 PHONE  
503 988-4500 TTY**

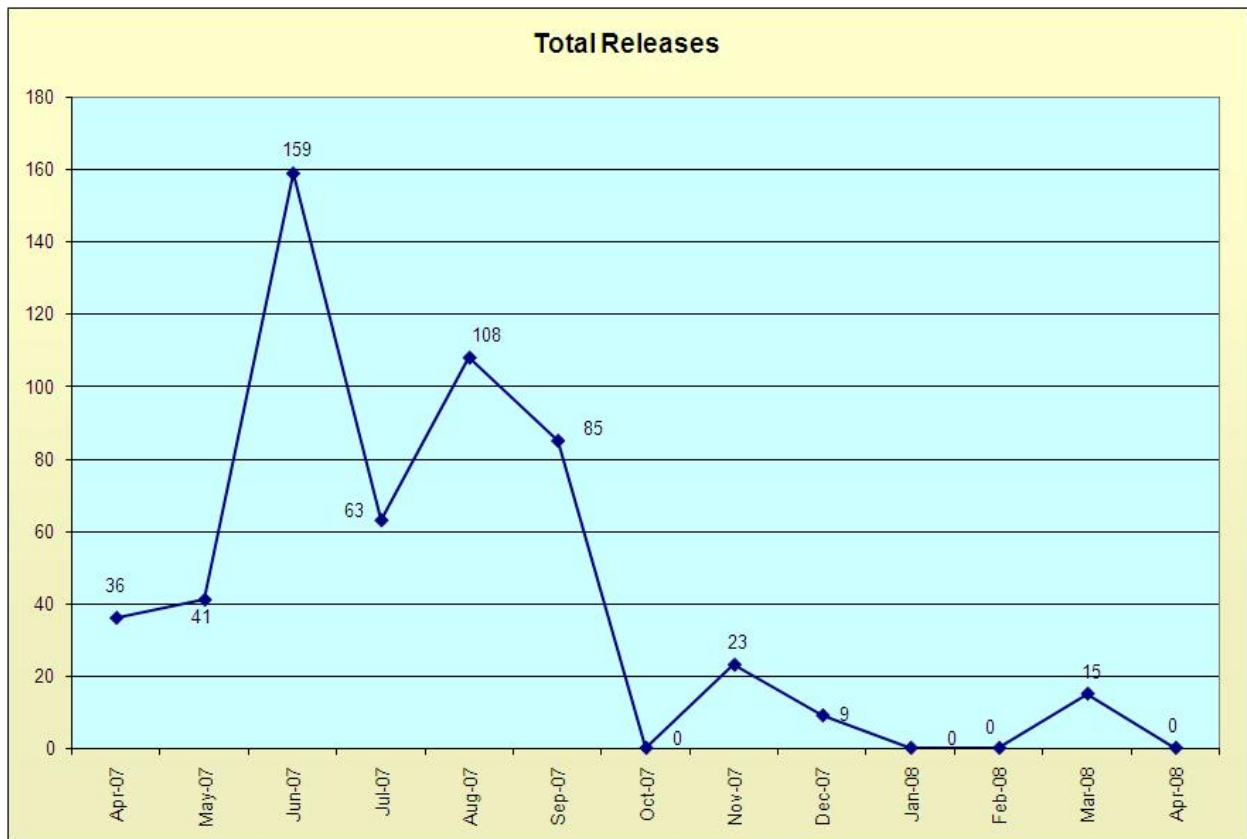
[www.mcso.us/public/](http://www.mcso.us/public/)

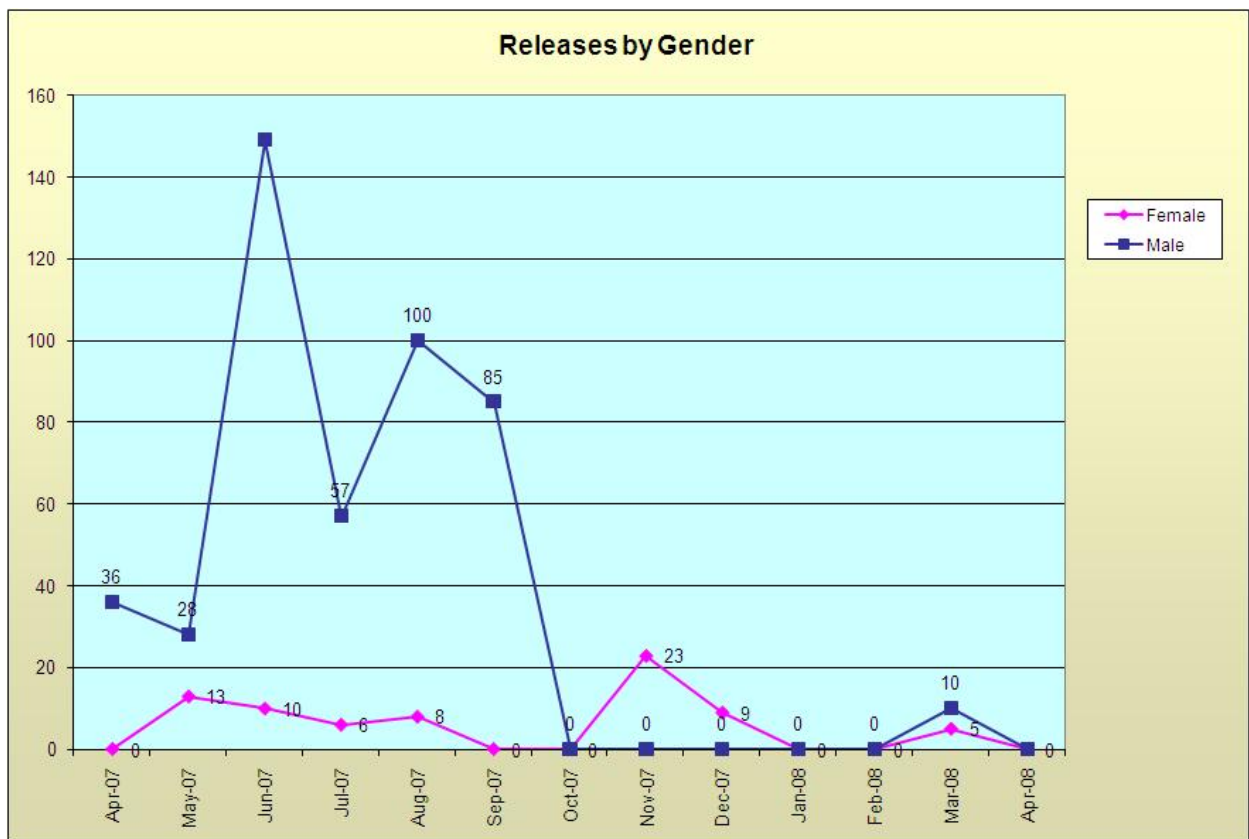
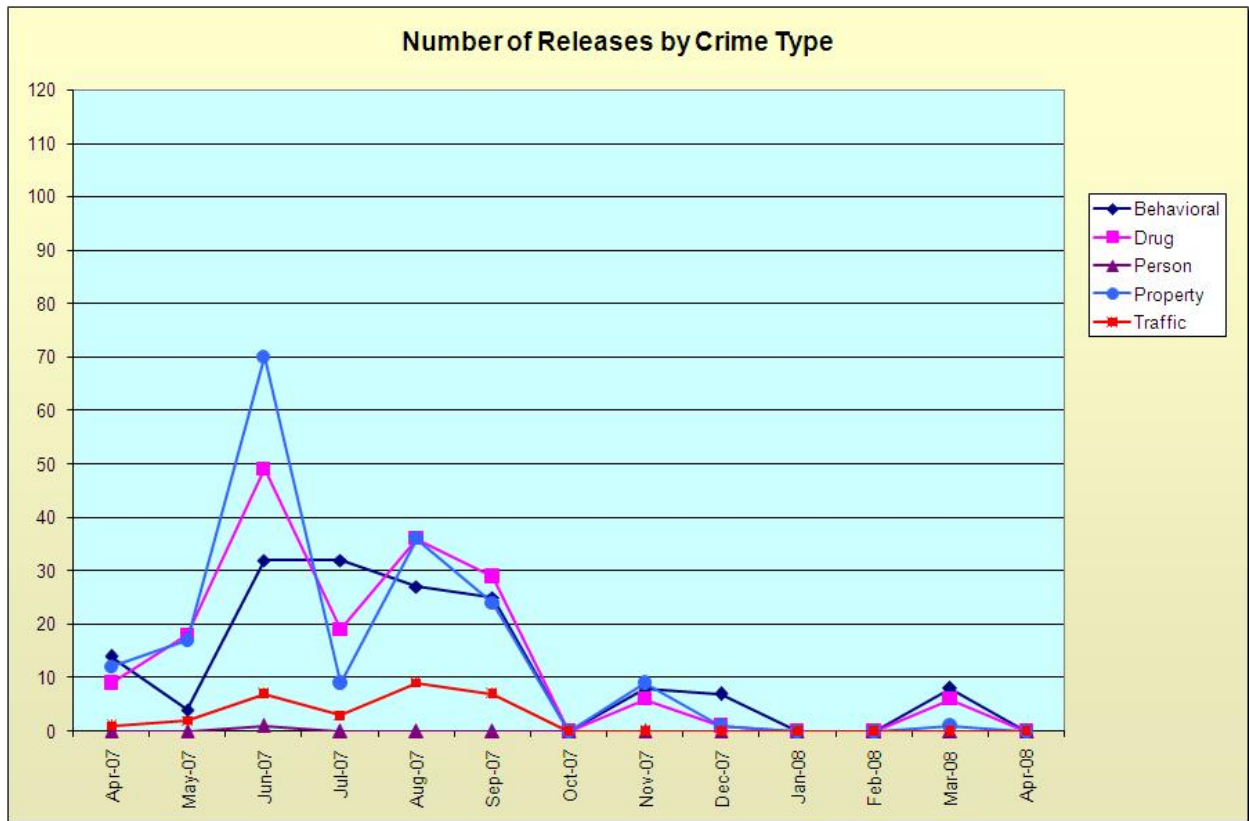
**501 SE HAWTHORNE BLVD., SUITE 350 • PORTLAND, OR 97214**

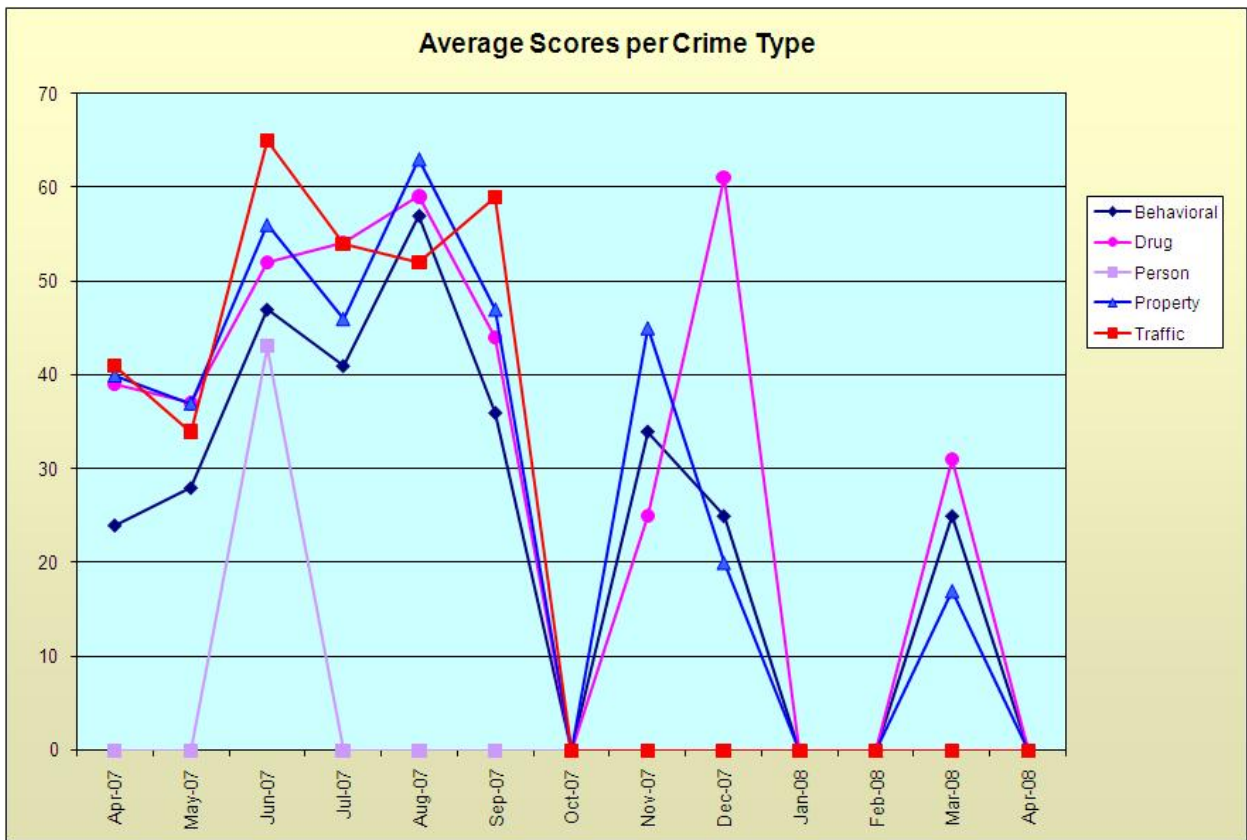
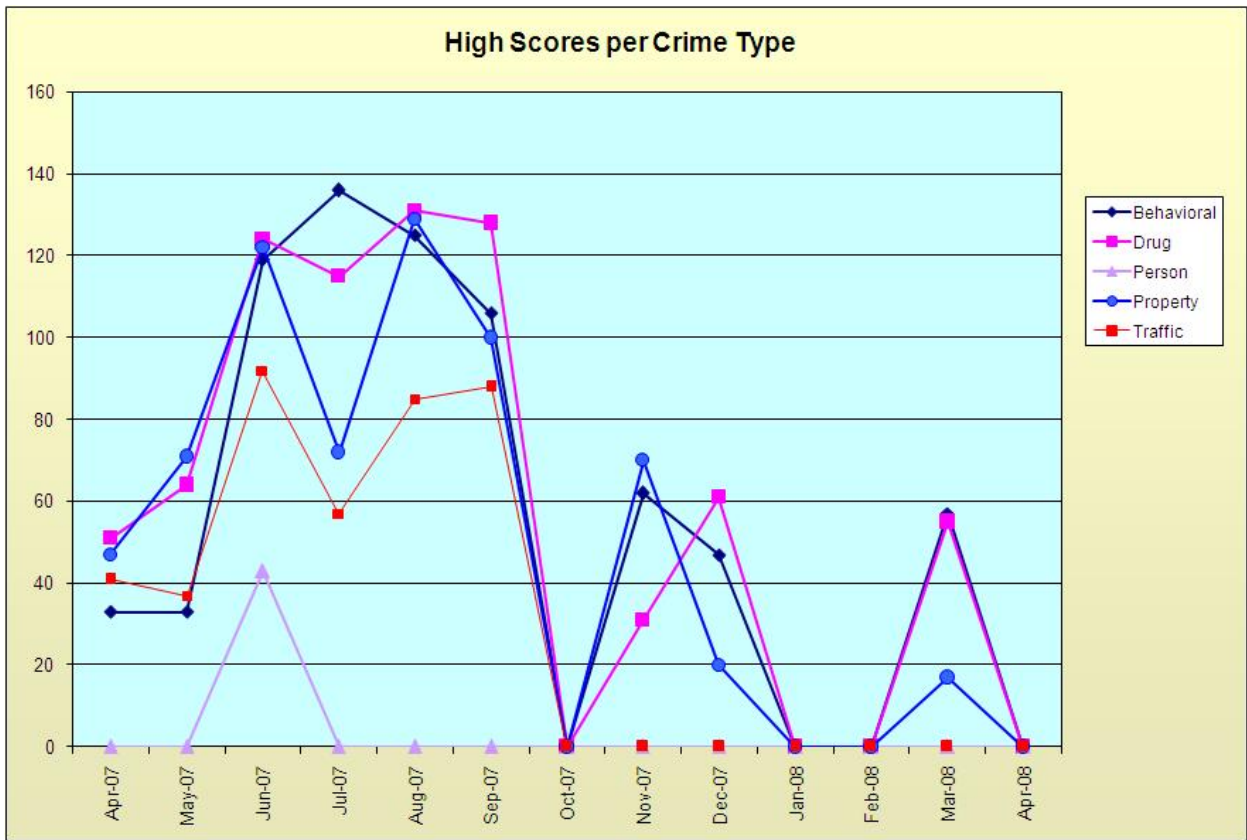


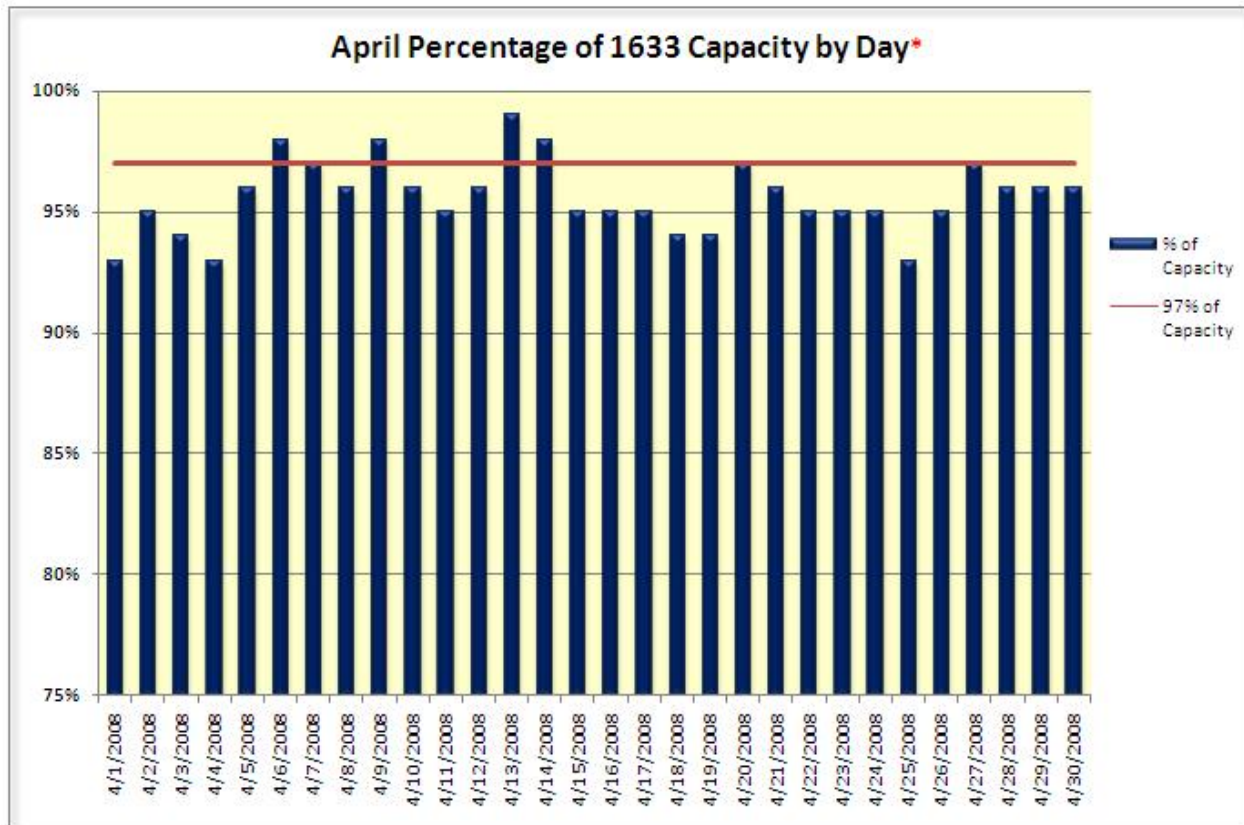
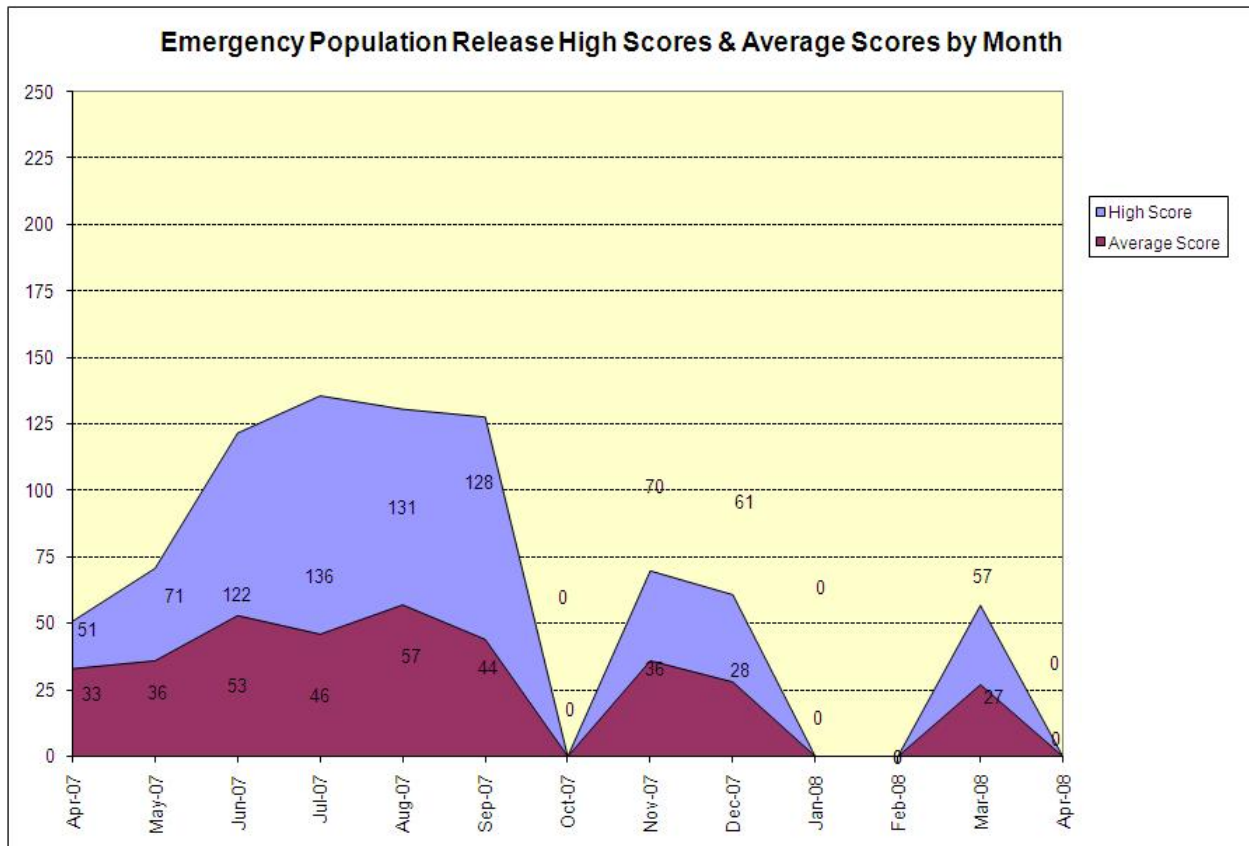
## Monthly Emergency Population Release Report April 2008

There were no emergency population releases in April 2008, despite jail capacity being in emergency population status on four days during the month. January and February of this year also saw no emergency population releases.









\*Red bars indicate days on which EPRs occurred. Note that EPRs do not always or only occur when capacity exceeds the 97% threshold. Efforts are made to balance the population to the demands of the classification system for specific types of jail beds and balance the space needs for male or female inmates. Additionally, jail capacity varies throughout the day, with these capacity calculations based on 10PM population counts.