

Multnomah County Sheriff's Office

An Examination of the  
Adult Jail Population by Race

2007

APRIL 2008



**BERNIE GIUSTO**  
**SHERIFF**

**503 988-4300 PHONE**

**503 988-4500 TTY**

**[www.mcso.us](http://www.mcso.us)**

**501 SE HAWTHORNE BLVD., SUITE 350 • PORTLAND, OR 97214**

## **Introduction**

This report examines booking type, charges at booking, average length of stay, reasons for permanent release, and facility composition of Multnomah County adult jail facilities by the race of the arrestee/ inmate.

Data are presented for calendar years 2006 and 2007. Overall, when examined by race, characteristics of the population within the adult jail facilities in Multnomah County were consistent between 2006 and 2007.

### **Special Considerations**

When reviewing this report, note that the scope of this report does not take into account the following characteristics:

- Economic status or educational background of the persons,
- Arrest location,
- Arresting agency,
- Patrol density, or
- Special operations in which a person may be arrested.

In addition, data in this report represent records of unique bookings and releases and not persons booked/released. Some persons had multiple instances.

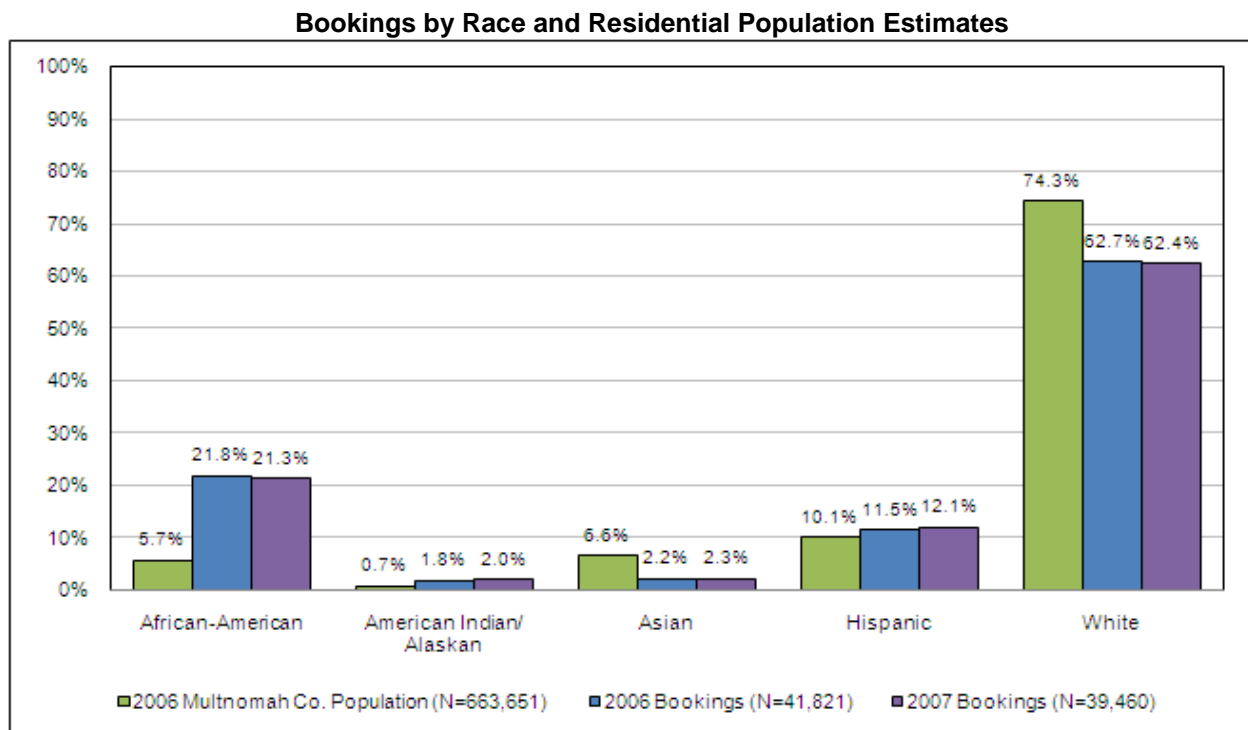
## Bookings by Race

Data was based on bookings from January 2006 through December 2007 into Multnomah County Sheriff's Office jail facilities. Booking types included in this report are:

- **Standard** – This is the full booking process following an arrest and will lead to the person being housed unless some release mechanism is utilized such as posting bail or release on own recognizance (ROR).
- **Cite & ID** – The person is only processed to the point of ensuring that they are properly identified, then given a citation and released.
- **Turn-Self-In (TSI)** - The offender has been tried and sentenced to intermittent jail time, usually weekends, until all sentenced time is served.

A fourth booking type, **In-transit**, where an inmate is held for another jurisdiction while being transported, is not included.

In both 2006 and 2007, booking percentages for African-American, American Indian/ Alaskan, and Hispanic arrestees exceeded their County population percentages. Percentages for White and Asian arrestees were below County population percentages. From 2006 to 2007, the booking percentages decreased for African-American and White arrestees and increased for American Indian/ Alaskan, Asian, and Hispanic arrestees.



Note: The Multnomah County Sheriff's Office data used in this report identified the race of the person as "Unknown" in approximately 0.07% of the records. These records are not included in the report. The County's residential population data come from the U.S. Census Bureau's "2006 American Community Survey" (<http://www.census.gov/acs/>). The 2006 American County Survey lists 2.6% of the County's population as "Some other race" or "Two or more races." This

category is not presented and thus, County residential population percentages listed will not equal 100% and some categories in the jail booking population may appear overrepresented.

### Booking Types by Race

The following table breaks out booking types by race. In 2007, 10% of Cite and ID bookings were of African-American arrestees, while they comprised over 23% of Standard bookings. A similar pattern is seen in 2006. The reverse pattern is seen in the booking patterns of Asian, Hispanic, and White arrestees, where they are proportionately Cite and ID booked at a higher percentage than Standard booked.

Looking across the two years, booking data for 2007 are relatively similar to 2006. Percentages for Cite and ID and Standard Bookings in 2007 are within 2 percentage points of 2006. The African-American and Asian arrestees had small decreases in Cite and ID bookings between years, while American Indian/ Alaskan, Hispanic, and White arrestees had increases. African-American and White arrestees had slight decreases in their percentage of all Standard bookings and all other races had slight increases. Turn-self-in bookings decreased for White offenders and increased for Hispanic offenders.

**Booking Types by Race**

Race	Cite and ID Booking		Standard Booking		Turn-self-in Booking		Total Bookings	
	2006 (N=5071)	2007 (N=4541)	2006 (N=33,176)	2007 (N=31,535)	2006 (N=3574)	2007 (N=3384)	2006 (N=41,821)	2007 (N=39,460)
African-American	11.8%	10.0%	23.8%	23.3%	17.7%	17.6%	21.8%	21.3%
Amer. Indian or Alaskan	1.0%	1.1%	2.0%	2.2%	1.0%	1.2%	1.8%	2.0%
Asian	3.6%	3.2%	1.9%	2.0%	3.3%	3.3%	2.2%	2.3%
Hispanic	15.3%	16.4%	11.0%	11.3%	10.1%	13.2%	11.5%	12.1%
White	68.3%	69.2%	61.3%	61.2%	68.0%	64.6%	62.7%	62.4%

When looking at how different booking methods were applied *within* each race, African American and American Indian/ Alaskan arrestees were Standard booked at percentages ranging from 86.5% to 89.1% in 2006 and 2007. This is almost 10 percentage points more than the percentage of Whites and Hispanic arrestees being Standard booked and almost 15 to 20 percentage points more than the percentage of Asian arrestees. Asian arrestees had the highest percentage of Cite and ID bookings in 2006 and 2007.

Between 2006 and 2007, African-American and White arrestees had a decrease in Cite and ID and an increase in Standard bookings. American Indian/ Alaskan and Hispanic arrestees had increases in percentage of Turn-self-in bookings and decreases in Standard and Cite and ID bookings between the two years. Asian arrestees also had an increase in the percent of Standard bookings and decreases in Cite and ID and Turn-self-in bookings.

### 2006 Booking Types within Race

	African-American (N=9110)	Amer. Indian or Alaskan (N=763)	Asian (N=914)	Hispanic (N=4798)	White (N=26,236)	All Races (N=41,821)
Cite and ID Booking	6.6%	6.4%	19.8%	16.2%	13.2%	12.1%
Standard Booking	86.5%	89.1%	67.2%	76.3%	77.5%	79.3%
Turn-self-in Booking	6.9%	4.5%	13.0%	7.5%	9.3%	8.5%

### 2007 Booking Types within Race

	African-American (N=8395)	Amer. Indian or Alaskan (N=781)	Asian (N=893)	Hispanic (N=4765)	White (N=24,626)	All Races (N=39,460)
Cite and ID Booking	5.4%	6.5%	16.5%	15.7%	12.8%	11.5%
Standard Booking	87.5%	88.2%	71.0%	74.9%	78.4%	79.9%
Turn-self-in Booking	7.1%	5.4%	12.5%	9.4%	8.9%	8.6%

### Standard Bookings by Race by Charge Level

The charge level relates to the booking type. Cite and ID bookings are not used for the charge levels of Felony, Misdemeanor, or for Ordinance/Infraction/Violation. About 50% of Cite and ID bookings have DUII as the primary (most serious) charge.

The table below is of Standard Bookings by Race by Charge Level: Felony, Misdemeanor, Ordinance/Infraction/Violation (combined), and Holds as the primary charge level.

For Standard bookings in both years, the African-American percentages were higher for Felony and Misdemeanor charges than their overall average for all charge levels. The Hispanic and White booked percentages were higher in the primary charge category of Hold than their overall average. (Holds include County, US Marshal, State, US Immigration, and Juvenile Holds.)

Percentages from 2006 were similar to 2007. Noticeable changes between years include an increase in African-American bookings for Ordinance/Infraction/Violation from 8.2% to 14.2% and a decrease in White bookings for Ordinance/Infraction/Violation from 72.0% to 68.6%.

### Standard Bookings by Race and Charge Level

Race	Felony		Misdemeanor		Ord/ Infract/ Viol		Holds		Total Bookings	
	2006 (N=14,071)	2007 (N=13,329)	2006 (N=11,685)	2007 (N=10,934)	2006 (N=522)	2007 (N=606)	2006 (N=6898)	2007 (N=6666)	2006 (N=33,176)	2007 (N=31,535)
African-American	28.8%	27.7%	24.4%	24.1%	8.2%	14.2%	13.4%	13.9%	23.8%	23.3%
Amer. Indian or Alaskan	1.5%	1.9%	2.4%	2.2%	13.6%	11.9%	1.6%	1.8%	2.0%	2.2%
Asian	1.9%	2.0%	2.2%	2.2%	0.4%	1.3%	1.4%	1.8%	1.9%	2.0%
Hispanic	7.9%	8.7%	11.0%	10.6%	5.7%	4.0%	18.0%	18.5%	11.0%	11.3%
White	59.9%	59.6%	60.0%	60.9%	72.0%	68.6%	65.6%	64.1%	61.3%	61.2%

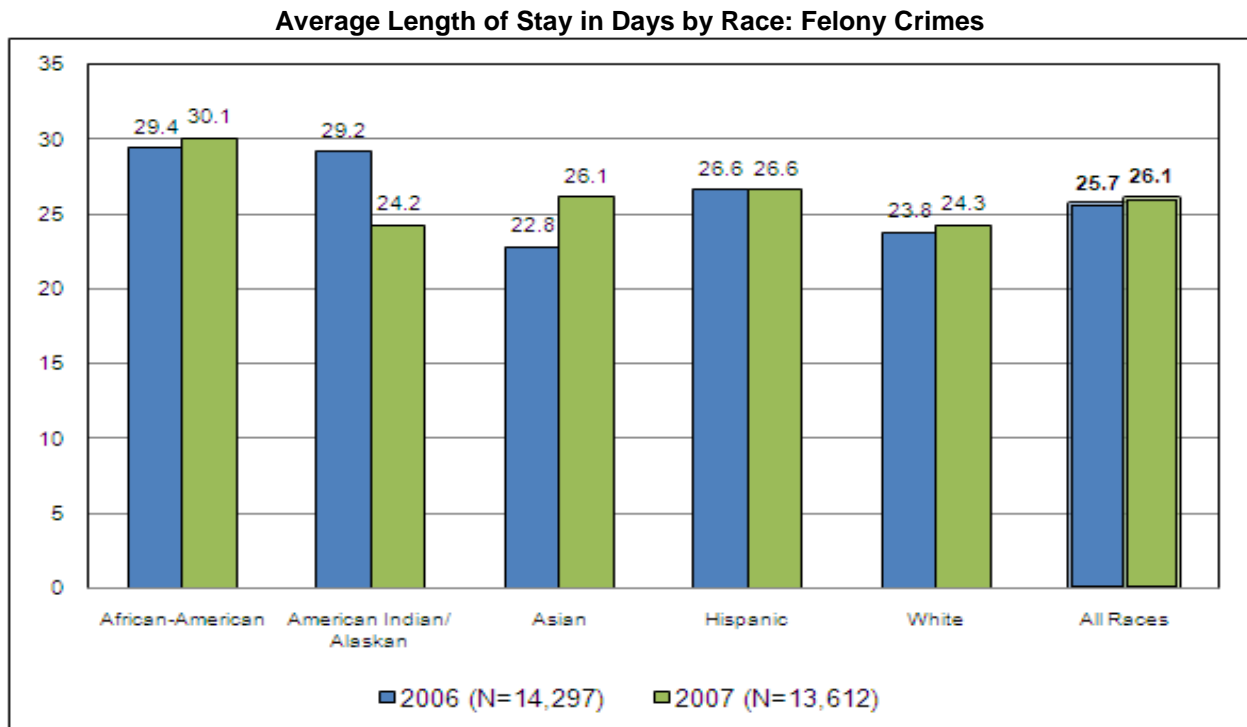
## Average Length of Stay (ALS)

Many factors relate to the ALS, including the crime charge and release reason. This report examines felony and misdemeanor charges by race, as well as variation in specific crime types. An analysis of the contribution of specific crime charges to the average length of stay by racial categories was not done for this report, as this complex issue requires a separate, more in depth analysis.

The ALS was determined for inmates permanently released between January 2006 and December 2007 and who were Standard booked. Note that this data is only for those *released* and does not take into account the length of stay of those who remain in jail.

### Average Length of Stay (ALS) by Race: Charge Type, Felony

Overall, ALS for felonies went up between 2006 and 2007 by less than one day. For both years, the released African-American inmates had the highest ALS for felonies.



When looking at all races, the ALS went up for all the crime categories except person crimes between 2006 and 2007. The ALS for felony person crimes increased in the race categories of African-American and Asian, but decreased for the other race categories.

The ALS for felony behavioral crimes increased for all race categories except American Indian/Alaskan. The almost 15 day reduction in ALS for this group is based on 4 releases in 2006 and 8 releases in 2007.

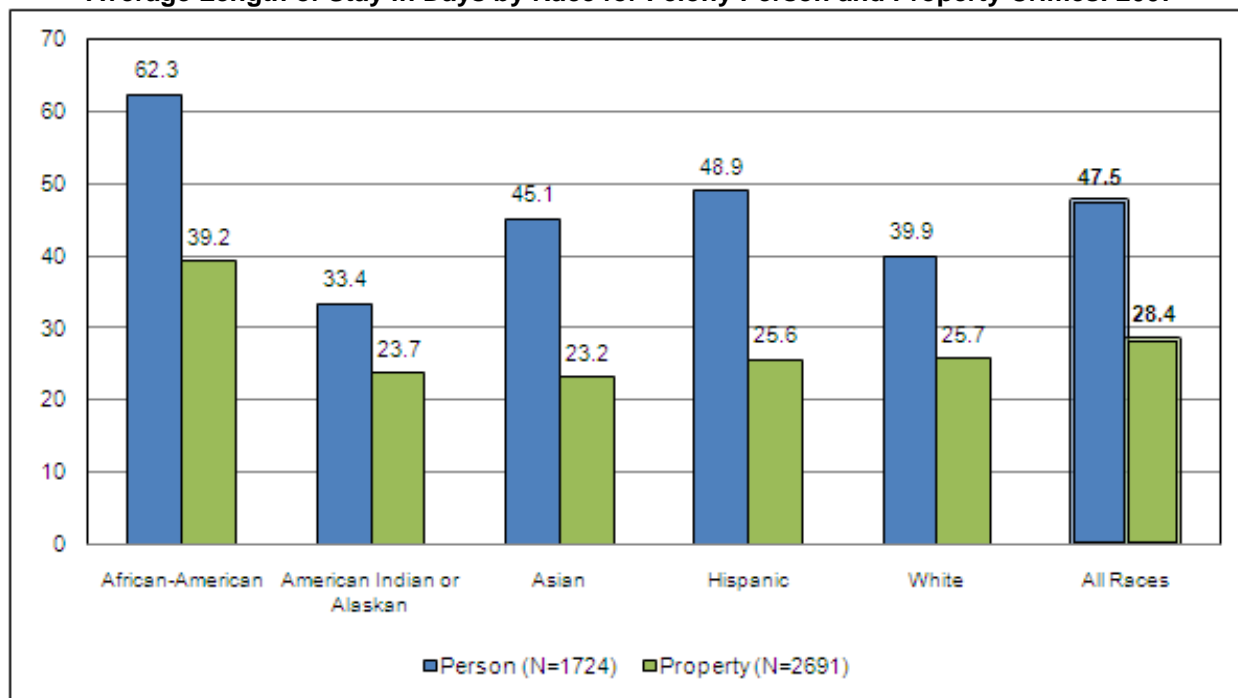
### Length of Stay (days): Felony Crimes

	African-American		Amer. Indian or Alaskan		Asian		Hispanic		White		All Races	
	2006 (N=4082)	2007 (N=3773)	2006 (N=216)	2007 (N=250)	2006 (N=279)	2007 (N=275)	2006 (N=1120)	2007 (N=1179)	2006 (N=8600)	2007 (N=8135)	2006 (N=14,302)	2007 (N=13,617)
Alcohol & Drugs	12.6	12.5	9.1	13.0	11.1	10.2	11.0	12.7	9.6	10.5	10.7	11.3
Behavioral	29.8	33.1	25.3	9.8	28.3	73.6	21.9	31.2	23.8	29.4	25.4	31.0
Other Charge	29.7	29.5	32.6	27.7	20.0	33.8	26.5	25.7	27.2	27.8	28.0	28.3
Person	58.0	62.3	46.8	33.4	37.1	45.1	50.5	48.9	50.4	39.9	51.9	47.5
Property	39.9	39.2	38.9	23.7	26.7	23.2	22.6	25.6	21.2	25.7	25.7	28.4
Vehicle	9.7	9.9	0.3	0.3	10.7	15.6	13.3	15.5	11.2	10.7	11.0	11.8
<b>Total</b>	<b>29.4</b>	<b>30.1</b>	<b>29.2</b>	<b>24.2</b>	<b>22.8</b>	<b>26.1</b>	<b>26.6</b>	<b>26.6</b>	<b>23.8</b>	<b>24.3</b>	<b>25.6</b>	<b>26.1</b>

*“Other charge” is largely parole violation, fugitive, and post prison supervision violation.*

Overall, the released African-American inmates had the highest ALS at approximately 30 days for felonies. In 2007, the ALS for felony person and property crimes was higher for African American inmates than for any other race category. The lowest ALS for felony person crimes was seen for American Indian/ Alaskan inmates and for felony property crimes was with Asian released inmates.

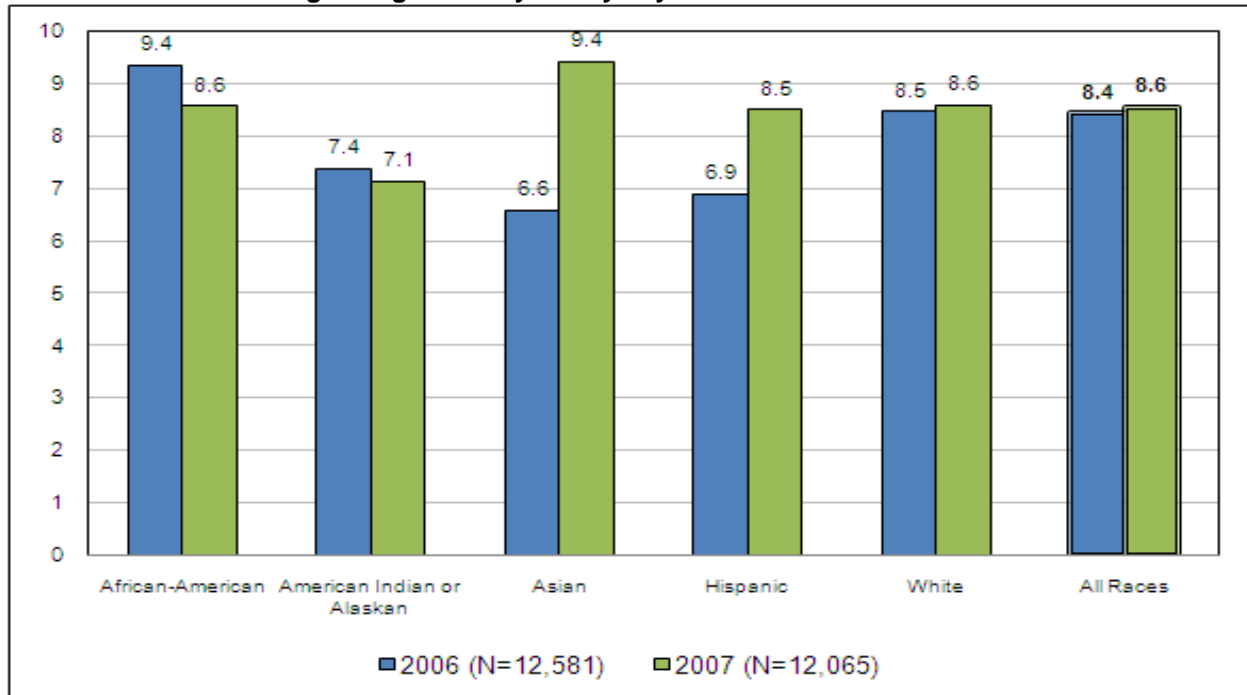
**Average Length of Stay in Days by Race for Felony Person and Property Crimes: 2007**



### Average Length of Stay (ALS) by Race: Charge Type, Misdemeanor

Overall, ALS stayed about the same at approximately 8.5 days for misdemeanor level crimes between 2006 and 2007. African-American and Asian inmates had the highest ALS in 2006 and 2007, respectively, for misdemeanor crimes.

**Average Length of Stay in Days by Race: Misdemeanor Crimes**



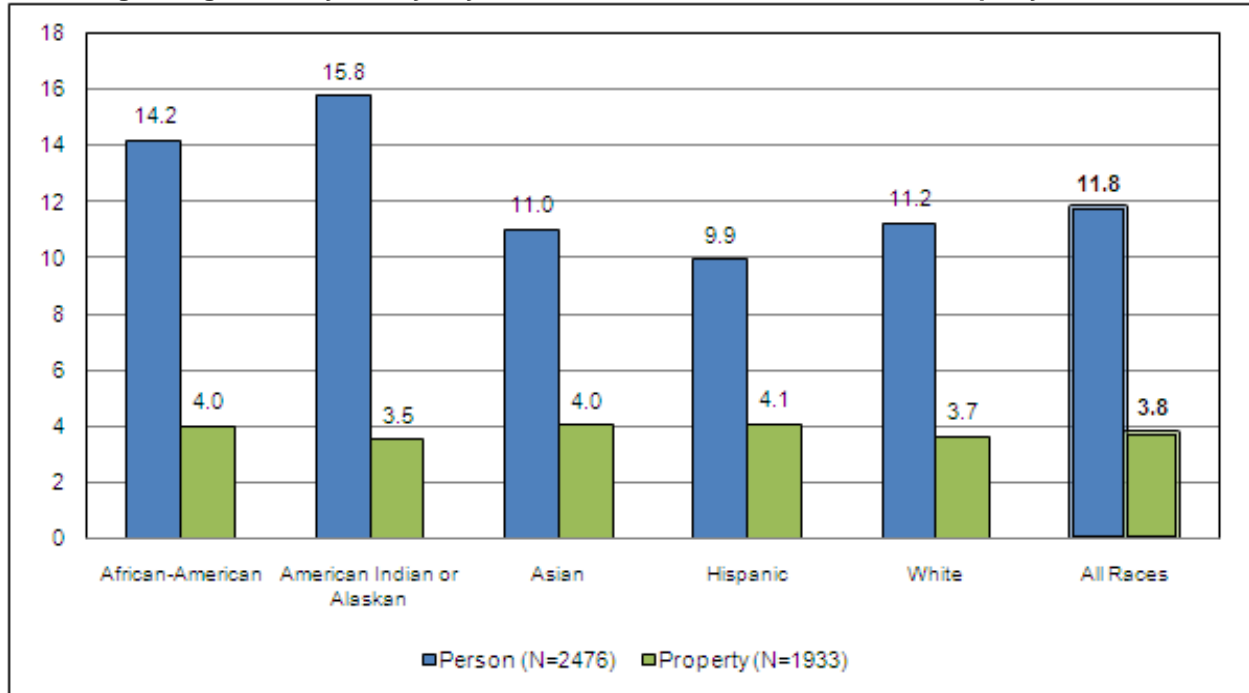
“Other Charge” misdemeanors are largely Restraining Order Violations and Contempt of Court and those with this primary charge type had the longest average stay in jail at approximately 16 days.

**Length of Stay (days): Misdemeanor Crimes**

	African-American		Amer. Indian or Alaskan		Asian		Hispanic		White		All Races	
	2006 (N=2954)	2007 (N=2788)	2006 (N=292)	2007 (N=258)	2006 (N=291)	2007 (N=272)	2006 (N=1414)	2007 (N=1330)	2006 (N=7630)	2007 (N=7417)	2006 (N=12,589)	2007 (N=12,075)
Alcohol & Drugs	5.5	4.1	3.4	1.8	1.4	7.7	4.4	3.0	4.9	3.6	5.1	3.8
Behavioral	6.5	6.0	6.1	3.8	2.3	4.1	3.5	6.0	7.9	7.5	6.9	6.8
Local	1.1	0.9	3.3	0.4	0.3		0.8	2.5	1.5	1.8	1.3	1.3
Other Charge	23.9	19.3	14.3	5.1	3.3	24.3	13.0	13.8	12.9	15.4	15.6	16.2
Person	12.8	14.2	8.3	15.8	6.2	11.0	10.5	9.9	11.3	11.2	11.4	11.8
Property	3.8	4.0	3.4	3.5	2.2	4.0	3.2	4.1	3.8	3.7	3.7	3.8
Vehicle	15.8	13.1	17.3	17.7	11.1	10.7	7.7	9.8	10.4	10.2	10.6	10.6
<b>Total</b>	<b>9.4</b>	<b>8.6</b>	<b>7.4</b>	<b>7.1</b>	<b>6.6</b>	<b>9.4</b>	<b>6.9</b>	<b>8.5</b>	<b>8.5</b>	<b>8.6</b>	<b>8.4</b>	<b>8.6</b>

In 2007, there were more misdemeanor than felony person crimes and the ALS for misdemeanor person crimes was over two weeks less than for felony person crimes. American Indian/ Alaskan inmates had the highest ALS for misdemeanor person crimes. Hispanic inmates had the shortest ALS for person misdemeanor crimes. The ALS for misdemeanor property crimes was relatively consistent among race categories, varying by less than 1 day.

**Average Length of Stay in Days by Race for Misdemeanor Person and Property Crimes: 2007**



## Reason for Release by Race

The reasons for release were compiled for inmates permanently released from January 2006 to December 2007. Cite and ID bookings were not included in the release reason table. Data are shown for the top six reasons for release, which account for over 70% of the releases each year.

Release reasons remained fairly consistent between 2006 and 2007.

Among the race categories, African-American inmates had the highest percent of releases for the reason Sentenced. Asian inmates were released due to Bail at a higher percent among the race categories. Hispanic inmates were more frequently released to the US Marshal than other race categories.

**2006 Reasons for Release by Race**

Release Reason	African-American (N=7882)	Amer. Indian or Alaskan (N=679)	Asian (N=656)	Hispanic (N=3722)	White (N=20,621)	All Races (N=33,583)
Sentenced	30.1%	24.9%	21.9%	16.8%	25.6%	25.6%
Released on Recog	19.1%	25.5%	18.1%	18.5%	18.8%	19.0%
Court	11.8%	8.3%	13.0%	8.9%	10.0%	10.3%
Bail	5.3%	3.6%	10.0%	8.0%	6.3%	6.3%
Pretrial Superv. Prog.	6.1%	3.8%	6.0%	4.1%	5.3%	5.3%
Trans to US Marshal	2.1%	2.0%	2.8%	12.9%	2.8%	3.8%
All Other Reasons	24.1%	30.7%	26.1%	29.0%	28.6%	27.6%

**2007 Reasons for Release by Race**

Release Reason	African-American (N=7447)	Amer. Indian or Alaskan (N=693)	Asian (N=665)	Hispanic (N=3724)	White (N=19,757)	All Races (N=32,304)
Sentenced	31.6%	24.2%	26.2%	19.1%	27.8%	27.5%
Released on Recog	20.0%	24.9%	20.1%	16.2%	19.8%	19.5%
Court	12.4%	9.5%	12.9%	11.6%	11.4%	11.6%
Bail	4.6%	2.4%	10.9%	8.1%	6.6%	6.3%
Pretrial Superv. Prog.	5.8%	7.3%	4.4%	4.7%	5.8%	5.7%
Trans to US Marshal	2.3%	4.7%	4.1%	15.0%	3.0%	4.3%
All Other Reasons	21.5%	25.6%	19.5%	23.7%	23.2%	22.8%

## Average Daily Population (ADP) and Housing Classification

The Sheriff's Office is responsible for providing supervision and housing of adult inmates in Multnomah County. Managing the jail population is based on information from many decision points along the criminal justice system. Bookings, charges, holds, and reasons for releasing an inmate culminate to form the jail population.

The Average Daily Population (ADP) is a count of the inmates in the jail system. This count is limited by the jail capacity or number of beds. The adult jail capacity in Multnomah County in 2006 was 1690. The capacity for the first six months of 2007 was also 1690, but in July, 57 beds were closed and the capacity dropped to 1633, where it remained for the rest of the year. The *average* capacity for 2007 was 1661 beds.

The ADP is calculated by taking a "snapshot," or census, of the jail's population on each day of interest, summing these daily population counts, and then dividing that by the number of days to achieve an average per day. The snapshot is taken at approximately 10:00 PM each day and identifies all offenders within the facilities at that time. The counts include occupied beds as well as persons in process on the booking floor.

When looking at the ADP from 2006 to 2007, the percentage of inmates by race category has changed by only one percentage point or less.

	African-American	Amer. Indian or Alaskan	Asian	Hispanic	White
<b>2006 Average</b>	27.6% (ADP=462)	1.6% (ADP=27)	1.7% (ADP=28)	11.9% (ADP=200)	57.2% (ADP=956)
<b>2007 Average</b>	26.6% (ADP=424)	1.7% (ADP=28)	2.1% (ADP=34)	12.8% (ADP=204)	56.7% (ADP=903)

The remaining descriptions of snapshot data will focus on the two remaining open facilities, the Multnomah County Detention Center (MCDC) and the Multnomah County Inverness Jail (MCIJ).

The Multnomah County Sheriff's Office Classification Unit interviews all inmates coming into the jails and determines the appropriate level of custody and the housing assignments for inmates. Each facility has housing units designated for each category of classification. Housing classifications vary to meet the security needs of the facility and the special needs of the inmate. General population housing is the majority of beds available in the system. In many instances, where it can be safely done, multiple classifications can be housed within the same housing unit. Because of the inability to determine the actual housing classification for each inmate *within* a unit, for the descriptive table below, the classification requiring the most supervision or of the greater risk to inmate / officer safety is used. The hierarchy used is as follows: Administrative Segregation, Discipline, and Mental Health/ Protective Custody.

The classification percentages for each of the facilities are based on jail population snapshots from each day of the calendar year. There have been few changes in classification percentages between 2006 and 2007, with the greatest variation seen in a reduction of Population Overflow and an increase in Worker housing units at MCDC.

<b>MCDC Classifications</b>	<b>2006</b> (Beds=676)	<b>2007</b> (Beds=596)
Administrative Segregation	3.5%	3.5%
Discipline	8.9%	8.7%
General	63.8%	63.7%
Medical	1.4%	1.6%
Mental Health	4.7%	5.2%
Population Overflow	4.9%	2.9%
Protective Custody / Mental Health	1.7%	2.4%
Psychiatric	1.5%	1.7%
Worker/Outside Worker	9.3%	10.2%
<b>MCIJ Classifications</b>	<b>2006</b> (Beds=1014)	<b>2007</b> (Beds=1037)
Discipline	3.0%	2.9%
Discipline / Pop Overflow	2.2%	1.8%
General	73.9%	73.7%
Medical	1.0%	0.9%
Mental Health	6.4%	6.8%
Mental Health / Vulnerable	6.4%	6.3%
Worker/Outside Worker	7.2%	7.6%

*\*Does not include inmates in other status such as being released or transferred. Bed numbers are as of July 1 of that year.*

### **Housing Classification by Race by MCDC and MCIJ**

In 2006 and 2007, at MCDC, the percentage of White inmates in Administrative Segregation, Medical, Mental Health, Protective Custody, and Psych housing was higher when compared to the percentage in General population housing. These same housing units had a lower percentage of African American and Hispanic inmates compared to their percentages in General population housing.

Between 2006 and 2007, the percentage of African American inmates in Disciplinary housing increased from 34.5% to 40.3%. During the same time period, the percentage of White inmates in Disciplinary housing decreased from 56.8% to 48.3%.

### **2006 Housing Classification by Race: MCDC**

	<b>Admin Seg.</b>	<b>Discipline</b>	<b>General</b>	<b>Medical</b>	<b>Mental Health</b>	<b>Pop Overflow</b>	<b>Protect Cust/MH</b>	<b>Psych</b>	<b>Worker</b>	<b>Total MCDC</b>
<b>Race</b>	~21 beds	~54 beds	~389 beds	~9 day	~28 beds	~30 beds	~10 beds	~9 beds	~58 beds	~609 beds
African-American	26.5%	34.5%	31.0%	11.6%	26.6%	29.8%	24.3%	20.2%	30.6%	30.3%
Amer. Indian or Alaskan	1.5%	0.7%	1.4%	1.4%	1.4%	1.8%	4.2%	0.0%	1.2%	1.4%
Asian	4.8%	0.9%	1.7%	6.7%	0.5%	1.9%	2.2%	0.5%	1.7%	1.7%
Hispanic	4.2%	7.2%	10.7%	8.9%	4.7%	12.3%	6.5%	2.7%	10.8%	9.7%
White	63.0%	56.8%	55.2%	71.4%	66.8%	54.2%	62.8%	76.6%	55.7%	56.8%

**2007 Housing Classification by Race: MCDC**

	Admin Seg.	Discipline	General	Medical	Mental Health	Pop Overflow	Protect Cust/MH	Psych	Worker	Total MCDC
<b>Race</b>	~20 beds	~48 beds	~351 beds	~9 beds	~29 beds	~16 beds	~13 beds	~9 beds	~56 beds	~551 beds
African-American	26.4%	40.3%	30.6%	18.5%	23.7%	30.1%	30.0%	20.5%	26.6%	30.1%
Amer. Indian or Alaskan	6.6%	0.9%	1.8%	1.2%	1.5%	2.5%	1.4%	0.7%	1.1%	1.8%
Asian	3.1%	1.2%	1.9%	2.1%	2.5%	2.0%	1.4%	6.1%	1.9%	2.0%
Hispanic	4.0%	9.4%	11.5%	7.4%	4.6%	11.4%	6.9%	3.7%	13.5%	10.6%
White	59.8%	48.3%	54.2%	70.8%	67.8%	54.0%	60.3%	69.0%	56.9%	55.5%

Similar to MCDC, MCIJ had a higher percentage of White inmates housed in Medical, Mental Health, and Mental Health/Vulnerable units compared to the percentage in General population housing in 2006 and 2007.

A higher percentage of African American inmates were housed in Discipline and Discipline/Population Overflow housing compared to the percentage in General population housing units.

MCIJ also had lower percentages of Hispanic inmates housed in any non-General population housing compared to General population housing.

**2006 Housing Classification by Race: MCIJ**

	Discipline	Disc./Pop Overflow	General	Medical	Mental Health	MH/Vulnerable	Worker	Total MCIJ
<b>Race</b>	~30 beds	~22 beds	~745 beds	~10 beds	~65 beds	~65 beds	~73 beds	~1008 beds
African-American	35.4%	29.9%	27.6%	17.9%	12.4%	24.9%	23.3%	26.3%
Amer. Indian or Alaskan	1.3%	2.0%	1.7%	8.2%	1.4%	3.0%	1.4%	1.8%
Asian	2.2%	1.0%	1.5%	2.6%	1.5%	2.0%	2.5%	1.6%
Hispanic	12.1%	2.6%	15.1%	4.8%	7.2%	7.2%	10.4%	13.3%
White	49.0%	64.5%	54.1%	66.5%	77.4%	62.9%	62.3%	57.0%

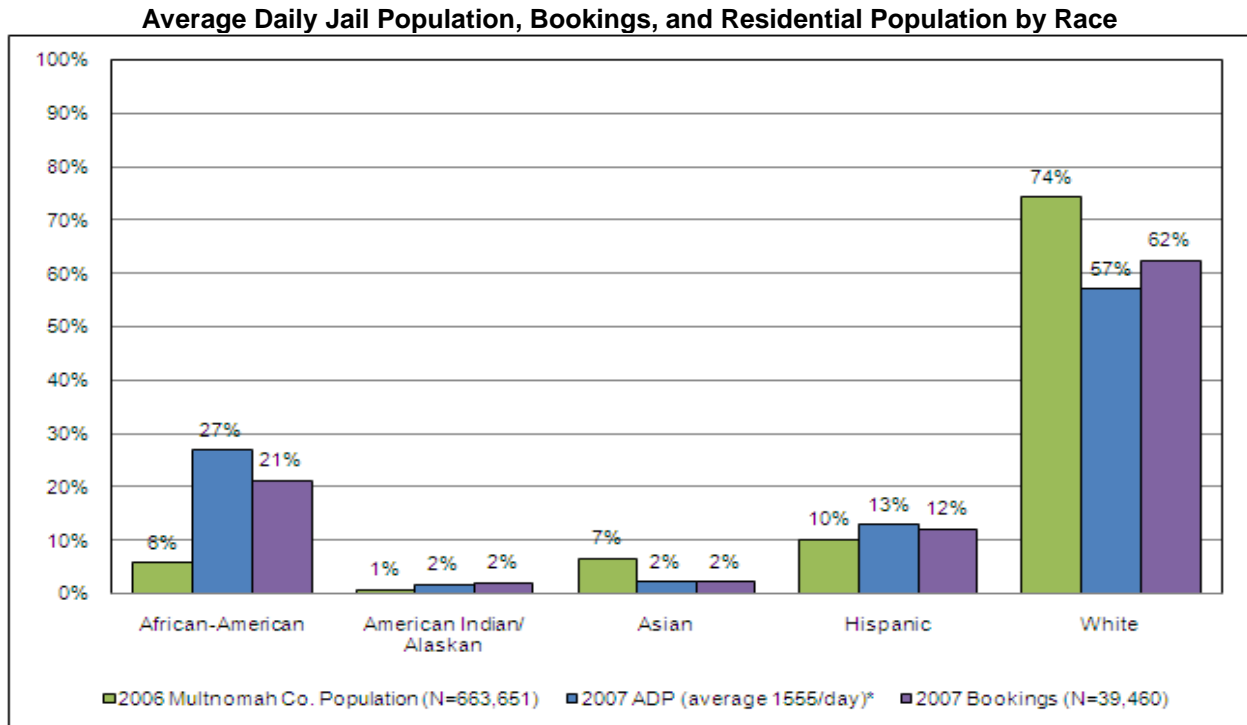
**2007 Housing Classification by Race: MCIJ**

	Discipline	Disc./Pop Overflow	General	Medical	Mental Health	MH/Vulnerable	Worker	Total MCIJ
<b>Race</b>	~29 beds	~19 beds	~740 beds	~9 beds	~68 beds	~64 beds	~76 beds	~1004 beds
African-American	32.0%	32.4%	26.8%	18.6%	16.4%	19.5%	16.4%	25.0%
Amer. Indian or Alaskan	1.4%	2.3%	1.7%	2.3%	2.4%	1.7%	1.0%	1.7%
Asian	2.1%	1.8%	2.3%	0.3%	2.1%	1.8%	1.7%	2.2%
Hispanic	14.8%	2.0%	15.3%	4.3%	13.1%	9.4%	10.3%	14.1%
White	49.8%	61.6%	53.8%	74.5%	65.9%	67.5%	70.5%	57.0%

### Housing Classification by Race by Combined Adult Jail Facilities

Comparing the 2007 average daily population of both adult jail facilities (MCDC and MCIJ) by race, to the booking and residential populations, the percentage of White inmates in the jails is lower than both the percentages of White bookings and the White residential population. The African-American percentage of the adult jail population is higher than the percentage booked or in the County residential population. This is also true for the Hispanic inmate jail population.

This further indicates the factors - beyond bookings, but including length of stay - which influence the overall jail population.



\*MCDC and MCIJ only. Does not include 33 days inmates were in other facilities.

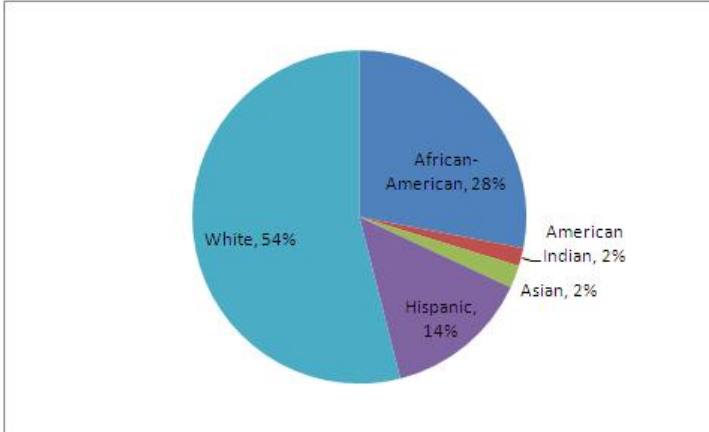
Looking at the adult jail facilities housing classification indicates that General population housing, which comprises about 70% of the units, has race percentages similar to the total facilities percentages.

**2007 Average Daily Population Percentages**

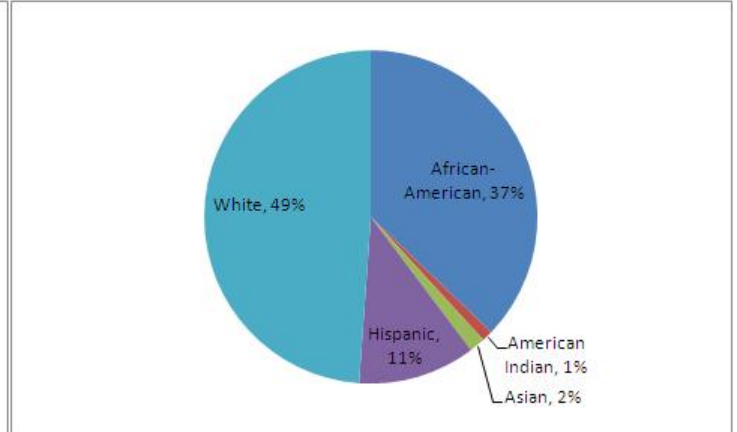
	African-American	Amer. Indian or Alaskan	Asian	Hispanic	White
<b>Overall Jail Population</b>	26.8%	1.7%	2.1%	12.8%	56.5%
<b>General Housing Population</b>	28.0%	1.7%	2.2%	14.1%	54.0%

Comparing General population housing to Discipline housing showed that African-Americans were 28% of General population housing, but 37% of the Discipline housing. Mental housing had 67% White inmates and Worker housing had 64% White inmates, which are both higher than the 54% in General population housing. African-American inmates were 21% and Hispanic inmates were 12% of Worker housing, both below their percentages in General population housing.

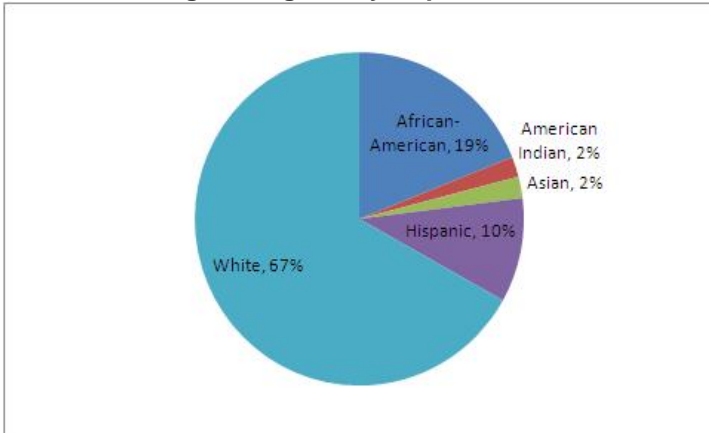
**General Housing Average Daily Population**



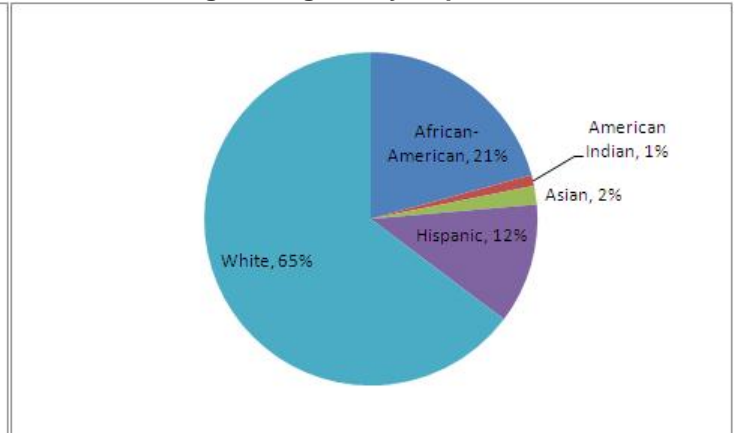
**Discipline Housing Average Daily Population**



**Mental Housing Average Daily Population**



**Worker Housing Average Daily Population**



## Summary

This report provides data for certain decision points along the criminal justice system that impact who is in jail and where they are housed. Examples of decision points are: Cite and ID versus booking, reasons for permanent release (recog, bail), and housing type. Other data, such as length of stay, represent the culmination of many decision points – the decision to book, the decision to hold or not hold in jail pre-trial, and court-ordered sentence length. Most decision points take into account factors which include the circumstance (crime committed, criminal history) and/or the behavior of the person.

All decisions points - arrests, charges filed, booking, pre-trial holds, hearings, sentencing, housing - contribute to the jail population. The Multnomah County Sheriff's Office jail facilities are one part of a criminal justice system which also includes other law enforcement agencies, courts, and community justice (juvenile, parole and probation). It is the operation of the criminal justice system as a whole that ultimately drives the composition of the jail population.

*The Examination of the Adult Jail Population by Race, 2007*, indicates a higher percentage of bookings and percentage of the population in jail among African-American, American Indian/Alaskan and Hispanic persons compared to the general population of Multnomah County.

The average length of stay (ALS), shown for felonies and misdemeanors by charge type, is an area where comparisons between race categories are not based on a percentage, but on actual number of days. Since the ALS data is not a percentage, it offers a look different than the other data presented because as percentages total 100%, any change in one group changes the data in another group. In 2006 and 2007, African-American inmates had the highest ALS for felonies. In 2006, African-American inmates also had the highest length of stay for misdemeanor crimes. Asian inmates had the highest length of stay for misdemeanors in 2007.

Housing classification in adult jail facilities indicates Discipline housing had a higher percentage of African-American inmates, compared to the percentage in General population housing. The percentage of White inmates in Medical, Mental, Protective Custody, Psych, and Worker housing was higher than the percentage in General population housing.

The Multnomah County Sheriff's Office is committed to the safe, secure and constitutional management of its jails. MCSO manages this population through booking policy, inmate risk classification, and emergency population release without regard to the racial background of individual inmates. These means are used to manage the demand for jail beds to house various levels of offenders, in order to maintain a safe environment in support of public safety objectives. Part of the Sheriff's Office commitment to responsibly manage the jails is to proactively look at racial data to encourage public safety leaders to continue discussing racial overrepresentation in the criminal justice system.