

Multnomah County Sheriff's Office

An Examination of the
Adult Jail Population by Race

With Calendar year Comparisons - 2005 & 2006

FEBRUARY 2007



BERNIE GIUSTO
SHERIFF

503 988-4300 PHONE
503 988-4500 TTY
www.sheriff-mcso.org

501 SE HAWTHORNE BLVD., SUITE 350 • PORTLAND, OR 97214

Introduction

This report compares the racial composition of the adult inmate population within Multnomah County Jails for calendar years 2005 and 2006. Comparisons are also made to the County's overall racial composition as identified in the U.S. Census Bureau's "2005 American Community Survey" (<http://www.census.gov/acs/>).

Data was based on bookings from January 1st, 2005 through December 31st, 2006. In some instances and, where identified, findings were based on snapshots of racial composition taken on specific dates during the time period. The report examines booking type, average length of stay, and reasons for release of inmates as they pertain to race.

Special Considerations

When reviewing this report, it must be understood that that the scope of this report *does not* take into account the following characteristics:

- Economic status or educational background of the persons booked,
- Arrest location,
- Arresting agency,
- Patrol density, or
- Special operations in which a person may be arrested.

In addition, data in this report represent the total number of bookings and not the number of individuals booked. Some persons were booked multiple times as seen below:

Year	Number of Bookings	Number of Persons Booked	Avg. Books per Person
2005	42614	24539	1.74
2006	41986	25263	1.66

The numbers of persons booked vary between the different reporting mechanisms available to acquire this information. However, this is minimal ($\pm 0.2\%$). The reason is that some reported booking numbers are static and do not reflect changes to booking or charge status over time, or take into account corrections made to errors in booking records. All efforts were made to use the most accurate data mining methodologies available, examining the most up to date booking records.

In very few instances, either the race or gender was listed as "unknown." These records accounted for less than 0.03% of all data and thus were not included when determining racial or gender population percentages. In addition, the "2005 American County Survey" listed 3.4% of the county's population as Other or, 2 or More Races, thus County population percentages listed will not equal 100%

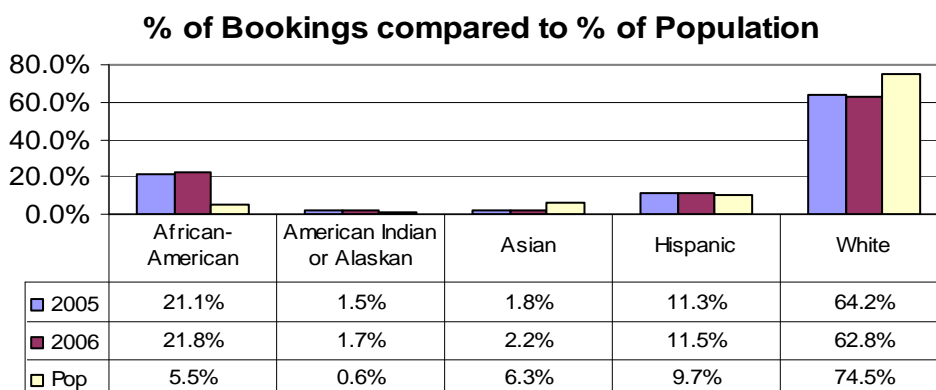
The booking types used to determine who should be included in this report are:

- **Standard** – This is the full booking process following an arrest and will lead to the offender being housed unless some release mechanism is utilized such as posting bail or release on own recognizance (ROR).
- **Cite & ID** – The offender is only processed to the point of ensuring that they are properly identified, then given a citation and released.
- **Turn Self In (TSI)** - The offender has been tried and sentenced to intermittent jail time, usually weekends, until all sentenced time is served.

Bookings by Race Overview

In both years studied, booking percentages for African Americans, Hispanics and American Indian/Alaskans exceeded their County population percentages, while Whites and Asians fell below County averages. African American bookings in 2006 were nearly 4 times the County percentages for their race. In 2006, booking percentages for all races increased between 0.2% and 0.7% with the exception of Whites where booking percentages fell 1.4%.

The chart below sums all bookings by race and compares them to the residential population estimates.



Booking Types by Race

The following table breaks out bookings by race and booking method used. When compared to the residential population estimates for the County, African American, American Indian/Alaskan and Hispanic arrestees exceed population percentages in all booking types.

The data also shows a shift in booking types between 2005 and 2006. In 2006, Cite and ID Bookings dropped for African Americans, American Indian/Alaskan and Hispanics, while increasing for Asians and Whites. At the same time, Standard bookings percentages increased for all races with the exception of Whites where there was a 2.5% decrease. In overall percentages, the same trend can be seen as well.

All Bookings by Race

		Race (% of population)	African-American (5.5%)	Amer. Indian or Alaskan (0.6%)	Asian (6.3%)	Hispanic (9.7%)	White (74.5%)
2005	Cite and ID Booking		15.7%	1.1%	2.9%	15.9%	64.4%
	Standard Booking		22.4%	1.7%	1.5%	10.5%	63.9%
	Turn-self-in Booking		17.9%	0.7%	2.7%	11.2%	67.5%
	2005 Totals		21.1%	1.5%	1.8%	11.3%	64.2%
2006	Cite and ID Booking		11.8%	0.9%	3.5%	15.3%	68.4%
	Standard Booking		23.8%	1.9%	1.8%	11.0%	61.4%
	Turn-self-in Booking		17.7%	0.8%	3.3%	10.1%	68.1%
	2006 Totals		21.8%	1.7%	2.2%	11.5%	62.8%

The same shift in Standard bookings can be seen when looking at how different booking methods were applied *within* each race. By viewing the same data in this manner you can see that the shift from Cite and ID to Standard bookings was most dominant with African Americans, with only a subtle shift in Standard bookings and Cite and ID for Whites.

	Booking Types within Race					
	Standard Booking		Cite and ID Booking		Turn-self-in Booking	
	2005	2006	2005	2006	2005	2006
African-American	83.0%	86.6%	10.0%	6.5%	7.0%	6.9%
Amer. Indian or Alaskan	87.1%	89.2%	9.4%	6.8%	3.5%	4.0%
Asian	65.7%	67.3%	21.9%	19.6%	12.3%	13.0%
Hispanic	73.0%	76.2%	18.9%	16.2%	8.1%	7.5%
White	77.9%	77.6%	13.5%	13.2%	8.6%	9.2%

Bookings by Race and Gender

Overall, approximately 20% of bookings each year were of females (2005; 20.4%, 2006; 20.6%) In both years, American Indian/Alaskan and White females are booked at a relatively higher rate than males. Asian and Hispanic females are booked at a lower rate than males. African American females and males are booked at almost the same rate.

	Female		Male	
	2005	2006	2005	2006
African-American	21.0%	22.1%	21.2%	21.8%
American Indian or Alaskan	2.2%	2.4%	1.4%	1.5%
Asian	1.2%	1.6%	1.9%	2.3%
Hispanic	3.6%	3.7%	13.3%	13.5%
White	72.0%	70.1%	62.2%	60.9%

When further detailed by book type, the trends that were shown when looking only by race generally hold true when breaking the data down by gender. Only minor variations to the higher level view can be seen when including gender, such as the percentages of Cite and IDs went down for American Indian/Alaskan Females by 50% while there was a slight increasing for males for this book type.

Gender	Race	African-American		Amer. Indian or Alaskan		Asian		Hispanic		White	
		2005	2006	2005	2006	2005	2006	2005	2006	2005	2006
Female	Cite and ID Booking	15.7%	13.3%	2.2%	1.1%	2.0%	2.3%	5.8%	5.6%	74.3%	77.7%
	Standard Booking	22.6%	24.1%	2.4%	2.8%	0.8%	1.5%	3.1%	3.4%	71.0%	68.3%
	Turn-self-in Booking	17.5%	19.6%	0.8%	1.3%	2.2%	2.0%	3.7%	3.1%	75.9%	74.1%
Male	Cite and ID Booking	15.8%	11.3%	0.7%	0.9%	3.2%	3.9%	19.2%	18.4%	61.1%	65.5%
	Standard Booking	22.3%	23.8%	1.5%	1.6%	1.7%	1.9%	12.3%	12.9%	62.1%	59.7%
	Turn-self-in Booking	18.1%	17.1%	0.6%	0.6%	2.8%	3.7%	13.3%	12.3%	65.1%	66.2%

Standard Bookings by Race by Charge Level

The table below is of Standard Bookings by Race by Charge Level: Felony, Misdemeanor, Holds, and Ordinance/Infractions/Violations (combined) as the primary (most serious) charge. For Standard bookings in both years, the African American percentages were significantly higher for Felony and Misdemeanor charges than their overall average. The Hispanic and White booked percentages were notably higher in the primary charge category of Hold than their overall average. (Holds include County, US Marshal, State, US Immigration, and Juvenile Holds.)

There were some noticeable changes in 2006:

- White Ordinance/Infractions/Violation bookings (higher by 8.1%)
- African American Felony bookings (higher by 3.4%)
- Hispanic Ordinance/Infractions/Violation bookings (down by 2.9%)
- White Felony bookings (down 3.8%)
- White Hold Bookings (down 3.1%)

Charge Level	African-American		Amer. Indian or Alaskan		Asian		Hispanic		White	
	2005	2006	2005	2006	2005	2006	2005	2006	2005	2006
Felony	25.5%	28.9%	1.3%	1.4%	1.4%	1.9%	8.0%	7.9%	63.7%	59.9%
Misdemeanor	25.6%	24.5%	1.8%	2.2%	1.6%	2.1%	10.3%	11.0%	60.6%	60.1%
Ord/Infract /Viol	8.6%	8.6%	17.0%	12.6%	1.2%	0.4%	8.6%	5.7%	64.5%	72.6%
Hold Bookings	12.3%	13.4%	1.5%	1.5%	1.4%	1.4%	15.9%	17.8%	68.9%	65.8%
% of All Bookings*	22.4%	23.8%	1.7%	1.9%	1.5%	1.8%	10.5%	11.0%	63.9%	61.4%

* % of All Bookings is equal to % of Standard bookings as seen in table on page 2

Average Length of Stay (ALS)

The ALS was determined for inmates released between January 1, 2005 and December 31, 2006 and who were standard booked. Note that this data is only for those *released* and does not take into account the length of stay of those who remained in jail. The data are shown below by felony and misdemeanor crime types and includes sentenced and unsentenced inmates.

ALS by Race: Charge Type, Felony

Overall, ALS for felonies dropped from 2005 to 2006 for each race with the exception of American Indian/Alaskan. For this group, longer stays for Behavioral, Person and Other Charge crime types were the contributors to lengthening the average. However, the American Indian/Alaskan group was only a small percentage of felony bookings in each year (1.3% in 2005, 1.4% in 2006). The same applies to felony bookings for Asians where their small percentages (1.4% 2005, 1.9% 2006) contributed to greater fluctuations in their ALS numbers. Hispanics (8.0% and 7.8%) were the only group where ALS increased for felony Alcohol and Drug charges.

ALS for person crimes dropped considerably across all race lines with the exception of American Indian/Alaskan. ALS for felony person crimes dropped anywhere from 11.74 days for African Americans to 21.07 days for Hispanics

Felony Length of Stay (days)

	African-American		Amer. Indian or Alaskan		Asian		Hispanic		White		All Race	
	2005	2006	2005	2006	2005	2006	2005	2006	2005	2006	2005	2006
	Alcohol & Drugs	13.00	12.11	15.57	9.98	13.03	8.05	8.02	11.24	10.42	9.16	12.01
Behavioral	28.54	26.18	13.65	25.26	49.01	26.14	19.89	16.58	24.30	21.48	24.44	23.13
Other Charge	29.84	28.09	24.87	35.31	22.99	20.44	27.66	24.19	26.48	26.22	27.12	26.85
Person	50.20	38.46	36.05	54.96	40.90	25.48	53.22	32.15	44.59	32.65	41.06	36.74
Property	39.93	28.96	32.38	24.88	14.75	15.34	20.15	20.55	21.78	19.46	23.44	21.84
Vehicle	12.03	11.76		0.26	0.49	9.23	22.25	7.83	14.22	11.54	12.83	8.13
Total	30.02	24.35	26.47	29.03	25.39	17.12	25.59	20.33	23.47	20.73	23.63	22.31

“Other charge” is largely parole violation, fugitive, and post prison supervision violation.

Average Length of Stay (ALS) by Race: Charge Type, Misdemeanor

“Local” misdemeanor charges include Violating a Drug Free Zone and Violating a Prostitution Free Zone. “Other Charge” misdemeanors are largely Restraining Order Violations and Contempt of Court. Those with “Other Charge” as a primary crime type had the longest average stay in jail. Overall, ALS dropped nearly a day from 2005 to 2006.

It should be noted that the same dynamics seen in felony ALS in regards to races booked in smaller percentages generally show greater fluctuation from year to year. As an example, American Indian/Alaskans comprised only 1.9% of Misdemeanor bookings in 2005 and 2.2% in 2006. In each year, there were 20 persons booked for Alcohol and Drugs. One extended stay of 75 days for an individual in 2005 created a 7.27 day difference in ALS for this crime type.

Misdemeanor Length of Stay (days)

	African-American		Amer. Indian or Alaskan		Asian		Hispanic		White		All Race	
	2005	2006	2005	2006	2005	2006	2005	2006	2005	2006	2005	2006
	Alcohol & Drugs	7.25	5.13	10.41	3.14	3.82	1.60	5.79	3.14	6.07	3.70	5.46
Behavioral	8.22	6.34	3.03	5.99	1.67	2.42	6.08	3.57	8.36	7.13	7.08	5.09
Local	0.78	1.09	4.45	1.07	0.10	0.26	0.73	0.84	1.16	1.48	1.08	0.95
Other Charge	18.12	22.66	12.60	13.47	12.14	1.65	17.57	10.02	13.40	12.27	14.64	12.01
Person	12.26	11.90	22.27	5.90	3.26	6.33	10.27	9.28	11.37	10.27	10.87	8.73
Property	3.81	4.04	3.42	2.55	5.03	2.25	2.63	2.86	3.61	3.69	3.61	3.08
Vehicle	13.32	12.44	9.47	21.50	12.00	12.62	6.53	7.54	11.87	10.75	10.72	12.97
Total	8.42	8.40	9.07	6.96	6.03	6.40	7.11	6.28	8.80	7.85	8.12	7.18

Reason for Release by Race

The reasons for release were compiled for inmates permanently released within the time period. The data are shown below for the top seven reasons for release, which account for roughly 70% of the releases each year. Another approximately 18% of releases were due to transfer to other agencies including state correctional facilities and the U.S. Marshal.

The booking type used, primarily Standard book or Cite and ID, is reflected in release types used. As seen earlier, there was an increase in standard bookings for African Americans while Standard bookings decreased for Whites. The release types of Sentenced and Released on Recog increased for African Americans while decreasing for Whites. The converse is true for Cite and ID bookings and Cite and ID releases. Both instances show a direct correlation to the shift in booking methodologies which occurred for each of the races.

Rel. Rsn	African-American		Amer. Indian or Alaskan		Asian		Hispanic		White	
	2005	2006	2005	2006	2005	2006	2005	2006	2005	2006
Sentenced	31.8%	35.9%	28.2%	30.8%	22.2%	22.3%	19.2%	20.2%	27.7%	29.2%
Released on Recog	22.2%	22.8%	32.6%	32.0%	15.3%	16.5%	17.9%	22.2%	21.0%	21.2%
Cite and ID	14.3%	9.1%	12.9%	10.0%	29.3%	26.2%	28.1%	24.7%	19.6%	18.8%
Court	13.9%	13.9%	11.9%	10.8%	12.7%	12.6%	10.1%	10.8%	11.9%	11.2%
Bail	5.6%	6.3%	2.3%	4.4%	10.2%	10.1%	6.9%	9.6%	5.7%	7.2%
Sheriff's Release on Recog	11.2%	4.8%	11.4%	7.6%	9.0%	6.4%	17.3%	7.5%	13.4%	6.4%
Pretrial Supervision Prog.	1.1%	7.2%	0.6%	4.4%	1.2%	6.1%	0.6%	5.0%	0.7%	5.9%

Average Daily Populations (ADP)

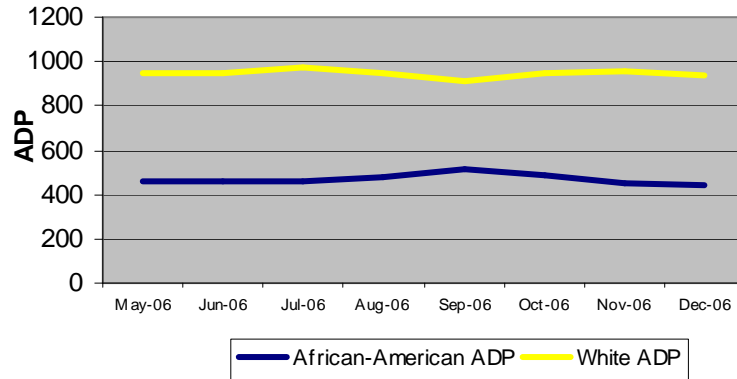
The ADP is calculated by taking a snapshot of the jail's population each day for the period. The snapshot is taken at approximately 10:00 PM each day and identifies all offenders within the facilities at that time. The total count by race for each year is then divided by the number of days in the year to achieve the Average Daily Population. The counts include occupied beds as well as persons in process on the booking floor of MCDC.

ADP Overall

Over the two years being reported, a slight change by race can be seen with ADP for Whites dropping 2.6% while African American and Hispanic ADP has risen 1.6% and 1% respectively.

	African-American	Amer. Indian or Alaskan	Asian	Hispanic	White
2005 Avg.	26.0%	1.7%	1.7%	10.9%	59.8%
2006 Avg.	27.6%	1.6%	1.7%	11.9%	57.2%

While Hispanic ADP was consistently higher throughout 2006, August, September and October showed a greater influx of African Americans into the population thus the contributing factor to the increase in their annual ADP. This had the greatest impact on White ADP. The correlation between the increase in African American ADP and decrease in White ADP is illustrated in the following graph.



Jail Snapshot

The ADP listed previously is the average throughout the calendar year. The following data are from snapshots, examining the population on a single day including by housing classification. Housing unit classifications vary frequently during the course of a year in order to meet the security needs of the facility. As an example, if larger numbers of offenders are booked that pose a greater safety risk, modifications to the housing scheme must be made to accommodate them.

Because of this flexibility in housing assignments, showing an annual ADP by classification is not possible. Thus we examine a single, randomly selected date to view the racial composition of each facility by housing classification. Since certain factors were considered to cause variance from normal housing levels, some dates were deemed ineligible for selection. Dates not considered for selection were:

- Fridays, Saturdays, and Sundays
- Holidays
- Special events (Rose Festival, Fat Tuesday, etc)
- Special operations (Police stings, sweeps, etc)

In addition, facilities must be at or above 90% capacity. Following this criteria, the date chosen was August 17th of each year.

Housing differences, 2005 and 2006

On this date in 2005, there were three facilities in operation; MCCF, MCDC and MCIJ, with a total capacity of 1,519 available beds. In 2006, MCCF was closed leaving two facilities in operation with a total capacity of 1,690. Also in 2005:

- One floor of MCDC was closed while a jail electronics upgrade was in progress. Total beds closed equaled 156, or the number of inmates housed at MCCF.
- MCCF housed the offenders that belonged to the Inmate Workcrews. Within the classifications later discussed, workcrew offenders are grouped within the “General” classification.
- 3 dorms (171 beds total) were closed at MCIJ due to budgetary constraints.

In 2006:

- Inmate Workcrews moved back to MCIJ upon closure of MCCF.
- All housing units at MCIJ were open, utilizing the full capacity of the facility.
- All floors and modules at MCDC are open. The 156 beds reopened compensated for the movement of the workcrews back to MCIJ beds.

The table below shows the racial composition of each facility on the snapshot date. In 2006, the two remaining facilities saw a decrease in the percentage of Whites housed while MCIJ saw a percentage increase in the number of African Americans.

Facility	Year	African-American	American Indian or Alaskan	Asian	Hispanic	White	Total Number of Offenders
MCCF	2005	38 (24.36%)	3 (1.92%)	2 (1.28%)	18 (11.54%)	95 (60.90%)	155
	2006	148 (31.36%)	8 (1.69%)	6 (1.27%)	30 (6.36%)	280 (59.32%)	474
MCDC	2005	185 (31.25%)	9 (1.52%)	12 (2.03%)	57 (9.63%)	329 (55.57%)	592
	2006	223 (26.48%)	14 (1.66%)	16 (1.90%)	99 (11.76%)	490 (58.19%)	842
MCIJ	2005	285 (28.22%)	18 (1.78%)	15 (1.49%)	118 (11.68%)	574 (56.83%)	1010
	2006						

Racial Composition by Facility and Classification

As MCCF is now closed and will not reopen, the remaining portion of snapshot data will focus on the two remaining facilities, MCDC and MCIJ.

The classifications are listed below for each of the facilities as they were on the snapshot dates. As can be seen, General population housing is the majority of beds available in the system. In many instances, where it can be safely done, multiple classifications can be housed within the same housing unit. Because of the inability to determine the actual housing classification for each inmate within a unit, the classification requiring the most supervision or of the greater risk to inmate / officer safety is used.

As stated previously, housing classifications vary frequently during the course of a year in order to meet the security needs of the facility. The fluctuations in facility housing needs can be seen between the 2005 and 2006 percentages.

MCDC Classifications	2005	2006
Administrative Segregation	4.0%	3.1%
Discipline	16.4%	12.7%
General	62.7%	64.9%
Medical	1.7%	1.3%
Mental Health	7.1%	5.5%
Population Overflow*		6.2%
Protective Custody / Mental Health	8.1%	6.3%
MCIJ Classifications	2005	2006
Discipline	3.7%	3.1%
Discipline / Pop Overflow	2.7%	2.3%
General	77.0%	80.9%
Medical	1.2%	1.0%
Mental Health	7.7%	6.4%
Mental Health / Vulnerable	7.7%	6.4%

*Population Overflow was not a classification used at MCDC 8/17/ 2005

The following tables look at how classification was used *within* each group.

At MCDC, there was significant movement from Disciplinary housing for both African Americans and Whites, with both groups showing a rise in the use of Mental Health housing. On the snapshot date in 2006, there were no American Indian / Alaskans in Mental Health housing.

	MCDC									
	African-American		American Indian or Alaskan		Asian		Hispanic		White	
Classification	2005	2006	2005	2006	2005	2006	2005	2006	2005	2006
Administrative Segregation	2.7%	3.8%	0.0%	11.1%	0.0%	0.0%	0.0%	0.0%	1.4%	4.9%
Discipline	18.2%	7.6%	0.0%	0.0%	0.0%	0.0%	20.0%	8.8%	15.4%	8.8%
General	70.9%	73.5%	87.5%	77.8%	83.3%	83.3%	63.3%	78.9%	68.6%	75.4%
Medical	0.7%	0.5%	0.0%	0.0%	16.7%	8.3%	0.0%	1.8%	2.1%	1.8%
Mental Health	0.7%	8.1%	12.5%	0.0%	0.0%	0.0%	3.3%	1.8%	2.5%	6.7%
Population Overflow		4.9%		11.1%		0.0%		8.8%		1.5%
Protective Custody / Mental Health	6.8%	1.6%	0.0%	0.0%	0.0%	8.3%	13.3%	0.0%	10.0%	0.9%
Total Number in Custody	148	185	8	9	6	12	30	57	280	329

At MCIJ, the opening of the three closed General Housing dorms can be seen in the increase of percentages across all racial categories for this housing type.

	MCIJ									
	African-American		American Indian or Alaskan		Asian		Hispanic		White	
Classification	2005	2006	2005	2006	2005	2006	2005	2006	2005	2006
Discipline	4.9%	3.9%	0.0%	5.6%	6.3%	6.7%	1.0%	2.5%	3.7%	2.4%
Discipline / Pop Overflow	3.1%	2.1%	7.1%	0.0%	0.0%	0.0%	2.0%	0.0%	2.7%	2.4%
General	80.3%	86.0%	71.4%	77.8%	75.0%	80.0%	83.8%	94.1%	74.5%	76.3%
Medical	0.9%	1.1%	0.0%	0.0%	0.0%	6.7%	3.0%	0.8%	1.0%	0.9%
Mental Health	2.7%	1.8%	7.1%	11.1%	12.5%	0.0%	3.0%	2.5%	10.8%	9.6%
Mental Health / Vulnerable	8.1%	5.3%	14.3%	5.6%	6.3%	6.7%	7.1%	0.0%	7.3%	8.4%
Total Number in Custody	223	285	14	18	16	15	99	118	490	574